



Build something great™

# Pollution Incident Response Management Plan

## TEVEN QUARRY

Version 12: 3<sup>rd</sup> February 2023



## DOCUMENT CONTROL SHEET

Ver.	Date	Prepared by	Approved By	Revision Details
01	20 Aug 2012	Rod Johnson	Rod Johnson	Document Created
02	05 Apr 2013	Nathan Jeffery	Rod Johnson	Format Changes Added additional maps Document control sheet added
03	11 Oct 2013	Nathan Jeffery	Rod Johnson	Staff Contact details updated Incident #3 response actions updated (identified from PIRMP drill) Changed site map to reduce file size
04	22 Sep 2014	Nathan Jeffery	Rod Johnson	Updated site contact details Updated risk assessment to 5x5 risk matrix
05	25 Sep 2015	Nathan Jeffery	Rod Johnson	Updated staff contact details Minor formatting changes Updated reference to HSEQ SOP
06	6 Oct 2016	Nathan Jeffery	Nathan Jeffery	Updated names and contact numbers
06.1	10 Nov 2017	Ronnie Lawton	Ronnie Lawton	Updated supervisor contact details
7	30 Oct 2018	Peter Scioscia	Peter Scioscia	Updated details
8	7 Nov 2019	Peter Scioscia	Peter Scioscia	Updated details
9	3 July 2020	Rod Johnson	Rod Johnson	Updated staff contact details Minor formatting changes Update Risk Assessments
10	July 2021	Rod Johnson	Rod Johnson	Updated staff contact details Minor formatting changes Update Risk Assessments
11	June 2022	Rod Johnson	Rod Johnson	Updated staff contact details Minor formatting changes
12	Feb 2023	Rod Johnson	Rod Johnson	Updated staff contact details Minor formatting changes Review Risk Assessments

Current Ver.	Date Implemented	PIRMP Test Schedule	Date for Next Review
12	February 2023	12 months	February 2024

## TABLE OF CONTENTS

1. PURPOSE .....	4
2. LEGISLATIVE REQUIREMENTS .....	4
3. DEFINITION OF ‘POLLUTION INCIDENT’ .....	5
4. SCOPE .....	5
5. POTENTIAL POLLUTING SUBSTANCES .....	6
6. ROLES AND RESPONSIBILITIES .....	9
7. INTERNAL POLLUTION INCIDENT REPORTING .....	10
8. EXTERNAL POLLUTION INCIDENT REPORTING.....	11
9. POLLUTION INCIDENT AUTHORITY CONTACT LIST .....	12
10. INCIDENT RESPONSE TRAINING .....	13
11. PIRMP AUDIT.....	13
12. PIRMP REVIEW .....	13
i. EVENT BASED.....	14
ii. TIME BASED.....	14
APPENDIX 1 – RISK ASSESSMENT on POTENTIAL IMPACTS .....	15
APPENDIX 2 – PIRMP RESPONSE ACTIONS.....	17
APPENDIX 3 – TEVEN QUARRY LOCATION MAP.....	22
APPENDIX 4 – TEVEN QUARRY REFERENCE MAP.....	23
APPENDIX 5 – TEVEN QUARRY – MAP OF AFFECTED AREAS .....	24
APPENDIX 6 – Pollution Incident Notification Log .....	25
APPENDIX 7. PIRMP- IMMEDIATE REPORTING CONTACT SHEET .....	27

## 1. PURPOSE

The purpose of the Teven Quarry Pollution Incident Response Plan is to:

- Provide direction to the staff at Teven Quarry in responding to pollution incidents at the Teven operations;
- Ensure timely communication about a pollution incident is provided to staff at the premises, the Environment Protection Authority (EPA), other relevant authorities specified in the Protection of the Environment Legislation Amendment Act (POELA Act) (including Ballina Shire Council, NSW Ministry of Health, Work Cover NSW, and Fire and Rescue NSW) and persons outside the operations who may be affected by the impacts of a pollution incident;
- Minimise and control the risk of a pollution incident at Teven Quarry by identifying key risks and planned actions to minimise and manage those risks;
- Detail the training requirements for this plan, identifying persons responsible for implementing it, and ensuring that the plan is regularly tested for accuracy, currency and suitability.

## 2. LEGISLATIVE REQUIREMENTS

The specific requirements for a PIRMP are set out in Part 5.7A of the POEO Act and the Protection of the Environment Operations (General) Regulation 2009 (POEO(G) Regulation). In summary, this provision requires the following:

- All holders of environment protection licences must prepare a pollution incident response management plan (section 153A, POEO Act).
- The plan must include the information detailed in the POEO Act (section 153C) and be in the form required by the POEO(G) Regulation (clause 98B).
- Licensees must keep the plan at the premises to which the environment protection licence relates (section 153D, POEO Act).
- Licensees must test the plan in accordance with the POEO(G) Regulation (clause 98E).

- if a pollution incident occurs in the course of an activity so that material harm to the environment is caused or threatened, licensees must immediately implement the plan (section 153F, POEO Act)

### 3. DEFINITION OF 'POLLUTION INCIDENT'

The definition of a pollution incident is:

*“pollution incident means an incident or set of circumstances during or as a consequence of which there is or is likely to be a leak, spill or other escape or deposit of a substance, as a result of which pollution has occurred, is occurring or is likely to occur. It includes an incident or set of circumstances in which a substance has been placed or disposed of on premises, but it does not include an incident or set of circumstances involving only the emission of any noise.”*

A pollution incident is required to be notified if there is a risk of 'material harm to the environment', which is defined in section 147 of the POEO Act as:

- a) harm to the environment is material if:
  - i. it involves actual or potential harm to the health or safety of human beings or to ecosystems that is not trivial, or
  - ii. it results in actual or potential loss or property damage of an amount, or amounts in aggregate, exceeding \$10,000 (or such other amount as is prescribed by the regulations), and
- b) loss includes the reasonable costs and expenses that would be incurred in taking all reasonable and practicable measures to prevent, mitigate or make good harm to the environment.

Teven Quarry is now required to report pollution incidents immediately to the EPA, NSW Health, Fire and Rescue NSW, WorkCover NSW and the local council.

### 4. SCOPE

This PIRMP must be followed by employees, contractors and visitors of Teven Quarry, to assist in the early response to and reporting of a pollution incident.

## 5. POTENTIAL POLLUTING SUBSTANCES

The main hazards to human health and the environment at Teven Quarry are included in the following table.

LIST OF POLLUTING SUBSTANCE STORAGES/USES AT SITE: INITIAL ASSESSMENT (all Chemicals listed in this sheet are to be subjected to a risk assessment)							
Site Name: Teven Quarry					Responsible Person: Quarry Manager		Date: 2/02/2023
Name / description	Covered under Haz Chemicals/MSDS?	Amount stored	Location of storage	Map reference	Need for early warning <sup>1</sup>	Current controls	See Risk Ass & PIRMP Response Action (see Below)
<b>CHEMICALS/FUELS/LUBRICANTS (raw materials and products which can cause pollution)</b>							
Uncontrolled loss of Diesel or other hydrocarbon based products that could result in material harm to the environment or human health	Class 3 & Class 2	Diesel Storage AG Diesel Storage tanks - 32 000 ltrs  Precoat Storage AG Precoat storage tank – 21 000ltrs  Packaged goods up to 12 000 ltrs  Waste Oil Tank (Above	Diesel Storage Area  Precoat Storage Area  Oil Storage Shed at Workshop  Maintenance Workshop	Ref No #1	N/A	<ul style="list-style-type: none"> <li>• Bunding</li> <li>• Self bunded Oil store</li> <li>• PMP</li> <li>• Training</li> <li>• Spill Kits</li> <li>• SOP</li> <li>• Inductions</li> <li>• Fire Fighting Equipment</li> <li>• Security</li> </ul>	Incident #1

<sup>1</sup> Early warnings relate to informing neighbours who may be affected by the emission of this substance. If this substance is of a type and quantity which may reach neighbours then early warning assessment of actions is required to be undertaken.  
Teven Quarry – PIRMP-V12

		Ground) 2000 ltrs					
<b>MATERIALS (eg stockpiles, silos, bulk solids etc)</b>							
Excessive airborne dust from stockpiled material, mobile plant or traffic areas causing material harm to the environment or significant impact to the community	N/A	Variable stockpiles across stockpile areas	Dedicated on site stockpile areas	Ref No #8 & #9	N/A	<ul style="list-style-type: none"> <li>• Water Cart</li> <li>• Sprays</li> <li>• Maintain manageable levels of stocks</li> <li>• Vegetative bunding around site</li> <li>• Wheel wash</li> <li>• Security</li> </ul>	Incident #5
<b>AQUEOUS (eg dams, wastewater tanks, other water storage area)</b>							
Uncontrolled release of sediment laden water from storage dams causing material harm to the environment	pH TSS NTS OC	Variable refer to Water Management Plan		Ref No #6	N/A	<ul style="list-style-type: none"> <li>• Continue to use for dust suppression</li> <li>• Ensure pumps are maintained through scheduled maintenance</li> <li>• Discharge monitoring</li> </ul>	Incident #6
<b>Blast Fume/Odour (e.g. fumes and odour associated with blasting)</b>							
Uncontrolled release of Blast fumes and/or odour (NOx) from	Odour NOx	NA	Blasting occurs within the		NA	<ul style="list-style-type: none"> <li>• Boral doesn't sleep shots as normal operations</li> </ul>	Incident #4

blast practices causing significant impact to the surrounding community			Production Pit			<ul style="list-style-type: none"> <li>• Wet holes are not slept</li> <li>• Holes loaded and fired on same day where possible</li> <li>• Pit is isolated from community</li> </ul>	
---	--	--	----------------	--	--	--	--

PUBLIC VERSION



## 6. ROLES AND RESPONSIBILITIES

Position	Responsibility
<i>Employees and Contractors</i>	<p>Following the procedures outlined in the PIRMP and related documents</p> <p>Immediately alerting Supervisor or Team Leader of any environmental incidents or near-misses.</p>
<i>Team Leaders / Front Line Supervisors</i>	<p>Following the procedures outlined in the PIRMP and related documents</p> <p>Immediately alerting Site/Quarry Manager or, in case of their unavailability, Environmental Representative or Environment Manager of any potentially material environmental incidents or near-misses.</p> <p>Conducting incident investigations.</p>
<i>Site / Operations Manager and/or Site Environmental Coordinator and/or Environment Manager</i>	<p>Authorisation of the PIRMP Administration, maintenance and implementation of the PIRMP</p> <p>Assessing whether the incident has caused or threatens “material environmental harm” and, if so, immediately notifying all Appropriate Regulatory Authorities.</p> <p>Ensuring that investigations are undertaken to a level corresponding to the level of risk and impact.</p>

## 7. INTERNAL POLLUTION INCIDENT REPORTING

Any pollution incident satisfying the **material harm** threshold must be immediately reported to relevant statutory authorities by either the Site/Operations Manager, or Environment Manager.

In cases where “material harm” level cannot be immediately assessed or insufficient information comes to hand on the severity of the incident, the general advice is to err on the side of caution and notify the Relevant Authorities with a qualification that the situation could not yet be fully assessed.

Until further notice the following procedure needs to be followed:

1. When a pollution incident occurs, a person who has become aware of it must immediately bring it to the attention of his/her immediate Supervisor or Manager
2. If necessary, first ring “ 000 ” for Emergency Services
- 3 At least one of the following BCM personnel must be contacted **immediately**:

Names and contact details withheld from public version for privacy reasons.

Name	Function	Phone number	Mobile number

4. The quarry manager or in case of his unavailability one of the Senior Management personnel listed above, is to **immediately** notify all Appropriate Regulatory Authorities specified in Section 4.3.
5. In borderline situations, where the exceedance of the trigger level of “material harm” of a pollution incident may not be clear, a quick assessment including consultation with Boral environmental personnel should be undertaken to help the decision whether to notify or not.

6. Boral's Senior Management must be informed promptly of the fact of immediate notification to the Authorities. This includes environmental personnel listed above, as well as: **names withheld from public version.**

## 8. EXTERNAL POLLUTION INCIDENT REPORTING

As the legislation requires that notification must be done immediately upon becoming aware of the pollution incident, it is unlikely that a detailed picture will be available for reporting. Notwithstanding, it seems that some of the Government Authorities prepared a detailed questionnaire which is being filled at the time of this initial notification. Under the stress of incident handling it could be easy to provide a hasty, inaccurate estimate of the situation when answering these questions.

Therefore, the notification should be restricted to the facts known and nothing should be assumed or guessed. The details will be provided to the asking Authority later when more information comes to hand.

The initial notification should include as much of the following information (if known) as possible:

- location and time of the pollution incident
- type of the incident (spill, fire, unlicensed harmful discharge, etc)
- assessed level of incident gravity: "it seems to be..." (e.g. "a relatively minor spill"; "major fire", "explosion limited to one building", etc.)
- whether the Emergency Services have been required to attend.

Unless known for a fact, the answers to other questions should be politely deferred until a better assessment of the situation can be made.

The Boral person who is responsible for notifying the Authorities (Site/Operations Manager or Environment Manager) about the incident must prepare a Notification Log (a suitable form is attached) with the details of time of notifications and the persons who took to the call. The Authorities are expected to log the calls but early indications are that this is not always the case.

Notification of all Appropriate Government Authorities (at least 5 entities) may take considerable time. Delays may be experienced connecting to the right person or no contact may be possible after hours. All such instances should be recorded in the Notification Log.

## 9. POLLUTION INCIDENT AUTHORITY CONTACT LIST

<b>Government Authority - compulsory notifications</b>	<b>Emergency notification phone number</b>
EPA – Environment Line	131 555
Fire and Rescue NSW (FRNSW)	1300 729 579
Ballina Shire Council	6686 4444
Public Health Unit (North Coast AHS) – Lismore NC PHU	HealthLink (24 hr)- 1800 063 635 Head Office- Lismore- 6620 7500
WorkCover Authority of NSW	131050 Company ABN if asked: 51 000 187 002
<b>Government Authority - ring if relevant</b>	<b>Emergency notification phone number</b>
Police & Ambulance	000
Roads and Maritime Services (road spills)	132 701
NSW Office of Water	8838 7885
Bush Fire Control Officer	1800 049 933
Poisons Information Centre	131 126
Essential Energy (power line emergencies)	13 23 91

Communication with the local community may also be undertaken depending on the circumstances of the pollution incident. Teven Quarry would consider the following options for providing Early Warning and ongoing information to the community on pollution incidents:

- Direct phone contact with any local residents directly impacted by the pollution incident

- Letter Box drops of incident information and site contacts to local residents impacted by the pollution incident
- The inclusion of incident details within the relevant Quarry Community Newsletter

The Stakeholder Relations Manager can assist in the process of communicating with the community, as per the Stakeholder Engagement Plan for the site.

## 10. INCIDENT RESPONSE TRAINING

Teven Quarry will implement the Pollution Incident Response Management Plan by training or providing information to relevant employees and contractors in relevant areas of the Plan.

Training or information will be provided on the following;

- The contents and intent of this PIRMP,
- The roles and responsibilities of site staff in relation to this PIRMP
- Spill response procedures;
- General environmental awareness; and / or
- Hazardous materials awareness.

## 11. PIRMP AUDIT

The objectives of an audit are to maintain compliance with this plan. Internal audits of this Plan will be undertaken every 3 years.

Routine testing of the plan will be conducted annually, and can be completed through the following methods:

- Simulated environmental emergency, or
- Desktop simulations.

## 12. PIRMP REVIEW

Revisions are to be coordinated by the Site Manager and Environmental Representative.

The objectives of a review are:

Teven Quarry – PIRMP-V12

- To maintain compliance with the statutory requirements, and
- To identify opportunities for improvement in the Plan, and reduce the risk to human health and the environment

#### *i. EVENT BASED*

Events which may trigger a review of this Plan or its associated documents include:

- Within 1 month of reporting to the nominated parties in accordance with the plan, after a pollution incident, or
- Modification/Improvement to the system

#### *ii. TIME BASED*

Teven Quarry will review this management plan routinely every 12 months. The Plan review will include:

- This Document, and
- Legislation, Approval and Licence changes.

## APPENDIX 1 – RISK ASSESSMENT on POTENTIAL IMPACTS

Hazard and Likelihood Risk Assessment and Corrective Control Measures								
Site: Teven Quarry			Responsible Person: Quarry Manager			Review Date: 2 <sup>nd</sup> February 2023		
Name / ref of pollutant/ chemicals	Description of Hazard / Incident leading to hazard	Consequence	Likely hood	Risk	Impact on neighbours <sup>2</sup>	Control Measures Corrective Action Coverage under other Plans	Responsible person	Action date
Diesel	<b>Incident #1</b> Uncontrolled loss of Diesel or other hydrocarbon based products that could result in material harm to the environment or human health	1	2	L	N	Consequence: (Incidental): Failure resulting in loss of all or substantial volume of tanks would be captured entirely by existing primary bund with no release to soil or water.  Likelihood: (Unlikely): Due to location within bunds, damage to tanks is unlikely to occur from external equipment. In addition tanks are maintained in good structural integrity with low risk of failure through corrosion.	As per PIRMP action plan	When required
Aggregate stockpiles	<b>Incident #2</b> Excessive airborne dust from stockpiled material, mobile plant or traffic areas causing material harm to the environment or significant	2	2	L	Y	Consequence: (Minor): Excessive dust from stockpile during high winds causing nuisance to surrounding area.  Likelihood :(Unlikely): Stockpiles are maintained to a manageable level on a monthly basis. Use of water sprinklers and water cart onsite during windy periods.	As per PIRMP action plan	When required

<sup>2</sup> If the incident may impact on neighbours then it will need to trigger the early warnings assessment and actions  
Teven Quarry – PIRMP-V12

	impact to the community							
<b>Sediment Dams</b>	<b>Incident #3</b> Uncontrolled release of sediment laden water from storage dams causing material harm to the environment	3	2	M	N	<p>Consequence: (moderate): Catastrophic failure of one or more sediment dams are likely to result in off-site impacts to water courses which would predominantly reduce water quality over a short period of time. As such, impact to the environment/human health is not considered to be significant.</p> <p>Likelihood: (unlikely): Dams are frequently monitored and inspected for levels and integrity. Risk Assessment = Moderate Vs Unlikely = M</p> <p><b>Note:</b> For PIRMP purposes overflow events during extreme wet weather will be reported under POEO Licence obligations and not Immediate Reporting.</p>	As per PIRMP action plan	When required
<b>Blast Fume</b>	<b>Incident #4</b> Uncontrolled release of Blast fumes and/or odour (NOx) from blast practices causing significant impact to the surrounding community	2	2	L	Y	<p>Consequence: (minor): Any exposure to blast fume would be short term and dependent on weather conditions. Quarry is situated in rural area separated by distance from closest neighbours</p> <p>Likelihood :( unlikely): Boral does not sleep shots for any extended period of time and due to nature of resource water is not typically experienced in blast holes. Quarry is isolated from surrounding residents via distance</p>	As per PIRMP action plan	When required



## APPENDIX 2 – PIRMP RESPONSE ACTIONS

### Incident No 1

<b>Incident #1</b>	<p><b>Uncontrolled loss of Diesel or other hydrocarbon based products that could result in material harm to the environment or human health</b></p> <p>Actions Required:</p> <ul style="list-style-type: none"> <li>• Contact all relevant people/department (refer to Immediate Reporting Contact Sheet)</li> <li>• Ensure bunds are capturing full volume of diesel</li> <li>• Ensure bund integrity is sound throughout the entire period of incident (i.e. periodic inspections)</li> <li>• Contact service provider (Caltex No. 1800033111 or Transpacific 02 96007185) to pump-out bund contents</li> <li>• Area to be restricted to Incident Response Personnel</li> <li>• Ensure spill kit available for any release from bund</li> <li>• If any release from bund onto unsealed soil/surface water - Environmental Consultants to be engaged to investigate &amp; remediate contamination.</li> <li>• Repair/replace tanks</li> <li>• Refuel tanks</li> </ul> <p>Inspect bund for ongoing serviceability</p>
<b>Alarm raising</b>	<p>Any personnel involved or witnessing incident to report to immediate supervisor and PIRMP actions to be implemented.</p>
<b>Emergency Controller</b>	<ul style="list-style-type: none"> <li>• Quarry Manager</li> <li>• Call service provider (Quarry Manager)</li> <li>• Spill Kit manager (Supervisor)</li> <li>• Periodic inspections and update reporting of site and bund (Quarry Manager)</li> </ul>
<b>Scale of incident</b>	<p>Incident would be restricted to Diesel/Precoat storage area with minimal external impact, however, potential for bund overflow or failure may result in soil and surface water contamination that will require specialist investigation/remediation.</p>
<b>Evacuate</b>	<p>Only if fire or explosion potential exists. Quarry Manager and any advice provided by Fire Dept. as part of attendance after immediate notification.</p>
<b>Communications</b>	<p><b>Internal:</b> Quarry Manager</p> <ul style="list-style-type: none"> <li>• Environmental Manager NSW / ACT and Local Environmental Business Partner</li> </ul> <p><b>External mandatory:</b> Immediate Reporting Contact Sheet to be used</p> <p><b>External non-mandatory:</b> N/A</p>
<b>Rescuer / respondent + safety checks</b>	<p>As per Site Emergency Plan or Fire Department as part of Immediate Reporting</p>
<b>Rescue + First Aid</b>	<p>As per Site Emergency Plan or Fire Department as part of Immediate Reporting</p>
<b>Clean up and Waste disposal</b>	<p>Service Provider to dispose of diesel and advise on required clean-up.</p>
<b>Reporting and re-preparedness</b>	<p>See: GRP-HSEQ-3-02 Incident Reporting Investigation and Action Management GRP-HSEQ-8-07 Spill Management</p>

## Incident No 2

<b>Incident #2</b>	<p><b>Excessive airborne dust from stockpiled material, mobile plant or traffic areas causing material harm to the environment or significant impact to the community</b></p> <p>Actions Required:</p> <ul style="list-style-type: none"> <li>• Employees, Contractor/Visitor to notify site representative of issue immediately. (induction)</li> <li>• Daily monitoring to be undertaken to assess weather and site conditions</li> <li>• Contact all relevant people/department (refer to Immediate Reporting Contact Sheet)</li> <li>• Dust suppression activity to commence immediately on stockpiles</li> </ul>
<b>Alarm raising</b>	Any personnel involved or witnessing incident to report to immediate supervisor and PIRMP actions to be implemented.
<b>Emergency Controller</b>	<ul style="list-style-type: none"> <li>• Quarry Manager</li> <li>• Call service provider (Quarry Manager)</li> <li>• Spill Kit manager (Supervisor)</li> <li>• Periodic inspections and update reporting of site and surrounding area (Quarry Manager)</li> </ul>
<b>Scale of incident</b>	Incident would be localised to the area surrounding stockpile area, with minimal external impact.
<b>Evacuate</b>	Only if fire or explosion potential exists. Quarry Manager and any advice provided by Fire Dept. as part of attendance after immediate notification.
<b>Communications</b>	<p><b>Internal:</b></p> <ul style="list-style-type: none"> <li>• Quarry Manager</li> <li>• Environmental Manager NSW / ACT and / or Environmental Business Partner</li> </ul> <p><b>External mandatory:</b></p> <ul style="list-style-type: none"> <li>• Immediate Reporting Contact Sheet to be used</li> </ul> <p><b>External non-mandatory:</b> N/A</p>
<b>Rescuer / respondent + safety checks</b>	As per Site Emergency Plan or Fire Department as part of Immediate Reporting
<b>Rescue + First Aid</b>	As per Site Emergency Plan or Fire Department as part of Immediate Reporting
<b>Clean up and Waste disposal</b>	Service Provider to dispose of diesel and advise on required clean-up.
<b>Reporting and re-preparedness</b>	See: GRP-HSEQ-3-02 Incident Reporting Investigation and Action Management GRP-HSEQ-8-06 Air Management

## Incident No 3

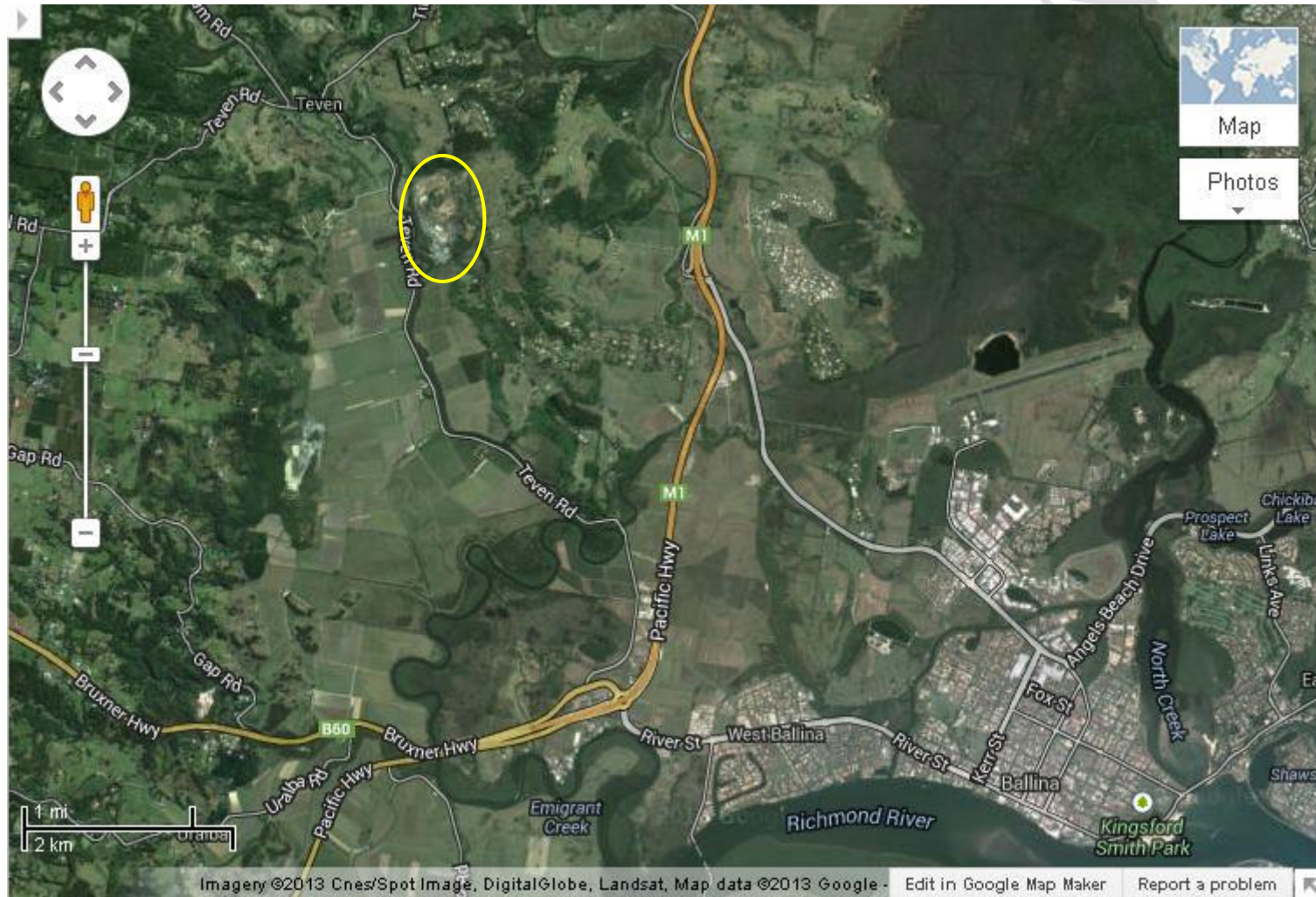
<b>Incident #3</b>	<p style="color: red;"><b>Uncontrolled release of sediment laden water from storage dams causing material harm to the environment</b></p> <p>Actions Required:</p> <ul style="list-style-type: none"> <li>• Contact all relevant people/department (refer to Immediate Reporting Contact Sheet)</li> <li>• Ensure bund integrity is sound throughout the entire period of incident (i.e. periodic inspections)</li> <li>• Contact local neighbours if going to be inundated by rise of water</li> <li>• Area to be restricted to Incident Response Personnel</li> <li>• If any release from site onto unsealed soil/surface water - Environmental Consultants to be engaged to investigate and remediate contamination if any</li> <li>• Contact local contractor to rebuild dams immediately</li> </ul>
<b>Alarm raising</b>	<p>Any personnel involved or witnessing incident to report to immediate supervisor and PIRMP actions to be implemented.</p>
<b>Emergency Controller</b>	<ul style="list-style-type: none"> <li>• Quarry Manager</li> <li>• Call service provider (Quarry Manager)</li> <li>• Spill Kit manager (Supervisor)</li> <li>• Periodic inspections and update reporting of site and bund (Quarry Manager)</li> </ul>
<b>Scale of incident</b>	<p>Catastrophic failure of one or more sediment dams are likely to result in off-site impacts to water courses which would predominantly reduce water quality over a short period of time. As such, impact to the environment/human health is not considered to be significant.</p>
<b>Evacuate</b>	<p>Only if flood potential exists. Quarry Manager and any advice provided by Fire Dept. as part of attendance after immediate notification.</p>
<b>Communications</b>	<p><b>Internal:</b></p> <ul style="list-style-type: none"> <li>• Quarry Manager</li> <li>• Environmental Manager NSW / ACT and Environmental Business Partner</li> </ul> <p><b>External mandatory:</b></p> <ul style="list-style-type: none"> <li>• Immediate Reporting Contact Sheet to be used</li> </ul> <p><b>External non-mandatory:</b> N/A</p>
<b>Rescuer / respondent + safety checks</b>	<p>As per Site Emergency Plan or Fire Department as part of Immediate Reporting</p>
<b>Rescue + First Aid</b>	<p>As per Site Emergency Plan or Fire Department as part of Immediate Reporting</p>
<b>Clean up and Waste disposal</b>	<p>Consultants to be contacted to advise on required clean-up.</p>
<b>Reporting and re-preparedness</b>	<p>See: GRP-HSEQ-3-02 Incident Reporting Investigation and Action Management GRP-HSEQ-8-02 Water Management</p>

## Incident No 4

<b>Incident #4</b>	<p style="color: red;"><b>Uncontrolled release of Blast fumes and/or odour (NOx) from blast practices causing significant impact to the surrounding community</b></p> <p>Actions Required:</p> <ul style="list-style-type: none"> <li>• Contact all relevant people/department (refer to Immediate Reporting Contact Sheet)</li> <li>• Area to be restricted to Incident Response Personnel</li> <li>• If prevailing winds pushing blast fume towards neighbours contact them immediately</li> <li>• Ensure blast service provider is aware of situation and advises accordingly</li> </ul>
<b>Alarm raising</b>	Any personnel involved or witnessing incident to report to immediate supervisor and PIRMP actions to be implemented.
<b>Emergency Controller</b>	<ul style="list-style-type: none"> <li>• Quarry Manager</li> <li>• Call service provider (Quarry Manager)</li> <li>• Periodic inspections and update reporting of site and surrounding area (Quarry Manager)</li> </ul>
<b>Scale of incident</b>	Incident would be localised to the area with external impact due to prevailing weather conditions
<b>Evacuate</b>	Only if fire or explosion potential exists or staff exposed to fume and health is of concern. Stay indoors. Quarry Manager and any advice provided by Fire Dept. as part of attendance after immediate notification.
<b>Communications</b>	<p><b>Internal:</b></p> <ul style="list-style-type: none"> <li>• Quarry Manager</li> <li>• Environmental Manager NSW / ACT and / or Environmental Business Partner</li> </ul> <p><b>External mandatory:</b></p> <ul style="list-style-type: none"> <li>• Immediate Reporting Contact Sheet to be used</li> </ul> <p><b>External non-mandatory:</b> N/A</p>
<b>Rescuer / respondent + safety checks</b>	As per Site Emergency Plan or Fire Department as part of Immediate Reporting
<b>Rescue + First Aid</b>	As per Site Emergency Plan or Fire Department as part of Immediate Reporting
<b>Clean up and Waste disposal</b>	Service provider to advise on any clean-up or disposal aspects
<b>Reporting and re-preparedness</b>	See: GRP-HSEQ-3-02 Incident Reporting Investigation and Action Management

PUBLIC VERSION

# APPENDIX 3 – TEVEN QUARRY LOCATION MAP





# APPENDIX 4 – TEVEN QUARRY REFERENCE MAP



# APPENDIX 5 – TEVEN QUARRY – MAP OF AFFECTED AREAS



Teven Quarry – PIRMP-V12



## APPENDIX 6 – Pollution Incident Notification Log

Person undertaking notification (Name/Function):		
Date and time when first become aware of the incident:		
Incident type:		
Comments:		

Initial immediate notification log				
Appropriate Regulatory Authority	Time of call	Respondent's name/function	Approximate call duration	Comments
EPA				
Public Health Unit				
Fire and Rescue NSW				
Local Council				
WorkCover				
Other:				
Other:				
Summary of initial communication:				

Person undertaking notification (Name/Function):		
Date and time when additional information become available:		
Comments:		

Immediate notification of further pertinent information (if applicable)				
Appropriate Regulatory Authority	Time of call	Respondent's name/function	Approximate call duration	Comments
EPA				
Public Health Unit				
Fire and Rescue NSW				
Local Council				
WorkCover				
Other:				
Other:				
Summary of additional communication				

## APPENDIX 7. PIRMP- IMMEDIATE REPORTING CONTACT SHEET

### TEVEN QUARRY

#### PIRMP- Immediate Reporting Contact Sheet

Internal Reporting:			
Name	Function	Phone number	Mobile number

External Reporting:	
Emergency Services / Government Authority	Emergency notification phone number
EPA – Environment Line	131 555
Fire and Rescue NSW (FRNSW)	1300 729 579
Ballina Shire Council	6686 4444
Public Health Unit (North Coast AHS) – Lismore NC PHU	HealthLink (24 hr)- 1800 063 635 Head Office- Lismore- 6620 7500
WorkCover Authority of NSW	131050 Company ABN if asked: 51 000 187 002
If an emergency also call;	
NSW Police & Ambulance	000
Essential Energy (power line emergencies)	13 23 91

*Refer to the Teven Quarry PIRMP for other potentially relevant contact numbers.*