



Build something great™



# Pollution Incident Response Management Plan

## TALBRAGAR QUARRY

Version Thirteen: 31 August 2023



## DOCUMENT CONTROL SHEET

*Table 1 Document control register*

Rev.	Date	Prepared by	Approved By	Revision Details
01	20 Aug 2012	Rod Johnson	Rod Johnson	Document Created
02	22 Apr 2013	Nathan Jeffery	Rod Johnson	Document control sheet added Format Changes Added additional maps
03	23 Sep 2014	Rod Johnson	Rod Johnson	Update site contact details
04	24 Dec 2014	Rod Johnson	Rod Johnson	Update details on onsite explosives Update details regarding flood events
05	15 Sep 2015	Danielle Griffiths	Danielle Griffiths	Update contact details Update matrix to 5 x 5
06	12 Sep 2016	Danielle Griffiths	Danielle Griffiths	Update contact details Update document references
07	1 Aug 2017	Danielle Griffiths	Danielle Griffiths	Risk assessment reviewed
08	1 Aug 2018	Peter Scioscia	Peter Scioscia	Update contact details
09	19 Jul 2019	Peter Scioscia	Peter Scioscia	Update version
10	22 June 2020	Peter Scioscia	Peter Scioscia	Update version
11	28 June 2021	Shoanne Labowitch	Shoanne Labowitch	Update site contacts Format changes Inclusion of non-trivial definition
12	26 Aug 2022	Sharon Makin	Sharon Makin	Update site contacts
13	31 Aug 2023	Chris Brown	Chris Brown	Update site contacts Format changes

Current Rev.	Date Implemented	PIRMP Test Schedule	Date for Next Review
13	31 August 2023	12 months	August 2024

## TABLE OF CONTENTS

PART A: COMPLIANCE REQUIREMENTS, POLLUTION INVENTORIES AND RISK ASSESSMENTS .....	4
1. PURPOSE .....	5
2. LEGISLATIVE REQUIREMENTS .....	5
3. DEFINITION OF 'POLLUTION INCIDENT' .....	8
4. SCOPE .....	9
5. SITE LAYOUT .....	10
6. POTENTIAL POLLUTING SUBSTANCES .....	13
7. ROLES AND RESPONSIBILITIES .....	17
8. INTERNAL POLLUTION INCIDENT REPORTING .....	18
9. EXTERNAL POLLUTION INCIDENT REPORTING .....	19
10. POLLUTION INCIDENT AUTHORITY CONTACT LIST .....	20
11. INCIDENT RESPONSE TRAINING .....	21
12. PIRMP TESTING .....	22
13. PIRMP REVIEW .....	22
PART B: INCIDENT RESPONSE ACTIONS AND NOTIFICATION LOGS .....	27
14. PIRMP RESPONSE ACTIONS .....	28
15. POLLUTION INCIDENT NOTIFICATION LOG .....	38
16. IMMEDIATE NOTIFICATION SHEET SUMMARY .....	40

### Table of Figures

Figure 1 - Talbragar Quarry Location Map .....	10
Figure 2 - Talbragar Quarry Reference Map .....	11
Figure 3 - Talbragar Quarry – Map of Affected Areas .....	12

### Table of Tables

Table 1 Document control register .....	2
Table 2: Summary of Legislative Requirements of a PIRMP .....	6
Table 3 – Potential Pollutants .....	14
Table 4 – Roles and Responsibilities .....	17
Table 5 – Internal Contacts List .....	18
Table 6 - External Authorities Contact List .....	20
Table 7 - PIRMP Drills Undertaken at Talbragar Quarry .....	22
Table 8 - Internal Reporting List .....	40
Table 9 - External Reporting List .....	40

**PART A: COMPLIANCE REQUIREMENTS, POLLUTION  
INVENTORIES AND RISK ASSESSMENTS**

PUBLIC

## 1. PURPOSE

The purpose of the Talbragar Quarry Pollution Incident Response Plan is to:

- Provide direction to the staff at Talbragar Quarry in responding to pollution incidents at the Talbragar operations;
- Ensure timely communication about a pollution incident is provided to staff at the premises, the Environment Protection Authority (EPA), other relevant authorities specified in the Protection of the Environment Legislation Amendment Act (POELA Act) (including Dubbo City Council, NSW Ministry of Health, Work Cover NSW, and Fire and Rescue NSW) and persons outside the operations who may be affected by the impacts of a pollution incident;
- Minimise and control the risk of a pollution incident at Talbragar Quarry by identifying key risks and planned actions to minimise and manage those risks.
- Detail the training requirements for this plan, identifying persons responsible for implementing it, and ensuring that the plan is regularly tested for accuracy, currency, and suitability.
- A hard copy of the PIRMP is to be kept on the site environmental board in the Talbragar Quarry Main Office. A soft copy of the PIRMP and EPL 899 is made available online <https://www.boral.com.au/our-commitment/environmental-reporting>

## 2. LEGISLATIVE REQUIREMENTS

The specific requirements for a Pollution Incident Response Management Plan (PIRMP) are set out in Part 5.7A of the POEO Act and the *Protection of the Environment Operations (General) Regulation 2009 (POEO (G) Regulation)*. Part 3A of the POEO Act and the *Protection of the Environment Operations (General) Regulation 2009 (POEO (G) Regulation)* describes specific components and requirements of a PIRMP.

Table 2 summarises the location of these requirements within the document.

Table 2: Summary of Legislative Requirements of a PIRMP

Section/Clause	Requirement	Location in PIRMP
<b>Part 5.7A POEO Act 1997</b>		
147	<p>(1) For the purposes of this Part—</p> <p style="padding-left: 40px;">(a) harm to the environment is material if—</p> <p style="padding-left: 80px;">(i) it involves actual or potential harm to the health or safety of human beings or to ecosystems that is not trivial, or</p> <p style="padding-left: 80px;">(ii) it results in actual or potential loss or property damage of an amount, or amounts in aggregate, exceeding \$10,000 (or such other amount as is prescribed by the regulations), and</p> <p style="padding-left: 40px;">(b) loss includes the reasonable costs and expenses that would be incurred in taking all reasonable and practicable measures to prevent, mitigate or make good harm to the environment.</p> <p>(2) For the purposes of this Part, it does not matter that harm to the environment is caused only in the premises where the pollution incident occurs.</p>	Section 3
153A	The holder of an environment protection licence must prepare a pollution incident response management plan that complies with this Part in relation to the activity to which the licence relates.	EPL 899 and this document
153C	<p>A pollution incident response management plan must be in the form required by the regulations and must include the following—</p> <p style="padding-left: 40px;">(a) the procedures to be followed by the holder of the relevant environment protection licence, or the occupier of the relevant premises, in notifying a pollution incident to—</p> <p style="padding-left: 80px;">(i) the owners or occupiers of premises in the vicinity of the premises to which the environment protection licence or the direction under section 153B relates, and</p> <p style="padding-left: 80px;">(ii) the local authority for the area in which the premises to which the environment protection licence or the direction under section 153B relates are located and any area affected, or potentially affected, by the pollution, and</p> <p style="padding-left: 80px;">(iii) any persons or authorities required to be notified by Part 5.7,</p> <p style="padding-left: 40px;">(b) a detailed description of the action to be taken, immediately after a pollution incident, by the holder of the relevant environment protection licence, or the occupier of the relevant premises, to reduce or control any pollution,</p> <p style="padding-left: 40px;">(c) the procedures to be followed for coordinating, with the authorities or persons that have been notified, any action taken in combating the pollution caused by the incident and, in particular, the persons through whom all communications are to be made,</p> <p style="padding-left: 40px;">(d) any other matter required by the regulations.</p>	<p>Section 8 and 9</p> <p>Section 6</p> <p>Section 7, 8, 9, 10 and 14</p> <p>Section 7, 8, 9, 10 and 14</p> <p>Section 15</p> <p>Section 7, 8, 9, 10 and 13</p> <p>Section 9, 14</p>
153D	A person who is required to prepare a pollution incident response management plan under this Part must ensure that it is kept at the premises to which the relevant environment protection licence relates, or where the relevant activity	Section 1

	takes place, and is made available in accordance with the regulations.	
153E	A person who is required to prepare a pollution incident response management plan under this Part must ensure that it is tested in accordance with the regulations	Section 11,12
153F	If a pollution incident occurs in the course of an activity so that material harm to the environment (within the meaning of section 147) is caused or threatened, the person carrying on the activity must immediately implement any pollution incident response management plan in relation to the activity required by this Part	Section 4, Section 14
<b>Part 3A POEO(G) Regulation 2009 Pollution Incident Response Management Plans</b> <b>note: See also 153C (a)-(c) of the POEO Act 1997</b>		
98C(1) (a)	A description of the hazards to human health or the environment associated with the activity to which the licence relates,	Section 6, Appendix 1
98C(1) (b)	The likelihood of any such hazards occurring, including details of any conditions or events that could, or would, increase that likelihood,	Appendix 1
98C(1) (c)	Details of the pre-emptive action to be taken to minimise or prevent any risk of harm to human health or the environment arising out of the relevant activity	Section 9, Appendix 1, Section 14
98C(1) (d)	An inventory of potential pollutants on the premises or used in carrying out the relevant activity	Section 6
98C(1) (f)	A description of the safety equipment or other devices that are used to minimise the risks to human health or the environment and to contain or control a pollution incident,	Section 6, Appendix 1
98C(1) (g)	the names, positions and 24-hour contact details of those key individuals who: <ul style="list-style-type: none"> <li>I. are responsible for activating the plan, and</li> <li>II. are authorised to notify relevant authorities under section 148 of the Act, and</li> <li>III. are responsible for managing the response to a pollution incident,</li> </ul>	Section 8 16
98C(1) (h)	the contact details of each relevant authority referred to in section 148 of the Act,	Section 9, 16
98C(1) (i)	Details of the mechanisms for providing early warnings and regular updates to the owners and occupiers of premises in the vicinity of the premises to which the licence relates or where the scheduled activity is carried on	Section 10
98C(1) (j)	The arrangements for minimising the risk of harm to any persons who are on the premises or who are present where the scheduled activity is being carried on	Section 9, Appendix 1
98C(1) (k)	A detailed map (or set of maps) showing the location of the premises to which the licence relates, the surrounding area that is likely to be affected by a pollution incident, the location of potential pollutants on the premises and the location of any stormwater drains on the premises	Section 5
98C(1) (l)	A detailed description of how any identified risk of harm to human health will be reduced, including (as a minimum) by means of early warnings, updates and the action to be taken during or immediately after a pollution incident to reduce that risk,	Section 9, Appendix 1

98C(1) (m)	The nature and objectives of any staff training program in relation to the plan	Section 11
98C(1) (n)	The dates on which the plan has been tested and the name of the person who carried out the test,	Table 7
98C(1) (o)	The dates on which the plan is updated,	Document Control Sheet
98C(1) (p)	The manner in which the plan is to be tested and maintained.	Section 11, 12, 13

### 3. DEFINITION OF ‘POLLUTION INCIDENT’

The definition of a pollution incident is:

*“pollution incident means an incident or set of circumstances during or as a consequence of which there is or is likely to be a leak, spill or other escape or deposit of a substance, as a result of which pollution has occurred, is occurring or is likely to occur. It includes an incident or set of circumstances in which a substance has been placed or disposed of on premises, but it does not include an incident or set of circumstances involving only the emission of any noise.”*

A pollution incident is required to be notified if there is a risk of ‘material harm to the environment’, which is defined in section 147 of the POEO Act as:

a) harm to the environment is material if:

- i. it involves actual or potential harm to the health or safety of human beings or to ecosystems that is not trivial, or
- ii. it results in actual or potential loss or property damage of an amount, or amounts in aggregate, exceeding \$10,000 (or such other amount as is prescribed by the regulations), and

b) loss includes the reasonable costs and expenses that would be incurred in taking all reasonable and practicable measures to prevent, mitigate or make good harm to the environment.

Talbragar Quarry is now required to report **non-trivial** pollution incidents immediately to the EPA, NSW Health, Fire and Rescue NSW, SafeWork NSW and the local council.



## 4. SCOPE

This PIRMP must be followed by employees, contractors, and visitors of Talbragar Quarry, to assist in the early response to and reporting of a pollution incident.

PUBLIC

## 5. SITE LAYOUT

Figure 1 - Talbragar Quarry Location Map



Figure 2 - Talbragar Quarry Reference Map

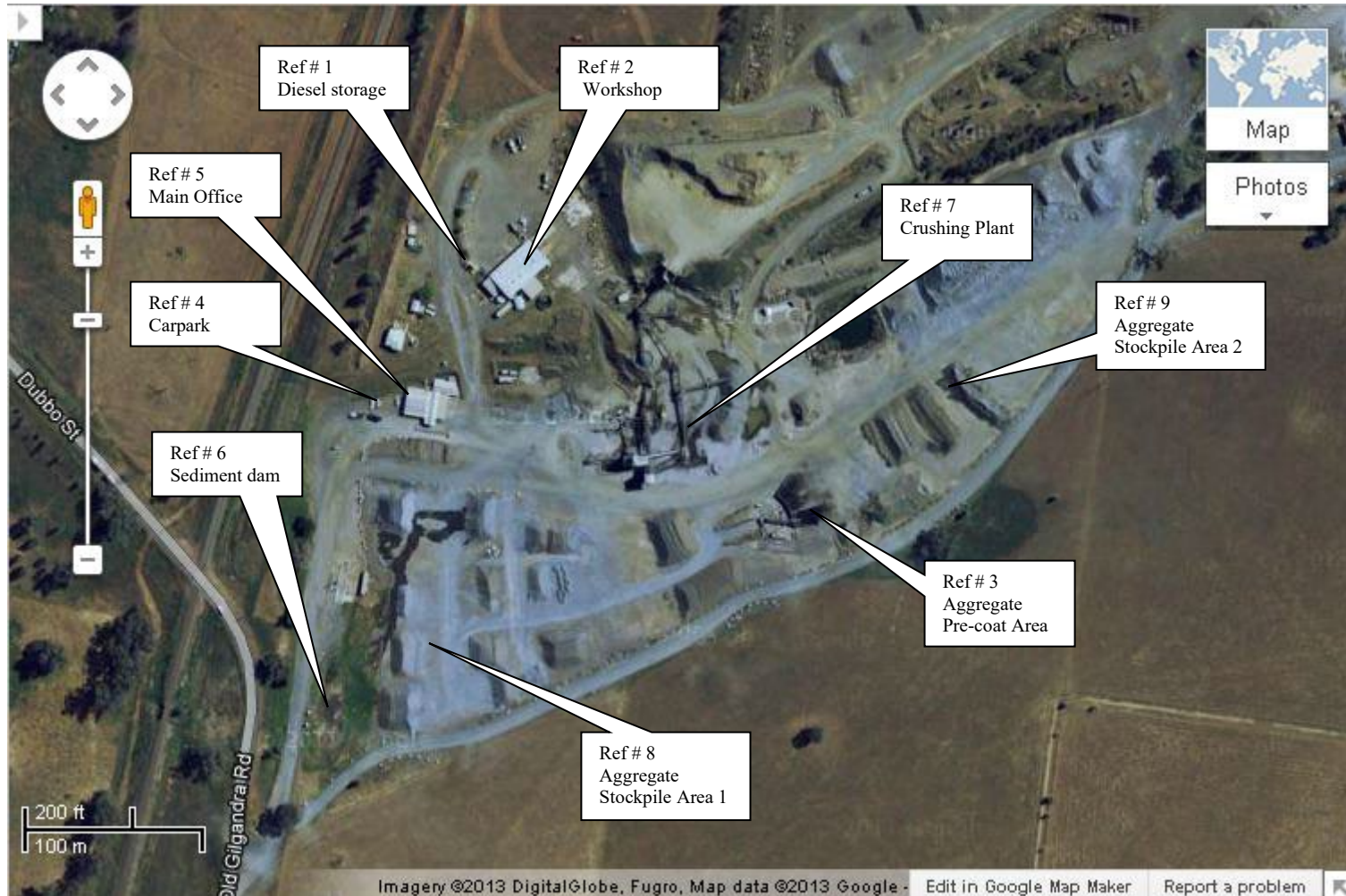


Figure 3 - Talbragar Quarry – Map of Affected Areas



## 6. POTENTIAL POLLUTING SUBSTANCES

Table 3 below is an inventory of potential pollutants kept on the premises. This inventory provides a description of the main hazards to human health or the environment, an assessment of the likelihood of the hazards occurring and also includes the current controls and safety equipment and/ or pre-emptive actions in place to minimise or prevent risk of harm to human health or the environment.

PUBLIC

Table 3 – Potential Pollutants

LIST OF POLLUTING SUBSTANCE STORAGES/USES AT SITE: INITIAL ASSESSMENT (all Chemicals listed in this sheet are to be subjected to a risk assessment)							
Site Name: Talbragar Quarry					Responsible Person: Quarry Manager		Date: 31/8/2023
Name / description	Covered under Haz Chemicals/MSDS	Amount stored	Location of storage	Map reference	Need for early warning <sup>1</sup>	Current controls	See Risk Ass & PIRMP Response Action (see Below)
<b>CHEMICALS/FUELS/LUBRICANTS (raw materials and products which can cause pollution)</b>							
Diesel	Class 3	10000 ltrs	Diesel Storage Area	Ref No #1	N/A	<ul style="list-style-type: none"> <li>• Bunding</li> <li>• PMP</li> <li>• Training</li> <li>• Spill Kits</li> <li>• SOP</li> <li>• Inductions</li> <li>• Fire Fighting Equipment</li> <li>• Security</li> </ul>	Incident #1-3
Precoat	Class 3	21000 ltrs	Precoat Storage Area	Ref No #3	N/A	<ul style="list-style-type: none"> <li>• Bunding</li> <li>• PMP</li> <li>• Training</li> <li>• Spill Kits</li> <li>• SOP</li> <li>• Inductions</li> <li>• Fire Fighting Equipment</li> <li>• Security</li> </ul>	Incident #1-3
Oils/Solvents	Class 3	Packaged goods up to 4000 ltrs Waste Oil Tank (In-	Oil Storage Shed at Workshop	Ref No #2	N/A	<ul style="list-style-type: none"> <li>• Bunding</li> <li>• PMP</li> <li>• Training</li> <li>• Flammable</li> </ul>	Incident #4

<sup>1</sup> Early warnings relate to informing neighbours who may be affected by the emission of this substance. If this substance is of a type and quantity which may reach neighbours, then early warning assessment of actions is required to be undertaken.

		Ground) 2000 ltrs				<ul style="list-style-type: none"> <li>• Cabinet</li> <li>• Spill Kits</li> <li>• Inductions</li> <li>• Fire Fighting Equipment</li> <li>• Security</li> </ul>	
Lubricants, Gases	Class 2	Variable	Maintenance Workshop	Ref No #2	N/A	<ul style="list-style-type: none"> <li>• Fire Extinguishers</li> <li>• Concrete Floor</li> <li>• Enclosed Shed</li> <li>• Containment Cages and Cabinets</li> </ul>	Incident #4
Oils/Fuel	Class 3	Variable	Plant and Equipment (Workshop area)	Ref No #2	N/A	<ul style="list-style-type: none"> <li>• PMP</li> <li>• Training</li> <li>• Spill Kits</li> <li>• SOP</li> <li>• Inductions</li> <li>• Fire Fighting Equipment</li> <li>• Security</li> </ul>	Incident #4
<b>MATERIALS (e.g. stockpiles, silos, bulk solids etc.)</b>							
Aggregate Stockpiles	N/A	Variable	Dedicated on site	Ref No #8 & #9	N/A	<ul style="list-style-type: none"> <li>• Water sprays</li> <li>• Water Cart</li> <li>• Maintain manageable levels</li> <li>• Security</li> </ul>	Incident #5
<b>AQUEOUS (eg dams, wastewater tanks, other water storage area)</b>							
Water Storage Dam (Sediment)	N/A	Variable		Ref No #6	N/A	<ul style="list-style-type: none"> <li>• Continue to use for dust suppression</li> <li>• Ensure pumps are maintained through scheduled</li> </ul>	Incident #6

						<ul style="list-style-type: none"> <li>• Discharge monitoring</li> </ul>	
Storm Water Drains	N/A	Variable	Site	N/A	N/A	<ul style="list-style-type: none"> <li>• Straw Bales</li> <li>• Rubber and Earthen Berms</li> <li>• Audits and Inspections</li> </ul>	Incident #6
<b>SUBSTANCES IN PROCESSES (substances which could be emitted from operational process i.e. treatment plants, vehicles etc)</b>							
Name / description	Covered under Haz Chemicals/MSDS?	Amount stored	Location of storage	Map reference	Need for early warning <sup>2</sup>	Current controls	See Risk Ass & PIRMP Response Action (see Below)
Mobile Plant (onsite) BORAL	Class 3	Up to 10 MP on site	Dedicated on site	N/A	N/A	<ul style="list-style-type: none"> <li>• Spill Kits</li> <li>• Prestart checks</li> <li>• PMP</li> <li>• Training</li> </ul>	Incident #7
Mobile Plant Contractor/visitor	Class 3	Variable	Variable Locations	N/A	N/A	<ul style="list-style-type: none"> <li>• Spill Kits</li> <li>• Training</li> <li>• Inductions</li> </ul>	Incident #8
Car Parking up to 20 vehicles	Class 3	Variable	Site Office	Ref No #4	N/A	<ul style="list-style-type: none"> <li>• Spill Kits</li> <li>• Training</li> </ul>	Incident #9
Traffic Areas (dust, chem. leaks & loss)	Class 3	N/A	Dedicated on site	N/A	N/A	<ul style="list-style-type: none"> <li>• Training</li> <li>• Water cart</li> <li>• Spill Kits</li> </ul>	Incident #10

\* NB: Explosives are not stored onsite. As such explosives are not included in the List of Polluting Substances

<sup>2</sup> Early warnings relate to informing neighbours who may be affected by the emission of this substance. If this substance is of a type and quantity which may reach neighbours, then early warning assessment of actions is required to be undertaken.



## 7. ROLES AND RESPONSIBILITIES

Table 4 – Roles and Responsibilities

Position	Responsibility
<i>Employees and Contractors</i>	<p>Following the procedures outlined in the PIRMP and related documents</p> <p>Immediately alerting Supervisor or Team Leader of any environmental incidents or near-misses.</p>
<i>Team Leaders / Front Line Supervisors</i>	<p>Following the procedures outlined in the PIRMP and related documents</p> <p>Immediately alerting Site/Quarry Manager or, in case of their unavailability, Environmental Representative or Environment Manager of any potentially material environmental incidents or near-misses.</p> <p>Conducting incident investigations.</p>
<i>Site / Operations Manager and/or Site Environmental Coordinator and/or Environment Manager</i>	<p>Authorisation of the PIRMP</p> <p>Administration, maintenance, and implementation of the PIRMP</p> <p>Assessing whether the incident is <b>non-trivial</b> and has caused or threatens “material environmental harm” and, if so, immediately notifying all Appropriate Regulatory Authorities. Ensuring that investigations are undertaken to a level corresponding to the level of risk and impact.</p>
<i>HSE Regional Manager and/or Regional Environment Manager</i>	<p>Make a determination as to whether the incident (as defined in section 147 of the POEO Act) is <b>non-trivial</b> and has caused or threatens “material environmental harm” and is therefore reportable to external agencies</p> <p>Inform Executive General manager and Group management of Notification to External Agencies</p> <p>Undertake notifications as defined in PIRMP</p> <p>Authorise notifications to public and/or media following GRP-HSEQ-2-02</p>

## 8. INTERNAL POLLUTION INCIDENT REPORTING

Any pollution incident satisfying the **material harm** threshold must be immediately reported to relevant statutory authorities by either the Site/Operations Manager, or Environment Manager.

In cases where “material harm” level cannot be immediately assessed or insufficient information comes to hand on the severity of the incident, the general advice is to err on the side of caution and notify the Relevant Authorities with a qualification that the situation could not yet be fully assessed.

Until further notice the following procedure needs to be followed:

1. When a pollution incident occurs, a person who has become aware of it must immediately bring it to the attention of his/her immediate Supervisor or Manager
2. If necessary, first ring “000” for Emergency Services
3. At least one of the following BCM personnel must be contacted **immediately**:

Whilst personal contact details for the following are available in the Controlled on site Pollution Incident Response Management Plan they do not appear in this public document.

*Table 5 – Internal Contacts List*

Name	Function	Phone number	Mobile number
	Quarry Operations Manager - West		
	Quarry Supervisor		
	HS Advisor – NSW/ACT		
	Senior Environment Business Partner – NSW/ACT		

4. The Quarry Manager or in case of his unavailability one of the Senior Management personnel listed above, is to **immediately** notify all Appropriate Regulatory Authorities specified in Section 4.3.
5. In borderline situations, where the exceedance of the trigger level of “material harm” of a pollution incident may not be clear, a quick assessment including consultation with

Boral environmental personnel should be undertaken to help the decision whether to notify or not.

6. Boral's Senior Management must be informed promptly of the fact of immediate notification to the Authorities. This includes environmental personnel listed above, as well as [REDACTED]

## 9. EXTERNAL POLLUTION INCIDENT REPORTING

As the legislation requires that notification must be done immediately upon becoming aware of the pollution incident, it is unlikely that a detailed picture will be available for reporting. Notwithstanding, it seems that some of the Government Authorities prepared a detailed questionnaire which is being filled at the time of this initial notification. Under the stress of incident handling it could be easy to provide a hasty, inaccurate estimate of the situation when answering these questions.

Therefore, the notification should be restricted to the facts known and nothing should be assumed or guessed. The details will be provided to the asking Authority later when more information comes to hand.

The initial notification should include as much of the following information (if known) as possible:

- location and time of the pollution incident
- type of the incident (spill, fire, unlicensed harmful discharge, etc)
- assessed level of incident gravity: "it seems to be..." (e.g. "a relatively minor spill"; "major fire", "explosion limited to one building", etc.)
- whether the Emergency Services have been required to attend.

Unless known for a fact, the answers to other questions should be politely deferred until a better assessment of the situation can be made.

The Boral person who is responsible for notifying the Authorities (NSW HSE Regional Manager or Senior Environment Business Partner) about the incident must prepare a Notification Log (a suitable form is attached) with the details of time of notifications and the persons who took to the call. The Authorities will generally provide an Incident Notification Number.

Notification of all Appropriate Government Authorities (at least 5 entities) may take considerable time. Delays may be experienced connecting to the right person or no contact may be possible after hours. All such instances should be recorded in the Notification Log.

## 10. POLLUTION INCIDENT AUTHORITY CONTACT LIST

*Table 6 - External Authorities Contact List*

<b>Government Authority - compulsory notifications</b>	<b>Emergency notification phone number</b>
EPA – Environment Line	131 555
NSW Police & Ambulance	000
Fire & Rescue NSW (FRNSW)	1300 729 579
Dubbo City Council	6801 4000
Public Health Unit (Dubbo)	Ph: 02 6885 8666 (Dubbo Base Hospital) - ask for Public Health Officer on call, if no answer: Mob: 0418 866 397 - ask for Public Health Officer on call
SafeWork NSW	131050 Company ABN if asked: 51 000 187 002
<b>Government Authority - ring if relevant</b>	<b>Emergency notification phone number</b>
Roads and Maritime Services (road spills)	132 701
NSW Office of Water	8838 7885
Bush Fire Control Officer	1800 049 933
Poisons Information Centre	131 126
Essential Energy (power line emergencies)	13 20 80

Communication with the local community may also be undertaken depending on the circumstances of the pollution incident. Talbragar Quarry would consider the following options for providing Early Warning and ongoing information to the community on pollution incidents:

- Direct phone contact with any local residents directly impacted by the pollution incident
- Letter Box drops of incident information and site contacts to local residents impacted by the pollution incident
- The inclusion of incident details within the relevant Quarry Community Newsletter

The Stakeholder Relations Manager can assist in the process of communicating with the community, as per the Stakeholder Engagement Plan for the site.

## **11. INCIDENT RESPONSE TRAINING**

Talbragar Quarry will implement the Pollution Incident Response Management Plan by training or providing information to relevant employees and contractors in relevant areas of the Plan. The nature and objectives of staff training is to relate to site personnel the importance of early notification of any incidents and spills to site supervisors and key personnel.

Training or information will be provided on the following.

- The contents and intent of this PIRMP,
- The roles and responsibilities of site staff in relation to this PIRMP
- Spill response procedures.
- General environmental awareness; and / or
- Hazardous materials awareness.

Site inductions for visitors and sub-contractors also advise individuals to report any environmental incidents or spills to site supervisors and key personnel immediately. Key site personnel and supervisors participate in PIRMP Tests which are used as practical training and can also be used to identify any potential gaps or areas for improvement for the PIRMP. A summary of the PIRMP Drills undertaken at Talbragar Quarry is shown below in Table 7.

*Table 7 - PIRMP Drills Undertaken at Talbragar Quarry*

Test Date	Version tested	Incident Drilled	Drill Team Lead
10/06/2021	10	Desktop review of document	Shoanne Labowitch
26/8/2022	11	Desktop review	Sharon Makin
31/8/2023	12	Incident #4	Chris Brown

A sign-off sheet is kept of the personnel present for the undertaking of a PIRMP Drill and a record is kept on when and how the PIRMP is communicated to employees. This information forms a section of the PIRMP Drill document. For more information regarding each of the PIRMP Drills, refer to the specific drill document.

## **12. PIRMP TESTING**

Plans must be tested routinely at least once every 12 months. The testing is to be carried out in such a manner as to ensure that the information included in the plan is accurate and up to date, and that each plan is capable of being implemented in a workable and effective manner.

The objectives of an audit are to maintain compliance with this plan. Internal audits of this Plan will be undertaken every 3 years.

Routine testing of the plan will be conducted annually, and can be completed through the following methods:

- Simulated environmental emergency, or
- Desktop simulations.

## **13. PIRMP REVIEW**

Revisions are to be coordinated by the Site Manager and Environmental Representative.

The objectives of a review are:

- To maintain compliance with the statutory requirements, and
- To identify opportunities for improvement in the Plan, and reduce the risk to human health and the environment

### *13.1. EVENT BASED*

Events which may trigger a review of this Plan or its associated documents include:

- Within 1 month of reporting to the nominated parties in accordance with the plan, after a pollution incident, or
- Modification/Improvement to the system

### *13.2. TIME BASED*

Talbragar Quarry will review this management plan routinely every 12 months. The Plan review will include:

- This Document, and
- Legislation, Approval and Licence changes.

PUBLIC

## APPENDIX 1.

### RISK ASSESSMENT on POTENTIAL IMPACTS

Hazard and Likelihood Risk Assessment and Corrective Control Measures									
Site: Talbragar Quarry				Responsible Person: Quarry Manager/Supervisor			Review Date: 31/8/2023		
Name / ref of pollutant/ chemicals	Description of Hazard / Incident leading to hazard	Consequence	Likely hood	Risk	Impact on neighbours <sup>3</sup>	Control Measures Corrective Action Coverage under other Plans	Responsible person	Action date	
Diesel	<b>Incident #1</b> Catastrophic failure of one/both above ground tanks	1	2	L	N/A	Consequence: (Incidental): Failure resulting in loss of all or substantial volume of tanks would be captured entirely by existing primary bund with no release to soil or water.  Likelihood: (Unlikely): Due to location within bund, damage to tanks is unlikely to occur from external equipment. In addition, tanks are maintained in good structural integrity with low risk of failure through corrosion.	As per PIRMP action plan	When required	
	<b>Incident #2</b> Loss of diesel outside bund during refuelling/fuelling operations.	1	3	L	N/A	Consequence: (Minor): Failure resulting in loss/leakage from fuelling or re-fuelling from hose, nozzle or plant/equipment would be captured by a secondary bund or spill kill with minimal release to soil.  Likelihood: (Possible): Due to location within the bund an incident while re-fuelling and fuelling is likely to occur on some occasions. Hoses and refuelling equipment are maintained with low risk of failure.	As per PIRMP action plan	When required	
	<b>Incident #3</b> Loss of fuel within banded area with leaking or open drain valve	1	2	L	N/A	Consequence: (Incidental): Failure resulting in loss of all or substantial volume of tanks would be captured entirely by primary bund with minimal release to soil.  Likelihood: (Unlikely): Drain valve, hoses and refuelling equipment are	As per PIRMP action plan	When required	

<sup>3</sup> If the incident may impact on neighbours, then it will need to trigger the early warnings assessment and actions



						maintained in good structural integrity with low risk of failure. The drain valve is locked at all times.		
<b>Oils/Solvents</b>	<b>Incident #4</b> Loss of oils solvents inside bund during delivery and or use	1	2	L	N/A	Consequence :(Incidental): Failure resulting in loss of oils/solvents from packaged goods would be captured entirely by existing primary bund with no release to soil or water.  Likelihood :(Unlikely): Due to location within the bund, spillage during delivery and use is unlikely to occur. In addition, hoses and decanting equipment are maintained in good structural integrity with low risk of failure.	As per PIRMP action plan	When required
<b>Aggregate stockpiles</b>	<b>Incident #5.</b> Excessive airborne dust from stockpiled material	2	2	L	Y	Consequence: (Minor): Excessive dust from stockpile during high winds causing nuisance to surrounding area.  Likelihood :(Unlikely): Stockpiles are maintained to a manageable level on a monthly basis. Use of water sprinklers and water cart onsite during windy periods.	As per PIRMP action plan	When required
<b>Sediment Dams</b>	<b>Incident #6</b> Catastrophic failure of one or more sediment dams releasing large volumes of water into on-site and off-site water courses (i.e. creek).	2	2	L	N/A	Consequence: (Minor): Catastrophic failure of one or more sediment dams are likely to result in off-site impacts to water courses which would predominantly reduce water quality over a short period of time. As such, impact to the environment/human health is not considered to be significant.  Likelihood: (unlikely): Dams are frequently monitored and inspected for levels and integrity. During excessive ongoing rain events that may result in localised flooding excess stored water from onsite dams will be pumped/emptied/overflowed to Quarry 2 for store and reuse  Risk Assessment = Moderate Vs Unlikely = L (2)  <b>Note:</b> For PIRMP purposes overflow events during extreme wet weather or flood events will be reported under POEO Licence obligations and not Immediate Reporting.	As per PIRMP action plan	When required
<b>Mobile Plant</b>	<b>Incident #7</b> Mobile plant, hydraulic hose, or fuel tank failure	1	2	L	N	Consequence: (incidental): Failure from fuel tank or hydraulic hoses would be maintain to a small localised area on site.  Likelihood :( unlikely): Hose or fuel tank failure from mobile plant would be minimal as prestart and regular maintenance programs are in place to capture and prevent such occurrences. Spills kits also maintain and available in various areas.	As per PIRMP action plan	When required

<b>Mobile plant/ Contractor, Visitor</b>	<b>Incident #8</b> Mobile plant, hydraulic hose, or fuel tank failure	1	2	L	N	Consequence: (incidental): Failure from fuel tank or hydraulic hoses would be maintain to a small localised area on site.  Likelihood :(unlikely): Hose or fuel tank failure from mobile plant would be minimal as prestart and regular maintenance programs are in place to capture and prevent such occurrences. Spills kits also maintain and available in various areas. Inductions for all contractors demonstrating their accountabilities and responsibilities for reporting environmental incidents.	As per PIRMP action plan	When required
<b>Car Park</b>	<b>Incident #9</b> Ruptured fuel tank	1	2	L	N	Consequence: (incidental): Failure from fuel tank or hydraulic hoses would be maintain to a small localised area on site.  Likelihood :( unlikely): Hose or fuel tank failure from employee or visitor car would be minimal. Car park area is fully sealed. Spill kits also maintain and available in various areas	As per PIRMP action plan	When required
<b>Traffic areas (dust)</b>	<b>Incident # 10</b> Surface dust from mobile plant	1	2	L	Y	Consequence: (incidental): Dust created form continuous mobile plant operations across site  Likelihood :(unlikely): Main areas watered with water cart in high wind conditions	As per PIRMP action plan	When required

\* NB: Explosives are not stored onsite. As such explosives are not addressed in the potential Onsite Impacts

**PART B: INCIDENT RESPONSE ACTIONS AND NOTIFICATION LOGS**

PUBLIC

## 14. PIRMP RESPONSE ACTIONS

### Incident No 1

<b>Incident #1</b>	<p><b>Catastrophic failure of one/both diesel tanks.</b></p> <p>Actions Required:</p> <ul style="list-style-type: none"> <li>• Contact all relevant people/department (refer to Immediate Reporting Contact Sheet)</li> <li>• Ensure bunds are capturing full volume of diesel</li> <li>• Ensure bund integrity is sound throughout the entire period of incident (i.e. periodic inspections)</li> <li>• Contact service provider (Caltex No. 1800033111 or Transpacific 02 96007185) to pump-out bund contents</li> <li>• Area to be restricted to Incident Response Personnel</li> <li>• Ensure spill kit available for any release from bund</li> <li>• If any release from bund onto unsealed soil/surface water - Environmental Consultants to be engaged to investigate and remediate contamination.</li> <li>• Repair/replace tanks</li> <li>• Refuel tanks</li> </ul> <p>Inspect bund for ongoing serviceability</p>
<b>Alarm raising</b>	Any personnel involved or witnessing incident to report to immediate supervisor and PIRMP actions to be implemented.
<b>Emergency Controller</b>	<ul style="list-style-type: none"> <li>• Quarry Manager</li> <li>• Call service provider (Quarry Manager)</li> <li>• Spill Kit manager (Supervisor)</li> <li>• Periodic inspections and update reporting of site and bund (Quarry Manager)</li> </ul>
<b>Scale of incident</b>	Incident would be restricted to Diesel/Precoat storage area with minimal external impact, however, potential for bund overflow or failure may result in soil and surface water contamination that will require specialist investigation/remediation.
<b>Evacuate</b>	Only if fire or explosion potential exists. Quarry Manager and any advice provided by Fire Dept as part of attendance after immediate notification.
<b>Communications</b>	<p>Internal:</p> <ul style="list-style-type: none"> <li>• Quarry Manager</li> <li>• Environmental Representative</li> </ul> <p>External mandatory:</p> <ul style="list-style-type: none"> <li>• Immediate Reporting Contact Sheet to be used</li> </ul> <p>External non-mandatory: N/A</p>
<b>Rescuer / respondent + safety checks</b>	As per Site Emergency Plan or Fire Department as part of Immediate Reporting
<b>Rescue + First Aid</b>	As per Site Emergency Plan or Fire Department as part of Immediate Reporting
<b>Clean up and Waste disposal</b>	Service Provider to dispose of diesel and advise on required clean-up.
<b>Reporting and re-preparedness</b>	HSEQ 3-02 Incident Reporting Investigation and Action Management

## Incident No 2

<b>Incident #2</b>	<p><b>Loss of Fuel due to filling and refueling from one/both diesel tanks.</b></p> <p>Actions Required:</p> <ul style="list-style-type: none"> <li>• Contact all relevant people/department (refer to Immediate Reporting Contact Sheet)</li> <li>• Ensure bunds are capturing full volume of diesel</li> <li>• Ensure bund integrity is sound throughout the entire period of incident (i.e. periodic inspections)</li> <li>• Contact service provider (Caltex No. 1800033111 or Transpacific 02 96007185) to pump-out bund contents</li> <li>• Area to be restricted to Incident Response Personnel</li> <li>• Ensure spill kit available for any release from bund</li> <li>• If any release from bund onto unsealed soil/surface water - Environmental Consultants to be engaged to investigate and remediate contamination.</li> <li>• Repair/replace tanks</li> <li>• Refuel tanks</li> </ul> <p>Inspect bund for ongoing serviceability</p>
<b>Alarm raising</b>	Any personnel involved or witnessing incident to report to immediate supervisor and PIRMP actions to be implemented.
<b>Emergency Controller</b>	<ul style="list-style-type: none"> <li>• Quarry Manager</li> <li>• Call service provider (Quarry Manager)</li> <li>• Spill Kit manager (Supervisor)</li> <li>• Periodic inspections and update reporting of site and bund (Quarry Manager)</li> </ul>
<b>Scale of incident</b>	Incident would be restricted to Diesel/Precoat storage area with minimal external impact. However, potential for bund overflow or failure may result in soil and surface water contamination that will require specialist investigation/remediation.
<b>Evacuate</b>	Only if fire or explosion potential exists. Quarry Manager and any advice provided by Fire Dept as part of attendance after immediate notification.
<b>Communications</b>	<p>Internal:</p> <ul style="list-style-type: none"> <li>• Quarry Manager</li> <li>• Environmental Representative</li> </ul> <p>External mandatory:</p> <ul style="list-style-type: none"> <li>• Immediate Reporting Contact Sheet to be used</li> </ul> <p>External non-mandatory: N/A</p>
<b>Rescuer / respondent + safety checks</b>	As per Site Emergency Plan or Fire Department as part of Immediate Reporting
<b>Rescue + First Aid</b>	As per Site Emergency Plan or Fire Department as part of Immediate Reporting
<b>Clean up and Waste disposal</b>	Service Provider to dispose of diesel and advise on required clean-up.
<b>Reporting and re-preparedness</b>	HSEQ 3-02 Incident Reporting Investigation and Action Management

## Incident No 3

<b>Incident #3</b>	<p><b>Failure of drain valve on bund.</b></p> <p>Actions Required:</p> <ul style="list-style-type: none"> <li>• Contact all relevant people/department (refer to Immediate Reporting Contact Sheet)</li> <li>• Ensure bunds are capturing full volume of diesel</li> <li>• Ensure bund integrity is sound throughout the entire period of incident (i.e. periodic inspections)</li> <li>• Contact service provider (Caltex No. 1800033111 or Transpacific 02 96007185) to pump-out bund contents</li> <li>• Area to be restricted to Incident Response Personnel</li> <li>• Ensure spill kit available for any release from bund</li> <li>• If any release from bund onto unsealed soil/surface water - Environmental Consultants to be engaged to investigate and remediate contamination.</li> <li>• Repair/replace tanks</li> <li>• Refuel tanks</li> </ul> <p>Inspect bund for ongoing serviceability</p>
<b>Alarm raising</b>	Any personnel involved or witnessing incident to report to immediate supervisor and PIRMP actions to be implemented.
<b>Emergency Controller</b>	<ul style="list-style-type: none"> <li>• Quarry Manager</li> <li>• Call service provider (Quarry Manager)</li> <li>• Spill Kit manager (Supervisor)</li> <li>• Periodic inspections and update reporting of site and bund (Quarry Manager)</li> </ul>
<b>Scale of incident</b>	Incident would be restricted to chemical storage area with minimal external impact. However, potential for bund overflow or failure may result in soil and surface water contamination that will require specialist investigation/remediation.
<b>Evacuate</b>	Only if fire or explosion potential exists. Quarry Manager and any advice provided by Fire Dept as part of attendance after immediate notification.
<b>Communications</b>	<p>Internal:</p> <ul style="list-style-type: none"> <li>• Quarry Manager</li> <li>• Environmental Representative</li> </ul> <p>External mandatory:</p> <ul style="list-style-type: none"> <li>• Immediate Reporting Contact Sheet to be used</li> </ul> <p>External non-mandatory: N/A</p>
<b>Rescuer / respondent + safety checks</b>	As per Site Emergency Plan or Fire Department as part of Immediate Reporting
<b>Rescue + First Aid</b>	As per Site Emergency Plan or Fire Department as part of Immediate Reporting
<b>Clean up and Waste disposal</b>	Service Provider to dispose of diesel and advise on required clean-up.
<b>Reporting and re-preparedness</b>	HSEQ 3-02 Incident Reporting Investigation and Action Management

## Incident No 4

<b>Incident #4</b>	<p><b>Loss off oil/solvents, packaged goods.</b></p> <p>Actions Required:</p> <ul style="list-style-type: none"> <li>• Contact all relevant people/department (refer to Immediate Reporting Contact Sheet)</li> <li>• Ensure bunds are capturing full volume of oil/solvents</li> <li>• Ensure bund integrity is sound throughout the entire period of incident (i.e. periodic inspections)</li> <li>• Contact service provider (Caltex No. 1800033111 or Transpacific 02 96007185) to pump-out bund contents</li> <li>• Area to be restricted to Incident Response Personnel</li> <li>• Ensure spill kit available for any release from bund</li> <li>• If any release from bund onto unsealed soil/surface water - Environmental Consultants to be engaged to investigate and remediate contamination.</li> <li>• Inspect bund for ongoing serviceability</li> </ul>
<b>Alarm raising</b>	Any personnel involved or witnessing incident to report to immediate supervisor and PIRMP actions to be implemented.
<b>Emergency Controller</b>	<ul style="list-style-type: none"> <li>• Quarry Manager</li> <li>• Call service provider (Quarry Manager)</li> <li>• Spill Kit manager (Supervisor)</li> <li>• Periodic inspections and update reporting of site and bund (Quarry Manager)</li> </ul>
<b>Scale of incident</b>	Incident would be restricted to chemical storage area with minimal external impact. However, potential for bund overflow or failure may result in soil and surface water contamination that will require specialist investigation/remediation.
<b>Evacuate</b>	Only if fire or explosion potential exists. Quarry Manager and any advice provided by Fire Dept as part of attendance after immediate notification.
<b>Communications</b>	<p>Internal:</p> <ul style="list-style-type: none"> <li>• Quarry Manager</li> <li>• Environmental Representative</li> </ul> <p>External mandatory:</p> <ul style="list-style-type: none"> <li>• Immediate Reporting Contact Sheet to be used</li> </ul> <p>External non-mandatory: N/A</p>
<b>Rescuer / respondent + safety checks</b>	As per Site Emergency Plan or Fire Department as part of Immediate Reporting
<b>Rescue + First Aid</b>	As per Site Emergency Plan or Fire Department as part of Immediate Reporting
<b>Clean up and Waste disposal</b>	Service Provider to dispose of diesel, oil, grease and advise on required clean-up.
<b>Reporting and re-preparedness</b>	HSEQ 3-02 Incident Reporting Investigation and Action Management

## Incident No 5

<b>Incident #5</b>	<p><b>Excessive airborne dust from stockpiled material.</b></p> <p>Actions Required:</p> <ul style="list-style-type: none"> <li>• Employees, Contractor/Visitor to notify site representative of issue immediately. (induction)</li> <li>• Daily monitoring to be undertaken to assess weather and site conditions</li> <li>• Contact all relevant people/department (refer to Immediate Reporting Contact Sheet)</li> <li>• Dust suppression activity to commence immediately on stockpiles</li> </ul>
<b>Alarm raising</b>	Any personnel involved or witnessing incident to report to immediate supervisor and PIRMP actions to be implemented.
<b>Emergency Controller</b>	<ul style="list-style-type: none"> <li>• Quarry Manager</li> <li>• Call service provider (Quarry Manager)</li> <li>• Spill Kit manager (Supervisor)</li> <li>• Periodic inspections and update reporting of site and bund (Quarry Manager)</li> </ul>
<b>Scale of incident</b>	Incident would be localised to the area surrounding stockpile area, with minimal external impact.
<b>Evacuate</b>	Only if fire or explosion potential exists. Quarry Manager and any advice provided by Fire Dept as part of attendance after immediate notification.
<b>Communications</b>	<p>Internal:</p> <ul style="list-style-type: none"> <li>• Quarry Manager</li> <li>• Environmental Representative</li> </ul> <p>External mandatory:</p> <ul style="list-style-type: none"> <li>• Immediate Reporting Contact Sheet to be used</li> </ul> <p>External non-mandatory: N/A</p>
<b>Rescuer / respondent + safety checks</b>	As per Site Emergency Plan or Fire Department as part of Immediate Reporting
<b>Rescue + First Aid</b>	As per Site Emergency Plan or Fire Department as part of Immediate Reporting
<b>Clean up and Waste disposal</b>	Service Provider to dispose of diesel and advise on required clean-up.
<b>Reporting and re-preparedness</b>	HSEQ 3-02 Incident Reporting Investigation and Action Management



## Incident No 6

<b>Incident #6</b>	<p><b>Failure of one or more sediment dams.</b></p> <p>Actions Required:</p> <ul style="list-style-type: none"> <li>• Contact all relevant people/department (refer to Immediate Reporting Contact Sheet)</li> <li>• Ensure bund integrity is sound throughout the entire period of incident (i.e. periodic inspections)</li> <li>• Contact local neighbours if going to be inundated by rise of water</li> <li>• Area to be restricted to Incident Response Personnel</li> <li>• If any release from site onto unsealed soil/surface water - Environmental Consultants to be engaged to investigate and remediate contamination if any</li> <li>• Contact local contractor to rebuild dams immediately</li> </ul>
<b>Alarm raising</b>	Any personnel involved or witnessing incident to report to immediate supervisor and PIRMP actions to be implemented.
<b>Emergency Controller</b>	<ul style="list-style-type: none"> <li>• Quarry Manager</li> <li>• Call service provider (Quarry Manager)</li> <li>• Spill Kit manager (Supervisor)</li> <li>• Periodic inspections and update reporting of site and bund (Quarry Manager)</li> </ul>
<b>Scale of incident</b>	Catastrophic failure of one or more sediment dams are likely to result in off-site impacts to water courses which would predominantly reduce water quality over a short period of time. As such, impact to the environment/human health is not considered to be significant.
<b>Evacuate</b>	Only if flood potential exists. Quarry Manager and any advice provided by Fire Dept as part of attendance after immediate notification.
<b>Communications</b>	<p>Internal:</p> <ul style="list-style-type: none"> <li>• Quarry Manager</li> <li>• Environmental Representative</li> </ul> <p>External mandatory:</p> <ul style="list-style-type: none"> <li>• Immediate Reporting Contact Sheet to be used</li> </ul> <p>External non-mandatory: N/A</p>
<b>Rescuer / respondent + safety checks</b>	As per Site Emergency Plan or Fire Department as part of Immediate Reporting
<b>Rescue + First Aid</b>	As per Site Emergency Plan or Fire Department as part of Immediate Reporting
<b>Clean up and Waste disposal</b>	Consultants to be contacted to advise on required clean-up.
<b>Reporting and re-preparedness</b>	HSEQ 3-02 Incident Reporting Investigation and Action Management

## Incident No 7

<b>Incident #7</b>	<p><b>Mobile plant, hydraulic hose, or fuel tank failure.</b></p> <p>Actions Required:</p> <ul style="list-style-type: none"> <li>• Contact all relevant people/department (refer to Immediate Reporting Contact Sheet)</li> <li>• Area to be restricted to Incident Response Personnel</li> <li>• Ensure spill kit available for any release from mobile plant &amp; equipment</li> <li>• If any release from mobile plant onto unsealed soil/surface water is investigated and remediated immediately</li> <li>• Call service provider to inspect plant &amp; equipment for serviceability</li> </ul>
<b>Alarm raising</b>	Any personnel involved or witnessing incident to report to immediate supervisor and PIRMP actions to be implemented.
<b>Emergency Controller</b>	<ul style="list-style-type: none"> <li>• Quarry Manager</li> <li>• Call service provider (Quarry Manager)</li> <li>• Spill Kit manager (Supervisor)</li> <li>• Periodic inspections and update reporting of site and bund (Quarry Manager)</li> </ul>
<b>Scale of incident</b>	Incident would be localised to the area with no external impact.
<b>Evacuate</b>	Only if fire or explosion potential exists. Quarry Manager and any advice provided by Fire Dept as part of attendance after immediate notification.
<b>Communications</b>	<p>Internal:</p> <ul style="list-style-type: none"> <li>• Quarry Manager</li> <li>• Environmental Representative</li> </ul> <p>External mandatory:</p> <ul style="list-style-type: none"> <li>• Immediate Reporting Contact Sheet to be used</li> </ul> <p>External non-mandatory: N/A</p>
<b>Rescuer / respondent + safety checks</b>	As per Site Emergency Plan or Fire Department as part of Immediate Reporting
<b>Rescue + First Aid</b>	As per Site Emergency Plan or Fire Department as part of Immediate Reporting
<b>Clean up and Waste disposal</b>	Service Provider to dispose of diesel and advise on required clean-up.
<b>Reporting and re-preparedness</b>	HSEQ 3-02 Incident Reporting Investigation and Action Management

## Incident No 8

<b>Incident #8</b>	<p><b>Mobile plant, hydraulic hose, or fuel tank failure from contractors / visitors.</b></p> <p>Actions Required:</p> <ul style="list-style-type: none"> <li>• Contractor/Visitor to notify site representative of issue immediately. (induction)</li> <li>• Contact all relevant people/department (refer to Immediate Reporting Contact Sheet)</li> <li>• Area to be restricted to Incident Response Personnel</li> <li>• Ensure spill kit available for any release from mobile plant &amp; equipment</li> <li>• If any release from mobile plant onto unsealed soil/surface water is investigated and remediated immediately</li> <li>• Call service provider to inspect plant &amp; equipment for serviceability</li> </ul>
<b>Alarm raising</b>	Any personnel involved or witnessing incident to report to immediate supervisor and PIRMP actions to be implemented.
<b>Emergency Controller</b>	<ul style="list-style-type: none"> <li>• Quarry Manager</li> <li>• Call service provider (Quarry Manager)</li> <li>• Spill Kit manager (Supervisor)</li> <li>• Periodic inspections and update reporting of site and bund (Quarry Manager)</li> </ul>
<b>Scale of incident</b>	Incident would be localised to the area with no external impact.
<b>Evacuate</b>	Only if fire or explosion potential exists. Plant Manager and any advice provided by Fire Dept as part of attendance after immediate notification.
<b>Communications</b>	<p>Internal:</p> <ul style="list-style-type: none"> <li>• Quarry Manager</li> <li>• Environmental Representative</li> </ul> <p>External mandatory:</p> <ul style="list-style-type: none"> <li>• Immediate Reporting Contact Sheet to be used</li> </ul> <p>External non-mandatory: N/A</p>
<b>Rescuer / respondent + safety checks</b>	As per Site Emergency Plan or Fire Department as part of Immediate Reporting
<b>Rescue + First Aid</b>	As per Site Emergency Plan or Fire Department as part of Immediate Reporting
<b>Clean up and Waste disposal</b>	Service Provider to dispose of contaminates.
<b>Reporting and re-preparedness</b>	HSEQ 3-02 Incident Reporting Investigation and Action Management

## Incident No 9

<b>Incident #9</b>	<p><b>Car Park/ fuel tank failure.</b></p> <p>Actions Required:</p> <ul style="list-style-type: none"> <li>• Contractor/Visitor to notify site representative of issue immediately. (induction)</li> <li>• Area to be restricted to Incident Response Personnel</li> <li>• Ensure spill kit available for any release from mobile plant</li> <li>• If any release from mobile plant onto unsealed soil/surface water is investigated and remediated immediately</li> </ul>
<b>Alarm raising</b>	Any personnel involved or witnessing incident to report to immediate supervisor and PIRMP actions to be implemented.
<b>Emergency Controller</b>	<ul style="list-style-type: none"> <li>• Quarry Manager</li> <li>• Spill Kit manager (Supervisor)</li> </ul>
<b>Scale of incident</b>	Incident would be localised to the area with no external impact.
<b>Evacuate</b>	Only if fire or explosion potential exists. Plant Manager and any advice provided by Fire Dept as part of attendance after immediate notification.
<b>Communications</b>	<p>Internal:</p> <ul style="list-style-type: none"> <li>• Quarry Manager</li> <li>• Environmental Representative</li> </ul> <p>External mandatory:</p> <ul style="list-style-type: none"> <li>• Immediate Reporting Contact Sheet to be used</li> </ul> <p>External non-mandatory: N/A</p>
<b>Rescuer / respondent + safety checks</b>	As per Site Emergency Plan or Fire Department as part of Immediate Reporting
<b>Rescue + First Aid</b>	As per Site Emergency Plan or Fire Department as part of Immediate Reporting
<b>Clean up and Waste disposal</b>	Service Provider to dispose of contaminate
<b>Reporting and re-preparedness</b>	HSEQ 3-02 Incident Reporting Investigation and Action Management

## Incident No 10

<b>Incident #10</b>	<p><b>Dust from traffic areas.</b></p> <p>Actions Required:</p> <ul style="list-style-type: none"> <li>• Employees, Contractor/Visitor to notify site representative of issue immediately. (induction)</li> <li>• Daily monitoring to be undertaken to capture whether and site conditions</li> <li>• Contact all relevant people/department (refer to Immediate Reporting Contact Sheet)</li> <li>• Dust suppression activity to commence immediately on unsealed roads &amp; dusty areas of site</li> </ul>
<b>Alarm raising</b>	Any personnel involved or witnessing incident to report to immediate supervisor and PIRMP actions to be implemented.
<b>Emergency Controller</b>	<ul style="list-style-type: none"> <li>• Quarry Manager</li> <li>• Quarry Manager to instruct site personnel (Quarry Manager)</li> </ul>
<b>Scale of incident</b>	Incident would be localised to the area with minimal external impact.
<b>Evacuate</b>	Only if fire or potential exists. Plant Manager and any advice provided by Fire Dept as part of attendance after immediate notification.
<b>Communications</b>	<p>Internal:</p> <ul style="list-style-type: none"> <li>• Quarry Manager</li> </ul> <p>External mandatory:</p> <ul style="list-style-type: none"> <li>• Immediate Reporting Contact Sheet to be used if required</li> </ul> <p>External non-mandatory: N/A</p>
<b>Rescuer / respondent + safety checks</b>	As per Site Emergency Plan or Fire Department as part of Immediate Reporting
<b>Rescue + First Aid</b>	As per Site Emergency Plan or Fire Department as part of Immediate Reporting
<b>Clean up and Waste disposal</b>	N/A
<b>Reporting and re-preparedness</b>	HSEQ 3-02 Incident Reporting Investigation and Action Management

## 15. POLLUTION INCIDENT NOTIFICATION LOG

Person undertaking notification (Name/Function):		
Date and time when first become aware of the incident:		
Incident type:		
Comments:		

<b>Initial immediate notification log</b>				
<b>Appropriate Regulatory Authority</b>	<b>Time of call</b>	<b>Respondent's name/function</b>	<b>Approximate call duration</b>	<b>Comments</b>
EPA				
Public Health Unit				
Fire and Rescue NSW				
Local Council				
SafeWork				
Other:				
Other:				
Summary of initial communication:				

Person undertaking notification (Name/Function):		
Date and time when additional information become available:		
Comments:		

Immediate notification of further pertinent information (if applicable)				
Appropriate Regulatory Authority	Time of call	Respondent's name/function	Approximate call duration	Comments
EPA				
Public Health Unit				
Fire and Rescue NSW				
Local Council				
SafeWork				
Other:				
Other:				
Summary of additional communication				

## 16. IMMEDIATE NOTIFICATION SHEET SUMMARY

Table 8 - Internal Reporting List

Name	Function	Phone number	Mobile number
	Quarry Operations Manager - West		
	Quarry Supervisor		
	HS Advisor – NSW/ACT		
	Senior Environment Business Partner – NSW/ACT		

Table 9 - External Reporting List

Government Authority - compulsory notifications	Emergency notification phone number
EPA – Environment Line	131 555
NSW Police & Ambulance	000
Fire & Rescue NSW (FRNSW)	1300 729 579
Dubbo City Council	6801 4000
Public Health Unit (Dubbo)	Ph: 02 6885 8666 (Dubbo Base Hospital) - ask for Public Health Officer on call, if no answer: Mob: 0418 866 397 - ask for Public Health Officer on call
SafeWork NSW	131050 Company ABN if asked: 51 000 187 002
Government Authority - ring if relevant	Emergency notification phone number
Roads and Maritime Services (road spills)	132 701
NSW Office of Water	8838 7885
Bush Fire Control Officer	1800 049 933
Poisons Information Centre	131 126
Essential Energy (power line emergencies)	13 20 80