

Seaham Quarry Project

Aboriginal Cultural Heritage assessment



Building something great

December 2023



In accordance with the Secretary's Environmental Assessment Requirements (SEARs), an Aboriginal cultural heritage assessment (ACHA) was undertaken as part of preparing the Environmental Impact Statement (EIS), for the Project.

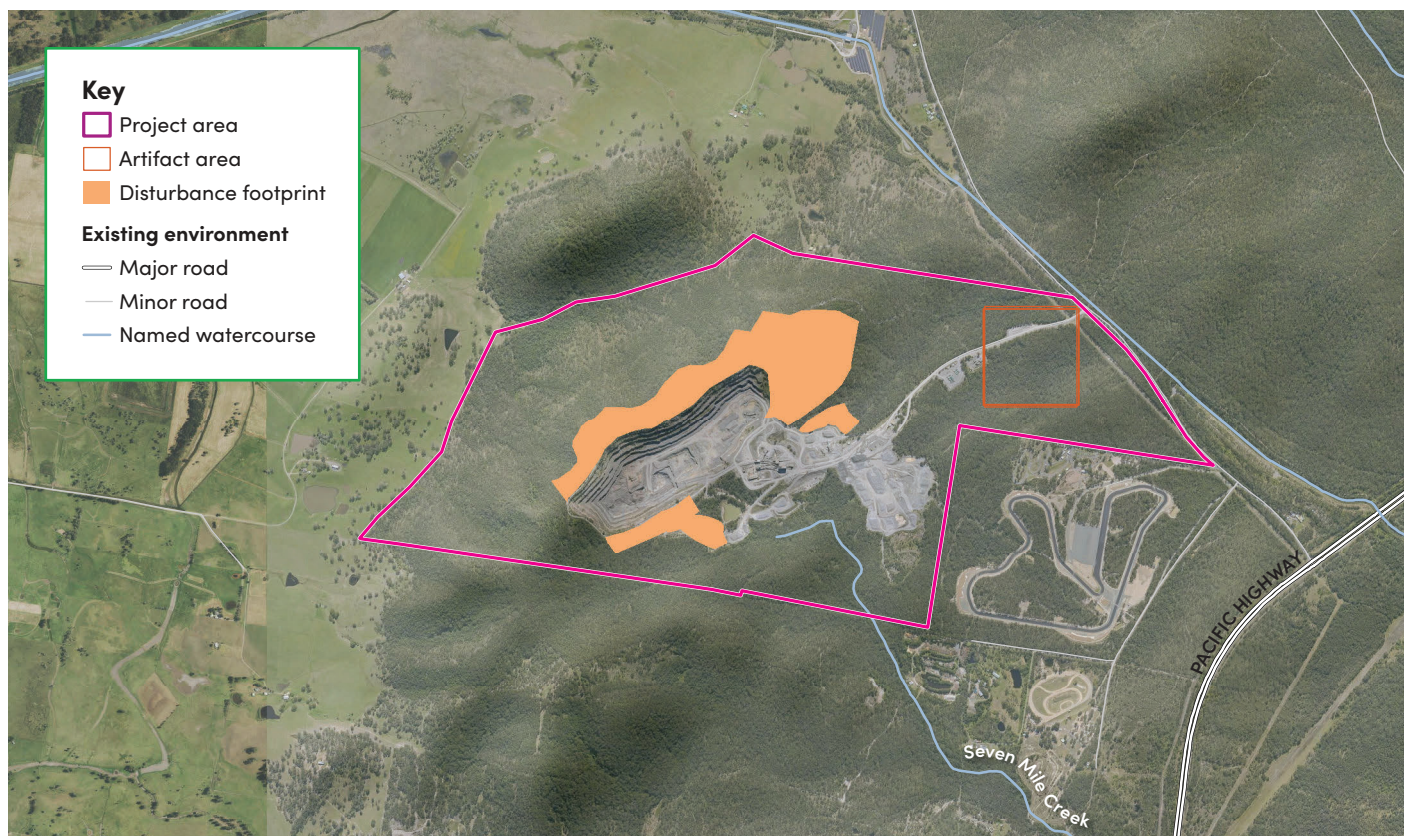
The ACHA involved:

- Analysing environmental and archaeological data and research to identify items previously found in the area to inform the analysis
- A physical site inspection of the Project area with the local Worimi people
- Consulting with 14 registered Aboriginal parties (RAPs) including members of the Worimi community, and non-local groups to gather knowledge about any culturally significant objects or sites within the Project area.

Key findings

The ACHA found that the Project is unlikely to impact Aboriginal heritage.

Three stone artefacts were identified within the Project area, in the north-eastern corner of the site, away from current and proposed quarrying activities. The assessment concluded these sites will not be impacted by the Project.



Stone artefact locations

Management/ mitigation measures

The ACHA recommends an Aboriginal Cultural Heritage Management Plan be prepared, to ensure cultural heritage values are considered and managed during construction and operations.



Site inspection photo



Site inspection photo



Balickera Pumping Station

Historic Heritage assessment



The historic heritage assessment included:

- Undertaking research to determine past land use and identify any potential historically significant objects or sites within or near the Project area
- Site surveys and investigations
- Considering the findings of the visual amenity assessment, undertaken for Project.

Key findings

The historical heritage investigations determined there are not any historically significant sites within the Project area.

Three historically significant sites were identified nearby, outside the Boral-owned land. These included:

- Balikera House
- Grahamstown Canal
- Balickera Pumping Station.

The assessment found there may be some visual amenity impacts at these three sites.

Management/ mitigation measures

The historical heritage investigation recommends a procedure be developed and included in the site Construction Environmental Management Plan, in the event of an unexpected, historical significance find.