



Peppertree Quarry

Environmental Monitoring Report

June 2018

Date Published: 7th August 2018



Peppertree Quarry Environmental Monitoring Report

This monitoring report is to satisfy the requirements of Section 66 (6) of the Protection of the Environment and Operations Act 1997, to make available, within 14 days of request, any monitoring data that relates to pollution under an Environment Protection Licence.

The monitoring of pollutants provided in this report is undertaken as per the requirements of Environment Protection Licence 13088 (EPL 13088 – Boral Peppertree Quarry)

This report provides environmental monitoring data for Peppertree Quarry for the period 1st to 30th for June 2018.

Peppertree Quarry Information	
Premise Details	Boral – Peppertree Quarry
Address	843 Marulan South Road, Marulan
Licensee	Boral Resources (NSW) PTY LTD
EPL N ^o	13088
EPL Location	http://app.epa.nsw.gov.au/prpoeoapp/ViewPOEOLicence.aspx?DOCID=33060&SYSUID=1&LICID=13088

Monitoring data in this report relates to the monitoring undertaken in June 2018 for the following environmental pollutants:

- Deposited Dust
- Dust PM10
- Dust TSP
- Noise
- Blasting

1. Air Quality

Air Quality Monitoring is conducted as per condition M2 of EPL 13088. The air quality results for the reporting period are tabled below.

1.1 Deposited Dust

Deposited Dust (g/m²/month) results for June 2018.

Sample Period: June 2018
 Date received: 23/7/2018
 Licensee: Peppertree Quarry
 Licensee Address: 843 Marulan South Road, Marulan, NSW 2579
 EPL No: 13088

Qualifications related to Dust

Frequency of monitoring - Monthly

Air Emissions Monitoring - Dust Deposition Gauge

Results					
June2018					
<u>Location</u>	<u>Ash</u> g/m ² /month	<u>Insoluble solids</u> g/m ² /month	<u>Soluble Solids</u> g/m ² /month	<u>Running Annual</u> <u>Average - ASH</u> g/m ² /month	<u>Running</u> <u>Annual</u> <u>Average</u> <u>Insoluble Solids</u> g/m ² /month
Monitoring Point 1 (D1)	4.90	8.63	9.57	4.27	8.77
Monitoring Point 2 (D2)	2.37	3.21	0.36	2.31	3.33
Monitoring Point 3 (D3)	2.24	3.61	2.21	2.09	3.89

The deposited dust data for the reporting period indicates that the deposited dust results range from 23.21 g/m²/month of insoluble solids at Monitoring Point 2 to 8.63 g/m²/month of insoluble solids at Monitoring Point 1. Ash is considered a better indicator for the quarries contribution to local dust levels, as it is the material remaining after combustibles are removed from the insoluble solids. The ash level for monitoring point 1 was 4.90 g/m²/month. The running annual average for ash is in line with or below the guideline for all sites at 4.27, 2.31 and 2.09 respectively.

Peppertree Quarry Environmental Monitoring Report

Historical Results					
<u>Location</u>	<u>Ash</u> g/m ² /month	<u>Insoluble solids</u> g/m ² /month	<u>Soluble Solids</u> g/m ² /month	<u>Running Annual Average - ASH</u> g/m ² /month	<u>Running Annual Average Insoluble Solids</u> g/m ² /month
May 2018					
Monitoring Point 1 (D1)	4.58	8.41	4.57	4.11	8.39
Monitoring Point 2 (D2)	1.73	2.7	1.2	2.34	3.4
Monitoring Point 3 (D3)	1.94	3.35	2.59	2.07	3.88
April 2018					
Monitoring Point 1 (D1)	9.07	19.58	8.93	3.86	7.88
Monitoring Point 2 (D2)	3.18	4.81	0.88	2.35	3.39
Monitoring Point 3 (D3)	2.28	3.92	2.28	1.99	3.75
March 2018					
Monitoring Point 1 (D1)	3.22	5.24	5.13	3.29	6.51
Monitoring Point 2 (D2)	3.12	4.54	3.29	2.29	3.27
Monitoring Point 3 (D3)	2.11	3.82	2.95	1.96	3.80
February 2018					
Monitoring Point 1 (D1)	3.59	6.83	2.72	3.17	6.24
Monitoring Point 2 (D2)	2.51	3.52	0.53	2.13	2.99
Monitoring Point 3 (D3)	2.35	6.3	3.42	1.94	3.84
January 2018					
Monitoring Point 1 (D1)	4.07	7.27	5.74	3.09	6.06
Monitoring Point 2 (D2)	3.28	4.09	2.20	2.15	3.05
Monitoring Point 3 (D3)	2.36	4.36	3.45	1.93	3.92
December 2017					
Monitoring Point 1 (D1)	4.2	6.21	4.1	3.00	5.88
Monitoring Point 2 (D2)	1.95	2.47	1.01	2.19	3.21
Monitoring Point 3 (D3)	2.42	5.77	3.88	2.13	4.82
November 2017					
Monitoring Point 1(D1)	8.59	28.18	97.33	2.88	5.65
Monitoring Point 2 (D2)	2.46	3.71	1.49	2.18	3.33
Monitoring Point 3 (D3)	1.56	2.89	1.25	2.14	5.06
October 2017					
Monitoring Point 1	3.2	5.94	4.32	2.02	3.19
Monitoring Point 2	2.73	4.18	2.09	2.05	3.42
Monitoring Point 3	1.78	3.01	2.35	2.10	4.95
September 2017					
Monitoring Point 1	1.82	2.76	0.65	1.88	2.91
Monitoring Point 2	1.64	2.69	1.38	1.91	3.25
Monitoring Point 3	1.97	3.37	2.23	2.05	4.94
August 2017					
Monitoring Point 1	1.62	2.17	0.85	1.83	2.85
Monitoring Point 2	1.16	1.82	0.80	1.87	3.21
Monitoring Point 3	1.35	2.05	1.5	1.97	4.84
July 2017					
Monitoring Point 1	2.36	3.99	1.65	1.86	2.88
Monitoring Point 2	1.61	2.23	0.54	1.87	3.24
Monitoring Point 3	2.72	4.21	1.1	1.95	4.85

Peppertree Quarry Environmental Monitoring Report

<u>Location</u>	<u>Ash</u> g/m ² /month	<u>Insoluble solids</u> g/m ² /month	<u>Soluble Solids</u> g/m ² /month	<u>Running Annual Average - ASH</u> g/m ² /month	<u>Running Annual Average Insoluble Solids</u> g/m ² /month
June 2017					
Monitoring Point 1	3.01	4.09	0.9	1.88	3
Monitoring Point 2	2.73	4.02	0.72	1.85	3.26
Monitoring Point 3	2.04	3.53	2.35	1.84	4.74
May 2017					
Monitoring Point 1	1.6	2.28	0.58	1.81	2.97
Monitoring Point 2	1.83	2.62	0.96	1.73	3.1
Monitoring Point 3	0.9	1.81	1.49	1.74	4.56
April 2017					
Monitoring Point 1	2.14	3.11	1.76	1.79	2.91
Monitoring Point 2	2.46	3.30	1.33	1.62	2.94
Monitoring Point 3	1.9	4.42	2.14	1.75	4.55
March 2017					
Monitoring Point 1	1.79	2.09	2.77	1.78	2.85
Monitoring Point 2	1.20	1.28	1.80	1.57	2.86
Monitoring Point 3	1.88	4.38	3.24	1.69	4.36
February 2017					
Monitoring Point 1	2.62	4.61	4.14	1.73	2.82
Monitoring Point 2	2.70	4.17	0.83	1.59	2.94
Monitoring Point 3	2.22	7.21	4.17	1.63	4.33
January 2017					
Monitoring Point 1	1.33	2.79	2.33	1.64	2.58
Monitoring Point 2	2.33	4.89	2.80	1.49	2.77
Monitoring Point 3	4.34	14.17	5.45	1.59	4.2
December 2016					
Monitoring Point 1	1.27	2.49	1.33	1.58	2.43
Monitoring Point 2	2.04	4.98	1.91	1.41	2.53
Monitoring Point 3	2.29	8.36	4.41	1.35	3.5
November 2016					
Monitoring Point 1	1.46	1.98	1.56	1.64	2.49
Monitoring Point 2	2.20	4.81	3.05	1.45	2.41
Monitoring Point 3	1.78	2.88	2.37	1.37	4.02
October 2016					
Monitoring Point 1	1.56	2.56		1.61	2.57
Monitoring Point 2	1.00	2.21	0.80	1.38	2.21
Monitoring Point 3	1.18	2.94	1.21	1.30	4.13
September 2016					
Monitoring Point 1	1.24	2.06	0.4	2.32	4.24
Monitoring Point 2	1.13	2.24	1.01	1.49	2.33
Monitoring Point 3	1.03	2.06	1.32	1.33	4.13
August 2016					
Monitoring Point 1	1.94	2.5	0.12	2.33	4.19
Monitoring Point 2	1.21	2.11	1.26	1.47	2.23
Monitoring Point 3	1.13	2.23	1.34	1.27	4.01
July 2016					
Monitoring Point 1	2.56	5.41	4.2	2.27	4.14

Peppertree Quarry Environmental Monitoring Report

<u>Location</u>	<u>Ash</u> g/m ² /month	<u>Insoluble solids</u> g/m ² /month	<u>Soluble Solids</u> g/m ² /month	<u>Running Annual Average - ASH</u> g/m ² /month	<u>Running Annual Average Insoluble Solids</u> g/m ² /month
Monitoring Point 2	1.31	2.49	0.50	1.43	2.12
Monitoring Point 3	1.38	2.88	0.47	1.30	4.05
June 2016					
Monitoring Point 1	2.23	3.81	1.41	3.07	5.22
Monitoring Point 2	1.37	2.05	0.95	1.42	2.07
Monitoring Point 3	0.9	1.37	1.27	1.31	4.04
May 2016					
Monitoring Point 1	1.37	1.46	0.49	3.02	5.08
Monitoring Point 2	0.43	0.69	0.28	1.52	2.25
Monitoring Point 3	0.93	1.7	0.61	1.32	4.10
April 2016					
Monitoring Point 1	2.03	2.41	0.45	3.86	6.94
Monitoring Point 2	1.86	2.35	0.85	1.63	2.43
Monitoring Point 3	1.16	2.14	1.44	1.34	4.14
March 2016					
Monitoring Point 1	1.09	1.72	0.18	3.82	6.97
Monitoring Point 2	1.51	2.26	0.15	1.57	2.44
Monitoring Point 3	1.16	4.06	2.57	1.33	4.25
February 2016					
Monitoring Point 1	1.56	1.77	3.53	3.97	7.17
Monitoring Point 2	1.54	2.15	3.32	1.62	2.53
Monitoring Point 3	1.8	5.66	5.45	1.36	4.21
January 2016					
Monitoring Point 1	0.61	1.01	0.5	4.01	7.3
Monitoring Point 2	1.36	1.98	0.55	1.63	2.53
Monitoring Point 3	1.49	5.71	3.29	1.34	4.03
December 2015					
Monitoring Point 1	2.04	3.17	3.95	4.14	7.62
Monitoring Point 2	2.52	3.56	1.75	1.65	2.57
Monitoring Point 3	2.44	14.58	11.38	1.32	3.94
November 2015					
Monitoring Point 1	1.14	2.94	0.46	4.21	7.72
Monitoring Point 2	1.30	2.41	0.59	1.60	2.44
Monitoring Point 3	1.05	4.21	1.29	1.27	3.02
October 2015					
Monitoring Point 1	10.06	22.62	9.01	4.28	7.68
Monitoring Point 2	2.33	3.62	0.94	1.51	2.29
Monitoring Point 3	1.48	2.96	2.03	1.27	3.07
September 2015					
Monitoring Point 1	1.38	1.5	9.25	3.57	6.08
Monitoring Point 2	0.87	1.04	2.61	1.45	2.2
Monitoring Point 3	0.26	0.59	3.72	1.27	3.13
August 2015					
Monitoring Point 1	1.16	1.9	1.02	3.55	6.10
Monitoring Point 2	0.80	0.84	0.74	1.45	2.2
Monitoring Point 3	1.51	2.75	0.32	1.33	3.21

Peppertree Quarry Environmental Monitoring Report

<u>Location</u>	<u>Ash</u> g/m ² /month	<u>Insoluble solids</u> g/m ² /month	<u>Soluble Solids</u> g/m ² /month	<u>Running Annual Average - ASH</u> g/m ² /month	<u>Running Annual Average Insoluble Solids</u> g/m ² /month
July 2015					
Monitoring Point 1	12.2	18.27	5.41	3.61	6.18
Monitoring Point 2	1.15	1.88	0.54	1.47	2.26
Monitoring Point 3	1.48	2.72	0.8	1.29	3.15
June 2015					
Monitoring Point 1	1.57	2.16	2.28	2.70	4.77
Monitoring Point 2	2.57	4.22	4.55	1.46	2.23
Monitoring Point 3	1.03	2.12	4.28	1.31	3.12
May 2015					
Monitoring Point 1	11.52	23.81	8.13	2.65	4.74
Monitoring Point 2	1.70	2.87	0.93	1.32	1.96
Monitoring Point 3	1.25	2.15	1.31	1.28	3.02
April 2015					
Monitoring Point 1	1.49	2.76	1.05	1.77	2.98
Monitoring Point 2	1.17	2.43	1.95	1.25	1.83
Monitoring Point 3	1	3.53	1.78	1.28	3.06
March 2015					
Monitoring Point 1	2.96	4.17	2.73	1.84	3.26
Monitoring Point 2	2.13	3.36	0.44	1.25	1.81
Monitoring Point 3	1.56	3.56	2.33	1.26	2.99
February 2015					
Monitoring Point 1	2.01	3.29	3.67	1.86	3.73
Monitoring Point 2	1.71	2.12	1.81	1.15	1.61
Monitoring Point 3	1.52	3.42	4.05	1.22	3.03
January 2015					
Monitoring Point 1	2.13	4.88	3.99	1.93	4.24
Monitoring Point 2	1.57	2.54	0.23	1.18	1.72
Monitoring Point 3	1.27	4.65	3.32	1.20	2.99

Peppertree Quarry Environmental Monitoring Report

1.2 PM10

PM10 ($\mu\text{g}/\text{m}^3$) results for the month of June 2018

Sample Period: June 2018
Date Received: 10/7/2018
Licensee: Peppertree Quarry
Licensee
Address: 843 Marulan south Road, Marulan NSW 2579
EPL No: 13088

Qualifications related to Dust:

* Air Emissions Monitoring - High Volume Air Sampler
Sampling Frequency is collection of samples over a 24hr period, every 6 days. Protocols are contained in the Air Quality Management Plan found on this website.
Twenty Four (24) hour criteria is $50 \mu\text{g}/\text{m}^3$.
Annual average criteria is 30

Results						
<u>Location</u>	<u>Date</u>	<u>Pollutant</u>	<u>Measurement</u>	<u>Rolling Annual Average</u>	<u>Limit annual average</u>	<u>Unit</u>
Monitoring Point 2	4/7/18	PM10	13.79	25.62	30	$\mu\text{g}/\text{m}^3$
Monitoring Point 2	28/6/18	PM10	10.81	25.44	30	$\mu\text{g}/\text{m}^3$
Monitoring Point 2	22/6/18	PM10	6.90	25.4	30	$\mu\text{g}/\text{m}^3$
Monitoring Point 2	16/6/18	PM10	0.13	25.43	30	$\mu\text{g}/\text{m}^3$

The PM10 data indicates that during the sampling period the rolling annual average data range was between $25.4 \mu\text{g}/\text{m}^3$ and $25.62 \mu\text{g}/\text{m}^3$. Twenty four hour results ranged from 0.13 and $13.79 \mu\text{g}/\text{m}^3$. The annual rolling average results continue to be below the long term criteria.

Peppertree Quarry Environmental Monitoring Report

Historical Results						
Location	Date	Pollutant	Measurement	Rolling Annual Average	Limit annual average	Unit
May 2018						
Monitoring Point 2	10/6/18	PM10	1.58	25.93	30	µg/m ³
Monitoring Point 2	4/6/18	PM10	11.7	26.42	30	µg/m ³
Monitoring Point 2	29/5/18	PM10	49.09	26.21	30	µg/m ³
Monitoring Point 2	23/5/18	PM10	19.87	25.74	30	µg/m ³
Monitoring Point 2	22/5/18	PM10	17.18	25.41	30	µg/m ³
Monitoring Point 2	11/5/18	PM10	1.53	25.23	30	µg/m ³
April 2018						
Monitoring Point 2	30/4/18	PM10	11.86	26.03	30	
Monitoring Point 2	24/4/18	PM10	76.31	25.93	30	µg/m ³
Monitoring Point 2	17/4/18	PM10	50.83	24.44	30	µg/m ³
Monitoring Point 2	12/4/18	PM10	38.61	23.76	30	µg/m ³
Monitoring Point 2	9/4/18	PM10	59.28	23.54	30	µg/m ³
March 2018						
Monitoring Point 2	30/3/18	PM10	26.72	22.46	30	µg/m ³
Monitoring Point 2	24/3/18	PM10	39.56	22.2	30	µg/m ³
Monitoring Point 2	21/3/18	PM10	13.99	21.47	30	µg/m ³
Monitoring Point 2	12/3/18	PM10	16.77	21.54	30	µg/m ³
Monitoring Point 2	6/3/18	PM10	24.61	21.31	30	
February 2018						
Monitoring Point 2	28/2/18	PM10	12.18	20.96	30	µg/m ³
Monitoring Point 2	22/2/18	PM10	37.31	20.89	30	µg/m ³
Monitoring Point 2	19/2/18	PM10	16.64	21.11	30	µg/m ³
Monitoring Point 2	10/2/18	PM10	40.06	21.18	30	µg/m ³
Monitoring Point 2	4/2/18	PM10	24.79	20.47	30	µg/m ³
January 2018						
Monitoring Point 2	29/1/18	PM10	43.09	20.39	30	µg/m ³
Monitoring Point 2	23/1/18	PM10	114.45	19.77	30	µg/m ³
Monitoring Point 2	17/1/18	PM10	51.02	17.53	30	µg/m ³
Monitoring Point 2	11/1/18	PM10	38.41	16.53	30	µg/m ³
Monitoring Point 2	5/1/18	PM10	44.1	16.14	30	µg/m ³
December 2017						
Monitoring Point 2	30/12/17	PM10	17.47	15.35	30	µg/m ³
Monitoring Point 2	28/12/17	PM10	80.86	15.05	30	µg/m ³
Monitoring Point 2	27/12/18	PM10	33.15	14.64	30	µg/m ³
Monitoring Point 2	22/12/17	PM10	23.36	14.51	30	µg/m ³
Monitoring Point 2	20/12/17	PM10	18.88	14.81	30	µg/m ³
Monitoring Point 2	15/12/17	PM10	19.66	15.49	30	µg/m ³
Monitoring Point 2	13/12/17	PM10	41.99	16.41	30	µg/m ³
Monitoring Point 2	7/12/17	PM10	6.27	16.45	30	µg/m ³
Monitoring Point 2	6/12/17	PM10	5.6	17	30	µg/m ³
November 2017						
Monitoring Point 2	30/11/17	PM10	0	17	30	µg/m ³
Monitoring Point 2	24/11/17	PM10	0	017	30	µg/m ³
Monitoring Point 2	18/11/17	PM10	0	17	30	µg/m ³
Monitoring Point 2	12/11/18	PM10	17.47	18.44	30	µg/m ³
Monitoring Point 2	7/11/18	PM10	10.62	18.35	30	µg/m ³
Monitoring Point 2	6/11/18	PM10	0	18.35	30	µg/m ³
Monitoring Point 2	3/11/18	PM10	7.12	18.78	30	µg/m ³

Peppertree Quarry Environmental Monitoring Report

Location	Date	Pollutant	Measurement	Rolling Annual Average	Limit annual average	Unit
October 2017						
Monitoring Point 2	31/10/17	PM10	0	18.78	30	µg/m ³
Monitoring Point 2	26/10/17	PM10	5.48	19.05	30	µg/m ³
Monitoring Point 2	25/10/17	PM10	0	19.05	30	µg/m ³
Monitoring Point 2	19/10/17	PM10	17.2	19.97	30	µg/m ³
Monitoring Point 2	16/10/17	PM10	25.4	19.99	30	µg/m ³
Monitoring Point 2	13/10/17	PM10	0	19.99	30	µg/m ³
Monitoring Point 2	7/10/17	PM10	11.18	20.02	30	µg/m ³
Monitoring Point 2	3/10/17	PM10	13.15	20.12	30	µg/m ³
Monitoring Point 2	1/10/17	PM10	0	20.15	30	µg/m ³
September 2017						
Monitoring Point 2	25/9/17	PM10	6.12	19.96	30	µg/m ³
Monitoring Point 2	22/9/17	PM10	44.27	19.92	30	µg/m ³
Monitoring Point 2	19/9/17	PM10	8.92	19.18	30	µg/m ³
Monitoring Point 2	14/9/17	PM10	5.83	19.16	30	µg/m ³
Monitoring Point 2	13/9/17	PM10	0	19.12	30	µg/m ³
Monitoring Point 2	6/9/17	PM10	1.67	18.91	30	µg/m ³
Monitoring Point 2	1/9/17	PM10	8.66	19.1	30	µg/m ³
August 2017						
Monitoring Point 2	29/8/17	PM10	8.76	19.21	30	µg/m ³
Monitoring Point 2	26/8/17	PM10	0	19.45	30	µg/m ³
Monitoring Point 2	20/8/17	PM10	0	19.27	30	µg/m ³
Monitoring Point 2	17/8/17	PM10	1.23	19.02	30	µg/m ³
Monitoring Point 2	14/8/17	PM10	0	19.43	30	µg/m ³
Monitoring Point 2	8/8/17	PM10	3.87	19.23	30	µg/m ³
Monitoring Point 2	2/8/17	PM10	8.04	19.42	30	µg/m ³
July 2017						
Monitoring Point 2	27/7/17	PM10	26.88	19.32	30	µg/m ³
Monitoring Point 2	21/7/17	PM10	15.97	18.93	30	µg/m ³
Monitoring Point 2	15/7/17	PM10	6.73	18.69	30	µg/m ³
Monitoring Point 2	9/7/17	PM10	3.15	18.64	30	µg/m ³
Monitoring Point 2	3/7/17	PM10	17.7	18.76	30	µg/m ³
June 2017						
Monitoring Point 2	27/6/17	PM10	27.67	18.54	30	µg/m ³
Monitoring Point 2	21/6/17	PM10	6.5	18.25	30	µg/m ³
Monitoring Point 2	15/6/17	PM10	14.01	18.18	30	µg/m ³
Monitoring Point 2	9/6/17	PM10	3.53	18.2	30	µg/m ³
Monitoring Point 2	3/6/17	PM10	17.58	18.15	30	µg/m ³
May 2017						
Monitoring Point 2	28/5/17	PM10	5.69	17.96	30	µg/m ³
Monitoring Point 2	22/5/17	PM10	7.26	17.9	30	µg/m ³
Monitoring Point 2	16/5/17	PM10	8.9	18.74	30	µg/m ³
Monitoring Point 2	10/5/17	PM10	47.86	18.75	30	µg/m ³
Monitoring Point 2	4/5/17	PM10	20.45	18.01	30	µg/m ³
April 2017						
Monitoring Point 2	28/4/17	PM10	5.22	17.79	30	µg/m ³
Monitoring Point 2	22/4/17	PM10	20.7	18.09	30	µg/m ³
Monitoring Point 2	16/4/17	PM10	12.83	18.01	30	µg/m ³
Monitoring Point 2	10/4/17	PM10	4.77	18.27	30	µg/m ³
Monitoring Point 2	4/4/17	PM10	2.02	18.68	30	µg/m ³

Peppertree Quarry Environmental Monitoring Report

Location	Date	Pollutant	Measurement	Rolling Annual Average	Limit annual average	Unit
March 2017						
Monitoring Point 2	29/3/17	PM10	18.92	19	30	µg/m ³
Monitoring Point 2	23/3/17	PM10	5.44	18.96	30	µg/m ³
Monitoring Point 2	17/3/17	PM10	2.74	18.94	30	µg/m ³
Monitoring Point 2	11/3/17	PM10	61.15	19.06	30	µg/m ³
Monitoring Point 2	5/3/17	PM10	26.36	18.87	30	µg/m ³
February 2017						
Monitoring Point 2	27/2/17	PM10	38.37	19	30	µg/m ³
Monitoring Point 2	21/2/17	PM10	52.19	18.53	30	µg/m ³
Monitoring Point 2	15/2/17	PM10	64.66	17.95	30	µg/m ³
Monitoring Point 2	9/2/17	PM10	43.81	17.52	30	µg/m ³
Monitoring Point 2	3/2/17	PM10	33.17	17.37	30	µg/m ³
January 2017						
Monitoring Point 2	28/1/17	PM10	32.54	17.24	30	µg/m ³
Monitoring Point 2	22/1/17	PM10	27.25	17.04	30	µg/m ³
Monitoring Point 2	16/1/17	PM10	51.24	16.91	30	µg/m ³
Monitoring Point 2	10/1/17	PM10	20.87	16.17	30	µg/m ³
Monitoring Point 2	4/1/17	PM10	12.44	16.43	30	µg/m ³
December 2016						
Monitoring Point 2	29/12/16	PM10	17.81	16.78	30	µg/m ³
Monitoring Point 2	23/12/16	PM10	34.22	17.22	30	µg/m ³
Monitoring Point 2	17/12/16	PM10	13.18	17.39	30	µg/m ³
Monitoring Point 2	11/12/16	PM10	27.27	18.22	30	µg/m ³
Monitoring Point 2	5/12/16	PM10	50.68	19.02	30	µg/m ³
November 2016						
Monitoring Point 2	29/11/16	PM10	24.14	20.78	30	µg/m ³
Monitoring Point 2	23/11/16	PM10	18.51	20.72	30	µg/m ³
Monitoring Point 2	17/11/16	PM10	23.2	22.08	30	µg/m ³
Monitoring Point 2	11/11/16	PM10	23.98	22.03	30	µg/m ³
Monitoring Point 2	5/11/16	PM10	16.36	22.22	30	µg/m ³
October 2016						
Monitoring Point 2	30/10/16	PM10	15.24	22.16	30	µg/m ³
Monitoring Point 2	24/10/16	PM10	9.09	22.72	30	µg/m ³
Monitoring Point 2	18/10/16	PM10	3.96	22.96	30	µg/m ³
Monitoring Point 2	12/10/16	PM10	2.23	23.25	30	µg/m ³
Monitoring Point 2	6/10/16	PM10	7.61	23.36	30	µg/m ³
September 2016						
Monitoring Point 2	30/9/16	PM10	3.34	23.6	30	µg/m ³
Monitoring Point 2	24/9/16	PM10	6.93	23.88	30	µg/m ³
Monitoring Point 2	18/9/16	PM10	12.76	23.94	30	µg/m ³
Monitoring Point 2	12/9/16	PM10	15.06	23.88	30	µg/m ³
Monitoring Point 2	6/9/16	PM10	22.52	23.8	30	µg/m ³
August 2016						
Monitoring Point 2	31/8/16	PM10	9.1	23.51	30	µg/m ³
Monitoring Point 2	25/8/16	PM10	4.46	23.46	30	µg/m ³
Monitoring Point 2	19/8/16	PM10	25.42	23.41	30	µg/m ³
Monitoring Point 2	13/8/16	PM10	7.38	23.33	30	µg/m ³
Monitoring Point 2	7/8/16	PM10	15.59	23.26	30	µg/m ³
Monitoring Point 2	1/8/16	PM10	1.83	23.12	30	µg/m ³

Peppertree Quarry Environmental Monitoring Report

Location	Date	Pollutant	Measurement	Rolling Annual Average	Limit annual average	Unit
July 2016						
Monitoring Point 2	26/7/16	PM10	2.78	23.11	30	µg/m ³
Monitoring Point 2	20/7/16	PM10	1.75	23.11	30	µg/m ³
Monitoring Point 2	14/7/16	PM10	3.41	23.15	30	µg/m ³
Monitoring Point 2	8/7/16	PM10	10.5	23.78	30	µg/m ³
Monitoring Point 2	2/7/16	PM10	4.61	26.11	30	µg/m ³
June 2016						
Monitoring Point 2	26/6/16	PM10	10.05	26.08	30	µg/m ³
Monitoring Point 2	20/6/16	PM10	1.86	26	30	µg/m ³
Monitoring Point 2	14/6/16	PM10	15.04	26.01	30	µg/m ³
Monitoring Point 2	8/6/16	PM10	1.01	26.08	30	µg/m ³
Monitoring Point 2	2/6/16	PM10	5.66	26.13	30	µg/m ³
May 2016						
Monitoring Point 2	27/5/16	PM10	2.28	26.11	30	µg/m ³
Monitoring Point 2	21/5/16	PM10	58.18	26.26	30	µg/m ³
Monitoring Point 2	15/5/16	PM10	9.68	25.35	30	µg/m ³
Monitoring Point 2	9/5/16	PM10	2.96	25.36	30	µg/m ³
Monitoring Point 2	3/5/16	PM10	6.69	25.38	30	µg/m ³
April 2016						
Monitoring Point 2	29/4/16	PM10	23.33	25.32	30	µg/m ³
Monitoring Point 2	21/4/16	PM10	16.16	24.99	30	µg/m ³
Monitoring Point 2	15/4/16	PM10	28.66	24.76	30	µg/m ³
Monitoring Point 2	9/4/16	PM10	29.43	24.57	30	µg/m ³
Monitoring Point 2	3/4/16	PM10	21.54	24.3	30	µg/m ³
March 2016						
Monitoring Point 2	28/3/16	PM10	16.95	24.1	30	µg/m ³
Monitoring Point 2	22/3/16	PM10	3.92	24.19	30	µg/m ³
Monitoring Point 2	16/3/16	PM10	10.48	24.45	30	µg/m ³
Monitoring Point 2	10/3/16	PM10	49.13	24.81	30	µg/m ³
Monitoring Point 2	4/3/16	PM10	34.41	24.55	30	µg/m ³
February 2016						
Monitoring Point 2	27/2/16	PM10	9.83	24.5	30	µg/m ³
Monitoring Point 2	21/2/16	PM10	16.97	24.61	30	µg/m ³
Monitoring Point 2	15/2/16	PM10	38.28	24.82	30	µg/m ³
Monitoring Point 2	9/2/16	PM10	34.7	24.29	30	µg/m ³
Monitoring Point 2	3/2/16	PM10	25.18	23.83	30	µg/m ³
January 2016						
Monitoring Point 2	28/1/16	PM10	19.94	23.87	30	µg/m ³
Monitoring Point 2	22/1/16	PM10	19.44	23.72	30	µg/m ³
Monitoring Point 2	16/1/16	PM10	6.13	23.4	30	µg/m ³
Monitoring Point 2	10/1/16	PM10	36.94	23.3	30	µg/m ³
Monitoring Point 2	4/1/16	PM10	33.85	22.69	30	µg/m ³
December 2015						
Monitoring Point 2	29/12/15	PM10	44.31	22.14	30	µg/m ³
Monitoring Point 2	23/12/15	PM10	44.76	21.41	30	µg/m ³
Monitoring Point 2	17/12/15	PM10	63.88	20.68	30	µg/m ³
Monitoring Point 2	11/12/15	PM10	76.01	19.63	30	µg/m ³
Monitoring Point 2	5/12/15	PM10	158.27	18.39	30	µg/m ³
November 2015						
Monitoring Point 2	29/11/15	PM10	20.35	15.79	30	µg/m ³

Peppertree Quarry Environmental Monitoring Report

Location	Date	Pollutant	Measurement	Rolling Annual Average	Limit annual average	Unit
Monitoring Point 2	23/11/15	PM10	101.65	15.46	30	µg/m ³
Monitoring Point 2	17/11/15	PM10	20.00	13.79	30	µg/m ³
Monitoring Point 2	11/11/15	PM10	35.78	13.46	30	µg/m ³
Monitoring Point 2	5/11/15	PM10	12.33	13.22	30	µg/m ³
October 2015						
Monitoring Point 2	30/10/15	PM10	49.62	13.85	30	µg/m ³
Monitoring Point 2	24/10/15	PM10	23.79	13.21	30	µg/m ³
Monitoring Point 2	18/10/15	PM10	21.32	13.34	30	µg/m ³
Monitoring Point 2	12/10/15	PM10	8.98	13.2	30	µg/m ³
Monitoring Point 2	6/10/15	PM10	22.53	13.36	30	µg/m ³
September 2015						
Monitoring Point 2	30/9/15	PM10	20.47	13.11	30	µg/m ³
Monitoring Point 2	24/9/15	PM10	10.68	13.2	30	µg/m ³
Monitoring Point 2	18/9/15	PM10	8.89	13.34	30	µg/m ³
Monitoring Point 2	12/9/15	PM10	10.08	13.26	30	µg/m ³
Monitoring Point 2	6/9/15	PM10	4.76	13.27	30	µg/m ³
August 2015						
Monitoring Point 2	31/8/15	PM10	6.39	13.25	30	µg/m ³
Monitoring Point 2	25/8/15	PM10	1.37	13.33	30	µg/m ³
Monitoring Point 2	19/8/15	PM10	20.65	13.55	30	µg/m ³
Monitoring Point 2	13/8/15	PM10	3.02	13.4	30	µg/m ³
Monitoring Point 2	7/8/15	PM10	6.84	14.07	30	µg/m ³
Monitoring Point 2	1/8/15	PM10	1.38	14.23	30	µg/m ³
July 2015						
Monitoring Point 2	26/7/15	PM10	2.4	14.42	30	µg/m ³
Monitoring Point 2	20/7/15	PM10	4.4	14.61	30	µg/m ³
Monitoring Point 2	14/7/15	PM10	42.03	14.79	30	µg/m ³
Monitoring Point 2	8/7/15	PM10	152.41	14.1	30	µg/m ³
Monitoring Point 2	2/7/15	PM10	3.02	11.68	30	µg/m ³
June 2015						
Monitoring Point 2	26/6/15	PM10	4.98	11.72	30	µg/m ³
Monitoring Point 2	20/6/15	PM10	2.35	11.7	30	µg/m ³
Monitoring Point 2	14/6/15	PM10	19.19	11.7	30	µg/m ³
Monitoring Point 2	8/6/15	PM10	4.51	11.53	30	µg/m ³
Monitoring Point 2	2/6/15	PM10	4.38	11.65	30	µg/m ³
May 2015						
Monitoring Point 2	27/5/15	PM10	11.42	11.72	30	µg/m ³
Monitoring Point 2	21/5/15	PM10	2.7	11.53	30	µg/m ³
Monitoring Point 2	15/5/15	PM10	10.05	11.49	30	µg/m ³
Monitoring Point 2	9/5/15	PM10	4.5	11.58	30	µg/m ³
Monitoring Point 2	3/5/15	PM10	2.54	11.87	30	µg/m ³
April 2015						
Monitoring Point 2	27/4/15	PM10	3.18	12.17	30	µg/m ³
Monitoring Point 2	21/4/15	PM10	2.34	12.57	30	µg/m ³
Monitoring Point 2	15/4/15	PM10	17.38	12.89	30	µg/m ³
Monitoring Point 2	9/4/15	PM10	12.84	13.3	30	µg/m ³
Monitoring Point 2	3/4/15	PM10	8.94	13.42	30	µg/m ³
March 2015						
Monitoring Point 2	28/3/15	PM10	22.57	13.98	30	µg/m ³
Monitoring Point 2	22/3/15	PM10	20.06	13.8	30	µg/m ³

Peppertree Quarry Environmental Monitoring Report

Location	Date	Pollutant	Measurement	Rolling Annual Average	Limit annual average	Unit
Monitoring Point 2	16/3/15	PM10	32.41	13.81	30	µg/m ³
Monitoring Point 2	10/3/15	PM10	33.22	13.53	30	µg/m ³
Monitoring Point 2	4/3/15	PM10	31.49	13.24	30	µg/m ³
February 2015						
Monitoring Point 2	26/2/15	PM10	16.44	13.05	30	µg/m ³
Monitoring Point 2	20/2/15	PM10	29.64	13.2	30	µg/m ³
Monitoring Point 2	14/2/15	PM10	5.88	13.04	30	µg/m ³
Monitoring Point 2	8/2/15	PM10	6.92	13.55	30	µg/m ³
Monitoring Point 2	2/2/15	PM10	27.6	14.21	30	µg/m ³
January 2015						
Monitoring Point 2	27/1/15	PM10	10.62	14.45	30	µg/m ³
Monitoring Point 2	21/1/15	PM10	0	14.42	30	µg/m ³
Monitoring Point 2	15/1/15	PM10	0	14.66	30	µg/m ³
Monitoring Point 2	9/1/15	PM10	0	15.14	30	µg/m ³
Monitoring Point 2	3/1/15	PM10	0	15.42	30	µg/m ³

Peppertree Quarry Environmental Monitoring Report

1.3 TSP

TSP ($\mu\text{g}/\text{m}^3$) results for the month of JUne 2018

Sample Period: June 2018
Date Received: 10/7/18
Licensee: Peppertree Quarry
Licensee
Address: 843 Marulan south Road, Marulan NSW 2579
EPL No: 13088

Qualifications related to Dust:

* Air Emissions Monitoring - High Volume Air Sampler
Sampling Frequency is collection of samples over a 24hr period, every 6 days. Protocols are contained in the Air Quality Management Plan found on this website.

Results						
Location	Date	Pollutant	Measurement	Rolling Annual Average	Limit	Unit
Monitoring Point 1	4/7/18	TSP	42.6	49.31	90	$\mu\text{g}/\text{m}^3$
Monitoring Point 1	28/6/18	TSP	36.88	49.19	90	$\mu\text{g}/\text{m}^3$
Monitoring Point 1	22/6/18	TSP	12.52	49.96	90	$\mu\text{g}/\text{m}^3$
Monitoring Point 1	16/6/18	TSP	0.77	50.09	90	$\mu\text{g}/\text{m}^3$

Move data to historical table and update

The TSP data indicates that during the sampling period the data range was between 0.77 $\mu\text{g}/\text{m}^3$ and 42.6 $\mu\text{g}/\text{m}^3$. The rolling annual average data range was between 49.19 $\mu\text{g}/\text{m}^3$ and 50.09 $\mu\text{g}/\text{m}^3$, well below the long term criteria.

Peppertree Quarry Environmental Monitoring Report

Historical Results						
Location	Date	Pollutant	Measurement	Rolling Annual Average	Limit annual average	Unit
May 2018						
Monitoring Point 1	10/6/18	TSP	1.77	50.59	90	µg/m ³
Monitoring Point 1	4/6/18	TSP	56.8	50.6	90	µg/m ³
Monitoring Point 1	29/5/18	TSP	111.63	50.62	90	µg/m ³
Monitoring Point 1	23/5/18	TSP	68.46	48.95	90	µg/m ³
Monitoring Point 1	17/5/18	TSP	17.58	48.32	90	µg/m ³
Monitoring Point 1	11/5/18	TSP	2.87	48.39	90	µg/m ³
April 2018						
Monitoring Point 1	30/4/18	TSP	24.89	51.57	90	µg/m ³
Monitoring Point 1	23/4/18	TSP	121.08	51.42	90	µg/m ³
Monitoring Point 1	17/4/18	TSP	144.84	50.33	90	µg/m ³
Monitoring Point 1	11/4/18	TSP	79.1	48.04	90	µg/m ³
Monitoring Point 1	5/4/18	TSP	126.5	46.93	90	µg/m ³
March 2018						
Monitoring Point 1	30/03/18	TSP	50.30	44.91	90	µg/m ³
Monitoring Point 1	24/3/18	TSP	61.09	44.72	90	µg/m ³
Monitoring Point 1	21/3/18	TSP	11.68	43.79	90	µg/m ³
Monitoring Point 1	12/3/18	TSP	112.18	43.77	90	µg/m ³
Monitoring Point 1	6/3/18	TSP	80.22	43.5	90	µg/m ³
February 2018						
Monitoring Point 1	28/2/18	TSP	32.38	42.97	90	µg/m ³
Monitoring Point 1	22/2/18	TSP	84.95	43.46	90	µg/m ³
Monitoring Point 1	19/2/18	TSP	89.4	44.2	90	µg/m ³
Monitoring Point 1	10/2/18	TSP	62.9	44.92	90	µg/m ³
Monitoring Point 1	4/2/18	TSP	54.57	44.96	90	µg/m ³
January 2018						
Monitoring Point 1	29/1/18	TSP	80.56	45.5	90	µg/m ³
Monitoring Point 1	23/1/18	TSP	172.05	45.16	90	µg/m ³
Monitoring Point 1	17/1/18	TSP	105.41	43.20	90	µg/m ³
Monitoring Point 1	11/1/18	TSP	67.29	42.98	90	µg/m ³
Monitoring Point 1	5/1/18	TSP	61.79	42.35	90	µg/m ³
December 2017						
Monitoring Point 1	30/12/17	TSP	37.34	41.89	90	µg/m ³
Monitoring Point 1	24/12/17	TSP	33.99	41.77	90	µg/m ³
Monitoring Point 1	18/12/17	TSP	70.11	42.26	90	µg/m ³
Monitoring Point 1	12/12/17	TSP	73.51	41.52	90	µg/m ³
Monitoring Point 1	6/12/17	TSP	7.08	41.52	90	µg/m ³
November 2017						
Monitoring Point 1	30/11/17	TSP	106.44	43.11	90	µg/m ³
Monitoring Point 1	24/11/17	TSP	51.84	42.53	90	µg/m ³
Monitoring Point 1	18/11/17	TSP	38.92	42.46	90	µg/m ³
Monitoring Point 1	12/11/18	TSP	54.43	42.71	90	µg/m ³
Monitoring Point 1	6/11/18	TSP	15	42.7	90	µg/m ³
October 2017						
Monitoring Point 1	31/10/17	TSP	21.95	43.04	90	µg/m ³
Monitoring Point 1	25/10/17	TSP	56.58	43.16	90	µg/m ³
Monitoring Point 1	19/10/17	TSP	46.25	42.53	90	µg/m ³
Monitoring Point 1	13/10/17	TSP	36.61	41.97	90	µg/m ³

Peppertree Quarry Environmental Monitoring Report

Location	Date	TSP	Measurement	Rolling Annual Average	Limit annual average	Unit
Monitoring Point 1	7/10/17	TSP	44.45	41.55	90	µg/m ³
Monitoring Point 1	1/10/17	TSP	44.27	41.07	90	µg/m ³
September 2017						
Monitoring Point 1	25/9/17	TSP	27.29	40.54	90	µg/m ³
Monitoring Point 1	19/9/17	TSP	16.49	40.4	90	µg/m ³
Monitoring Point 1	13/9/17	TSP	26.54	40.83	90	µg/m ³
Monitoring Point 1	6/9/17	TSP	2.01	41.14	90	µg/m ³
Monitoring Point 1	1/9/17	TSP	46.01	41.52	90	µg/m ³
August 2017						
Monitoring Point 1	26/8/17	TSP	21.1	40.95	90	µg/m ³
Monitoring Point 1	20/8/17	TSP	50.93	40.78	90	µg/m ³
Monitoring Point 1	14/8/17	TSP	18.5	41	90	µg/m ³
Monitoring Point 1	8/8/17	TSP	2.65	40.87	90	µg/m ³
Monitoring Point 1	2/8/17	TSP	20.08	41.51	90	µg/m ³
July 2017						
Monitoring Point 1	27/7/17	TSP	21.95	41.26	90	µg/m ³
Monitoring Point 1	21/7/17	TSP	29.23	40.98	90	µg/m ³
Monitoring Point 1	15/7/17	TSP	4	40.63	90	µg/m ³
Monitoring Point 1	9/7/17	TSP	1.96	40.58	90	µg/m ³
Monitoring Point 1	3/7/17	TSP	35.64	40.70	90	µg/m ³
June 2017						
Monitoring Point 1	27/6/17	TSP	83.61	40.22	90	µg/m ³
Monitoring Point 1	21/6/17	TSP	20.64	39.07	90	µg/m ³
Monitoring Point 1	15/6/17	TSP	30.78	38.79	90	µg/m ³
Monitoring Point 1	9/6/17	TSP	2.79	38.72	90	µg/m ³
Monitoring Point 1	3/6/17	TSP	57.96	38.7	90	µg/m ³
May 2017						
Monitoring Point 1	28/5/17	TSP	9.59	37.85	90	µg/m ³
Monitoring Point 1	22/5/17	TSP	30.22	37.81	90	µg/m ³
Monitoring Point 1	16/5/17	TSP	21.84	39.21	90	µg/m ³
Monitoring Point 1	10/5/17	TSP	138.25	39.13	90	µg/m ³
Monitoring Point 1	4/5/17	TSP	63.66	37.03	90	µg/m ³
April 2017						
Monitoring Point 1	28/4/17	TSP	15.58	36.22	90	µg/m ³
Monitoring Point 1	22/4/17	TSP	54.52	36.9	90	µg/m ³
Monitoring Point 1	16/4/17	TSP	5.18	36.72	90	µg/m ³
Monitoring Point 1	10/4/17	TSP	11.65	37.81	90	µg/m ³
Monitoring Point 1	4/4/17	TSP	3.21	38.88	90	µg/m ³
March 2017						
Monitoring Point 1	29/3/17	TSP	38.89	39.72	90	µg/m ³
Monitoring Point 1	23/3/17	TSP	3.96	40.26	90	µg/m ³
Monitoring Point 1	17/3/17	TSP	10.7	40.73	90	µg/m ³
Monitoring Point 1	11/3/17	TSP	95.51	41.04	90	µg/m ³
Monitoring Point 1	5/3/17	TSP	48.22	41.37	90	µg/m ³
February 2017						
Monitoring Point 1	27/2/17	TSP	62.22	41.97	90	µg/m ³
Monitoring Point 1	21/2/17	TSP	129.86	41.5	90	µg/m ³
Monitoring Point 1	15/2/17	TSP	133.48	40.19	90	µg/m ³
Monitoring Point 1	9/2/17	TSP	65.23	39.26	90	µg/m ³
Monitoring Point 1	3/2/17	TSP	87.53	39.72	90	µg/m ³

Peppertree Quarry Environmental Monitoring Report

Location	Date	TSP	Measurement	Rolling Annual Average	Limit annual average	Unit
January 2017						
Monitoring Point 1	28/1/17	TSP	59.99	39.26	90	µg/m ³
Monitoring Point 1	22/1/17	TSP	52.3	39.11	90	µg/m ³
Monitoring Point 1	16/1/17	TSP	91.92	39	90	µg/m ³
Monitoring Point 1	10/1/17	TSP	29.07	37.82	90	µg/m ³
Monitoring Point 1	4/1/17	TSP	33.78	38.6	90	µg/m ³
December 2016						
Monitoring Point 1	29/12/16	TSP	29.63	38.79	90	µg/m ³
Monitoring Point 1	23/12/16	TSP	64.25	39.85	90	µg/m ³
Monitoring Point 1	17/12/16	TSP	24.69	40.58	90	µg/m ³
Monitoring Point 1	11/12/16	TSP	73.5	42.34	90	µg/m ³
Monitoring Point 1	5/12/16	TSP	104.36	43.1	90	µg/m ³
November 2016						
Monitoring Point 1	29/11/16	TSP	71.14	42.61	90	µg/m ³
Monitoring Point 1	23/11/16	TSP	47.44	42.23	90	µg/m ³
Monitoring Point 1	17/11/16	TSP	54.04	43.37	90	µg/m ³
Monitoring Point 1	11/11/16	TSP	53.96	43.31	90	µg/m ³
Monitoring Point 1	5/11/16	TSP	35.42	44.4	90	µg/m ³
October 2016						
Monitoring Point 1	30/10/16	TSP	29.77	44.46	90	µg/m ³
Monitoring Point 1	24/10/16	TSP	18.07	45.98	90	µg/m ³
Monitoring Point 1	18/10/16	TSP	11.73	46.78	90	µg/m ³
Monitoring Point 1	12/10/16	TSP	11.08	47.36	90	µg/m ³
Monitoring Point 1	6/10/16	TSP	15.33	47.63	90	µg/m ³
September 2016						
Monitoring Point 1	30/9/16	TSP	12.16	48.12	90	µg/m ³
Monitoring Point 1	24/9/16	TSP	18.25	48.89	90	µg/m ³
Monitoring Point 1	18/9/16	TSP	43.14	49.18	90	µg/m ³
Monitoring Point 1	12/9/16	TSP	45.55	48.85	90	µg/m ³
Monitoring Point 1	6/9/16	TSP	24.82	48.48	90	µg/m ³
August 2016						
Monitoring Point 1	31/8/16	TSP	11.29	48.45	90	µg/m ³
Monitoring Point 1	25/8/16	TSP	9.81	48.48	90	µg/m ³
Monitoring Point 1	19/8/16	TSP	65.49	48.37	90	µg/m ³
Monitoring Point 1	13/8/16	TSP	10.2	48.26	90	µg/m ³
Monitoring Point 1	7/8/16	TSP	42.03	48.17	90	µg/m ³
Monitoring Point 1	1/8/16	TSP	4.88	47.56	90	µg/m ³
July 2016						
Monitoring Point 1	26/7/16	TSP	4.53	47.67	90	µg/m ³
Monitoring Point 1	20/7/16	TSP	8.15	47.72	90	µg/m ³
Monitoring Point 1	14/7/16	TSP	0.93	47.81	90	µg/m ³
Monitoring Point 1	8/7/16	TSP	9.31	48.04	90	µg/m ³
Monitoring Point 1	2/7/16	TSP	6.2	49.93	90	µg/m ³
June 2016						
Monitoring Point 1	26/6/16	TSP	13.55	49.91	90	µg/m ³
Monitoring Point 1	20/6/16	TSP	3.38	50.13	90	µg/m ³
Monitoring Point 1	14/6/16	TSP	26.58	50.15	90	µg/m ³
Monitoring Point 1	8/6/16	TSP	1.39	52.44	90	µg/m ³
Monitoring Point 1	2/6/16	TSP	6.46	52.54	90	µg/m ³
May 2016						

Peppertree Quarry Environmental Monitoring Report

Location	Date	TSP	Measurement	Rolling Annual Average	Limit annual average	Unit
Monitoring Point 1	27/5/16	TSP	6.76	52.58	90	µg/m ³
Monitoring Point 1	21/5/16	TSP	115.99	52.76	90	µg/m ³
Monitoring Point 1	15/5/16	TSP	17.01	51.01	90	µg/m ³
Monitoring Point 1	9/5/16	TSP	10.38	51.12	90	µg/m ³
Monitoring Point 1	3/5/16	TSP	13.9	51.23	90	µg/m ³
April 2016						
Monitoring Point 1	29/4/16	TSP	57.1	51.14	90	µg/m ³
Monitoring Point 1	21/4/16	TSP	43.81	50.31	90	µg/m ³
Monitoring Point 1	15/4/16	TSP	71.37	49.66	90	µg/m ³
Monitoring Point 1	9/4/16	TSP	77.16	49.04	90	µg/m ³
Monitoring Point 1	3/4/16	TSP	54.12	48.25	90	µg/m ³
March 2016						
Monitoring Point 1	28/3/16	TSP	72.1	47.8	90	µg/m ³
Monitoring Point 1	22/3/16	TSP	32.4	47.63	90	µg/m ³
Monitoring Point 1	16/3/16	TSP	29.6	47.93	90	µg/m ³
Monitoring Point 1	10/3/16	TSP	115.53	48.65	90	µg/m ³
Monitoring Point 1	4/3/16	TSP	85.2	47.98	90	µg/m ³
February 2016						
Monitoring Point 1	27/2/16	TSP	33.44	47.76	90	µg/m ³
Monitoring Point 1	21/2/16	TSP	50.04	47.81	90	µg/m ³
Monitoring Point 1	15/2/16	TSP	76.75	47.99	90	µg/m ³
Monitoring Point 1	9/2/16	TSP	93.03	47.81	90	µg/m ³
Monitoring Point 1	3/2/16	TSP	59.44	47.38	90	µg/m ³
January 2016						
Monitoring Point 1	28/1/16	TSP	51.24	47.07	90	µg/m ³
Monitoring Point 1	22/1/16	TSP	45.26	46.55	90	µg/m ³
Monitoring Point 1	16/1/16	TSP	19.87	46.56	90	µg/m ³
Monitoring Point 1	10/1/16	TSP	76.68	46.96	90	µg/m ³
Monitoring Point 1	4/1/16	TSP	45.33	46.38	90	µg/m ³
December 2015						
Monitoring Point 1	29/12/15	TSP	94.46	46.6	90	µg/m ³
Monitoring Point 1	23/12/15	TSP	108.57	45.39	90	µg/m ³
Monitoring Point 1	17/12/15	TSP	132.01	44.45	90	µg/m ³
Monitoring Point 1	11/12/15	TSP	120.32	43.99	90	µg/m ³
Monitoring Point 1	5/12/15	TSP	74.44	42.24	90	µg/m ³
November 2015						
Monitoring Point 1	29/11/15	TSP	47.73	41.41	90	µg/m ³
Monitoring Point 1	23/11/15	TSP	122.91	41.45	90	µg/m ³
Monitoring Point 1	17/11/15	TSP	44.6	40.46	90	µg/m ³
Monitoring Point 1	11/11/15	TSP	120.58	40.15	90	µg/m ³
Monitoring Point 1	5/11/15	TSP	38.57	39.32	90	µg/m ³
October 2015						
Monitoring Point 1	30/10/15	TSP	122.73	40.48	90	µg/m ³
Monitoring Point 1	24/10/15	TSP	67.06	38.89	90	µg/m ³
Monitoring Point 1	18/10/15	TSP	47.17	38.85	90	µg/m ³
Monitoring Point 1	12/10/15	TSP	27.05	38.69	90	µg/m ³
Monitoring Point 1	6/10/15	TSP	45.75	38.74	90	µg/m ³
September 2015						
Monitoring Point 1	30/9/15	TSP	58.64	38.4	90	µg/m ³

Peppertree Quarry Environmental Monitoring Report

Location	Date	TSP	Measurement	Rolling Annual Average	Limit annual average	Unit
Monitoring Point 1	24/9/15	TSP	36.25	38.31	90	µg/m ³
Monitoring Point 1	18/9/15	TSP	22.87	38.63	90	µg/m ³
Monitoring Point 1	12/9/15	TSP	22.99	38.39	90	µg/m ³
Monitoring Point 1	6/9/15	TSP	23.05	38.29	90	µg/m ³
August 2015						
Monitoring Point 1	31/8/15	TSP	13.26	38.1	90	µg/m ³
Monitoring Point 1	25/8/15	TSP	3.02	38.51	90	µg/m ³
Monitoring Point 1	19/8/15	TSP	58.67	38.89	90	µg/m ³
Monitoring Point 1	13/8/15	TSP	4.73	38.27	90	µg/m ³
Monitoring Point 1	7/8/15	TSP	4.98	39.36	90	µg/m ³
Monitoring Point 1	1/8/15	TSP	11.69	39.69	90	µg/m ³
July 2015						
Monitoring Point 1	26/7/15	TSP	7.24	39.97	90	µg/m ³
Monitoring Point 1	20/7/15	TSP	13.48	40.23	90	µg/m ³
Monitoring Point 1	14/7/15	TSP	15.47	40.63	90	µg/m ³
Monitoring Point 1	8/7/15	TSP	124.63	40.68	90	µg/m ³
Monitoring Point 2	2/7/15	TSP	4.89	38.66	90	µg/m ³
June 2015						
Monitoring Point 1	26/6/15	TSP	26.76	38.66	90	µg/m ³
Monitoring Point 1	20/6/15	TSP	4.57	38.34	90	µg/m ³
Monitoring Point 1	14/6/15	TSP	166.17	38.37	90	µg/m ³
Monitoring Point 1	8/6/15	TSP	7.93	35.95	90	µg/m ³
Monitoring Point 1	2/6/15	TSP	8.88	36.13	90	µg/m ³
May 2015						
Monitoring Point 1	27/5/15	TSP	17.38	36.18	90	µg/m ³
Monitoring Point 1	21/5/15	TSP	9.13	36.65	90	µg/m ³
Monitoring Point 1	15/5/15	TSP	23.73	36.96	90	µg/m ³
Monitoring Point 1	9/5/15	TSP	17.29	37.01	90	µg/m ³
Monitoring Point 1	3/5/15	TSP	8.63	37.65	90	µg/m ³
April 2015						
Monitoring Point 1	27/4/15	TSP	6.27	38.05	90	µg/m ³
Monitoring Point 1	21/4/15	TSP	4.23	38.92	90	µg/m ³
Monitoring Point 1	15/4/15	TSP	33.39	39.42	90	µg/m ³
Monitoring Point 1	9/4/15	TSP	29.35	39.62	90	µg/m ³
Monitoring Point 1	3/4/15	TSP	26.25	39.79	90	µg/m ³
March 2015						
Monitoring Point 1	28/3/15	TSP	61.75	39.79	90	µg/m ³
Monitoring Point 1	22/3/15	TSP	50.67	39.05	90	µg/m ³
Monitoring Point 1	16/3/15	TSP	73.64	38.86	90	µg/m ³
Monitoring Point 1	10/3/15	TSP	74.9	38.1	90	µg/m ³
Monitoring Point 1	4/3/15	TSP	71.58	37.56	90	µg/m ³
February 2015						
Monitoring Point 1	26/2/15	TSP	36.44	37.08	90	µg/m ³
Monitoring Point 1	20/2/15	TSP	61.3	37.19	90	µg/m ³
Monitoring Point 1	14/2/15	TSP	65.34	36.79	90	µg/m ³
Monitoring Point 1	8/2/15	TSP	66.82	37.15	90	µg/m ³
Monitoring Point 1	2/2/15	TSP	40.95	37.9	90	µg/m ³
January 2015						
Monitoring Point 1	27/1/15	TSP	18.98	38.99	90	µg/m ³
Monitoring Point 1	21/1/15	TSP	45.9	39.19	90	µg/m ³

Peppertree Quarry Environmental Monitoring Report

Location	Date	TSP	Measurement	Rolling Annual Average	Limit annual average	Unit
Monitoring Point 1	15/1/15	TSP	44.78	39.54	90	$\mu\text{g}/\text{m}^3$
Monitoring Point 1	9/1/15	TSP	41.31	39.97	90	$\mu\text{g}/\text{m}^3$
Monitoring Point 1	3/1/15	TSP	58.28	40.27	90	$\mu\text{g}/\text{m}^3$

2. Blasting

Blast monitoring is conducted as per condition L7 of EPL 13088. The blasting monitoring results for the month of May 2018 are summarised below.

Sample Period: June 2018
 Licensee: Peppertree Quarry
 Licensee Address: 843 Marulan south road, Marulan NSW 2579
 EPL No: 13088

Qualifications related to noise:

- * The overpressure level from blasting operations at the premises must not exceed 120dB (Lin Peak) at any time
 - * The overpressure level from blasting operations at the premises must not exceed 115dB (Lin Peak) for more than 5% of the total number of blasts over each reporting period
 - * Ground vibration peak particle vector from the blasting operations at the premises must not exceed 10mm/sec at any time
 - * Ground vibration peak particle vector from the blasting operations at the premises must not exceed 5mm/sec for more than 5% of the total number of blasts over each reporting period
 - * Blast monitoring overpressure and ground vibration is measured at the 4 locations. – North west, north east, Pace and managers residence
- Measurements are online and can be obtained within 15minutes of the blast however blast reports with the data are submitted with 48 hours of each blast

Results					
Location	Blast Date	Ground Vibration Result	GV Compliant	Overpressure Result	OP Compliant
North West Boundary	26 th July 2018	no trigger	YES	0.73	YES
North East Boundary	26 th July 2018	no trigger	YES	no trigger	YES
683 Marulan South Road	26 th July 2018	no trigger	YES	no trigger	YES
Residence	26 th July 2018	102.5	YES	1.13	YES
North West Boundary	20 th July 2018	no trigger	YES	no trigger	YES
North East Boundary	20 th July 2018	no trigger	YES	no trigger	YES
683 Marulan South Road	20 th July 2018	no trigger	YES	no trigger	YES
Residence	20 th July 2018	no data	YES	no data	YES
North West Boundary	12 th July 2018	104.9	YES	0.94	YES
North East Boundary	12 th July 2018	no trigger	YES	no trigger	YES
683 Marulan South Road	12 th July 2018	no trigger	YES	no trigger	YES
Residence	12 th July 2018	105	YES	0.82	YES
North West Boundary	5 th July 2018	110.1	YES	1.14	YES
North East Boundary	5 th July 2018	no trigger	YES	no trigger	YES
683 Marulan South Road	5 th July 2018	no trigger	YES	no trigger	YES
Residence	5 th July 2018	106.9	YES	0.65	YES
North West Boundary	28th June 2018	105.4	YES	0.98	YES
North East Boundary	28th June 2018	no trigger	YES	no trigger	YES
683 Marulan South Road	28th June 2018	100.9	YES	0.21	YES
Residence	28th June 2018	103.2	YES	1.64	YES

Peppertree Quarry Environmental Monitoring Report

Location	Blast Date	Ground Vibration Result	GV Compliant	Overpressure Result	OP Compliant
North West Boundary	22 nd June 2018	107.3	YES	0.88	YES
North East Boundary	22 nd June 2018	no trigger	YES	no trigger	YES
683 Marulan South Road	22 nd June 2018	101.7	YES	0.15	YES
Residence	22 nd June 2018	no trigger	YES	no trigger	YES

The blast data indicates that results are below the trigger levels for both Ground Vibration and Overpressure for all blasts conducted in June 2018.

Peppertree Quarry Environmental Monitoring Report

Historical results					
Location	Blast Date	Ground Vibration Result	GV Compliant	Overpressure Result	OP Compliant
North West Boundary	14 th June 2018	1.53	YES	110	YES
North East Boundary	14 th June 2018	no trigger	YES	no trigger	YES
683 Marulan South Road	14 th June 2018	0.14	YES	100.5	YES
Residence	14 th June 2018	no trigger	YES	no trigger	YES
North West Boundary	6 th June 2018	1.32	YES	108.8	YES
North East Boundary	6 th June 2018	no trigger	YES	no trigger	YES
683 Marulan South Road	6 th June 2018	0.21	YES	99.7	YES
Residence	6 th June 2018	no trigger	YES	no trigger	YES
North West Boundary	31st May 2018	0.9	YES	108.1	YES
North East Boundary	31st May 2018	no trigger	YES	no trigger	YES
683 Marulan South Road	31st May 2018	0.14	YES	99.6	YES
Residence	31st May 2018	no trigger	YES	no trigger	YES
North West Boundary	24 th May 2018	0.49	YES	104.9	YES
North East Boundary	24 th May 2018	no trigger	YES	no trigger	YES
683 Marulan South Road	24 th May 2018	no trigger	YES	no trigger	YES
Residence	24 th May 2018	0.63	YES	102.5	YES
North West Boundary	17 th May 2018	0.73	YES	105.9	YES
North East Boundary	17 th May 2018	no trigger	YES	no trigger	YES
683 Marulan South Road	17 th May 2018	0.11	YES	100.9	YES
Residence	17 th May 2018	0.79	YES	106.7	YES
North West Boundary	10 May 2018	no trigger	YES	no trigger	YES
North East Boundary	10 May 2018	no trigger	YES	no trigger	YES
683 Marulan South Road	10 May 2018	no trigger	YES	no trigger	YES
Residence	10 May 2018	0.04	YES	112.1	YES
North West Boundary	3 May 2018	no trigger	YES	no trigger	YES
North East Boundary	3 May 2018	no trigger	YES	no trigger	YES
683 Marulan South Road	3 May 2018	no trigger	YES	no trigger	YES
Residence	3 May 2018	0.63	YES	103.6	YES
North West Boundary	19 April 2018	0.95	YES	108.9	YES
North East Boundary	19 April 2018	no trigger	YES	no trigger	YES
683 Marulan South Road	19 April 2018	0.12	YES	100.8	YES
Residence	19 April 2018	no trigger	YES	no trigger	YES
North West Boundary	12 April 2018	no data available	YES	no data available	YES
North East Boundary	12 April 2018	no data available	YES	no data available	YES
683 Marulan South Road	12 April 2018	no data available	YES	no data available	YES
Residence	12 April 2018	no data available	YES	no data available	YES
North West Boundary	22 nd March 2018	1.05	YES	110	YES
North East Boundary	22 nd March 2018	no trigger	YES	no trigger	YES
683 Marulan South Road	22 nd March 2018	0.14	YES	108.2	YES
Residence	22 nd March 2018	0.98	YES	114.9	YES

Peppertree Quarry Environmental Monitoring Report

Location	Blast Date	Ground Vibration Result	GV Compliant	Overpressure Result	OP Compliant
North West Boundary	15 march 2018	1.1	YES	99.3	YES
North East Boundary	15 march 2018	no trigger	YES	no trigger	YES
683 Marulan South Road	15 march 2018	0.1	YES	99.2	YES
Residence	15 march 2018	1.45	YES	98.5	YES
North West Boundary	12 march 2018	1.9	YES	108.4	YES
North East Boundary	12 march 2018	no trigger	YES	no trigger	YES
683 Marulan South Road	12 march 2018	0.17	YES	100.3	YES
Residence	12 march 2018	1.2	YES	103.2	YES
North West Boundary	1 st March 2018	1.3	YES	106.4	YES
North East Boundary	1 st March 2018	no trigger	YES	no trigger	YES
683 Marulan South Road	1 st March 2018	no trigger	YES	no trigger	YES
Residence	1 st March 2018	1.6	YES	105	YES
North West Boundary	20 February 2018	1.2	YES	110.5	YES
North East Boundary	20 February 2018	no trigger	YES	no trigger	YES
683 Marulan South Road	20 February 2018	0.1	YES	102.4	YES
Residence	20 February 2018	1.75	YES	109.9	YES
North West Boundary	16 February 2018	4.1	YES	109.1	YES
North East Boundary	16 February 2018	no trigger	YES	no trigger	YES
683 Marulan South Road	16 February 2018	0.17	YES	106.4	YES
Residence	16 February 2018	1.3	YES	110.5	YES
North West Boundary	8 February 2018	no trigger	YES	no trigger	YES
North East Boundary	8 February 2018	no trigger	YES	no trigger	YES
683 Marulan South Road	8 February 2018	no trigger	YES	no trigger	YES
Residence	8 February 2018	no trigger	YES	no trigger	YES
North West Boundary	1 February 2018	1.1	YES	103.8	YES
North East Boundary	1 February 2018	no trigger	YES	no trigger	YES
683 Marulan South Road	1 February 2018	no trigger	YES	no trigger	YES
Residence	1 February 2018	0.65	YES	103.5	YES
North West Boundary	25 January 2018	no trigger	YES	no trigger	YES
North East Boundary	25 January 2018	no trigger	YES	no trigger	YES
683 Marulan South Road	25 January 2018	no trigger	YES	no trigger	YES
Residence	25 January 2018	0.6	YES	111.9	YES
North West Boundary	11 January 2018	0.85	YES	98.4	YES
North East Boundary	11 January 2018	no trigger	YES	no trigger	YES
683 Marulan South Road	11 January 2018	0.13	YES	100	YES
Residence	11 January 2018	1.35	YES	99.5	YES
North West Boundary	21 December 2017	0.95	YES	108.9	YES
North East Boundary	21 December 2017	no trigger	YES	no trigger	YES
683 Marulan South Road	21 December 2017	0.09	YES	101.2	YES
Residence	21 December 2017	0.8	YES	108.3	YES

Peppertree Quarry Environmental Monitoring Report

Location	Blast Date	Ground Vibration Result	GV Compliant	Overpressure Result	OP Compliant
North West Boundary	14 December 2017	no trigger	YES		YES
North East Boundary	14 December 2017	no trigger	YES	no trigger	YES
683 Marulan South Road	14 December 2017	no trigger	YES	no trigger	YES
Residence	14 December 2017	no trigger	YES		YES
North West Boundary	8 December 2017	1.15	YES	102	YES
North East Boundary	8 December 2017	no trigger	YES	no trigger	YES
683 Marulan South Road	8 December 2017	no trigger	YES	no trigger	YES
Residence	8 December 2017	0.85	YES	106.2	YES
North West Boundary	4 December 2017	1.16	YES		YES
North East Boundary	4 December 2017	no trigger	YES	no trigger	YES
683 Marulan South Road	4 December 2017	no trigger	YES	no trigger	YES
Residence	4 December 2017	1.65	YES		YES
North West Boundary	16 November 2017	0.65	YES	105.7	YES
North East Boundary	16 November 2017	no trigger	YES	no trigger	YES
683 Marulan South Road	16 November 2017	0.1	YES	no trigger	YES
Residence	16 November 2017	0.7	YES	106.5	YES
North West Boundary	13 November 2017	0.8	YES	105.8	YES
North East Boundary	13 November 2017	no trigger	YES	no trigger	YES
683 Marulan South Road	13 November 2017	no trigger	YES	no trigger	YES
Residence	13 November 2017	0.7	YES	107.1	YES
North West Boundary	2 November 2017	0.75	YES	100.3	YES
North East Boundary	2 November 2017	no trigger	YES	no trigger	YES
683 Marulan South Road	2 November 2017	0.11	YES	no trigger	YES
Residence	2 November 2017	0.8	YES	100.2	YES
North West Boundary	24 October 2017	0.5	YES	101	YES
North East Boundary	24 October 2017	no trigger	YES	no trigger	YES
683 Marulan South Road	24 October 2017	no trigger	YES	no trigger	YES
Residence	24 October 2017	0.6	YES	100.7	YES
North West Boundary	13 October 2017	1.25	YES	100.3	YES
North East Boundary	13 October 2017	no trigger	YES	no trigger	YES
683 Marulan South Road	13 October 2017	0.9	YES	no trigger	YES
Residence	13 October 2017	0.85	YES	105.1	YES
North West Boundary	21 September 2017	0.8	YES	102.4	YES
North East Boundary	21 September 2017	No trigger	YES	No trigger	YES
683 Marulan South Road	21 September 2017	0.17	YES	98.1	YES
Residence	21 September 2017	1.28	YES	108	YES
North West Boundary	11 September 2017	No trigger	YES	No trigger	YES
North East Boundary	11 September 2017	No trigger	YES	No trigger	YES
683 Marulan South Road	11 September 2017	0.8	YES	98.9	YES
Residence	11 September 2017	No trigger	YES	No trigger	YES

Peppertree Quarry Environmental Monitoring Report

Location	Blast Date	Ground Vibration Result	GV Compliant	Overpressure Result	OP Compliant
North West Boundary	31 August 2017	1.55	YES	102.4	YES
North East Boundary	31 August 2017	No trigger	YES	No trigger	YES
683 Marulan South Road	31 August 2017	0.22	YES	97	YES
Residence	31 August 2017	1.45	YES	102.9	YES
North West Boundary	17 August 2017	1.6	YES	106.6	YES
North East Boundary	17 August 2017	No trigger	YES	No trigger	YES
683 Marulan South Road	17 August 2017	0.24	YES	112.9	YES
Residence	17 August 2017	1.75	YES	102.9	YES
North West Boundary	11 August 2017	1.15	YES	108.6	YES
North East Boundary	11 August 2017	No trigger	YES	No trigger	YES
683 Marulan South Road	11 August 2017	0.12	YES	101.1	YES
Residence	11 August 2017	1.00	YES	102.3	YES
North West Boundary	4 August 2017	0.9	YES	104.1	YES
North East Boundary	4 August 2017	No trigger	YES	No trigger	YES
683 Marulan South Road	4 August 2017	0.12	YES	103	YES
Residence	4 August 2017	0.8	YES	105.3	YES
North West Boundary	27 July 2017	0.91	YES	108.8	YES
North East Boundary	27 July 2017	No trigger	YES	No trigger	YES
683 Marulan South Road	27 July 2017	No trigger	YES	No trigger	YES
Residence	27 July 2017	0.68	YES	109	YES
North West Boundary	20 July 2017	1.07	YES	109.3	YES
North East Boundary	20 July 2017	No trigger	YES	No trigger	YES
683 Marulan South Road	20 July 2017	0.12	YES	103.5	YES
Residence	20 July 2017	1.29	YES	117.4	YES
North West Boundary	6 July 2017	1.02	YES	106.4	YES
North East Boundary	6 July 2017	No trigger	YES	No trigger	YES
683 Marulan South Road	6 July 2017	0.18	YES	98.1	YES
Residence	6 July 2017	1.31	YES	105.8	YES
North West Boundary	29 June 2017	2.00	YES	103.6	YES
North East Boundary	29 June 2017	No trigger	YES	No trigger	YES
683 Marulan South Road	29 June 2017	0.33	YES	97.3	YES
Residence	29 June 2017	2.45	YES	103.1	YES
North West Boundary	23 June 2017	0.75	YES	100.6	YES
North East Boundary	23 June 2017	No trigger	YES	No trigger	YES
683 Marulan South Road	23 June 2017	0.24	YES	96.4	YES
Residence	23 June 2017	0.75	YES	101.5	YES
North West Boundary	15 June 2017	No trigger	YES	No trigger	YES
North East Boundary	15 June 2017	No trigger	YES	No trigger	YES
683 Marulan South Road	15 June 2017	No trigger	YES	No trigger	YES
Residence	15 June 2017	No trigger	YES	No trigger	YES

Peppertree Quarry Environmental Monitoring Report

Location	Blast Date	Ground Vibration Result	GV Compliant	Overpressure Result	OP Compliant
North West Boundary	9 June 2017	0.7	YES	102.9	YES
North East Boundary	9 June 2017	No trigger	YES	No trigger	YES
683 Marulan South Road	9 June 2017	0.24	YES	98.7	YES
Residence	9 June 2017	1.35	YES	101.7	YES
North West Boundary	6 June 2017	0.7	YES	No trigger	YES
North East Boundary	6 June 2017	No trigger	YES	No trigger	YES
683 Marulan South Road	6 June 2017	0.15	YES	96.1	YES
Residence	6 June 2017	0.7	YES	105.6	YES
North West Boundary	26 may 2017	0.75	YES	No trigger	YES
North East Boundary	26 may 2017	No trigger	YES	No trigger	YES
683 Marulan South Road	26 may 2017	0.8	YES	105.3	YES
Residence	26 may 2017	0.9	YES	105.8	YES
North West Boundary	18 may 2017	0.55	YES	104.7	YES
North East Boundary	18 may 2017	No trigger	YES	No trigger	YES
683 Marulan South Road	18 may 2017	0.27	YES	100	YES
Residence	18 may 2017	1.00	YES	105.3	YES
North West Boundary	11 May 2017	No trigger	YES	No trigger	YES
North East Boundary	11 May 2017	No trigger	YES	No trigger	YES
683 Marulan South Road	11 May 2017	0.85	YES	105.8	YES
Residence	11 May 2017	0.09	YES	102.3	YES
North West Boundary	4 May 2017	No trigger	YES	No trigger	YES
North East Boundary	4 May 2017	No trigger	YES	No trigger	YES
683 Marulan South Road	4 May 2017	1.05	YES	104.2	YES
Residence	4 May 2017	0.17	YES	97.2	YES
North West Boundary	20 April 2017	No trigger	YES	No trigger	YES
North East Boundary	20 April 2017	No trigger	YES	No trigger	YES
683 Marulan South Road	20 April 2017	No trigger	YES	No trigger	YES
Residence	20 April 2017	No trigger	YES	No trigger	YES
North West Boundary	13 April 2017	No trigger	YES	No trigger	YES
North East Boundary	13 April 2017	No trigger	YES	No trigger	YES
683 Marulan South Road	13 April 2017	0.8	YES	105.3	YES
Residence	13 April 2017	0.13	YES	96.9	YES
North West Boundary	6 April 2017	No trigger	YES	No trigger	YES
North East Boundary	6 April 2017	No trigger	YES	No trigger	YES
683 Marulan South Road	6 April 2017	1.1	YES	105.4	YES
Residence	6 April 2017	0.24	YES	99.1	YES
North West Boundary	23 March 2017	1.25	YES	105.5	YES
North East Boundary	23 March 2017	No trigger	YES	No trigger	YES
683 Marulan South Road	23 March 2017	0.14	YES	105	YES
Residence	23 March 2017	1.1	YES	108.6	YES

Peppertree Quarry Environmental Monitoring Report

Location	Blast Date	Ground Vibration Result	GV Compliant	Overpressure Result	OP Compliant
North West Boundary	9 March 2017	0.88	YES	102.4	YES
North East Boundary	9 March 2017	No trigger	YES	No trigger	YES
683 Marulan South Road	9 March 2017	0.19	YES	99.7	YES
Residence	9 March 2017	0.9	YES	104.8	YES
North West Boundary	23 February 2017	115.6	YES	0.65	YES
North East Boundary	23 February 2017	No trigger	YES	No trigger	YES
683 Marulan South Road	23 February 2017	99.2	YES	0.14	YES
Residence	23 February 2017	111.1	YES	0.75	YES
North West Boundary	16 February 2017	100.3	YES	0.9	YES
North East Boundary	16 February 2017	No trigger	YES	No trigger	YES
683 Marulan South Road	16 February 2017	96.9	YES	0.16	YES
Residence	16 February 2017	101.9	YES	1.75	YES
North West Boundary	9 February 2017	100.3	YES	0.75	YES
North East Boundary	9 February 2017	No trigger	YES	No trigger	YES
683 Marulan South Road	9 February 2017	98.6	YES	0.33	YES
Residence	9 February 2017	99.8	YES	1.6	YES
North West Boundary	2 February 2017	No trigger	YES	0.87	YES
North East Boundary	2 February 2017	No trigger	YES	No trigger	YES
683 Marulan South Road	2 February 2017	105.6	YES	0.19	YES
Residence	2 February 2017	106.2	YES	2.15	YES
North West Boundary	23 January 2017	106	YES	0.81	YES
North East Boundary	23 January 2017	No trigger	YES	No trigger	YES
683 Marulan South Road	23 January 2017	100.8	YES	0.13	YES
Residence	23 January 2017	105.8	YES	0.75	YES

Peppertree Quarry Environmental Monitoring Report

Location	Blast Date	Ground Vibration Result	GV Compliant	Overpressure Result	OP Compliant
North West Boundary	12 January 2017	110.4	YES	1.06	YES
North East Boundary	12 January 2017	No trigger	YES	No trigger	YES
683 Marulan South Road	12 January 2017	100.8	YES	0.25	YES
Residence	12 January 2017	No trigger	YES	2.01	YES
North West Boundary	9 January 2017	No trigger	YES	No trigger	YES
North East Boundary	9 January 2017	No trigger	YES	No trigger	YES
683 Marulan South Road	9 January 2017	95.6	YES	0.13	YES
Residence	9 January 2017	No trigger	YES	0.82	YES
North West Boundary	5 January 2017	94.4	YES	No trigger	YES
North East Boundary	5 January 2017	No trigger	YES	No trigger	YES
683 Marulan South Road	5 January 2017	No trigger	YES	No trigger	YES
Residence	5 January 2017	No trigger	YES	No trigger	YES
North West Boundary	20 December 2016	101.5	YES	0.45	YES
North East Boundary	20 December 2016	No trigger	YES	No trigger	YES
683 Marulan South Road	20 December 2016	No trigger	YES	No trigger	YES
Pace Residence	20 December 2016	No trigger	YES	0.7	YES
North West Boundary	15 December 2016	104.4	YES	0.95	YES
North East Boundary	15 December 2016	No trigger	YES	No trigger	YES
683 Marulan South Road	15 December 2016	102.4	YES	0.4	YES
Residence	15 December 2016	No trigger	YES	1.9	YES
North West Boundary	8th December 2016	96.3	YES	0.75	YES
North East Boundary	8th December 2016	No trigger	YES	No trigger	YES
683 Marulan South Road	8th December 2016	112.5	YES	0.16	YES
Residence	8th December 2016	98.2	YES	1.3	YES
North West Boundary	1 st December 2016	105.6	YES	1.1	YES
North East Boundary	1 st December 2016	No trigger	YES	No trigger	YES
683 Marulan South Road	1 st December 2016	104.4	YES	0.21	YES
Residence	1 st December 2016	106.6	YES	2.05	YES
North West Boundary	28 th November 2016	104.7	YES	0.8	YES
North East Boundary	28 th November 2016	No trigger	YES	No trigger	YES
683 Marulan South Road	28 th November 2016	103.1	YES	0.18	YES
Residence	28 th November 2016	108.3	YES	1.6	YES
North West Boundary	24 th November 2016	107.3	YES	3.25	YES
North East Boundary	24 th November 2016	No trigger	YES	No trigger	YES
683 Marulan South Road	24 th November 2016	99.1	YES	0.49	YES
Residence	24 th November 2016	109.9	YES	3.35	YES
North West Boundary	17 th November 2016	No trigger	YES	No trigger	YES
North East Boundary	17 th November 2016	No trigger	YES	No trigger	YES
683 Marulan South Road	17 th November 2016	No trigger	YES	No trigger	YES
Residence	17 th November 2016	No trigger	YES	No trigger	YES

Peppertree Quarry Environmental Monitoring Report

Location	Blast Date	Ground Vibration Result	GV Compliant	Overpressure Result	OP Compliant
North West Boundary	10 th November 2016	1.25	YES	100.9	YES
North East Boundary	10 th November 2016	No trigger	YES	No trigger	YES
683 Marulan South Road	10 th November 2016	0.14	YES	103.1	YES
Pace Residence	10 th November 2016	1.00	YES	101.7	YES
North West Boundary	8 th November 2016	1.00	YES	100.1	YES
North East Boundary	8 th November 2016	No trigger	YES	No trigger	YES
683 Marulan South Road	8 th November 2016	0.14	YES	101.9	YES
Residence	8 th November 2016	0.85	YES	104.4	YES
North West Boundary	27 th October 2016	1.5	Yes	107.3	YES
North East Boundary	27 th October 2016	No trigger	YES	No trigger	YES
683 Marulan South Road	27 th October 2016	0.26	Yes	100.8	YES
Residence	27 th October 2016	2.30	YES	105.8	YES
North West Boundary	18 th October 2016	1.2	YES	106.1	YES
North East Boundary	18 th October 2016	No trigger	YES	No trigger	YES
683 Marulan South Road	18 th October 2016	No trigger	YES	No trigger	YES
Residence	18 th October 2016	No trigger	YES	No trigger	YES
North West Boundary	14 th October 2016	1.8	YES	100.9	YES
North East Boundary	14 th October 2016	No trigger	YES	No trigger	YES
683 Marulan South Road	14 th October 2016	0.21	YES	100.8	YES
Residence	14 th October 2016	No trigger	YES	No trigger	YES
North West Boundary	6 th October 2016	1.5	YES	100.9	YES
North East Boundary	6 th October 2016	No trigger	YES	No trigger	YES
683 Marulan South Road	6 th October 2016	0.14	YES	98.1	YES
Residence	6 th October 2016	No trigger	YES	No trigger	YES
North West Boundary	22 nd September 2016	1.15	YES	104.1	YES
North East Boundary	22 nd September 2016	No trigger	YES	No trigger	YES
683 Marulan South Road	22 nd September 2016	No trigger	YES	No trigger	YES
Pace Residence	22 nd September 2016	No trigger	YES	No trigger	YES
North West Boundary	21 st September 2016	1.45	YES	103.6	YES
North East Boundary	21 st September 2016	No trigger	YES	No trigger	YES
683 Marulan South Road	21 st September 2016	No trigger	YES	No trigger	YES
Pace Residence	21 st September 2016	No trigger	YES	No trigger	YES
North West Boundary	15 th Sept 2016	1.05	YES	110.9	YES
North East Boundary	15 th Sept 2016	No trigger	YES	No trigger	YES
683 Marulan South Road	15 th Sept 2016	0.2	YES	97.5	YES
Pace Residence	15 th Sept 2016	No trigger	YES	No trigger	YES

Peppertree Quarry Environmental Monitoring Report

Location	Blast Date	Ground Vibration Result	GV Compliant	Overpressure Result	OP Compliant
North West Boundary	5 th September 2016	0.85	YES	105.6	YES
North East Boundary	5 th September 2016	No trigger	YES	No trigger	YES
683 Marulan South Road	5 th September 2016	No trigger	YES	No trigger	YES
Pace Residence	5 th September 2016	No trigger	YES	No trigger	YES
North West Boundary	30 august 2016	No trigger	YES	No trigger	YES
North East Boundary	30 august 2016	No trigger	YES	No trigger	YES
683 Marulan South Road	30 august 2016	No trigger	YES	No trigger	YES
Pace Residence	30 august 2016	0.9	YES	103.2	YES
North West Boundary	25 august 2016	No trigger	YES	No trigger	YES
North East Boundary	25 august 2016	No trigger	YES	No trigger	YES
683 Marulan South Road	25 august 2016	No trigger	YES	No trigger	YES
Pace Residence	25 august 2016	1.7	YES	104.2	YES
North West Boundary	18 th August 2016	No trigger	YES	No trigger	YES
North East Boundary	18 th August 2016	No trigger	YES	No trigger	YES
683 Marulan South Road	18 th August 2016	No trigger	YES	No trigger	YES
Pace Residence	18 th August 2016	0.75	YES	101.1	YES
North West Boundary	11 th August 2016	No trigger	YES	No trigger	YES
North East Boundary	11 th August 2016	No trigger	YES	No trigger	YES
683 Marulan South Road	11 th August 2016	No trigger	YES	No trigger	YES
Pace Residence	11 th August 2016	0.9	YES	101.6	YES
North West Boundary	4 august 2016	No trigger	YES	No trigger	YES
North East Boundary	4 august 2016	No trigger	YES	No trigger	YES
683 Marulan South Road	4 august 2016	No trigger	YES	No trigger	YES
Pace Residence	4 august 2016	1.6	YES	103	YES
North West Boundary	21 st July 2016	No trigger	YES	No trigger	YES
North East Boundary	21 st July 2016	No trigger	YES	No trigger	YES
683 Marulan South Road	21 st July 2016	No trigger	YES	No trigger	YES
Pace Residence	21 st July 2016	0.95	YES	101.7	YES
North West Boundary	15 th July 2016	1.40	YES	102.4	YES
North East Boundary	15 th July 2016	No trigger	YES	No trigger	YES
683 Marulan South Road	15 th July 2016	No trigger	YES	No trigger	YES
Pace Residence	15 th July 2016	1.15	YES	101.3	YES
North West Boundary	30 th June 2016	No trigger	YES	No trigger	YES
North East Boundary	30 th June 2016	No trigger	YES	No trigger	YES
683 Marulan South Road	30 th June 2016	No trigger	YES	No trigger	YES
Pace Residence	30 th June 2016	No trigger	YES	No trigger	YES

Peppertree Quarry Environmental Monitoring Report

Location	Blast Date	Ground Vibration Result	GV Compliant	Overpressure Result	OP Compliant
North West Boundary	16 th June 2016	No trigger	YES	No trigger	YES
North East Boundary	16 th June 2016	No trigger	YES	No trigger	YES
683 Marulan South Road	16 th June 2016	No trigger	YES	No trigger	YES
Pace Residence	16 th June 2016	No trigger	YES	No trigger	YES
North West Boundary	2 nd June 2016	No trigger	YES	No trigger	YES
North East Boundary	2 nd June 2016	No trigger	YES	No trigger	YES
683 Marulan South Road	2 nd June 2016	No trigger	YES	No trigger	YES
Pace Residence	2 nd June 2016	No trigger	YES	No trigger	YES
North West Boundary	26 th May 2016	No trigger	YES	No trigger	YES
North East Boundary	26 th May 2016	No trigger	YES	No trigger	YES
683 Marulan South Road	26 th May 2016	No trigger	YES	No trigger	YES
Pace Residence	26 th May 2016	No trigger	YES	No trigger	YES
North West Boundary	19 th May 2016	No trigger	YES	No trigger	YES
North East Boundary	19 th May 2016	No trigger	YES	No trigger	YES
683 Marulan South Road	19 th May 2016	No trigger	YES	No trigger	YES
Pace Residence	19 th May 2016	No trigger	YES	No trigger	YES
North West Boundary	12 th May 2016	No trigger	YES	No trigger	YES
North East Boundary	12 th May 2016	No trigger	YES	No trigger	YES
683 Marulan South Road	12 th May 2016	No trigger	YES	No trigger	YES
Pace Residence	12 th May 2016	No trigger	YES	No trigger	YES
North West Boundary	6 th May 2016	No trigger	YES	No trigger	YES
North East Boundary	6 th May 2016	No trigger	YES	No trigger	YES
683 Marulan South Road	6 th May 2016	No trigger	YES	No trigger	YES
Pace Residence	6 th May 2016	No trigger	YES	No trigger	YES
North West Boundary	28th April 2016	No trigger	YES	No trigger	YES
North East Boundary	28th April 2016	No trigger	YES	No trigger	YES
683 Marulan South Road	28th April 2016	No trigger	YES	No trigger	YES
Pace Residence	28th April 2016	No trigger	YES	No trigger	YES
North West Boundary	21st April 2016	No trigger	YES	No trigger	YES
North East Boundary	21st April 2016	No trigger	YES	No trigger	YES
683 Marulan South Road	21st April 2016	No trigger	YES	No trigger	YES
Pace Residence	21st April 2016	No trigger	YES	No trigger	YES
North West Boundary	14 th April 2016	No trigger	YES	No trigger	YES
North East Boundary	14 th April 2016	No trigger	YES	No trigger	YES
683 Marulan South Road	14 th April 2016	No trigger	YES	No trigger	YES
Pace Residence	14 th April 2016	No trigger	YES	No trigger	YES

Peppertree Quarry Environmental Monitoring Report

Location	Blast Date	Ground Vibration Result	GV Compliant	Overpressure Result	OP Compliant
North West Boundary	8 th April 2016	No trigger	YES	No trigger	YES
North East Boundary	8 th April 2016	No trigger	YES	No trigger	YES
683 Marulan South Road	8 th April 2016	No trigger	YES	No trigger	YES
Pace Residence	8 th April 2016	No trigger	YES	No trigger	YES
North West Boundary	31st March 2016	No trigger	YES	No trigger	YES
North East Boundary	31st March 2016	No trigger	YES	No trigger	YES
683 Marulan South Road	31st March 2016	No trigger	YES	No trigger	YES
Pace Residence	31st March 2016	No trigger	YES	No trigger	YES
North West Boundary	24 th March 2016	No trigger	YES	No trigger	YES
North East Boundary	24 th March 2016	No trigger	YES	No trigger	YES
683 Marulan South Road	24 th March 2016	No trigger	YES	No trigger	YES
Pace Residence	24 th March 2016	No trigger	YES	No trigger	YES
North West Boundary	18 th March 2016	No trigger	YES	No trigger	YES
North East Boundary	18 th March 2016	No trigger	YES	No trigger	YES
683 Marulan South Road	18 th March 2016	0.1	YES	111.2	YES
Pace Residence	18 th March 2016	No trigger	YES	No trigger	YES
North West Boundary	11 th March 2016	No trigger	YES	No trigger	YES
North East Boundary	11 th March 2016	No trigger	YES	No trigger	YES
683 Marulan South Road	11 th March 2016	No trigger	YES	No trigger	YES
Pace Residence	11 th March 2016	No trigger	YES	No trigger	YES
North West Boundary	3 rd March 2016	No trigger	YES	No trigger	YES
North East Boundary	3 rd March 2016	No trigger	YES	No trigger	YES
683 Marulan South Road	3 rd March 2016	No trigger	YES	No trigger	YES
Pace Residence	3 rd March 2016	No trigger	YES	No trigger	YES
North West Boundary	25 th February 2016	0.1	YES	102.3	YES
North East Boundary	25 th February 2016	No trigger	YES	No trigger	YES
683 Marulan South Road	25 th February 2016	No trigger	YES	No trigger	YES
Pace Residence	25 th February 2016	No trigger	YES	No trigger	YES
North West Boundary	22nd February 2016	No trigger	YES	No trigger	YES
North East Boundary	22nd February 2016	No trigger	YES	No trigger	YES
683 Marulan South Road	22nd February 2016	No trigger	YES	No trigger	YES
Pace Residence	22nd February 2016	No trigger	YES	No trigger	YES
North West Boundary	11 th February 2016	0.05	YES	103.6	YES
North East Boundary	11 th February 2016	No trigger	YES	No trigger	YES
683 Marulan South Road	11 th February 2016	No trigger	YES	No trigger	YES
Pace Residence	11 th February 2016	No trigger	YES	No trigger	YES

Peppertree Quarry Environmental Monitoring Report

Location	Blast Date	Ground Vibration Result	GV Compliant	Overpressure Result	OP Compliant
North West Boundary	4 th February 2016	0.05	YES	104.7	YES
North East Boundary	4 th February 2016	No trigger	YES	No trigger	YES
683 Marulan South Road	4 th February 2016	No trigger	YES	No trigger	YES
Pace Residence	4 th February 2016	No trigger	YES	No trigger	YES
North West Boundary	28 th January 2016	0.05	YES	103.6	YES
North East Boundary	28 th January 2016	No trigger	YES	No trigger	YES
683 Marulan South Road	28 th January 2016	No trigger	YES	No trigger	YES
Pace Residence	28 th January 2016	No trigger	YES	No trigger	YES
North West Boundary	21 January 2016	No trigger	YES	No trigger	YES
North East Boundary	21 January 2016	No trigger	YES	No trigger	YES
683 Marulan South Road	21 January 2016	No trigger	YES	No trigger	YES
Pace Residence	21 January 2016	No trigger	YES	No trigger	YES
North West Boundary	16 th January 2016	No trigger	YES	No trigger	YES
North East Boundary	16 th January 2016	No trigger	YES	No trigger	YES
683 Marulan South Road	16 th January 2016	No trigger	YES	No trigger	YES
Pace Residence	16 th January 2016	0.1	YES	100.9	YES
North West Boundary	12 January 2016	No trigger	YES	No trigger	YES
North East Boundary	12 January 2016	No trigger	YES	No trigger	YES
683 Marulan South Road	12 January 2016	No trigger	YES	No trigger	YES
Pace Residence	12 January 2016	0.95	YES	5	YES
North West Boundary	18 th December 2015	No trigger	YES	No trigger	YES
North East Boundary	18 th December 2015	No trigger	YES	No trigger	YES
683 Marulan South Road	18 th December 2015	No trigger	YES	No trigger	YES
Pace Residence	18 th December 2015	No trigger	YES	No trigger	YES
North West Boundary	10 th December 2015	No trigger	YES	No trigger	YES
North East Boundary	10 th December 2015	No trigger	YES	No trigger	YES
683 Marulan South Road	10 th December 2015	No trigger	YES	No trigger	YES
Pace Residence	10 th December 2015	No trigger	YES	No trigger	YES
North West Boundary	4 th December 2015	No trigger	YES	No trigger	YES
North East Boundary	4 th December 2015	No trigger	YES	No trigger	YES
683 Marulan South Road	4 th December 2015	0.21	YES	97.80	YES
Pace Residence	4 th December 2015	0.85	YES	No trigger	YES
North West Boundary	3 rd December 2015	No trigger	YES	No trigger	YES
North East Boundary	3 rd December 2015	No trigger	YES	No trigger	YES
683 Marulan South Road	3 rd December 2015	No trigger	YES	No trigger	YES
Pace Residence	3 rd December 2015	No trigger	YES	No trigger	YES

Peppertree Quarry Environmental Monitoring Report

Location	Blast Date	Ground Vibration Result	GV Compliant	Overpressure Result	OP Compliant
North West Boundary	30 th November 2015	No trigger	YES	No trigger	YES
North East Boundary	30 th November 2015	No trigger	YES	No trigger	YES
683 Marulan South Road	30 th November 2015	No trigger	YES	No trigger	YES
Pace Residence	30 th November 2015	1.10	YES	No trigger	YES
North West Boundary	27th November 2015	No trigger	YES	No trigger	YES
North East Boundary	27th November 2015	No trigger	YES	No trigger	YES
683 Marulan South Road	27th November 2015	No trigger	YES	No trigger	YES
Pace Residence	27th November 2015	1.05	YES	No trigger	YES
North West Boundary	20th November2015	No trigger	YES	No trigger	YES
North East Boundary	20th November2015	No trigger	YES	No trigger	YES
683 Marulan South Road	20th November2015	No trigger	YES	No trigger	YES
Pace Residence	20th November2015	0.85	YES	No trigger	YES
North West Boundary	19 th November 2015	No trigger	YES	No trigger	YES
North East Boundary	19th November2015	No trigger	YES	No trigger	YES
683 Marulan South Road	19th November2015	No trigger	YES	No trigger	YES
Pace Residence	19th November2015	No trigger	YES	No trigger	YES
North West Boundary	13th November2015	No trigger	YES	No trigger	YES
North East Boundary	13th November2015	No trigger	YES	No trigger	YES
683 Marulan South Road	13th November2015	00.18	YES	96.0	YES
Pace Residence	13th November2015	No trigger	YES	No trigger	YES
North West Boundary	9 th November 2015	No trigger	YES	No trigger	YES
North East Boundary	9 th November 2015	No trigger	YES	No trigger	YES
683 Marulan South Road	9 th November 2015	No trigger	YES	No trigger	YES
Pace Residence	9 th November 2015	No trigger	YES	No trigger	YES
North West Boundary	5 th November 2015	No trigger	YES	No trigger	YES
North East Boundary	5 th November 2015	No trigger	YES	No trigger	YES
683 Marulan South Road	5 th November 2015	0.37	YES	109	YES
Pace Residence	5 th November 2015	1.4	YES	112	YES
North West Boundary	30 th October 2015	No trigger	YES	No trigger	YES
North East Boundary	30 th October 2015	No trigger	YES	No trigger	YES
683 Marulan South Road	30 th October 2015	No trigger	YES	No trigger	YES
Pace Residence	30 th October 2015	No trigger	YES	No trigger	YES
North West Boundary	29 th October 2015	No trigger	YES	No trigger	YES
North East Boundary	29 th October 2015	No trigger	YES	No trigger	YES
683 Marulan South Road	29 th October 2015	No trigger	YES	No trigger	YES
Pace Residence	29 th October 2015	0.95	YES	103.8	YES

Peppertree Quarry Environmental Monitoring Report

Location	Blast Date	Ground Vibration Result	GV Compliant	Overpressure Result	OP Compliant
North West Boundary	23 rd October 2015	No trigger	YES	No trigger	YES
North East Boundary	23 rd October 2015	No trigger	YES	No trigger	YES
683 Marulan South Road	23 rd October 2015	No trigger	YES	No trigger	YES
Pace Residence	23 rd October 2015	No trigger	YES	No trigger	YES
North West Boundary	9 th October 2015	No trigger	YES	No trigger	YES
North East Boundary	9 th October 2015	No trigger	YES	No trigger	YES
683 Marulan South Road	9 th October 2015	0.18	YES	96.2	YES
Pace Residence	9 th October 2015	0.95	YES	98.3	YES
North West Boundary	28 th September 2015	1.2	YES	101	YES
North East Boundary	28 th September 2015	No trigger	YES	No trigger	YES
683 Marulan South Road	28 th September 2015	0.18	YES	98.6	YES
Pace Residence	28 th September 2015	1.25	YES	103.2	YES
North West Boundary	23 rd September 2015	No trigger	YES	No trigger	YES
North East Boundary	23 rd September 2015	No trigger	YES	No trigger	YES
683 Marulan South Road	23 rd September 2015	No trigger	YES	No trigger	YES
Pace Residence	23 rd September 2015	No trigger	YES	No trigger	YES
North West Boundary	21 st September 2015	No trigger	YES	No trigger	YES
North East Boundary	21 st September 2015	No trigger	YES	No trigger	YES
683 Marulan South Road	21 st September 2015	No trigger	YES	No trigger	YES
Pace Residence	21 st September 2015	1.15	YES	100.9	YES
North West Boundary	16 th September 2015	No trigger	YES	No trigger	YES
North East Boundary	16 th September 2015	No trigger	YES	No trigger	YES
683 Marulan South Road	16 th September 2015	No trigger	YES	No trigger	YES
Pace Residence	16 th September 2015	1.2	YES	102.5	YES
North West Boundary	11 th September 2015	No trigger	YES	No trigger	YES
North East Boundary	11 th September 2015	No trigger	YES	No trigger	YES
683 Marulan South Road	11 th September 2015	No trigger	YES	No trigger	YES
Pace Residence	11 th September 2015	No trigger	YES	No trigger	YES
North West Boundary	9 th September 2015	No trigger	YES	No trigger	YES
North East Boundary	9 th September 2015	No trigger	YES	No trigger	YES
683 Marulan South Road	9 th September 2015	0.23	YES	98.7	YES
Pace Residence	9 th September 2015	0.95	YES	103.2	YES
North West Boundary	19 th August 2015	No trigger	YES	No trigger	YES
North East Boundary	19 th August 2015	No trigger	YES	No trigger	YES
683 Marulan South Road	19 th August 2015	No trigger	YES	No trigger	YES
Pace Residence	19 th August 2015	1.3	YES	103.2	YES

Peppertree Quarry Environmental Monitoring Report

Location	Blast Date	Ground Vibration Result	GV Compliant	Overpressure Result	OP Compliant
North West Boundary	7 th August 2015	1.00	YES	101.8	YES
North East Boundary	7 th August 2015	No trigger	YES	No trigger	YES
683 Marulan South Road	7 th August 2015	No trigger	YES	No trigger	YES
Pace Residence	7 th August 2015	1.25	YES	101.6	YES
North West Boundary	29 th July 2015	No trigger	YES	No trigger	YES
North East Boundary	29 th July 2015	No trigger	YES	No trigger	YES
683 Marulan South Road	29 th July 2015	0.16	YES	No trigger	YES
Pace Residence	29 th July 2015	No trigger	YES	No trigger	YES
North West Boundary	20 th July 2015	No trigger	YES	No trigger	YES
North East Boundary	20 th July 2015	No trigger	YES	No trigger	YES
683 Marulan South Road	20 th July 2015	0.26	YES	100.1	YES
Pace Residence	20 th July 2015	1.35	YES	105.5	YES
North West Boundary	15 th July 2015	No trigger	YES	No trigger	YES
North East Boundary	15 th July 2015	No trigger	YES	No trigger	YES
683 Marulan South Road	15 th July 2015	0.30	YES	106	YES
Pace Residence	15 th July 2015	1.00	YES	110.7	YES
North West Boundary	12 th July 2015	No trigger	YES	No trigger	YES
North East Boundary	12 th July 2015	No trigger	YES	No trigger	YES
683 Marulan South Road	12 th July 2015	0.18	YES	100.2	YES
Pace Residence	12 th July 2015	No trigger	YES	No trigger	YES
North West Boundary	2 nd July 2015	No trigger	YES	No trigger	YES
North East Boundary	2 nd July 2015	No trigger	YES	No trigger	YES
683 Marulan South Road	2 nd July 2015	0.38	YES	102.9	YES
Pace Residence	2 nd July 2015	1.65	YES	101.6	YES
North West Boundary	26 th June 2015	No trigger	YES	No trigger	YES
North East Boundary	26 th June 2015	No trigger	YES	No trigger	YES
683 Marulan South Road	26 th June 2015	No trigger	YES	No trigger	YES
Pace Residence	26 th June 2015	0.8	YES	103.4	YES
North West Boundary	19 th June 2015	No trigger	YES	No trigger	YES
North East Boundary	19 th June 2015	No trigger	YES	No trigger	YES
683 Marulan South Road	19 th June 2015	0.19	YES	106.7	YES
Pace Residence	19 th June 2015	No trigger	YES	No trigger	YES
North West Boundary	16 th June 2015	No trigger	YES	No trigger	YES
North East Boundary	16 th June 2015	No trigger	YES	No trigger	YES
683 Marulan South Road	16 th June 2015	0.19	YES	98.7	YES
Pace Residence	16 th June 2015	No trigger	YES	No trigger	YES

Peppertree Quarry Environmental Monitoring Report

Location	Blast Date	Ground Vibration Result	GV Compliant	Overpressure Result	OP Compliant
North West Boundary	5 th June 2015	No trigger	YES	No trigger	YES
North East Boundary	5 th June 2015	No trigger	YES	No trigger	YES
683 Marulan South Road	5 th June 2015	1.4	YES	104.4	YES
Pace Residence	5 th June 2015	0.33	YES	101.5	YES
North West Boundary	28 th May 2015	No trigger	YES	No trigger	YES
North East Boundary	28 th May 2015	No trigger	YES	No trigger	YES
683 Marulan South Road	28 th May 2015	1.95	YES	105	YES
Pace Residence	28 th May 2015	0.47	YES	101.6	YES
North West Boundary	21st May 2015	No trigger	YES	No trigger	YES
North East Boundary	21st May 2015	No trigger	YES	No trigger	YES
683 Marulan South Road	21st May 2015	1.35	YES	108.4	YES
Pace Residence	21st May 2015	0.32	YES	102	YES
North West Boundary	14 th May 2015	1.6	YES	109.4	YES
North East Boundary	14 th May 2015	No trigger	YES	No trigger	YES
683 Marulan South Road	14 th May 2015	1.8	YES	108.4	YES
Pace Residence	14 th May 2015	0.25	YES	101.1	YES
North West Boundary	8th May 2015	1.05	YES	108.4	YES
North East Boundary	8th May 2015	No trigger	YES	No trigger	YES
683 Marulan South Road	8th May 2015	1	YES	101.7	YES
Pace Residence	8th May 2015	No trigger	YES	No trigger	YES
North West Boundary	5 th May 2015	No trigger	YES	No trigger	YES
North East Boundary	5 th May 2015	No trigger	YES	No trigger	YES
683 Marulan South Road	5 th May 2015	0.95	YES	105.7	YES
Pace Residence	5 th May 2015	0.17	YES	97.9	YES
North West Boundary	1 st May 2015	1.75	YES	110	YES
North East Boundary	1 st May 2015	No trigger	YES	No trigger	YES
683 Marulan South Road	1 st May 2015	1.4	YES	112.3	YES
Pace Residence	1 st May 2015	0.38	YES	109	YES
North West Boundary	24 th April 2015	1.5	YES	103.3	YES
North East Boundary	24 th April 2015	No trigger	YES	No trigger	YES
683 Marulan South Road	24 th April 2015	0.16	YES	100.3	YES
Pace Residence	24 th April 2015	1.4	YES	103.9	YES
North West Boundary	17 th April 2015	No trigger	YES	No trigger	YES
North East Boundary	17 th April 2015	No trigger	YES	No trigger	YES
683 Marulan South Road	17 th April 2015	No trigger	YES	No trigger	YES
Pace Residence	17 th April 2015	No trigger	YES	No trigger	YES

Peppertree Quarry Environmental Monitoring Report

Location	Blast Date	Ground Vibration Result	GV Compliant	Overpressure Result	OP Compliant
North West Boundary	13 th April 2015	No trigger	YES	No trigger	YES
North East Boundary	13 th April 2015	No trigger	YES	No trigger	YES
683 Marulan South Road	13 th April 2015	No trigger	YES	No trigger	YES
Pace Residence	13 th April 2015	1.05	YES	No trigger	YES
North West Boundary	30 th March 2015	No trigger	YES	No trigger	YES
North East Boundary	30 th March 2015	No trigger	YES	No trigger	YES
683 Marulan South Road	30 th March 2015	No trigger	YES	No trigger	YES
Pace Residence	30 th March 2015	1.05	YES	No trigger	YES
North West Boundary	27 th March 2015	No trigger	YES	No trigger	YES
North East Boundary	27 th March 2015	No trigger	YES	113.6	YES
683 Marulan South Road	27 th March 2015	No trigger	YES	No trigger	YES
Pace Residence	27 th March 2015	No trigger	YES	No trigger	YES
North West Boundary	23 rd March 2015	No trigger	YES	No trigger	YES
North East Boundary	23 rd March 2015	No trigger	YES	100	YES
683 Marulan South Road	23 rd March 2015	No trigger	YES	No trigger	YES
Pace Residence	23 rd March 2015	No trigger	YES	No trigger	YES
North West Boundary	20 th March 2015	No trigger	YES	No trigger	YES
North East Boundary	20 th March 2015	No trigger	YES	No trigger	YES
683 Marulan South Road	20 th March 2015	No trigger	YES	No trigger	YES
Pace Residence	20 th March 2015	No trigger	YES	No trigger	YES
North West Boundary	5 th March 2015	No trigger	YES	No trigger	YES
North East Boundary	5 th March 2015	No trigger	YES	No trigger	YES
683 Marulan South Road	5 th March 2015	No trigger	YES	No trigger	YES
Pace Residence	5 th March 2015	2.1	YES	No trigger	YES
North West Boundary	25 February 2015	1.55	YES	108.8	YES
North East Boundary	25 February 2015	No trigger	YES	No trigger	YES
683 Marulan South Road	25 February 2015	No trigger	YES	No trigger	YES
Pace Residence	25 February 2015	2.5	YES	105.8	YES
North West Boundary	10 th February 2015	No trigger	YES	No trigger	YES
North East Boundary	10 th February 2015	No trigger	YES	No trigger	YES
683 Marulan South Road	10 th February 2015	No trigger	YES	No trigger	YES
Pace Residence	10 th February 2015	1.6	YES	104.2	YES
North West Boundary	29 th January 2015	No trigger	YES	No trigger	YES
North East Boundary	29 th January 2015	No trigger	YES	No trigger	YES
683 Marulan South Road	29 th January 2015	No trigger	YES	No trigger	YES
Pace Residence	29 th January 2015	1.1	YES	109	YES

Peppertree Quarry Environmental Monitoring Report

Location	Blast Date	Ground Vibration Result	GV Compliant	Overpressure Result	OP Compliant
North West Boundary	20 January 2015	No trigger	YES	No trigger	YES
North East Boundary	20 January 2015	No trigger	YES	No trigger	YES
683 Marulan South Road	20 January 2015	No trigger	YES	No trigger	YES
Pace Residence	20 January 2015	1.10	YES	105.3	YES
North West Boundary	8 th January 2015	2.00	YES	101.6	YES
North East Boundary	8 th January 2015	No trigger	YES	No trigger	YES
683 Marulan South Road	8 th January 2015	No trigger	YES	No trigger	YES
Pace Residence	8 th January 2015	1.35	YES	102.3	YES

3.0 Noise Monitoring

Noise monitoring is conducted as per condition L6 of EPL 13088. The next round of monitoring was conducted at the end of July 2018. Results are not yet available.

Sample Period: July 2018
Licensee: Peppertree Quarry
Licensee Address: 843 Marulan south road, Marulan NSW 2579
EPL No: 13088

Qualifications related to noise:

Noise is measured quarterly

The identified noise emission limits apply under meteorological conditions of wind speed 3m/s at 10 meters above ground level, and temp inversion conditions. Monitoring protocols are contained within the Noise and Blasting Management Plan found on this website.

Noise monitoring is measured at the 5 residential receiver locations. – R2, R3, R4, R8, R17 since approval of Modification 4 in August 2016.

Results

Peppertree Quarry Environmental Monitoring Report

Historical Results

Receiver	Date	Site Noise Level Contribution	Operational Criteria (dB(A))
Receiver	Date	Site Noise Level Contribution	Operational Criteria (dB(A))
EPL ID		LAeq, 15 minute (dB(A))	daytime
R17	1/5/2018	<30	35
R2	1/5/2018	<30	35
R3	1/5/2018	<30	35
R8	1/5/2018	31	41
R4	1/5/2018	31	35
R17	2/5/2018	31	35
R2	2/5/2018	31	35
R3	2/5/2018	<30	35
R8	2/5/2018	33	41
R4	2/5/2018	<30	35

Receiver	Date	Site Noise Level Contribution	Operational Criteria (dB(A))
EPL ID		Leq, 15 minute (dB(A))	evening / night
R17	2/5/2018	<30	35
R17	2/5/2018	32	35
R2	2/5/2018	32	35
R2	3/5/2018	33	35
R8	3/5/2018	<30	35
R8	3/5/2018	<30	35
R4	3/5/2018	<30	35
R4	3/5/2018	<30	35
R3	3/5/2018	<30	35
R3	3/5/2018	<30	35

Receiver	Date	Site Noise Level Contribution	Operational Criteria (dB(A))
EPL ID		LA1, 1 minute (dB(A))	evening
R2	2/5/2018	32	45
R2	3/5/2018	33	45
R8	3/5/2018	<30	45
R8	3/5/2018	<30	45
R17	2/5/2018	<30	45
R17	2/5/2018	32	45
R4	3/5/2018	<30	45
R4	3/5/2018	<30	45
R3	3/5/2018	<30	45

Peppertree Quarry Environmental Monitoring Report

R3	3/5/2018	<30	45
EPL ID		LAeq, 15 minute (dB(A))	daytime
R2	30/01/2018	26	35
R2	30/01/2018	26	35
R2	31/01/2018	16	35
R2	31/01/2018	18	35
R8	30/01/2018	24	41
R8	30/01/2018	22	41
R8	31/01/2018	25	41
R8	31/01/2018	35	41
R17	30/01/2018	22	35
R17	30/01/2018	24	35
R17	31/01/2018	15	35
R17	31/01/2018	11	35
R4	30/01/2018	19	35
R4	30/01/2018	22	35
R4	31/01/2018	28	35
R4	31/01/2018	29	35
R3	30/01/2018	23	35
R3	30/01/2018	25	35
R3	31/01/2018	31	35
R3	31/01/2018	30	35

Receiver	Date	Site Noise Level Contribution	Operational Criteria (dB(A))
EPL ID		Leq, 15 minute (dB(A))	evening / night
R2	1/02/2018	19	35
R2	1/02/2018	20	35
R8	31/01/2018	30	35
R8	31/01/2018	30	35
R17	1/02/2018	15	35
R17	1/02/2018	18	35
R4	31/01/2018	27	35
R4	31/01/2018	28	35
R3	1/02/2018	24	35
R3	1/02/2018	24	35

Receiver	Date	Site Noise Level Contribution	Operational Criteria (dB(A))
EPL ID		LA1, 1 minute (dB(A))	evening
R2	1/02/2018	19	45
R2	1/02/2018	20	45
R8	31/01/2018	33	45
R8	31/01/2018	33	45

Peppertree Quarry Environmental Monitoring Report

R17	1/02/2018	17	45
R17	1/02/2018	19	45
R4	31/01/2018	28	45
R4	31/01/2018	29	45
R3	1/02/2018	25	45
R3	1/02/2018	26	45

Receiver	Date	Site Noise Level Contribution	Operational Criteria (dB(A))
EPL ID		LAeq, 15 minute (dB(A))	daytime
R17	12-Dec-17	20	35
R17	12-Dec-17	19	35
R2	12-Dec-17	23	35
R2	12-Dec-17	23	35
R3	12-Dec-17	25	35
R3	12-Dec-17	25	35
R4	12-Dec-17	30	35
R4	12-Dec-17	23	35
R17	13-Dec-17	27	35
R2	13-Dec-17	30	35
R3	13-Dec-17	25	35
R8	13-Dec-17	26	35
R4	13-Dec-17	26	35

Receiver	Date	Site Noise Level Contribution	Operational Criteria (dB(A))
EPL ID		Leq, 15 minute (dB(A))	evening / night
R8	12-Dec-2017	21	35
R8	12-Dec-2017	18	35
R8	13-Dec-2017	31	35
R8	13-Dec-2017	29	35
R4	13-Dec-2017	27	35
R4	13-Dec-17	27	35
R3	13-Dec-17	30	35
R3	13-Dec-17	30	35
R3	14-Dec-17	29	35
R3	14-Dec-17	29	35
R2	14-Dec-17	30	35
R2	14-Dec-17	28	35
R17	14-Dec-17	22	35
R17	14-Dec-17	21	35
R17	14-Dec-17	20	35
R8	14-Dec-17	26	35
R8	14-Dec-17	28	35

Receiver	Date	Site Noise Level Contribution	Operational Criteria (dB(A))
----------	------	-------------------------------	------------------------------

Peppertree Quarry Environmental Monitoring Report

EPL ID		LA1, 1 minute (dB(A))	evening
R4	13-Dec-17	31	45
R4	13-Dec-17	34	45
R3	13-Dec-17	34	45
R3	13-Dec-17	33	45
R3	14-Dec-17	33	45
R3	14-Dec-17	34	45
R2	14-Dec-17	32	45
R2	14-Dec-17	26	45
R17	14-Dec-17	25	45
R17	14-Dec-17	24	45
R17	14-Dec-17	30	45
R8	14-Dec-17	32	45
R8	14-Dec-17	31	45

Receiver	Date	Predicted Site Noise Level Contribution	Operational Criteria (dB(A))
EPL ID		LAeq, 15 minute (dB(A))	daytime
R8	11 th July 2017	27	41
R4	11 th July 2017	27	35
R17	11 th July 2017	16	35
R2	11 th July 2017	25	35
R3	11 th July 2017	29	35
R8	12 th July 2017	28	41
R4	12 th July 2017	28	35
R17	12 th July 2017	23	35
R2	12 th July 2017	33	35
R3	12 th July 2017	38*	35
R3	12 th July 2017	43*	35
R3	12 th July 2017	26	35

Receiver	Date	Site Noise Level Contribution	Operational Criteria (dB(A))
EPL ID		Leq, 15 minute (dB(A))	evening
R8	13 th July 2017	31	35
R8	13 th July 2017	32	35
R4	13 th July 2017	35	35
R4	13 th July 2017	27	35
R4	13 th July 2017	35	35
R17	12 th July 2017	16	35
R17	12 th July 2017	18	35
R2	13 th June 2017	27	35
R2	13 th June 2017	29	35
R3	12 th July 2017	32	35
R3	12 th July 2017	33	35
R3	12 th July 2017	33	35
R3	13 th July 2017	34	35

Peppertree Quarry Environmental Monitoring Report

Receiver	Date	Site Noise Level Contribution	Operational Criteria (dB(A))
EPL ID		LA1, 1 minute (dB(A))	evening
R8	12 th July 2017	35	45
R8	12 th July 2017	36	45
R4	13 th July 2017	31	45
R4	13 th July 2017	39	45
R4	13 th July 2017	39	45
R17	12 th July 2017	20	45
R17	12 th July 2017	22	45
R2	13 th July 2017	31	45
R2	13 th July 2017	33	45
R3	12 th July 2017	36	45
R3	12 th July 2017	37	45
R3	13 th July 2017	39	45
R3	13 th July 2017	38	45

Note *two results were over the operational criteria however inversion conditions were in place and therefore the readings are not valid.

Receiver	Date	Predicted Site Noise Level Contribution	Operational Criteria (dB(A))
EPL ID		LAeq, 15 minute (dB(A))	daytime
R8	16 th May 2017	16	41
R4	16 th May 2017	26	35
R17	16 th May 2017	17	35
R2	16 th May 2017	26	35
R3	16 th May 2017	21	35
R8	17 TH May 2017	19	41
R8	17 TH May 2017	17	41
R4	17 TH May 2017	17	35
R4	17 TH May 2017	17	35
R17	17 TH May 2017	11	35
R17	17 TH May 2017	9	35
R2	17 TH May 2017	24	35
R2	17 TH May 2017	23	35
R3	17 TH May 2017	27	35
R3	17 TH May 2017	19	35

Receiver	Date	Site Noise Level Contribution	Operational Criteria (dB(A))
EPL ID		LA1, 1 minute (dB(A))	evening
R8	18 TH May 2017	35	45
R8	18 TH May 2017	34	45
R4	18 TH May 2017	26	45
R4	18 TH May 2017	27	45

Peppertree Quarry Environmental Monitoring Report

R17	18 TH May 2017	13	45
R17	18 TH May 2017	14	45
R2	18 TH May 2017	27	45
R2	18 TH May 2017	28	45
R3	18 TH May 2017	42	45
R3	18 TH May 2017	25	45

Receiver	Date	Site Noise Level Contribution	Operational Criteria (dB(A))
EPL ID		Leq, 15 minute (dB(A))	evening
R8	17 TH May 2017	33	35
R8	17 TH May 2017	32	35
R4	17 TH May 2017	26	35
R4	17 TH May 2017	27	35
R17	18 TH May 2017	13	35
R17	18 TH May 2017	14	35
R2	18 TH May 2017	27	35
R2	18 TH May 2017	28	35
R3	18 TH May 2017	33	35
R3	18 TH May 2017	24	35

Receiver	Date	Predicted Site Noise Level Contribution	Operational Criteria (dB(A))
EPL ID		LAeq, 15 minute (dB(A))	daytime
R17	9th February 2017	23	35
R17	9th February 2017	22	35
R3	9th February 2017	28	35
R3	9th February 2017	29	35
R2	9th February 2017	27	35
R2	9th February 2017	27	35
R4	9th February 2017	22	35
R4	9th February 2017	21	35
R17	9th February 2017	21	35
R8	9th February 2017	26	41
R8	9th February 2017	27	41
R17	9th February 2017	20	35

Receiver	Date	Site Noise Level Contribution	Operational Criteria (dB(A))
EPL ID		Leq, 15 minute (dB(A))	evening
R3	10th February 2017	29	35
R3	10th February 2017	30	35
R2	10th February 2017	26	35
R2	10th February 2017	25	35

Peppertree Quarry Environmental Monitoring Report

R17	9th February 2017	16	35
R17	9th February 2017	17	35
R17	9th February 2017	19	35
R17	9th February 2017	23	35
R17	9th February 2017	24	35
R17	9th February 2017	22	35
R17	9th February 2017	21	35
R4	10th February 2017	26	35
R4	10th February 2017	27	35
R4	10th February 2017	27	35
R17	10th February 2017	23	35

Receiver	Date	Site Noise Level Contribution	Operational Criteria (dB(A))
EPL ID		LA1, 1 minute (dB(A))	evening
R4	9th February 2017	26	45
R4	9th February 2017	27	45
R4	9th February 2017	27	45
R17	9th February 2017	23	45
R17	9th February 2017	23	45
R17	9th February 2017	26	45
R17	9th February 2017	26	45
R17	9th February 2017	33	45
R17	9th February 2017	34	45
R17	9th February 2017	32	45
R17	9th February 2017	26	45
R3	9th February 2017	34	45
R2	9th February 2017	35	45
R2	9th February 2017	31	45
R2	9th February 2017	30	45

Receiver	Date	Predicted Site Noise Level Contribution	Operational Criteria (dB(A))
EPL ID		LAeq, 15 minute (dB(A))	daytime
R17	26th October 2016	17	35
R17	26th October 2016	15	35
R3	26th October 2016	21	35
R3	26th October 2016	22	35
R2	26th October 2016	28	35
R2	26th October 2016	30	35
R4	26th October 2016	25	35
R4	26th October 2016	25	35
R8	26th October 2016	26	41
R8	26th October 2016	28	41
R3	25th October 2016	27	35

Peppertree Quarry Environmental Monitoring Report

R2	25th October 2016	31	35
R17	25th October 2016	23	35
R4	25th October 2016	22	35
R8	25th October 2016	26	41

Receiver	Date	Site Noise Level Contribution	Operational Criteria (dB(A))
EPL ID		LA1, 1 minute (dB(A))	evening
R17	26 th October 2016	26	45
R17	26 th October 2016	25	45
R3	26 th October 2016	28	45
R3	27 th October 2016	28	45
R2	27 th October 2016	31	45
R2	27 th October 2016	31	45
R4	27 th October 2016	26	45
R4	27 th October 2016	26	45
R8	27 th October 2016	24	45
R8	27 th October 2016	34	45
R17	27 th October 2016	23	45
R17	27 th October 2016	22	45

Receiver	Date	Site Noise Level Contribution	Operational Criteria (dB(A))
EPL ID		LAeq, 15 minute (dB(A))	evening
R17	26th October 2016	26	35
R17	26th October 2016	25	35
R3	26th October 2016	28	35
R3	27th October 2016	28	35
R2	27th October 2016	31	35
R2	27th October 2016	31	35
R4	27th October 2016	26	35
R4	27th October 2016	26	35
R8	27th October 2016	24	35
R8	27th October 2016	25	35
R17	27th October 2016	23	35
R17	27th October 2016	22	35

Receiver	Date	Predicted Site Noise Level Contribution	Operational Criteria (dB(A))
EPL ID		LAeq, 15 minute (dB(A))	daytime
16	16th August 2016	22	41
6	16th August 2016	29	35
2	16th August 2016	24	39

Peppertree Quarry Environmental Monitoring Report

5	16th August 2016	32	35
16	17th August 2016	25	41
6	17th August 2016	30	35
2	17th August 2016	25	39
5	17th August 2016	30	35
16	17th August 2016	25	41
6	17th August 2016	31	35
2	17th August 2016	26	39
5	17th August 2016	32	35

Receiver	Date	Site Noise Level Contribution	Operational Criteria (dB(A))
EPL ID		LA1, 1 minute (dB(A))	evening
5	17 th August 2016	34	45
5	17 th August 2016	33	45
5	18 th August 2016	21	45
5	18 th August 2016	20	45
6	17 th August 2016	34	45
6	17 th August 2016	34	45

Receiver	Date	Site Noise Level Contribution	Operational Criteria (dB(A))
EPL ID		LAeq, 15 minute (dB(A))	evening
2	18th August 2016	32	35
5	18th August 2016	21	35
2	18th August 2016	33	35
2	18th August 2016	24	35
5	18th August 2016	20	35
6	17th August 2016	34	35
5	17th August 2016	34	35
6	17th August 2016	34	35
5	17th August 2016	33	35

Receiver	Date	Predicted Site Noise Level Contribution	Operational Criteria (dB(A))
EPL ID		LAeq, 15 minute (dB(A))	daytime
16	10th May 2016	30	41
6	10th May 2016	31	35
2	10th May 2016	31	39
5	10th May 2016	26	35
16	10th May 2016	23	41

Peppertree Quarry Environmental Monitoring Report

6	11th May 2016	33	35
2	11th May 2016	28	39
5	11th May 2016	25	35
16	11th May 2016	23	41
6	11th May 2016	32	35
2	11th May 2016	23	39
5	11th May 2016	26	35
16	11th May 2016	20	41

Receiver	Date	Site Noise Level Contribution	Operational Criteria (dB(A))
EPL ID		LA1, 1 minute (dB(A))	evening
2	12 th May 2016	28	45
5	12 th May 2016	24	45
5	12 th May 2016	30	45
16	12 th May 2016	26	45
6	12 th May 2016	26	45

Receiver	Date	Site Noise Level Contribution	Operational Criteria (dB(A))
EPL ID		Leq, 15 minute (dB(A))	evening
2	11th may 2016	28	35
16	11th may 2016	24	35
5	12th May 2016	26	35
6	12th May 2016	30	35
5	12th May 2016	26	35

Receiver	Date	Predicted Site Noise Level Contribution	Operational Criteria (dB(A))
EPL ID		LAeq, 15 minute (dB(A))	daytime
16	2 nd February 2016	24	41
6	2 nd February 2016	22	35
2	2 nd February 2016	22	39
5	2 nd February 2016	21	35
16	3rd February 2016	25	41
6	3rd February 2016	24	35
2	3rd February 2016	17	39
5	3rd February 2016	19	35
16	3rd February 2016	31	41
6	3rd February 2016	28	35
2	3rd February 2016	20	39
5	3rd February 2016	18	35

Peppertree Quarry Environmental Monitoring Report

Receiver	Date	Site Noise Level Contribution	Operational Criteria (dB(A))
EPL ID		Leq, 15 minute (dB(A))	evening
2	3rd February 2016	27	35
5	3rd February 2016	34	35
2	3rd February 2016	26	35
5	3rd February 2016	33	35
6	4th February 2016	28	35
5	4th February 2016	31	35

Receiver	Date	Site Noise Level Contribution	Operational Criteria (dB(A))
EPL ID		LA1, 1 minute (dB(A))	evening
2	4th February 2016	29	45
2	4th February 2016	28	45
5	4th February 2016	31	45
5	4th February 2016	38	45
5	4th February 2016	36	45
6	4th February 2016	29	45

Receiver	Date	Predicted Site Noise Level Contribution	Operational Criteria (dB(A))
EPL ID		LAeq, 15 minute (dB(A))	daytime
16	20 th October 2015	<32	41
6	20 th October 2015	<30	35
2	20 th October 2015	<30	39
5	20 th October 2015	<30	35
16	21st October 2015 th	<31	41
6	21st October 2015 th	<30	35
2	21st October 2015 th	<30	39
5	21st October 2015 th	<30	35

Receiver	Date	Site Noise Level Contribution	Operational Criteria (dB(A))
EPL ID		Leq, 15 minute (dB(A))	evening
2	21st October 2015 th	<30	35
5	21st October 2015 th	31	35
2	21st October 2015 th	<33	35

Peppertree Quarry Environmental Monitoring Report

Receiver	Date	Site Noise Level Contribution	Operational Criteria (dB(A))
EPL ID		LA1, 1 minute (dB(A))	evening
2	21st October 2015 th	<30	45
5	21st October 2015 th	<33	45
2	21st October 2015 th	<35	45

Receiver	Date	Predicted Site Noise Level Contribution	Operational Criteria (dB(A))
EPL ID		LAeq, 15 minute (dB(A))	daytime
16	21 st July 2015	<22	41
6	21 st July 2015	<33	35
2	21 st July 2015	<27	39
5	21 st July 2015	<26	35
16	22 nd July 2015	<27	41
16	22 nd July 2015	<29	41
2	22 nd July 2015	<35	39
2	22 nd July 2015	<32	39
2	22 nd July 2015	<28	39
6	22 nd July 2015	<30	35
6	22 nd July 2015	<31	35
5	22 nd July 2015	<22	35
5	22 nd July 2015	<22	35

Receiver	Date	Site Noise Level Contribution	Operational Criteria (dB(A))
EPL ID		Leq, 15 minute (dB(A))	evening
6	22nd July 2015	<33	35
6	23 rd July 2015	<25	35
5	23 rd July 2015	<30	35
16	23 rd July 2015	<31	35
16	23 rd July 2015	<30	35

Receiver	Date	Site Noise Level Contribution	Operational Criteria (dB(A))
EPL ID		LA1, 1 minute (dB(A))	evening
6	23 rd July 2015	<33	45
6	23 rd July 2015	<25	45
5	23 rd July 2015	<35	45
16	23 rd July 2015	<36	45
16	23 rd July 2015	<36	45

Receiver	Date	Predicted Site Noise Level	Operational Criteria (dB(A))
----------	------	----------------------------	------------------------------

Peppertree Quarry Environmental Monitoring Report

		Contribution	
EPL ID		LAeq, 15 minute (dB(A))	daytime
16	8th April 2015	<30	41
6	8th April 2015	<30	35
2	8th April 2015	<30	39
5	8th April 2015	<30	35
16	9th April 2015	<30	41
16	9th April 2015	<30	41
2	9th April 2015	<30	39
2	9th April 2015	<30	39
6	9th April 2015	<30	35
5	9th April 2015	<30	35

Receiver	Date	Site Noise Level Contribution	Operational Criteria (dB(A))
EPL ID		Leq, 15 minute (dB(A))	evening
2	10 th April 2015	<30	35
5	10 th April 2015	31	35
6	10 th April 2015	<30	35
16	10 th April 2015	<30	35

Receiver	Date	Site Noise Level Contribution	Operational Criteria (dB(A))
EPL ID		LA1, 1 minute (dB(A))	evening
2	10 th April 2015	<30	45
5	10 th April 2015	39	45
6	10 th April 2015	<30	45
16	10 th April 2015	<30	45

Receiver	Date	Site Noise Level Contribution	Operational Criteria (dB(A))
EPL ID		LAeq, 15 minute (dB(A))	daytime
16	3rd February 2015	28	41
6	3rd February 2015	25	35
2	3rd February 2015	25	39
5	3rd February 2015	27	35
2	4 th February 2015	29	39
2	4 th February 2015	29	39
5	4 th February 2015	27	35
5	4 th February 2015	27	35
6	4 th February 2015	<25	35
6	4 th February 2015	<25	35
16	4 th February 2015	32	41
16	4 th February 2015	32	41
Receiver	Date	Site Noise Level Contribution	Operational Criteria (dB(A))

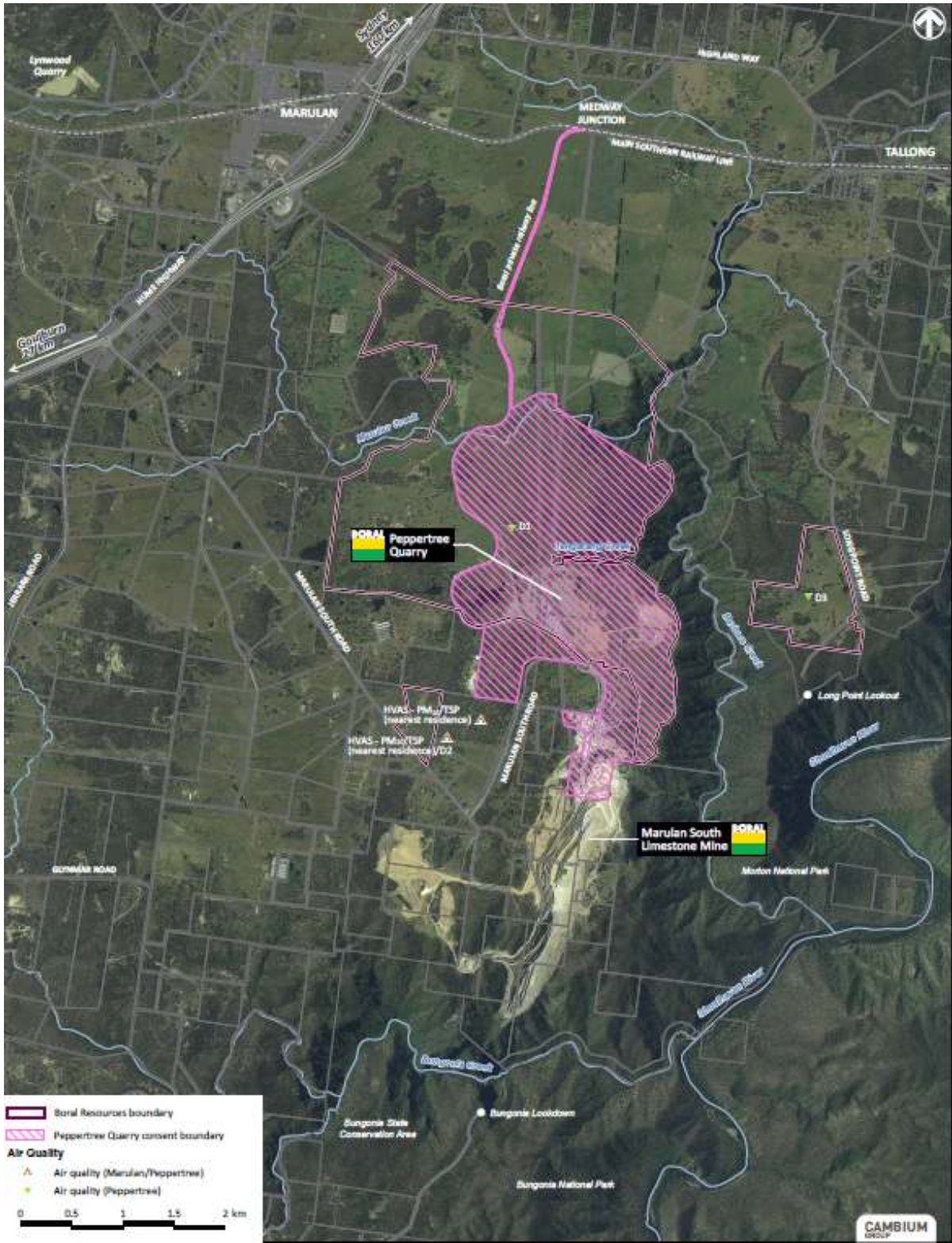
Peppertree Quarry Environmental Monitoring Report

EPL ID		Leq, 15 minute (dB(A))	evening
2	4th February 2015	28	35
2	4th February 2015	25	35
5	5th February 2015	<25	35
5	5th February 2015	<25	35
6	5th February 2015	<25	35
6	5th February 2015	<25	35
16	4 th February 2015	28	35
16	5 th February 2015	29	35

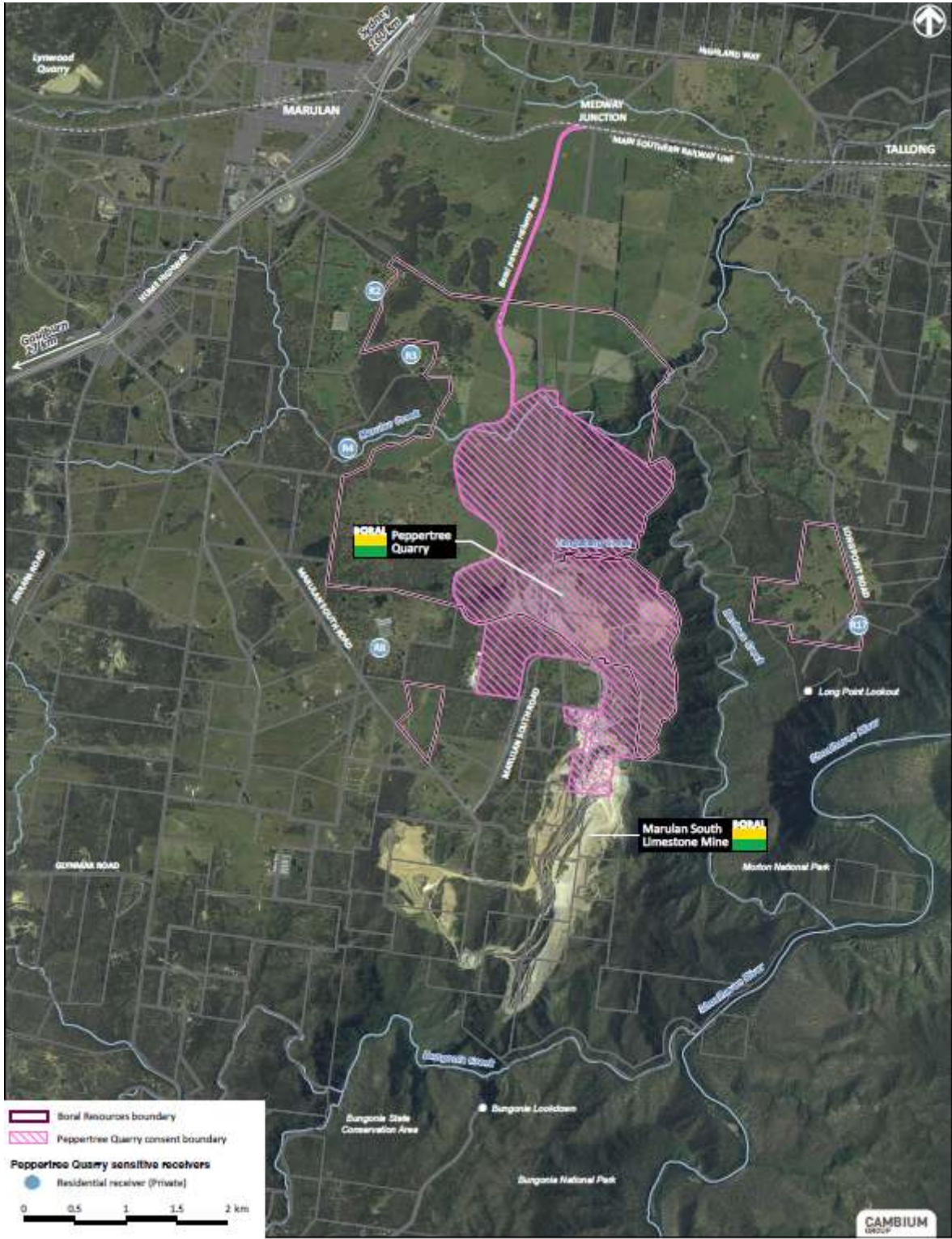
Receiver	Date	Site Noise Level Contribution	Operational Criteria (dB(A))
EPL ID		LA1, 1 minute (dB(A))	evening
2	4 th February 2015	31	45
2	4 th February 2015	27	45
5	5 th February 2015	29	45
5	5 th February 2015	27	45
6	5 th February 2015	27	45
6	5 th February 2015	27	45
16	4 th February 2015	33	45
16	5 th February 2015	33	45

Peppertree Quarry Monitoring Locations.

Deposited Dust, TSP and PM10 Monitoring Locations



Noise Monitoring Locations



Blast Monitoring Locations

