

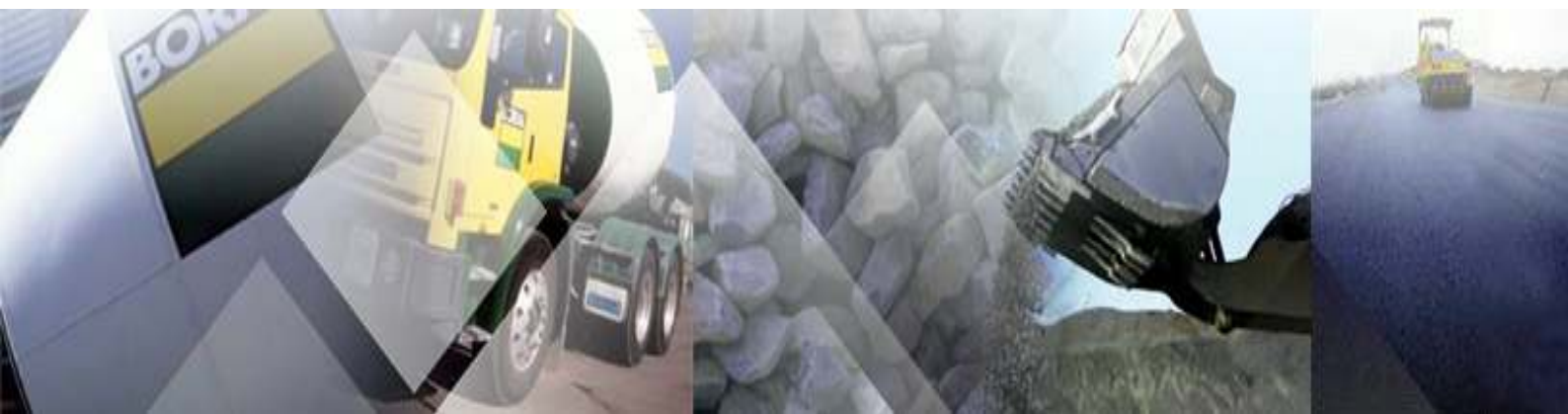


Build something great™

Pollution Incident Response Management Plan

PEPPERTREE QUARRY

Version Ten: November 2018



DOCUMENT CONTROL SHEET

Rev.	Date	Prepared by	Approved By	Revision Details
01	20 Aug 2012	Rod Johnson	Rod Johnson	Document Created
02	8 Oct 2012	Sharon Makin	Rod Johnson	Updated site reference map Updated staff contact details Added quantities of substances stored Updated PIRMP response actions
03	9 May 2013	Nathan Jeffery / Sharon Makin	Rod Johnson	Document control sheet added Format Changes Changed & Added additional maps Updated staff contact details
04	September 2014	Sharon Makin	Rod Johnson	Updated staff contact details Updated PIRMP response actions Added Incident #11
05	September 2015	Sharon Makin	Rod Johnson	Added Scalp materials Added Incident #12
06	20 June 2016	Sharon Makin	Rod Johnson	Reviewed following Drill No change required
07	June 2017	Sharon Makin	Rod Wallace	updated to include recommendations from Drill
08	November 2017	Sharon Makin	Rod Wallace	updated to include incident #12
09	July 2018	Sharon Makin	Angus Shedden	reviewed following PIRMP Drill July 2018 updated to include incident #13
10	November 2018	Sharon Makin	Angus Shedden	changed Boral contact Rod Wallace to Rod Wallace

Current rev	date implemented	PIRMP test Schedule	Date for next review
03	9 May 2013	12 months	9 May 2014
04	September 2014	12 months	September 2015
05	September 2015	12 months	September 2016
06	June 2016	12 months	June 2017
07	June 2017	12 months	June 2018
08	November 2017	7 months	June 2018
09	July 2018	12 months	July 2019
10	November 2018	8 months	July 2019

TABLE OF CONTENTS

1.	PURPOSE.....	4
2.	LEGISLATIVE REQUIREMENTS.....	4
3.	DEFINITION OF A POLLUTION EVENT.....	4
4.	SCOPE	6
5.	POTENTIAL POLLUTING SUBSTANCES.....	6
6.	ROLES AND RESPONSIBILITIES.....	10
7.	INTERNAL POLLUTION INCIDENT REPORTING.....	11
8.	EXTERNAL POLLUTION INCIDENT REPORTING.....	12
9.	POLLUTION INCIDENT AUTHORITY CONTACT LIST.....	13
10.	INCIDENT RESPONSE TRAINING.....	14
11.	PIRMP AUDIT.....	15
12.	PIRMP REVIEW.....	15
12.1	EVENT BASED.....	15
12.2	TIME BASED.....	15
	APPENDIX 1: RISK ASSESSMENT ON POTENTIAL IMPACTS...	16
	APPENDIX 2: PIRMP RESPONSE ACTIONS.....	19
	APPENDIX 3: PEPPERTREE QUARRY LOCATION MAP.....	31
	APPENDIX 4: PEPPERTREE QUARRY REFERENCE MAP.....	32
	APPENDIX 5: PEPPERTREE QUARRY AFFECTED AREA MAP...	33
	APPENDIX 6: POLLUTION INCIDENT NOTIFICATION LOG.....	34

1. PURPOSE

The purpose of the Peppertree Quarry Pollution Incident Response Plan is to:

- Provide direction to the staff at Peppertree Quarry in responding to pollution incidents at the Peppertree operations;
- Ensure timely communication about a pollution incident is provided to staff at the premises, the Environment Protection Authority (EPA), other relevant authorities specified in the Protection of the Environment Legislation Amendment Act (POELA Act) (including Goulburn Mulwaree Council, NSW Ministry of Health, Work Cover NSW, and Fire and Rescue NSW) and persons outside the operations who may be affected by the impacts of a pollution incident;
- Minimise and control the risk of a pollution incident at Peppertree Quarry by identifying key risks and planned actions to minimise and manage those risks;
- Detail the training requirements for this plan, identifying persons responsible for implementing it, and ensuring that the plan is regularly tested for accuracy, currency and suitability.

2. LEGISLATIVE REQUIREMENTS

The specific requirements for a PIRMP are set out in Part 5.7A of the POEO Act and the Protection of the Environment Operations (General) Regulation 2009 (POEO(G) Regulation). In summary, this provision requires the following:

- All holders of environment protection licences must prepare a pollution incident response management plan (section 153A, POEO Act).
- The plan must include the information detailed in the POEO Act (section 153C) and be in the form required by the POEO(G) Regulation (clause 98B).

- Licensees must keep the plan at the premises to which the environment protection licence relates (section 153D, POEO Act).
- Licensees must test the plan in accordance with the POEO(G) Regulation (clause 98E).
- if a pollution incident occurs in the course of an activity so that material harm to the environment is caused or threatened, licensees must immediately implement the plan (section 153F, POEO Act)

3. DEFINITION OF ‘POLLUTION INCIDENT’

The definition of a pollution incident is:

“pollution incident means an incident or set of circumstances during or as a consequence of which there is or is likely to be a leak, spill or other escape or deposit of a substance, as a result of which pollution has occurred, is occurring or is likely to occur. It includes an incident or set of circumstances in which a substance has been placed or disposed of on premises, but it does not include an incident or set of circumstances involving only the emission of any noise.”

A pollution incident is required to be notified if there is a risk of ‘material harm to the environment’, which is defined in section 147 of the POEO Act as:

a) harm to the environment is material if:

- it involves actual or potential harm to the health or safety of human beings or to ecosystems that is not trivial, or
- it results in actual or potential loss or property damage of an amount, or amounts in aggregate, exceeding \$10,000 (or such other amount as is prescribed by the regulations), and

b) loss includes the reasonable costs and expenses that would be incurred in taking all reasonable and practicable measures to prevent, mitigate or make good harm to the environment.

Peppertree Quarry is now required to report pollution incidents immediately to the EPA, NSW Health, Fire and Rescue NSW, WorkCover NSW and the local council.

4. SCOPE

This PIRMP must be followed by employees, contractors and visitors of Peppertree Quarry, to assist in the early response to and reporting of a pollution incident.

5. POTENTIAL POLLUTING SUBSTANCES

The main hazards to human health and the environment at Peppertree Quarry are included in the following table.

LIST OF POLLUTING SUBSTANCE STORAGES/USES AT SITE: INITIAL ASSESSMENT (all Chemicals listed in this sheet are to be subjected to a risk assessment)							
Site Name: Peppertree Quarry					Responsible Person: Angus Shedden		Date: June 2018
Name / description	Covered under Haz Chemicals/MSDS?	Amount stored	Location of storage	Map reference	Need for early warning ¹	Current controls	See Risk Ass & PIRMP Response Action (see Below)
CHEMICALS/FUELS/LUBRICANTS (raw materials and products which can cause pollution)							
Diesel	Class 3	100 000 ltrs	Diesel Storage Area at train load out		N/A	<ul style="list-style-type: none"> • Bunding • PMP • Training • Spill Kits • SOP • Inductions • Fire Fighting Equipment • Security • Workcover licence 	Incident #1-3
Oils/Solvents	Class 3	Packaged goods up to 50 ltrs	Oil Storage Area		N/A	<ul style="list-style-type: none"> • Bunding • PMP • Training • Flammable Cabinet • Spill Kits • Inductions • Fire Fighting Equipment • Security 	Incident #4
Lubricants, Gases	Class 2	Variable	Maintenance Area		N/A	<ul style="list-style-type: none"> • Fire Extinguishers • Concrete Floor • Enclosed Shed • Containment 	Incident #4

¹ Early warnings relate to informing neighbours who may be affected by the emission of this substance. If this substance is of a type and quantity which may reach neighbours then early warning assessment of actions is required to be undertaken.

						Cages and Cabinets	
Oils/Fuel	Class 3	Variable	Plant and Equipment (Workshop area)		N/A	<ul style="list-style-type: none"> • PMP • Training • Spill Kits • SOP • Inductions • Fire Fighting Equipment • Security 	Incident #4
MATERIALS (eg stockpiles, silos, bulk solids etc)							
Aggregate Stockpiles	Hazardous Substance GHS category 2 (Silica content)	Variable	Dedicated on site		N/A	<ul style="list-style-type: none"> • Water sprays • Water Cart • Maintain manageable levels • Security • Occupational hygiene monitoring 	Incident #5
Scalp and sand Stockpiles	N/A	Variable	Dedicated on site		N/A	<ul style="list-style-type: none"> • Inspection • Drainage • Bunding • Stability and height management 	Incident #12
AQUEOUS (eg dams, wastewater tanks, other water storage area)							
Water Storage Dam (Sediment)	N/A	Variable	site		N/A	<ul style="list-style-type: none"> • Continue to use for dust suppression • Ensure pumps are maintained through scheduled maintenance • Discharge monitoring • Regular inspection 	Incident #6

Storm Water Drains	N/A	Variable	Site		N/A	<ul style="list-style-type: none"> • Direction of water to Dam 1 • Earthen Berms • Audits and Inspections 	Incident #6
SUBSTANCES IN PROCESSES (substances which could be emitted from operational process i.e. treatment plants, vehicles etc)							
Name / description	Covered under Haz Chemicals/MSDS?	Amount stored	Location of storage	Map reference	Need for early warning²	Current controls	See Risk Ass & PIRMP Response Action (see Below)
Mobile Plant (onsite) BORAL	Class 3	Up to 10 MP on site	Dedicated on site		N/A	<ul style="list-style-type: none"> • Spill Kits • Pre start checks • PMP • Training 	Incident #7
Mobile Plant Contractor/visitor	Class 3	Variable	Variable Locations		N/A	<ul style="list-style-type: none"> • Spill Kits • Training • Inductions 	Incident #8
Car Parking up to 20 vehicles	Class 3	Variable	Site Office		N/A	<ul style="list-style-type: none"> • Spill Kits • Training 	Incident #9
Traffic Areas (dust, chem. leaks & loss)	Class 3	N/A	Dedicated on site		N/A	<ul style="list-style-type: none"> • Training • Water cart • Spill Kits 	Incident #10
Flammable materials – infrastructure / tyres / belts / flammable goods	N/A	N/A	Site process	site	N/A	<ul style="list-style-type: none"> • Regular scheduled maintenance • Emergency response training • Fire fighting equipment • Annual audits 	Incident # 11

² Early warnings relate to informing neighbours who may be affected by the emission of this substance. If this substance is of a type and quantity which may reach neighbours then early warning assessment of actions is required to be undertaken.

6. ROLES AND RESPONSIBILITIES

Position	Responsibility
<i>Employees and Contractors</i>	<p>Following the procedures outlined in the PIRMP and related documents</p> <p>Immediately alerting Supervisor or Team Leader of any environmental incidents or near-misses.</p>
<i>Team Leaders / Front Line Supervisors</i>	<p>Following the procedures outlined in the PIRMP and related documents</p> <p>Immediately alerting Site/Quarry Manager or, in case of their unavailability, Environmental Representative or Environment Manager of any potentially material environmental incidents or near-misses.</p> <p>Conducting incident investigations.</p>
<i>Site / Operations Manager and/or Site Environmental Coordinator and/or Environment Manager</i>	<p>Authorisation of the PIRMP</p> <p>Administration, maintenance and implementation of the PIRMP</p> <p>Assessing whether the incident has caused or threatens “material environmental harm” and, if so, immediately notifying all Appropriate Regulatory Authorities.</p> <p>Ensuring that investigations are undertaken to a level corresponding to the level of risk and impact.</p>

The Peppertree Quarry Emergency Management Plan identifies a number of roles that are activated in response to any emergency.

Boral staff are trained in these roles and it is the responsibility of the “incident controller” (site supervisor) to delegate these roles at the time of an incident.

PIRMP incidents will be managed in the same way.

The roles include ...

Incident Controller

Communication Controller

Emergency escort

First aid attendant and

Assembly area officer

Deputy Incident Controller

Fire pump operator

Site Guard

7. INTERNAL POLLUTION INCIDENT REPORTING

Any pollution incident satisfying the **material harm** threshold must be immediately reported to relevant statutory authorities by either the Site/Operations Manager, or Environment Manager.

In cases where “material harm” level cannot be immediately assessed or insufficient information comes to hand on the severity of the incident, the general advice is to err on the side of caution and notify the Relevant Authorities with a qualification that the situation could not yet be fully assessed.

Until further notice the following procedure needs to be followed:

1. When a pollution incident occurs, a person who has become aware of it must immediately bring it to the attention of his/her immediate Supervisor or Manager
2. If necessary, first ring “ 000 ” for Emergency Services
- 3 At least one of the following BCM personnel must be contacted **immediately**:

Name	Function	Phone number	Mobile number
Angus Shedden	Operations Quarry Manager (Peppertree)	4841 1701	0401 894 513
Sharon Makin	Environmental Advisor	02 4841 1701	0401 894 185
Rod Johnson	Environment Operations Manager –	02 9033 5308	0401 896 198
Rod Wallace	Regional Environmental Manager – NSW / ACT	R02 9033 5305	0411 659 271

4. Both Angus and Sharon can be contacted on a 24 hour basis
5. Angus Shedden or in case of his unavailability one of the Senior Management personnel listed above, is to **immediately** notify all Appropriate Regulatory Authorities specified in Section 9.
6. In borderline situations, where the exceedance of the trigger level of “material harm” of a pollution incident may not be clear, a quick assessment including consultation with Boral environmental personnel should be undertaken to help the decision whether to notify or not.

7. Boral's Senior Management must be informed promptly of the fact of immediate notification to the Authorities. This includes environmental personnel listed above, as well as James Collings, David Bolton, Greg Price and Richard Strauch.

Notification should be as below....

- Angus Shedden to contact Rod Wallace and advise
- Angus to contact James Collings and advise
- James Collings to contact David Bolton and advise
- David Bolton to contact Greg Price and advise
- Rod Wallace to discuss incident with Greg Price and David Bolton and advise Angus Shedden if the incident is notifiable
- If determined to be notifiable – Angus Shedden to advise the relevant authorities

8. EXTERNAL POLLUTION INCIDENT REPORTING

As the legislation requires that notification must be done immediately upon becoming aware of the pollution incident, it is unlikely that a detailed picture will be available for reporting. Notwithstanding, it seems that some of the Government Authorities prepared a detailed questionnaire which is being filled at the time of this initial notification. Under the stress of incident handling it could be easy to provide a hasty, inaccurate estimate of the situation when answering these questions.

Therefore, the notification should be restricted to the facts known and nothing should be assumed or guessed. The details will be provided to the asking Authority later when more information comes to hand.

The initial notification should include as much of the following information (if known) as possible:

- location and time of the pollution incident
- type of the incident (spill, fire, unlicensed harmful discharge, etc)
- assessed level of incident gravity: "it seems to be..." (e.g. "a relatively minor spill"; "major fire", "explosion limited to one building", etc.)
- whether the Emergency Services have been required to attend.

Unless known for a fact, the answers to other questions should be politely deferred until a better assessment of the situation can be made.

The Boral person who is responsible for notifying the Authorities (Site/Operations Manager or Environment Manager) about the incident must prepare a Notification Log (a suitable form is attached) with the details of time of notifications and the persons who took to the call. The Authorities are expected to log the calls but early indications are that this is not always the case.

Notification of all Appropriate Government Authorities (at least 5 entities) may take considerable time. Delays may be experienced connecting to the right person or no contact may be possible after hours. All such instances should be recorded in the Notification Log.

9. POLLUTION INCIDENT AUTHORITY CONTACT LIST

Government Authority - compulsory notifications	Emergency notification phone number
EPA – Environment Line	131 555
Police & Ambulance	000
Fire and Rescue NSW (FRNSW)	1300 729 579
Goulburn Mulwaree Council	(02) 4823 4444
Public Health Unit (Camperdown) – Sydney South West AHS.	HealthLink (24 hr)- 1800 063 635 Head Office- Camperdown – 9515 9467
WorkCover Authority of NSW	131050 Company ABN if asked: 51 000 756 507
Government Authority - ring if relevant	Emergency notification phone number
Roads and Maritime Services (road spills)	132 701
NSW Office of Water	8838 7885
Bush Fire Control Officer	1800 049 933
Poisons Information Centre	131 126
Department of Trade and Investment	

Endeavour Energy	131 003
National Parks and Wildlife (Bungonia office)	02 48444277

Should the incident be limited to the discharge of sediments or discolored water to Tangarang creek only the Authorities highlighted in yellow need to be contacted. It has been determined that there is no human health impact as a result of such an incident.

Communication with the local community may also be undertaken depending on the circumstances of the pollution incident. For most incidents identified, there is no impact on the local residential community. Incidents #5 and #11 have the potential to be visible to the residents. Depending upon the prevailing winds, smoke or dust could impact if the incident is significant. At the time, the community would be advised.

The following residents would be advised....

Rosemary and Malcolm Turner

Barry and Emily Armitt

Tino Foti (Tegan Rups)

Charles Mendel

Josh and Penny Cooper

Frank Bortoli

Steve and Annette Pace

Pat and Bridgette Mulligan

David Sali

Nick Levy

Russell Montgomery

Hilary Myers

Members of the CCC

Peppertree Quarry would consider the following options for providing Early Warning and ongoing information to the community on pollution incidents:

- Direct phone contact with any local residents directly impacted by the pollution incident
- Letter Box drops of incident information and site contacts to local residents impacted by the pollution incident (refer Appendix 5)
- The inclusion of incident details within the relevant Quarry Community Newsletter

The Stakeholder Relations Manager can assist in the process of communicating with the community, as per the Stakeholder Engagement Plan for the site.

10. INCIDENT RESPONSE TRAINING

Peppertree Quarry will implement the Pollution Incident Response Management Plan by training or providing information to employees and contractors in relevant areas of the Plan.

Training or information will be provided on the following;

- The contents and intent of this PIRMP,
- The roles and responsibilities of site staff in relation to this PIRMP
- Spill response procedures;
- General environmental awareness; and / or
- Hazardous materials awareness.
- Emergency response plan

11. INCIDENT RESPONSE EQUIPMENT

Details of the incident response equipment available are outlined in the site's Emergency response plan and include Spill kits, earthmoving equipment and firefighting equipment.

Regular reviews are conducted of the Spill kits with an annual review of the firefighting capabilities with 6 monthly reviews of the equipment.

12. PIRMP AUDIT

The objectives of an audit are to maintain compliance with this plan. Internal audits of this Plan will be undertaken every 3 years.

Routine testing of the plan will be conducted annually, and can be completed through the following methods:

- Simulated environmental emergency, or
- Desktop simulations.

13. PIRMP REVIEW

Revisions are to be coordinated by the Site Manager and Environmental Representative.

The objectives of a review are:

- To maintain compliance with the statutory requirements, and
- To identify opportunities for improvement in the Plan, and reduce the risk to human health and the environment

13.1. EVENT BASED

Events which may trigger a review of this Plan or its associated documents include:

- Within 1 month of reporting to the nominated parties in accordance with the plan, after a pollution incident, or
- Modification/Improvement to the system

13.2. TIME BASED

Peppertree Quarry will review this management plan routinely every 12 months. The Plan review will include:

- This Document, and
- Legislation, Approval and Licence changes.

APPENDIX 1.

RISK ASSESSMENT on POTENTIAL IMPACTS

Hazard and Likelihood Risk Assessment and Corrective Control Measures									
Site: Peppertree Quarry				Responsible Person: Peppertree Quarry Manager			Review Date: November 2017		
Name / ref of pollutant/ chemicals	Description of Hazard / Incident leading to hazard	Consequence	Likely hood	Risk	Impact on neighbours ³	Control Measures Corrective Action Coverage under other Plans	Responsible person	Action date	
Diesel	Incident #1 Catastrophic failure of one/both above ground tanks	2	1	L2	N/A	Consequence: (minor): Failure resulting in loss of all or substantial volume of tanks would be captured entirely by existing primary bund with no release to soil or water. Likelihood: (practically impossible): Due to location within bund, damage to tanks is unlikely to occur from external equipment. In addition tanks are maintained in good structural integrity with low risk of failure through corrosion.	As per PIRMP action plan	When required	
	Incident #2 Loss of diesel outside bund during refuelling/fuelling operations.	2	3	M6	N/A	Consequence: (minor): Failure resulting in loss/leakage from fuelling or re-fuelling from hose, nozzle or plant/equipment would be captured by a secondary bund or spill kill with minimal release to soil. Likelihood: (likely): Due to location within the bund an incident while re-fuelling and fuelling is likely to occur on some occasions. Hoses and refuelling equipment are maintained with low risk of failure.	As per PIRMP action plan	When required	
	Incident #3 Loss of fuel within bunded area with leaking or open	2	1	L1	N/A	Consequence: (minor): Failure resulting in loss of all or substantial volume of tanks would be captured entirely by primary bund with minimal release to soil.	As per PIRMP action plan	When required	

³ If the incident may impact on neighbours then it will need to trigger the early warnings assessment and actions

	drain valve					Likelihood: (practically impossible): Drain valve, hoses and refuelling equipment are maintained in good structural integrity with low risk of failure The drain valve is locked at all times.		
Oils/Solvents	Incident #4 Loss of oils solvents inside bund during delivery and or use	2	1	L1	N/A	Consequence: (minor): Failure resulting in loss of oils/solvents from packaged goods would be captured entirely by existing primary bund with no release to soil or water. Likelihood :(practically impossible): Due to location within the bund, spillage during delivery and use is unlikely to occur. In addition hoses and decanting equipment are maintained in good structural integrity with low risk of failure.	As per PIRMP action plan	When required
Aggregate stockpiles	Incident #5. Excessive airborne dust from stockpiled material	2	1	L2	Y	Consequence: (Minor): Excessive dust from stockpile during high winds causing nuisance to surrounding area. Likelihood :(practically impossible): Stockpiles are maintained to a manageable level on a monthly basis. Use of water sprinklers and water cart onsite during windy periods.	As per PIRMP action plan	When required
Sediment Dams	Incident #6 Catastrophic failure of one or more sediment dams releasing large volumes of water into on-site and off-site water courses (i.e creek).	3	2	M6	N/A	Consequence: (moderate): Catastrophic failure of one or more sediment dams are likely to result in off-site impacts to water courses which would predominantly reduce water quality over a short period of time. As such, impact to the environment/human health is not considered to be significant. Likelihood: (unlikely): Dams are frequently monitored and inspected for levels and integrity. Risk Assessment = Moderate Vs Unlikely = M(6) Note: For PIRMP purposes overflow events during extreme wet weather will be reported under POEO Licence obligations and not Immediate Reporting.	As per PIRMP action plan	When required
Mobile Plant	Incident #7 Mobile plant, hydraulic hose or fuel tank failure	2	2	M4	N	Consequence: (minor): Failure from fuel tank or hydraulic hoses would be maintain to a small localised area on site. Likelihood: (unlikely): Hose or fuel tank failure from mobile plant would be minimal as prestart and regular maintenance programs are in place to capture and prevent such occurrences. Spills kits also maintain and available in various areas.	As per PIRMP action plan	When required
Mobile plant/ Contractor, Visitor	Incident #8 Mobile plant, hydraulic hose or	2	2	M4	N	Consequence: (minor): Failure from fuel tank or hydraulic hoses would be maintain to a small localised area on site.	As per PIRMP action plan	When required

	fuel tank failure					Likelihood: (unlikely): Hose or fuel tank failure from mobile plant would be minimal as prestart and regular maintenance programs are in place to capture and prevent such occurrences. Spills kits also maintain and available in various areas. Inductions for all contractors demonstrating their accountabilities and responsibilities for reporting environmental incidents.		
Car Park	Incident #9 Ruptured fuel tank	1	1	L1	N	Consequence: (minor): Failure from fuel tank or hydraulic hoses would be maintain to a small localised area on site. Likelihood :(unlikely): Hose or fuel tank failure from employee or visitor car would be minimal. Car park area is fully sealed. Spill kits also maintain and available in various areas	As per PIRMP action plan	When required
Traffic areas (dust)	Incident # 10 Emitted surface dust from mobile plant	2	2	M4	Y	Consequence: (minor): Dust created from continuous mobile plant operations across site Likelihood :(unlikely): Main areas watered with water cart in high wind conditions	As per PIRMP action plan	When required
Flammable process equipment	Incident # 11 Emitted smoke as a result of fire				Y	Consequence: (minor) smoke would be visible but due to distance to the nearest receivers would have little impact Likelihood: (unlikely) fire fighting controls are in place in the operations and staff have been trained in fire fighting response. Maintenance schedule in place to ensure process and fire fighting equipment are in good working order. Emergency response training for Boral staff in place including fire response.		
Scalps and fines stockpiles	Incident #12 Catastrophic failure of stockpile releasing large volumes of material into on-site and off-site water courses (i.e creek).	3	2	M6	N/A	Consequence: (moderate): Catastrophic failure of a stockpile is likely to result in off-site impacts to water courses which would predominantly reduce water quality over a short period of time. As such, impact to the environment/human health is not considered to be significant. Likelihood: (unlikely): Stockpiles are frequently monitored and inspected for drainage and integrity. Risk Assessment = Moderate Vs Unlikely = M(6)	As per PIRMP action plan	When required

APPENDIX 2.

PIRMP RESPONSE ACTIONS

Incident No 1

Incident #1	<p>Catastrophic failure of one/both diesel tanks.</p> <p>Actions Required:</p> <ul style="list-style-type: none"> • Contact all relevant people/department (refer to Immediate Reporting Contact Sheet) Who: Quarry Manager • Ensure bunds are capturing full volume of diesel Who: Warden • Ensure bund integrity is sound throughout the entire period of incident (i.e. periodic inspections) Who: Warden • Contact service provider (Caltex No. 1800033111 or Transpacific 02 96007185) to pump-out bund contents Who: Warden • Area to be restricted to Incident Response Personnel Who: Warden • Ensure spill kit available for any release from bund Who: Warden • Prepare external bund with scalp material in event of tank bund failure or lack of capacity Who: Warden • If any release from bund onto unsealed soil/surface water - Environmental Consultants to be engaged to investigate and remediate contamination. Who: HSE • Repair/replace tanks Who: pacific National • Refuel tanks Who: Service Provider • Inspect bund for ongoing serviceability Who: Warden
Alarm raising	<p>Any personnel involved or witnessing incident to report to immediate supervisor and PIRMP actions to be implemented.</p>
Emergency Controller	<ul style="list-style-type: none"> • Shift Supervisor • Call service provider (Quarry Manager or Shift Supervisor) • Spill Kit manager (Supervisor) • Periodic inspections and update reporting of site and bund (Pacific National staff)
Scale of incident	<p>Incident would be restricted to Diesel storage area with minimal external impact, however, potential for bund overflow or failure may result in soil and surface water contamination that will require specialist investigation/remediation.</p>
Evacuate	<p>Only if fire or explosion potential exists. Quarry Manager and any advice provided by Fire Dept as part of attendance after immediate notification. No external evacuation required however internal may be necessary</p>
Communications	<p>Internal:</p> <ul style="list-style-type: none"> • Angus Shedden • Rod Wallace • Rod Johnson &/or Sharon Makin

	<p>External mandatory:</p> <ul style="list-style-type: none"> • Immediate Reporting Contact Sheet to be used <p>External non-mandatory: N/A</p>
Rescuer / respondent + safety checks	As per Site Emergency Plan or Fire Department as part of Immediate Reporting
Rescue + First Aid	As per Site Emergency Plan or Fire Department as part of Immediate Reporting
Clean up and Waste disposal	Service Provider to dispose of diesel and advise on required clean-up. Contaminated soil to be rated externally via consultants or land farmed onsite
Reporting and re-preparedness	<p>See SOPs:</p> <ul style="list-style-type: none"> • Incident Notification SOP GRP-HSEQ-3-02Incident_Reporting_Investigation_and_Action_Management v3.2.pdf • Review of PIRMP • Review of relevant Management plan • Reporting as per Conditions of consent • Reporting as per EPL

Incident No 2

Incident #2	<p>Loss of Fuel (more than 1000L) due to filling and refueling from one/both diesel tanks.</p> <p>Actions Required:</p> <ul style="list-style-type: none"> • Contact all relevant people/department (refer to Immediate Reporting Contact Sheet) Who : Quarry Manager • Ensure bunds are capturing full volume of diesel Who: Warden • Ensure bund integrity is sound throughout the entire period of incident (i.e. periodic inspections) Who: Warden • Contact service provider (Caltex No. 1800033111 or Transpacific 02 96007185) to pump-out bund contents Who: Warden • Area to be restricted to Incident Response Personnel Who: Warden • Ensure spill kit available for any release from bund Who: Warden • If any release from bund onto unsealed soil/surface water - Environmental Consultants to be engaged to investigate and remediate contamination. Who: HSE • Repair/replace tanks Who: Warden • Refuel tanks Who: Warden <p>Inspect bund for ongoing serviceability Who: Warden</p>
Alarm raising	Any personnel involved or witnessing incident to report to immediate supervisor and PIRMP actions to be implemented.
Emergency Controller	<ul style="list-style-type: none"> • Shift Supervisor or Quarry Manager • Call service provider (Quarry Manager or Shift Supervisor)

	<ul style="list-style-type: none"> • Spill Kit manager (Supervisor) • Periodic inspections and update reporting of site and bund (Pacific National)
Scale of incident	Incident would be restricted to Diesel storage area with minimal external impact. However, potential for bund overflow or failure may result in soil and surface water contamination that will require specialist investigation/remediation.
Evacuate	Only if fire or explosion potential exists. Quarry Manager and any advice provided by Fire Dept as part of attendance after immediate notification. No external evacuation required however internal may be necessary
Communications	<p>Internal:</p> <ul style="list-style-type: none"> • Angus Shedden • Rod Wallace • Rod Johnson &/or Sharon Makin <p>External mandatory:</p> <ul style="list-style-type: none"> • Immediate Reporting Contact Sheet to be used <p>External non-mandatory: N/A</p>
Rescuer / respondent + safety checks	As per Site Emergency Plan or Fire Department as part of Immediate Reporting
Rescue + First Aid	As per Site Emergency Plan or Fire Department as part of Immediate Reporting
Clean up and Waste disposal	Service Provider to dispose of diesel and advise on required clean-up.
Reporting and re-preparedness	<p>See SOPs:</p> <ul style="list-style-type: none"> • Incident Notification SOP GRP-HSEQ-3-02Incident_Reporting_Investigation_and_Action_Management v3.2.pdf • Review of PIRMP • Review of relevant Management plan • Reporting as per Conditions of consent • Reporting as per EPL

Incident No 3

Incident #3	<p>Failure of drain valve on bund (where bund contains hydrocarbons, Hazardous substances / Dangerous goods)</p> <p>Actions Required:</p> <ul style="list-style-type: none"> • Contact all relevant people/department (refer to Immediate Reporting Contact Sheet) Who: Warden • Stop flow of hydrocarbons. Shut off operations generating the hydrocarbons Who: Warden • Construct temporary bund wall with scalps or other temporary bunding Who: Warden • Contact service provider (Caltex No. 1800033111 or Transpacific 02 96007185) to pump-out bund contents Who: Warden • Area to be restricted to Incident Response Personnel Who: Warden • Ensure spill kit available for any release from bund. Who: Warden • If any release from bund onto unsealed soil/surface water, impacted material to be moved to the onsite landform for treatment Who: Warden • Repair/replace tanks Who: Warden • Refuel tanks Who: Warden <p>Inspect bund for ongoing serviceability Who: Warden</p>
Alarm raising	Any personnel involved or witnessing incident to report to immediate supervisor and PIRMP actions to be implemented.
Emergency Controller	<ul style="list-style-type: none"> • Angus Shedden or Shift Supervisor – • Call service provider (Angus Shedden or Shift Supervisor) • Spill Kit manager (Supervisor) • Periodic inspections and update reporting of site and bund (Supervisor / Pacific National)
Scale of incident	Incident would be restricted to fuel storage area with minimal external impact. However, potential for bund overflow or failure may result in soil and surface water contamination that will require specialist investigation/remediation.
Evacuate	Only if fire or explosion potential exists. Quarry Manager and any advice provided by Fire Dept as part of attendance after immediate notification. No external evacuation required however internal may be necessary
Communications	<p>Internal:</p> <ul style="list-style-type: none"> • Angus Shedden • Rod Wallace • Rod Johnson &/or Sharon Makin <p>External mandatory:</p> <ul style="list-style-type: none"> • Immediate Reporting Contact Sheet to be used <p>External non-mandatory: N/A</p>
Rescuer / respondent + safety checks	As per Site Emergency Plan or Fire Department as part of Immediate Reporting

Rescue + First Aid	As per Site Emergency Plan or Fire Department as part of Immediate Reporting
Clean up and Waste disposal	Service Provider to dispose of diesel and advise on required clean-up. Contaminated soil to be treated externally via consultants or onsite landfarm.
Reporting and re-preparedness	See SOPs: <ul style="list-style-type: none"> • Incident Notification SOP GRP-HSEQ-3-02Incident_Reporting_Investigation_and_Action_Management v3.2.pdf • Review of PIRMP • Review of relevant Management plan • Reporting as per Conditions of consent • Reporting as per EPL

Incident No 4

Incident #4	<p>Loss off oil/solvents, packaged goods greater than 1000L</p> <p>Actions Required:</p> <ul style="list-style-type: none"> • Contact all relevant people/department (refer to Immediate Reporting Contact Sheet) Who: Warden • Ensure bunds are capturing full volume of oil/solvents Who: Warden • Ensure bund integrity is sound throughout the entire period of incident (i.e. periodic inspections) Who: Warden • Contact service provider (Caltex No. 1800033111 or Transpacific 02 96007185) to pump-out bund contents Who: Warden • Area to be restricted to Incident Response Personnel Who: Warden • Ensure spill kit available for any release from bund Who: Warden • If any release from bund onto unsealed soil/surface water - Environmental Consultants to be engaged to investigate and remediate contamination. Who: Warden • Inspect bund for ongoing serviceability Who: Warden
Alarm raising	Any personnel involved or witnessing incident to report to immediate supervisor and PIRMP actions to be implemented.
Emergency Controller	<ul style="list-style-type: none"> • Angus Shedden or Shift Supervisor • Call service provider (Angus Shedden or Shift Supervisor) • Spill Kit manager (Supervisor) • Periodic inspections and update reporting of site and bund (Supervisor or via audit)
Scale of incident	Incident would be restricted to chemical storage area with minimal external impact. However, potential for bund overflow or failure may result in soil and surface water contamination that will require specialist investigation/remediation.
Evacuate	Only if fire or explosion potential exists. Quarry Manager and any advice provided by Fire Dept as part of attendance after immediate notification. No external evacuation required however internal may be necessary

Communications	<p>Internal:</p> <ul style="list-style-type: none"> • Angus Shedden • Rod Wallace • Rod Johnson &/or Sharon Makin <p>External mandatory:</p> <ul style="list-style-type: none"> • Immediate Reporting Contact Sheet to be used <p>External non-mandatory: N/A</p>
Rescuer / respondent + safety checks	As per Site Emergency Plan or Fire Department as part of Immediate Reporting
Rescue + First Aid	As per Site Emergency Plan or Fire Department as part of Immediate Reporting
Clean up and Waste disposal	Service Provider to dispose of diesel, oil, grease and advise on required clean-up.
Reporting and re-preparedness	<p>See SOPs:</p> <ul style="list-style-type: none"> • Incident Notification SOP GRP-HSEQ-3-02Incident_Reporting_Investigation_and_Action_Management v3.2.pdf • Review of PIRMP • Review of relevant Management plan • Reporting as per Conditions of consent • Reporting as per EPL

Incident No 5

Incident #5	<p>Excessive airborne dust from stockpiled material (failure of water system / operations)</p> <p>Actions Required:</p> <ul style="list-style-type: none"> • Employees, Contractor/Visitor to notify site representative of issue immediately as per induction Who: Warden • Preventative dust suppression measures to be employed Who: Warden • Affected Operations to cease until dust suppression system or alternative controls can be rectified Who: Warden • Contact all relevant people/department (refer to Immediate Reporting Contact Sheet) Who: Warden
Alarm raising	Any personnel involved or witnessing incident to report to immediate supervisor and PIRMP actions to be implemented.
Emergency	<ul style="list-style-type: none"> • Angus Shedden or Shift Supervisor

Controller	<ul style="list-style-type: none"> • Call service provider (Angus Shedden or Shift Supervisor) • Periodic inspections and update reporting of site and dust suppression systems (supervisor)
Scale of incident	Incident would be localised to the area surrounding stockpile area, with minimal external impact.
Evacuate	Only if fire or explosion potential exists. Quarry Manager and any advice provided by Fire Dept as part of attendance after immediate notification. No external evacuation required however internal may be necessary.
Communications	<p>Internal:</p> <ul style="list-style-type: none"> • Angus Shedden • Rod Wallace • Rod Johnson &/or Sharon Makin <p>External mandatory:</p> <ul style="list-style-type: none"> • Immediate Reporting Contact Sheet to be used <p>External non-mandatory: N/A</p>
Rescuer / respondent + safety checks	As per Site Emergency Plan or Fire Department as part of Immediate Reporting
Rescue + First Aid	As per Site Emergency Plan or Fire Department as part of Immediate Reporting
Clean up and Waste disposal	Excess dust to be cleared and disposed in filler dust cells if required
Reporting and re-preparedness	<p>See SOPs:</p> <ul style="list-style-type: none"> • Incident Notification SOP GRP-HSEQ-3-02Incident_Reporting_Investigation_and_Action_Management v3.2.pdf • Review of PIRMP • Review of relevant Management plan • Reporting as per Conditions of consent • Reporting as per EPL

Incident No 6

Incident #6	<p>Failure of one or more sediment dams.</p> <p>Actions Required:</p> <ul style="list-style-type: none"> • Contact all relevant people/department (refer to Immediate Reporting Contact Sheet) Who: Warden • Establish bunded area to retain any further potential discharges Who: Warden • Install pump to remove any remaining water or use water cart if possible Who: Warden • Ensure bund / dam wall integrity is sound throughout the entire period of incident (i.e. periodic inspections) Who: Warden • Contact local neighbours if going to be inundated by rise of water Who: quarry Manager • Area to be restricted to Incident Response Personnel Who: Warden • Water samples to be taken downstream as well as photos to understand disturbance Who: HSE • Contact local contractor to rebuild dams immediately Who: Warden
Alarm raising	Any personnel involved or witnessing incident to report to immediate supervisor and PIRMP actions to be implemented.
Emergency Controller	<ul style="list-style-type: none"> • Angus Shedden or Shift Supervisor • Call service provider (Angus Shedden or Shift Supervisor) • Periodic inspections and update reporting of site and sediment dam structures (Supervisor)
Scale of incident	Catastrophic failure of one or more sediment dams are likely to result in off-site impacts to water courses which would predominantly reduce water quality over a short period of time. As such, impact to the environment/human health is not considered to be significant.
Evacuate	Only if flood potential exists. Quarry Manager and any advice provided by Fire Dept as part of attendance after immediate notification. No external evacuation required however internal may be necessary
Communications	<p>Internal:</p> <ul style="list-style-type: none"> • Angus Shedden • Rod Wallace • Rod Johnson &/or Sharon Makin <p>External mandatory:</p> <ul style="list-style-type: none"> • Immediate Reporting Contact Sheet to be used <p>External non-mandatory: N/A</p>
Rescuer / respondent + safety checks	As per Site Emergency Plan or Fire Department as part of Immediate Reporting
Rescue + First Aid	As per Site Emergency Plan or Fire Department as part of Immediate Reporting

Clean up and Waste disposal	sediment removal and rehabilitation may be required in waterways or adjoining areas. Consultants to be contacted to assist and advise.
Reporting and re-preparedness	See SOPs: <ul style="list-style-type: none"> • Incident Notification SOP GRP-HSEQ-3-02Incident_Reporting_Investigation_and_Action_Management v3.2.pdf • Review of PIRMP • Review of relevant Management plan • Reporting as per Conditions of consent • Reporting as per EPL

Incident No 7

Incident #7	<p>Mobile plant, hydraulic hose or fuel tank failure.</p> <p>Actions Required:</p> <ul style="list-style-type: none"> • Contact all relevant people/department should the potential for harm be present (refer to Immediate Reporting Contact Sheet) <i>Who: Warden</i> • Area to be restricted to Incident Response Personnel <i>Who: Warden</i> • Ensure spill kit available for any release from mobile plant & equipment <i>Who: supervisor</i> • If spill is on hard stand – bund and apply spill kit <i>Who: supervisor</i> • If spill is small onto dirt or rock – bund and apply spill kit – “remediate Product” <i>Who: supervisor</i> • If spill is large onto dirt or rock –bund, apply remediate and remove to onsite landfarm <i>Who: supervisor</i> • If any release from mobile plant onto unsealed soil/surface water is investigated and remediated immediately <i>Who: supervisor</i> • Call service provider to inspect plant & equipment for serviceability <i>Who: supervisor</i>
Alarm raising	Any personnel involved or witnessing incident to report to immediate supervisor and PIRMP actions to be implemented.
Emergency Controller	<ul style="list-style-type: none"> • Angus Shedden or Shift • Call service provider (Angus Shedden or Shift Supervisor) • Spill Kit manager (Supervisor) • Periodic inspections and update reporting of site and equipment (Supervisor)
Scale of incident	Incident would be localised to the area with no external impact.
Evacuate	Only if fire or explosion potential exists. Quarry Manager and any advice provided by Fire Dept as part of attendance after immediate notification. No external evacuation required however internal may be necessary
Communications	Internal: <ul style="list-style-type: none"> • Angus Shedden

	<ul style="list-style-type: none"> • Rod Wallace • Rod Johnson &/or Sharon Makin <p>External mandatory:</p> <ul style="list-style-type: none"> • Immediate Reporting Contact Sheet to be used <p>External non-mandatory: N/A</p>
Rescuer / respondent + safety checks	As per Site Emergency Plan or Fire Department as part of Immediate Reporting
Rescue + First Aid	As per Site Emergency Plan or Fire Department as part of Immediate Reporting
Clean up and Waste disposal	small spills on hard stand areas once absorbed can be bagged and disposed to general waste bin providing there is no liquid present. larger spills to be managed in the onsite landfarm.
Reporting and re-preparedness	See SOPs: <ul style="list-style-type: none"> • Incident Notification SOP GRP-HSEQ-3-02Incident_Reporting_Investigation_and_Action_Management v3.2.pdf • Review of PIRMP • Review of relevant Management plan • Reporting as per Conditions of consent • Reporting as per EPL

Incident No 8

Incident #8	<p>Mobile plant, hydraulic hose or fuel tank failure from contractors / visitors.</p> <p>Actions Required:</p> <ul style="list-style-type: none"> • Contact all relevant people/department should the potential for harm be present (refer to Immediate Reporting Contact Sheet) <i>Who: Warden</i> • Area to be restricted to Incident Response Personnel <i>Who: Warden</i> • Ensure spill kit available for any release from mobile plant & equipment <i>Who: supervisor</i> • If spill is on hard stand – bund and apply spill kit <i>Who: supervisor</i> • If spill is small onto dirt or rock – bund and apply spill kit – “remediate Product” <i>Who: supervisor</i> • If spill is large onto dirt or rock –bund, apply remediate and remove to onsite landfarm <i>Who: supervisor</i> • If any release from mobile plant onto unsealed soil/surface water is investigated and remediated immediately <i>Who: supervisor</i> • Call service provider to inspect plant & equipment for serviceability <i>Who: supervisor</i>
--------------------	---

Alarm raising	Any personnel involved or witnessing incident to report to immediate supervisor and PIRMP actions to be implemented.
Emergency Controller	<ul style="list-style-type: none"> • Angus Shedden or Shift Supervisor • Call service provider (Angus Shedden or Shift Supervisor) • Spill Kit manager (Supervisor) • Periodic inspections and update reporting of site and equipment (Sharon Makin)
Scale of incident	Incident would be localised to the area with no external impact.
Evacuate	Only if fire or explosion potential exists. Quarry Manager and any advice provided by Fire Dept as part of attendance after immediate notification. No external evacuation required however internal may be necessary
Communications	<p>Internal:</p> <ul style="list-style-type: none"> • Angus Shedden • Rod Wallace • Rod Johnson &/or Sharon Makin <p>External mandatory:</p> <ul style="list-style-type: none"> • Immediate Reporting Contact Sheet to be used <p>External non-mandatory: N/A</p>
Rescuer / respondent + safety checks	As per Site Emergency Plan or Fire Department as part of Immediate Reporting
Rescue + First Aid	As per Site Emergency Plan or Fire Department as part of Immediate Reporting
Clean up and Waste disposal	small spills on hard stand areas once absorbed can be bagged and disposed to general waste bin providing there is no liquid present. larger spills to be managed in the onsite landfarm.
Reporting and re-preparedness	<p>See SOPs:</p> <ul style="list-style-type: none"> • Incident Notification SOP GRP-HSEQ-3-02Incident_Reporting_Investigation_and_Action_Management v3.2.pdf • Review of PIRMP • Review of relevant Management plan • Reporting as per Conditions of consent • Reporting as per EPL

Incident No 9

Incident #9	<p>Car Park/ fuel tank failure.</p> <p>Actions Required:</p> <ul style="list-style-type: none"> • Contact all relevant people/department should the potential for harm be present (refer to Immediate Reporting Contact Sheet) <i>Who: Warden</i> • Area to be restricted to Incident Response Personnel <i>Who: Warden</i> • Ensure spill kit available for any release from mobile plant & equipment <i>Who: supervisor</i> • If spill is on hard stand – bund and apply spill kit <i>Who: supervisor</i> • If spill is small onto dirt or rock – bund and apply spill kit – “remediate Product” <i>Who: supervisor</i> • If spill is large onto dirt or rock –bund, apply remediate and remove to onsite landfarm <i>Who: supervisor</i> • If any release from mobile plant onto unsealed soil/surface water is investigated and remediated immediately <i>Who: supervisor</i> • Call service provider to inspect plant & equipment for serviceability <i>Who: supervisor</i>
Alarm raising	<p>Any personnel involved or witnessing incident to report to immediate supervisor and PIRMP actions to be implemented.</p>
Emergency Controller	<ul style="list-style-type: none"> • Angus Shedden or Shift Supervisor • Spill Kit manager (Supervisor)
Scale of incident	<p>Incident would be localised to the area with no external impact.</p>
Evacuate	<p>Only if fire or explosion potential exists. Quarry Manager and any advice provided by Fire Dept as part of attendance after immediate notification. No external evacuation required however internal may be necessary</p>
Communications	<p>Internal:</p> <ul style="list-style-type: none"> • Angus Shedden • Rod Wallace • Rod Johnson &/or Sharon Makin <p>External mandatory:</p> <ul style="list-style-type: none"> • Immediate Reporting Contact Sheet to be used <p>External non-mandatory: N/A</p>
Rescuer / respondent + safety checks	<p>As per Site Emergency Plan or Fire Department as part of Immediate Reporting</p>
Rescue + First Aid	<p>As per Site Emergency Plan or Fire Department as part of Immediate Reporting</p>

Clean up and Waste disposal	small spills on hard stand areas once absorbed can be bagged and disposed to general waste bin providing there is no liquid present. larger spills to be managed in the onsite landfarm.
Reporting and re-preparedness	See SOPs: <ul style="list-style-type: none"> • Incident Notification SOP GRP-HSEQ-3-02Incident_Reporting_Investigation_and_Action_Management v3.2.pdf • Review of PIRMP • Review of relevant Management plan • Reporting as per Conditions of consent • Reporting as per EPL

Incident No 10

Incident #10	Excessive Dust from traffic areas. Actions Required: <ul style="list-style-type: none"> • Employees, Contractor/Visitor to notify site representative of issue immediately. (induction) Who: Warden • Daily monitoring to be undertaken to capture weather and site conditions Who: Supervisor • Contact all relevant people/department if the potential for harm is present (refer to Immediate Reporting Contact Sheet) Who: Warden • Dust suppression activity to commence immediately on unsealed roads & dusty areas of site Who: Supervisor • Traffic to be stopped if dust is not able to be managed Who: Supervisor
Alarm raising	Any personnel involved or witnessing incident to report to immediate supervisor and PIRMP actions to be implemented.
Emergency Controller	<ul style="list-style-type: none"> • Angus Shedden or Shift Supervisor
Scale of incident	Incident would be localised to the area with minimal external impact..
Evacuate	Only if fire or explosion potential exists. Quarry Manager and any advice provided by Fire Dept as part of attendance after immediate notification. No external evacuation required however internal may be necessary
Communications	Internal: <ul style="list-style-type: none"> • Angus Shedden • Rod Wallace • Rod Johnson &/or Sharon Makin External mandatory:

	<ul style="list-style-type: none"> • Immediate Reporting Contact Sheet to be used External non-mandatory: N/A
Rescuer / respondent + safety checks	As per Site Emergency Plan or Fire Department as part of Immediate Reporting
Rescue + First Aid	As per Site Emergency Plan or Fire Department as part of Immediate Reporting
Clean up and Waste disposal	N/A
Reporting and re-preparedness	See SOPs: <ul style="list-style-type: none"> • Incident Notification SOP GRP-HSEQ-3-02Incident_Reporting_Investigation_and_Action_Management v3.2.pdf • Review of PIRMP • Review of relevant Management plan • Reporting as per Conditions of consent • Reporting as per EPL

Incident No 11

Incident #11	Smoke from burning equipment / or flammable goods (including tyres) Actions Required: <ul style="list-style-type: none"> • Employees, Contractor/Visitor to notify site representative of issue immediately. (induction) Who: Warden • Emergency response plan to be activated as necessary including fire fighting if possible or calling Emergency Services Who: Warden • Contact all relevant people/department (refer to Immediate Reporting Contact Sheet) Who: Warden
Alarm raising	Any personnel involved or witnessing incident to report to immediate supervisor and PIRMP actions to be implemented.
Emergency Controller	<ul style="list-style-type: none"> • Shift Supervisor
Scale of incident	Incident would be localised to the area with minimal external impact. Impact would be visual due to smoke
Evacuate	Only if fire or explosion potential exists. Advice to be provided by Fire Dept as part of attendance after immediate notification. No external evacuation required unless potential for explosion or for expansion of the fire, or if wind has the potential to carry smoke to neighboring residences.

Communications	<p>Internal:</p> <ul style="list-style-type: none"> • Angus Shedden • Rod Wallace • Rod Johnson &/or Sharon Makin <p>External mandatory:</p> <ul style="list-style-type: none"> • Immediate Reporting Contact Sheet to be used <p>External non-mandatory: N/A</p>
Rescuer / respondent + safety checks	As per Site Emergency Plan or Fire Department as part of Immediate Reporting
Rescue + First Aid	As per Site Emergency Plan or Fire Department as part of Immediate Reporting
Clean up and Waste disposal	Burnt and damaged materials to be disposed externally and recycled if possible.
Reporting and re-preparedness	<p>See SOPs:</p> <ul style="list-style-type: none"> • Incident Notification SOP GRP-HSEQ-3-02Incident_Reporting_Investigation_and_Action_Management v3.2.pdf • Review of PIRMP • Review of relevant Management plan • Reporting as per Conditions of consent • Reporting as per EPL

Incident No 12

Incident #12	<p>Failure of fines or scalps stockpile.</p> <p>Actions Required:</p> <ul style="list-style-type: none"> • Contact all relevant people/department (refer to Immediate Reporting Contact Sheet – departments identified in yellow) Who: Warden • Stop any further discharge Who: Warden • Replace sediment controls such as straw bales Who: Warden • Ensure remaining stockpile is stable throughout the entire period of incident (i.e. periodic inspections) Who: Warden • Area to be restricted to Incident Response Personnel Who: Warden • Contact local contractor to rehabilitate area immediately – removal of material as well as tree planting as needed Who: HSE
Alarm raising	Any personnel involved or witnessing incident to report to immediate supervisor and PIRMP actions to be implemented.

Emergency Controller	<ul style="list-style-type: none"> • Angus Shedden or Shift Supervisor • Call service provider (Angus Shedden or Shift Supervisor) • Periodic inspections and update reporting of site (Sharon Makin) • Daily inspections, drainage and stability management (Brett Bates)
Scale of incident	Catastrophic failure of a scalps or fines stockpile is likely to result in off-site impacts to water courses which would predominantly reduce water quality over a short period of time. As such, impact to the environment/human health is not considered to be significant.
Evacuate	Not applicable
Communications	<p>Internal:</p> <ul style="list-style-type: none"> • Angus Shedden • Rod Wallace • Rod Johnson &/or Sharon Makin <p>External mandatory:</p> <ul style="list-style-type: none"> • Immediate Reporting Contact Sheet to be used <p>External non-mandatory: N/A</p>
Rescuer / respondent + safety checks	As per Site Emergency Plan as part of Immediate Reporting
Rescue + First Aid	As per Site Emergency Plan as part of Immediate Reporting
Clean up and Waste disposal	Consultants to be contacted to advise on required clean-up and rehabilitation if necessary
Reporting and re-preparedness	<p>See SOPs:</p> <ul style="list-style-type: none"> • Incident Notification SOP GRP-HSEQ-3-02Incident_Reporting_Investigation_and_Action_Management v3.2.pdf • Review of PIRMP • Review of relevant Management plan • Reporting as per Conditions of consent • Reporting as per EPL

Incident No 13

Incident #13	<p>Excessive airborne dust from infrastructure collapse</p> <p>Actions Required:</p> <ul style="list-style-type: none"> • Employees, Contractor/Visitor to notify site representative of issue immediately as per induction Who: Warden • Affected Operations to cease until dust suppression system or alternative controls can be rectified Who: Warden • Contact all relevant people/department (refer to Immediate Reporting Contact Sheet) Who: Warden
Alarm raising	Any personnel involved or witnessing incident to report to immediate supervisor and PIRMP actions to be implemented.
Emergency Controller	<ul style="list-style-type: none"> • Angus Shedden or Shift Supervisor • Call service provider (Angus Shedden or Shift Supervisor)
Scale of incident	depending on wind direction and strength, dust may have seen impact on close neighbors. Noise likely to be heard.
Evacuate	Only if fire or explosion potential or other structural failure exists. Quarry Manager and any advice provided by Fire Dept as part of attendance after immediate notification. No external evacuation required however internal may be necessary.
Communications	<p>Internal:</p> <ul style="list-style-type: none"> • Angus Shedden • Rod Wallace • Rod Johnson &/or Sharon Makin <p>External mandatory:</p> <ul style="list-style-type: none"> • Immediate Reporting Contact Sheet to be used <p>External non-mandatory: N/A</p>
Rescuer / respondent + safety checks	As per Site Emergency Plan or Fire Department as part of Immediate Reporting
Rescue + First Aid	As per Site Emergency Plan or Fire Department as part of Immediate Reporting
Clean up and Waste disposal	dust to be cleared and disposed in filler dust cells if required. Infrastructure materials to be recycled
Reporting and re-preparedness	<p>See SOPs:</p> <ul style="list-style-type: none"> • Incident Notification SOP GRP-HSEQ-3-02Incident_Reporting_Investigation_and_Action_Management v3.2.pdf • Review of PIRMP • Review of relevant Management plan • Reporting as per Conditions of consent • Reporting as per EPL

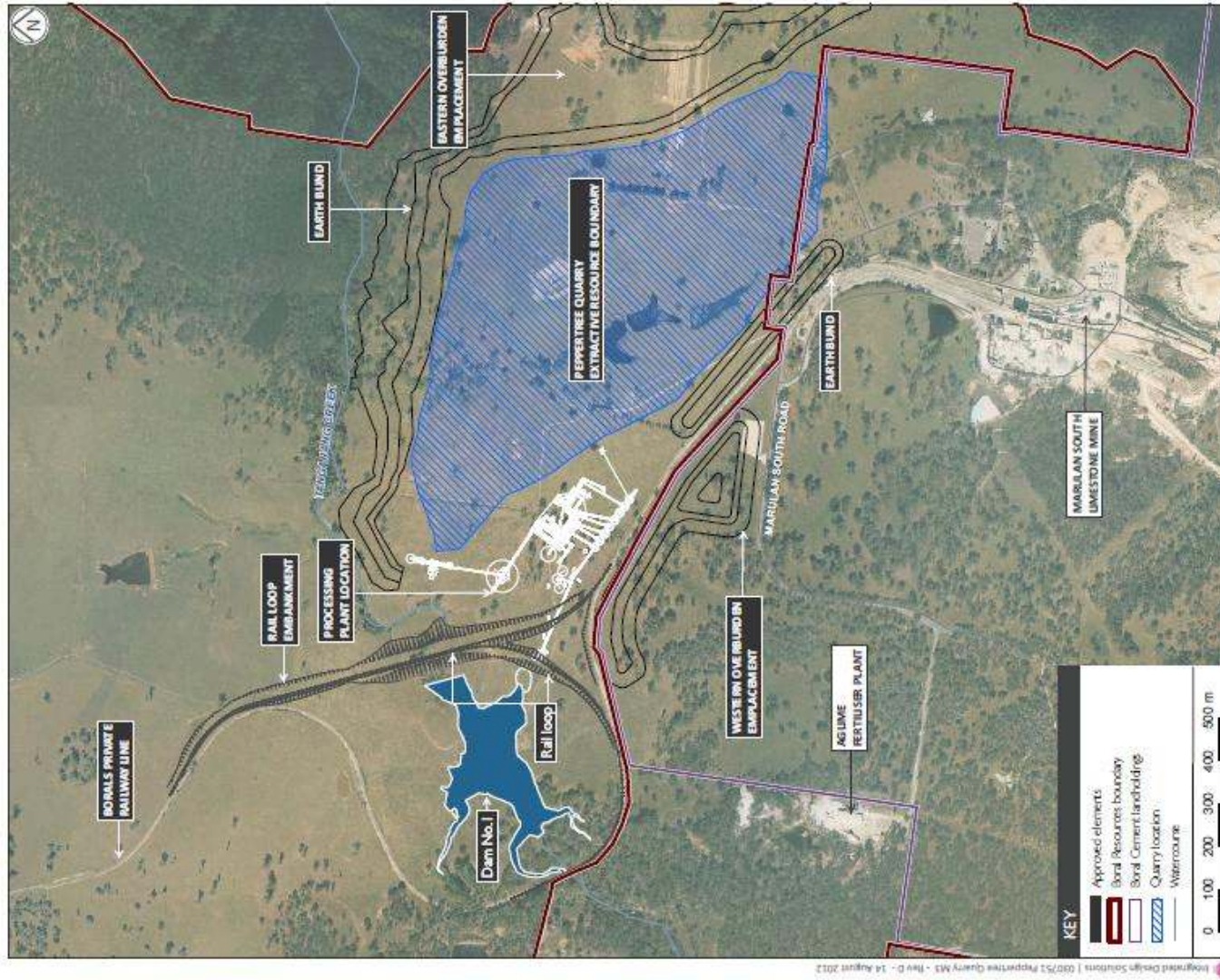
APPENDIX 3.

PEPPERTREE QUARRY LOCATION MAP



APPENDIX 4.

PEPPERTREE QUARRY REFERENCE MAP

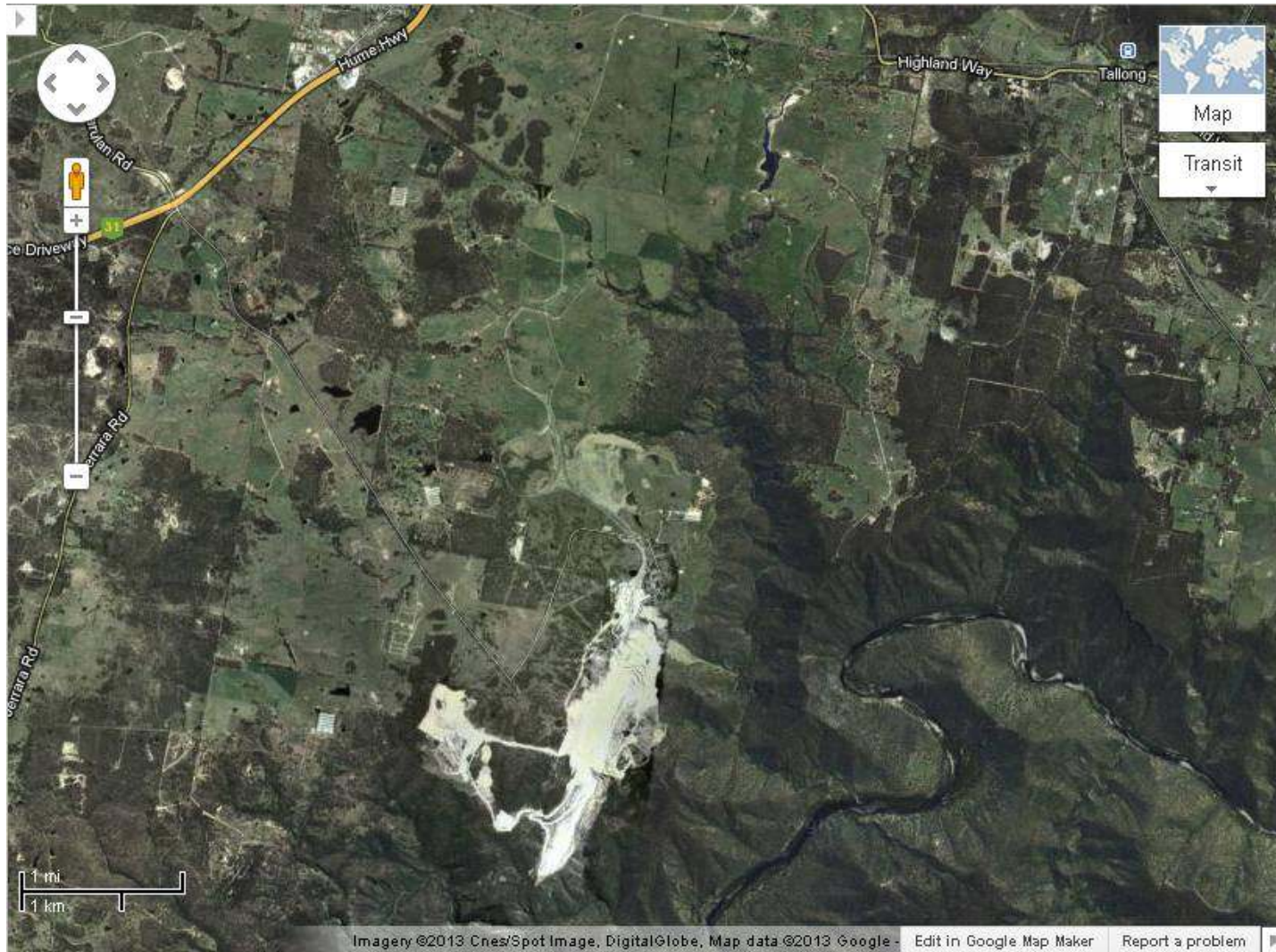


Approved project
Peppertree Quarry - Modification 3
Figure 2.1



APPENDIX 5.

PEPPERTREE QUARRY – MAP OF AFFECTED AREAS



APPENDIX 6.

POLLUTION INCIDENT NOTIFICATION LOG

Person undertaking notification (Name/Function):		
Date and time when first become aware of the incident:		
Incident type:		
Comments:		

Initial immediate notification log				
Appropriate Regulatory Authority	Time of call	Respondent's name/function	Approximate call duration	Comments
EPA				
Public Health Unit				
Fire and Rescue NSW				
Local Council				
WorkCover				
Other:				
Other:				
Summary of initial communication:				

Person undertaking notification (Name/Function):		
Date and time when additional information become available:		
Comments:		

Immediate notification of further pertinent information (if applicable)				
Appropriate Regulatory Authority	Time of call	Respondent's name/function	Approximate call duration	Comments
EPA				
Public Health Unit				
Fire and Rescue NSW				
Local Council				
WorkCover				
Other:				
Other:				
Summary of additional communication				