



Building
something
great

Community Consultative Committee

Peppertree Quarry & Marulan South Limestone
May 2023



AGENDA

1. Welcome and introductions
2. Confirmation of minutes and actions
3. Business arising
4. Correspondence
5. Operations over the last 3 months
6. Environmental performance
 - a. Incidents
 - b. Complaints
 - c. Air
 - d. Noise
 - e. Blast
 - f. Water – surface and ground
 - g. Heritage
 - h. Ecology
7. Stakeholder Engagement
7. Stakeholder Engagement
8. Plans for the next 3 months
9. General Business
10. Next meetings - August 2023





Building
something
great

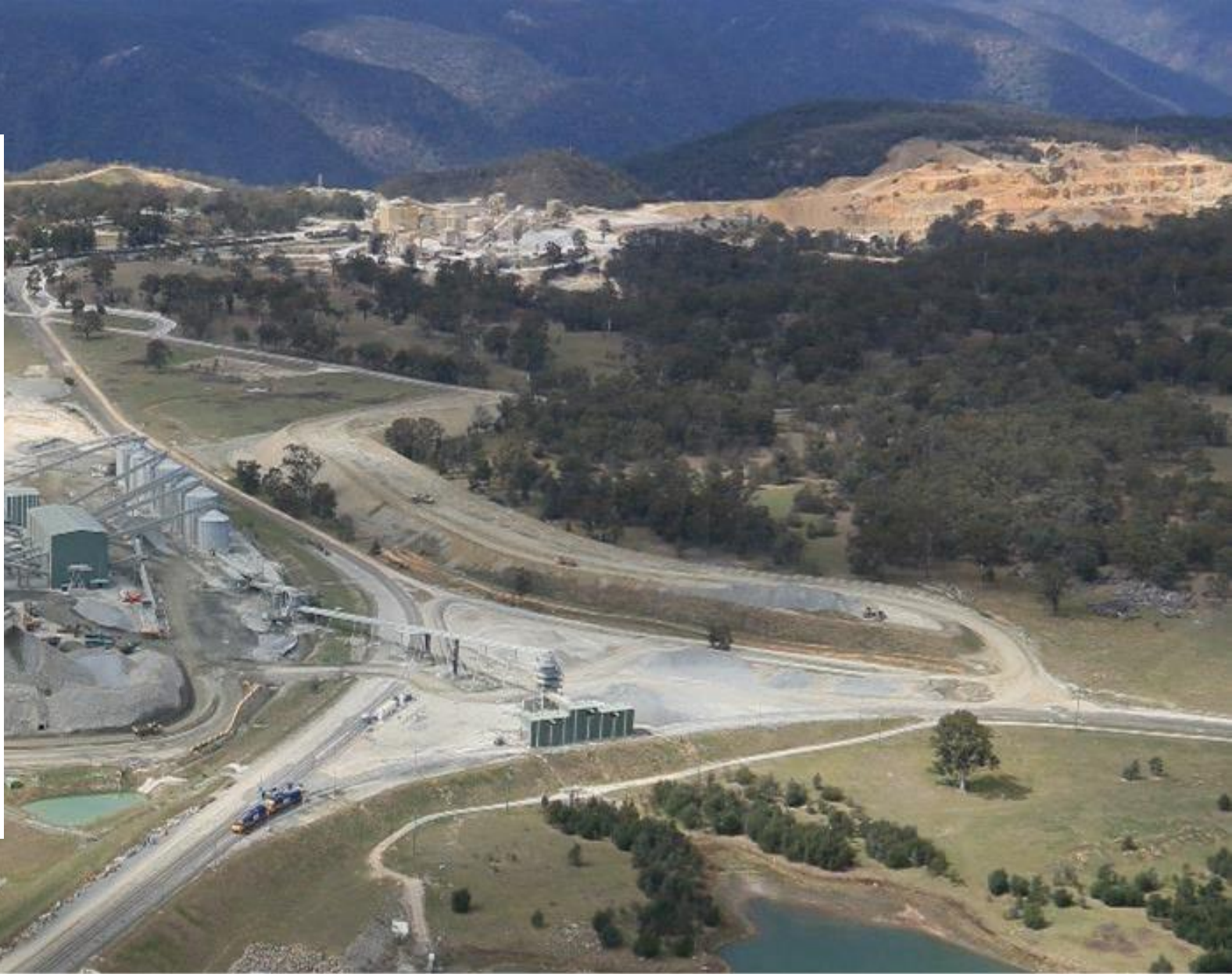
01

Welcome and apologies



02

Confirmation of minutes





972H

ZERO HARM TODAY

ZERO HARM TODAY

03

Business arising

JUMP START RECEPTACLE 24 VOLT
STARTER ISOLATOR
BATTERY ISOLATOR



Building
something
great

04

Correspondence Feb 2023 – May 2023



Peppertree Quarry

Department of Planning and Environment

Submission and approval of annual review

Submission of Aboriginal Heritage Interim Report and MSL055

Potential incident notification

EPA

Potential incident notification

Resources Regulator

Planned inspection fire and explosion- mechanical

Slope stability

Goulburn Mulwaree Council

Nil

Geoff Clark

weather data reviews – weather station monthly reviews

Marulan South Limestone

EPA

- Environmental Protection Licence amendments have been approved in line with the DA

Resources Regulator

- Mine and dump stages for Rehabilitation Management Plan (RMP) have been drafted. Waiting on final approval of mining lease before submission of RMP
- Mining Lease is being put towards the MEG board for determination
- Ongoing Planned Inspections

Goulburn Mulwaree Council

- Work ongoing on designs of upgrade for Marulan South Road
- Ongoing discussions around potential wastewater treatment supply



05

**Operations
Past 3 months**

Peppertree Quarry

Safety

No LTI/MTI over the last three months. Hazard reporting has improved.

Overburden

Overburden is being stripped focusing in a Southerly direction circa 1.5 million m³ has been moved. We will move into the next stage in September 2023 there will be a further 1.2 million m³ in this phase.


Pit Update

Contract crushing on the RL525, in pit crushing will continue in a southerly direction directly following stripping.

Processing (STQ)

Production on target.

People

 Roles in both STQ and Primary. Quarry Manager and Environmental advisor recruiting.

Building
something
great

Marulan South Limestone

Safety

Focus on training including manual handling, confined spaces, fire extinguisher, forklift, bobcat, excavator and loader. Risk assessment reviews on mine extraction, plant assessor on all HME, structure and large tyre failure, pressure vessels, fire suppression system and emergency management. Go-line development including lights, painting and tyres.

Overburden

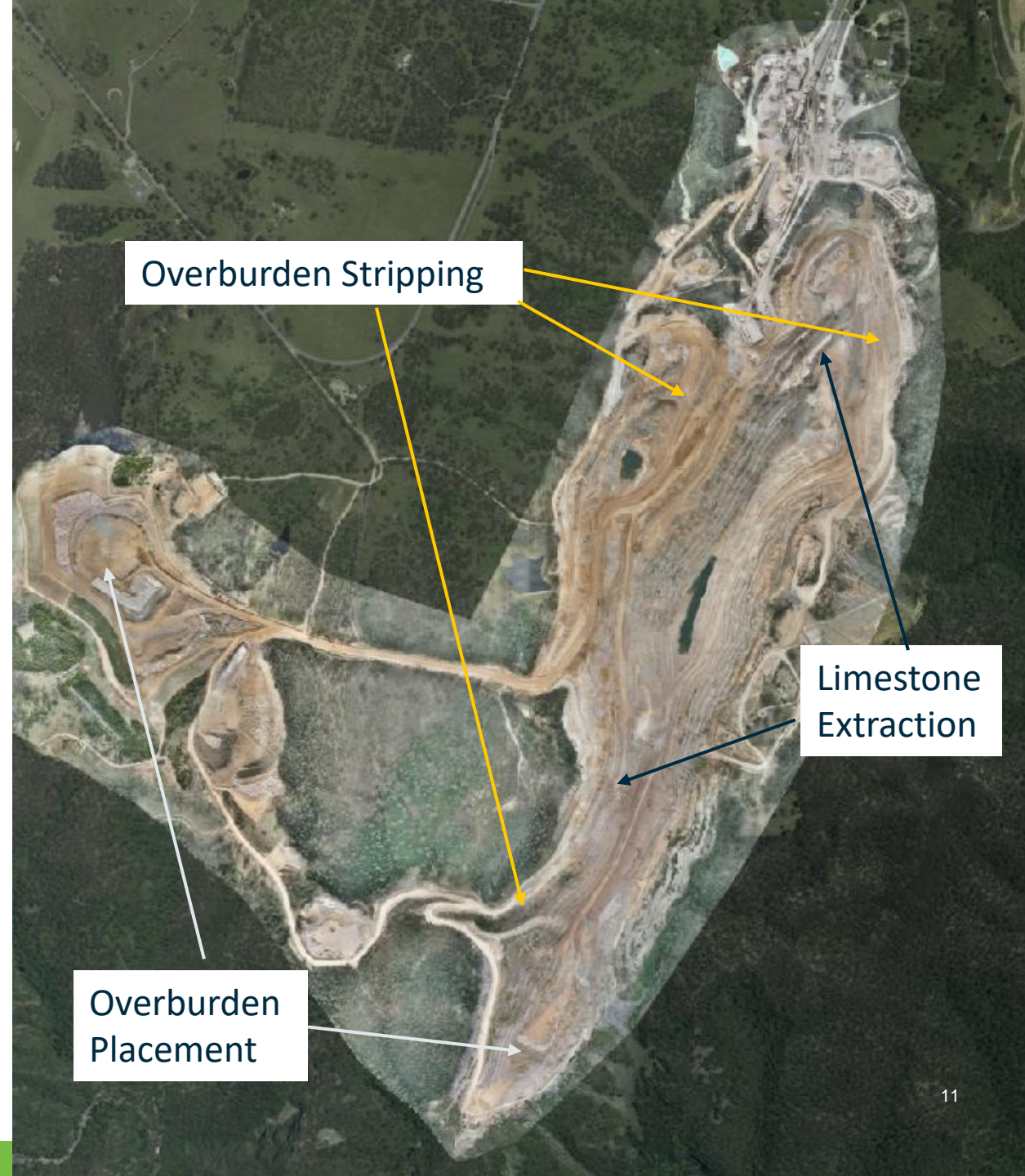
Overburden stripping has been progressing at a steady 375,000t/month.

Limestone Extraction

Extracting at a rate of 250,000t/month.

People

Total of 94 employees on site



06

Environmental Performance



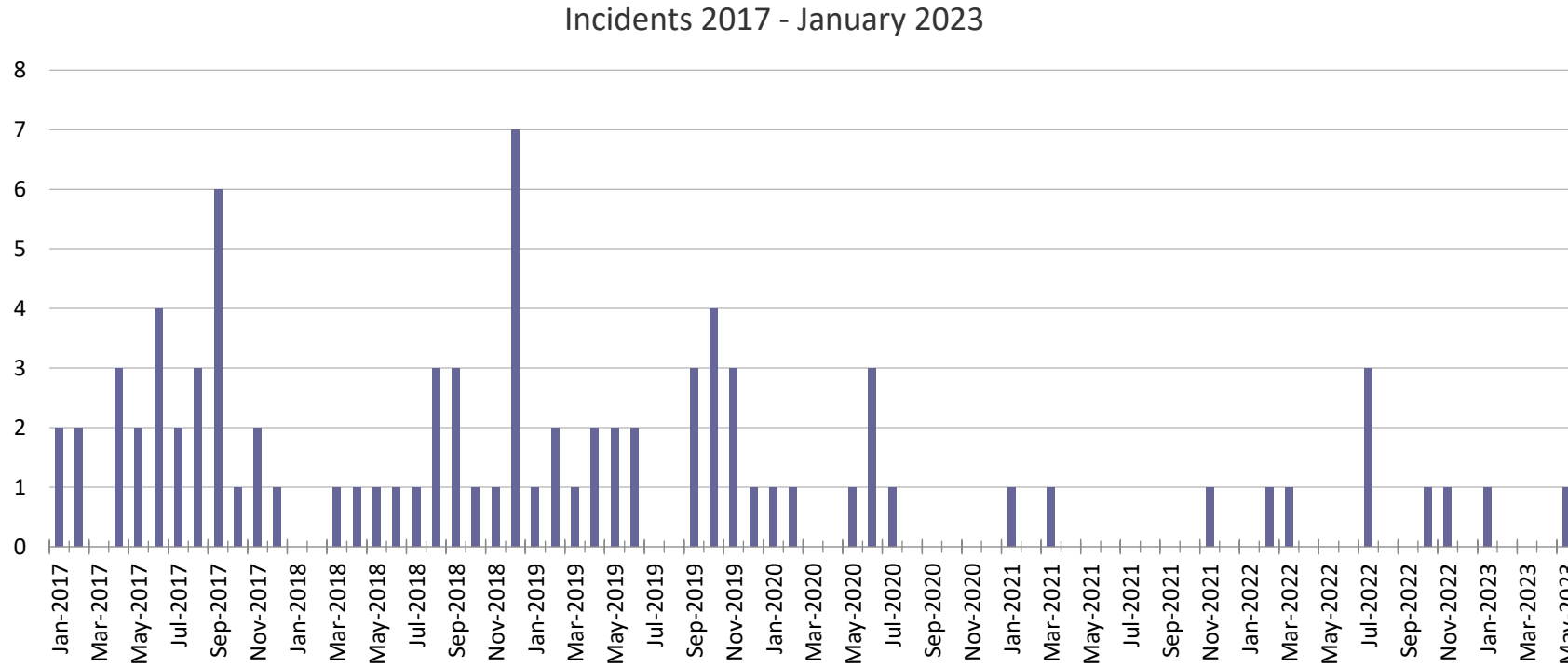
06.1

Environmental Performance
Peppertree Quarry



**Building
something
great**

Environmental Incidents Jan 2017 to May 2023

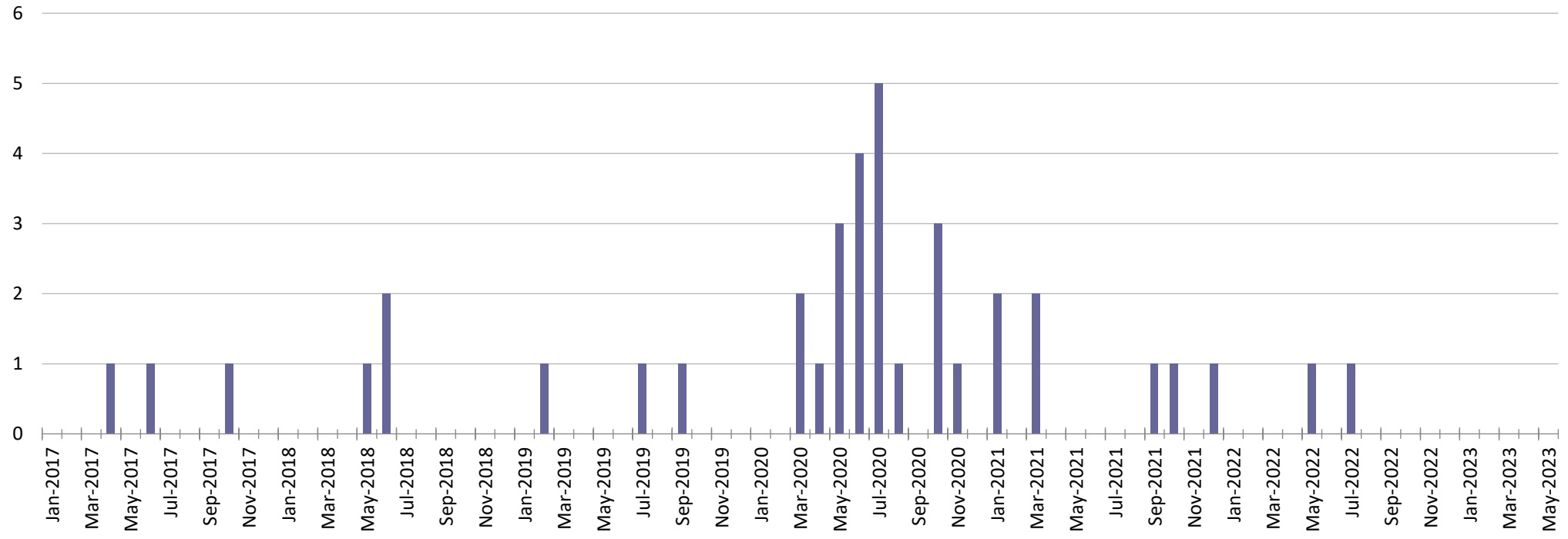


Jan- 1 (1 x localised oil spill), May- 1 (1x blasting)

Environmental Complaints Jan 2017 to May 2023



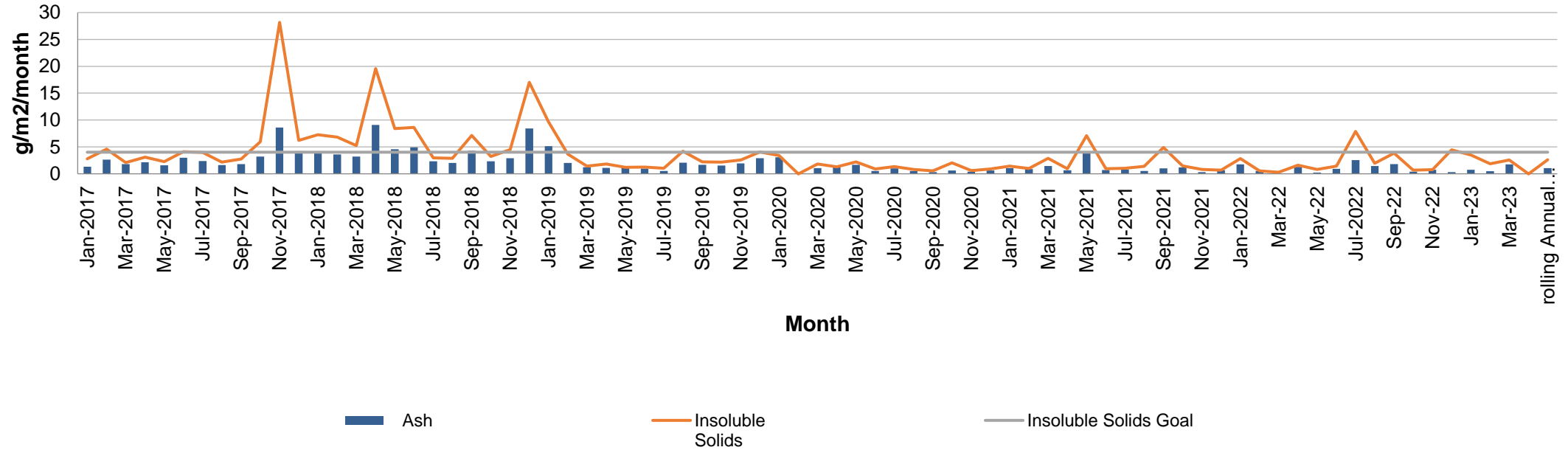
Complaints 2017 to January 2023



Air – Dust deposition Gauge D1



Peppertree Quarry Deposited Dust 2017 - 2023
Onsite (NW boundary)



Annual Average goal of 4gm²/month

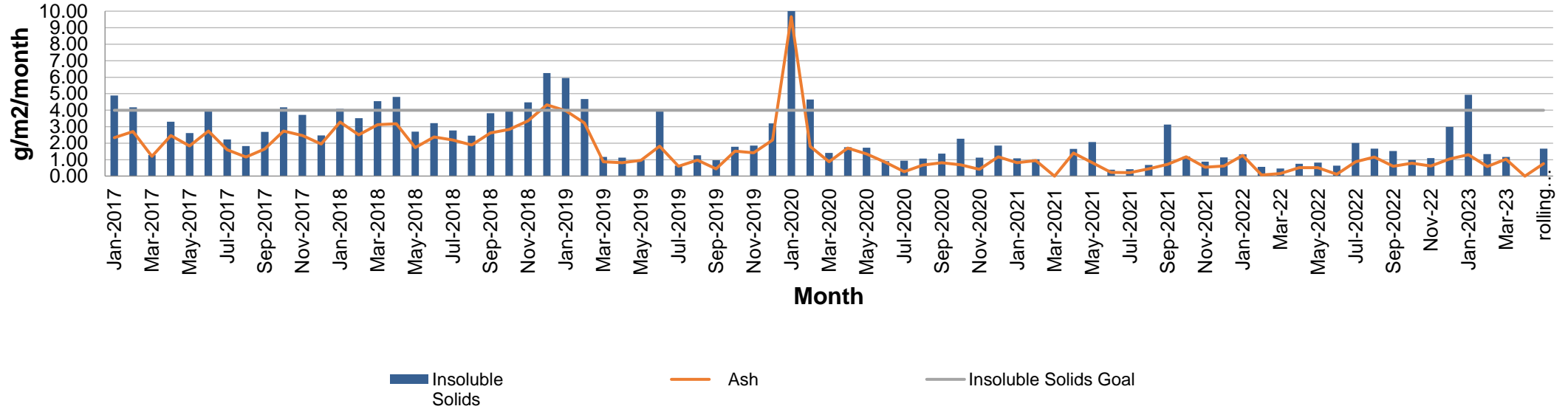
In compliance

Annual average below goal at the boundary

Air – Dust Deposition Gauge D2



Peppertree Quarry Deposited Dust 2017 - 2023
683 Marulan South Road



Annual Average goal of 4gm²/month

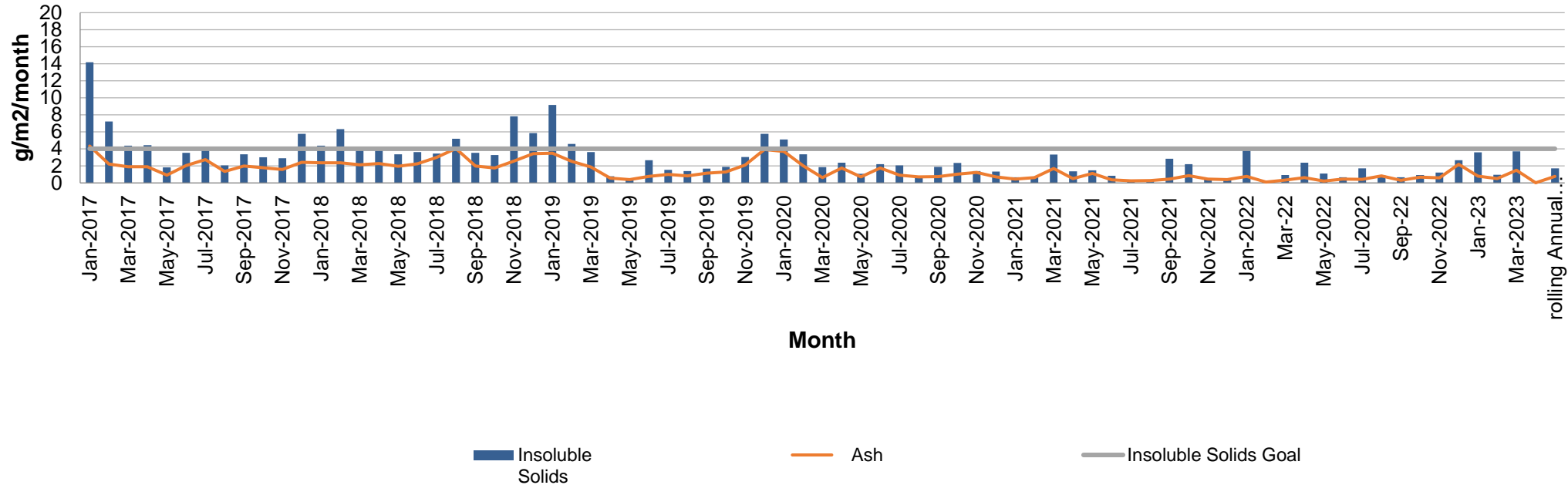
In compliance

Annual average below goal at the boundary

Air – Dust Deposition gauge D3

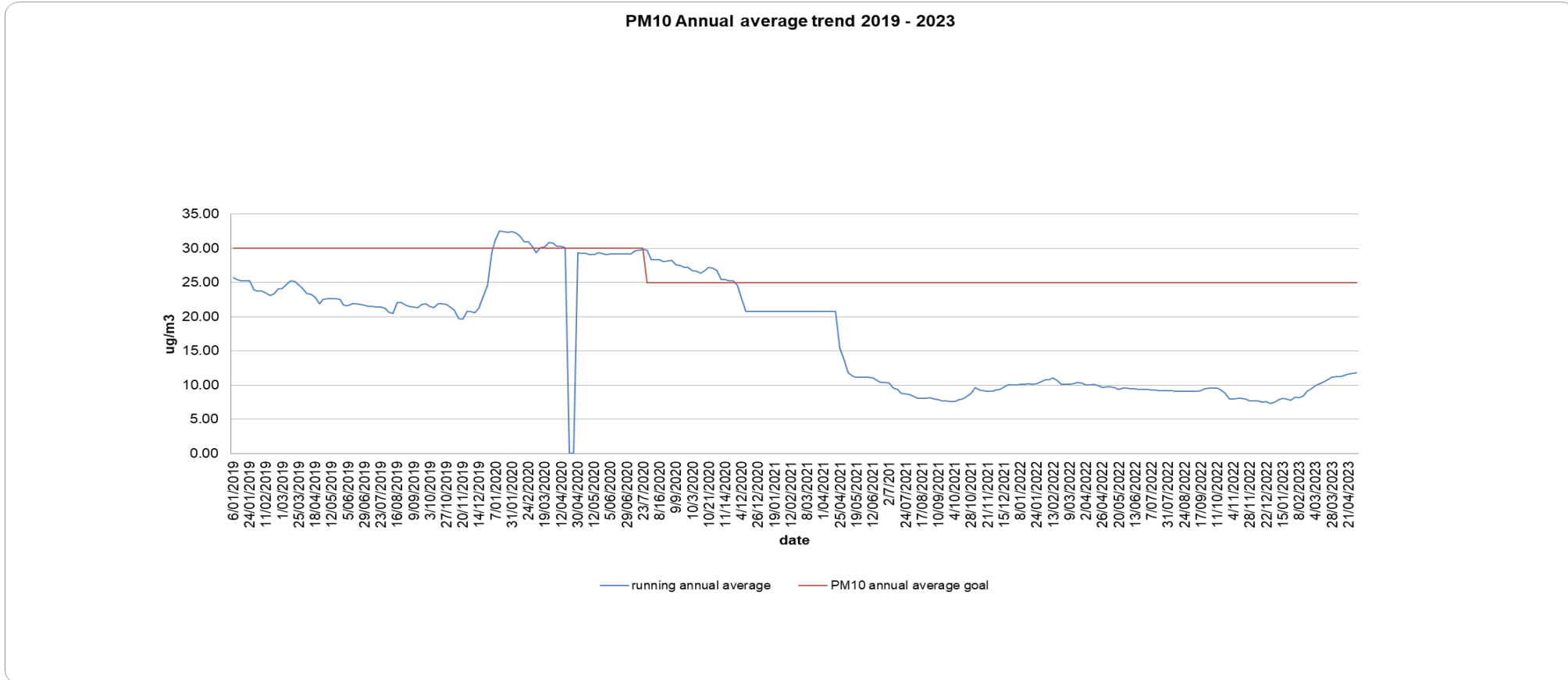


Peppertree Quarry Deposited Dust 2017 - 2023
432 Long Point Road, Tallong



Annual Average goal of 4gm²/month
 In compliance
 Annual average below goal at the boundary

Air – PM10 annual average

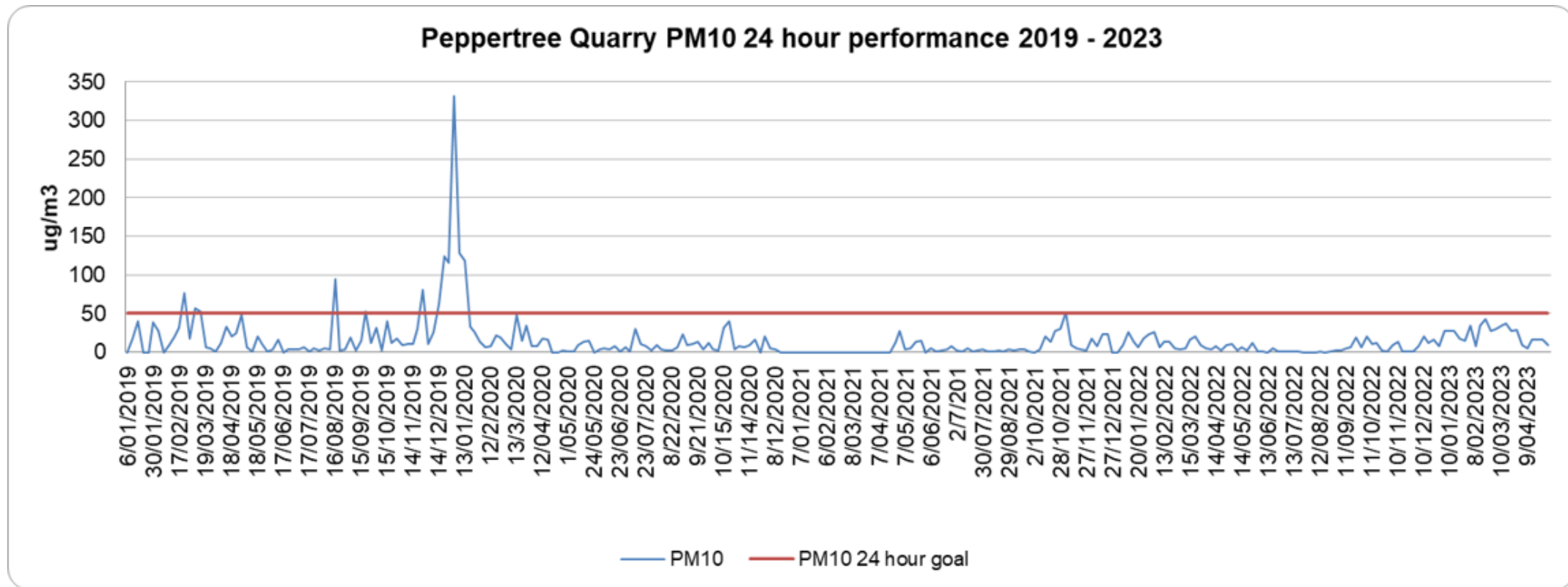


Annual Average goal of 25ug/m³

In compliance

Annual average below goal at the boundary

Air – PM10 24 Hour performance



24 hour goal of 50ug/m³

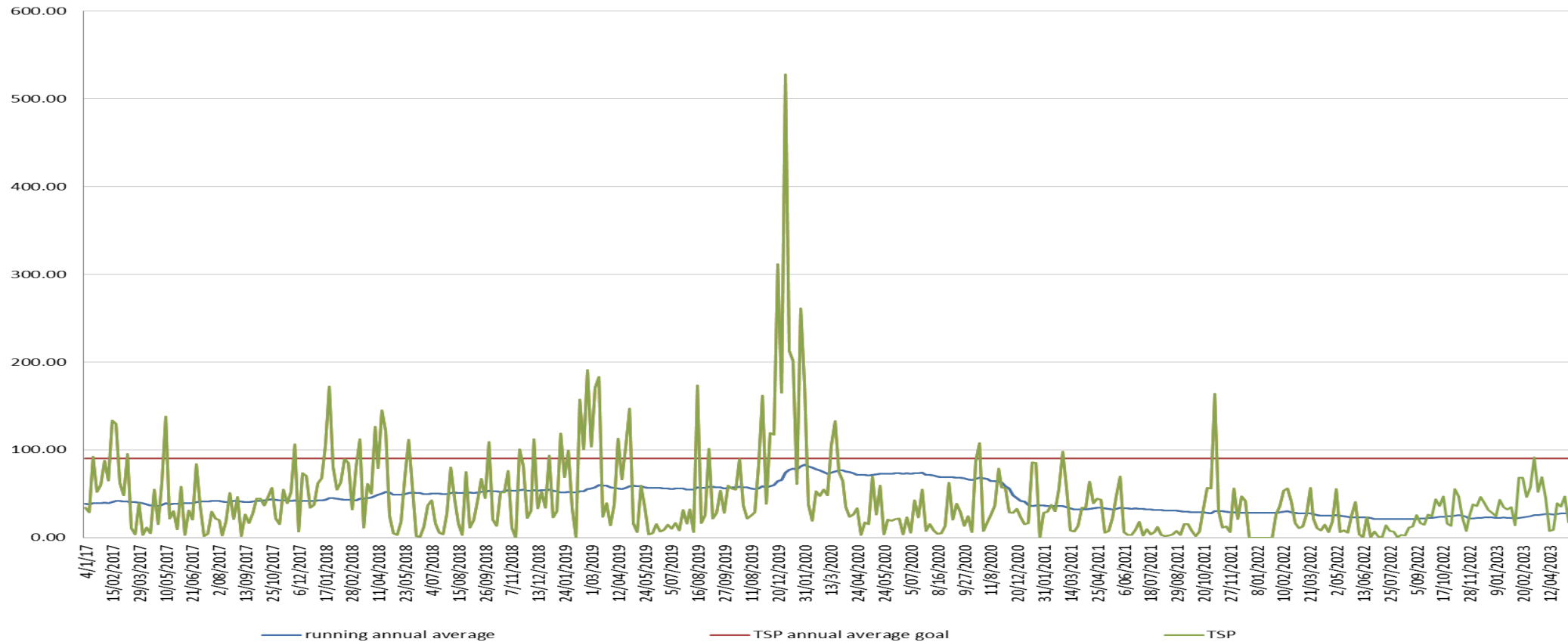
In compliance

Annual average below goal at the boundary

Air – Total Suspended Particulates



TSP Annual average trend 2017 - 2023

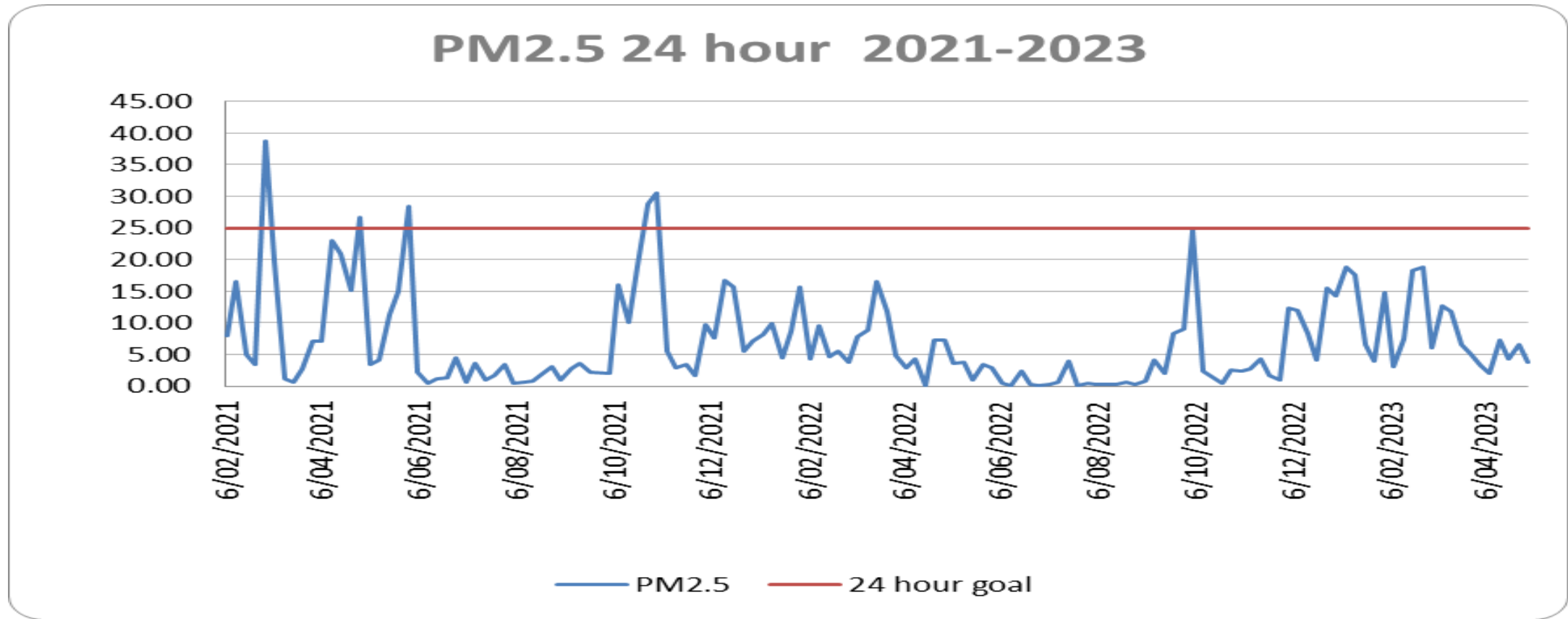


Annual Average goal of 90 $\mu\text{g}/\text{m}^3$

In compliance

Annual average below goal at the boundary

Air – PM2.5



In compliance for the past 3 months.

Noise – quarterly monitoring

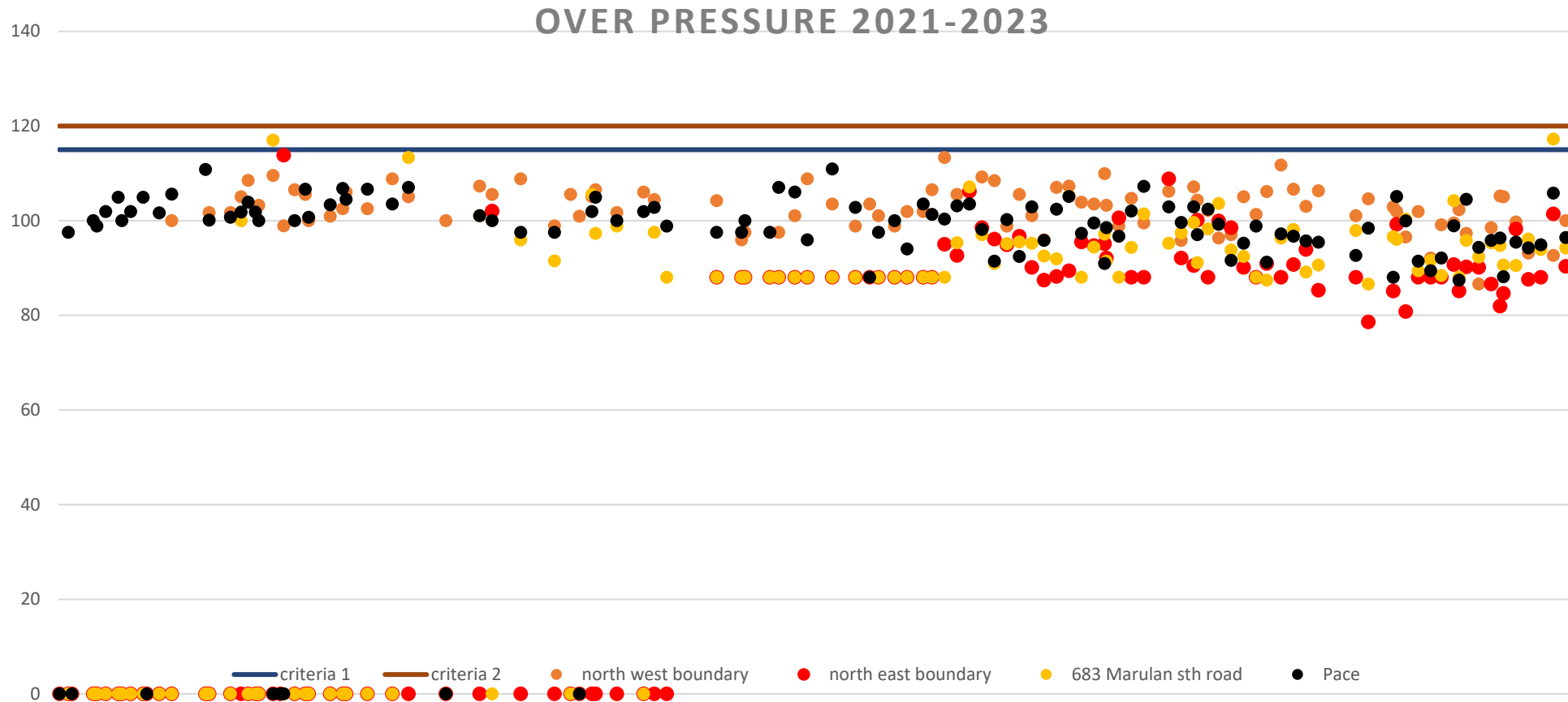


Monitoring was undertaken over 23rd, 24th and 25th January 2023

Results for the January round are in compliance.

Next round due in April-June.

Blasting - Overpressure

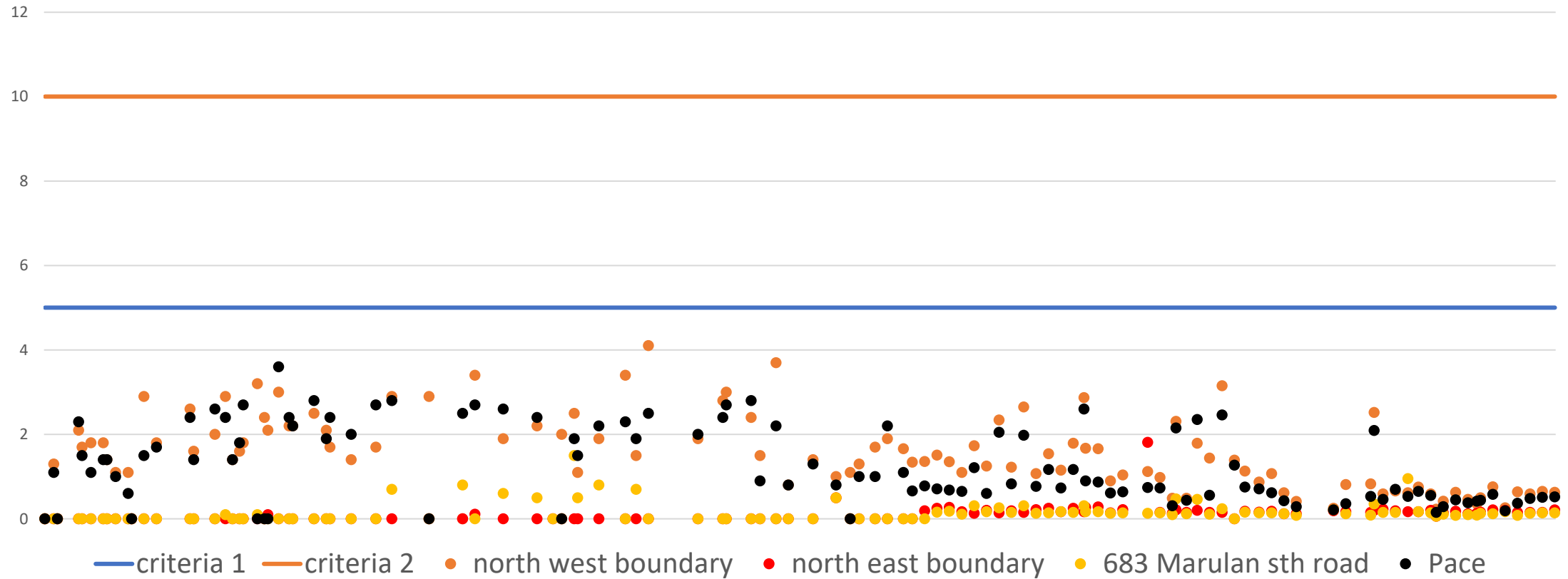


In Compliance

Blasting – ground Vibration



Vibration 2021-2023



In Compliance

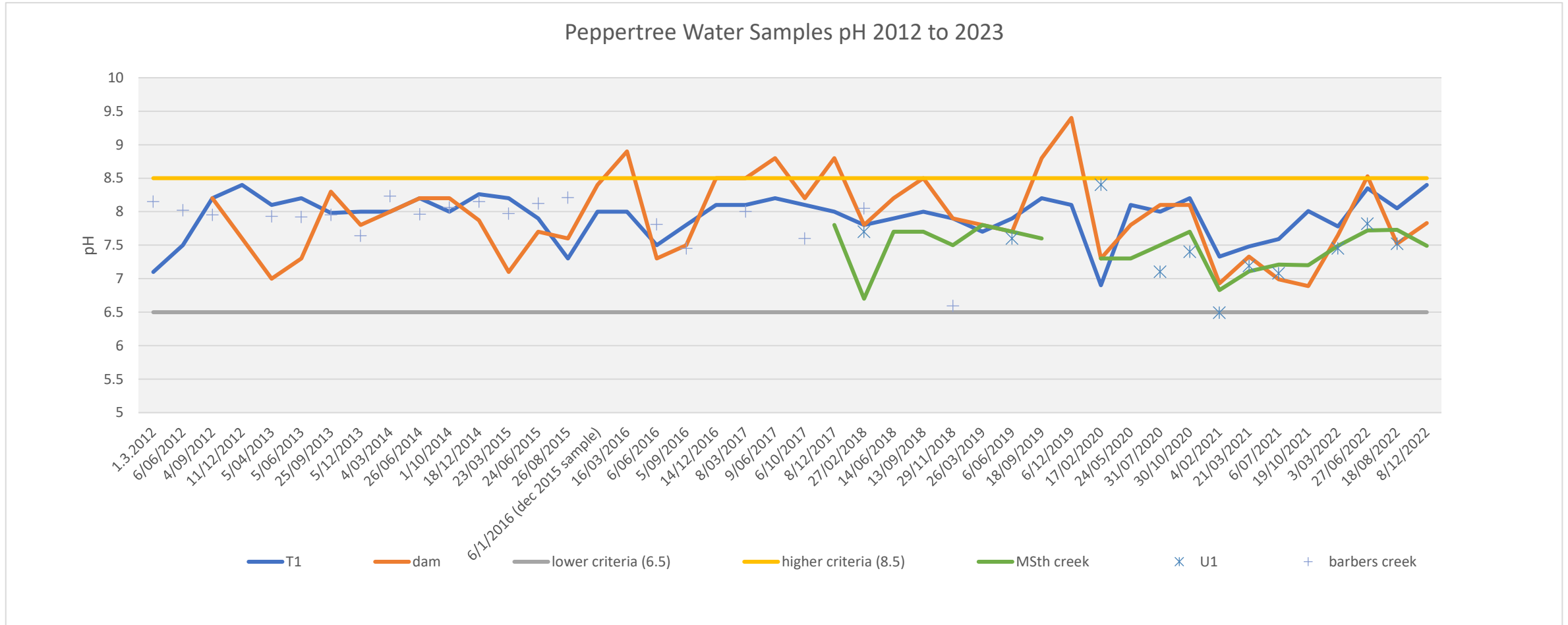
Surface Water



Quarterly monitoring round undertaken in January – March 2023 with sampling on Thursday 23rd Feb 2023

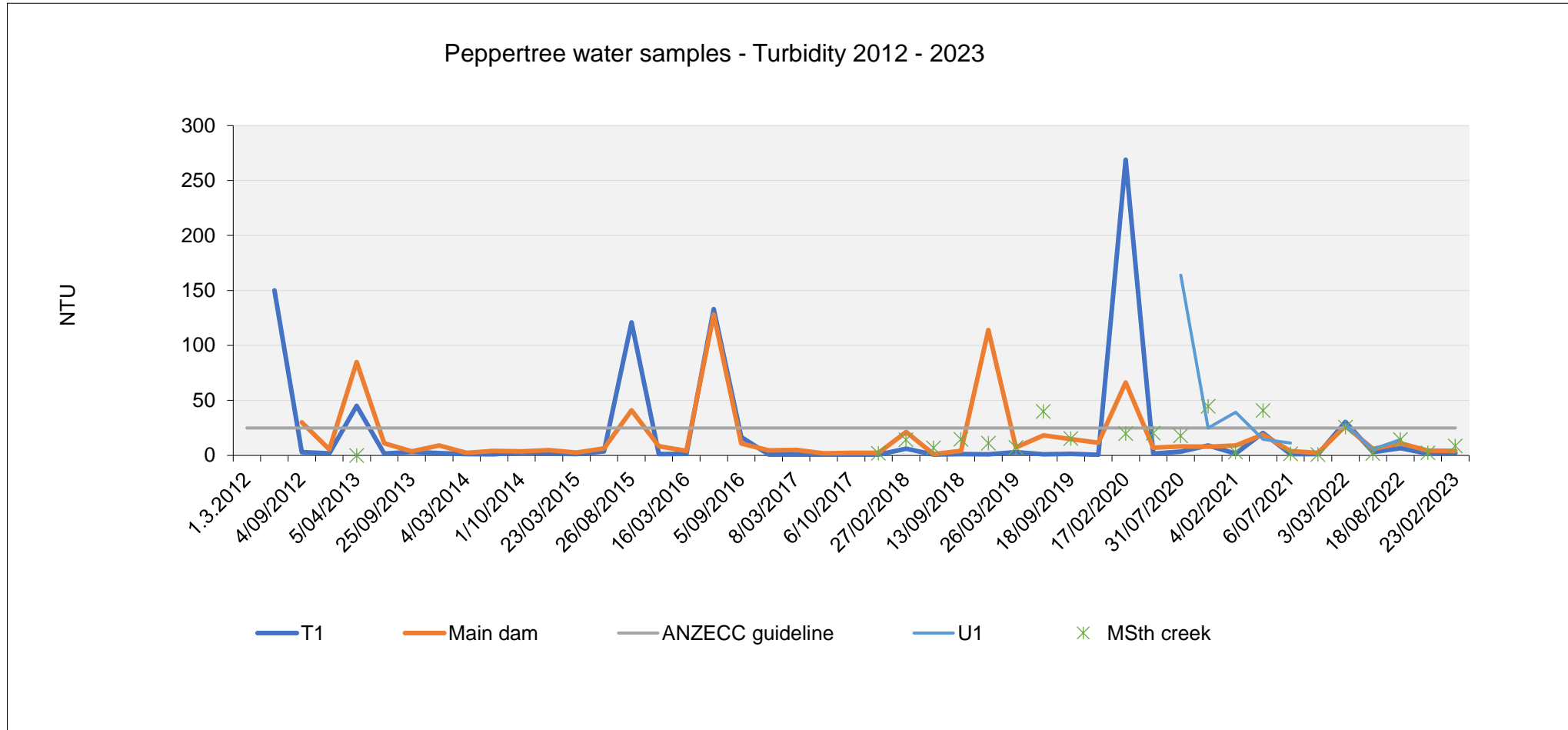
No issues with water supply or quality over the last 3 months

Surface water - pH



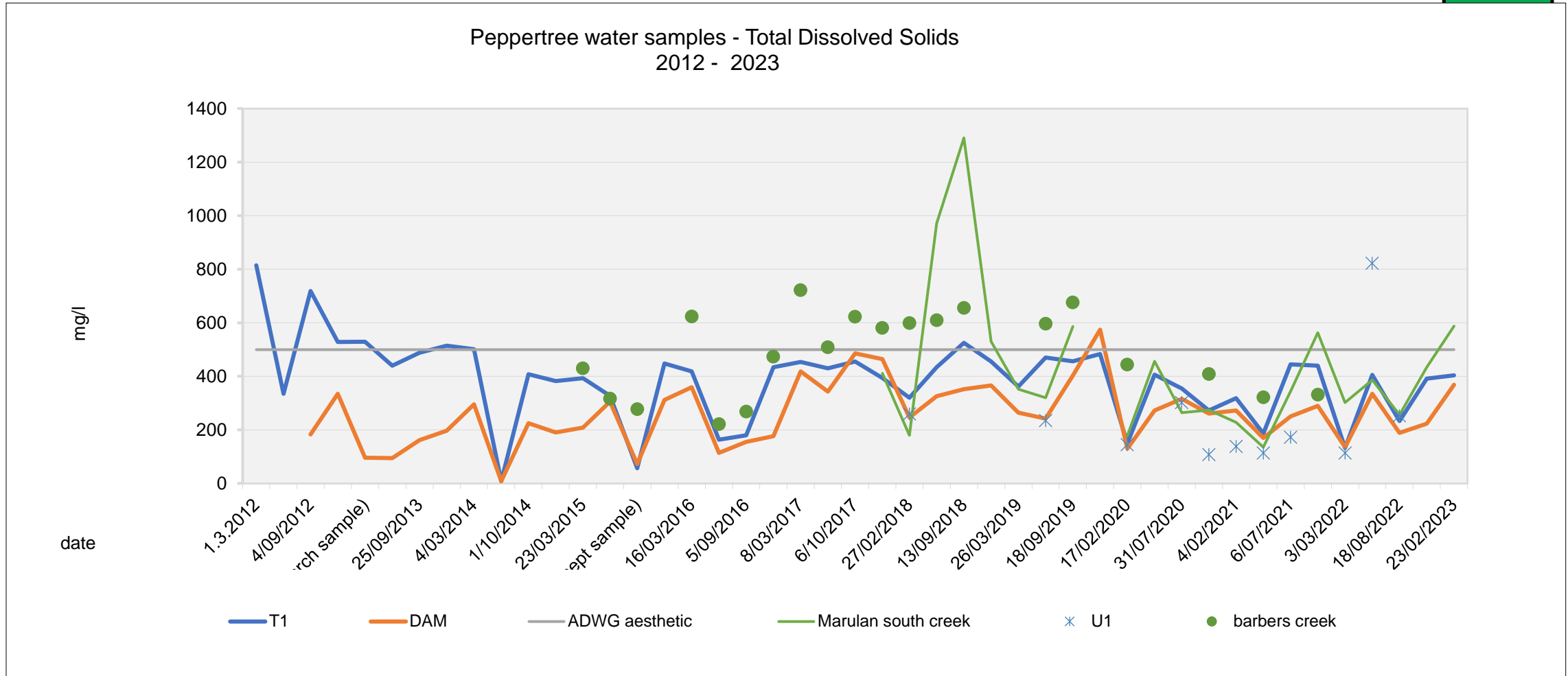
Within guideline for Feb samples

Surface water - Turbidity



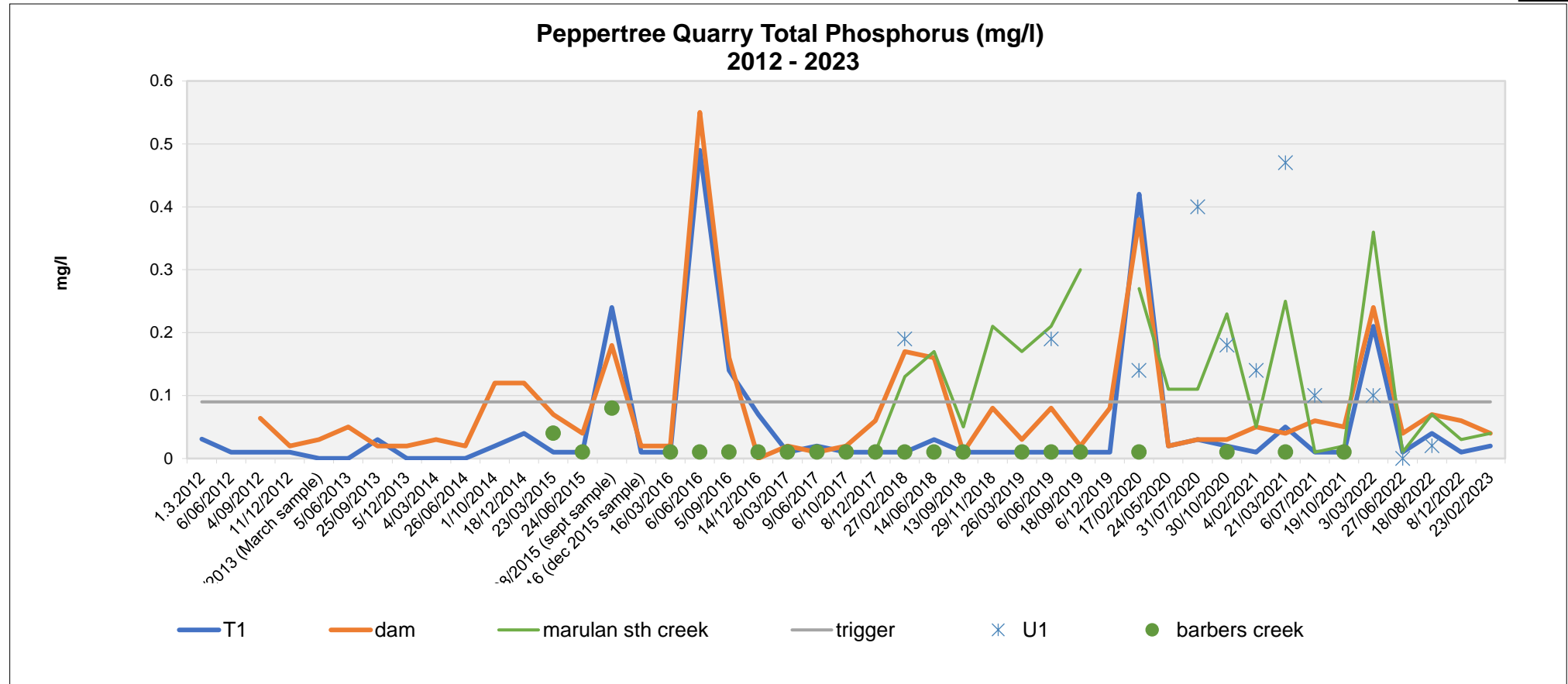
Below guideline for Feb samples

Surface water – Total dissolved solids



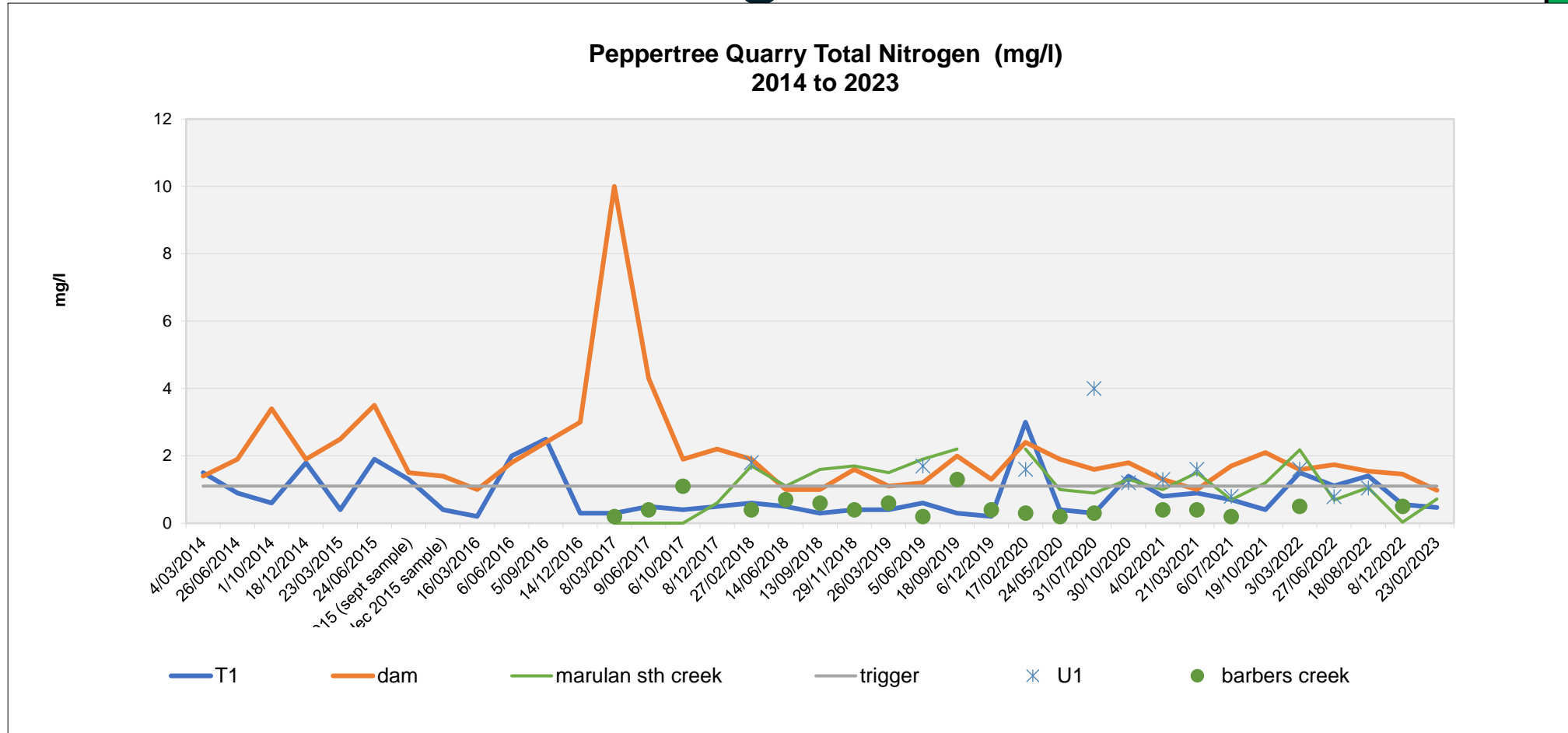
Below guideline for Feb samples with exception of Marulan South Creek

Surface water – total Phosphorus



Below guideline for Feb samples

Surface water - Total Nitrogen



Below guideline for Feb samples

Environmental Flow



year	total in flow	10%	total out flow	in compliance	comment
Apr-2022	30.3	3.03	656.16	yes	Rainfall - possible overflow of the V notch weir
May-2022	22.6	2.26	316.52	yes	Rainfall - possible overflow of the V notch weir
Jun-2022	3.1	0.31	6.6	yes	
Jul-2022	60.6	6.06	820.91	yes	Rainfall - possible overflow of the V notch weir
Aug-2022	34.2	3.42	341.8	yes	Rainfall - possible overflow of the V notch weir
Sep-2022	18	1.8	22.88	yes	
Oct-2022	62.5	6.25	999.7	yes	Rainfall - possible overflow of the V notch weir
Nov-2022	42.2	4.22	411.49	yes	Rainfall - possible overflow of the V notch weir
Dec-2022	0.9	0.09	1.34	yes	
Jan-2023	15	1.5	15.48	yes	
Feb-2023	1.1	0.11	7.02	yes	
Mar-2023	2.5	0.25	3.67	yes	
Apr-2023	16	1.6	3.76	yes	

Ground water

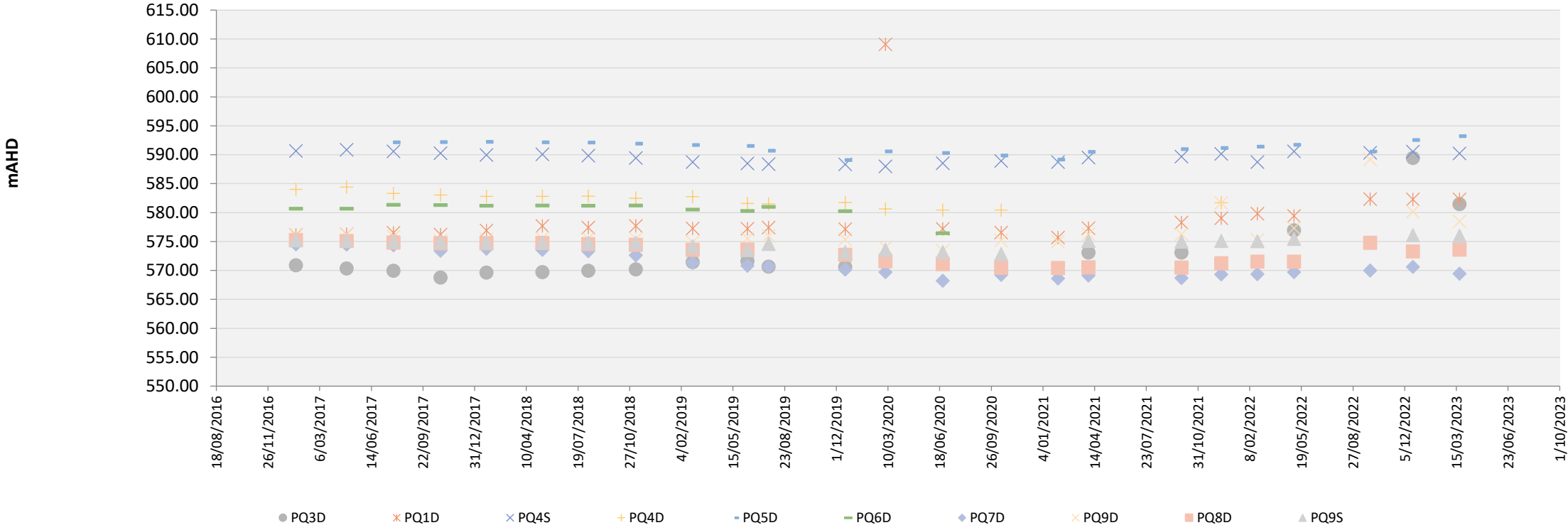


- > Monitoring conducted in Feb.
- > Results all good, next round in the coming month.
- > Results show no changes to the groundwater

Ground water – water levels



Standing Water Levels Groundwater 2016 - 2023



Heritage



Artefact analysis is continuing

Interim report + MSL055 report submitted to DPE and Heritage NSW

Reconciliation week activity being developed onsite, potential artwork in courtyard and artefact display for staff, heritage walk, bush tucker garden beds.

Scar tree relocation being planned, currently undercover near the farm house. Scar tree conservation consultant has provided report..



Ecology



Three year plan developed for ongoing rehabilitation and maintenance

- 16.5ha of tree planting in spring- delayed to autumn due to weather
- 5km of direct seeding in spring- delayed to autumn due to weather
- Hydromulching of EOE

Weed management undertaken in the last couple of months. Focus on black berry.

Nest box inspection + RVA + ecological monitoring complete

Seed bombing completed

More feral goats have been removed, happening on a as needs basis.
Pest monitoring currently underway.



06.2

Environmental Performance Marulan South Limestone



**Building
something
great**

Environmental Complaints Jan 2017 to May 2023



> Feb- nil, March- nil, April- nil

Air – Dust deposition Site 1

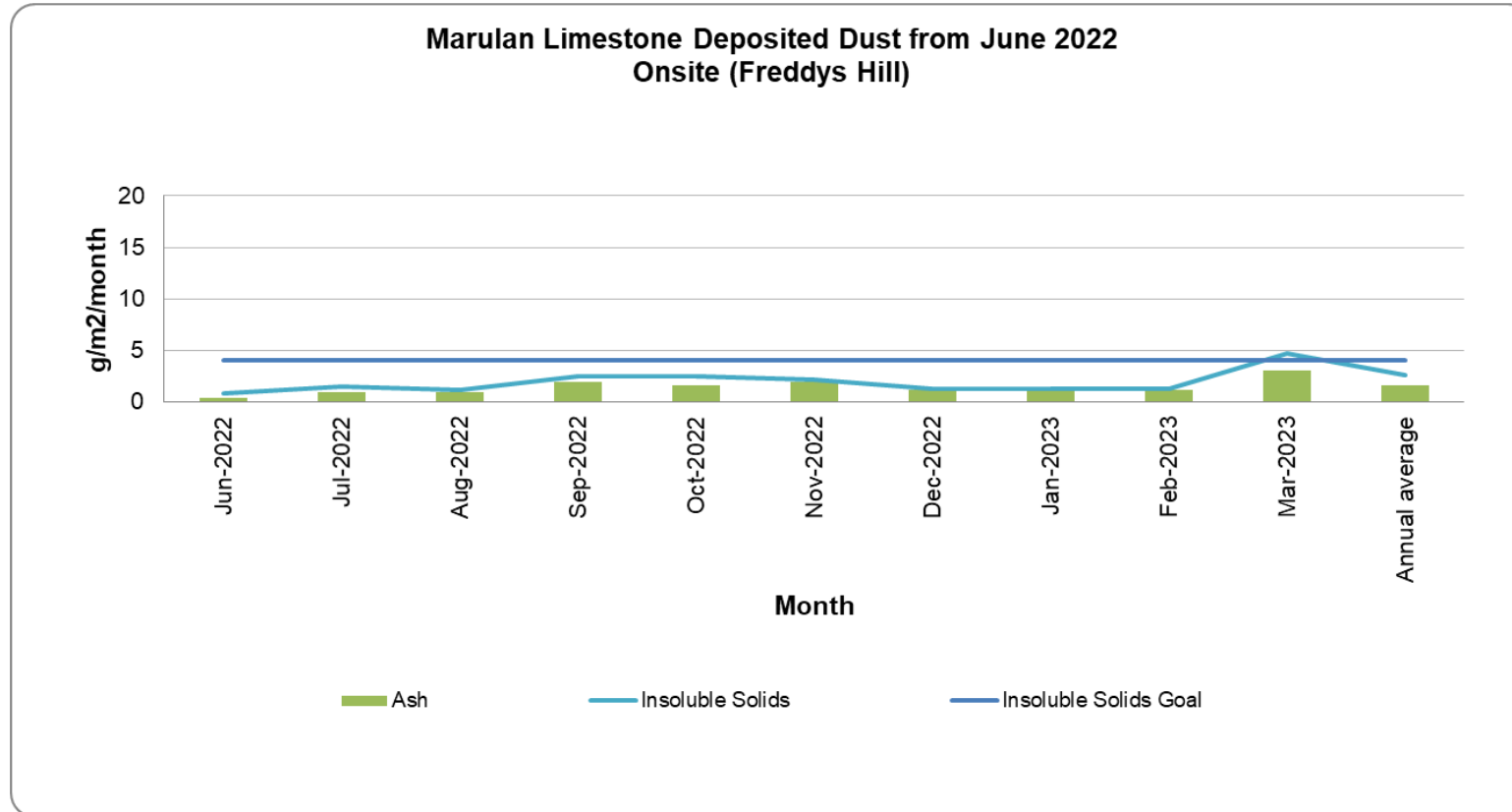


Annual Average goal of 4gm²/month

In compliance

Annual average below goal at the boundary

Air – Dust deposition Site 2

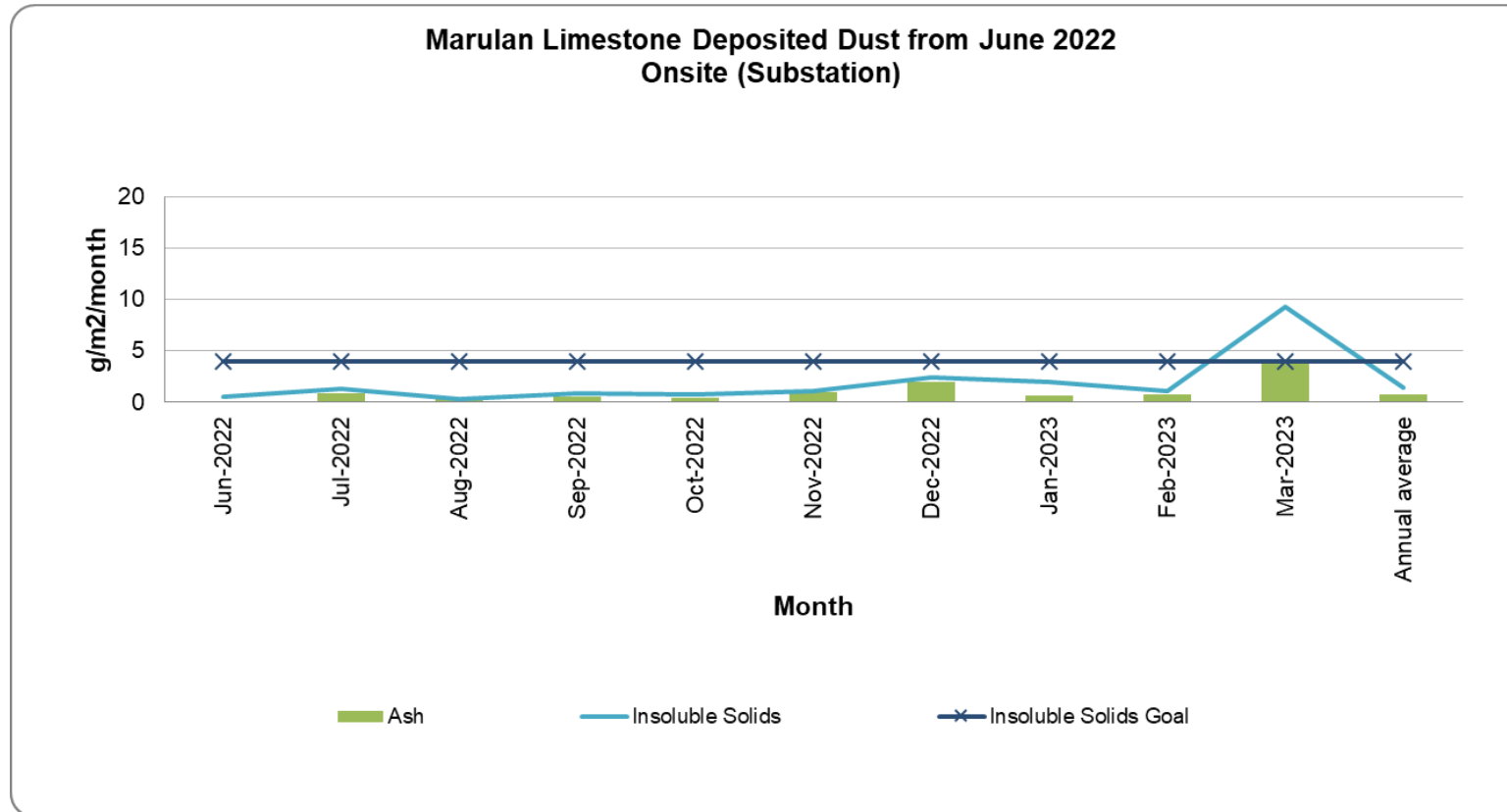


Annual Average goal of 4gm²/month

In compliance

Annual average below goal at the boundary

Air – Dust deposition Site 3

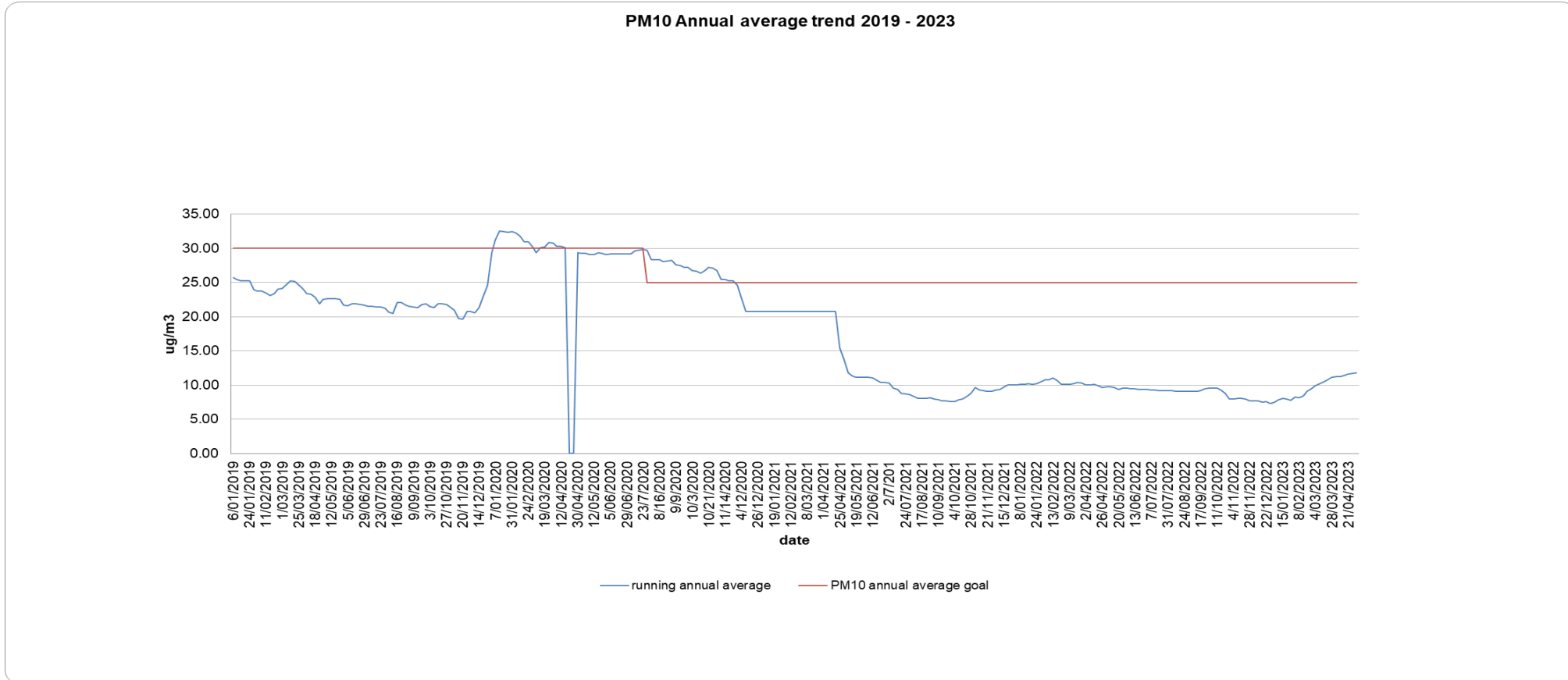


Annual Average goal of 4gm²/month

In compliance

Annual average below goal at the boundary

Air – PM10 annual average

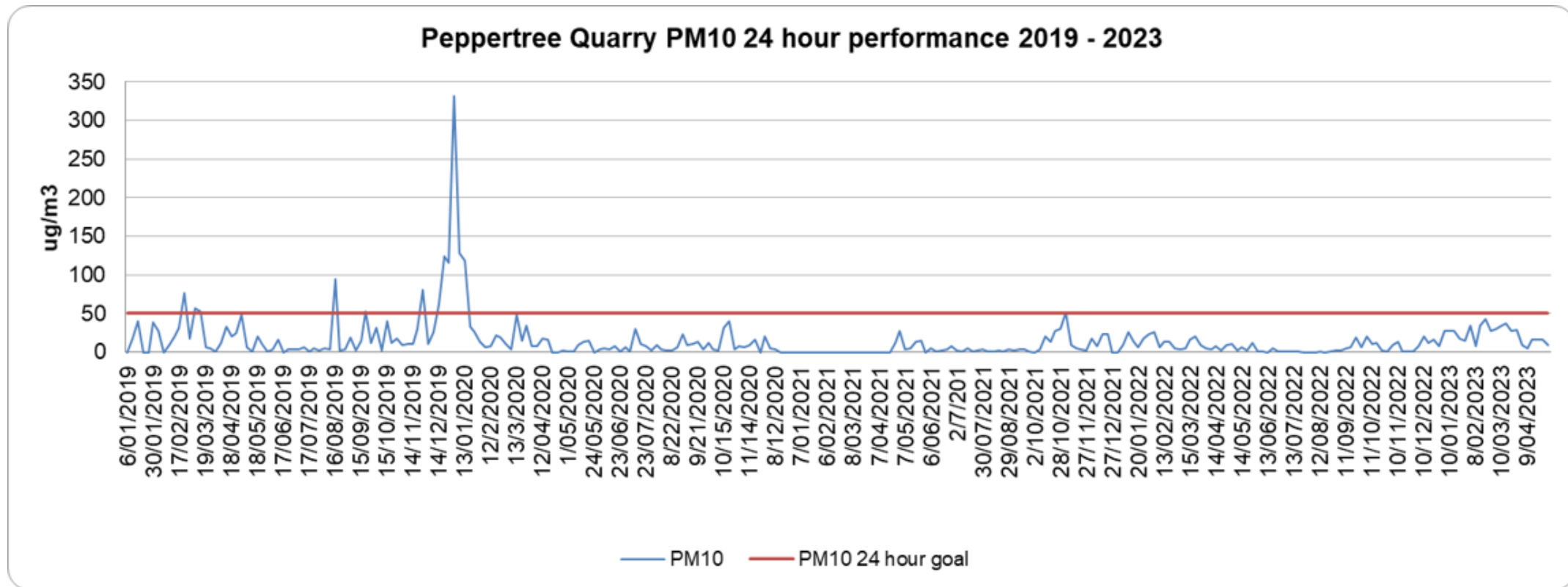


Annual Average goal of 25ug/m³

In compliance

Annual average below goal at the boundary

Air – PM10 24 Hour performance



24 hour goal of 50ug/m³

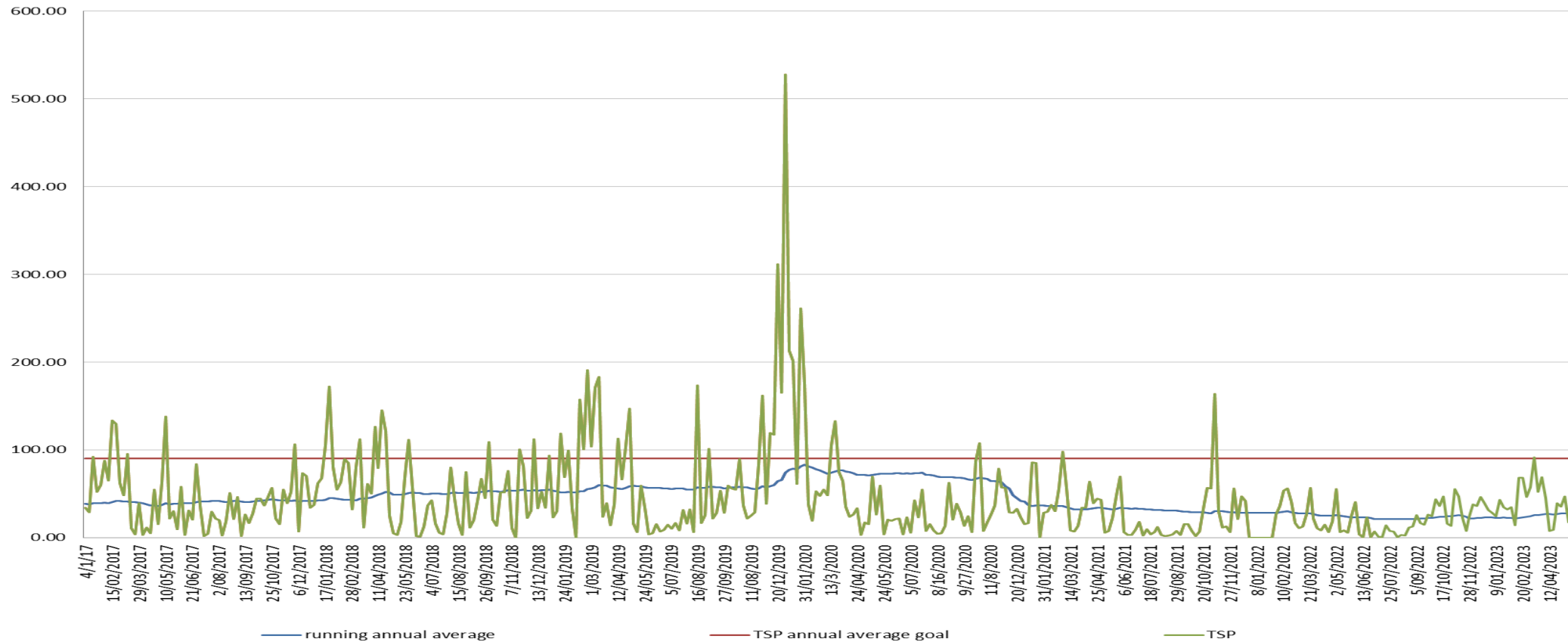
In compliance

Annual average below goal at the boundary

Air – Total Suspended Particulates



TSP Annual average trend 2017 - 2023

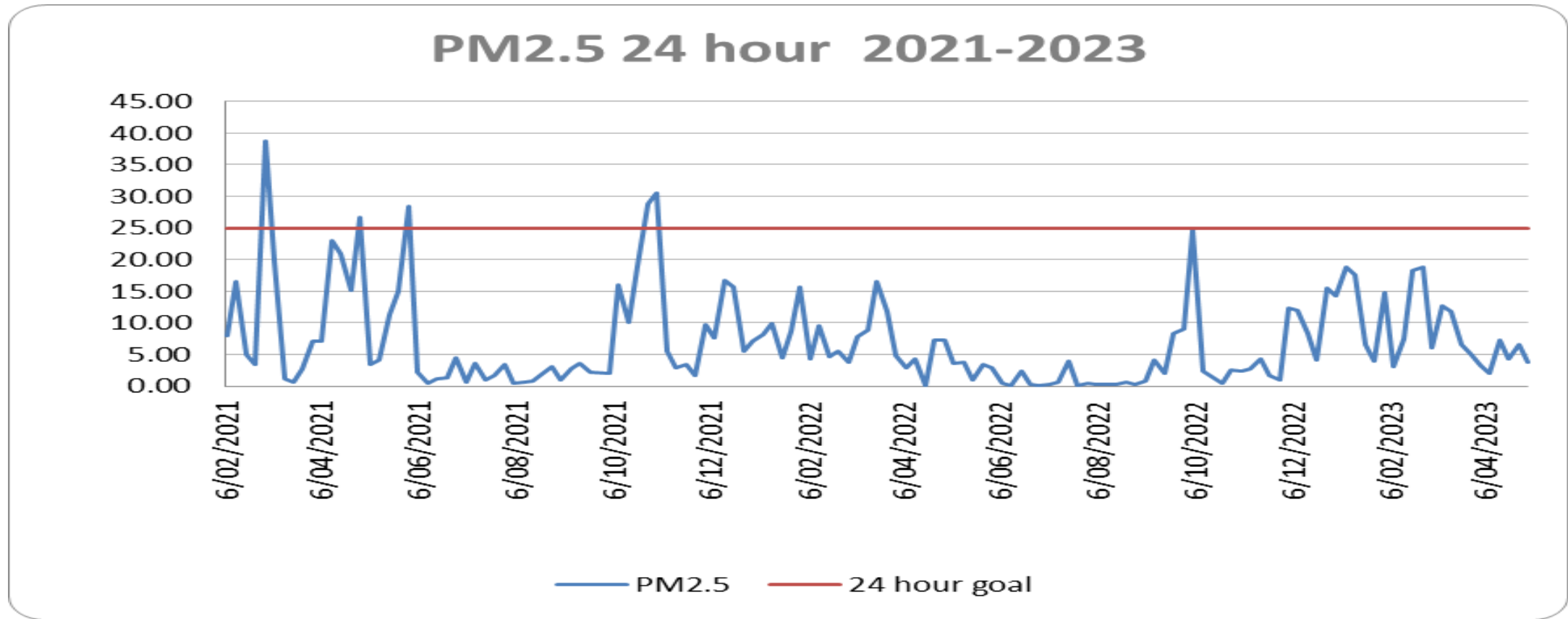


Annual Average goal of 90 $\mu\text{g}/\text{m}^3$

In compliance

Annual average below goal at the boundary

Air – PM2.5



In compliance for the past 3 months.

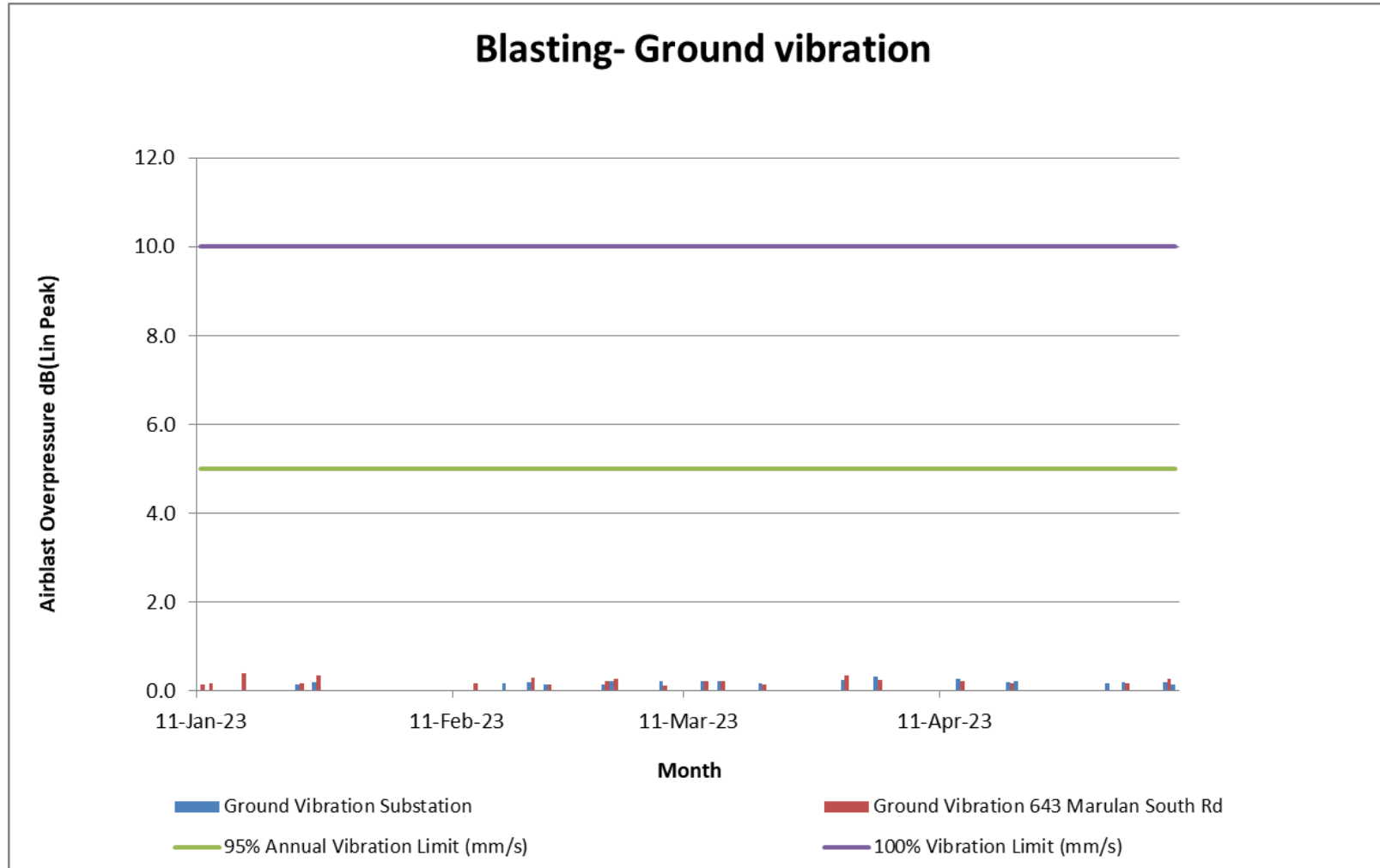
Noise – quarterly monitoring



Monitoring was undertaken on 28th and 29th March 2023 with results pending.

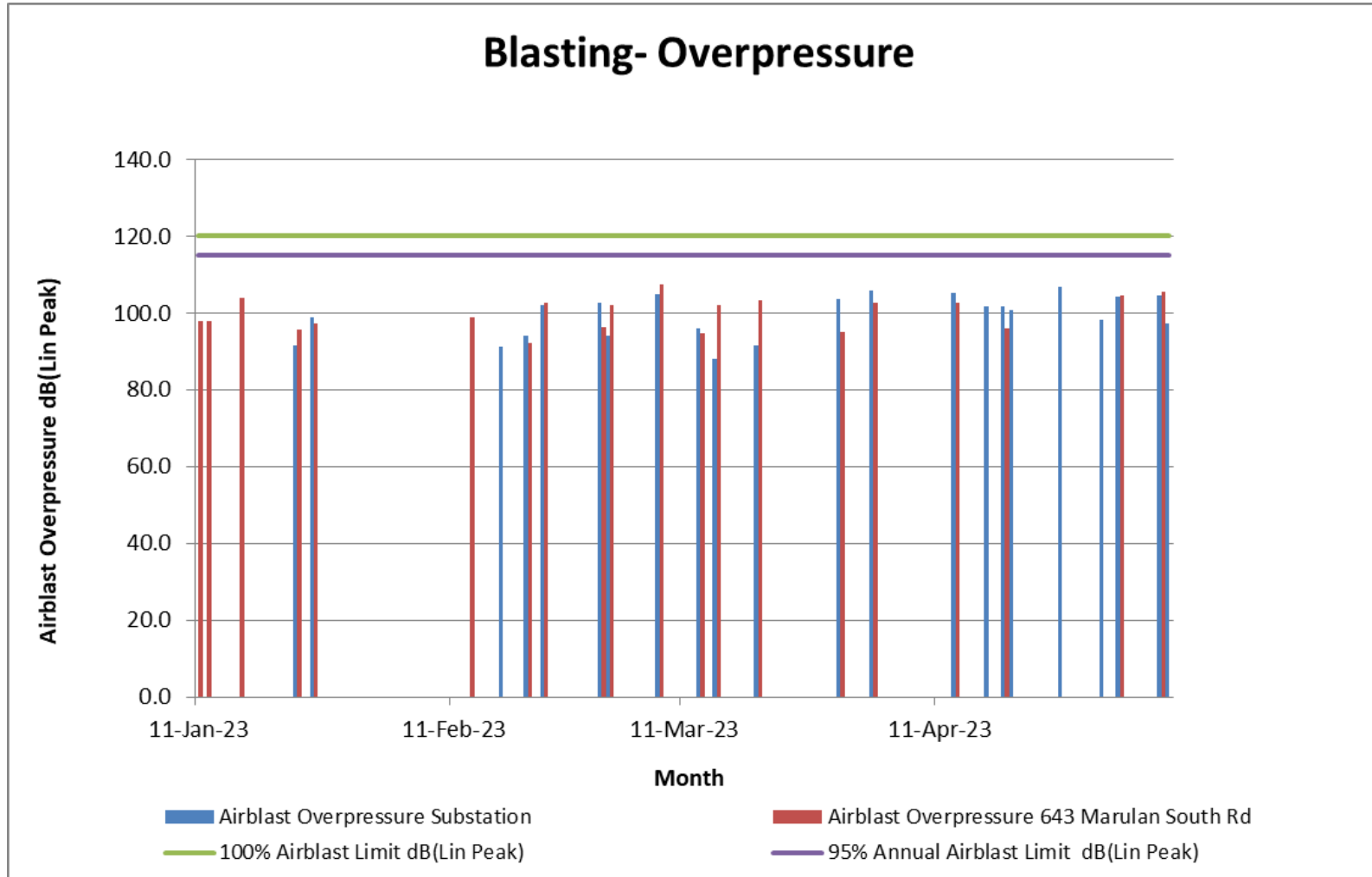
Next round due June 2023.

Blasting - Ground Vibration



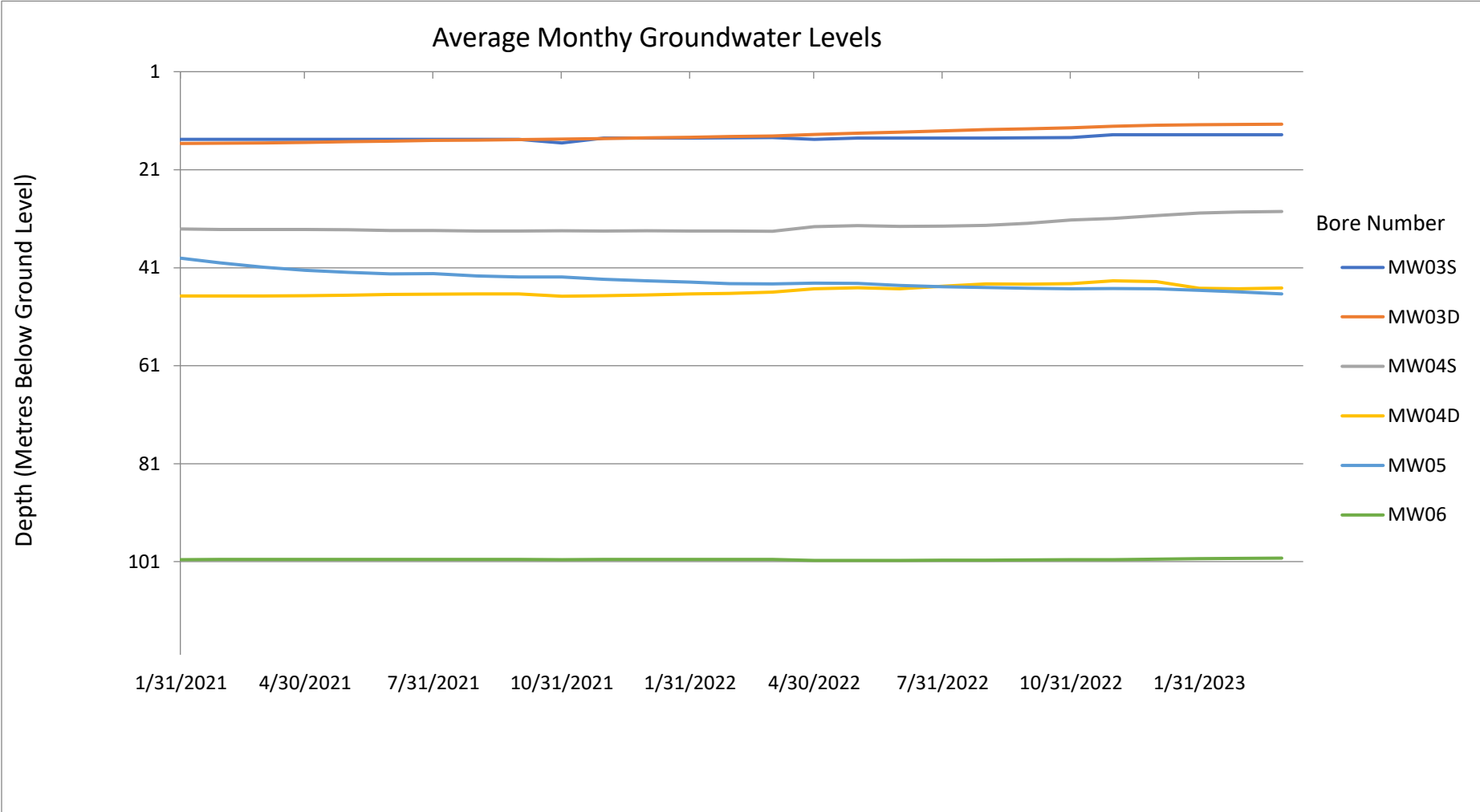
In Compliance

Blasting – Overpressure

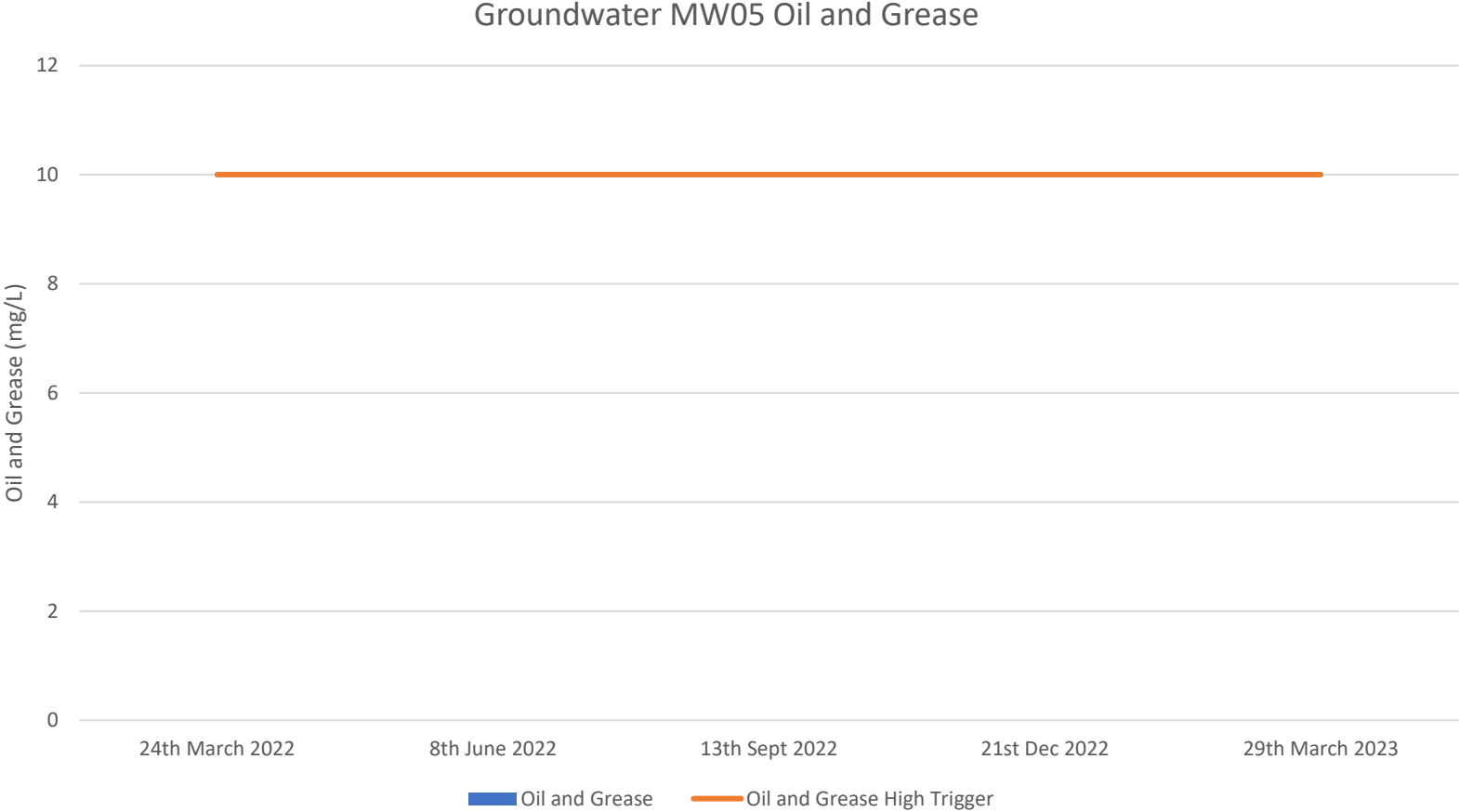


In Compliance

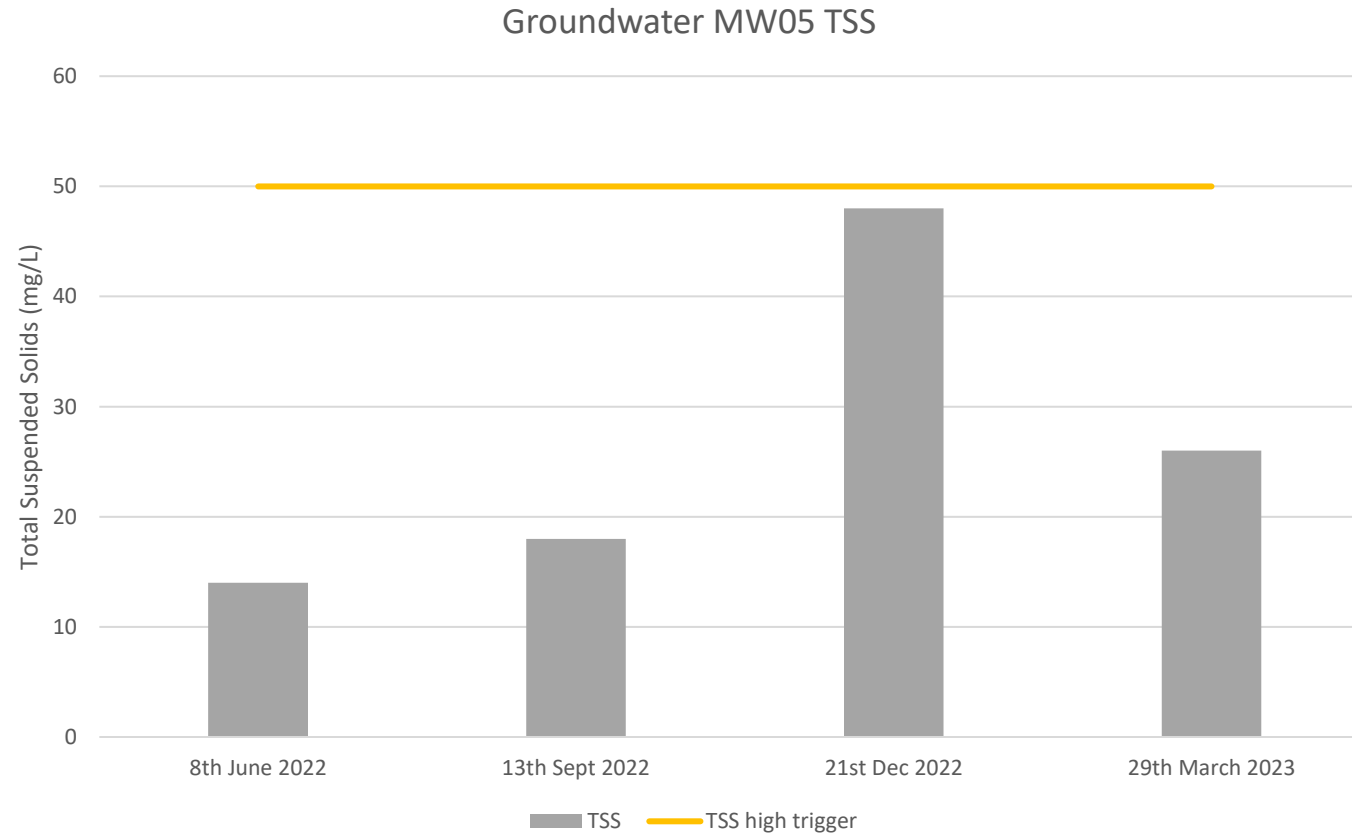
Ground water



Ground water



Ground water



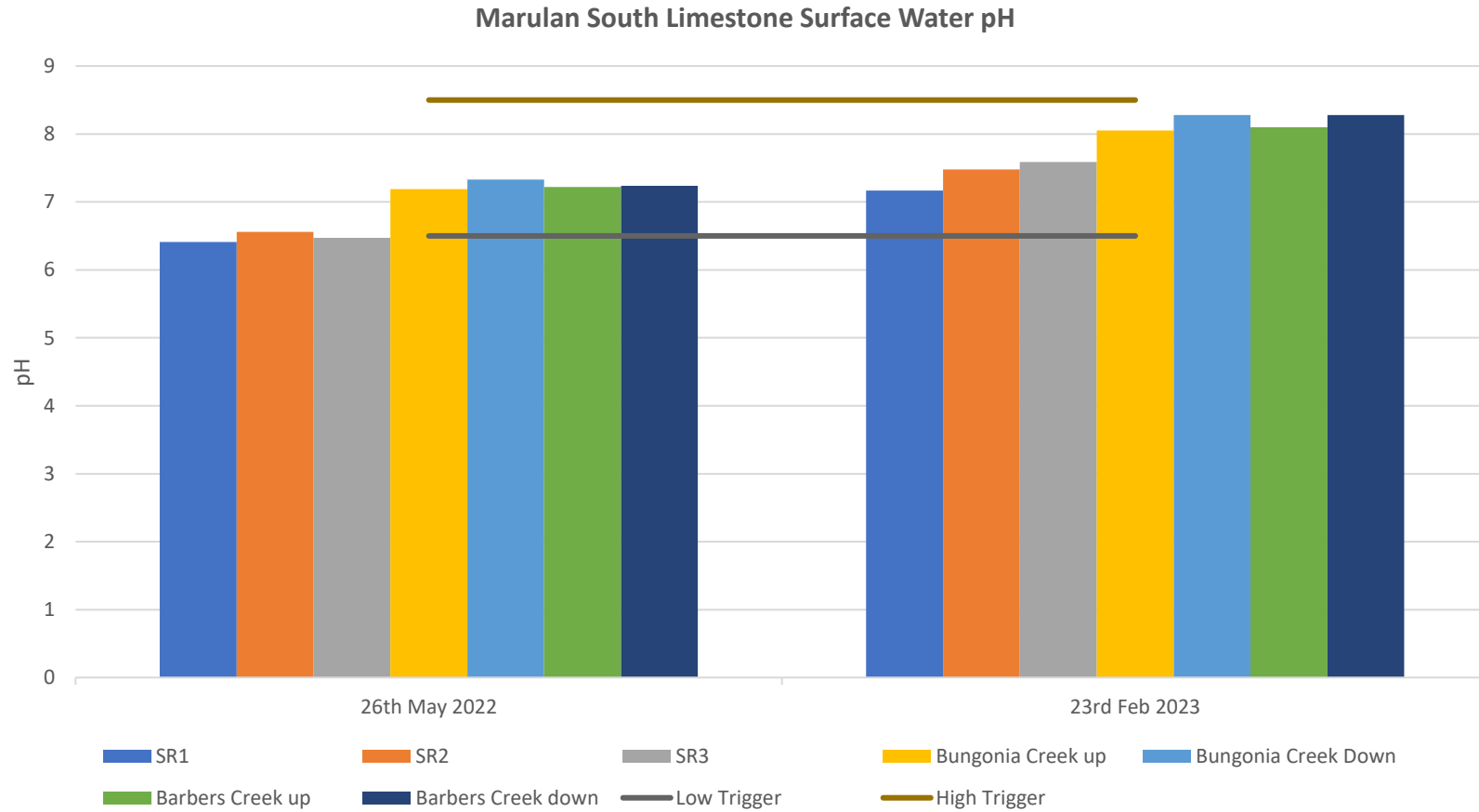
Surface Water



Quarterly monitoring round undertaken 23rd Feb 2023

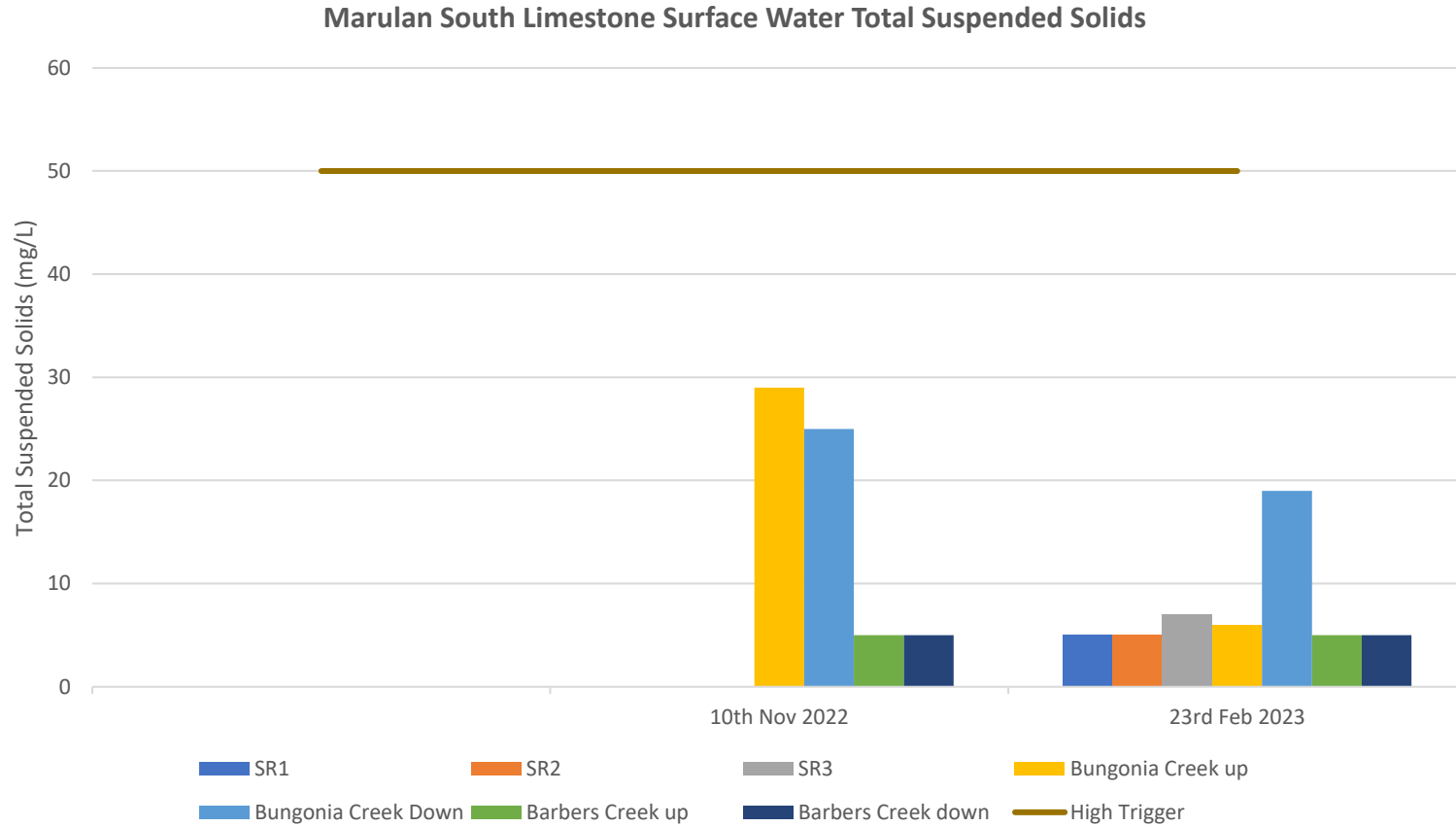
No issues with water supply or quality over the last 3 months

Surface water - pH



Within guideline limits

Surface water – Total Suspended Solids

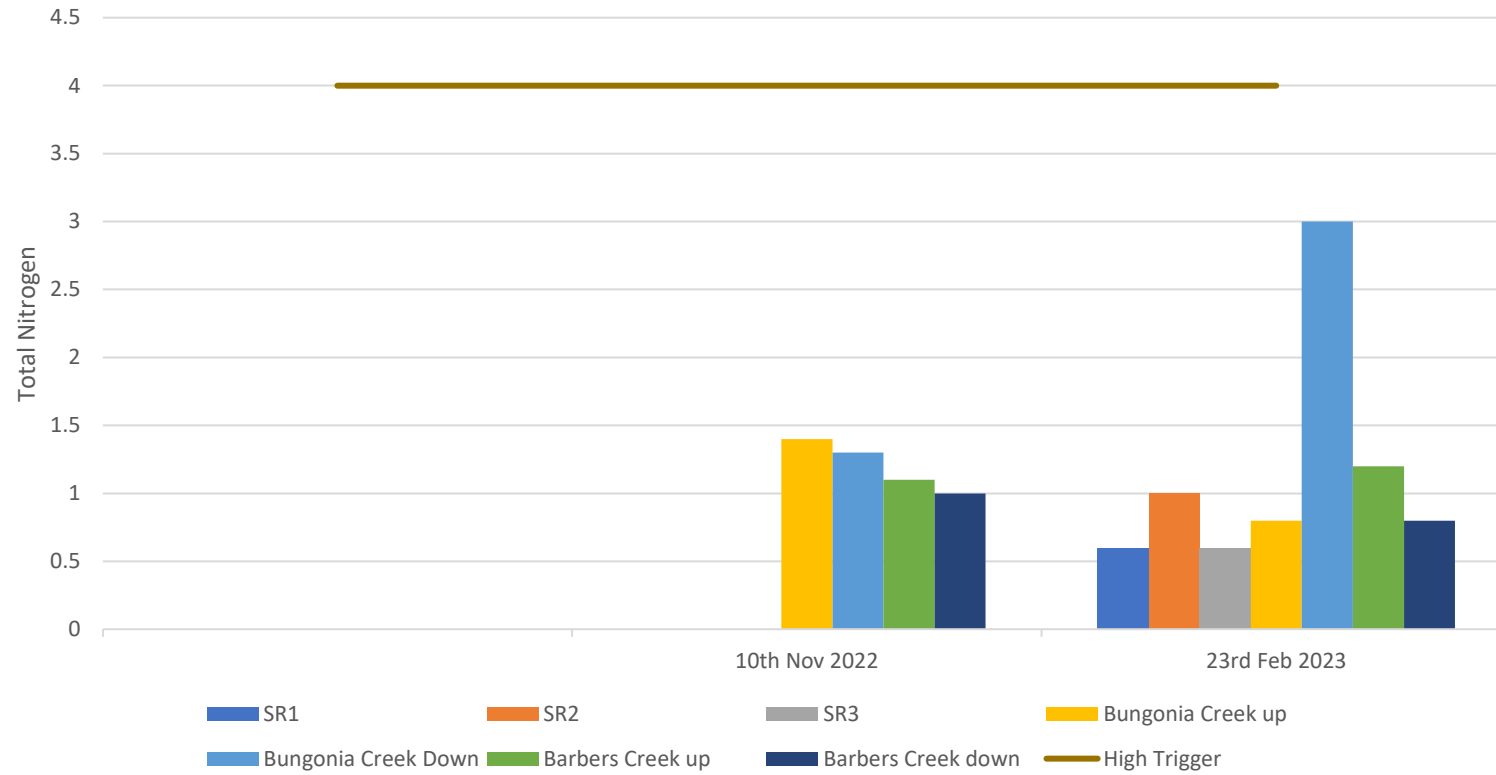


Within guideline limits

Surface water – Nitrogen



Marulan South Limestone Surface Water Nitrogen

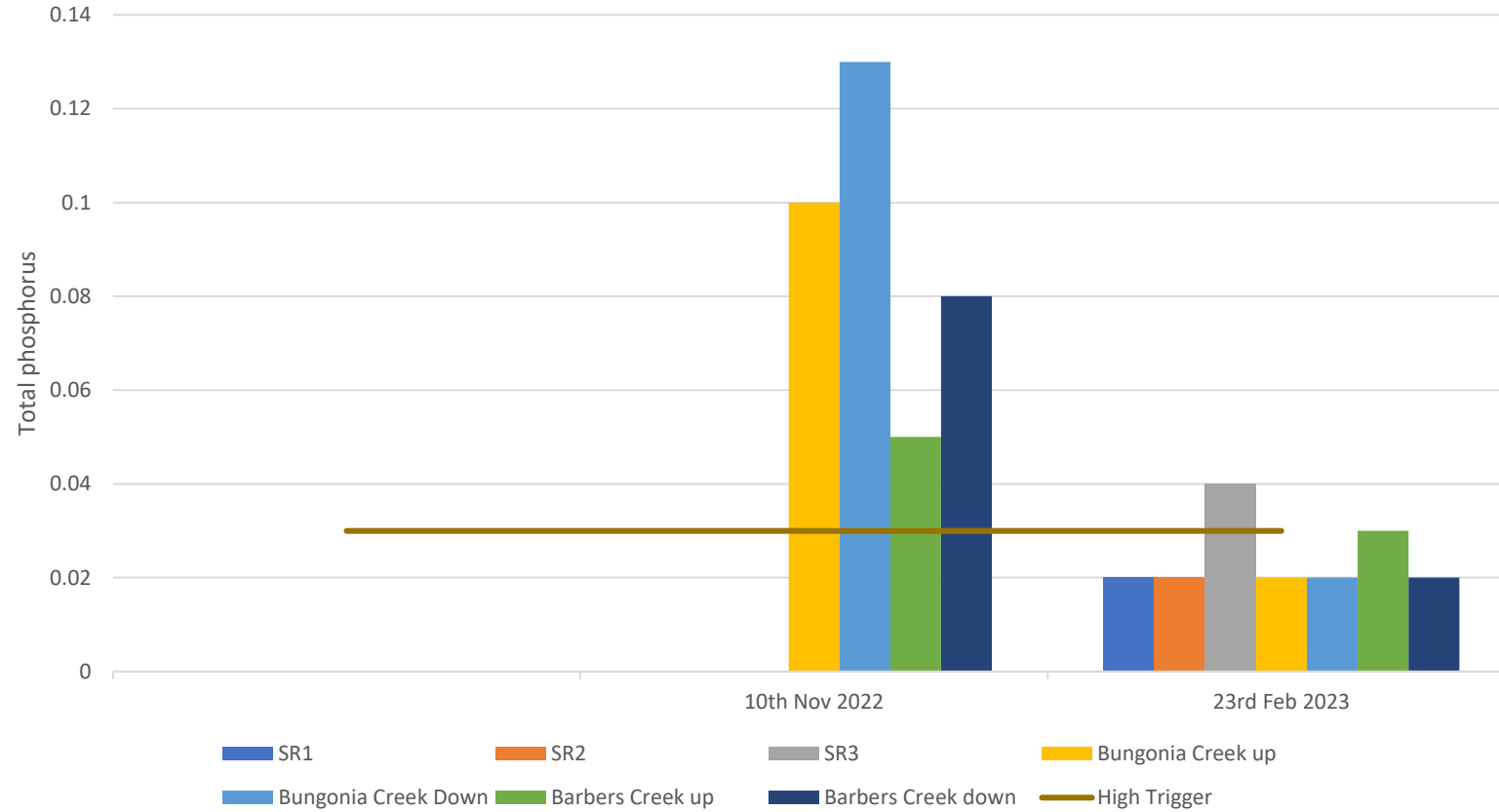


Within guideline limits

Surface water – Phosphorus



Marulan South Limestone Surface Water Phosphorus



All results above guideline limit including both upstream samples

Ecology



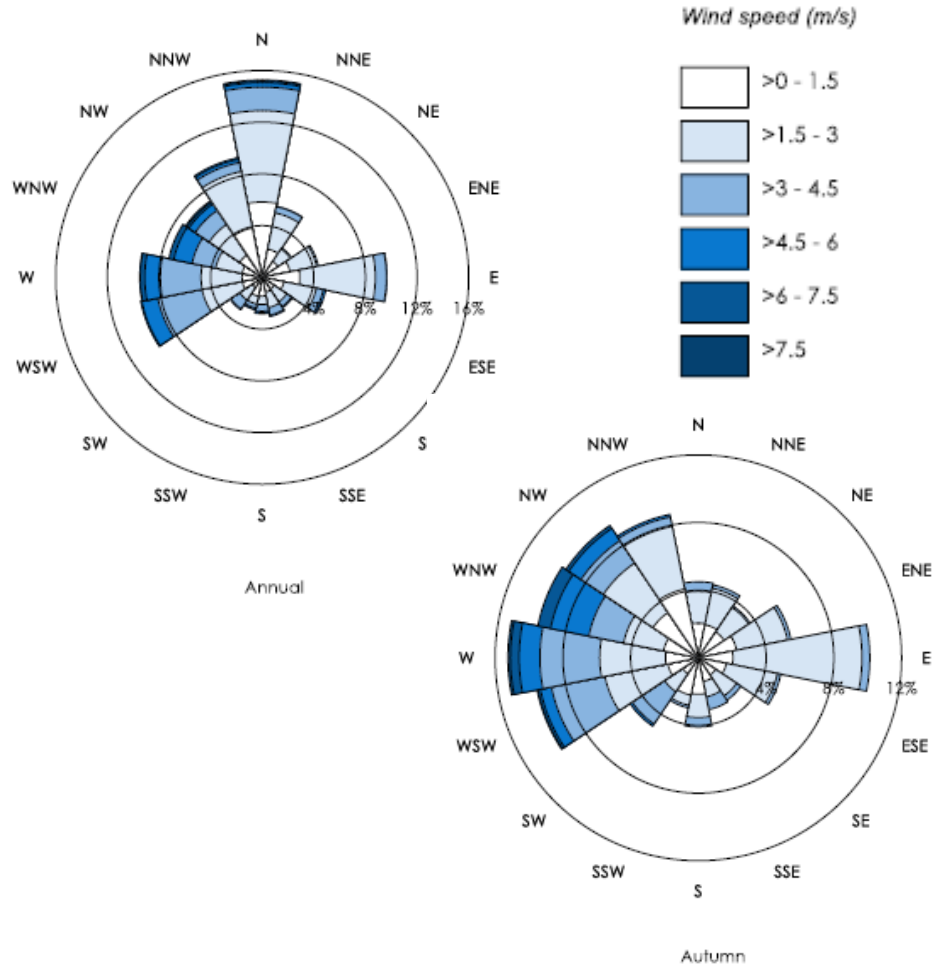
- 4Ha hydromulching planned for Spring
- Weed Control: Pampas
- Pest Control: Goats (39) and Deer (4)
- Wattle and Stringy Bark seed collected from site
- Pest and Weed management Plans updated
- EFA complete



New Weather Station Location



- New weather station located at $-34.763312, 150.01346^1$



07

Stakeholder
Engagement



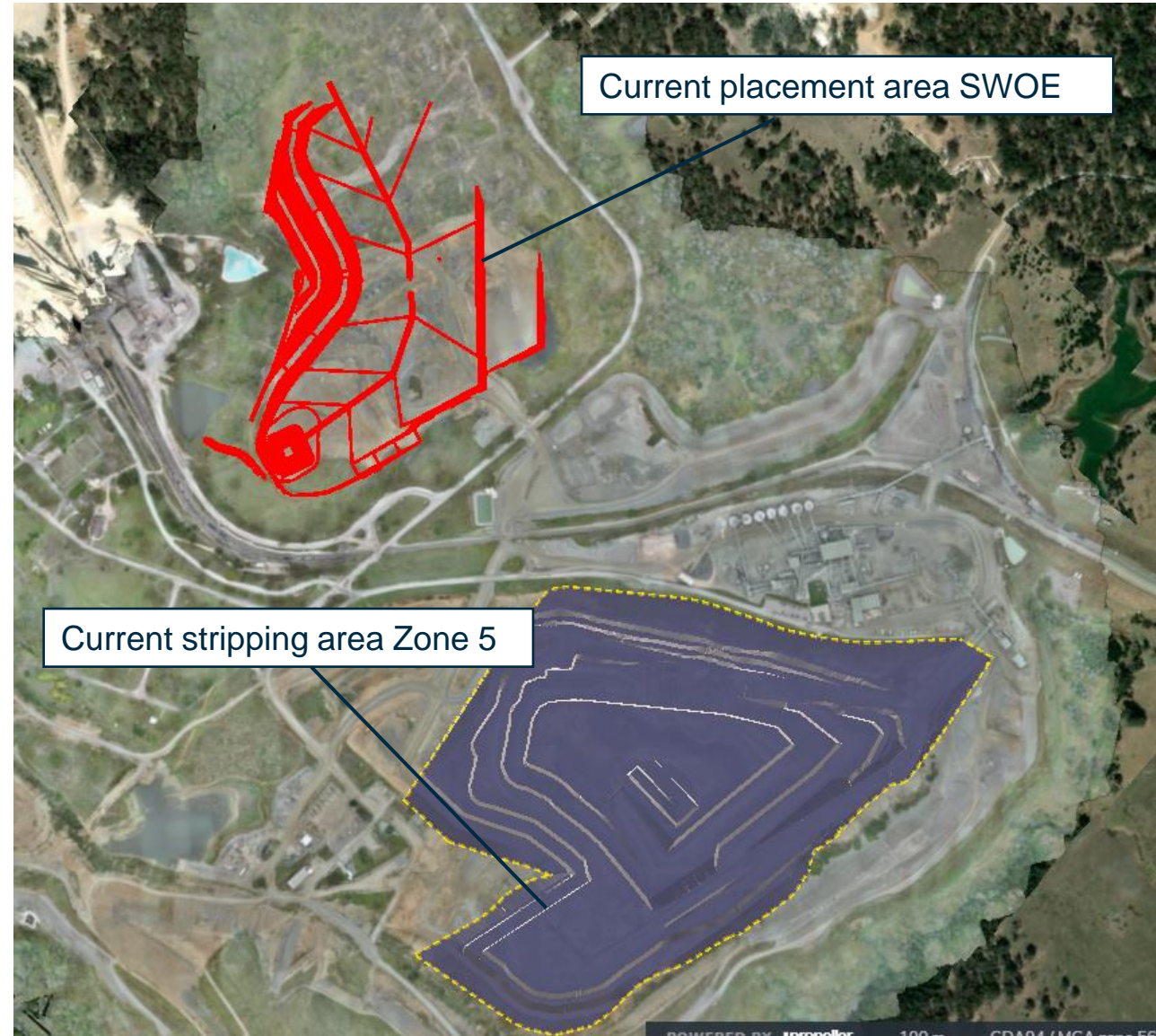
Building
something
great

- Tallong and Marulan Anzac Day
- Tallong Apple Day
- Illawarra/Goulburn careers expo
- IQA site tours
- Continue to print 900 copies of the Newsletter monthly for the Marulan community



08

Operations
Next 3 months





Peppertree Quarry

Safety

Focus on the "life saving commitments"- particular focus for the year is "Injury free in 2023" focus on hazard reporting which will help to reduce incidents. Mental health first aid training

Overburden

Continue to strip in a Southerly direction.

Pit Update

Metso has been realigned to follow overburden stripping in a Southerly direction

Processing (STQ)

Continue to supply aggregates and sand to Sydney metro.

Transport

Commence product despatches by truck from shared road sales stockpile area as per Marulan South Limestone development consent.

People

Two production roles. Operations Manager. Environmental advisor starting this month.

Marulan South Limestone



Safety

Focus on the behavioural safety. Forklift and Fire Extinguisher training.

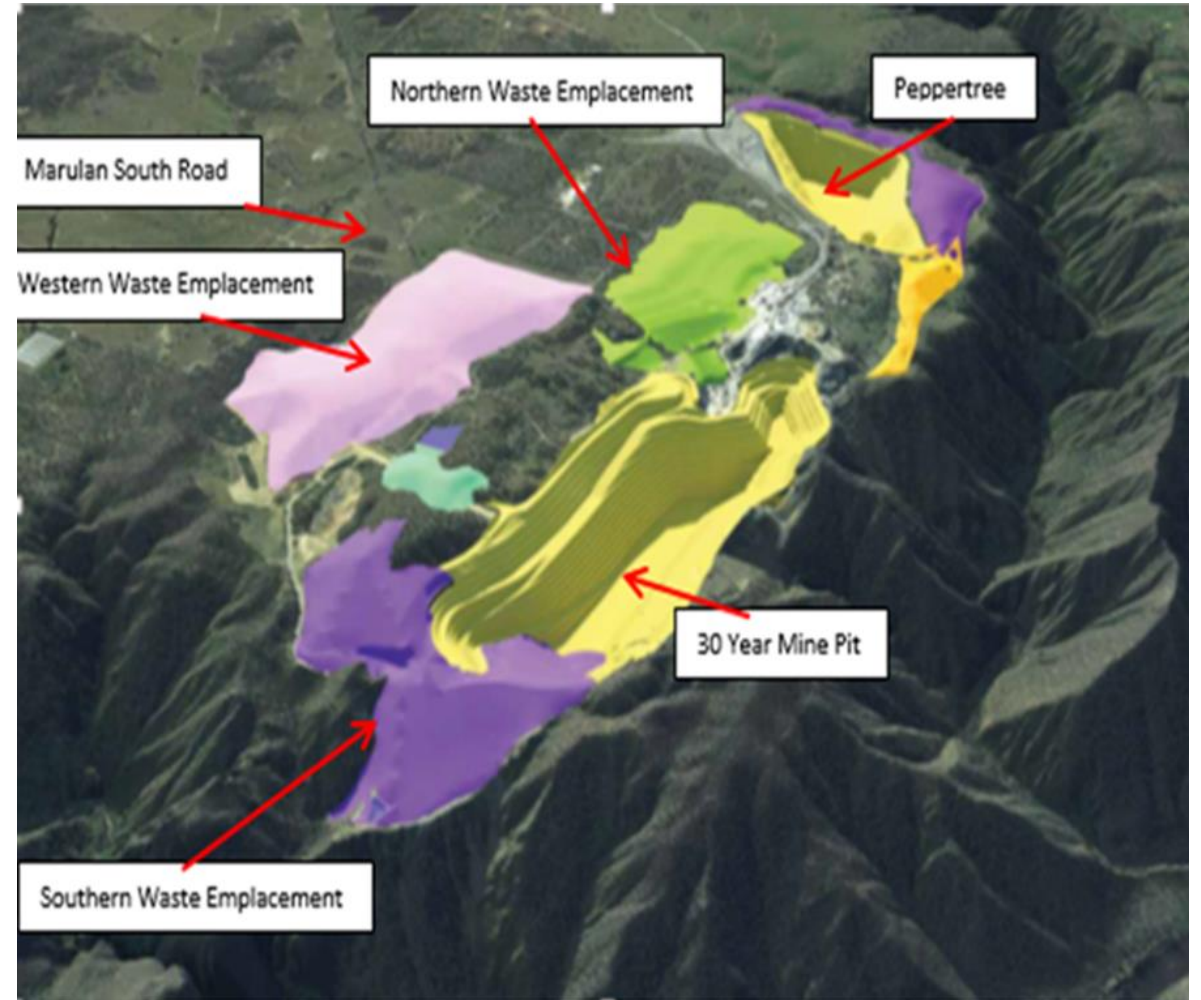
Overburden

Overburden placement to begin, post mining lease approval, extending the western emplacement and adjacent to lime plant Mine optimisation project

Pit Update

Limestone extraction will continue in the North and Central areas of the pit. Overburden from the North East and West of pit continues to be placed in the South and Western overburden emplacements. Awaiting approval mining lease before extension to the west.

People



09

General Business





Other

Next meeting

Aug 2023



**Building
something
great**



Building
something
great

Thanks for your participation