

The background of the slide is a photograph of a city skyline at dusk or dawn. The sky is a pale blue, and the buildings are silhouetted against it. A prominent feature is a tall, cylindrical tower with a glowing top section, likely the CN Tower in Toronto. Other skyscrapers of various architectural styles are visible, some with lights on. In the foreground, there's a dark, overcast sky and a body of water reflecting the city lights.

Community Consultative Committee

Peppertree Quarry & Marulan
South Limestone

February 2023

AGENDA

1. Welcome and introductions
2. Confirmation of minutes and actions
3. Business arising
4. Correspondence
5. Operations over the last 3 months
6. Environmental performance
 - a. Incidents
 - b. Complaints
 - c. Air
 - d. Noise
 - e. Blast
 - f. Water – surface and ground
 - g. Heritage
 - h. Ecology
7. Stakeholder Engagement
7. Stakeholder Engagement
8. Plans for the next 3 months
9. General Business
10. Next meetings - January 2023



01

Welcome and apologies



02

Confirmation of minutes



03

Business arising



04

Correspondence

Nov 2022 – Jan 2023



Peppertree Quarry

Department of Planning and Environment

Submission of Rehab Bond calculation

EPA

Nil

Resource Regulator

Slope stability audit

Psychosocial risks

Goulburn Mulwaree Council

Nil

Geoff Clark

weather data reviews – weather station monthly reviews

Marulan South Limestone

Department of Planning and Environment

- Environmental Management Plans (EMP's) have been approved and SSD commenced 1st January 2023

EPA

- Environmental Protection Licence amendments have been submitted

Resource Regulator

- Mine and dump stages for Rehabilitation Management Plan (RMP) have been drafted. Waiting on final approval of mining lease before submission of RMP
- Anticipating approval of the updated mining lease shortly

Goulburn Mulwaree Council

- Work ongoing on designs of upgrade for Marulan South Road
- Agreement to vary daytime hourly laden truck movements

05

Operations
Past 3 months



Peppertree Quarry

Safety

No LTI/MTI over the last three months. Hazard reporting has improved.

Overburden

Overburden is being stripped focusing in a Southerly direction circa 1.5 million m³ has been moved. We will move into the next stage in September 2023 there will be a further 1.2 million m³ in this phase.

Pit Update

Contract crushing on the RL525, in pit crushing will continue in a southerly direction directly following stripping.

Processing (STQ)

Production is still restricted because of train cancellations due to shortage of rail crews.

Rain has caused some aggregate and road base production issues.

People

STQ supervisor has been filled, leading hand position, pit supervisor, temporary roles in both STQ and Primary. Maintenance manager now onboard.

Marulan South Limestone

Safety

Focus on training including first aid, mental health first aid, safety leadership, operator specialist HME, confined spaces and working at heights training. Psychosocial hazards risk assessment, site signage audit and two-way upgrade from analogue to digital.

Overburden

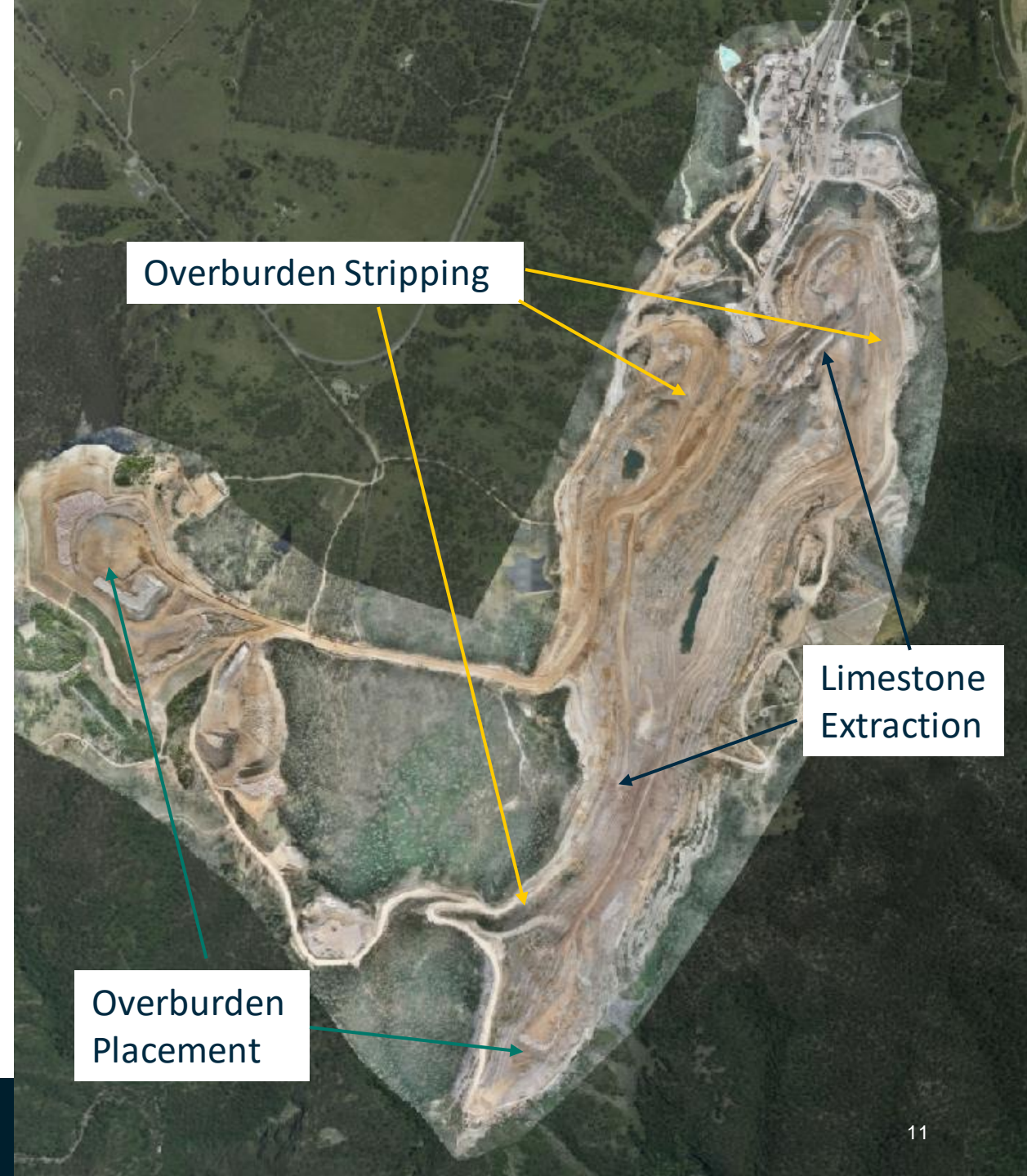
Overburden stripping has been progressing at a steady 375,000t/month

Limestone Extraction

Extracting at a rate of 250,000t/month.

People

Steven Holgate and Stephen McDonald celebrated a 10-year service milestones. Also celebrated Dalton O'Connells Worldskills Gold Medal Achievement with a ceremony. Two new mechanical apprentices onboard and one production operator.



06

Environmental Performance



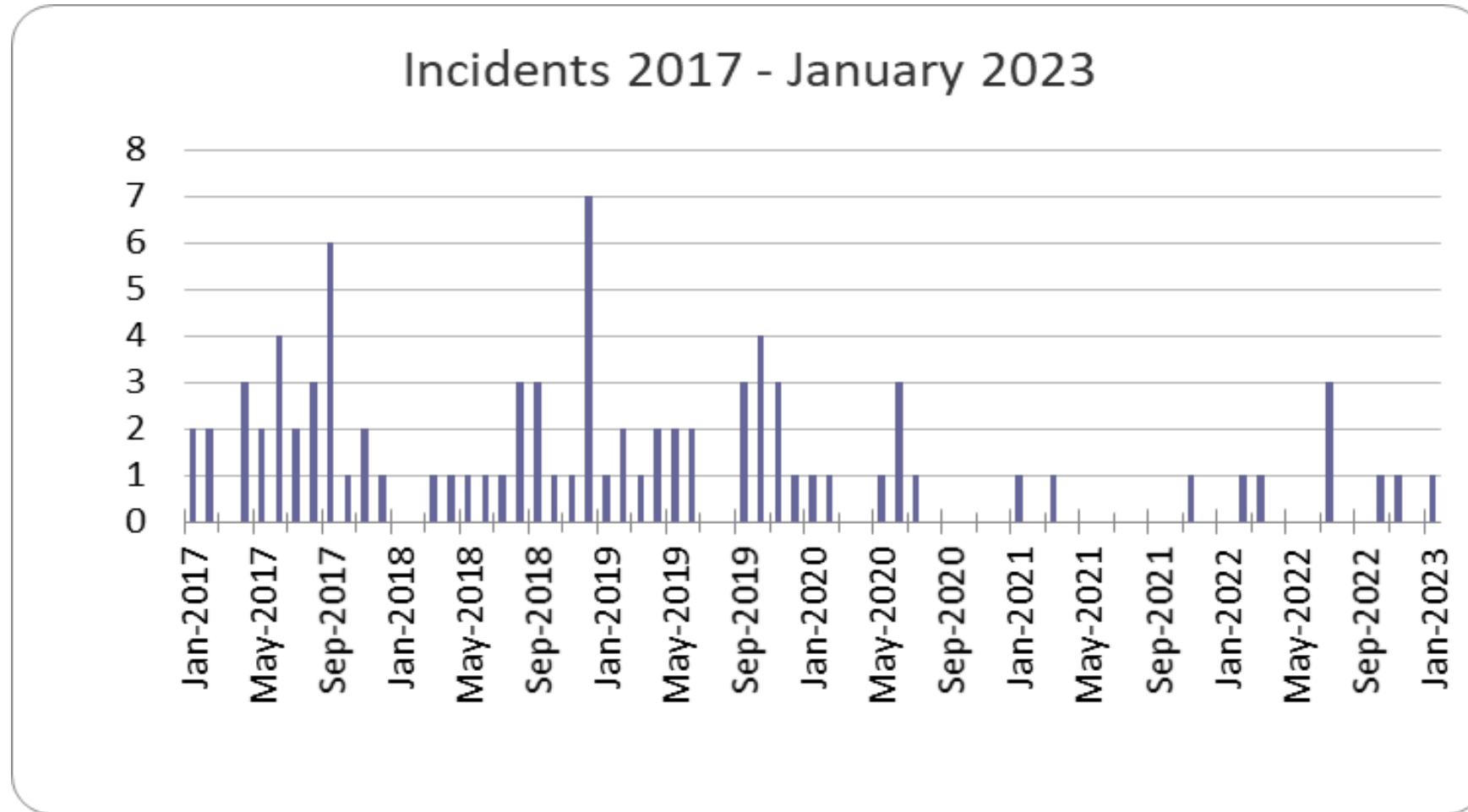
06.1

Environmental
Performance

Peppertree Quarry

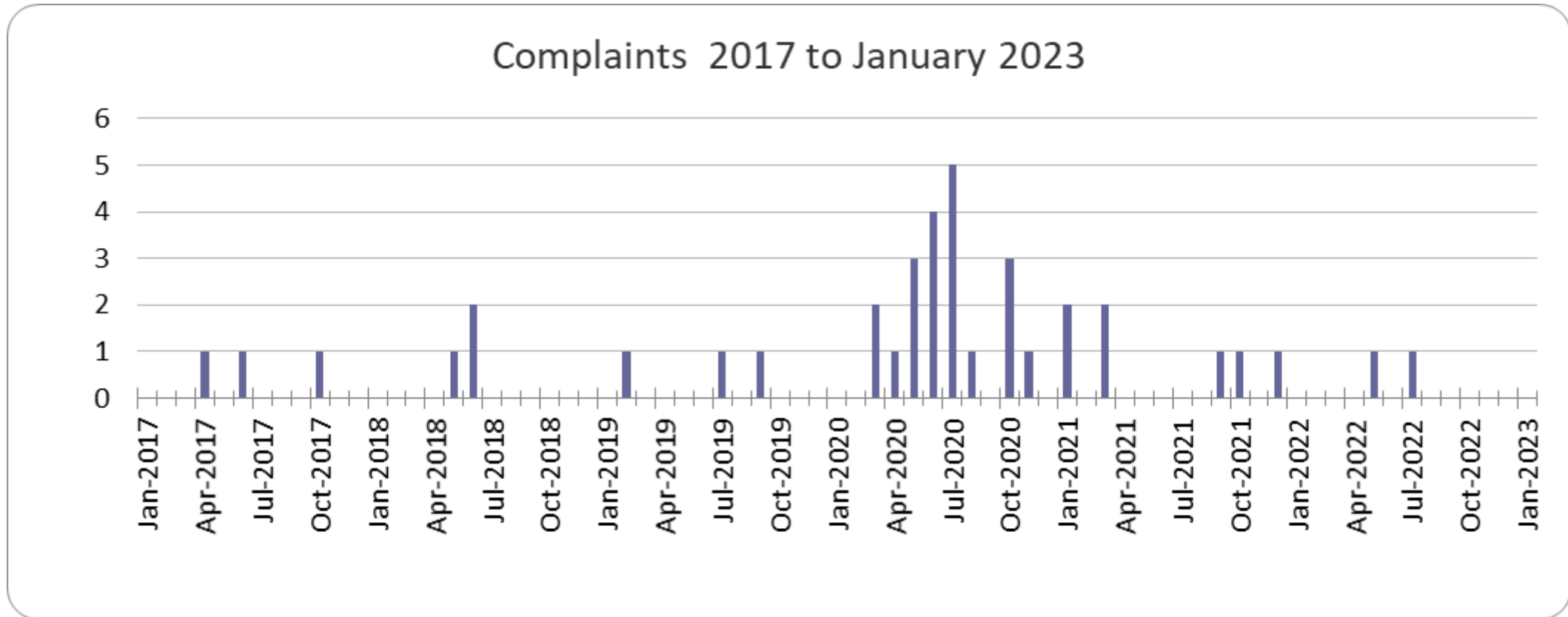


Environmental Incidents Jan 2017 to Jan 2023



Nov- 1 (1 x localised oil spill), Dec- nil, Jan- 1 (1 x localised oil spill)

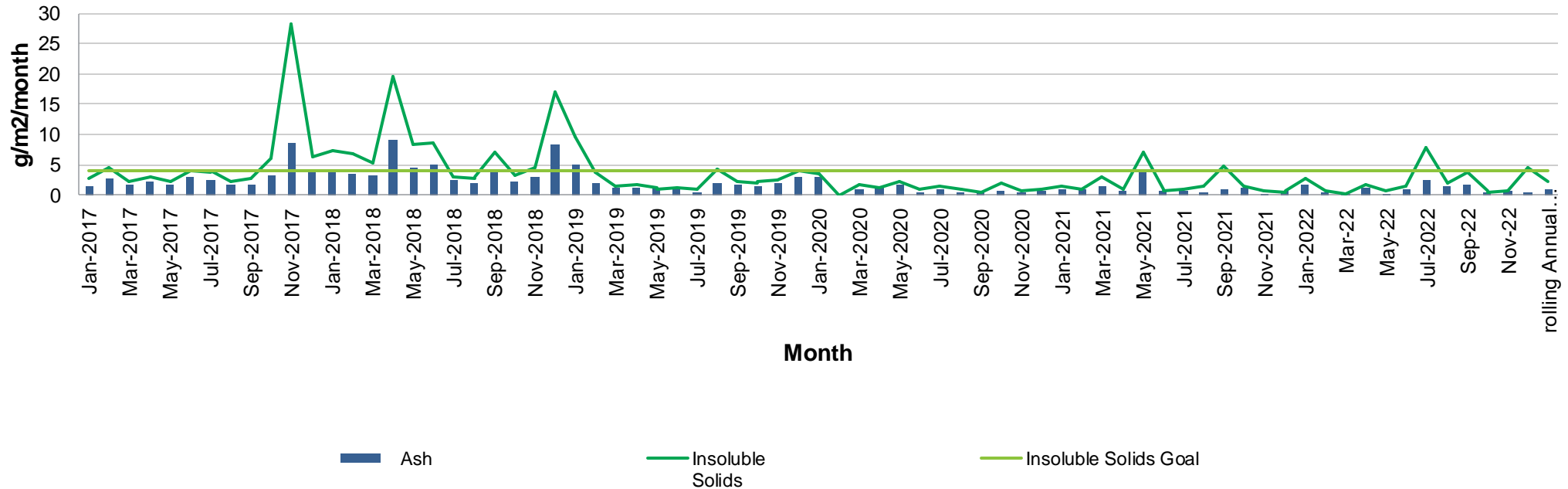
Environmental Complaints Jan 2017 to Jan 2023



> Nov- nil, Dec- nil, Jan- nil

Air – Dust deposition Gauge D1

Peppertree Quarry Deposited Dust 2017 - 2023
Onsite (NW boundary)



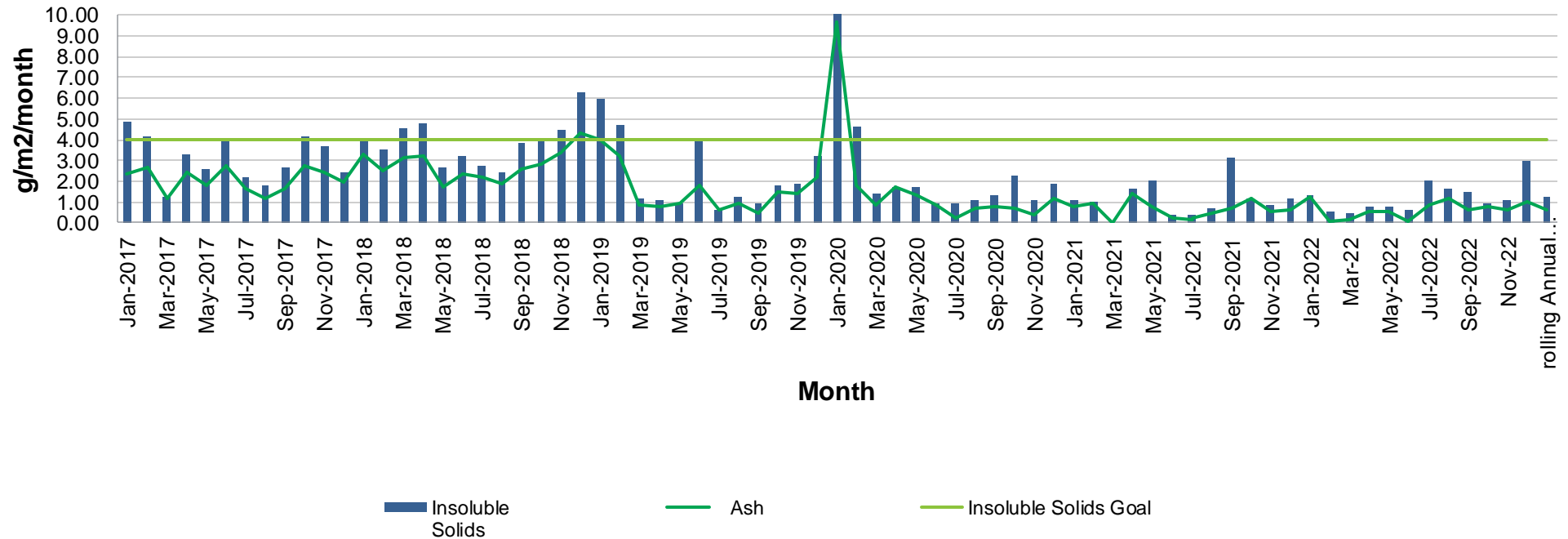
Annual Average goal of 4gm2/month

In compliance

Annual average below goal at the boundary

Air – Dust Deposition Gauge D2

Peppertree Quarry Deposited Dust 2017 - 2023
683 Marulan South Road



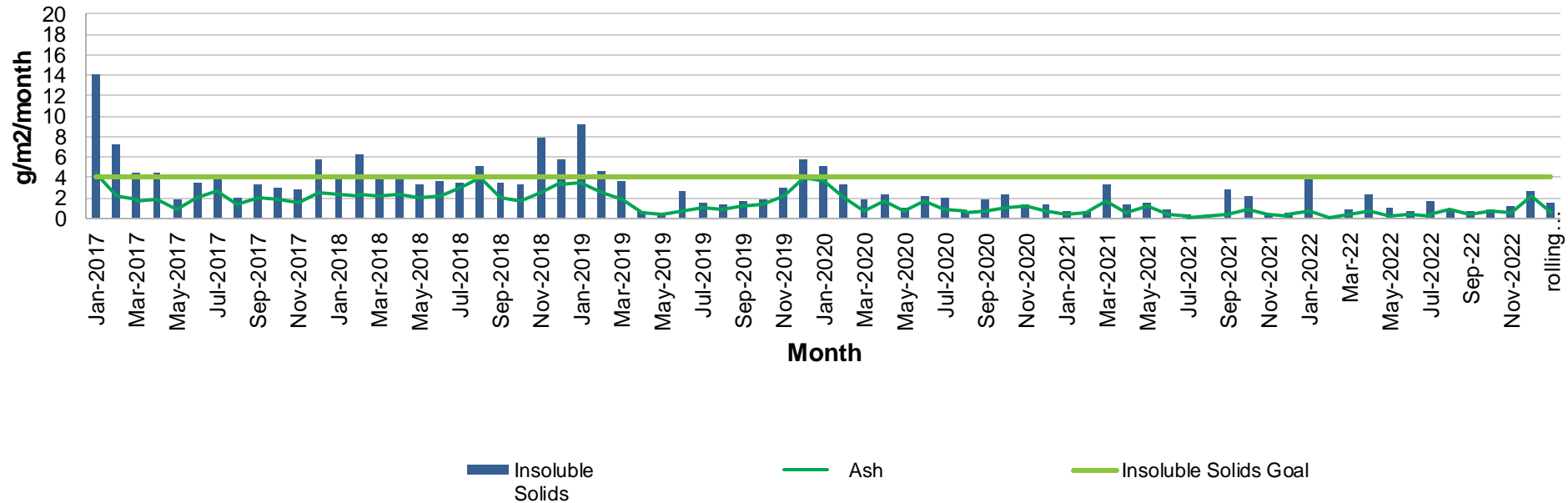
Annual Average goal of 4gm2/month

In compliance

Annual average below goal at the boundary

Air – Dust Deposition gauge D3

Peppertree Quarry Deposited Dust 2017 - 2023
432 Long Point Road, Tallong



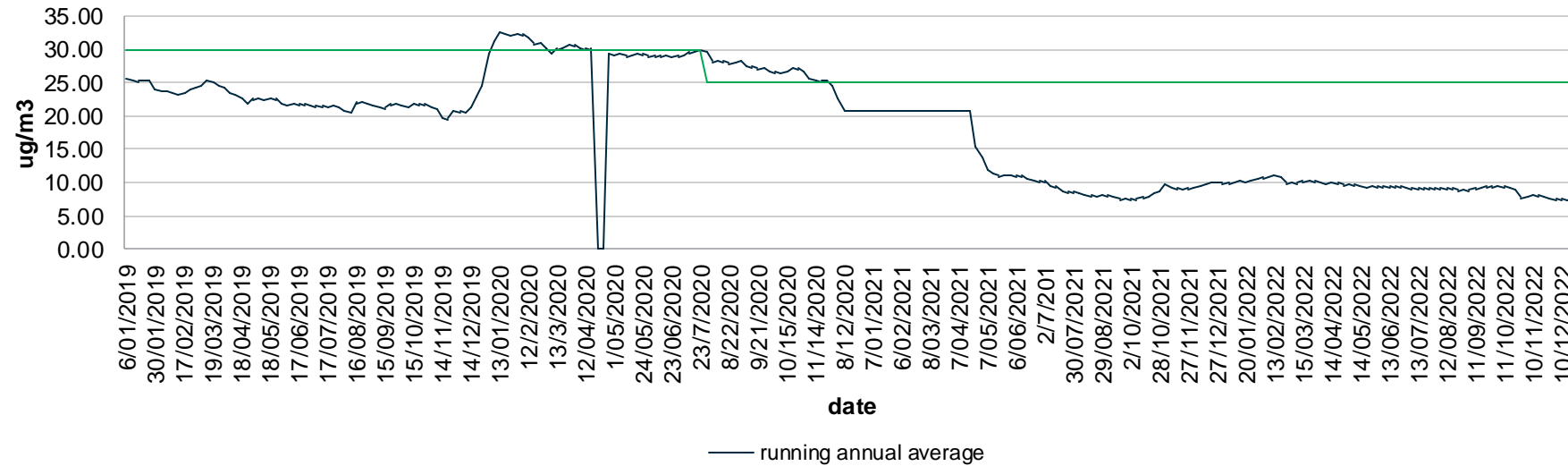
Annual Average goal of 4gm²/month

In compliance

Annual average below goal at the boundary

Air – PM10 annual average

PM10 Annual average trend 2019 - 2022



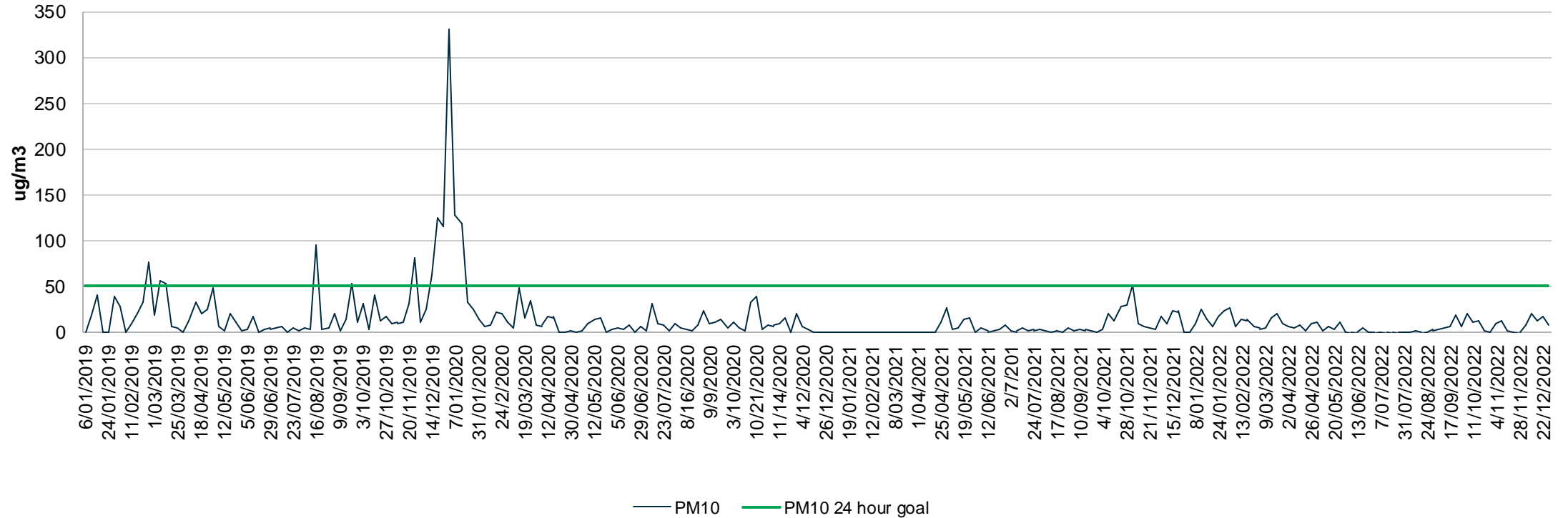
Annual Average goal of 25ug/m3

In compliance

Annual average below goal at the boundary

Air – PM10 24 Hour performance

Peppertree Quarry PM10 24 hour performance 2019 - 2022



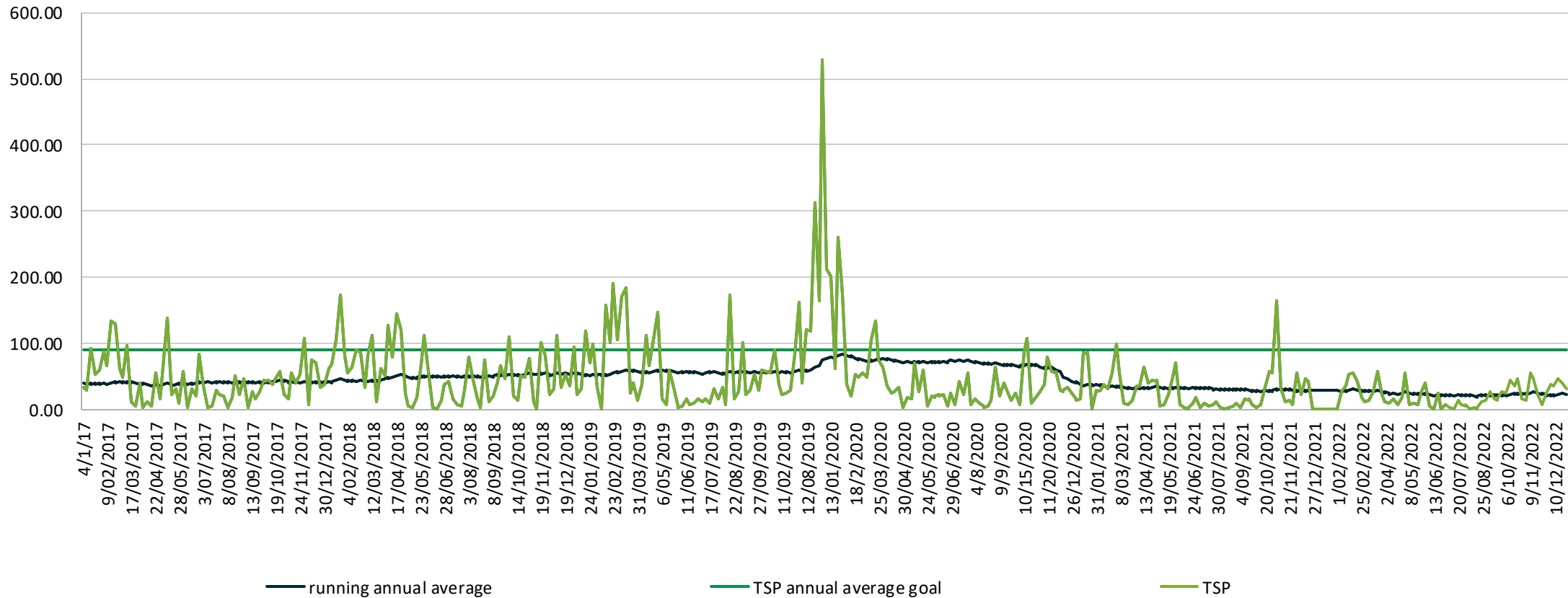
24 hour goal of 50ug/m3

In compliance

Annual average below goal at the boundary

Air – Total Suspended Particulates

TSP Annual average trend 2017 - 2022



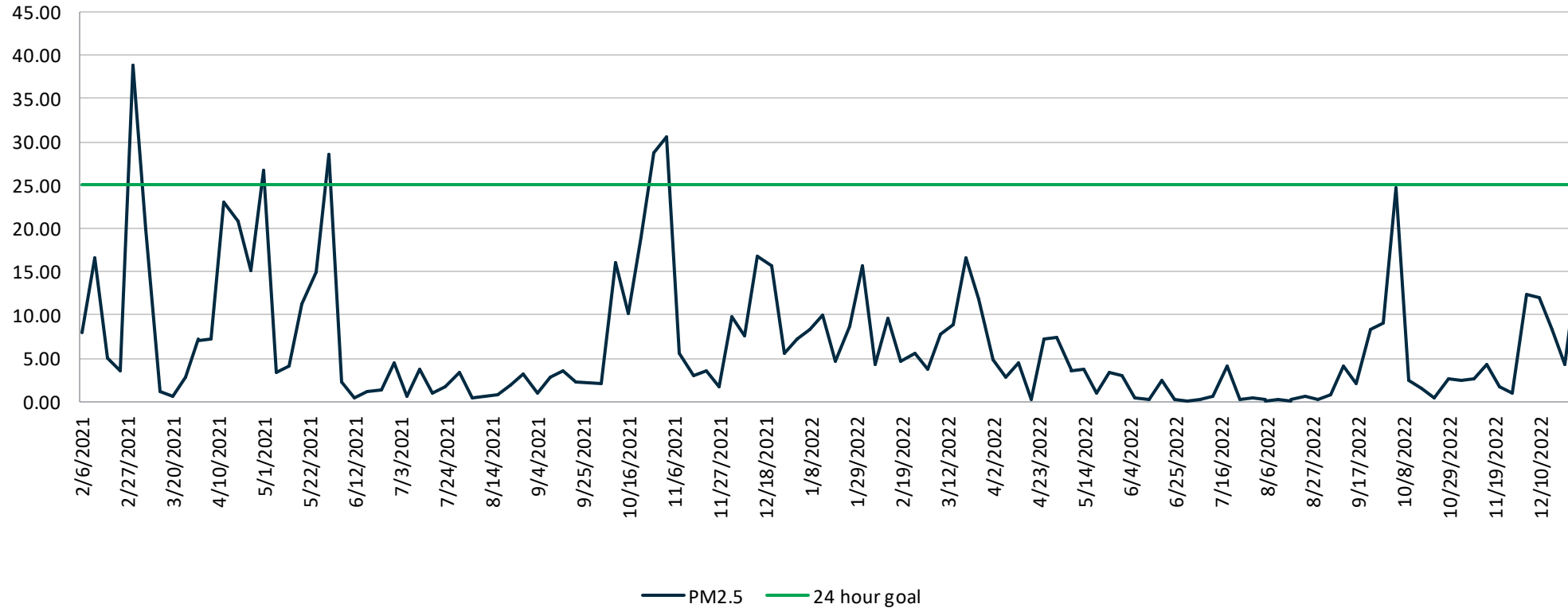
Annual Average goal of 90ug/m3

In compliance

Annual average below goal at the boundary

Air – PM2.5

PM2.5 24 hour 2021-2022



In compliance for the past 3 months.

Noise – quarterly monitoring

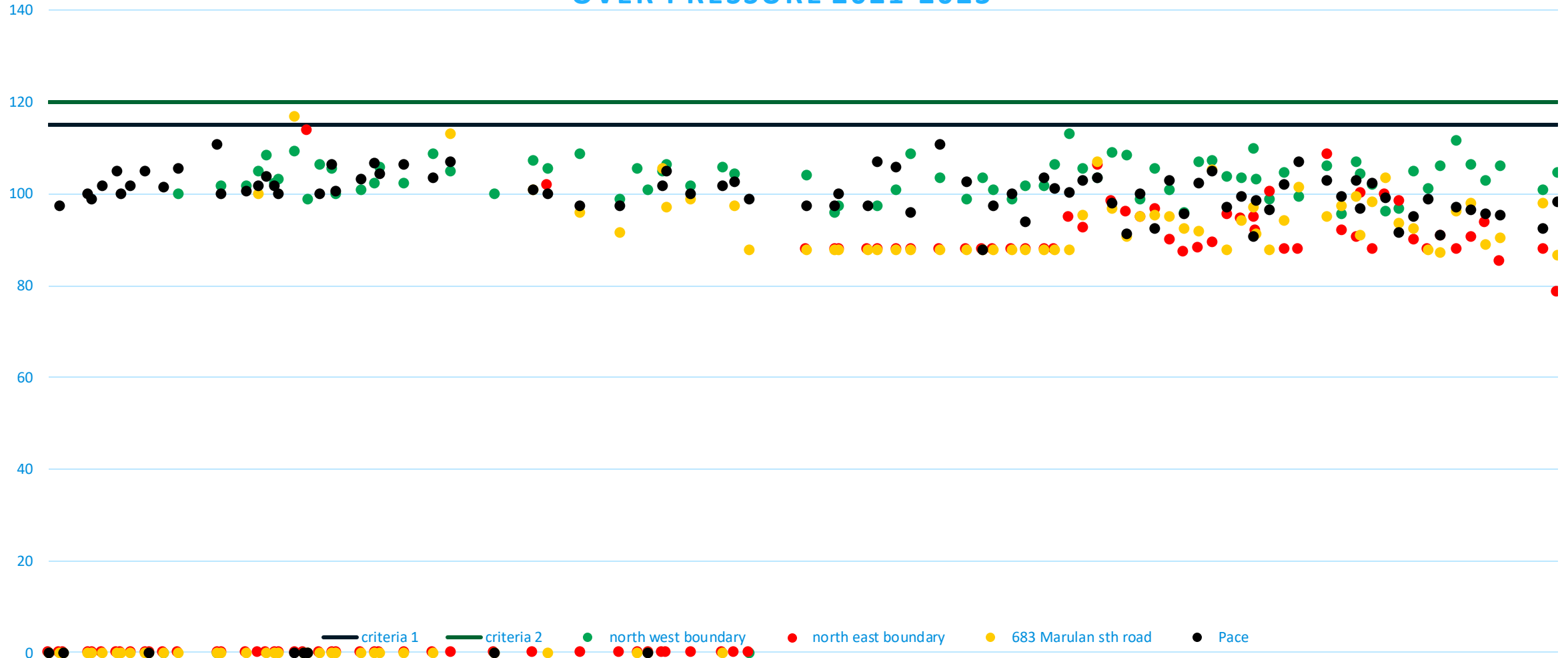
Monitoring was undertaken over 13th, 14th, and 15th December 2022, 23rd, 24th and 25th January 2023

Results for the December round are in compliance. January results are pending.

Next round due in April-June.

Blasting - Overpressure

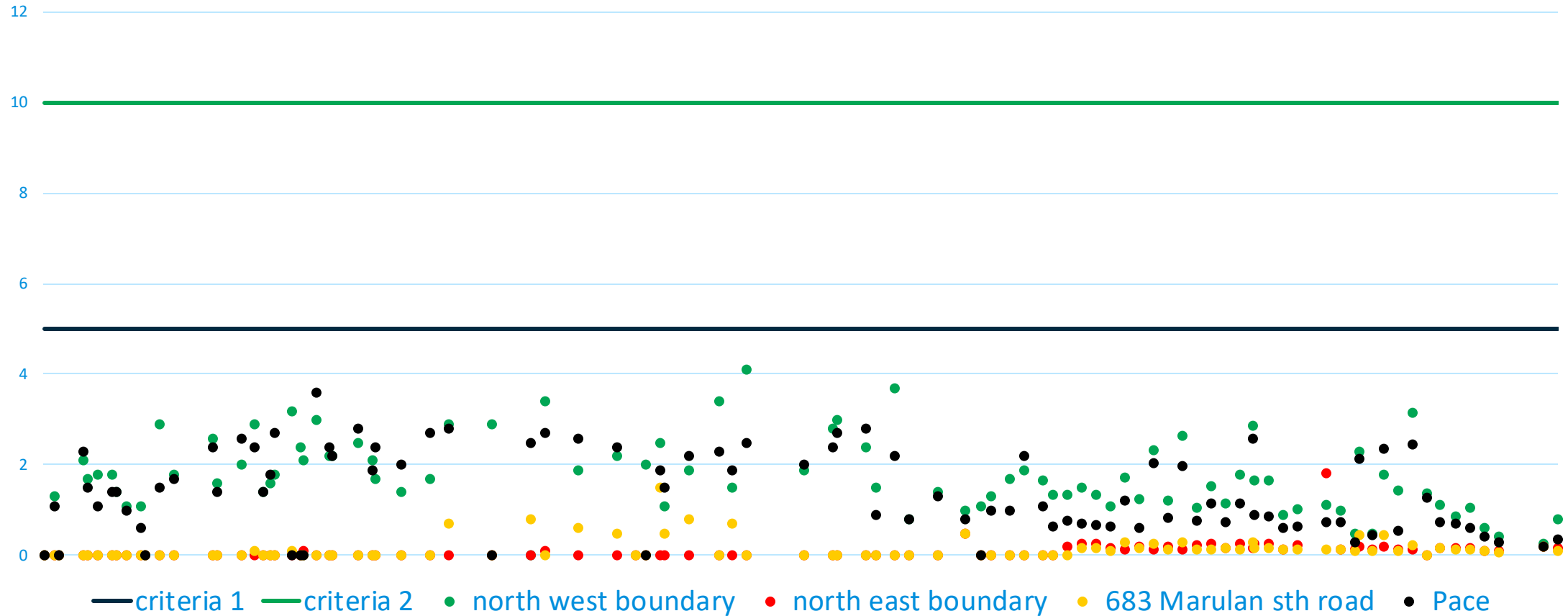
OVER PRESSURE 2021-2023



In Compliance

Blasting – ground Vibration

Vibration 2021-2023



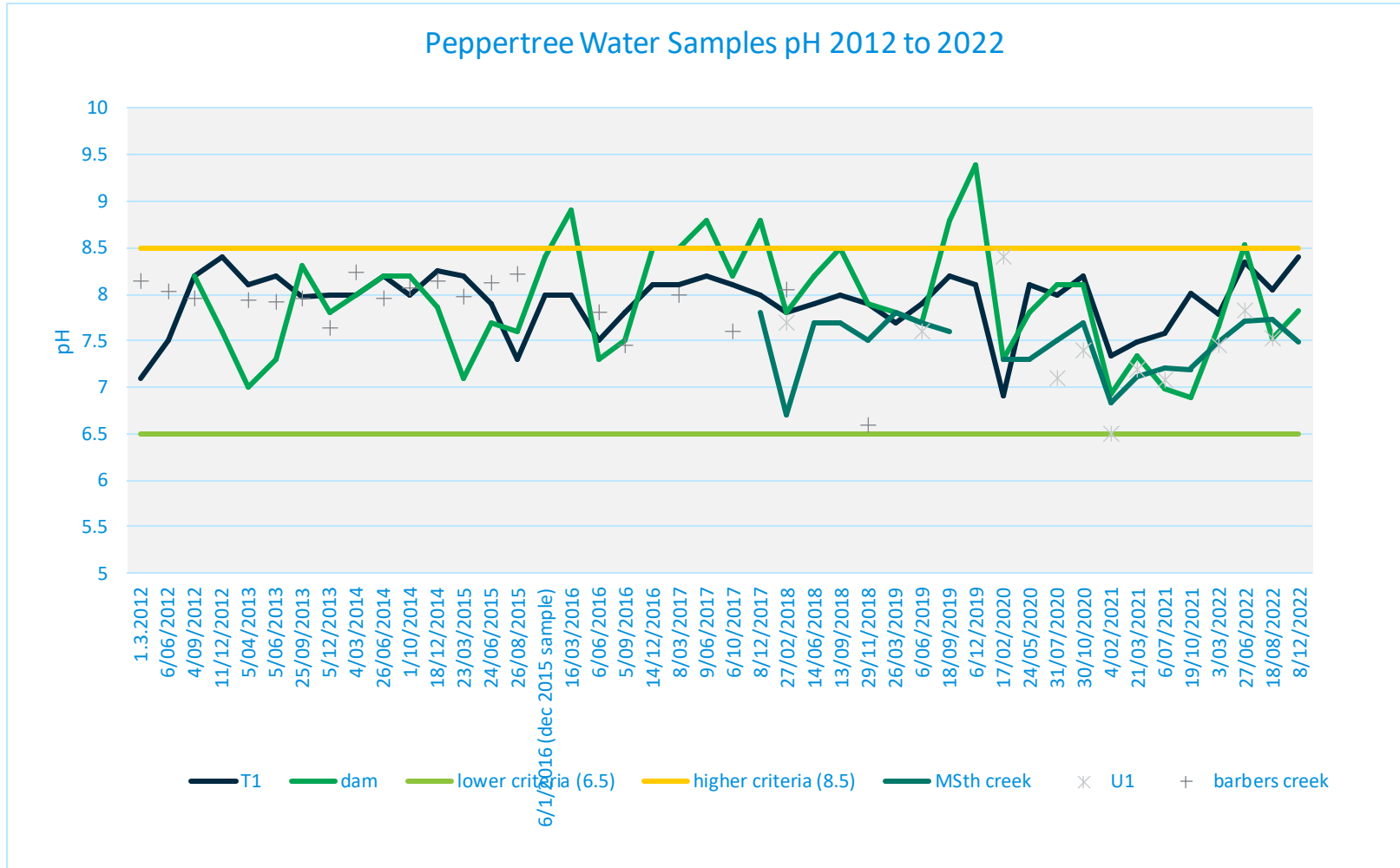
In Compliance

Surface Water

Quarterly monitoring round undertaken in October – December 2022 with sampling on Thursday 8th December 2022

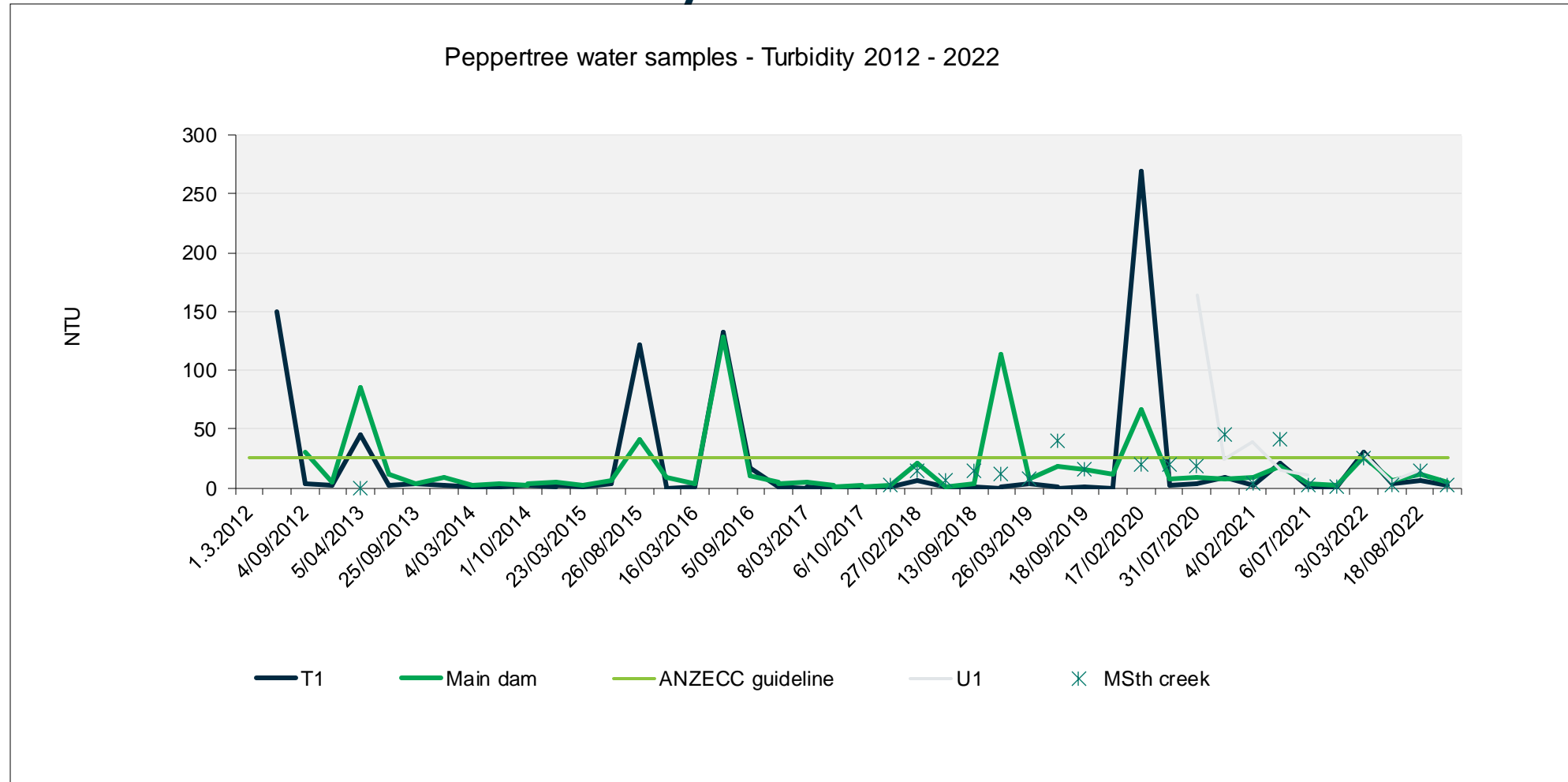
No issues with water supply or quality over the last 3 months

Surface water - pH



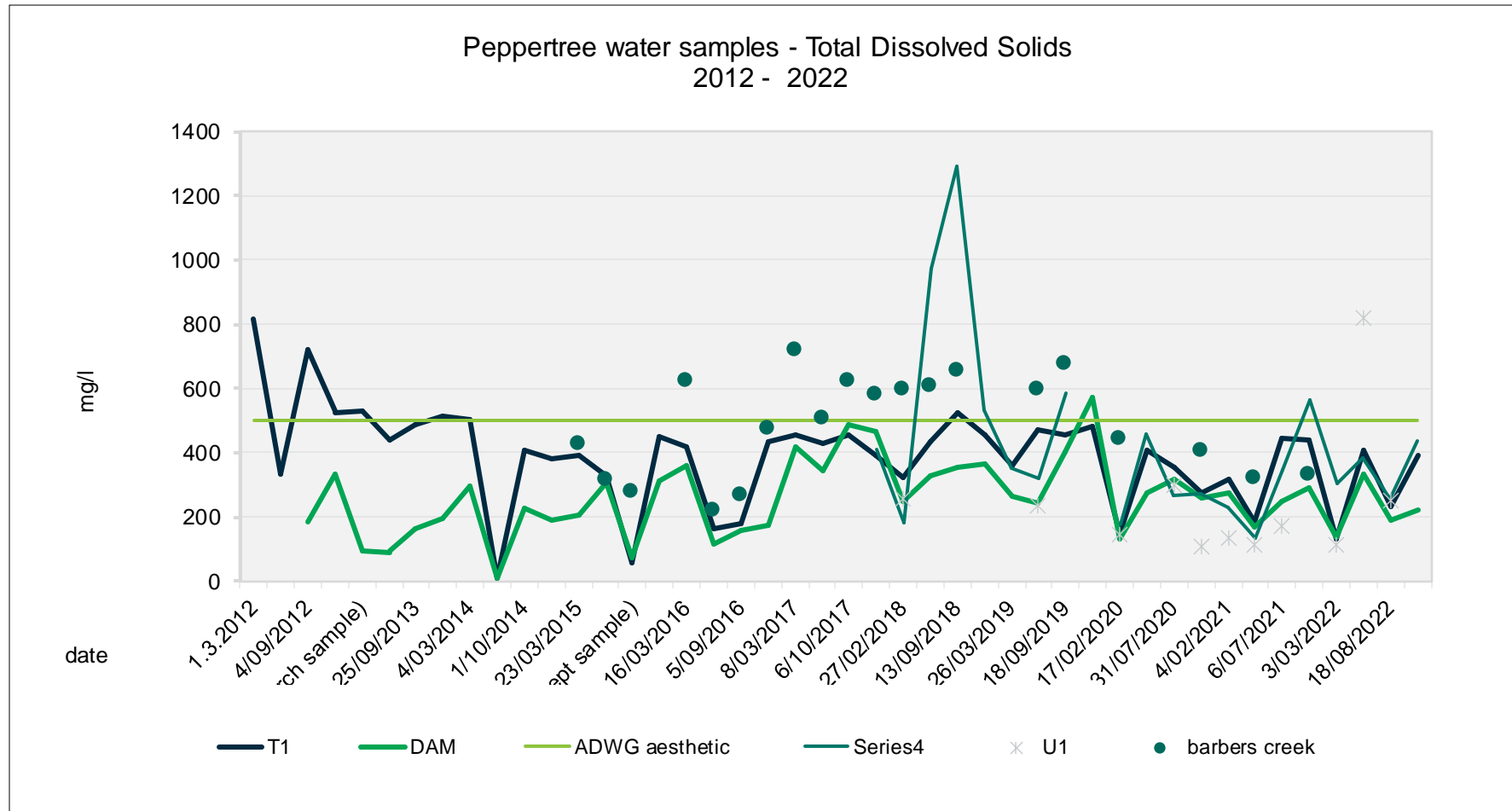
Within guideline for December samples

Surface water - Turbidity



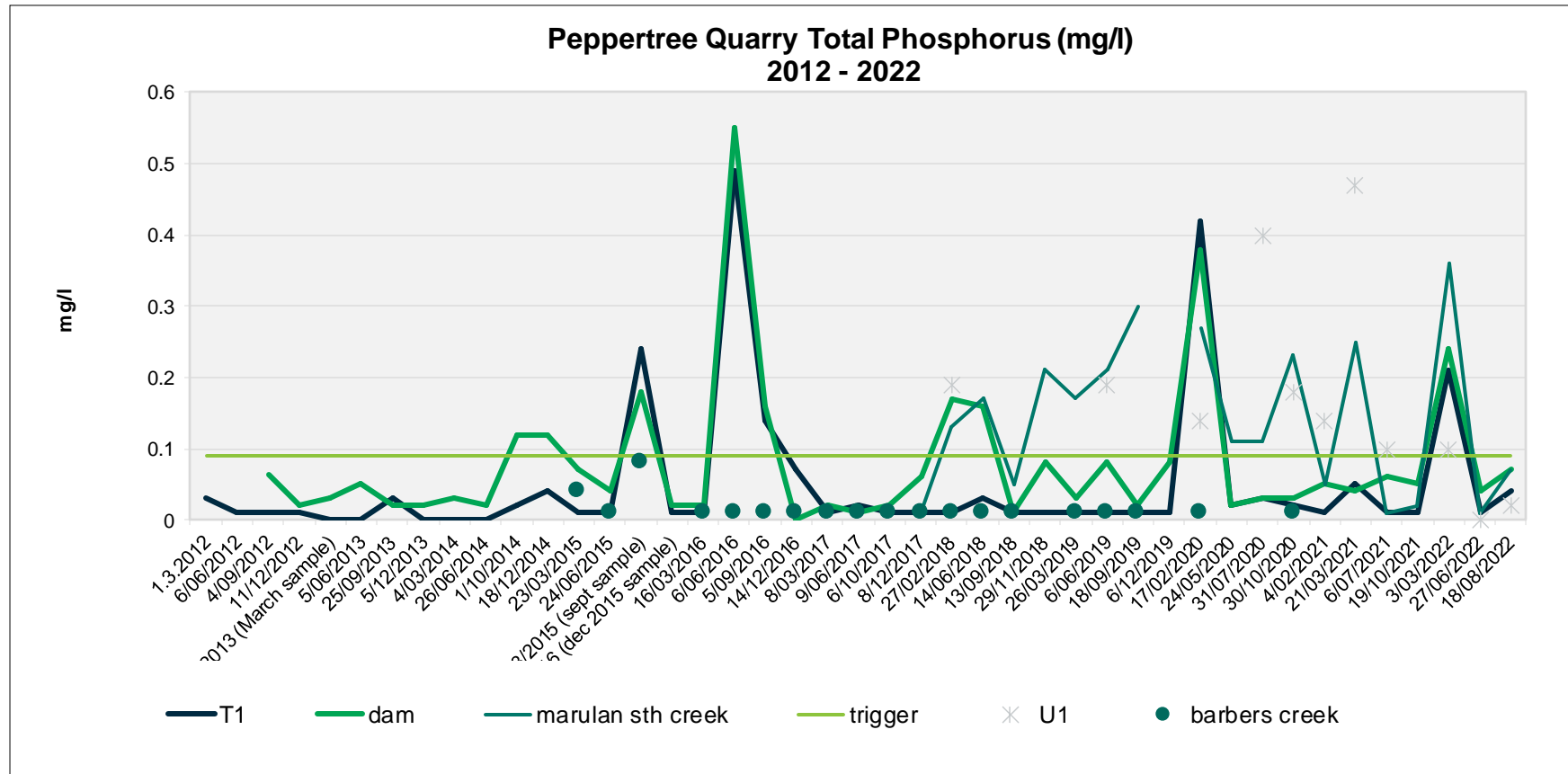
Below guideline for December samples

Surface water – Total dissolved solids



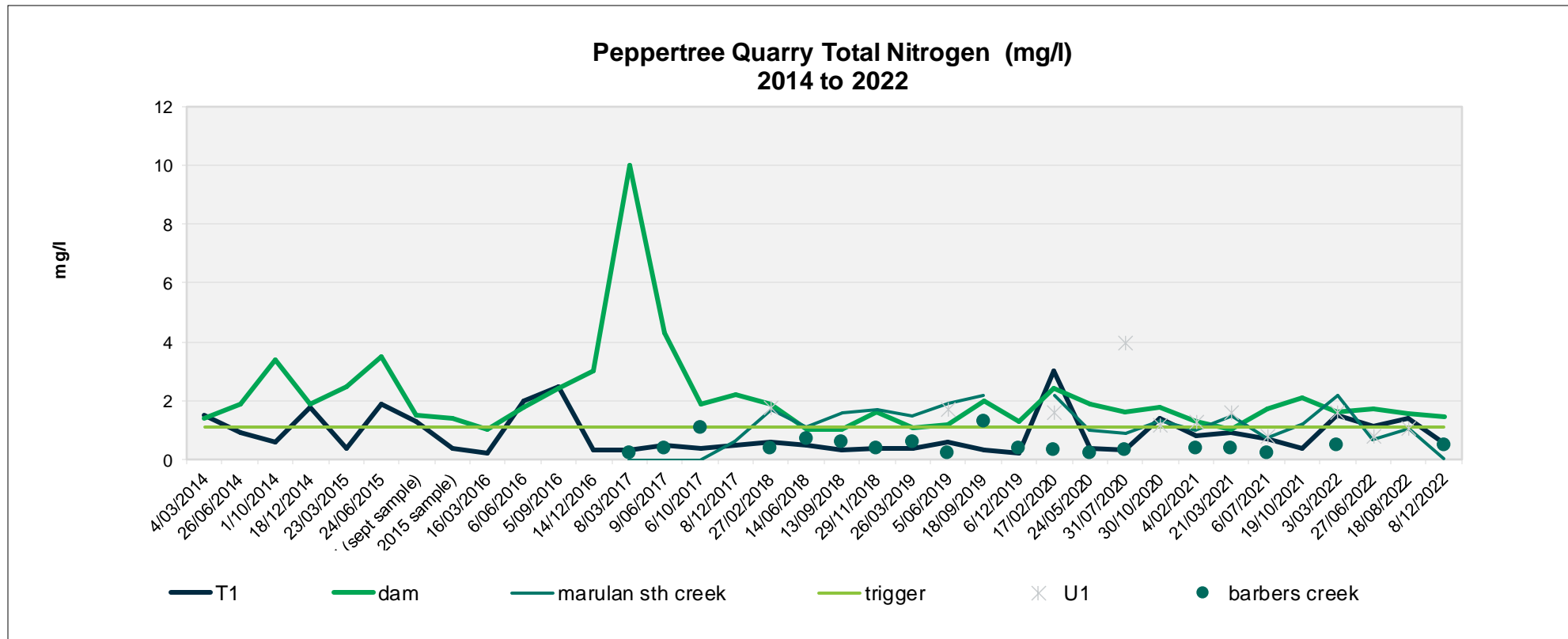
Below guideline for December samples

Surface water – total Phosphorus



Below guideline for December samples

Surface water - Total Nitrogen



Below guideline for December samples with exception of main dam

Environmental Flow

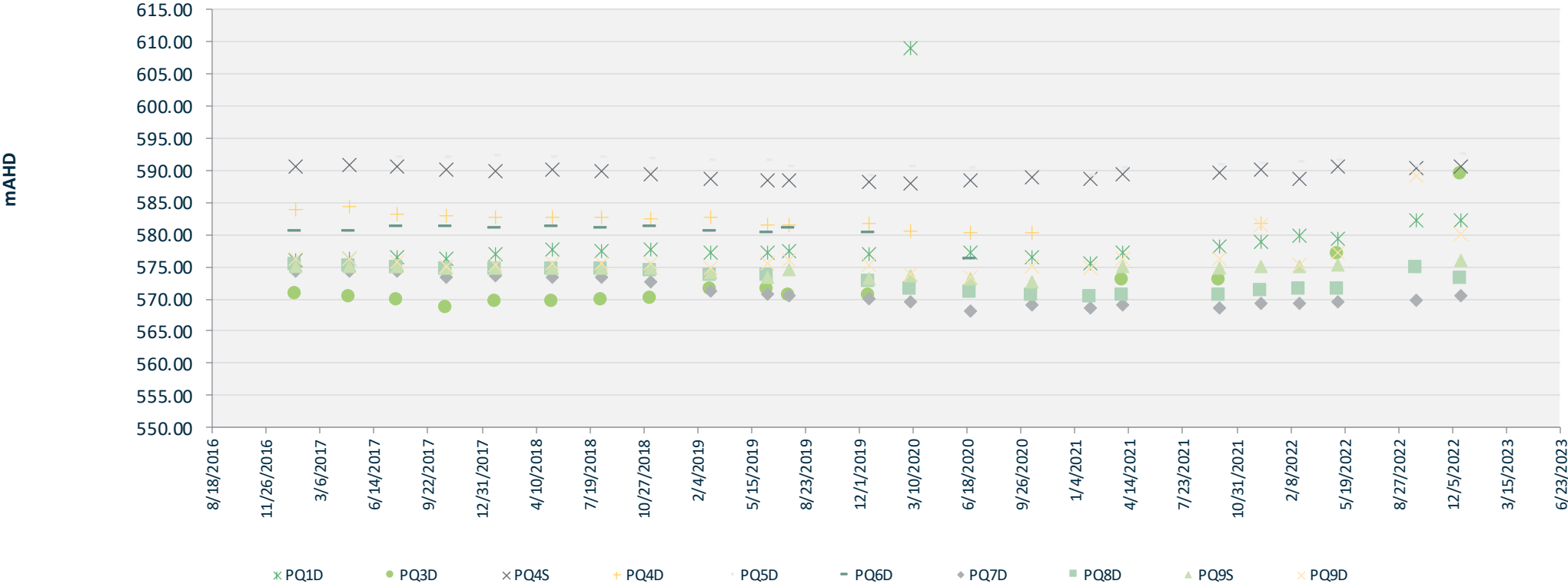
| year | total in flow | 10% | total out flow | in compliance | comment |
|----------|---------------|------|----------------|---------------|--|
| Dec-2021 | 19.9 | 1.99 | 373.79 | yes | Rainfall - possible overflow of the V notch weir |
| Jan-2022 | 19.4 | 1.94 | 239.79 | yes | Rainfall - possible overflow of the V notch weir |
| Feb-2022 | 10.8 | 1.08 | 4.35 | yes | |
| Mar-2022 | 54.2 | 5.42 | 1201.31 | yes | Rainfall - possible overflow of the V notch weir |
| Apr-2022 | 30.3 | 3.03 | 656.16 | yes | Rainfall - possible overflow of the V notch weir |
| May-2022 | 22.6 | 2.26 | 316.52 | yes | Rainfall - possible overflow of the V notch weir |
| Jun-2022 | 3.1 | 0.31 | 6.6 | yes | |
| Jul-2022 | 60.6 | 6.06 | 820.91 | yes | Rainfall - possible overflow of the V notch weir |
| Aug-2022 | 34.2 | 3.42 | 341.8 | yes | Rainfall - possible overflow of the V notch weir |
| Sep-2022 | 18 | 1.8 | 22.88 | yes | |
| Oct-2022 | 62.5 | 6.25 | 999.7 | yes | Rainfall - possible overflow of the V notch weir |
| Nov-2022 | 42.2 | 4.22 | 411.49 | yes | Rainfall - possible overflow of the V notch weir |
| Dec-2022 | 0.9 | 0.09 | 1.34 | yes | |

Ground water

- > Monitoring conducted in September 2022 and December 2022.
- > Results all good, next round in the coming month.
- > Results show no changes to the groundwater

Ground water – water levels

Standing Water Levels Groundwater 2016 - 2022



Heritage

Artefact analysis has begun

Interim report currently being written

Reconciliation week activity being developed onsite, potential artwork in courtyard and artefact display for staff

Scar tree relocation being planned, currently undercover near the farm house. Scar tree conservation consultant has been engaged, site visit March.



Ecology

Three year plan developed for ongoing rehabilitation and maintenance

- 16.5ha of tree planting in spring- delayed to autumn due to weather
- 5km of direct seeding in spring- delayed to autumn due to weather
- Approx 80 000m² hydromulched- further 25 0000m² over the next few weeks.

Weed management undertaken in the last couple of months. Focus on black berry.

Nest box inspection + RVA + ecological monitoring complete

Seed bombing completed

More feral goats have been removed, happening on a as needs basis.



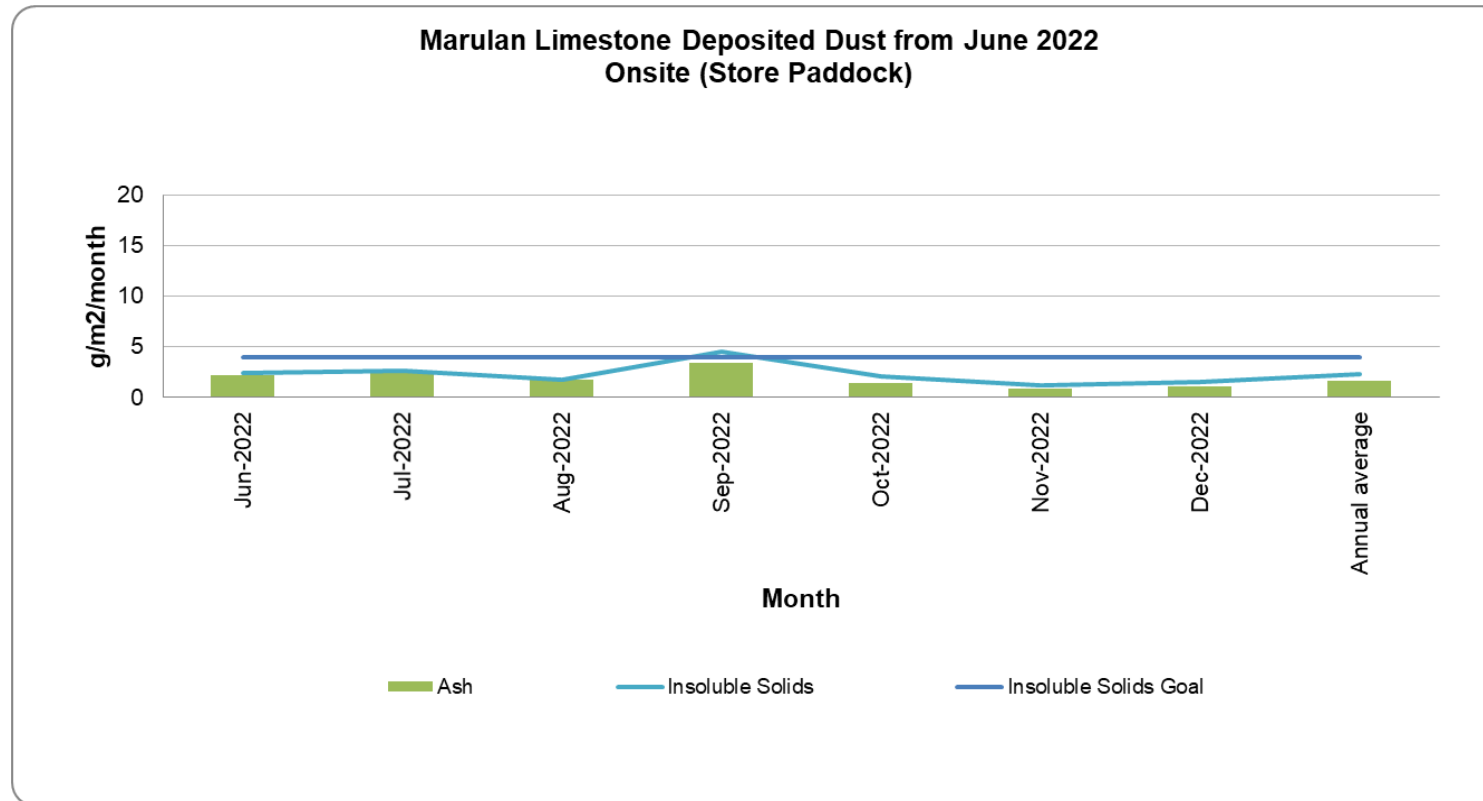
06.2

Environmental
Performance

Marulan South Limestone



Air – Dust deposition Site 1

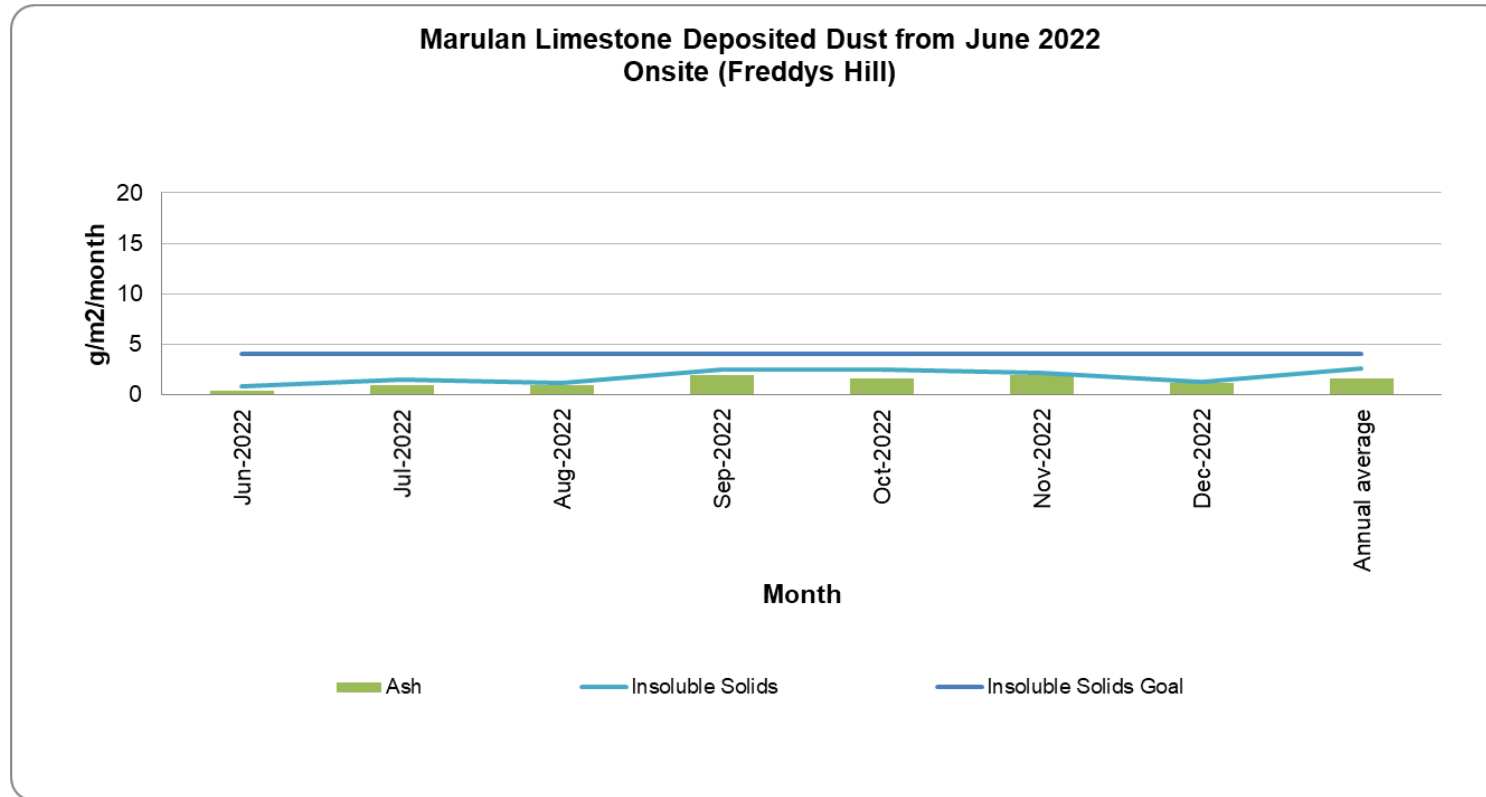


Annual Average goal of 4gm2/month

In compliance

Annual average below goal at the boundary

Air – Dust deposition Site 2



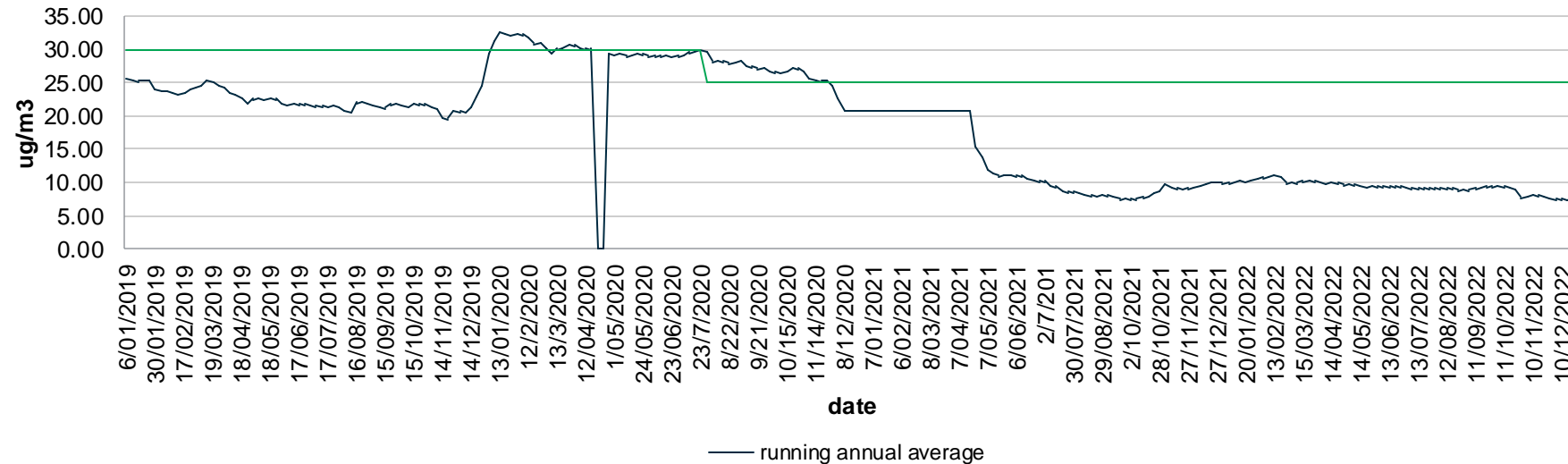
Annual Average goal of 4gm²/month

In compliance

Annual average below goal at the boundary

Air – PM10 annual average

PM10 Annual average trend 2019 - 2022



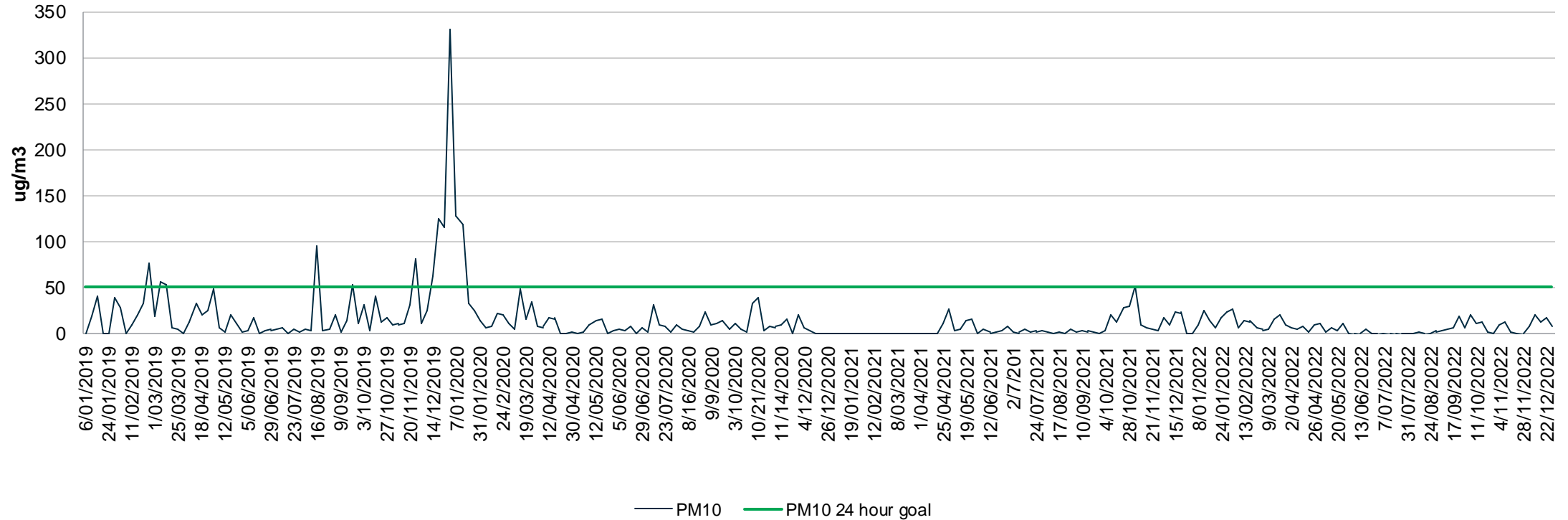
Annual Average goal of 25ug/m3

In compliance

Annual average below goal at the boundary

Air – PM10 24 Hour performance

Peppertree Quarry PM10 24 hour performance 2019 - 2022



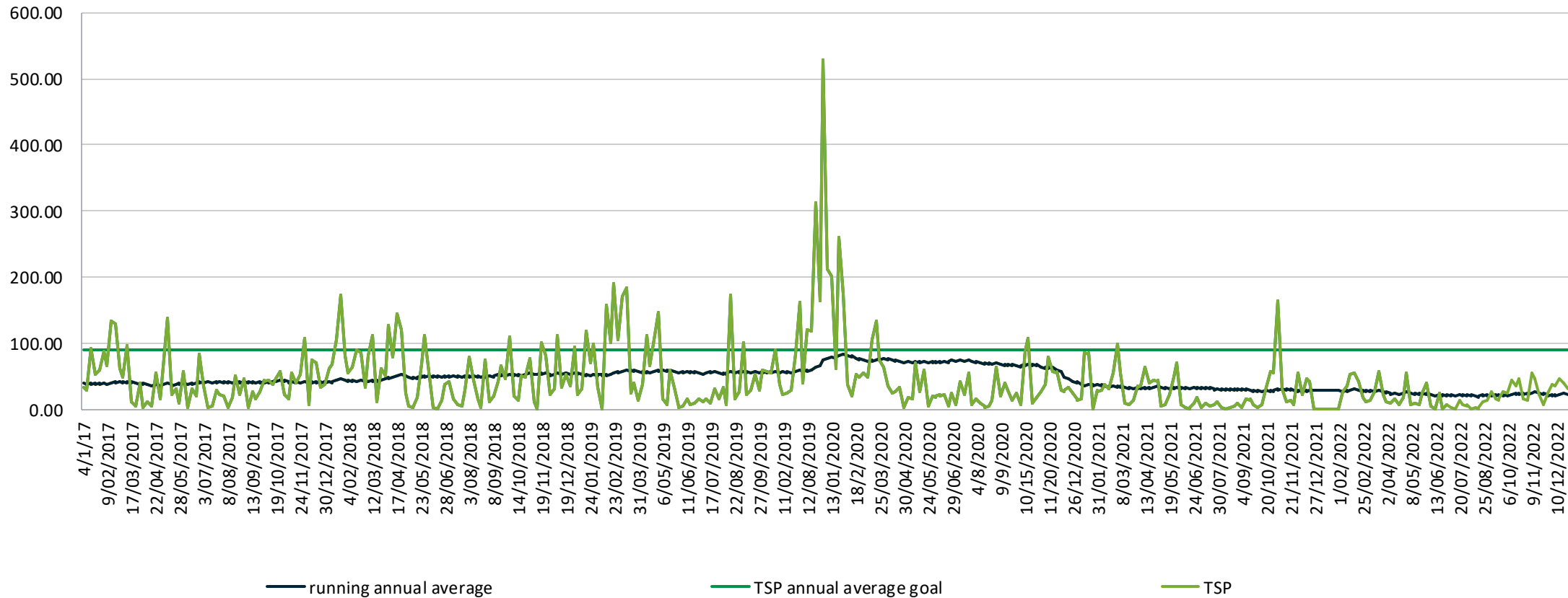
24 hour goal of 50ug/m3

In compliance

Annual average below goal at the boundary

Air – Total Suspended Particulates

TSP Annual average trend 2017 - 2022



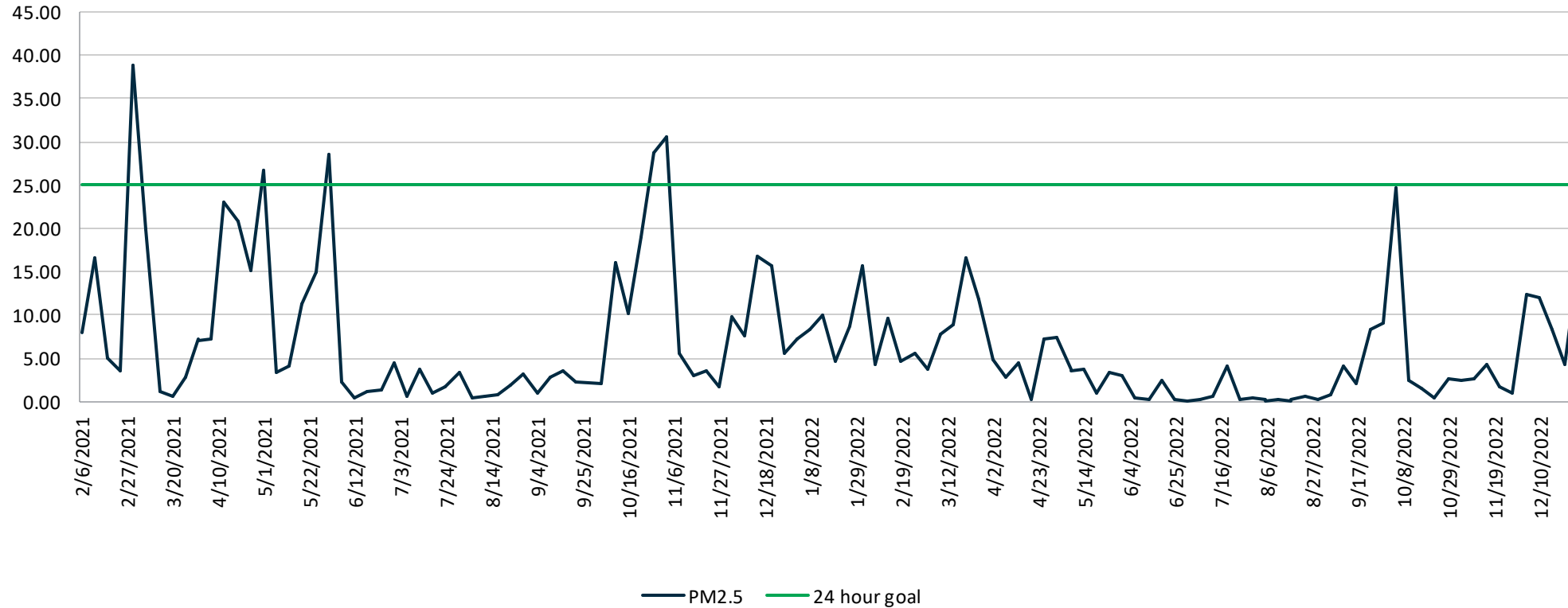
Annual Average goal of 90ug/m3

In compliance

Annual average below goal at the boundary

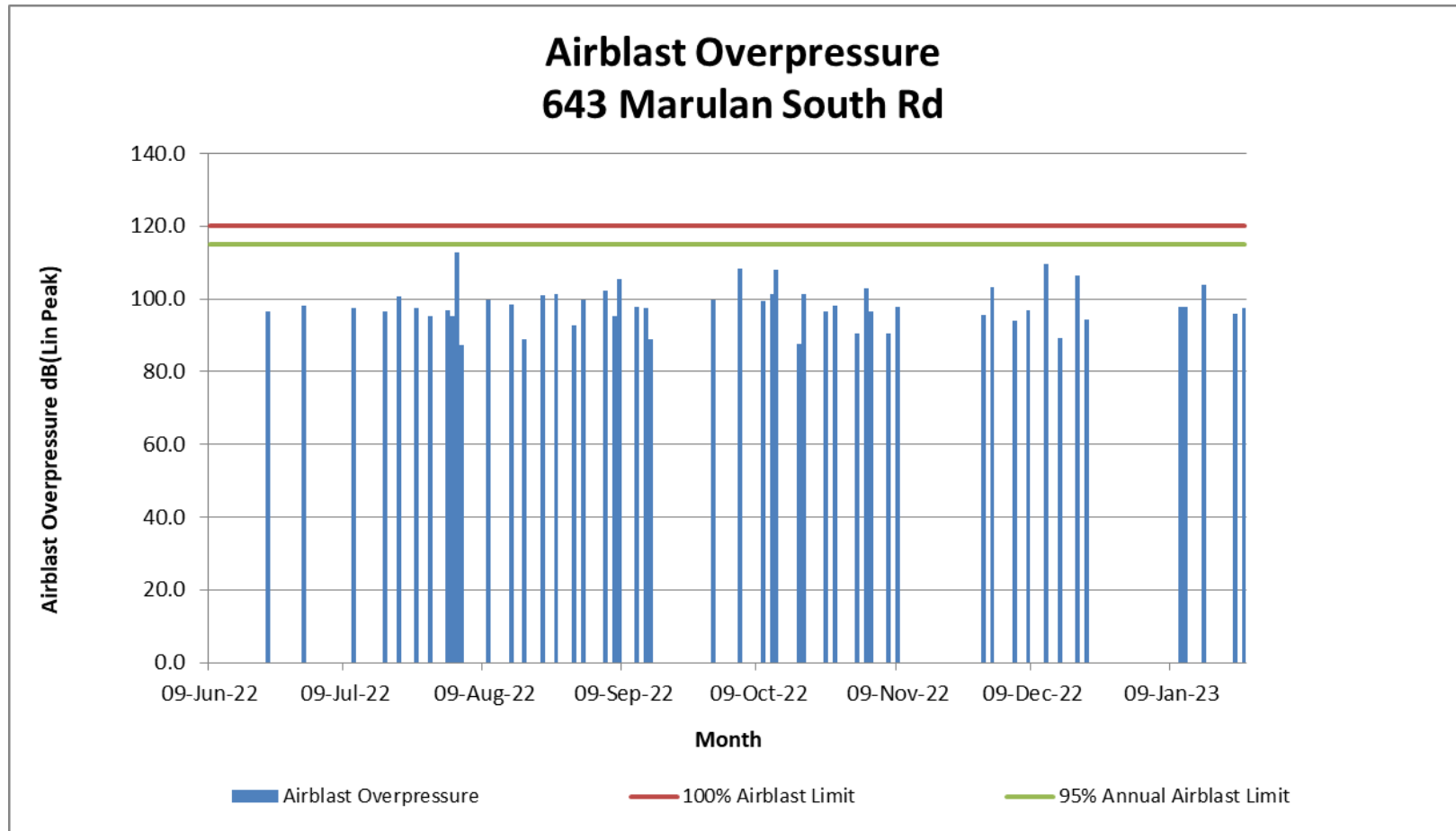
Air – PM2.5

PM2.5 24 hour 2021-2022



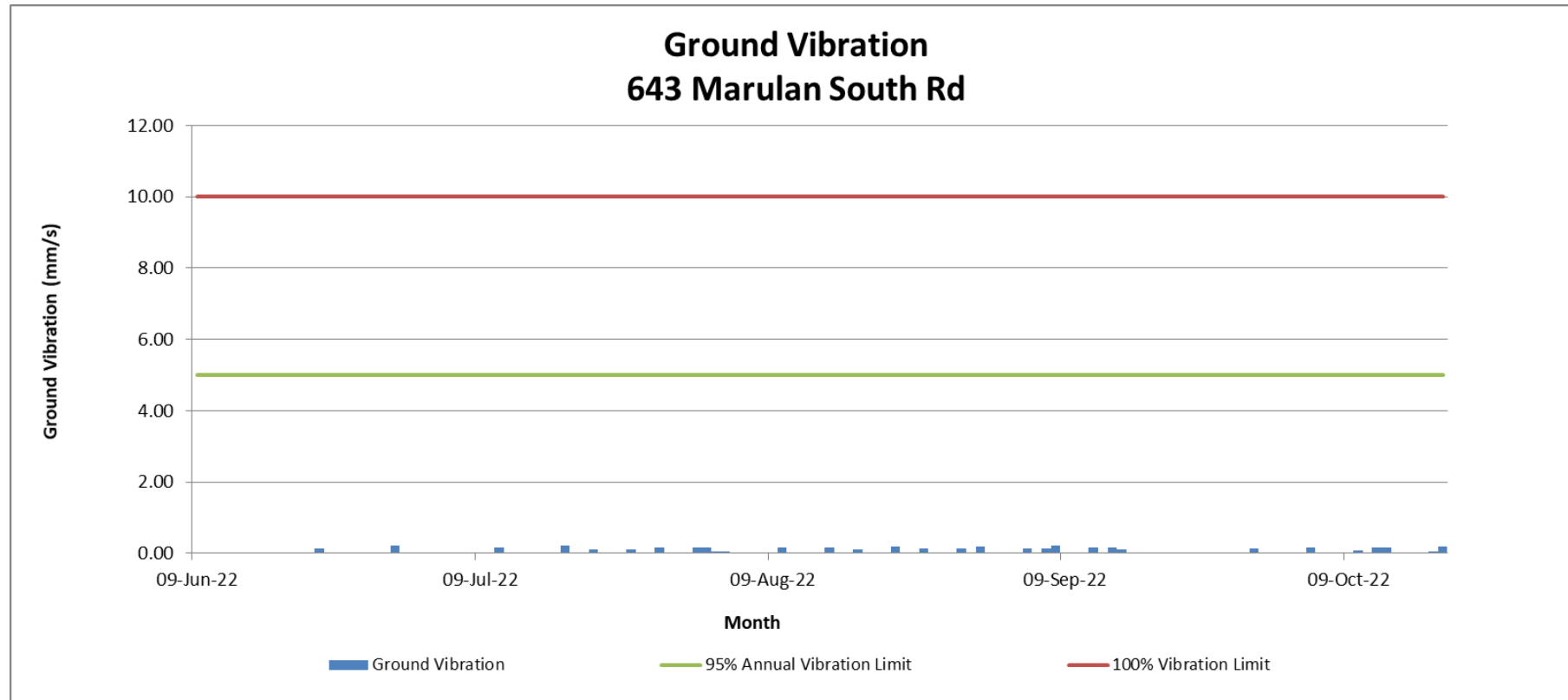
In compliance for the past 3 months.

Blasting - Overpressure



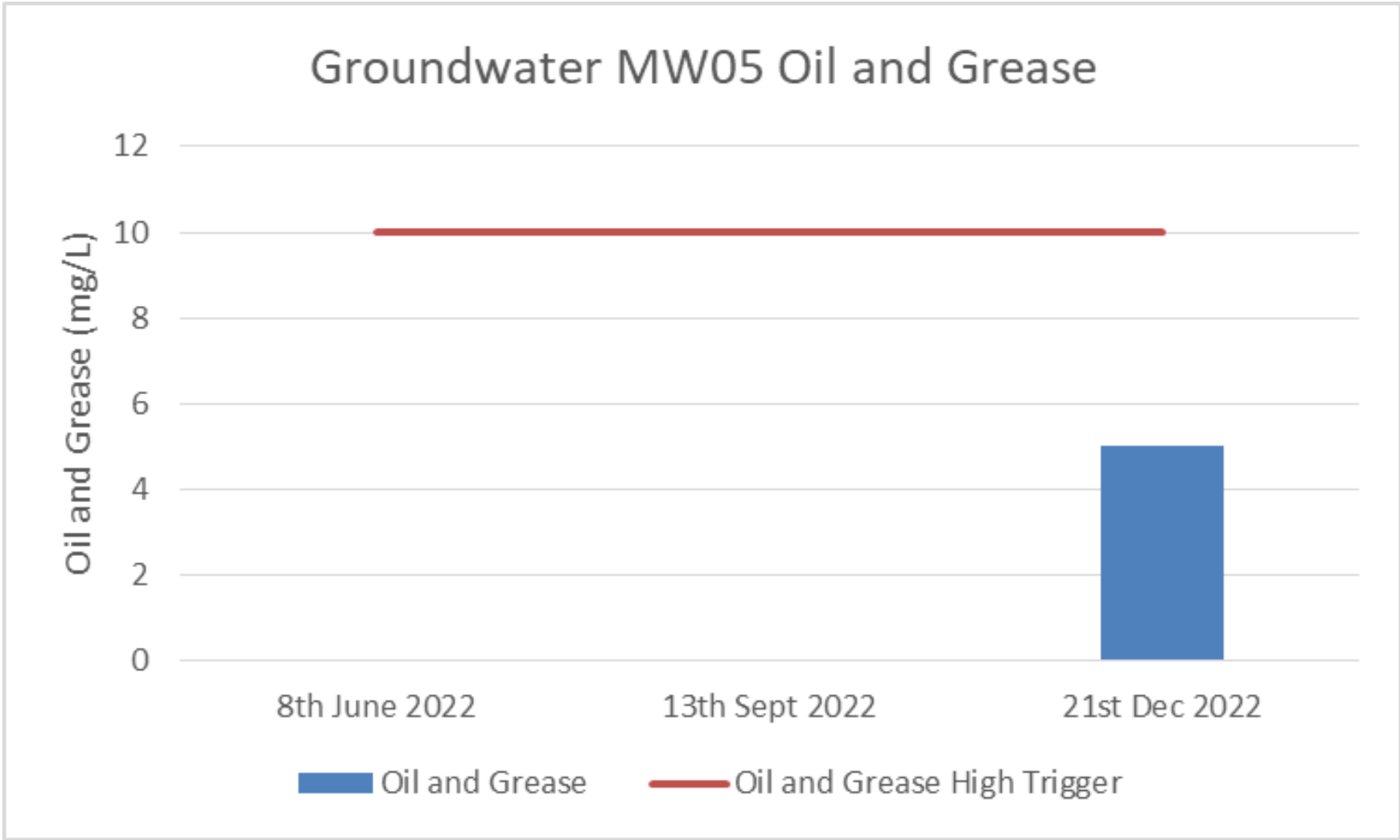
In Compliance

Blasting – ground Vibration

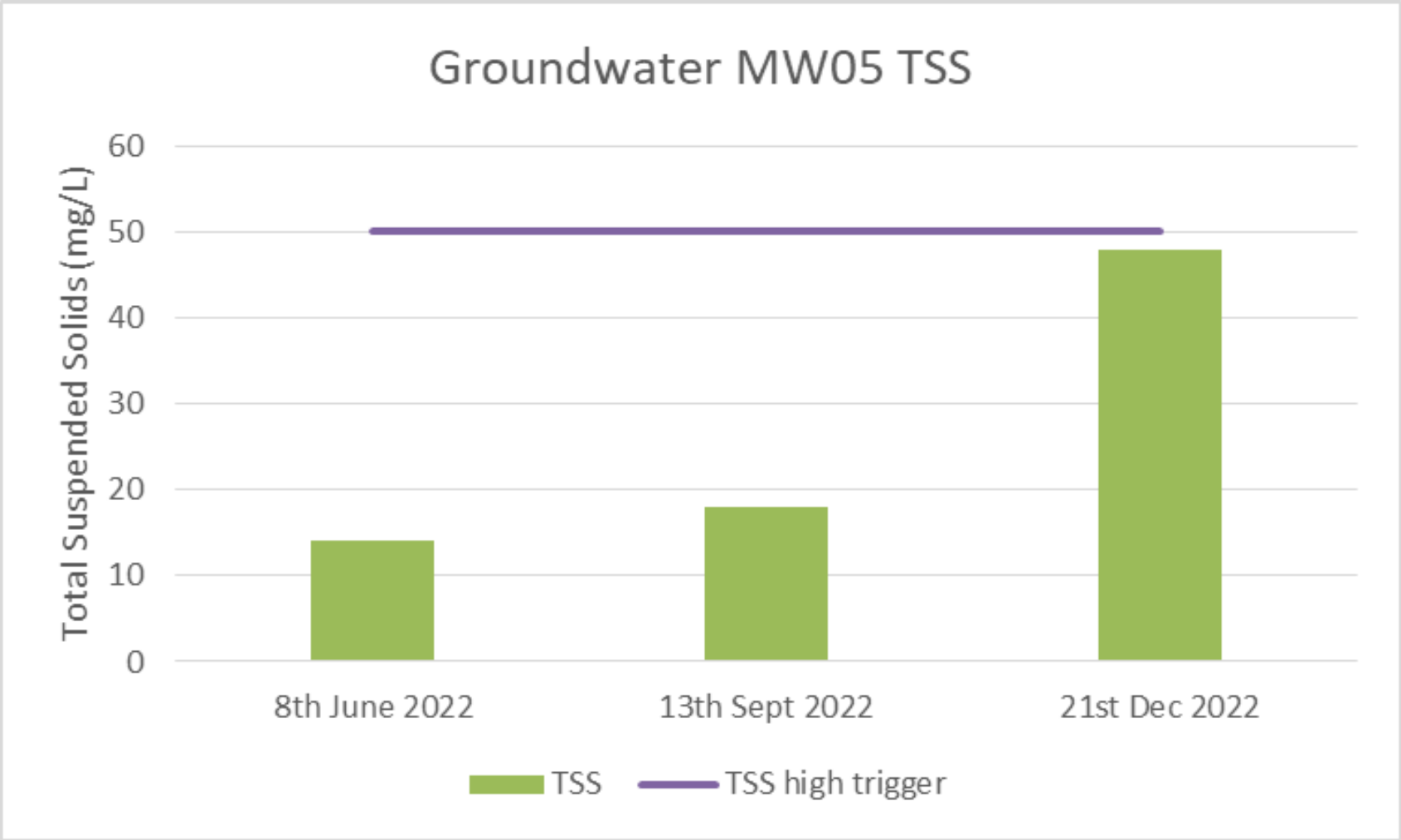


In Compliance

Ground water

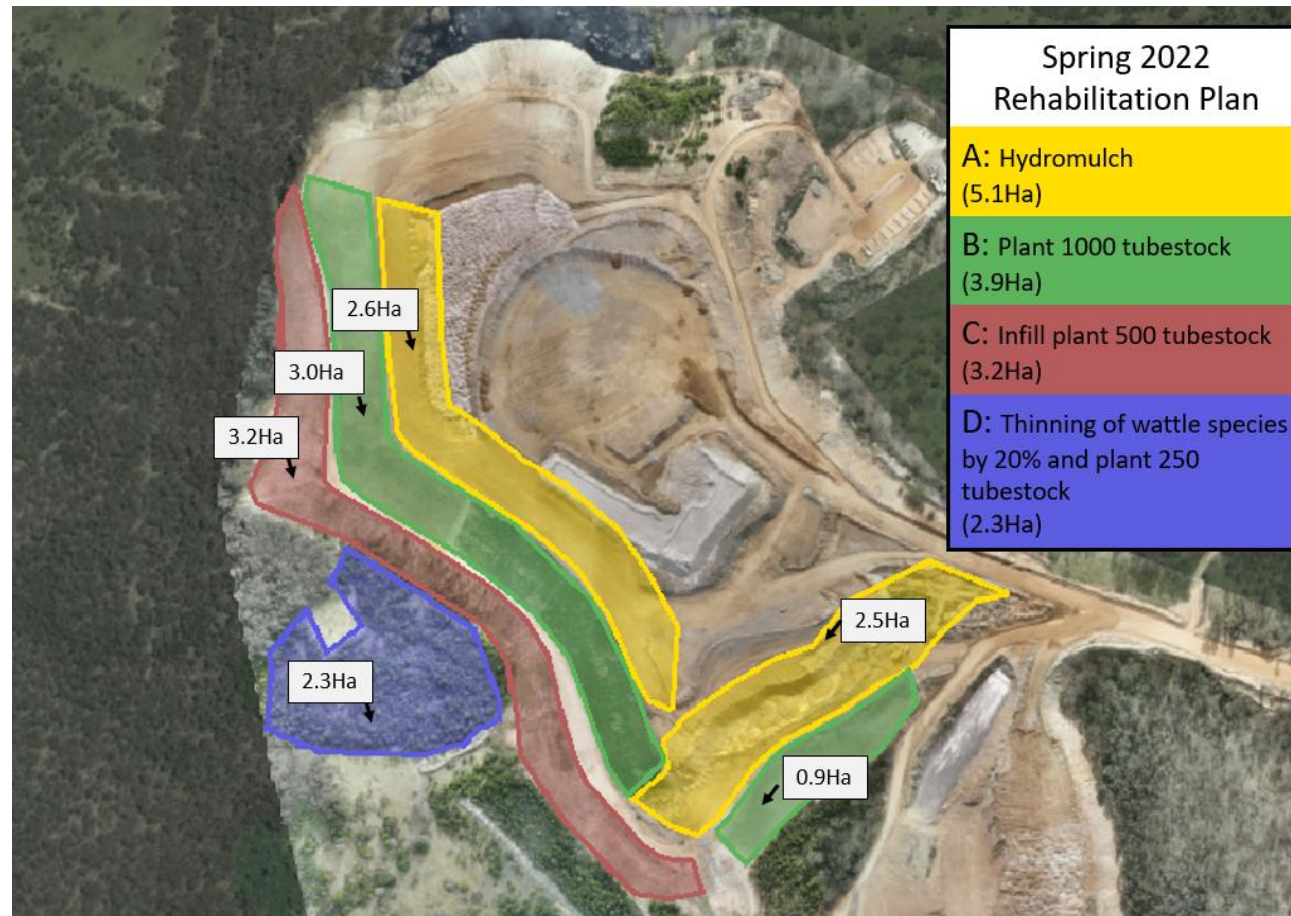


Ground water



Ecology

Rehabilitation complete on the Western Overburden Elevation



07

Stakeholder Engagement



Goulburn Mulwaree Council community bike ride

Tallong public school numeracy award

Careers Expo

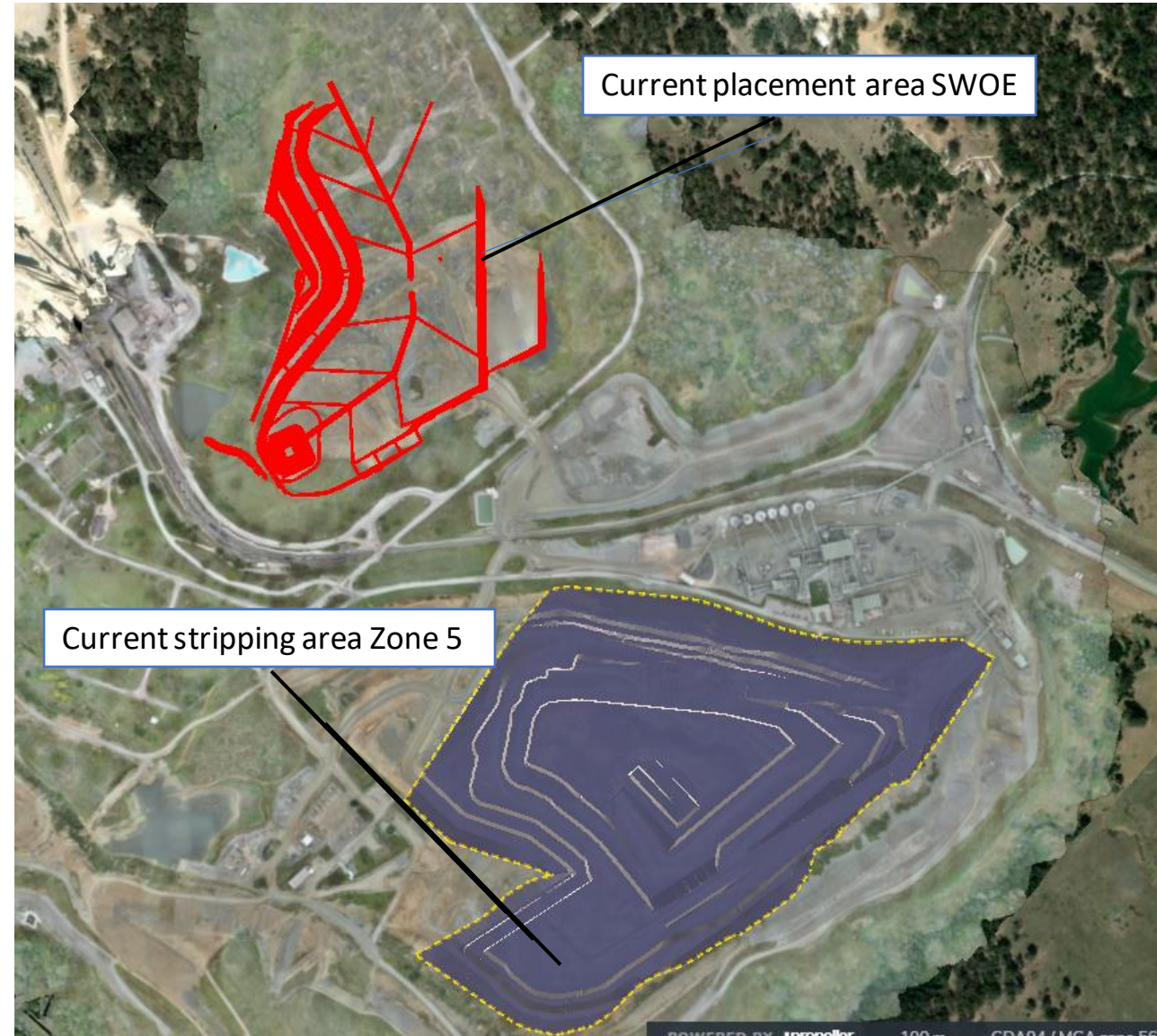
IQA site visit and slope stability course.

Mayoral Charity golf day



08

Operations
Next 3 months



Peppertree Quarry

Safety

Focus on the "life saving commitments"- particular focus for the year is "Injury free in 2023" focus on hazard reporting which will help to reduce incidents. Mental health first aid training

Overburden

Continue to strip in a Southerly direction.

Pit Update

Metso has been realigned to follow overburden stripping in a Southerly direction

Processing (STQ)

Continue to supply aggregates and sand to Sydney metro.

Transport

Commence product despatches by truck from shared road sales stockpile area as per Marulan South Limestone development consent.

People

We currently have three roles vacant on site. STQ supervisor and two production roles.

Marulan South Limestone

Safety

Focus on the behavioural safety.

Overburden

Overburden placement to begin, post mining lease approval, extending the western emplacement and adjacent to lime plant? Mine optimisation project

Pit Update

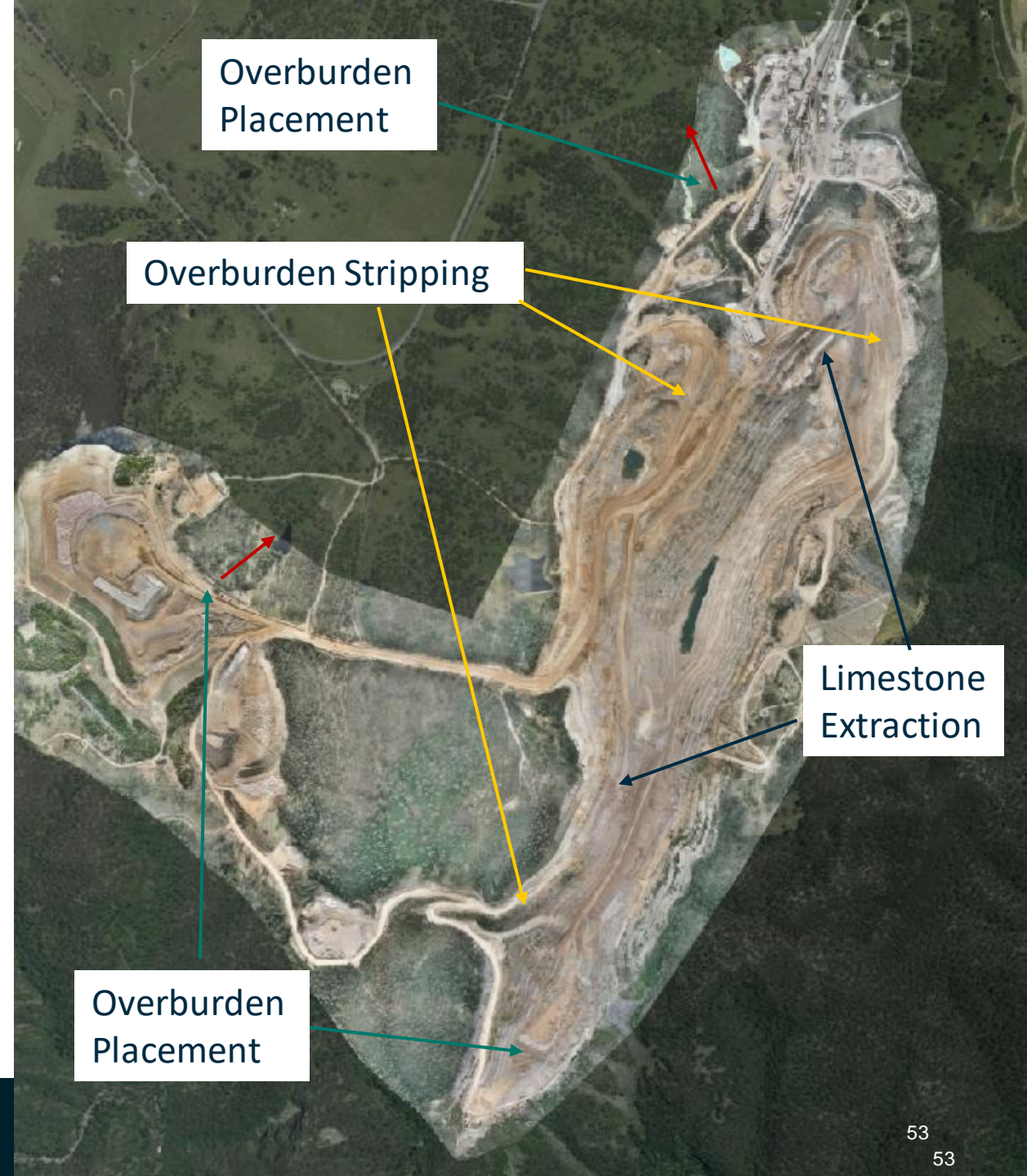
Awaiting approval mining lease before extension to the west.

Transport

Revised daytime hourly truck movements.

People

We are advertising for a Lime Plant production operator role.



09

General Business



Other

Next meeting

Jan 2023



Thanks for your participation