

Build something great™

Ormeau Quarry Community Update

December 2019

Best wishes for a safe and
happy holiday season from Boral



New Crushing & Screening Plant

We are proud to announce the completion of our new crushing and screening plant. It has been fully commissioned and is now operational (from 9 September 2019).

The new plant was officially opened on Monday, 25 November 2019 with the help of Michael Crandon MP.

Michael was first elected for the seat of Coomera in 2009 and is going strong. He has lived and worked in the local community for more than forty years, and his business and life experiences have equipped him well for the task of representing his local constituency. Michael is a member of our Ormeau Quarry Liaison Group where he regularly participates and is assisting in the communication process with the Ormeau community. It was a real pleasure to have Michael Crandon MP with us to assist and speak at the event.

We were also proud to see our visitors enjoying the event, impressed by the new operation while getting a close up view of the new plant, and also gaining a deeper understanding of our industry. Visitors included Kate de Preez, Commissioner for Mine Safety and Health, Government and Council representatives, consultants, customers, suppliers, industry members, Ormeau community representatives and Quarry Liaison Group members, and Boral representatives.



Left to right: Simon Jeffery - EGM Boral Qld, Michael Crandon MP - Member for Coomera, Russel Wilson - General Manager Quarries Qld, Liam Elsworth - Quarry Manager Ormeau

Boral originally lodged a development application to upgrade the Ormeau quarry crushing and screening plant in 2008. It was approved at the Full Meeting of Gold Coast City Council on 17 October 2011, and all Conditions were ratified under Court Order on 30 November 2012.

Now the plant is fully commissioned, our new Environmental Authority has come into effect and we have commenced operating under our new Development Approval.

Commissioning included:

- full performance testing on the new plant;
- installation of localised dust extraction to capture dust within the operational areas and feed it back within the crushing process;
- installation of water sprays and foam solution on conveyors to further enhance dust suppression; and
- full use of new quarry fleet.

The new crushing and screening plant is designed to produce product to market conditions. We are looking forward to the benefits that the significant investment in the new plant and infrastructure, new technology and improved environmental controls will bring for all concerned.

Future Pit Development Works

- Next stage of vegetation clearing works are proposed in accordance with our approvals - scheduled to kick off in 2020.
- Surveyors will be engaged to accurately mark out clearing boundaries;
- Tree protection fencing will be installed (surrounding protected trees);
- Third Party fauna spotter catcher will be present;
- Sediment and erosion control measures will be in place;
- Vegetation is to be chipped & mulched and utilised on site;
- Council inspections & reporting will be required;
- Aboriginal cultural heritage surveys & inductions are complete;
- Top down extraction plans / progressive top down rehabilitation of benches to address visual impacts. We are retaining the Stage 1 Rehabilitation Area to assist in minimising visual impacts (top two benches will remain intact to reduce visual impact);
- Environmental Offsets are established for the life of the project at the site off Cliff Barrons Road;
- A new internal haul road is to be constructed to accommodate the new pit development.

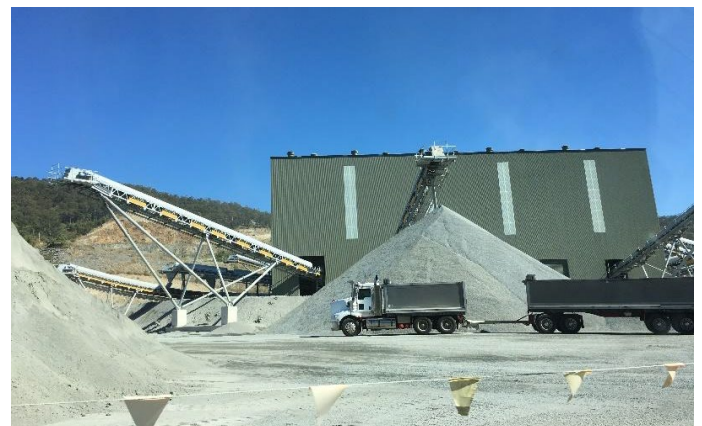


Traffic Concerns

Since the implementation of Boral's Transport Code of Conduct and ongoing training, truck driver behaviour has greatly improved and community complaints have significantly reduced over the years. Nearly all Boral company trucks are now fitted with dash cameras, the remainder are in the process of being upgraded. Dash cam footage is periodically audited to investigate driver behaviour. Since the code of conduct was originally released in 2009, Boral believes it has made significant progress in reducing the impacts associated with its haulage operations.

In addition, the Boral Logistics team conducts ad hoc driver conduct/behaviour surveys on all haul roads where the Boral Quarry Business operates.

It is also worth noting, Upper Ormeau Road is a public road and is free to be accessed by all trucks, not restricted to trucks visiting the quarry.



Boral has made a significant contribution to Council for the road upgrade of Upper Ormeau Road, including road widening, to increase the safety of all road users.

We would like to assure the Ormeau community that Boral remains committed to ongoing improvements and encourages feedback from stakeholders on our performance against the Transport Code of Conduct. A copy of the code can be requested via our feedback line below.

However, if you do observe unacceptable truck driver behaviour, we ask that you please contact our quarry on 5546 6525.

In order to effectively investigate and take action, we need your help. Please report all complaints immediately to the quarry, or as early as possible, with as much detail as possible. Footage of dash cameras in Boral's trucks is saved for 24 hours and is being used for complaint investigations; hence the early reporting of complaints is essential.

Required details are:

- Date & time,
- **registration (most important)**,
- the location of the incident, and
- any other distinctive features, such as colour of truck, truck & dog, colour of tray, etc.

This approach will provide us with the best chance to follow up on offending trucks instantly and we can respond back to the complainant in a timely manner. The earlier Boral is aware of the issue, the quicker we can respond and follow up.

Quarry Christmas Trading Calendar:

- Last operating day: Friday, 20 December 2019
- First Day back: Monday, 6 January 2019



Contact Details: Ormeau Quarry Weighbridge, 580 Upper Ormeau Rd, Kingsholme Qld 4208;
Ph (07) 5546 6525

Email for feedback: feedback_NR@boral.com.au



Boral is committed to supporting communities in which we work. This year we are making a special donation to the Red Cross Disaster Relief and Recovery Appeal, supporting those affected by the bushfires.