

Boral Montrose Quarry Community Update

August 2016

The Boral Montrose Quarry will soon begin work to access inactive areas of the quarry to extract remaining stone reserves. This Community Update has been issued to inform our valued stakeholders about these important works.

What's involved?

Due to the size and layout of the quarry, a review of our extraction areas has been conducted.

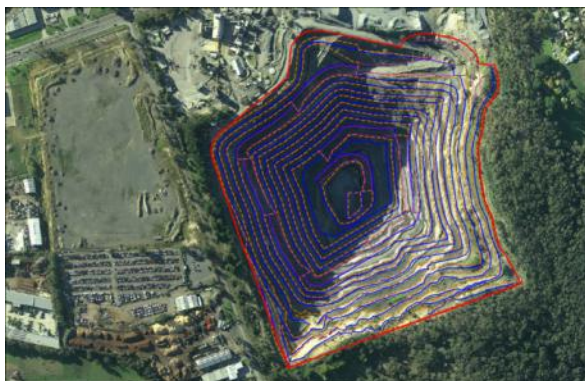
A site review has determined there is still a significant amount of stone reserve to be found within the quarry benches and walls inside the approved extraction area.

In order to extract these remaining stone reserves we have developed a quarry development schedule.

As part of this schedule, the temporary earthen mounds which are used as visual screening (known as 'bunds') covering the top two 'benches' on the eastern side of the quarry will be removed to expose the stone underneath.

These earth bunds were constructed when quarry stage development ceased in this area years ago.

As the vegetation and the clay that comprises these temporary visual barriers is removed, the bare benches may become more visible from some areas in the distance.



All works are within the approved Work Authority (red line)

Once stone extraction on these benches has been completed, the visual bunds will be replaced.

This work will include re-grassing and the planting of trees indigenous to the area.

All works to be undertaken during this program will be within the existing Work Authority (WA100) area.

What will I notice?

The temporary visibility of the top two benches on the eastern side of the pit will be the only noticeable change from a distance.

The quarry will operate to its usual hours.

We remain committed to minimising any effects on local residents and will continue monitoring all dust, noise and vibrations related to the operations.

Due to the need to blast close to the top of the quarry where we haven't been operating for some time, vibrations may become more noticeable.

As we monitor all of our blasts, we will continue to work to ensure we are within the required ground and air vibration limits.

Boral has discussed the program with the State Government regulatory authority, the Earth Resources Regulation (ERR), and will continue to liaise with them to ensure we are meeting the requirements of the Work Authority.

When will works start?

The works program will begin in early September 2016. All works will be undertaken during our existing operating hours.

Site activity generally occurs from **Monday to Saturday** between **6am** and **6pm**.

The quarry is licensed to conduct blasting between **8am** and **5pm, Monday to Friday**, and **8am** and **1pm Saturdays**.

Is this part of finally rehabilitating the quarry?

The quarry offers an important resource for the local community and the wider Melbourne metropolitan area, providing local jobs and products for major projects across the city.

Accordingly, we plan to continue to operate until the end of the available rock reserves in the approved extraction area.

These works are purely about the optimisation of quarry operations and the continuous production of quality rock from the site.

Consultation about the quarry's 'end of life' will occur once there is a solid view of when the current quarry will no longer be capable of providing product.

It will require a great deal of work and discussions between Boral, the community and Local and State Government at the appropriate time.

Your local Quarry Manager is
Andrew Rankin.

If you have any questions or concerns, you can contact Andrew on
9237 1109 or
andrew.rankin@boral.com.au

How long will these works take?

It is anticipated that the bench-specific works will begin early September 2016 and will continue into 2017.



The visual bunds that will be removed and replaced after extraction

Who can I contact if I have concerns?

We welcome your comments and feedback about any topic relating to our Boral Montrose Operations. You can:

Phone us: **9237 1109** (site) or **9981 2925** (Stakeholder Relations Advisor)

Email us: **feedback@boral.com.au**

Visit our websites:

www.boral.com.au/montrose

www.boral.com.au/feedback