

Boral Linwood Quarry

Community newsletter

July 2021

We would like to provide a quick update on operations and plans at the Boral Linwood Quarry, including updates on our new Quarry Entrance Road construction, July drop-in sessions, Eastern Development progress and the recent EPA Marino Dust Study.

New Quarry Entrance Road construction update

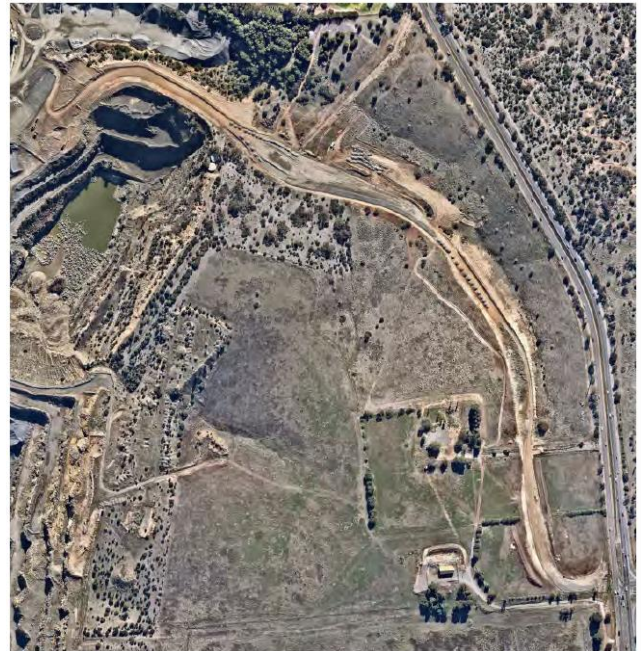
We are in the process of constructing a new quarry entrance road to provide better and safer access to our site. The new entrance will improve community safety by minimising heavy vehicle interactions on local roads, while also streamlining our traffic movements across the Linwood Quarry site.

The new entrance road will run from the intersection of Majors Road, Ocean Boulevard and Lonsdale Road, O'Halloran Hill. This will connect the quarry directly to the main road network, forming a more direct route for traffic entering and exiting the quarry.

The connection of trucks and light vehicles travelling into and out of Linwood Quarry directly to the main road network will mean less traffic on local roads, less truck movements and less noise. This will see lessened traffic impacts for the Marino community as truck movements are diverted away from Brighton Road.

As part of Boral's commitment to minimising our impact to our local community, we will seek to arrange any temporary or partial lane closures to occur during off-peak times to manage potential delays to road users.

Boral expect the construction of the road to be complete in October 2021. Thank you for your patience while this work continues.



Eastern Development update

The Department for Energy and Mining (DEM) has granted Extractive Minerals Lease (EML) 6525 over Mineral Claim 4439 (what we've referred to as the eastern development).

We are currently in the process of developing a draft Mine Operations Plan (MOP) and Program for Environment Protection and Rehabilitation (PEPR).

To ensure the continuation of a prosperous relationship between Boral and the surrounding communities, we are asking for your input on aspects of the draft MOP/PEPR.

Please see overleaf for more information about our upcoming drop-in sessions.

Drop-in sessions during July

Unfortunately, state government COVID19 restrictions made it challenging for us to carry out face-to-face meetings during 2020.

During July, we are planning to host drop-in sessions in Hallett Cove and Marino to seek feedback from our neighbours and interested community members on aspects of our draft MOP/PEPR. Members of the team will also be able to answer questions about general site operations.

Wednesday, 21/07/2021, 5:30pm-7:00pm – Hallett Cove School R-12, 2/32 Gledsdale Rd, Hallett Cove SA 5158

Thursday, 22/07/2021, 6:00pm-7:00pm – Marino Community Hall, 44 Newland Ave, Marino SA 5049

If you have feedback that you wish to provide, you're welcome to contact us on (03) 9981 2925 before 5pm, 22/07/2021.



EPA Marino Dust Study

The Environment Protection Authority (EPA) has invited residents in the Marino area to participate in a study to assess dust levels. This study will be run over 12 months to determine whether the dust being experienced by the community exceeds national standards. A monitoring network has been designed in conjunction with local residents, and real-time air quality and meteorological data will be made publicly available.

For more information on the study or to register to participate please contact -

Phone: (08) 8204 2004

Email: engage.epa@sa.gov.au

Boral looks forward to supporting the EPA in this study.

Contact Us

We welcome your comments and feedback.

Phone us: (08) 8333 0404 (Linwood Quarry)
or (03) 9981 2925 (Stakeholder Relations)

Email us: feedback@boral.com.au