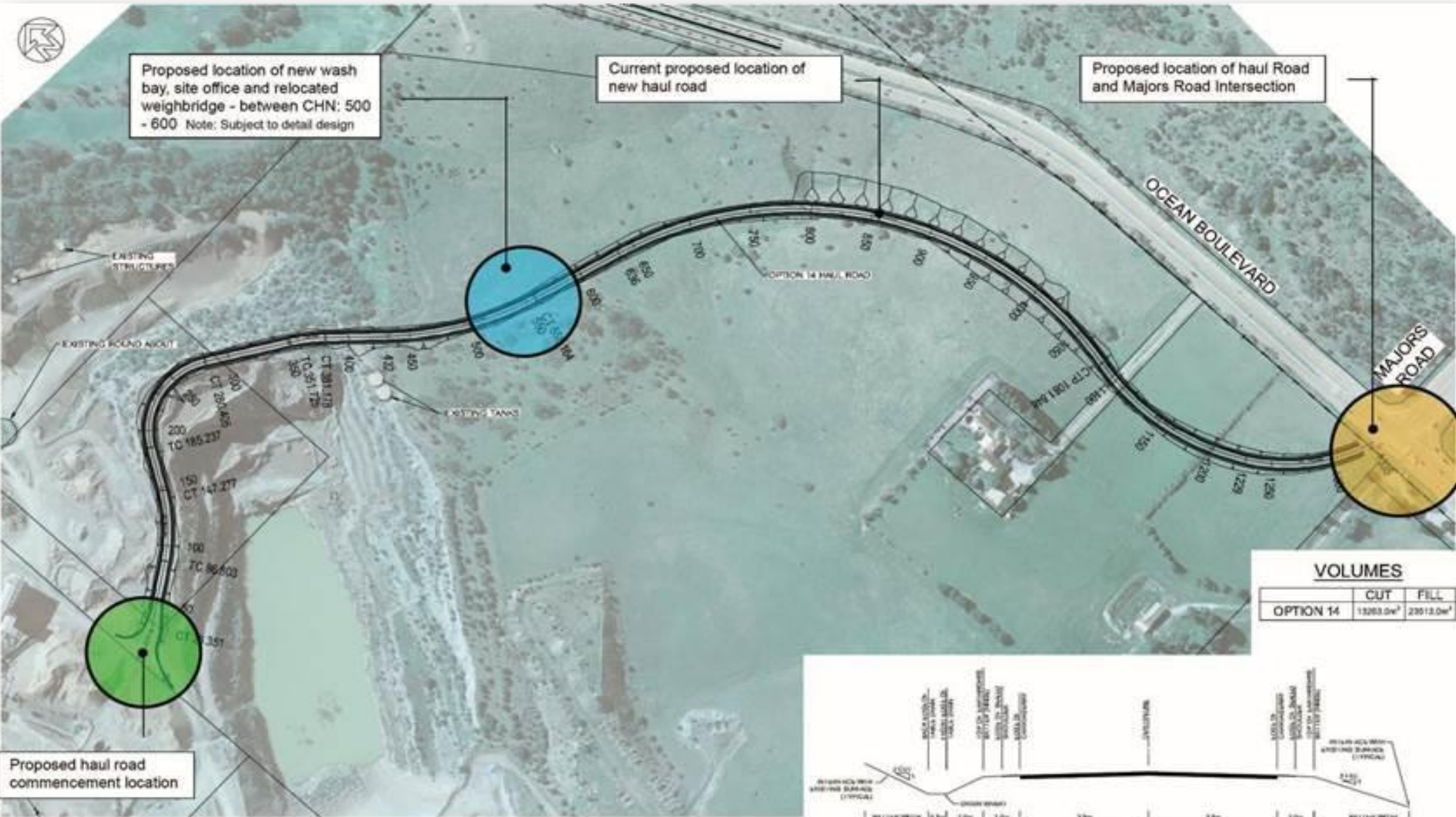




Proposed location of new wash bay, site office and relocated weighbridge - between CHN: 500 - 600 Note: Subject to detail design

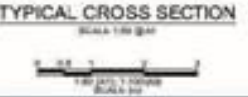
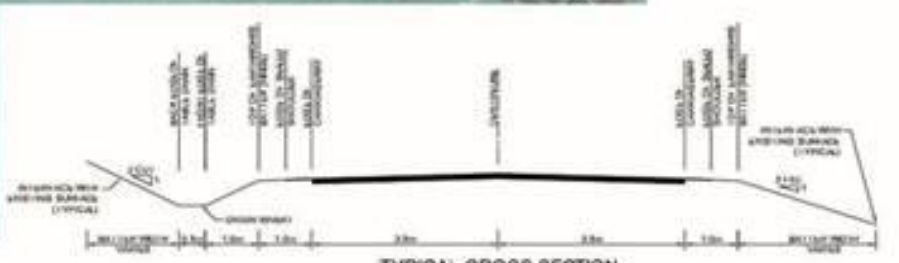
Current proposed location of new haul road

Proposed location of haul Road and Majors Road Intersection



**VOLUMES**

	CUT	FILL
OPTION 14	13263.0m <sup>3</sup>	23513.0m <sup>3</sup>



NO.	DESCRIPTION	DATE	BY	CHK	REVISED	APPROVED
001	ISSUED FOR PERMIT	2015.08.05	DEN LENSCH	SEBASTIAN		