

Boral Linwood Quarry

Community Update

July 2018

Information sessions, exploration drilling and hydro-seeding – some of the many activities which have kept the Boral Linwood Quarry team busy since our last edition of Community Update. Read on to find out more about these and other things we've recently been doing at Adelaide's largest quarry.

More about our shared future

We've made some great progress on our plans to secure the Linwood Quarry as a long-term source of building and construction materials supporting Adelaide's growth and development.

As a result, we're inviting you to hear from us about some of the changes which have been made. You can join us at the **Hallett Cove Civic Centre** (1 Ragamuffin Drive, Hallett Cove) on one of these times:

Monday 23 July: 5:30pm-7pm

Tuesday 24 July: 10am-12pm

Wednesday 25 July: 10am-12pm and 5:30pm-7pm

At the sessions, we'll discuss any of the updates you read about in this newsletter, and also be happy to hear any concerns you have about current operations or our future plans.

An RSVP is not required. We'd love to see you there!



Latest on the 'east'...

We're continuing to give a strong focus toward our plans to develop the quarry to the east of the present pit, with a lot of work and a number of achievements realised in the past few months.

During May, our conceptual **Quarry Development Staging Plan** was internally reviewed, while we also undertook sub-surface water investigation to analyse the flow rates of water travelling underground through the quarry site.

Understanding this will help guide the design for the various stages of the pit extraction process.

Our next steps are to conduct noise and air quality assessments at the site. These will be done after the Development Plan has been confirmed.

We are currently working on creating a visual representation of what the eastern development will potentially look like at various stages throughout the life of the quarry. These will be ready in time for the July information sessions.

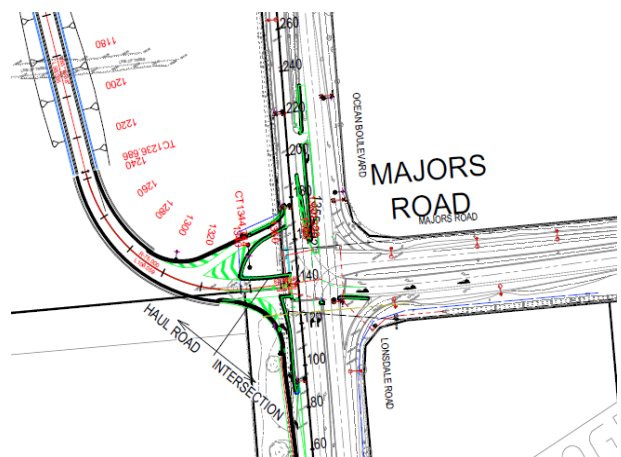
The sessions will also feature a **3D virtual reality display** which you'll be able to view using 3D goggles, allowing you to take a 'virtual' tour of the site.

The new way in...and out!

We're also making progress on the new access route for both our quarry and Marino Concrete operations.

In our last newsletter, we mentioned we are now on track to create the new access road from the site up to the Majors Road-Ocean Boulevard intersection. Since then, we've been holding regular meetings with road design consultants to ensure an appropriate design.

We also need to address requirements from the **Department of Planning, Transport and Infrastructure (DPTI)** and **Department of Energy and Mines (DEM)** for the project. Determination of the road intersection configuration by DPTI is in the final stages, with an outcome expected by the end of the year.



Finalising the top ‘bench’

The top ‘bench’ at the southern end of our Linwood Quarry pit has now been ‘battered’ to its final angle as we start the transition away from this part of the site.

This work has been completed to requirements outlined in the site’s **Risk Assessment**.



We’ve additionally undertaken **hydro-seeding** of the area to help speed up re-vegetation. This will assist with reducing dust emissions, as well as improve the aesthetics of the site from nearby Ocean Boulevard.

Hydro-seeding has also been carried out in the western area of the quarry, seen from Perry Barr Road. We’re very pleased that we have already received positive feedback from our local residents about this initiative.

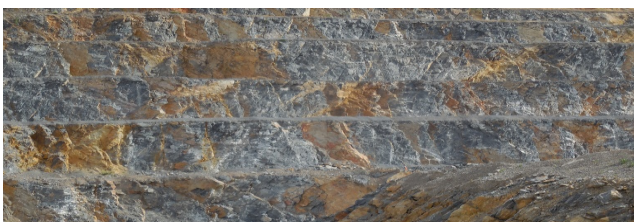
Exploring through blasting

Further exploration drilling occurred at the Linwood Quarry during February in partnership with our Boral geologist and our consultants, Groundwork Plus.

The activity added to our knowledge of the materials that make up the geology of the area around the quarry.

Analysis of the drill samples also enabled us to use more accurate information in our ongoing planning of the quarry’s eastern extension.

The holes left by the drilling were used for the successful **‘seed hole’ blasting** which took place on 14 February. The blasting was carried out successfully in accordance with our statutory obligations, and three representatives from the DEM also attended. Several of our **Joint Working Group (JWG)** members also took the opportunity to visit the site.



Improving Marino’s garden

We’re very proud to have been involved with supporting recent improvements at the Marino Community Garden.

Working with David Bagshaw and **Marino Residents Association** members, we’re providing quarry materials for the project.

Like everyone, we’re looking forward to seeing the garden blossom and grow, and seeing it utilised as a valuable community asset for the enjoyment of all.



Contact us

We welcome your comments and feedback about any topic relating to the Boral Linwood Quarry and our eastern extension project.

Phone us: 8296 6230 (Linwood Quarry) or 03 9981 2925 (Stakeholder Relations)

Email us: feedback@boral.com.au

Website: www.boral.com.au/linwoodquarry