



Koolkhan Timber Mill Public Report 18th April 2017

Site Details

Site	Koolkhan Timber Mill
Address	43 Mill Road, Koolkhan NSW 2460

Sampling and Environmental Protection Licence Details

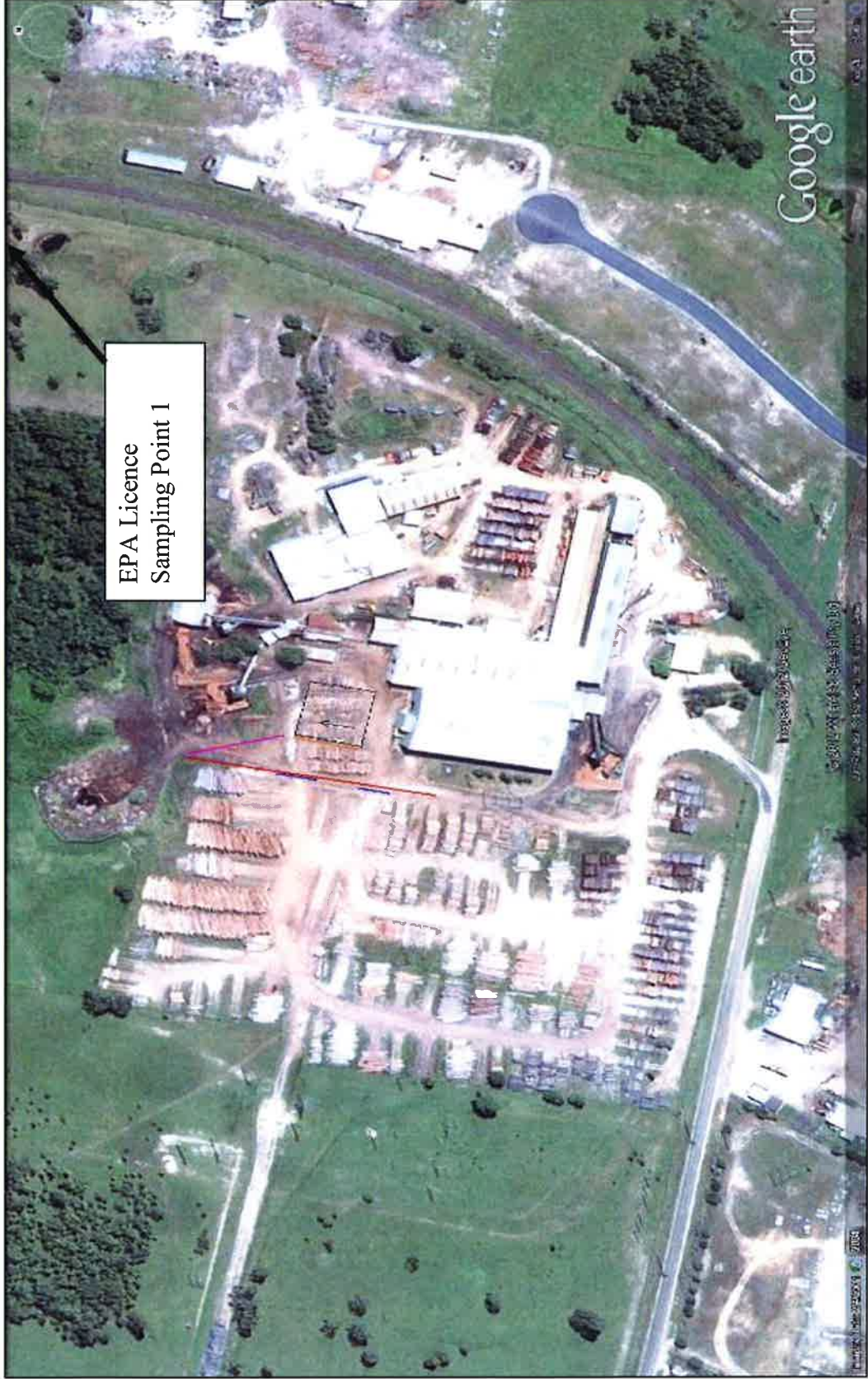
Sampling Type/Frequency	Type: Sampling Type: Water Quality– water sampling (Grab Sample) points as per Stormwater Management Plan submitted to EPA in 2003. Frequency: Sampling is to be undertaken annually on a quarterly frequency (i.e. at least four times per year)		
Sampling/Tests Dates	18 th April 2017		
Published Reports:	Draft: N/A	Final: 1 st February 2017 by email from Lab	See Lab result (F6176) - Environmental Analysis Laboratory, Southern Cross University,
Licensee:	Allen Taylor & Company Pty Ltd		
EPL No:	1437	Current version of EPL# 1437 can be viewed online at: http://www.environment.nsw.gov.au/prpoeoapp/	
EPL Conditions requiring monitoring	M2.1 (Point 1 –Discharge to Bunyip Creek at the Eastern boundary as shown on map titled 'Koolkhan Draft Stormwater Management Plan Water Sampling points' (submitted to the EPA on 23/09/2003).		

Sampling Results (Point 1)-See also site plan below for sampling locations

Analyte	EPL Limit	Results/Retest	Comment
Boron	N/A – no limits on EPL	0.13 mg/L/	All concentrations of respective analytes are within acceptable ranges. Notes:
Oil & Grease		2 mg/L/	
pH		6.85	
Tannins		4 mg/L	
Total Suspended Solids		9 mg/L	

Attach results and email to: GREG NINNES greg.ninness@boral.com.au; cc John Kay john.kay@boral.com.au

Site Plan – Location of EPL Sampling Point 1:



RESULTS OF WATER ANALYSIS

1 sample supplied by Boral Timber on the 24th April, 2017 - Lab. Job No. F8839
 Analysis requested by Leslie Webb. Your Project: PO 190821
 (PO Box 437 GRAFTON NSW 2460).

PARAMETER	METHODS REFERENCE	Sample 1 Kooklan 18/04/17
pH		F8839/1
TANNINS (mg/L)	APHA 4500-H ⁺ -B ** inhouse	6.85
TOTAL SUSPENDED SOLIDS (mg/L)	GFC equiv. filter - APHA 2540-D	4
TOTAL OILS AND GREASE (mg/L)	APHA 5520-D (hexane extractable)	9
PHOSPHATE (mg/L P)	APHA 4500 P-G	2
NITRATE (mg/L N)	APHA 4500 NO ₃ ⁻ -F	0.349
NITRITE (mg/L N)	APHA 4500 NO ₂ ⁻ -I	<0.005
AMMONIA (mg/L N)	APHA 4500 NH ₃ -H	0.027
COPPER (mg/L)	Total - APHA 3125 ICPMS ^{*note 1&2}	4.200
IRON (mg/L)	Total - APHA 3125 ICPMS ^{*note 1&2}	0.005
MANGANESE (mg/L)	Total - APHA 3125 ICPMS ^{*note 1&2}	2.467
BORON (mg/L)	Total - APHA 3125 ICPMS ^{*note 1&2}	0.005
		0.13

Notes:

- Total available (acid soluble/ extractable) metals - samples acidified with nitric acid to <2pH.
- Metals/ salts analysed by ICP-MS (Inductively Coupled Plasma - Mass Spectrometry) or ICP-OES (Inductively Coupled Plasma - Optical Emission Spectrometry)
- 1 mg/L (milligram per litre) = 1 ppm (part per million) = 1000 µg/L (micrograms per litre) = 1000 ppb (part per billion)
- For conductivity - 1 dS/m = 1 mS/cm = 1000 µS/cm
- Analysis performed according to APHA, 2012, "Standard Methods for the Examination of Water & Wastewater", 22nd Edition, except where stated otherwise.
- Analysis conducted between sample arrival date and Report provision date
- ** denotes these test procedure or calculation are as yet not NATA accredited but quality control data is available
- .. Denotes not requested



checked:
 Graham Lancaster
 Laboratory Manager