

Environmental Monitoring Report – Deposited Dust Monitoring Data

Johns River Quarry

June 2023

Date Published: 1 September 2023



This monitoring report is to satisfy the requirements of Section 66 (6) of the Protection of the Environment and Operations Act 1997, to make available, within 14 days of obtaining any monitoring data that relates to pollution under an Environment Protection Licence

The monitoring of pollutants provided in this report is undertaken as per the requirements of Environment Protection Licence 4812 (EPL: 4812 –Boral Johns River Quarry)

Johns River Quarry Information	
Premise Details	Boral – Johns River Quarry
Address	Bulleys Road, Johns River NSW 2443
Licensee	Boral Resources (Country) Pty Ltd
EPL No	4812
EPL Location	https://app.epa.nsw.gov.au/prpoeoapp/ViewPOEOLicence.aspx?DOCID=129026&SYSUID=1&LICID=4812
Date of dataset update	01/09/2023

Monitoring data in this report relates to the monitoring undertaken in the reporting period for the following environmental pollutants:

- Deposited Dust

Deposited Dust

Deposited dust monitoring is conducted as per condition M2.2 of EPL 4812.

Qualifications related to Deposited Dust/Air Monitoring:

P1 Location of monitoring/discharge points and areas

P1.1 The following points referred to in the table below are identified in this licence for the purposes of monitoring and/or the setting of limits for the emission of pollutants to the air from the point.

EPA Identification No.	Type of Monitoring Point	Location Description
18	Ambient Air Monitoring	Monitor "Dust Point 1(Bulley Top Paddock)" located at coordinates -31.715331 152.691702
20	Ambient Air Monitoring	Monitor "Dust Point 2"(Bulley Flat Paddock)" located at coordinates -31.71948178 152.700485
21	Ambient Air Monitoring	Monitor "Dust Point 3 (Jones Property)" located at coordinates -31.7158934 152.707463
22	Ambient Air Monitoring	Monitor "Dust Point 4 (Bawn Property)" located at coordinates -31.71030485 152.7029657

M2.2 Air Monitoring Requirements

POINT 18,20,21,22

Pollutant	Units of Measure	Frequency	Sampling Method
Particulates – Deposited Matter	grams per square metre per month	Monthly	AM-19

Note: No limits apply to deposited dust monitoring as it is monitoring for the purposes of ambient air quality.

Johns River Quarry: EPL 4812 Deposited Dust Monitoring Results

Date	Site 1			Site 2			Site 3			Site 4			Comments
	EPA ID 18			EPA ID 20			EPA ID 21			EPA ID 22			
	Bulley Top Paddock			Bulley Flat Paddock			Jones Property			Bawn Property			
	Insoluble Solids	Ash	Total Solids	Insoluble Solids	Ash	Total Solids	Insoluble Solids	Ash	Total Solids	Insoluble Solids	Ash	Total Solids	
	g/m2/month	g/m2/month	g/m2/month	g/m2/month	g/m2/month	g/m2/month	g/m2/month	g/m2/month	g/m2/month	g/m2/month	g/m2/month	g/m2/month	
Jun-23	0.96	0.73	3.53	1.58	1.35	20.72	2.07	1.66	3.32	0.67	0.48	2.13	
May-23	2.15	1.59	3.56	0.84	0.63	1.49	9.45	5.84	14.75	1.15	0.74	1.69	Farming Activities at all sites
Apr-23	4.64	2.29	11.45	2.62	1.76	7.23	2.83	1.36	7.61	1.47	0.54	5.01	Farming Activities at all sites
Mar-23	4.85	2.91	13.64	6.82	3.19	17.06	2.05	0.99	5.71	2.47	1.43	6.44	Farming Activities at all sites
Feb-23	2.39	0.04	2.45	2.58	0.05	2.92	1.28	0.04	2.36	0.76	0.03	1.52	
Jan-23	3.67	3.43	18.79	4.21	4.12	23.52	8.88	6.26	26.99	3.11	1.00	6.75	Jan and Dec samples combined. Farming Activities at all sites
Dec-22													
Nov-22	1.21	0.41	1.34	9.78	3.57	16.61	1.64	0.88	3.21	1.02	0.55	1.40	Farming Activities at all sites
Oct-22	5.70	4.04	7.78	40.12	6.34	42.84	0.91	0.45	1.24	0.57	0.47	0.66	Farming Activities at all sites
Sep-22													September and October samples combined
Aug-22	2.00	1.73	2.97	89.78	49.69	131.30	0.82	0.78	1.47	1.56	1.29	3.71	Farming Activities at all sites
Jul-22	20.08	12.79	22.03	26.48	17.89	34.67	0.00	0.00	0.00	0.00	0.00	0.00	Farming Activities at all sites
Jun-22	1.76	1.33	4.27	0.48	0.11	2.61	1.49	0.19	2.80	0.45	0.05	2.12	
May-22	44.50	31.57	47.02	8.02	4.04	9.56	2.29	0.64	3.08	1.94	0.39	2.21	
Apr-22	3.06	2.03	3.21	5.32	2.46	12.37	1.08	0.54	2.74	3.47	2.05	5.89	



Johns River Quarry: EPL 4812 Deposited Dust Monitoring Results

Date	Site 1			Site 2			Site 3			Site 4			Comments
	EPA ID 18			EPA ID 20			EPA ID 21			EPA ID 22			
	Bulley Top Paddock			Bulley Flat Paddock			Jones Property			Bawn Property			
	Insoluble Solids	Ash	Total Solids	Insoluble Solids	Ash	Total Solids	Insoluble Solids	Ash	Total Solids	Insoluble Solids	Ash	Total Solids	
	g/m2/month	g/m2/month	g/m2/month	g/m2/month	g/m2/month	g/m2/month	g/m2/month	g/m2/month	g/m2/month	g/m2/month	g/m2/month	g/m2/month	
Mar-22	1.86	1.10	2.19	2.49	1.19	2.98	0.82	0.78	1.47	0.93	0.25	1.25	
Feb-22	1.09	0.41	1.13	24.15	10.02	35.11	0.00	0.00	0.00	1.27	0.36	1.29	
Jan-22	3.34	2.43	6.16	121.89	41.56	212.57	2.39	2.06	6.97	2.98	2.49	7.29	
Dec-21	1.38	0.24	1.64	3.58	1.41	7.16	1.16	0.35	1.49	1.60	0.54	1.96	
Nov-21	7.02	1.25	15.34	9.18	2.66	15.34	5.32	1.27	7.99	0.00	0.00	0.00	Site 4 Bottle broken
Oct-21	53.89	34.52	70.05	18.09	7.89	27.59	4.98	2.41	8.12	2.55	1.26	5.30	
Sep-21	2.07	1.42	3.92	38.76	24.86	49.80	1.41	1.00	3.40	1.00	0.66	3.04	
Aug-21	1.59	1.18	2.06	8.01	3.61	15.27	5.33	1.60	7.36	2.69	1.72	3.18	
Jul-21	0.69	0.50	10.19	7.76	4.76	14.60	0.58	0.40	2.16	1.02	0.71	1.83	
Jun-21	2.11	0.71	2.48	5.55	1.93	8.58	2.20	0.56	2.45	2.14	0.72	2.25	
May-21	2.42	1.09	3.51	9.99	6.01	12.91	0.87	0.41	1.94	2.51	1.05	2.70	
Apr-21	0.40	0.16	1.11	0.00	0.00	0.00	2.23	0.31	4.14	2.07	0.86	3.40	Site 2 Bottle broken (cattle)
Mar-21	0.39	0.15	1.10	0.00	0.00	0.00	0.92	0.78	2.33	1.00	0.57	1.60	Site 2 Bottle broken (Flood)
Feb-21	1.12	0.95	1.79	8.68	4.52	15.76	0.83	0.74	2.94	1.01	0.86	2.16	
Jan-21	2.41	0.85	4.29	5.82	1.65	15.36	2.69	1.68	8.48	1.73	1.22	6.37	
Dec-20	0.93	0.65	2.74	6.52	3.59	10.94	1.09	0.83	1.98	0.33	0.29	0.53	
Nov-20	3.35	1.25	7.63	4.21	1.32	6.21	3.47	1.21	4.95	2.03	0.84	2.27	
Oct-20	18.52	2.69	32.98	40.68	7.80	120.01	2.23	1.08	3.08	3.39	2.24	5.13	Bulley Slashing in paddocks
Sep-20	5.68	2.90	6.47	3.13	1.25	3.71	2.22	0.62	2.53	6.44	2.07	6.73	
Aug-20	2.84	1.26	3.72	9.75	6.04	13.83	1.98	0.94	2.67	5.13	2.20	6.12	

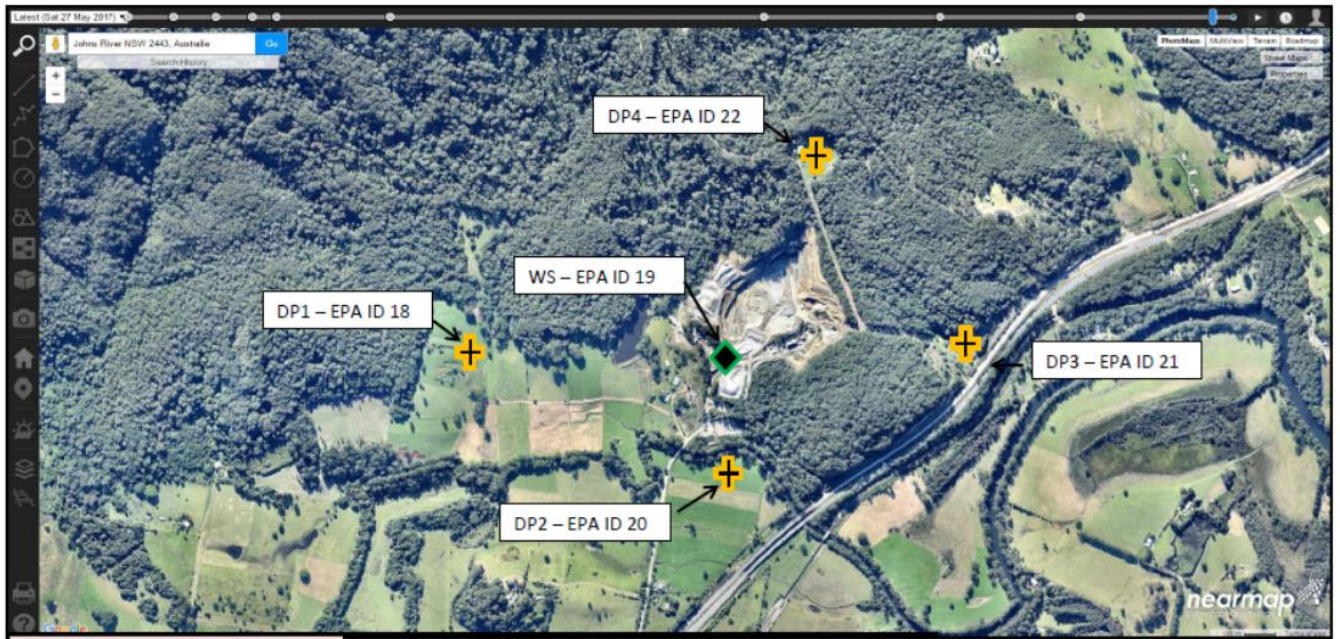


Johns River Quarry: EPL 4812 Deposited Dust Monitoring Results

Date	Site 1			Site 2			Site 3			Site 4			Comments
	EPA ID 18			EPA ID 20			EPA ID 21			EPA ID 22			
	Bulley Top Paddock			Bulley Flat Paddock			Jones Property			Bawn Property			
	Insoluble Solids	Ash	Total Solids	Insoluble Solids	Ash	Total Solids	Insoluble Solids	Ash	Total Solids	Insoluble Solids	Ash	Total Solids	
	g/m2/month	g/m2/month	g/m2/month	g/m2/month	g/m2/month	g/m2/month	g/m2/month	g/m2/month	g/m2/month	g/m2/month	g/m2/month	g/m2/month	
Jul-20	1.13	0.76	1.45	5.54	2.46	11.70	1.93	1.19	2.13	1.61	0.71	2.42	
Jun-20	0.95	0.77	2.73	1.30	1.03	3.22	0.48	0.42	2.29	1.65	1.09	2.69	
May-20	3.07	2.34	4.62	2.60	1.39	5.18	1.57	0.81	3.69	1.64	0.73	4.71	
Apr-20	1.32	0.81	2.10	4.63	2.91	11.20	1.04	0.70	1.66	0.92	0.78	2.33	
Mar-20	2.93	1.29	4.52	31.13	9.96	53.80	2.80	1.21	4.74	2.93	1.06	6.02	Bulley slashing paddocks
Feb-20	3.30	1.51	3.37	6.54	2.04	8.15	0.67	0.59	0.71	1.74	0.72	2.16	
Jan-20	4.26	2.79	7.47	17.16	4.59	29.66	2.00	1.66	4.96	1.54	1.32	4.32	
Dec-19	1.42	1.10	3.54	4.68	2.63	10.92	1.83	1.34	3.99	1.53	1.13	3.14	
Nov-19	2.04	1.45	3.23	11.32	3.79	19.07	3.14	2.26	3.80	2.39	1.40	2.97	
Oct-19	2.83	2.53	4.16	12.54	7.88	16.96	3.28	2.87	4.70	3.24	2.97	5.36	
Sep-19	2.01	1.72	3.27	2.45	1.81	5.69	1.30	0.87	5.21	1.36	1.28	3.52	
Aug-19	1.43	0.59	1.58	2.31	0.99	3.46	2.87	1.39	4.16	1.70	1.18	1.92	
Jul-19	1.05	0.84	2.20	0.83	0.60	1.78	0.76	0.54	2.25	0.51	0.38	1.97	
Jun-19	3.25	1.30	3.70	4.51	1.28	6.90	2.18	0.50	2.29	2.08	0.46	2.27	
May-19	2.33	1.75	3.07	2.33	1.18	4.09	1.79	0.90	2.91	1.51	0.88	2.53	
Apr-19	1.11	0.96	2.43	6.21	1.99	10.10	0.82	0.69	1.33	0.91	0.65	2.13	
Mar-19	2.18	2.16	4.79	2.45	1.75	9.16	0.92	0.76	5.05	1.56	1.26	5.85	
Feb-19	5.54	3.89	6.52	5.22	3.46	7.63	3.97	3.07	4.31	3.28	2.49	3.76	
Jan-19	1.34	0.80	2.79	1.13	0.65	2.44	1.03	0.60	1.85	1.74	0.81	3.37	



Johns River Quarry Dust Monitoring Locations



Deposited Dust Monitoring Results - Corrections Log

Details of corrections made to published data due to incorrect or misleading data^{3.7.7}

Date of data (sample date)	Old published data	Correct updated data	Reason for Update/Correction	Update Person	Date corrected data published	Comments