



Build something great™

# Pollution Incident Response Management Plan

## HALL QUARRY

Version Six: 31<sup>st</sup> August 2016



## DOCUMENT CONTROL SHEET

Rev.	Date	Prepared by	Approved By	Revision Details
01	20 Aug 2012	Rod Johnson	Rod Johnson	Document Created
02	05 Apr 2013	Nathan Jeffery	Rod Johnson	Format Changes Added additional maps Document control sheet added Added Chemical Quantities
03	22 Sep 2013	Rod Johnson	Rod Johnson	Format Changes Internal Contacts updated Public Documented updated
04	01Sep2014	Rachael Duff	Rod Johnson	Internal contacts updated Risk ratings updated Incident #2 response updated Sediment dam #2 added
05	15Sep2015	Rachael Duff	Rod Johnson	Internal contacts updated Sediment dam #2 included and land farm included on site map p.34 Appendix 1 - Pollution substances on site assessment reviewed and review date changed Appendix 2 - Added PPE Appendix 2 – Changes to actions– incident # 5,9,11 Pollutant assessment- 'note' added at end/petrol and LPG added Appendix 5 – added Immediate Reporting Contacts Sheet
06	31 <sup>st</sup> Aug 2016	Rachael Duff	Rod Johnson	Updated regulator to SafeWork NSW – p.6,14,36,37,38 Reviewed and review date changed on pollutant substance list p.8 Reviewed and review date changed on risk assessment p.17 Environmental contact and protocol changed and incident 6 updated– Appendix 2 p.20-32 Added sediment dam at stockpile area on map p.34 updated contact list p.38

Current Rev.	Date Implemented	PIRMP Test Schedule	Date for Next Review
06	31 <sup>st</sup> August 2016	12 months	31 <sup>st</sup> August 2017

## TABLE OF CONTENTS

1.	PURPOSE.....	4
2.	LEGISLATIVE REQUIREMENTS.....	4
3.	DEFINITION OF A POLLUTION EVENT.....	4
4.	SCOPE .....	6
5.	POTENTIAL POLLUTING SUBSTANCES.....	6
6.	ROLES AND RESPONSIBILITIES.....	10
7.	INTERNAL POLLUTION INCIDENT REPORTING.....	11
8.	EXTERNAL POLLUTION INCIDENT REPORTING.....	12
9.	POLLUTION INCIDENT AUTHORITY CONTACT LIST.....	13
10.	INCIDENT RESPONSE TRAINING.....	14
11.	PIRMP AUDIT.....	15
12.	PIRMP REVIEW.....	15
12.1	EVENT BASED.....	15
12.2	TIME BASED.....	15
	APPENDIX 1: RISK ASSESSMENT ON POTENTIAL IMPACTS...	16
	APPENDIX 2: PIRMP RESPONSE ACTIONS.....	19
	APPENDIX 3: HALL QUARRY LOCATION MAP.....	32
	APPENDIX 4: HALL QUARRY REFERENCE MAP.....	33
	APPENDIX 5: HALL QUARRY AFFECTED AREA MAP.....	34
	APPENDIX 6: POLLUTION INCIDENT NOTIFICATION LOG.....	35

## 1. PURPOSE

The purpose of the Hall Quarry Pollution Incident Response Plan is to:

- Provide direction to the staff at Hall Quarry in responding to pollution incidents at the Hall operations;
- Ensure timely communication about a pollution incident is provided to staff at the premises, the Environment Protection Authority (EPA), other relevant authorities specified in the Protection of the Environment Legislation Amendment Act (POELA Act) (including Yass Valley Council, NSW Ministry of Health, Work Cover NSW, and Fire and Rescue NSW) and persons outside the operations who may be affected by the impacts of a pollution incident;
- Minimise and control the risk of a pollution incident at Hall Quarry by identifying key risks and planned actions to minimise and manage those risks;
- Detail the training requirements for this plan, identifying persons responsible for implementing it, and ensuring that the plan is regularly tested for accuracy, currency and suitability.

## 2. LEGISLATIVE REQUIREMENTS

The specific requirements for a PIRMP are set out in Part 5.7A of the POEO Act and the Protection of the Environment Operations (General) Regulation 2009 (POEO(G) Regulation). In summary, this provision requires the following:

- All holders of environment protection licences must prepare a pollution incident response management plan (section 153A, POEO Act).

- The plan must include the information detailed in the POEO Act (section 153C) and be in the form required by the POEO(G) Regulation (clause 98B).
- Licensees must keep the plan at the premises to which the environment protection licence relates (section 153D, POEO Act).
- Licensees must test the plan in accordance with the POEO(G) Regulation (clause 98E).
- if a pollution incident occurs in the course of an activity so that material harm to the environment is caused or threatened, licensees must immediately implement the plan (section 153F, POEO Act)

### 3. DEFINITION OF 'POLLUTION INCIDENT'

The definition of a pollution incident is:

*“pollution incident means an incident or set of circumstances during or as a consequence of which there is or is likely to be a leak, spill or other escape or deposit of a substance, as a result of which pollution has occurred, is occurring or is likely to occur. It includes an incident or set of circumstances in which a substance has been placed or disposed of on premises, but it does not include an incident or set of circumstances involving only the emission of any noise.”*

A pollution incident is required to be notified if there is a risk of 'material harm to the environment', which is defined in section 147 of the POEO Act as:

a) harm to the environment is material if:

- i. it involves actual or potential harm to the health or safety of human beings or to ecosystems that is not trivial, or

ii. it results in actual or potential loss or property damage of an amount, or amounts in aggregate, exceeding \$10,000 (or such other amount as is prescribed by the regulations), and

b) loss includes the reasonable costs and expenses that would be incurred in taking all reasonable and practicable measures to prevent, mitigate or make good harm to the environment.

Hall Quarry is now required to report pollution incidents immediately to the EPA, NSW Health, Fire and Rescue NSW, SafeWork NSW and the local council.

## 4. SCOPE

This PIRMP must be followed by employees, contractors and visitors of Hall Quarry, to assist in the early response to and reporting of a pollution incident.

## 5. POTENTIAL POLLUTING SUBSTANCES

The main hazards to human health and the environment at Hall Quarry are included in the following table.

LIST OF POLLUTING SUBSTANCE STORAGES/USES AT SITE: INITIAL ASSESSMENT (all Chemicals listed in this sheet are to be subjected to a risk assessment)							
Site Name: Hall Quarry					Responsible Person: Quarry Manager		Date: 31/8/16
Name / description	Covered under Haz Chemicals/SDS?	Amount stored	Location of storage	Map reference	Need for early warning <sup>1</sup>	Current controls	See Risk Ass & PIRMP Response Action (see Below)
<b>CHEMICALS/FUELS/LUBRICANTS (raw materials and products which can cause pollution)</b>							
Diesel	Class 3	25 000 ltrs	Diesel Storage Area	Ref No #1	N/A	<ul style="list-style-type: none"> <li>• Bunding</li> <li>• PIRMP</li> <li>• Training</li> <li>• Spill Kits</li> <li>• SOP</li> <li>• Inductions</li> <li>• Fire Fighting Equipment</li> <li>• Security</li> </ul>	Incident #1-3
Oils/Solvents	Class 3	Packaged goods up to 2 000 ltrs	Oil Storage Shed at Workshop	Ref No #2	N/A	<ul style="list-style-type: none"> <li>• Bunding</li> <li>• PIRMP</li> <li>• Training</li> <li>• Flammable Cabinet</li> <li>• Spill Kits</li> <li>• Inductions</li> <li>• Fire Fighting Equipment</li> <li>• Security</li> </ul>	Incident #4
Lubricants, Gases	Class 2	Variable	Maintenance Workshop	Ref No #2	N/A	<ul style="list-style-type: none"> <li>• Fire Extinguishers</li> <li>• Concrete Floor</li> <li>• Enclosed Shed</li> <li>• Containment</li> </ul>	Incident #4

<sup>1</sup> Early warnings relate to informing neighbours who may be affected by the emission of this substance. If this substance is of a type and quantity which may reach neighbours then early warning assessment of actions is required to be undertaken.

						Cages and Cabinets	
Oils/Fuel	Class 3	Variable	Plant and Equipment (Workshop area)	Ref No #2	N/A	<ul style="list-style-type: none"> <li>• PIRMP</li> <li>• Training</li> <li>• Spill Kits</li> <li>• SOP</li> <li>• Inductions</li> <li>• Fire Fighting Equipment</li> <li>• Security</li> </ul>	Incident #4
<b>MATERIALS (eg stockpiles, silos, bulk solids etc)</b>							
Cement Silo	N/A	25 Tonne	Pugmill Cement Silo	Ref No #8 & #9	N/A	<ul style="list-style-type: none"> <li>• Cement Silo Structure</li> <li>• Silo Filters</li> <li>• Maintain manageable levels</li> <li>• Security</li> </ul>	Incident #11
Aggregate Stockpiles	N/A	Variable	Dedicated on site	Ref No #8 & #9	N/A	<ul style="list-style-type: none"> <li>• Water sprays</li> <li>• Water Cart</li> <li>• Maintain manageable levels</li> <li>• Security</li> </ul>	Incident #5
<b>AQUEOUS (eg dams, wastewater tanks, other water storage area)</b>							
Water Storage Dam (Sediment)	N/A	Variable		Ref No #6	N/A	<ul style="list-style-type: none"> <li>• Continue to use for dust suppression</li> <li>• Ensure pumps are maintained through scheduled maintenance</li> <li>• Discharge monitoring</li> </ul>	Incident #6
Storm Water Drains	N/A	Variable	Site	N/A	N/A	<ul style="list-style-type: none"> <li>• Straw Bales</li> <li>• Rubber and</li> </ul>	Incident #6



						<ul style="list-style-type: none"> <li>Earthen Berms</li> <li>Audits and Inspections</li> </ul>	
<b>SUBSTANCES IN PROCESSES (substances which could be emitted from operational process i.e. treatment plants, vehicles etc)</b>							
<b>Name / description</b>	<b>Covered under Haz Chemicals/MSDS?</b>	<b>Amount stored</b>	<b>Location of storage</b>	<b>Map reference</b>	<b>Need for early warning<sup>2</sup></b>	<b>Current controls</b>	<b>See Risk Ass &amp; PIRMP Response Action (see Below)</b>
Mobile Plant (onsite) BORAL	Class 3	Up to 15 MP on site	Dedicated on site	N/A	N/A	<ul style="list-style-type: none"> <li>Spill Kits</li> <li>Pre start checks</li> <li>PIRMP</li> <li>Training</li> </ul>	Incident #7
Mobile Plant Contractor/visitor	Class 3	Variable	Variable Locations	N/A	N/A	<ul style="list-style-type: none"> <li>Spill Kits</li> <li>Training</li> <li>Inductions</li> </ul>	Incident #8
Car Parking up to 30 vehicles Gas/Petrol	Class 3 – unleaded Class 2.1 - LPG	Variable	Site Office/Carparks	Ref No #4/5	N/A	<ul style="list-style-type: none"> <li>Spill Kits</li> <li>Training</li> </ul>	Incident #9
Traffic Areas (dust, chem. leaks & loss)	Class 3	N/A	Dedicated on site	N/A	N/A	<ul style="list-style-type: none"> <li>Training</li> <li>Water cart</li> <li>Spill Kits</li> </ul>	Incident #10

Note: If pre-coat tank is re commissioned pre-coat substance will need to be added above.

<sup>2</sup> Early warnings relate to informing neighbours who may be affected by the emission of this substance. If this substance is of a type and quantity which may reach neighbours then early warning assessment of actions is required to be undertaken.

## 6. ROLES AND RESPONSIBILITIES

<b>Position</b>	<b>Responsibility</b>
<i>Employees and Contractors</i>	<p>Following the procedures outlined in the PIRMP and related documents</p> <p>Immediately alerting Supervisor or Team Leader of any environmental incidents or near-misses.</p>
<i>Team Leaders / Front Line Supervisors</i>	<p>Following the procedures outlined in the PIRMP and related documents</p> <p>Immediately alerting Site/Quarry Manager or, in case of their unavailability, Environmental Representative or Environment Manager of any potentially material environmental incidents or near-misses.</p> <p>Conducting incident investigations.</p>
<i>Site / Operations Manager and/or Site Environmental Coordinator and/or Environment Manager</i>	<p>Authorisation of the PIRMP</p> <p>Administration, maintenance and implementation of the PIRMP</p> <p>Assessing whether the incident has caused or threatens “material environmental harm” and, if so, immediately notifying all Appropriate Regulatory Authorities.</p> <p>Ensuring that investigations are undertaken to a level corresponding to the level of risk and impact.</p>

## 7. INTERNAL POLLUTION INCIDENT REPORTING

Any pollution incident satisfying the **material harm** threshold must be immediately reported to relevant statutory authorities by either the Site/Operations Manager, or Environment Manager.

In cases where “material harm” level cannot be immediately assessed or insufficient information comes to hand on the severity of the incident, the general advice is to err on the side of caution and notify the Relevant Authorities with a qualification that the situation could not yet be fully assessed.

Until further notice the following procedure needs to be followed:

1. When a pollution incident occurs, a person who has become aware of it must immediately bring it to the attention of his/her immediate Supervisor or Manager
2. If necessary, first ring “ 000 ” for Emergency Services
3. At least one of the following BCM personnel must be contacted **immediately**:

Whilst personal contact details for the following are available in the Controlled on site Pollution Incident Response Management Plan they do not appear in this public document.

Name	Function	Phone number	Mobile number
Nigel Simms	Hall Quarry Manager		
Scott Dowling	Hall Quarry Supervisor		
Michael Holz	Quarry Operations Manager		
Philip Paterson	Environmental Contact		
Rod Johnson	Environment Manager – NSW/ACT		

4. Nigel Simms or in case of his unavailability one of the Senior Management personnel listed above, is to **immediately** notify all Appropriate Regulatory Authorities specified in Section 4.3.
5. In borderline situations, where the exceedance of the trigger level of “material harm” of a pollution incident may not be clear, a quick assessment including consultation with

Boral environmental personnel should be undertaken to help the decision whether to notify or not.

6. Boral's Senior Management must be informed promptly of the fact of immediate notification to the Authorities. This includes environmental personnel listed above, as well as Michael Holz, David Bolton, Greg Price and Richard Strauch.

## 8. EXTERNAL POLLUTION INCIDENT REPORTING

As the legislation requires that notification must be done immediately upon becoming aware of the pollution incident, it is unlikely that a detailed picture will be available for reporting.

Notwithstanding, it seems that some of the Government Authorities prepared a detailed questionnaire which is being filled at the time of this initial notification. Under the stress of incident handling it could be easy to provide a hasty, inaccurate estimate of the situation when answering these questions.

Therefore, the notification should be restricted to the facts known and nothing should be assumed or guessed. The details will be provided to the asking Authority later when more information comes to hand.

The initial notification should include as much of the following information (if known) as possible:

- location and time of the pollution incident
- type of the incident (spill, fire, unlicensed harmful discharge, etc)
- assessed level of incident gravity: "it seems to be..." (e.g. "a relatively minor spill"; "major fire", "explosion limited to one building", etc.)
- whether the Emergency Services have been required to attend.

Unless known for a fact, the answers to other questions should be politely deferred until a better assessment of the situation can be made.

The Boral person who is responsible for notifying the Authorities (Site/Operations Manager or Environment Manager) about the incident must prepare a Notification Log (a suitable form is Hall Quarry – PIRMP\_V6

attached) with the details of time of notifications and the persons who took to the call. The Authorities are expected to log the calls but early indications are that this is not always the case.

Notification of all Appropriate Government Authorities (at least 5 entities) may take considerable time. Delays may be experienced connecting to the right person or no contact may be possible after hours. All such instances should be recorded in the Notification Log.

## 9. POLLUTION INCIDENT AUTHORITY CONTACT LIST

<b>Government Authority - compulsory notifications</b>	<b>Emergency notification phone number</b>
EPA – Environment Line	131 555
Fire and Rescue NSW (FRNSW)	1300 729 579
Yass Valley Council	6226 1477
Public Health Unit (Greater Southern AHS) – Goulburn GS PHU	HealthLink (24 hr)- 0- 1800 063 635 Head Office- Goulburn- 0- 4824 1840
SafeWork Authority of NSW	131050 Company ABN asked: 51 000 187 002
<b>Government Authority - ring if relevant</b>	<b>Emergency notification phone number</b>
Roads and Maritime Services (road spills)	132 701
NSW Office of Water	8838 7885
Bush Fire Control Officer	1800 049 933
Poisons Information Centre	131 126
Essential Energy (power line emergencies)	13 23 56
Police & Ambulance	000

Communication with the local community may also be undertaken depending on the circumstances of the pollution incident. Hall Quarry would consider the following options for providing Early Warning and ongoing information to the community on pollution incidents:

- Direct phone contact with any local residents directly impacted by the pollution incident
- Letter Box drops of incident information and site contacts to local residents impacted by the pollution incident
- The inclusion of incident details within the relevant Quarry Community Newsletter

The Stakeholder Relations Manager can assist in the process of communicating with the community, as per the Stakeholder Engagement Plan for the site.

## 10. INCIDENT RESPONSE TRAINING

Hall Quarry will implement the Pollution Incident Response Management Plan by training or providing information to relevant employees and contractors in relevant areas of the Plan.

Training or information will be provided on the following;

- The contents and intent of this PIRMP,
- The roles and responsibilities of site staff in relation to this PIRMP
- Spill response procedures;
- General environmental awareness; and / or
- Hazardous materials awareness.

## 11. PIRMP AUDIT

The objectives of an audit are to maintain compliance with this plan. Internal audits of this Plan will be undertaken every 3 years.

Routine testing of the plan will be conducted annually, and can be completed through the following methods:

- Simulated environmental emergency, or
- Desktop simulations.

## 12. PIRMP REVIEW

Revisions are to be coordinated by the Site Manager and Environmental Representative.

The objectives of a review are:

- To maintain compliance with the statutory requirements, and
- To identify opportunities for improvement in the Plan, and reduce the risk to human health and the environment

### *12.1. EVENT BASED*

Events which may trigger a review of this Plan or its associated documents include:

- Within 1 month of reporting to the nominated parties in accordance with the plan, after a pollution incident, or
- Modification/Improvement to the system

### *12.2. TIME BASED*

Hall Quarry will review this management plan routinely every 12 months. The Plan review will include:

- This Document, and
- Legislation, Approval and Licence changes.

# APPENDIX 1.

## RISK ASSESSMENT on POTENTIAL IMPACTS

Hazard and Likelihood Risk Assessment and Corrective Control Measures									
Site: Hall Quarry				Responsible Person: Quarry Manager/Supervisor			Review Date: 31 <sup>st</sup> August 2016		
Name / ref of pollutant/ chemicals	Description of Hazard / Incident leading to hazard	Consequence	Likely hood	Risk	Impact on neighbours <sup>3</sup>	Control Measures Corrective Action Coverage under other Plans	Responsible person	Action date	
Diesel	<b>Incident #1</b> Catastrophic failure of one/both above ground tanks	1	2	L2	N/A	Consequence: (Incidental): Failure resulting in loss of all or substantial volume of tanks would be captured entirely by existing primary bund with no release to soil or water.  Likelihood: (Unlikely): Due to location within bund, damage to tanks is unlikely to occur from external equipment. In addition tanks are maintained in good structural integrity with low risk of failure through corrosion.	As per PIRMP action plan	When required	
	<b>Incident #2</b> Loss of diesel outside bund during refuelling/fuelling operations.	2	3	M6	N/A	Consequence: (Minor): Failure resulting in loss/leakage from fuelling or re-fuelling from hose, nozzle or plant/equipment would be captured by a secondary bund or spill kill with minimal release to soil.  Likelihood: (Possible): Due to location within the bund an incident while re-fuelling and fuelling is likely to occur on some occasions. Hoses and refuelling equipment are maintained with low risk of failure.	As per PIRMP action plan	When required	
	<b>Incident #3</b> Loss of fuel within bounded area with	2	2	L4	N/A	Consequence: (Minor): Failure resulting in loss of all or substantial volume of tanks would be captured entirely by primary bund with minimal release to soil.	As per PIRMP action plan	When required	

<sup>3</sup> If the incident may impact on neighbours then it will need to trigger the early warnings assessment and actions



	leaking or open drain valve					Likelihood: (Unlikely): Drain valve, hoses and refuelling equipment are maintained in good structural integrity with low risk of failure The drain valve is locked at all times.		
<b>Oils/Solvents</b>	<b>Incident #4</b> Loss of oils solvents inside bund during delivery and or use	1	2	L2	N/A	Consequence :(Incidental): Failure resulting in loss of oils/solvents from packaged goods would be captured entirely by existing primary bund with no release to soil or water.  Likelihood :(Unlikely): Due to location within the bund, spillage during delivery and use is unlikely to occur. In addition hoses and decanting equipment are maintained in good structural integrity with low risk of failure.	As per PIRMP action plan	When required
<b>Aggregate stockpiles</b>	<b>Incident #5.</b> Excessive airbourne dust from stockpiled material	1	3	L3	Y	Consequence: (Incidental): Excessive dust from stockpile during high winds causing nuisance to surrounding area.  Likelihood :(Possible): Stockpiles are maintained to a manageable level on a monthly basis. Use of water sprinklers and water cart onsite during windy periods.	As per PIRMP action plan	When required
<b>Sediment Dams</b>	<b>Incident #6</b> Catastrophic failure of one or more sediment dams releasing large volumes of water into on-site and off-site water courses (i.e creek).	2	2	L4	N/A	Consequence: (Minor): Catastrophic failure of one or more sediment dams are likely to result in off-site impacts to water courses which would predominantly reduce water quality over a short period of time. As such, impact to the environment/human health is not considered to be significant.  Likelihood: (Unlikely): Dams are frequently monitored and inspected for levels and integrity.  Risk Assessment = Minor Vs Unlikely = L (4)  <b>Note:</b> For PIRMP purposes overflow events during extreme wet weather will be reported under POEO Licence obligations and not Immediate Reporting.	As per PIRMP action plan	When required
<b>Mobile Plant</b>	<b>Incident #7</b> Mobile plant, hydraulic hose or fuel tank failure	1	3	L3	N	Consequence: (Incidental): Failure from fuel tank or hydraulic hoses would be maintain to a small localised area on site.  Likelihood :(Possible): Hose or fuel tank failure from mobile plant would be minimal as prestart and regular maintenance programs are in place to capture and prevent such occurrences. Spills kits also maintain and available in various areas.	As per PIRMP action plan	When required

<b>Mobile plant/ Contractor, Visitor</b>	<b>Incident #8</b> Mobile plant, hydraulic hose or fuel tank failure	1	3	L3	N	<p>Consequence: (Incidental): Failure from fuel tank or hydraulic hoses would be maintain to a small localised area on site.</p> <p>Likelihood :(Possible): Hose or fuel tank failure from mobile plant would be minimal as prestart and regular maintenance programs are in place to capture and prevent such occurrences. Spills kits also maintain and available in various areas. Inductions for all contractors demonstrating their accountabilities and responsibilities for reporting environmental incidents.</p>	As per PIRMP action plan	When required
<b>Car Park</b>	<b>Incident #9</b> Ruptured fuel tank	1	2	L2	N	<p>Consequence: (Incidental): Failure from fuel tank or hydraulic hoses would be maintain to a small localised area on site.</p> <p>Likelihood :(unlikely): Hose or fuel tank failure from employee or visitor car would be minimal. Car park area is fully sealed. Spill kits also maintain and available in various areas</p>	As per PIRMP action plan	When required
<b>Traffic areas (dust)</b>	<b>Incident # 10</b> Surface dust from mobile plant	1	3	L3	Y	<p>Consequence: (Incidental): Dust created form continuous mobile plant operations across site</p> <p>Likelihood :(Possible): Main areas watered with water cart in high wind conditions</p>	As per PIRMP action plan	When required
<b>Cement Silo</b>	<b>Incident # 11</b> Dust emissions from Cement Silo failure/overfill	1	2	L2	Y	<p>Consequence: (Incidental): Cement dust emitted to atmosphere from a failure in the silo or filter would have very minimal offsite impact due to the location of the silo within the quarry</p> <p>Likelihood :(unlikely): silo filled with pressurised flow from powder tanker, however location and frequency of silo usage decreases off site impact. Equipment maintenance and Integrity of silo structure reduces risk of failure.</p>	As per PIRMP action plan	When required

## APPENDIX 2.

### PIRMP RESPONSE ACTIONS

#### Incident No 1

<b>Incident #1</b>	<p><b>Catastrophic failure of one/both diesel tanks.</b></p> <p>Actions Required:</p> <ul style="list-style-type: none"> <li>• Contact all relevant people/department (refer to Immediate Reporting Contact Sheet)</li> <li>• Ensure all required PPE is used</li> <li>• Ensure bunds are capturing full volume of diesel</li> <li>• Ensure bund integrity is sound throughout the entire period of incident (i.e. periodic inspections)</li> <li>• Contact service provider (Caltex No. 1800033111 or Transpacific 02 96007185) to pump-out bund contents</li> <li>• Area to be restricted to Incident Response Personnel</li> <li>• Ensure spill kit available for any release from bund</li> <li>• If any release from bund onto unsealed soil/surface water - Environmental Consultants to be engaged to investigate and remediate contamination.</li> <li>• Repair/replace tanks</li> <li>• Refuel tanks</li> </ul> <p>Inspect bund for ongoing serviceability</p>
<b>Alarm raising</b>	<p>Any personnel involved or witnessing incident to report to immediate supervisor and PIRMP actions to be implemented.</p>
<b>Emergency Controller</b>	<ul style="list-style-type: none"> <li>• – Quarry Manager</li> <li>• Call service provider (Quarry Manager)</li> <li>• Spill Kit manager (Supervisor)</li> <li>• Periodic inspections and update reporting of site and bund (Quarry Manager)</li> </ul>
<b>Scale of incident</b>	<p>Incident would be restricted to Diesel/Pre coat storage area with minimal external impact, however, potential for bund overflow or failure may result in soil and surface water contamination that will require specialist investigation/remediation.</p>
<b>Evacuate</b>	<p>Only if fire or explosion potential exists. Quarry Manager and any advice provided by Fire Dept as part of attendance after immediate notification.</p>
<b>Communications</b>	<p>Internal:</p> <ul style="list-style-type: none"> <li>• Quarry Manager</li> <li>• Rod Johnson &amp;/or Phil Paterson – Environmental Representative</li> </ul>

	<p>External mandatory:</p> <ul style="list-style-type: none"> <li>• Immediate Reporting Contact Sheet to be used</li> </ul> <p>External non-mandatory: N/A</p>
<b>Rescuer / respondent + safety checks</b>	As per Site Emergency Plan or Fire Department as part of Immediate Reporting
<b>Rescue + First Aid</b>	As per Site Emergency Plan or Fire Department as part of Immediate Reporting
<b>Clean up and Waste disposal</b>	Service Provider to dispose of diesel and advise on required clean-up.
<b>Reporting and re-preparedness</b>	<p>See protocol:</p> <ul style="list-style-type: none"> <li>• Incident Notification Protocol (GRP-HSEQ-3-02) and Environmental Incident Flowchart</li> </ul>

## Incident No 2

<b>Incident #2</b>	<p><b>Loss of Fuel due to filling and refueling from one/both diesel tanks.</b></p> <p>Actions Required:</p> <ul style="list-style-type: none"> <li>• Press emergency stop button if needed and place hose pump inside bund area.</li> <li>• Contact all relevant people/department (refer to Immediate Reporting Contact Sheet)</li> <li>• Ensure all required PPE is used</li> <li>• Area to be restricted to Incident Response Personnel</li> <li>• Ensure spill kit available for any release from bund</li> <li>• If any release onto unsealed soil/surface water - Environmental Consultants to be engaged to investigate and remediate contamination.</li> <li>• Ensure maintenance to failed equipment occurs or an out of service tag is to be placed on the equipment to prevent possible reoccurrence of spills.</li> <li>• Any product used to be disposed of appropriately at site land farm or taken to licensed facility.</li> </ul>
<b>Alarm raising</b>	Any personnel involved or witnessing incident to report to immediate supervisor and PIRMP actions to be implemented.
<b>Emergency Controller</b>	<ul style="list-style-type: none"> <li>• – Quarry Manager</li> <li>• Call service provider (Quarry Manager)</li> <li>• Spill Kit manager (Supervisor)</li> <li>• Periodic inspections and update reporting of site and bund (Quarry Manager)</li> </ul>
<b>Scale of incident</b>	Incident would be restricted to Diesel/Precoat storage area with minimal external impact. However, potential for bund overflow or failure may result in soil and surface water contamination that will require specialist investigation/remediation.

<b>Evacuate</b>	Only if fire or explosion potential exists. Quarry Manager and any advice provided by Fire Dept as part of attendance after immediate notification.
<b>Communications</b>	Internal: <ul style="list-style-type: none"> <li>• Quarry Manager</li> <li>• Rod Johnson &amp;/or Phil Paterson – Environmental Representative</li> </ul> External mandatory: <ul style="list-style-type: none"> <li>• Immediate Reporting Contact Sheet to be used</li> </ul> External non-mandatory: N/A
<b>Rescuer / respondent + safety checks</b>	As per Site Emergency Plan or Fire Department as part of Immediate Reporting
<b>Rescue + First Aid</b>	As per Site Emergency Plan or Fire Department as part of Immediate Reporting
<b>Clean up and Waste disposal</b>	Service Provider to dispose of diesel and advise on required clean-up.
<b>Reporting and re-preparedness</b>	See protocol: <ul style="list-style-type: none"> <li>• Incident Notification Protocol (GRP-HSEQ-3-02) and Environmental Incident Flowchart</li> </ul>

### Incident No 3

<b>Incident #3</b>	<p><b>Failure of drain valve on bund.</b></p> <p>Actions Required:</p> <ul style="list-style-type: none"> <li>• Contact all relevant people/department (refer to Immediate Reporting Contact Sheet)</li> <li>• Ensure all required PPE is used</li> <li>• Ensure bunds are capturing full volume of diesel</li> <li>• Ensure bund integrity is sound throughout the entire period of incident (i.e. periodic inspections)</li> <li>• Contact service provider (Caltex No. 1800033111 or Transpacific 02 96007185) to pump-out bund contents</li> <li>• Area to be restricted to Incident Response Personnel</li> <li>• Ensure spill kit available for any release from bund</li> <li>• If any release from bund onto unsealed soil/surface water - Environmental Consultants to be engaged to investigate and remediate contamination.</li> <li>• Repair/replace tanks</li> <li>• Refuel tanks</li> </ul>
--------------------	---

	Inspect bund for ongoing serviceability
<b>Alarm raising</b>	Any personnel involved or witnessing incident to report to immediate supervisor and PIRMP actions to be implemented.
<b>Emergency Controller</b>	<ul style="list-style-type: none"> <li>• Quarry Manager</li> <li>• Call service provider (Quarry Manager)</li> <li>• Spill Kit manager (Supervisor)</li> <li>• Periodic inspections and update reporting of site and bund (Quarry Manager)</li> </ul>
<b>Scale of incident</b>	Incident would be restricted to chemical storage area with minimal external impact. However, potential for bund overflow or failure may result in soil and surface water contamination that will require specialist investigation/remediation.
<b>Evacuate</b>	Only if fire or explosion potential exists. Quarry Manager and any advice provided by Fire Dept as part of attendance after immediate notification.
<b>Communications</b>	<p>Internal:</p> <ul style="list-style-type: none"> <li>• Quarry Manager</li> <li>• Rod Johnson &amp;/or Phil Paterson – Environmental Representative</li> </ul> <p>External mandatory:</p> <ul style="list-style-type: none"> <li>• Immediate Reporting Contact Sheet to be used</li> </ul> <p>External non-mandatory: N/A</p>
<b>Rescuer / respondent + safety checks</b>	As per Site Emergency Plan or Fire Department as part of Immediate Reporting
<b>Rescue + First Aid</b>	As per Site Emergency Plan or Fire Department as part of Immediate Reporting
<b>Clean up and Waste disposal</b>	Service Provider to dispose of diesel and advise on required clean-up.
<b>Reporting and re-preparedness</b>	<p>See protocol:</p> <ul style="list-style-type: none"> <li>• Incident Notification Protocol (GRP-HSEQ-3-02) and Environmental Incident Flowchart</li> </ul>

## Incident No 4

<b>Incident #4</b>	<p><b>Loss off oil/solvents, packaged goods.</b></p> <p>Actions Required:</p> <ul style="list-style-type: none"> <li>• Contact all relevant people/department (refer to Immediate Reporting Contact Sheet)</li> <li>• Ensure all required PPE is used</li> <li>• Ensure bunds are capturing full volume of oil/solvents</li> </ul>
--------------------	--

	<ul style="list-style-type: none"> <li>• Ensure bund integrity is sound throughout the entire period of incident (i.e. periodic inspections)</li> <li>• Contact service provider (Caltex No. 1800033111 or Transpacific 02 96007185) to pump-out bund contents</li> <li>• Area to be restricted to Incident Response Personnel</li> <li>• Ensure spill kit available for any release from bund</li> <li>• If any release from bund onto unsealed soil/surface water - Environmental Consultants to be engaged to investigate and remediate contamination.</li> <li>• Inspect bund for ongoing serviceability</li> </ul>
<b>Alarm raising</b>	Any personnel involved or witnessing incident to report to immediate supervisor and PIRMP actions to be implemented.
<b>Emergency Controller</b>	<ul style="list-style-type: none"> <li>• Quarry Manager</li> <li>• Call service provider (Quarry Manager)</li> <li>• Spill Kit manager (Supervisor)</li> <li>• Periodic inspections and update reporting of site and bund (Quarry Manager)</li> </ul>
<b>Scale of incident</b>	Incident would be restricted to chemical storage area with minimal external impact. However, potential for bund overflow or failure may result in soil and surface water contamination that will require specialist investigation/remediation.
<b>Evacuate</b>	Only if fire or explosion potential exists. Quarry Manager and any advice provided by Fire Dept as part of attendance after immediate notification.
<b>Communications</b>	<p>Internal:</p> <ul style="list-style-type: none"> <li>• Quarry Manager</li> <li>• Rod Johnson &amp;/or Phil Paterson – Environmental Representative</li> </ul> <p>External mandatory:</p> <ul style="list-style-type: none"> <li>• Immediate Reporting Contact Sheet to be used</li> </ul> <p>External non-mandatory: N/A</p>
<b>Rescuer / respondent + safety checks</b>	As per Site Emergency Plan or Fire Department as part of Immediate Reporting
<b>Rescue + First Aid</b>	As per Site Emergency Plan or Fire Department as part of Immediate Reporting
<b>Clean up and Waste disposal</b>	Service Provider to dispose of diesel, oil, grease and advise on required clean-up.
<b>Reporting and re-preparedness</b>	<p>See protocol:</p> <ul style="list-style-type: none"> <li>• Incident Notification Protocol (GRP-HSEQ-3-02) and Environmental Incident Flowchart</li> </ul>

## Incident No 5

<b>Incident #5</b>	<p><b>Excessive air borne dust from stockpiled material.</b></p> <p>Actions Required:</p> <ul style="list-style-type: none"> <li>• Employees, Contractor/Visitor to notify site representative of issue immediately. (induction)</li> <li>• Daily monitoring to be undertaken to assess weather and site conditions</li> <li>• Contact all relevant people/department (refer to Immediate Reporting Contact Sheet)</li> <li>• Ensure all required PPE is used</li> <li>• Dust suppression activity to commence immediately on stockpiles</li> </ul>
<b>Alarm raising</b>	Any personnel involved or witnessing incident to report to immediate supervisor and PIRMP actions to be implemented.
<b>Emergency Controller</b>	<ul style="list-style-type: none"> <li>• Quarry Manager</li> <li>• Call service provider (Quarry Manager)</li> <li>• Periodic inspections and update reporting of site and bund (Quarry Manager)</li> </ul>
<b>Scale of incident</b>	Incident would be localised to the area surrounding stockpile area, with minimal external impact.
<b>Evacuate</b>	Evacuate area if dust is excessive
<b>Communications</b>	<p>Internal:</p> <ul style="list-style-type: none"> <li>• Quarry Manager</li> <li>• Rod Johnson &amp;/or Phil Paterson – Environmental Representative</li> </ul> <p>External mandatory:</p> <ul style="list-style-type: none"> <li>• Immediate Reporting Contact Sheet to be used</li> </ul> <p>External non-mandatory: N/A</p>
<b>Rescuer / respondent + safety checks</b>	As per Site Emergency Plan or Fire Department as part of Immediate Reporting
<b>Rescue + First Aid</b>	As per Site Emergency Plan or Fire Department as part of Immediate Reporting
<b>Clean up and Waste disposal</b>	Not required.
<b>Reporting and re-preparedness</b>	<p>See protocol:</p> <ul style="list-style-type: none"> <li>• Incident Notification Protocol (GRP-HSEQ-3-02) and Environmental Incident Flowchart</li> </ul>



## Incident No 6

<b>Incident #6</b>	<p><b>Failure of one or more sediment dams.</b></p> <p>Actions Required:</p> <ul style="list-style-type: none"> <li>• Contact all relevant people/department (refer to Immediate Reporting Contact Sheet) (site manager/environmental representative) via phone call or face to face</li> <li>• Take photographs of the area</li> <li>• Monitor any changes to bund water levels/flows/weather conditions etc</li> <li>• Contact local neighbours if going to be inundated by rise of water (site manager/environmental representative)</li> <li>• Site personnel to be tool boxed to inform of the environmental incident and area isolated if possible impact on site personnel</li> <li>• If required, place temporary silt fence/hay bales to capture any possible further sediment from tracking off site</li> <li>• Obtain water sample from site sediment dam if water is still flowing</li> <li>• If any release from site onto unsealed soil/surface water - Environmental Consultants to be engaged to investigate and remediate contamination if any</li> <li>• Contact local contractor to rebuild dams immediately</li> <li>• Enter incident into SIMS</li> </ul>
<b>Alarm raising</b>	Any personnel involved or witnessing incident to report to immediate supervisor and PIRMP actions to be implemented.
<b>Emergency Controller</b>	<ul style="list-style-type: none"> <li>• Quarry Manager</li> <li>• Call service provider (Quarry Manager)</li> <li>• Periodic inspections and update reporting of site and bund (Quarry Manager)</li> </ul>
<b>Scale of incident</b>	Catastrophic failure of one or more sediment dams are likely to result in off-site impacts to water courses which would predominantly reduce water quality over a short period of time. As such, impact to the environment/human health is not considered to be significant.
<b>Evacuate</b>	Only if flood potential exists. Quarry Manager and any advice provided by Fire Dept as part of attendance after immediate notification.
<b>Communications</b>	<p>Internal:</p> <ul style="list-style-type: none"> <li>• Quarry Manager</li> <li>• Rod Johnson &amp;/or Phil Paterson – Environmental Representative</li> </ul> <p>External mandatory:</p> <ul style="list-style-type: none"> <li>• Immediate Reporting Contact Sheet to be used</li> </ul>
<b>Rescuer / respondent +</b>	As per Site Emergency Plan or Fire Department as part of Immediate Reporting

<b>safety checks</b>	
<b>Rescue + First Aid</b>	As per Site Emergency Plan or Fire Department as part of Immediate Reporting
<b>Clean up and Waste disposal</b>	Consultants to be contacted to advise on required clean-up.
<b>Reporting and re-preparedness</b>	See protocol: <ul style="list-style-type: none"> <li>Incident Notification Protocol (GRP-HSEQ-3-02) and Environmental Incident Flowchart</li> </ul>

## Incident No 7

<b>Incident #7</b>	<p><b>Mobile plant, hydraulic hose or fuel tank failure.</b></p> <p>Actions Required:</p> <ul style="list-style-type: none"> <li>Contact all relevant people/department (refer to Immediate Reporting Contact Sheet)</li> <li>Ensure all required PPE is used</li> <li>Area to be restricted to Incident Response Personnel</li> <li>Ensure spill kit available for any release from mobile plant &amp; equipment</li> <li>If any release from mobile plant onto unsealed soil/surface water is investigated and remediated immediately</li> <li>Call service provider to inspect plant &amp; equipment for serviceability</li> </ul>
<b>Alarm raising</b>	Any personnel involved or witnessing incident to report to immediate supervisor and PIRMP actions to be implemented.
<b>Emergency Controller</b>	<ul style="list-style-type: none"> <li>Quarry Manager</li> <li>Call service provider (Quarry Manager)</li> <li>Spill Kit manager (Supervisor)</li> <li>Periodic inspections and update reporting of site and bund (Quarry Manager)</li> </ul>
<b>Scale of incident</b>	Incident would be localised to the area with no external impact.
<b>Evacuate</b>	Only if fire or explosion potential exists. Quarry Manager and any advice provided by Fire Dept as part of attendance after immediate notification.
<b>Communications</b>	<p>Internal:</p> <ul style="list-style-type: none"> <li>Quarry Manager</li> <li>Rod Johnson &amp;/or Phil Paterson – Environmental Representative</li> </ul>

	<p>External mandatory:</p> <ul style="list-style-type: none"> <li>• Immediate Reporting Contact Sheet to be used</li> </ul> <p>External non-mandatory: N/A</p>
<b>Rescuer / respondent + safety checks</b>	As per Site Emergency Plan or Fire Department as part of Immediate Reporting
<b>Rescue + First Aid</b>	As per Site Emergency Plan or Fire Department as part of Immediate Reporting
<b>Clean up and Waste disposal</b>	Service Provider to dispose of diesel and advise on required clean-up.
<b>Reporting and re-preparedness</b>	<p>See protocol:</p> <ul style="list-style-type: none"> <li>• Incident Notification Protocol (GRP-HSEQ-3-02) and Environmental Incident Flowchart</li> </ul>

## Incident No 8

<b>Incident #8</b>	<p><b>Mobile plant, hydraulic hose or fuel tank failure from contractors / visitors.</b></p> <p>Actions Required:</p> <ul style="list-style-type: none"> <li>• Contractor/Visitor to notify site representative of issue immediately. (induction)</li> <li>• Contact all relevant people/department (refer to Immediate Reporting Contact Sheet)</li> <li>• Ensure all required PPE is used</li> <li>• Area to be restricted to Incident Response Personnel</li> <li>• Ensure spill kit available for any release from mobile plant &amp; equipment</li> <li>• If any release from mobile plant onto unsealed soil/surface water is investigated and remediated immediately</li> <li>• Call service provider to inspect plant &amp; equipment for serviceability</li> </ul>
<b>Alarm raising</b>	Any personnel involved or witnessing incident to report to immediate supervisor and PIRMP actions to be implemented.
<b>Emergency Controller</b>	<ul style="list-style-type: none"> <li>• Quarry Manager</li> <li>• Call service provider (Quarry Manager)</li> <li>• Spill Kit manager (Supervisor)</li> <li>• Periodic inspections and update reporting of site and bund (Quarry Manager)</li> </ul>
<b>Scale of incident</b>	Incident would be localised to the area with no external impact.

<b>Evacuate</b>	Only if fire or explosion potential exists. Plant Manager and any advice provided by Fire Dept as part of attendance after immediate notification.
<b>Communications</b>	Internal: <ul style="list-style-type: none"> <li>• Quarry Manager</li> <li>• Rod Johnson &amp;/or Phil Paterson – Environmental Representative</li> </ul> External mandatory: <ul style="list-style-type: none"> <li>• Immediate Reporting Contact Sheet to be used</li> </ul> External non-mandatory: N/A
<b>Rescuer / respondent + safety checks</b>	As per Site Emergency Plan or Fire Department as part of Immediate Reporting
<b>Rescue + First Aid</b>	As per Site Emergency Plan or Fire Department as part of Immediate Reporting
<b>Clean up and Waste disposal</b>	Service Provider to dispose of contaminants.
<b>Reporting and re-preparedness</b>	See protocol: <ul style="list-style-type: none"> <li>• Incident Notification Protocol (GRP-HSEQ-3-02) and Environmental Incident Flowchart</li> </ul>

## Incident No 9

<b>Incident #9</b>	<b>Car Park/ fuel tank failure/gas tank failure.</b> Actions Required: <ul style="list-style-type: none"> <li>• Contractor/Visitor to notify site representative of issue immediately. (induction)</li> <li>• Contact all relevant people/department (refer to Immediate Reporting Contact Sheet)</li> <li>• Ensure all required PPE is used</li> <li>• Area to be restricted to Incident Response Personnel</li> <li>• Ensure spill kit available for petrol any release from mobile plant /evacuate area if gas tank rupture</li> <li>• If any release from mobile plant onto unsealed soil/surface water is investigated and remediated immediately</li> <li>• Call service provider to inspect plant &amp; equipment for serviceability</li> </ul>
<b>Alarm raising</b>	Any personnel involved or witnessing incident to report to immediate supervisor and PIRMP actions to be implemented.
<b>Emergency</b>	<ul style="list-style-type: none"> <li>• Quarry Manager</li> </ul>

<b>Controller</b>	<ul style="list-style-type: none"> <li>Spill Kit manager (Supervisor)</li> </ul>
<b>Scale of incident</b>	Incident would be localised to the area with no external impact.
<b>Evacuate</b>	Only if fire or explosion potential exists and in instance of gas tank rupture. Quarry Manager and any advice provided by Fire Dept as part of attendance after immediate notification.
<b>Communications</b>	<p>Internal:</p> <ul style="list-style-type: none"> <li>Quarry Manager</li> <li>Rod Johnson &amp;/or Phil Paterson – Environmental Representative</li> </ul> <p>External mandatory:</p> <ul style="list-style-type: none"> <li>Immediate Reporting Contact Sheet to be used</li> </ul> <p>External non-mandatory: N/A</p>
<b>Rescuer / respondent + safety checks</b>	As per Site Emergency Plan or Fire Department as part of Immediate Reporting
<b>Rescue + First Aid</b>	As per Site Emergency Plan or Fire Department as part of Immediate Reporting
<b>Clean up and Waste disposal</b>	Service Provider to dispose of contaminate
<b>Reporting and re-preparedness</b>	<p>See protocol:</p> <ul style="list-style-type: none"> <li>Incident Notification Protocol (GRP-HSEQ-3-02) and Environmental Incident Flowchart</li> </ul>

## Incident No 10

<b>Incident #10</b>	<p><b>Dust from traffic areas.</b></p> <p>Actions Required:</p> <ul style="list-style-type: none"> <li>Employees, Contractor/Visitor to notify site representative of issue immediately. (induction)</li> <li>Daily monitoring to be undertaken to capture whether and site conditions</li> <li>Contact all relevant people/department (refer to Immediate Reporting Contact Sheet)</li> <li>Ensure all required PPE is used</li> <li>Dust suppression activity to commence immediately on unsealed roads &amp; dusty areas of site</li> </ul>
<b>Alarm raising</b>	Any personnel involved or witnessing incident to report to immediate supervisor and PIRMP actions to be implemented.

<b>Emergency Controller</b>	<ul style="list-style-type: none"> <li>• Quarry Manager</li> <li>• Quarry Manager to instruct site personnel (Quarry Manager)</li> </ul>
<b>Scale of incident</b>	Incident would be localised to the area with minimal external impact..
<b>Evacuate</b>	Only if fire or potential exists. Quarry Manager and any advice provided by Fire Dept as part of attendance after immediate notification.
<b>Communications</b>	<p>Internal:</p> <ul style="list-style-type: none"> <li>• Quarry Manager</li> </ul> <p>External mandatory:</p> <ul style="list-style-type: none"> <li>• Immediate Reporting Contact Sheet to be used if required</li> </ul> <p>External non-mandatory: N/A</p>
<b>Rescuer / respondent + safety checks</b>	As per Site Emergency Plan or Fire Department as part of Immediate Reporting
<b>Rescue + First Aid</b>	As per Site Emergency Plan or Fire Department as part of Immediate Reporting
<b>Clean up and Waste disposal</b>	N/A
<b>Reporting and re-preparedness</b>	<p>See protocol:</p> <ul style="list-style-type: none"> <li>• Incident Notification Protocol (GRP-HSEQ-3-02) and Environmental Incident Flowchart</li> </ul>

## Incident No 11

<b>Incident #11</b>	<p><b>Dust emissions from Cement Silo failure/overflow Actions Required:</b></p> <ul style="list-style-type: none"> <li>• Employees, Contractor/Visitor to notify site representative of issue immediately. (induction)</li> <li>• Contact all relevant people/departments (refer to Immediate Reporting Contact Sheet)</li> <li>• Ensure all required PPE is used</li> <li>• Area to be restricted to Incident Response Personnel</li> <li>• Contact local neighbours if going to be impacted by dust emissions</li> </ul>
---------------------	---

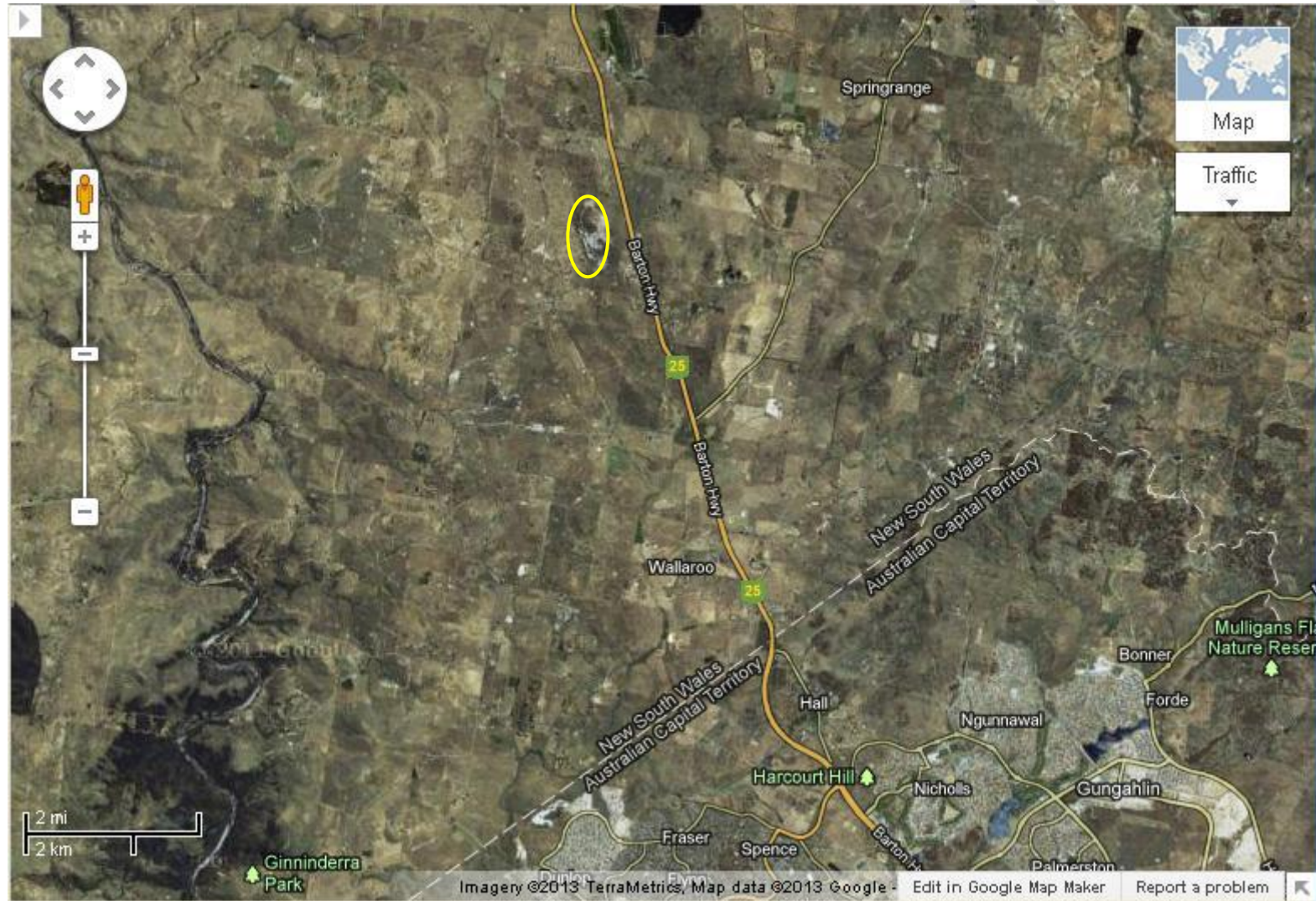
	<ul style="list-style-type: none"> <li>• If any release from site to surrounding environment - Environmental Consultants to be engaged to investigate and remediate contamination if any</li> <li>• Contact local contractor to rebuild silo/equipment immediately</li> <li>• Contact all relevant people/department (refer to Immediate Reporting Contact Sheet)</li> </ul>
<b>Alarm raising</b>	Any personnel involved or witnessing incident to report to immediate supervisor and PIRMP actions to be implemented.
<b>Emergency Controller</b>	<ul style="list-style-type: none"> <li>• Quarry Manager</li> <li>• Call service provider (Quarry Manager)</li> <li>• Periodic inspections and update reporting of site and bund (Quarry Manager)</li> </ul>
<b>Scale of incident</b>	Incident would be localised to the area surrounding the pugmill area, with minimal external impact.
<b>Evacuate</b>	Only if fire or explosion potential exists. Quarry Manager and any advice provided by Fire Dept as part of attendance after immediate notification.
<b>Communications</b>	<p>Internal:</p> <ul style="list-style-type: none"> <li>• Quarry Manager</li> <li>• Rod Johnson &amp;/or Phil Paterson – Environmental Representative</li> </ul> <p>External mandatory:</p> <ul style="list-style-type: none"> <li>• Immediate Reporting Contact Sheet to be used</li> </ul> <p>External non-mandatory: N/A</p>
<b>Rescuer / respondent + safety checks</b>	As per Site Emergency Plan or Fire Department as part of Immediate Reporting
<b>Rescue + First Aid</b>	As per Site Emergency Plan or Fire Department as part of Immediate Reporting
<b>Clean up and Waste disposal</b>	N/A
<b>Reporting and re-preparedness</b>	<p>See protocol:</p> <ul style="list-style-type: none"> <li>• Incident Notification Protocol (GRP-HSEQ-3-02) and Environmental Incident Flowchart</li> </ul>

PUBLIC DOCUMENT



### APPENDIX 3.

### HALL QUARRY LOCATION MAP





# APPENDIX 4.

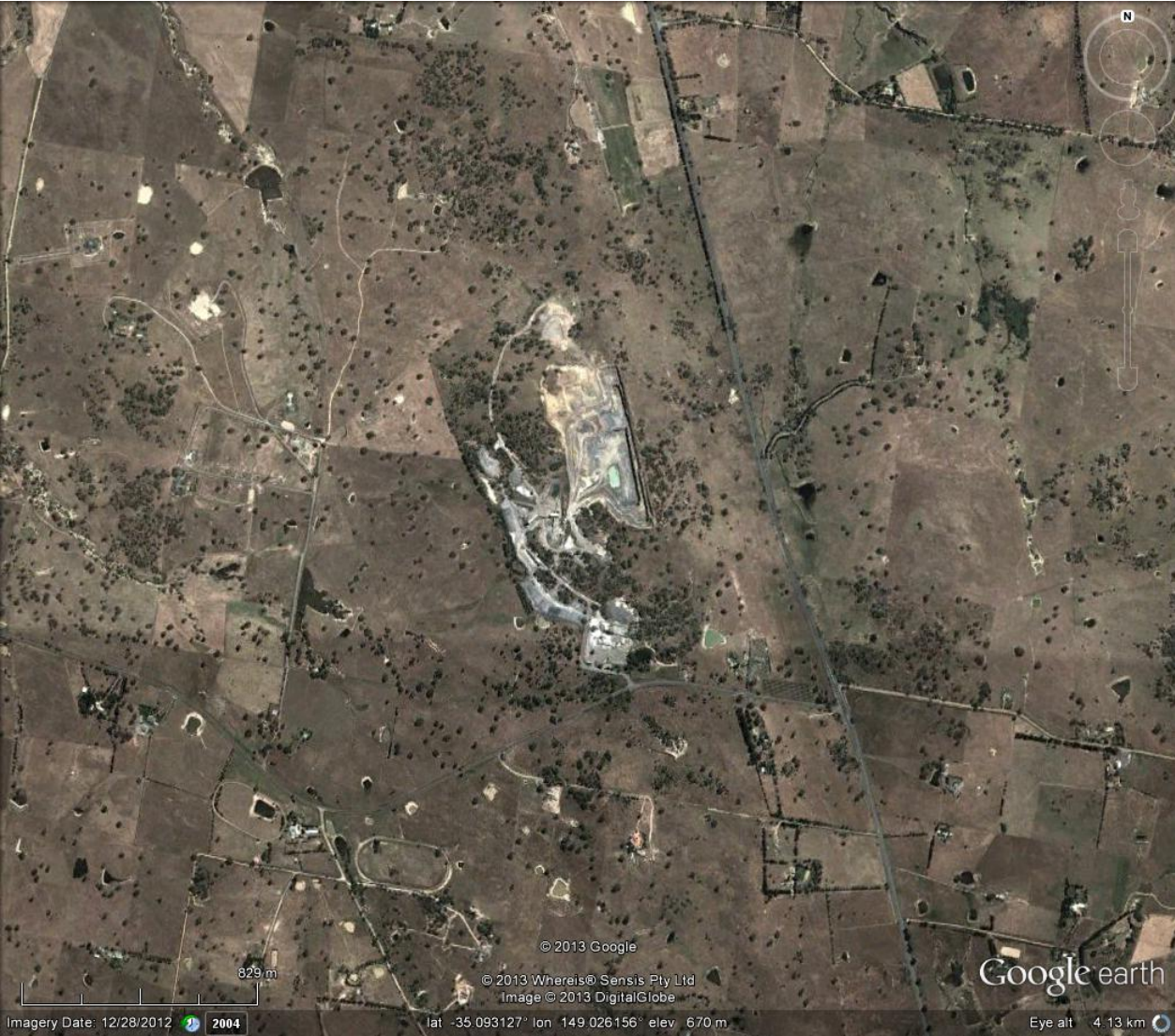
## HALL QUARRY REFERENCE MAP





APPENDIX 5.

HALL QUARRY – MAP OF AFFECTED AREAS



## APPENDIX 5.

### POLLUTION INCIDENT NOTIFICATION LOG

Person undertaking notification (Name/Function):		
Date and time when first become aware of the incident:		
Incident type:		
Comments:		

Initial immediate notification log				
Appropriate Regulatory Authority	Time of call	Respondent's name/function	Approximate call duration	Comments
EPA				
Public Health Unit				
Fire and Rescue NSW				
Local Council				
SafeWork NSW				
Other:				
Other:				
Summary of initial communication:				

Person undertaking notification (Name/Function):		
Date and time when additional information become available:		
Comments:		

<b>Immediate notification of further pertinent information (if applicable)</b>				
<b>Appropriate Regulatory Authority</b>	<b>Time of call</b>	<b>Respondent's name/function</b>	<b>Approximate call duration</b>	<b>Comments</b>
EPA				
Public Health Unit				
Fire and Rescue NSW				
Local Council				
SafeWork NSW				
Other:				
Other:				
Summary of additional communication				

## Hall Quarry PIRMP – Immediate Reporting Contact Sheet

Internal Reporting:			
Name	Role	Phone	Mobile
Nigel Simms	Site Manager		
Scott Dowling	Site Supervisor		
Andrew Crocker	Site Supervisor		
Michael Holz	Operations manager		
David Bolton	General Manager- Quarries		
Rachael Duff	HSE Advisor		
Phil Paterson	HSE Advisor (environmental Contact)		
Rod Johnson	Environment Manager		

External Reporting:	
Emergency Services/Government Authority	Emergency notification phone number
EPA	131 555
Police and Ambulance	000
Fire and Rescue NSW (FRNSW)	1300 729 579
Yass Valley Council	6226 1477
Public Health Unit (Greater Southern AHS) – Goulburn GS PHU	HealthLink (24 hr)- 0- 1800 063 635 Head Office- Goulburn- 0- 4824 1840
SafeWork Authority of NSW	131 050 Company ABN if asked: 51 000 187 002
Essential Energy (power line emergencies)	13 23 56