

**Boral presents this update on works and initiatives taking place at the former Berrima Colliery site at Medway for the information of its valued neighbours and stakeholders.**

## Connect with the Colliery team

Email: [feedback@boral.com.au](mailto:feedback@boral.com.au)  
Web: [www.boral.com.au/medway](http://www.boral.com.au/medway)  
Phone: 0401 894 097 (Stakeholder Relations)

## CWG meets in December

*We remain focused on closing the former Berrima (Medway) Colliery in a safe and sustainable way. Our engagement with the local community remains a crucial part of this process.*

Resources such as our dedicated **website** and **Closure Working Group (CWG)** meetings are key to ensuring the local community is informed about the steps being taken as part of the **closure process**.



The most recent meeting of the CWG was held on **11 December**. The meeting discussed recent activities at the site and the current proposed strategy to move toward the permanent closure of the mine.

As always, we'd like to thank all CWG members for volunteering their time. We appreciate their genuine feedback on our journey toward the closure.

During the meeting we were updated on **water quality discharge**, the performance of the **bulkheads**, the submitted **Stage 2 Mine Operations Plan** including our preferred options for long-term management of the **mineralised groundwater** and recent **Pit top remediation works**.

The next meeting of the CWG is scheduled for 26 March 2021.

## Bulkhead update

*Boral installed seven bulkheads within the workings in 2019 to verify the hydraulic conductivity of the strata within the mine, and to assist in determining final sealing options for closure.*

While the bulkheads continue to play an integral part in controlling waters, it is clear they alone will **not** prevent the release of mineralised groundwater.

Management of the mine groundwater will therefore continue to be required.

We continue to manage the mine water discharge through our **underground passive treatment system** (ie **aeration** and **limestone bed**), with additional **maintenance work planned** over the coming months to ensure discharge water quality is maintained.

## Water quality

*The quality of the water discharging from the mine continues to be at acceptable levels as defined in our Environmental Protection Licence (EPL 608).*

Treated discharge volumes into the **Wingecarribee River** have continued to be below the long-term average of **2.6 megalitres per day (ML/day)**. We will continue to monitor this volume to see if it is stabilising as a result of the bulkhead installation.

We continue to assess the water quality **upstream** and **downstream** of the mine discharge point and assess any changes and take action as we pursue the closure.

For example, the **pH of discharge waters**, while within the permitted range, has **trended down recently**. Lower pH can **increase dissolved metal concentrations**, which **is reflected in recent trends**. While these are still low with only a minor influence in the mixing zone of the river, we are **acting on this** by undertaking the **additional maintenance work** on the underground passive **water treatment system**.

The return of reasonable **rainfall** over the **past 12 months**, as well as **water transfers** by **Water NSW**, has meant the river has shown an increased **flow** which is assisting in overall stream health.

More information? [www.boral.com.au/medway](http://www.boral.com.au/medway).

Like us on **Facebook** – **@Boral Australia**.



## Key steps to closure

*At the CWG meeting, we once again outlined the steps required to enable closure of the mine. This included confirmation that our Stage 2 Closure Mining Operations Plan (MOP) was submitted to the NSW Resources Regulator in November.*

The MOP has included our preferred option to sustainably manage the **mine water quality** post-closure and other commitments regarding **surface rehabilitation works**.

Once approved, it is envisaged these activities may take a **couple of years** to complete, with progressive relinquishment of the **mining lease** as various domains are adequately completed. While we await approval the Stage 1 MOP remains current.

## Recent site remediation works

*Undertaken in late September, we safely removed the former coal loading and associated infrastructure.*

This involved the use of specialist demolition contractors. These works were performed as approved under the Stage 1 MOP.



## Long-term water management

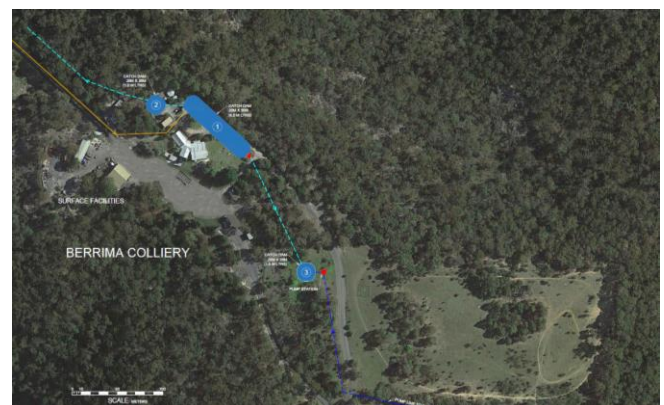
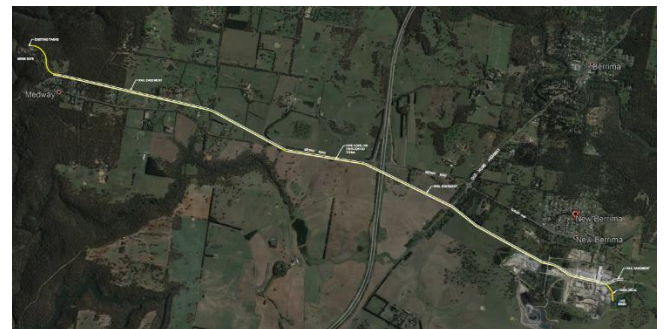
*To enable physical enclosure of the mine, and a safer and more viable option for continued treatment of underground waters, Boral proposes to install a passive water treatment system at the Colliery pit top.*

The system is being designed upon our **research** and **learnings** over the last couple of years from our **underground passive water treatment system**.

The pit top system will consist of a number of **dams** that will rely on a small amount of **aeration**, **limestone bedding** and **gravity**, enabling the naturally occurring minerals such as **iron** and **manganese** to precipitate out.

The waters would then either be released back into the **Wingecarribee** near the **mine access bridge** as an EPA licenced discharge point, used for productive **irrigation** purposes, or in future be **piped** via the Boral rail easement from the Colliery to the **Cement Works** at New Berrima for **operations**.

The pit top treatment system and any pipeline would be subject to **regulatory approvals** which includes the need for **local consultation**.



More information? [www.boral.com.au/medway](http://www.boral.com.au/medway).

Like us on **Facebook** – **@Boral Australia**.

