



Dunmore Lakes Sand Project

Environmental Monitoring Report

March 2019

Date Published: May 2019



Dunmore Lakes Sand Project Environmental Monitoring Report

This monitoring report is to satisfy the requirements of Section 66 (6) of the Protection of the Environment and Operations Act 1997, to make available, within 14 days of request, any monitoring data that relates to pollution under an Environment Protection Licence.

The monitoring of pollutants provided in this report is undertaken as per the requirements of Environment Protection Licence 11147 (EPL 11147 – Boral Dunmore Lakes Sand Project)

This report provides environmental monitoring data for Dunmore Lakes Sand Project for the period of Jan 2017 to May 2019.

Dunmore Lakes Sand Project Information	
Premise Details	Boral – Dunmore Lakes Sand Project
Address	Princes Highway, Dunmore NSW, 2529
Licensee	Boral Resources (NSW) PTY LTD
EPL N°	11147
EPL Location	http://www.epa.nsw.gov.au/prpoeoapp/ViewPOEOLicence.aspx?DOCID=33270&SYSUID=1&LICID=11147

Monitoring data in this report relates to the monitoring undertaken for the following environmental pollutants:

- Deposited Dust
- Water Quality

Dunmore Lakes Sand Project Environmental Monitoring Report

Air Quality

Air Quality Monitoring is conducted as per condition M2.2 of EPL 11147. The air quality results for the reporting period are tabled below.

Deposited Dust

Deposited Dust (g/m²/month) results for the reporting period.

Sample Period: March 2019
Date received: 1/05/2019
Licensee: Dunmore Lakes Sand Project
Licensee Address: Princes Hwy, Dunmore NSW 2529
EPL No: 11147

Qualifications related to Dust

Air Emissions Monitoring - Dust Deposition Gauge

Results

Location	Monitoring Frequency	Pollutant	Measurement	Unit
Monitoring Point 2 (DD2)	Monthly	Ash	1.76	g/m ² /month
		Combustible Solids	2.09	g/m ² /month
		Insoluble Solids	3.85	g/m ² /month
Monitoring Point 4 (DD5)	Monthly	Ash	1.69	g/m ² /month
		Combustible Solids	2.29	g/m ² /month
		Insoluble Solids	3.98	g/m ² /month
Monitoring Point 7 (DD10)	Monthly	Ash	1.70	g/m ² /month
		Combustible Solids	1.80	g/m ² /month
		Insoluble Solids	3.50	g/m ² /month
Monitoring Point 8 (DD6)	Monthly	Ash	1.72	g/m ² /month
		Combustible Solids	1.89	g/m ² /month
		Insoluble Solids	3.61	g/m ² /month

Dunmore Lakes Sand Project Environmental Monitoring Report
Historical Deposited Dust Data

Location	Month	Pollutant	Measurement	Unit	Comments	
Monitoring Point 2 (DD2)	February 2019	Ash	4.40	g/m ² /month	The deposited dust data for the reporting period indicates that the deposited dust results range from 8.62 g/m ² /month of insoluble solids at Monitoring Point 2, to 4.02 g/m ² /month of insoluble solids at Monitoring Point 7. Ash is considered a better indicator for the project's contribution to local dust levels.	
		Combustible Solids	4.22	g/m ² /month		
		Insoluble Solids	8.62	g/m ² /month		
Monitoring Point 4 (DD5)		Ash	3.13	g/m ² /month		
		Combustible Solids	1.58	g/m ² /month		
		Insoluble Solids	4.71	g/m ² /month		
Monitoring Point 7 (DD10)		Ash	2.36	g/m ² /month		
		Combustible Solids	1.66	g/m ² /month		
		Insoluble Solids	4.02	g/m ² /month		
Monitoring Point 8 (DD6)		Ash	2.88	g/m ² /month		
		Combustible Solids	1.55	g/m ² /month		
		Insoluble Solids	4.43	g/m ² /month		
Monitoring Point 2 (DD2)	January 2019	Ash	2.82	g/m ² /month	The deposited dust data for the reporting period indicates that the deposited dust results range from 4.05 g/m ² /month of insoluble solids at Monitoring Point 8, to 2.24 g/m ² /month of insoluble solids at Monitoring Point 4. Ash is considered a better indicator for the project's contribution to local dust levels.	
		Combustible Solids	1.11	g/m ² /month		
		Insoluble Solids	3.93	g/m ² /month		
Monitoring Point 4 (DD5)		Ash	1.96	g/m ² /month		
		Combustible Solids	0.28	g/m ² /month		
		Insoluble Solids	2.24	g/m ² /month		
Monitoring Point 7 (DD10)		Ash	2.34	g/m ² /month		
		Combustible Solids	0.37	g/m ² /month		
		Insoluble Solids	2.71	g/m ² /month		
Monitoring Point 8 (DD6)		Ash	2.73	g/m ² /month		
		Combustible Solids	1.32	g/m ² /month		
		Insoluble Solids	4.05	g/m ² /month		
Monitoring Point 2 (DD2)	December 2018	Ash	2.14	g/m ² /month	The deposited dust data for the reporting period indicates that the deposited dust results range from 4.38 g/m ² /month of insoluble solids at Monitoring Point 4, to 0.71 g/m ² /month of insoluble solids at Monitoring Point 7. Ash is considered a better indicator for the project's contribution to local dust levels.	
		Combustible Solids	2.16	g/m ² /month		
		Insoluble Solids	4.30	g/m ² /month		
Monitoring Point 4 (DD5)		Ash	2.40	g/m ² /month		
		Combustible Solids	1.98	g/m ² /month		
		Insoluble Solids	4.38	g/m ² /month		
Monitoring Point 7 (DD10)		Ash	0.45	g/m ² /month		
		Combustible Solids	0.26	g/m ² /month		
		Insoluble Solids	0.71	g/m ² /month		
Monitoring Point 8 (DD6)		Ash	1.50	g/m ² /month		
		Combustible Solids	0.87	g/m ² /month		
		Insoluble Solids	2.37	g/m ² /month		
Monitoring Point 2 (DD2)	November 2018	Ash	2.24	g/m ² /month	The deposited dust data for the reporting period indicates that the deposited dust results range from 4.47 g/m ² /month of insoluble solids at Monitoring Point 7, to 3.20 g/m ² /month of insoluble solids at Monitoring Point 4. Ash is considered a better indicator for the project's contribution to local dust levels.	
		Combustible Solids	1.05	g/m ² /month		
		Insoluble Solids	3.29	g/m ² /month		
Monitoring Point 4 (DD5)		Ash	2.11	g/m ² /month		
		Combustible Solids	1.09	g/m ² /month		
		Insoluble Solids	3.20	g/m ² /month		
Monitoring Point 7 (DD10)		Ash	2.43	g/m ² /month		
		Combustible Solids	2.04	g/m ² /month		
		Insoluble Solids	4.47	g/m ² /month		
Monitoring Point 8 (DD6)		Ash	2.39	g/m ² /month		
		Combustible Solids	1.32	g/m ² /month		
		Insoluble Solids	3.71	g/m ² /month		
Monitoring Point 2 (DD2)	October 2018	Ash	2.39	g/m ² /month	The deposited dust data for the reporting period indicates that the deposited dust results range from 3.03 g/m ² /month of insoluble solids at Monitoring Point 2, to 1.92 g/m ² /month of	
		Combustible Solids	0.64	g/m ² /month		
		Insoluble Solids	3.03	g/m ² /month		
Monitoring Point 4 (DD5)		Ash	1.24	g/m ² /month		
		Combustible Solids	0.68	g/m ² /month		
		Insoluble Solids	1.92	g/m ² /month		
Monitoring			Ash	1.05		g/m ² /month

Dunmore Lakes Sand Project Environmental Monitoring Report

Point 7 (DD10)		Combustible Solids Insoluble Solids	1.52 2.57	g/m ² /month g/m ² /month	insoluble solids at Monitoring Point 4. Ash is considered a better indicator for the project's contribution to local dust levels.		
Monitoring Point 8 (DD6)		Ash Combustible Solids Insoluble Solids	1.41 0.68 2.09	g/m ² /month g/m ² /month g/m ² /month			
Monitoring Point 2 (DD2)	September 2018	Ash Combustible Solids Insoluble Solids	1.69 1.11 2.80	g/m ² /month g/m ² /month g/m ² /month	The deposited dust data for the reporting period indicates that the deposited dust results range from 4.43 g/m ² /month of insoluble solids at Monitoring Point 8, to 2.80 g/m ² /month of insoluble solids at Monitoring Point 2. Ash is considered a better indicator for the project's contribution to local dust levels.		
Monitoring Point 4 (DD5)		Ash Combustible Solids Insoluble Solids	2.09 1.61 3.70	g/m ² /month g/m ² /month g/m ² /month			
Monitoring Point 7 (DD10)		Ash Combustible Solids Insoluble Solids	1.73 1.14 2.87	g/m ² /month g/m ² /month g/m ² /month			
Monitoring Point 8 (DD6)		Ash Combustible Solids Insoluble Solids	2.58 1.75 4.33	g/m ² /month g/m ² /month g/m ² /month			
Monitoring Point 2 (DD2)		August 2018	Ash Combustible Solids Insoluble Solids	2.33 1.90 4.23		g/m ² /month g/m ² /month g/m ² /month	The deposited dust data for the reporting period indicates that the deposited dust results range from 4.95 g/m ² /month of insoluble solids at Monitoring Point 7, to 3.72 g/m ² /month of insoluble solids at Monitoring Point 8. Ash is considered a better indicator for the project's contribution to local dust levels.
Monitoring Point 4 (DD5)			Ash Combustible Solids Insoluble Solids	3.07 1.85 4.92		g/m ² /month g/m ² /month g/m ² /month	
Monitoring Point 7 (DD10)	Ash Combustible Solids Insoluble Solids		2.32 2.63 4.95	g/m ² /month g/m ² /month g/m ² /month			
Monitoring Point 8 (DD6)	Ash Combustible Solids Insoluble Solids		2.27 1.45 3.72	g/m ² /month g/m ² /month g/m ² /month			
Monitoring Point 2 (DD2)	July 2018	Ash Combustible Solids Insoluble Solids	1.53 0.14 1.67	g/m ² /month g/m ² /month g/m ² /month	The deposited dust data for the reporting period indicates that the deposited dust results range from 2.50 g/m ² /month of insoluble solids at Monitoring Point 4, to 1.67 g/m ² /month of insoluble solids at Monitoring Point 2. Ash is considered a better indicator for the project's contribution to local dust levels.		
Monitoring Point 4 (DD5)		Ash Combustible Solids Insoluble Solids	2.23 0.27 2.50	g/m ² /month g/m ² /month g/m ² /month			
Monitoring Point 7 (DD10)		Ash Combustible Solids Insoluble Solids	2.06 0.40 2.46	g/m ² /month g/m ² /month g/m ² /month			
Monitoring Point 8 (DD6)		Ash Combustible Solids Insoluble Solids	1.87 0.26 2.13	g/m ² /month g/m ² /month g/m ² /month			
Monitoring Point 2 (DD2)	June 2018	Ash Combustible Solids Insoluble Solids	1.17 0.43 1.60	g/m ² /month g/m ² /month g/m ² /month	The deposited dust data for the reporting period indicates that the deposited dust results range from 2.78 g/m ² /month of insoluble solids at Monitoring Point 7, to 1.60 g/m ² /month of insoluble solids at Monitoring Point 2. Ash is considered a better indicator for the project's contribution to local dust levels.		
Monitoring Point 4 (DD5)		Ash Combustible Solids Insoluble Solids	1.53 0.19 1.72	g/m ² /month g/m ² /month g/m ² /month			
Monitoring Point 7 (DD10)		Ash Combustible Solids Insoluble Solids	1.63 1.15 2.78	g/m ² /month g/m ² /month g/m ² /month			
Monitoring Point 8 (DD6)		Ash Combustible Solids Insoluble Solids	1.57 0.23 1.80	g/m ² /month g/m ² /month g/m ² /month			
Monitoring Point 2 (DD2)	May 2018	Ash Combustible Solids Insoluble Solids	1.48 0.51 1.98	g/m ² /month g/m ² /month g/m ² /month	The deposited dust data for the reporting period indicates that the deposited dust results range		
Monitoring		Ash	2.14	g/m ² /month			

Dunmore Lakes Sand Project Environmental Monitoring Report

Point 4 (DD5)		Combustible Solids Insoluble Solids	0.83 2.97	g/m ² /month g/m ² /month	from 1.72 g/m ² /month of insoluble solids at Monitoring Point 7, to 2.97 g/m ² /month of insoluble solids at Monitoring Point 4. Ash is considered a better indicator for the project's contribution to local dust levels.
Monitoring Point 7 (DD10)		Ash Combustible Solids Insoluble Solids	0.85 0.87 1.72	g/m ² /month g/m ² /month g/m ² /month	
Monitoring Point 8 (DD6)		Ash Combustible Solids Insoluble Solids	1.73 1.07 2.80	g/m ² /month g/m ² /month g/m ² /month	
Monitoring Point 2 (DD2)		Ash Combustible Solids Insoluble Solids	2.40 0.31 2.70	g/m ² /month g/m ² /month g/m ² /month	
Monitoring Point 4 (DD5)	April 2018	Ash Combustible Solids Insoluble Solids	2.63 0.05 2.69	g/m ² /month g/m ² /month g/m ² /month	The deposited dust data for the reporting period indicates that the deposited dust results range from 2.60 g/m ² /month of insoluble solids at Monitoring Point 8, to 2.74 g/m ² /month of insoluble solids at Monitoring Point 7. Ash is considered a better indicator for the project's contribution to local dust levels.
Monitoring Point 7 (DD10)		Ash Combustible Solids Insoluble Solids	2.39 0.35 2.74	g/m ² /month g/m ² /month g/m ² /month	
Monitoring Point 8 (DD6)		Ash Combustible Solids Insoluble Solids	2.39 0.21 2.60	g/m ² /month g/m ² /month g/m ² /month	
Monitoring Point 2 (DD2)		Ash Combustible Solids Insoluble Solids	1.74 0.98 2.72	g/m ² /month g/m ² /month g/m ² /month	
Monitoring Point 4 (DD5)	March 2018	Ash Combustible Solids Insoluble Solids	1.76 0.58 2.33	g/m ² /month g/m ² /month g/m ² /month	The deposited dust data for the reporting period indicates that the deposited dust results range from 4.21 g/m ² /month of insoluble solids at Monitoring Point 7, to 2.33 g/m ² /month of insoluble solids at Monitoring Point 4. Ash is considered a better indicator for the project's contribution to local dust levels
Monitoring Point 7 (DD10)		Ash Combustible Solids Insoluble Solids	1.91 2.29 4.21	g/m ² /month g/m ² /month g/m ² /month	
Monitoring Point 8 (DD6)		Ash Combustible Solids Insoluble Solids	2.16 0.73 2.90	g/m ² /month g/m ² /month g/m ² /month	
Monitoring Point 2 (DD2)		Ash Combustible Solids Insoluble Solids	1.62 1.21 2.83	g/m ² /month g/m ² /month g/m ² /month	
Monitoring Point 4 (DD5)	February 2018	Ash Combustible Solids Insoluble Solids	1.13 0.25 1.38	g/m ² /month g/m ² /month g/m ² /month	The deposited dust data for the reporting period indicates that the deposited dust results range from 1.38 g/m ² /month of insoluble solids at Monitoring Point 5, to 2.83 g/m ² /month of insoluble solids at Monitoring Point 2. Ash is considered a better indicator for the project's contribution to local dust levels.
Monitoring Point 7 (DD10)		Ash Combustible Solids Insoluble Solids	1.35 0.54 1.89	g/m ² /month g/m ² /month g/m ² /month	
Monitoring Point 8 (DD6)		Ash Combustible Solids Insoluble Solids	1.66 0.59 2.25	g/m ² /month g/m ² /month g/m ² /month	
Monitoring Point 2 (DD2)		Ash Combustible Solids Insoluble Solids	1.84 0.39 2.22	g/m ² /month g/m ² /month g/m ² /month	
Monitoring Point 4 (DD5)	January 2018	Ash Combustible Solids Insoluble Solids	2.48 0.22 2.70	g/m ² /month g/m ² /month g/m ² /month	The deposited dust data for the reporting period indicates that the deposited dust results range from 1.47 g/m ² /month of insoluble solids at Monitoring Point 7, to 2.70 g/m ² /month of insoluble solids at Monitoring Point 4. Ash is considered a better indicator for the project's contribution to local dust levels.
Monitoring Point 7 (DD10)		Ash Combustible Solids Insoluble Solids	1.23 0.25 1.47	g/m ² /month g/m ² /month g/m ² /month	
Monitoring Point 8 (DD6)		Ash Combustible Solids Insoluble Solids	1.70 0.75 2.45	g/m ² /month g/m ² /month g/m ² /month	
Monitoring Point 2 (DD2)		Ash	1.75	g/m ² /month	

Dunmore Lakes Sand Project Environmental Monitoring Report

Point 2 (DD2)		Combustible Solids	0.49	g/m ² /month	reporting period indicates that the deposited dust results range from 2.24 g/m ² /month of insoluble solids at Monitoring Point 2, to 3.43 g/m ² /month of insoluble solids at Monitoring Point 8. Ash is considered a better indicator for the project's contribution to local dust levels.
Monitoring Point 4 (DD5)		Ash	1.73	g/m ² /month	
Monitoring Point 7 (DD10)		Combustible Solids	0.79	g/m ² /month	
		Insoluble Solids	2.52	g/m ² /month	
Monitoring Point 8 (DD6)	Ash	1.66	g/m ² /month		
Monitoring Point 2 (DD2)	Combustible Solids	0.82	g/m ² /month		
	Insoluble Solids	2.47	g/m ² /month		
Monitoring Point 4 (DD5)	Ash	1.86	g/m ² /month		The deposited dust data for the reporting period indicates that the deposited dust results range from 0.92 g/m ² /month of insoluble solids at Monitoring Point 2, to 1.89 g/m ² /month of insoluble solids at Monitoring Point 8. Ash is considered a better indicator for the project's contribution to local dust levels.
Monitoring Point 7 (DD10)	Combustible Solids	1.57	g/m ² /month		
	Insoluble Solids	3.43	g/m ² /month		
Monitoring Point 8 (DD6)	Ash	0.70	g/m ² /month		
Monitoring Point 2 (DD2)	Combustible Solids	0.22	g/m ² /month		
	Insoluble Solids	0.92	g/m ² /month		
Monitoring Point 4 (DD5)	Ash	1.20	g/m ² /month		The deposited dust data for the reporting period indicates that the deposited dust results range from 2.06 g/m ² /month of insoluble solids at Monitoring Point 2, to 6.89 g/m ² /month of insoluble solids at Monitoring Point 8. Ash is considered a better indicator for the project's contribution to local dust levels.
Monitoring Point 7 (DD10)	Combustible Solids	0.49	g/m ² /month		
	Insoluble Solids	1.69	g/m ² /month		
Monitoring Point 8 (DD6)	Ash	1.19	g/m ² /month		
Monitoring Point 2	Combustible Solids	0.58	g/m ² /month		
	Insoluble Solids	1.77	g/m ² /month		
Monitoring Point 4	Ash	1.38	g/m ² /month		The deposited dust data for the reporting period indicates that the deposited dust results range from 2.15 g/m ² /month of insoluble solids at Monitoring Point 4, to 6.89 g/m ² /month of insoluble solids at Monitoring Point 7. Ash is considered a better indicator for the project's contribution to local dust levels.
Monitoring Point 7	Combustible Solids	0.51	g/m ² /month		
	Insoluble Solids	1.89	g/m ² /month		
Monitoring Point 8	Ash	2.15	g/m ² /month		
Monitoring Point 2	Combustible Solids	1.57	g/m ² /month		
	Insoluble Solids	3.72	g/m ² /month		
Monitoring Point 4	Ash	1.85	g/m ² /month		The deposited dust data for the reporting period indicates that the deposited dust results range from 2.06 g/m ² /month of insoluble solids at Monitoring Point 4, to 6.89 g/m ² /month of insoluble solids at Monitoring Point 7. Ash is considered a better indicator for the project's contribution to local dust levels.
Monitoring Point 7	Combustible Solids	1.82	g/m ² /month		
	Insoluble Solids	3.67	g/m ² /month		
Monitoring Point 8	Ash	2.16	g/m ² /month		
Monitoring Point 2	Combustible Solids	1.33	g/m ² /month		
	Insoluble Solids	3.49	g/m ² /month		
Monitoring Point 4	Ash	2.53	g/m ² /month		The deposited dust data for the reporting period indicates that the deposited dust results range from 2.33 g/m ² /month of insoluble solids at Monitoring Point 4, to 6.89 g/m ² /month of insoluble solids at Monitoring Point 7. Ash is considered a better indicator for the project's contribution to local dust levels.
Monitoring Point 7	Combustible Solids	1.66	g/m ² /month		
	Insoluble Solids	4.19	g/m ² /month		
Monitoring Point 8	Ash	2.33	g/m ² /month		
Monitoring Point 2	Combustible Solids	1.86	g/m ² /month		
	Insoluble Solids	4.19	g/m ² /month		
Monitoring Point 4	Ash	1.78	g/m ² /month		The deposited dust data for the reporting period indicates that the deposited dust results range from 2.06 g/m ² /month of insoluble solids at Monitoring Point 4, to 6.89 g/m ² /month of insoluble solids at Monitoring Point 7. Ash is considered a better indicator for the project's contribution to local dust levels.
Monitoring Point 7	Combustible Solids	0.27	g/m ² /month		
	Insoluble Solids	2.06	g/m ² /month		
Monitoring Point 8	Ash	4.04	g/m ² /month		
Monitoring Point 2	Combustible Solids	2.86	g/m ² /month		
	Insoluble Solids	6.89	g/m ² /month		
Monitoring Point 4	Ash	2.56	g/m ² /month		The deposited dust data for the reporting period indicates that the deposited dust results range from 0.89 g/m ² /month of insoluble solids at Monitoring Point 8, to 2.84 g/m ² /month of insoluble solids at Monitoring Point 7. Ash is considered a better indicator for the project's contribution to local dust levels.
Monitoring Point 7	Combustible Solids	2.27	g/m ² /month		
	Insoluble Solids	4.83	g/m ² /month		
Monitoring Point 8	Ash	0.95	g/m ² /month		
Monitoring Point 2	Combustible Solids	0.47	g/m ² /month		
	Insoluble Solids	1.43	g/m ² /month		
Monitoring Point 4	Ash	1.66	g/m ² /month		The deposited dust data for the reporting period indicates that the deposited dust results range from 0.89 g/m ² /month of insoluble solids at Monitoring Point 8, to 2.84 g/m ² /month of insoluble solids at Monitoring Point 7. Ash is considered a better indicator for the project's contribution to local dust levels.
Monitoring Point 7	Combustible Solids	0.51	g/m ² /month		
	Insoluble Solids	2.18	g/m ² /month		
Monitoring Point 8	Ash	1.58	g/m ² /month		
Monitoring Point 2	Combustible Solids	1.26	g/m ² /month		
	Insoluble Solids	2.84	g/m ² /month		
Monitoring Point 4	Ash	0.6	g/m ² /month		
Monitoring Point 8	Combustible Solids	0.29	g/m ² /month		

Dunmore Lakes Sand Project Environmental Monitoring Report

		Insoluble Solids	0.89	g/m ² /month	
Monitoring Point 2	July 2017	Ash	1.65	g/m ² /month	The deposited dust data for the reporting period indicates that the deposited dust results range from 1.76 g/m ² /month of insoluble solids at Monitoring Point 7, to 2.54 g/m ² /month of insoluble solids at Monitoring Point 8. Ash is considered a better indicator for the project's contribution to local dust levels.
		Combustible Solids	0.1	g/m ² /month	
		Insoluble Solids	1.80	g/m ² /month	
Monitoring Point 4		Ash	1.44	g/m ² /month	
		Combustible Solids	0.44	g/m ² /month	
		Insoluble Solids	1.88	g/m ² /month	
Monitoring Point 7		Ash	1.53	g/m ² /month	
		Combustible Solids	0.23	g/m ² /month	
		Insoluble Solids	1.76	g/m ² /month	
Monitoring Point 8		Ash	2.4	g/m ² /month	
		Combustible Solids	0.14	g/m ² /month	
		Insoluble Solids	2.54	g/m ² /month	
Monitoring Point 2	June 2017	Ash	1.32	g/m ² /month	The deposited dust data for the reporting period indicates that the deposited dust results range from 1.67 g/m ² /month of insoluble solids at Monitoring Point 2, to 3.74 g/m ² /month of insoluble solids at Monitoring Point 7. Ash is considered a better indicator for the project's contribution to local dust levels.
		Combustible Solids	0.35	g/m ² /month	
		Insoluble Solids	1.67	g/m ² /month	
Monitoring Point 4		Ash	1.25	g/m ² /month	
		Combustible Solids	0.45	g/m ² /month	
		Insoluble Solids	1.7	g/m ² /month	
Monitoring Point 7		Ash	2.1	g/m ² /month	
		Combustible Solids	1.64	g/m ² /month	
		Insoluble Solids	3.74	g/m ² /month	
Monitoring Point 8		Ash	1.36	g/m ² /month	
		Combustible Solids	0.6	g/m ² /month	
		Insoluble Solids	1.97	g/m ² /month	
Monitoring Point 2	May 2017	Ash	1.18	g/m ² /month	The deposited dust data for the reporting period indicates that the deposited dust results range from 1.74 g/m ² /month of insoluble solids at Monitoring Point 7, to 4.24 g/m ² /month of insoluble solids at Monitoring Point 4. Ash is considered a better indicator for the project's contribution to local dust levels.
		Combustible Solids	0.67	g/m ² /month	
		Insoluble Solids	1.85	g/m ² /month	
Monitoring Point 4		Ash	2.20	g/m ² /month	
		Combustible Solids	2.04	g/m ² /month	
		Insoluble Solids	4.24	g/m ² /month	
Monitoring Point 7		Ash	1.16	g/m ² /month	
		Combustible Solids	0.58	g/m ² /month	
		Insoluble Solids	1.74	g/m ² /month	
Monitoring Point 8		Ash	1.6	g/m ² /month	
		Combustible Solids	0.98	g/m ² /month	
		Insoluble Solids	2.58	g/m ² /month	
Monitoring Point 2	April 2017	Ash	0.79	g/m ² /month	The deposited dust data for the reporting period indicates that the deposited dust results range from 0.62 g/m ² /month of insoluble solids at Monitoring Point 8, to 1.58 g/m ² /month of insoluble solids at Monitoring Point 8. Ash is considered a better indicator for the project's contribution to local dust levels.
		Combustible Solids	0.8	g/m ² /month	
		Insoluble Solids	1.58	g/m ² /month	
Monitoring Point 4		Ash	0.52	g/m ² /month	
		Combustible Solids	0.11	g/m ² /month	
		Insoluble Solids	0.63	g/m ² /month	
Monitoring Point 7		Ash	0.66	g/m ² /month	
		Combustible Solids	0.15	g/m ² /month	
		Insoluble Solids	0.82	g/m ² /month	
Monitoring Point 8		Ash	0.17	g/m ² /month	
		Combustible Solids	0.45	g/m ² /month	
		Insoluble Solids	0.62	g/m ² /month	
Monitoring Point 2	March 2017	Ash	0.79	g/m ² /month	The deposited dust data for the reporting period indicates that the deposited dust results range from 0.62 g/m ² /month of insoluble solids at Monitoring Point 8, to 1.58 g/m ² /month of insoluble solids at Monitoring Point 2. Ash is considered a better indicator for the project's contribution to local dust levels.
		Combustible Solids	0.80	g/m ² /month	
		Insoluble Solids	1.58	g/m ² /month	
Monitoring Point 4		Ash	0.52	g/m ² /month	
		Combustible Solids	0.11	g/m ² /month	
		Insoluble Solids	0.63	g/m ² /month	
Monitoring Point 7		Ash	0.81	g/m ² /month	
		Combustible Solids	1.01	g/m ² /month	
		Insoluble Solids	0.82	g/m ² /month	

Dunmore Lakes Sand Project Environmental Monitoring Report

Monitoring Point 8		Ash Combustible Solids Insoluble Solids	0.17 0.45 0.62	g/m ² /month g/m ² /month g/m ² /month	dust levels.
Monitoring Point 2	February 2017	Ash Combustible Solids Insoluble Solids	1.08 0.26 1.34	g/m ² /month g/m ² /month g/m ² /month	The deposited dust data for the reporting period indicates that the deposited dust results range from 0.31 g/m ² /month of insoluble solids at Monitoring Point 7, to 1.71 g/m ² /month of insoluble solids at Monitoring Point 3. Ash is considered a better indicator for the project's contribution to local dust levels.
Monitoring Point 4		Ash Combustible Solids Insoluble Solids	1.54 0.17 1.71	g/m ² /month g/m ² /month g/m ² /month	
Monitoring Point 7		Ash Combustible Solids Insoluble Solids	0.10 0.21 0.31	g/m ² /month g/m ² /month g/m ² /month	
Monitoring Point 8		Ash Combustible Solids Insoluble Solids	0.68 0.05 0.72	g/m ² /month g/m ² /month g/m ² /month	
Monitoring Point 2		Ash Combustible Solids Insoluble Solids	2.01 0.36 2.37	g/m ² /month g/m ² /month g/m ² /month	
Monitoring Point 4	January 2017	Ash Combustible Solids Insoluble Solids	2.20 1.08 3.28	g/m ² /month g/m ² /month g/m ² /month	The deposited dust data for the reporting period indicates that the deposited dust results range from 2.22 g/m ² /month of insoluble solids at Monitoring Point 7, to 6.31 g/m ² /month of insoluble solids at Monitoring Point 8. Ash is considered a better indicator for the project's contribution to local dust levels. The ash level for monitoring point 8 was 3.39 g/m ² /month.
Monitoring Point 7		Ash Combustible Solids Insoluble Solids	1.61 0.60 2.22	g/m ² /month g/m ² /month g/m ² /month	
Monitoring Point 8		Ash Combustible Solids Insoluble Solids	3.39 2.91 6.31	g/m ² /month g/m ² /month g/m ² /month	
Monitoring Point 2 (DD2)		Ash Combustible Solids Insoluble Solids	2.01 0.36 2.37	g/m ² /month g/m ² /month g/m ² /month	
Monitoring Point 4 (DD5)	December 2016	Ash Combustible Solids Insoluble Solids	2.20 1.08 3.28	g/m ² /month g/m ² /month g/m ² /month	The deposited dust data for the reporting period indicates that the deposited dust results range from 2.22 g/m ² /month of insoluble solids at Monitoring Point 7, to 6.31 g/m ² /month of insoluble solids at Monitoring Point 8. Ash is considered a better indicator for the project's contribution to local dust levels. The ash level for monitoring point 8 was 3.39 g/m ² /month.
Monitoring Point 7 (DD10)		Ash Combustible Solids Insoluble Solids	1.61 0.60 2.22	g/m ² /month g/m ² /month g/m ² /month	
Monitoring Point 8 (DD6)		Ash Combustible Solids Insoluble Solids	3.39 2.91 6.31	g/m ² /month g/m ² /month g/m ² /month	
Monitoring Point 2 (DD2)		Ash Combustible Solids Insoluble Solids	2.01 0.36 2.37	g/m ² /month g/m ² /month g/m ² /month	
Monitoring Point 4 (DD5)	November 2016	Ash Combustible Solids Insoluble Solids	2.20 1.08 3.28	g/m ² /month g/m ² /month g/m ² /month	The deposited dust data for the reporting period indicates that the deposited dust results range from 2.22 g/m ² /month of insoluble solids at Monitoring Point 7, to 6.31 g/m ² /month of insoluble solids at Monitoring Point 8. Ash is considered a better indicator for the project's contribution to local dust levels. The ash level for monitoring point 8 was 3.39 g/m ² /month.
Monitoring Point 7 (DD10)		Ash Combustible Solids Insoluble Solids	1.61 0.60 2.22	g/m ² /month g/m ² /month g/m ² /month	
Monitoring Point 8 (DD6)		Ash Combustible Solids Insoluble Solids	3.39 2.91 6.31	g/m ² /month g/m ² /month g/m ² /month	
Monitoring Point 2 (DD2)		Ash Combustible Solids Insoluble Solids	2.01 0.36 2.37	g/m ² /month g/m ² /month g/m ² /month	
Monitoring Point 4 (DD5)	October 2016	Ash Combustible Solids Insoluble Solids	2.20 1.08 3.28	g/m ² /month g/m ² /month g/m ² /month	The deposited dust data for the reporting period indicates that the deposited dust results range from 2.22 g/m ² /month of insoluble solids at Monitoring Point 7, to 6.31 g/m ² /month of insoluble solids at Monitoring Point 8. Ash is
Monitoring Point 8 (DD6)		Ash Combustible Solids Insoluble Solids	3.39 2.91 6.31	g/m ² /month g/m ² /month g/m ² /month	
Monitoring Point 2 (DD2)		Ash Combustible Solids Insoluble Solids	2.01 0.36 2.37	g/m ² /month g/m ² /month g/m ² /month	
Monitoring Point 4 (DD5)		Ash Combustible Solids Insoluble Solids	2.20 1.08 3.28	g/m ² /month g/m ² /month g/m ² /month	
Monitoring Point 8 (DD6)		Ash	1.61	g/m ² /month	

Dunmore Lakes Sand Project Environmental Monitoring Report

Point 7 (DD10)		Combustible Solids Insoluble Solids	0.60 2.22	g/m ² /month g/m ² /month	considered a better indicator for the project's contribution to local dust levels. The ash level for monitoring point 8 was 3.39 g/m ² /month.	
Monitoring Point 8 (DD6)		Ash Combustible Solids Insoluble Solids	3.39 2.91 6.31	g/m ² /month g/m ² /month g/m ² /month		
Monitoring Point 2 (DD2)	September 2016	Ash Combustible Solids Insoluble Solids	2.01 0.36 2.37	g/m ² /month g/m ² /month g/m ² /month	The deposited dust data for the reporting period indicates that the deposited dust results range from 2.22 g/m ² /month of insoluble solids at Monitoring Point 7, to 6.31 g/m ² /month of insoluble solids at Monitoring Point 8. Ash is considered a better indicator for the project's contribution to local dust levels. The ash level for monitoring point 8 was 3.39 g/m ² /month.	
Monitoring Point 4 (DD5)		Ash Combustible Solids Insoluble Solids	2.20 1.08 3.28	g/m ² /month g/m ² /month g/m ² /month		
Monitoring Point 7 (DD10)		Ash Combustible Solids Insoluble Solids	1.61 0.60 2.22	g/m ² /month g/m ² /month g/m ² /month		
Monitoring Point 8 (DD6)		Ash Combustible Solids Insoluble Solids	3.39 2.91 6.31	g/m ² /month g/m ² /month g/m ² /month		
Monitoring Point 2 (DD2)		August 2016	Ash Combustible Solids Insoluble Solids	2.01 0.36 2.37		g/m ² /month g/m ² /month g/m ² /month
Monitoring Point 4 (DD5)			Ash Combustible Solids Insoluble Solids	2.20 1.08 3.28		g/m ² /month g/m ² /month g/m ² /month
Monitoring Point 7 (DD10)	Ash Combustible Solids Insoluble Solids		1.61 0.60 2.22	g/m ² /month g/m ² /month g/m ² /month		
Monitoring Point 8 (DD6)	Ash Combustible Solids Insoluble Solids		3.39 2.91 6.31	g/m ² /month g/m ² /month g/m ² /month		
Monitoring Point 2 (DD2)	July 2016	Ash Combustible Solids Insoluble Solids	2.01 0.36 2.37	g/m ² /month g/m ² /month g/m ² /month	The deposited dust data for the reporting period indicates that the deposited dust results range from 2.22 g/m ² /month of insoluble solids at Monitoring Point 7, to 6.31 g/m ² /month of insoluble solids at Monitoring Point 8. Ash is considered a better indicator for the project's contribution to local dust levels. The ash level for monitoring point 8 was 3.39 g/m ² /month.	
Monitoring Point 4 (DD5)		Ash Combustible Solids Insoluble Solids	2.20 1.08 3.28	g/m ² /month g/m ² /month g/m ² /month		
Monitoring Point 7 (DD10)		Ash Combustible Solids Insoluble Solids	1.61 0.60 2.22	g/m ² /month g/m ² /month g/m ² /month		
Monitoring Point 8 (DD6)		Ash Combustible Solids Insoluble Solids	3.39 2.91 6.31	g/m ² /month g/m ² /month g/m ² /month		
Monitoring Point 2 (DD2)	June 2016	Ash Combustible Solids Insoluble Solids	2.01 0.36 2.37	g/m ² /month g/m ² /month g/m ² /month	The deposited dust data for the reporting period indicates that the deposited dust results range from 2.22 g/m ² /month of insoluble solids at Monitoring Point 7, to 6.31 g/m ² /month of insoluble solids at Monitoring Point 8. Ash is considered a better indicator for the project's contribution to local dust levels. The ash level for monitoring point 8 was 3.39 g/m ² /month.	
Monitoring Point 4 (DD5)		Ash Combustible Solids Insoluble Solids	2.20 1.08 3.28	g/m ² /month g/m ² /month g/m ² /month		
Monitoring Point 7 (DD10)		Ash Combustible Solids Insoluble Solids	1.61 0.60 2.22	g/m ² /month g/m ² /month g/m ² /month		
Monitoring Point 8 (DD6)		Ash Combustible Solids Insoluble Solids	3.39 2.91 6.31	g/m ² /month g/m ² /month g/m ² /month		
Monitoring Point 2 (DD2)	May 2016	Ash Combustible Solids Insoluble Solids	2.01 0.36 2.37	g/m ² /month g/m ² /month g/m ² /month	The deposited dust data for the reporting period indicates that the deposited dust results range from 2.22 g/m ² /month of insoluble solids at Monitoring Point 7, to	
Monitoring Point 4 (DD5)		Ash Combustible Solids	2.20 1.08	g/m ² /month g/m ² /month		

Dunmore Lakes Sand Project Environmental Monitoring Report

		Insoluble Solids	3.28	g/m ² /month	6.31 g/m ² /month of insoluble solids at Monitoring Point 8. Ash is considered a better indicator for the project's contribution to local dust levels. The ash level for monitoring point 8 was 3.39 g/m ² /month.
Monitoring Point 7 (DD10)		Ash	1.61	g/m ² /month	
		Combustible Solids	0.60	g/m ² /month	
Monitoring Point 8 (DD6)		Insoluble Solids	2.22	g/m ² /month	
		Ash	3.39	g/m ² /month	
		Combustible Solids	2.91	g/m ² /month	
Monitoring Point 2 (DD2)	April 2016	Insoluble Solids	6.31	g/m ² /month	The deposited dust data for the reporting period indicates that the deposited dust results range from 2.22 g/m ² /month of insoluble solids at Monitoring Point 7, to 6.31 g/m ² /month of insoluble solids at Monitoring Point 8. Ash is considered a better indicator for the project's contribution to local dust levels. The ash level for monitoring point 8 was 3.39 g/m ² /month.
		Ash	2.01	g/m ² /month	
		Combustible Solids	0.36	g/m ² /month	
Monitoring Point 4 (DD5)		Insoluble Solids	2.37	g/m ² /month	
		Ash	2.20	g/m ² /month	
		Combustible Solids	1.08	g/m ² /month	
Monitoring Point 7 (DD10)		Insoluble Solids	3.28	g/m ² /month	
		Ash	1.61	g/m ² /month	
		Combustible Solids	0.60	g/m ² /month	
Monitoring Point 8 (DD6)		Insoluble Solids	2.22	g/m ² /month	
		Ash	3.39	g/m ² /month	
		Combustible Solids	2.91	g/m ² /month	
Monitoring Point 2 (DD2)	March 2016	Insoluble Solids	6.31	g/m ² /month	
		Ash	2.01	g/m ² /month	
		Combustible Solids	0.36	g/m ² /month	
Monitoring Point 4 (DD5)		Insoluble Solids	2.37	g/m ² /month	
		Ash	2.20	g/m ² /month	
		Combustible Solids	1.08	g/m ² /month	
Monitoring Point 7 (DD10)		Insoluble Solids	3.28	g/m ² /month	
		Ash	1.61	g/m ² /month	
		Combustible Solids	0.60	g/m ² /month	
Monitoring Point 8 (DD6)		Insoluble Solids	2.22	g/m ² /month	
		Ash	3.39	g/m ² /month	
		Combustible Solids	2.91	g/m ² /month	
Monitoring Point 2 (DD2)	February 2016	Insoluble Solids	6.31	g/m ² /month	The deposited dust data for the reporting period indicates that the deposited dust results range from 2.22 g/m ² /month of insoluble solids at Monitoring Point 7, to 6.31 g/m ² /month of insoluble solids at Monitoring Point 8. Ash is considered a better indicator for the project's contribution to local dust levels. The ash level for monitoring point 8 was 3.39 g/m ² /month.
		Ash	2.01	g/m ² /month	
		Combustible Solids	0.36	g/m ² /month	
Monitoring Point 4 (DD5)		Insoluble Solids	2.37	g/m ² /month	
		Ash	2.20	g/m ² /month	
		Combustible Solids	1.08	g/m ² /month	
Monitoring Point 7 (DD10)		Insoluble Solids	3.28	g/m ² /month	
		Ash	1.61	g/m ² /month	
		Combustible Solids	0.60	g/m ² /month	
Monitoring Point 8 (DD6)		Insoluble Solids	2.22	g/m ² /month	
		Ash	3.39	g/m ² /month	
		Combustible Solids	2.91	g/m ² /month	
Monitoring Point 2 (DD2)	January 2016	Insoluble Solids	6.31	g/m ² /month	The deposited dust data for the reporting period indicates that the deposited dust results range from 2.22 g/m ² /month of insoluble solids at Monitoring Point 7, to 6.31 g/m ² /month of insoluble solids at Monitoring Point 8. Ash is considered a better indicator for the project's contribution to local dust levels. The ash level for monitoring point 8 was 3.39 g/m ² /month.
		Ash	2.01	g/m ² /month	
		Combustible Solids	0.36	g/m ² /month	
Monitoring Point 4 (DD5)		Insoluble Solids	2.37	g/m ² /month	
		Ash	2.20	g/m ² /month	
		Combustible Solids	1.08	g/m ² /month	
Monitoring Point 7 (DD10)		Insoluble Solids	3.28	g/m ² /month	
		Ash	1.61	g/m ² /month	
		Combustible Solids	0.60	g/m ² /month	
Monitoring Point 8 (DD6)		Insoluble Solids	2.22	g/m ² /month	
		Ash	3.39	g/m ² /month	
		Combustible Solids	2.91	g/m ² /month	
Monitoring Point 2 (DD2)	December 2016	Insoluble Solids	6.31	g/m ² /month	The deposited dust data for the reporting period indicates that the deposited dust results range from
		Ash	2.01	g/m ² /month	
		Combustible Solids	0.36	g/m ² /month	
Monitoring Point 4 (DD5)		Insoluble Solids	2.37	g/m ² /month	
		Ash	2.20	g/m ² /month	
		Combustible Solids	1.08	g/m ² /month	
Monitoring Point 7 (DD10)		Insoluble Solids	3.28	g/m ² /month	
		Ash	1.61	g/m ² /month	
		Combustible Solids	0.60	g/m ² /month	
Monitoring Point 8 (DD6)		Insoluble Solids	2.22	g/m ² /month	
		Ash	3.39	g/m ² /month	
		Combustible Solids	2.91	g/m ² /month	

Dunmore Lakes Sand Project Environmental Monitoring Report

Monitoring Point 4 (DD5)		Ash	2.20	$\text{g/m}^2/\text{month}$	2.22 $\text{g/m}^2/\text{month}$ of insoluble solids at Monitoring Point 7, to 6.31 $\text{g/m}^2/\text{month}$ of insoluble solids at Monitoring Point 8. Ash is considered a better indicator for the project's contribution to local dust levels. The ash level for monitoring point 8 was 3.39 $\text{g/m}^2/\text{month}$.
Monitoring Point 7 (DD10)		Combustible Solids	1.08	$\text{g/m}^2/\text{month}$	
Monitoring Point 8 (DD6)		Insoluble Solids	3.28	$\text{g/m}^2/\text{month}$	
Monitoring Point 2 (DD2)	November 2015	Ash	2.01	$\text{g/m}^2/\text{month}$	The deposited dust data for the reporting period indicates that the deposited dust results range from 2.22 $\text{g/m}^2/\text{month}$ of insoluble solids at Monitoring Point 7, to 6.31 $\text{g/m}^2/\text{month}$ of insoluble solids at Monitoring Point 8. Ash is considered a better indicator for the project's contribution to local dust levels. The ash level for monitoring point 8 was 3.39 $\text{g/m}^2/\text{month}$.
Monitoring Point 4 (DD5)		Combustible Solids	0.36	$\text{g/m}^2/\text{month}$	
Monitoring Point 7 (DD10)		Insoluble Solids	2.37	$\text{g/m}^2/\text{month}$	
Monitoring Point 8 (DD6)		Ash	2.20	$\text{g/m}^2/\text{month}$	
Monitoring Point 2 (DD2)	October 2015	Combustible Solids	1.08	$\text{g/m}^2/\text{month}$	The deposited dust data for the reporting period indicates that the deposited dust results range from 2.22 $\text{g/m}^2/\text{month}$ of insoluble solids at Monitoring Point 7, to 6.31 $\text{g/m}^2/\text{month}$ of insoluble solids at Monitoring Point 8. Ash is considered a better indicator for the project's contribution to local dust levels. The ash level for monitoring point 8 was 3.39 $\text{g/m}^2/\text{month}$.
Monitoring Point 4 (DD5)		Insoluble Solids	3.28	$\text{g/m}^2/\text{month}$	
Monitoring Point 7 (DD10)		Ash	1.61	$\text{g/m}^2/\text{month}$	
Monitoring Point 8 (DD6)		Combustible Solids	0.60	$\text{g/m}^2/\text{month}$	
Monitoring Point 2 (DD2)	September 2015	Insoluble Solids	2.22	$\text{g/m}^2/\text{month}$	The deposited dust data for the reporting period indicates that the deposited dust results range from 2.22 $\text{g/m}^2/\text{month}$ of insoluble solids at Monitoring Point 7, to 6.31 $\text{g/m}^2/\text{month}$ of insoluble solids at Monitoring Point 8. Ash is considered a better indicator for the project's contribution to local dust levels. The ash level for monitoring point 8 was 3.39 $\text{g/m}^2/\text{month}$.
Monitoring Point 4 (DD5)		Ash	3.39	$\text{g/m}^2/\text{month}$	
Monitoring Point 7 (DD10)		Combustible Solids	2.91	$\text{g/m}^2/\text{month}$	
Monitoring Point 8 (DD6)		Insoluble Solids	6.31	$\text{g/m}^2/\text{month}$	
Monitoring Point 2 (DD2)	August 2015	Ash	2.01	$\text{g/m}^2/\text{month}$	The deposited dust data for the reporting period indicates that the deposited dust results range from 2.22 $\text{g/m}^2/\text{month}$ of insoluble solids at Monitoring Point 7, to 6.31 $\text{g/m}^2/\text{month}$ of insoluble solids at Monitoring Point 8. Ash is considered a better indicator for the project's contribution to local dust levels. The ash level for monitoring point 8 was 3.39 $\text{g/m}^2/\text{month}$.
Monitoring Point 4 (DD5)		Combustible Solids	0.36	$\text{g/m}^2/\text{month}$	
Monitoring Point 7 (DD10)		Insoluble Solids	2.37	$\text{g/m}^2/\text{month}$	
Monitoring Point 8 (DD6)		Ash	2.20	$\text{g/m}^2/\text{month}$	
Monitoring Point 2 (DD2)		Combustible Solids	1.08	$\text{g/m}^2/\text{month}$	The deposited dust data for the reporting period indicates that the deposited dust results range from 2.22 $\text{g/m}^2/\text{month}$ of insoluble solids at Monitoring Point 7, to 6.31 $\text{g/m}^2/\text{month}$ of insoluble solids at Monitoring Point 8. Ash is considered a better indicator for the project's contribution to local dust levels. The ash level for monitoring point 8 was 3.39 $\text{g/m}^2/\text{month}$.
Monitoring Point 4 (DD5)		Insoluble Solids	3.28	$\text{g/m}^2/\text{month}$	
Monitoring Point 7 (DD10)		Ash	1.61	$\text{g/m}^2/\text{month}$	
Monitoring Point 8 (DD6)		Combustible Solids	0.60	$\text{g/m}^2/\text{month}$	
Monitoring Point 2 (DD2)		Insoluble Solids	2.22	$\text{g/m}^2/\text{month}$	
Monitoring Point 4 (DD5)		Ash	3.39	$\text{g/m}^2/\text{month}$	
Monitoring Point 7 (DD10)		Combustible Solids	2.91	$\text{g/m}^2/\text{month}$	
Monitoring Point 8 (DD6)		Insoluble Solids	6.31	$\text{g/m}^2/\text{month}$	
Monitoring Point 2 (DD2)		Ash	2.01	$\text{g/m}^2/\text{month}$	

Dunmore Lakes Sand Project Environmental Monitoring Report

		Insoluble Solids	6.31	g/m ² /month	g/m ² /month.
Monitoring Point 2 (DD2)	February 2015	Ash	2.01	g/m ² /month	The deposited dust data for the reporting period indicates that the deposited dust results range from 2.22 g/m ² /month of insoluble solids at Monitoring Point 7, to 6.31 g/m ² /month of insoluble solids at Monitoring Point 8. Ash is considered a better indicator for the project's contribution to local dust levels. The ash level for monitoring point 8 was 3.39 g/m ² /month.
		Combustible Solids	0.36	g/m ² /month	
		Insoluble Solids	2.37	g/m ² /month	
Monitoring Point 4 (DD5)		Ash	2.20	g/m ² /month	
		Combustible Solids	1.08	g/m ² /month	
		Insoluble Solids	3.28	g/m ² /month	
Monitoring Point 7 (DD10)		Ash	1.61	g/m ² /month	
		Combustible Solids	0.60	g/m ² /month	
		Insoluble Solids	2.22	g/m ² /month	
Monitoring Point 8 (DD6)		Ash	3.39	g/m ² /month	
		Combustible Solids	2.91	g/m ² /month	
		Insoluble Solids	6.31	g/m ² /month	
Monitoring Point 2 (DD2)	January 2015	Ash	2.01	g/m ² /month	The deposited dust data for the reporting period indicates that the deposited dust results range from 2.22 g/m ² /month of insoluble solids at Monitoring Point 7, to 6.31 g/m ² /month of insoluble solids at Monitoring Point 8. Ash is considered a better indicator for the project's contribution to local dust levels. The ash level for monitoring point 8 was 3.39 g/m ² /month.
		Combustible Solids	0.36	g/m ² /month	
		Insoluble Solids	2.37	g/m ² /month	
Monitoring Point 4 (DD5)		Ash	2.20	g/m ² /month	
		Combustible Solids	1.08	g/m ² /month	
		Insoluble Solids	3.28	g/m ² /month	
Monitoring Point 7 (DD10)		Ash	1.61	g/m ² /month	
		Combustible Solids	0.60	g/m ² /month	
		Insoluble Solids	2.22	g/m ² /month	
Monitoring Point 8 (DD6)		Ash	3.39	g/m ² /month	
		Combustible Solids	2.91	g/m ² /month	
		Insoluble Solids	6.31	g/m ² /month	
Monitoring Point 2 (DD2)	December 2014	Ash	2.01	g/m ² /month	The deposited dust data for the reporting period indicates that the deposited dust results range from 2.22 g/m ² /month of insoluble solids at Monitoring Point 7, to 6.31 g/m ² /month of insoluble solids at Monitoring Point 8. Ash is considered a better indicator for the project's contribution to local dust levels. The ash level for monitoring point 8 was 3.39 g/m ² /month.
		Combustible Solids	0.36	g/m ² /month	
		Insoluble Solids	2.37	g/m ² /month	
Monitoring Point 4 (DD5)		Ash	2.20	g/m ² /month	
		Combustible Solids	1.08	g/m ² /month	
		Insoluble Solids	3.28	g/m ² /month	
Monitoring Point 7 (DD10)		Ash	1.61	g/m ² /month	
		Combustible Solids	0.60	g/m ² /month	
		Insoluble Solids	2.22	g/m ² /month	
Monitoring Point 8 (DD6)		Ash	3.39	g/m ² /month	
		Combustible Solids	2.91	g/m ² /month	
		Insoluble Solids	6.31	g/m ² /month	
Monitoring Point 2 (DD2)	November 2014	Ash	2.01	g/m ² /month	The deposited dust data for the reporting period indicates that the deposited dust results range from 2.22 g/m ² /month of insoluble solids at Monitoring Point 7, to 6.31 g/m ² /month of insoluble solids at Monitoring Point 8. Ash is considered a better indicator for the project's contribution to local dust levels. The ash level for monitoring point 8 was 3.39 g/m ² /month.
		Combustible Solids	0.36	g/m ² /month	
		Insoluble Solids	2.37	g/m ² /month	
Monitoring Point 4 (DD5)		Ash	2.20	g/m ² /month	
		Combustible Solids	1.08	g/m ² /month	
		Insoluble Solids	3.28	g/m ² /month	
Monitoring Point 7 (DD10)		Ash	1.61	g/m ² /month	
		Combustible Solids	0.60	g/m ² /month	
		Insoluble Solids	2.22	g/m ² /month	
Monitoring Point 8 (DD6)		Ash	3.39	g/m ² /month	
		Combustible Solids	2.91	g/m ² /month	
		Insoluble Solids	6.31	g/m ² /month	
Monitoring Point 2 (DD2)	October 2014	Ash	2.01	g/m ² /month	The deposited dust data for the reporting period indicates that the deposited dust results range from 2.22 g/m ² /month of insoluble solids at Monitoring Point 7, to 6.31 g/m ² /month of insoluble solids at Monitoring Point 8. Ash is considered a better indicator for the project's contribution to local dust levels. The ash level for monitoring point 8 was 3.39 g/m ² /month.
		Combustible Solids	0.36	g/m ² /month	
		Insoluble Solids	2.37	g/m ² /month	
Monitoring Point 4 (DD5)		Ash	2.20	g/m ² /month	
		Combustible Solids	1.08	g/m ² /month	
		Insoluble Solids	3.28	g/m ² /month	
Monitoring Point 7 (DD10)		Ash	1.61	g/m ² /month	
		Combustible Solids	0.60	g/m ² /month	
		Insoluble Solids	2.22	g/m ² /month	

Dunmore Lakes Sand Project Environmental Monitoring Report

Monitoring Point 8 (DD6)		Ash Combustible Solids Insoluble Solids	3.39 2.91 6.31	g/m ² /month g/m ² /month g/m ² /month	dust levels. The ash level for monitoring point 8 was 3.39 g/m ² /month.
Monitoring Point 2 (DD2)	September 2014	Ash Combustible Solids Insoluble Solids	2.01 0.36 2.37	g/m ² /month g/m ² /month g/m ² /month	The deposited dust data for the reporting period indicates that the deposited dust results range from 2.22 g/m ² /month of insoluble solids at Monitoring Point 7, to 6.31 g/m ² /month of insoluble solids at Monitoring Point 8. Ash is considered a better indicator for the project's contribution to local dust levels. The ash level for monitoring point 8 was 3.39 g/m ² /month.
Monitoring Point 4 (DD5)		Ash Combustible Solids Insoluble Solids	2.20 1.08 3.28	g/m ² /month g/m ² /month g/m ² /month	
Monitoring Point 7 (DD10)		Ash Combustible Solids Insoluble Solids	1.61 0.60 2.22	g/m ² /month g/m ² /month g/m ² /month	
Monitoring Point 8 (DD6)		Ash Combustible Solids Insoluble Solids	3.39 2.91 6.31	g/m ² /month g/m ² /month g/m ² /month	
Monitoring Point 2 (DD2)		Ash Combustible Solids Insoluble Solids	2.01 0.36 2.37	g/m ² /month g/m ² /month g/m ² /month	
Monitoring Point 4 (DD5)	August 2014	Ash Combustible Solids Insoluble Solids	2.20 1.08 3.28	g/m ² /month g/m ² /month g/m ² /month	The deposited dust data for the reporting period indicates that the deposited dust results range from 2.22 g/m ² /month of insoluble solids at Monitoring Point 7, to 6.31 g/m ² /month of insoluble solids at Monitoring Point 8. Ash is considered a better indicator for the project's contribution to local dust levels. The ash level for monitoring point 8 was 3.39 g/m ² /month.
Monitoring Point 7 (DD10)		Ash Combustible Solids Insoluble Solids	1.61 0.60 2.22	g/m ² /month g/m ² /month g/m ² /month	
Monitoring Point 8 (DD6)		Ash Combustible Solids Insoluble Solids	3.39 2.91 6.31	g/m ² /month g/m ² /month g/m ² /month	
Monitoring Point 2 (DD2)		Ash Combustible Solids Insoluble Solids	2.01 0.36 2.37	g/m ² /month g/m ² /month g/m ² /month	
Monitoring Point 4 (DD5)	July 2014	Ash Combustible Solids Insoluble Solids	2.20 1.08 3.28	g/m ² /month g/m ² /month g/m ² /month	The deposited dust data for the reporting period indicates that the deposited dust results range from 2.22 g/m ² /month of insoluble solids at Monitoring Point 7, to 6.31 g/m ² /month of insoluble solids at Monitoring Point 8. Ash is considered a better indicator for the project's contribution to local dust levels. The ash level for monitoring point 8 was 3.39 g/m ² /month.
Monitoring Point 7 (DD10)		Ash Combustible Solids Insoluble Solids	1.61 0.60 2.22	g/m ² /month g/m ² /month g/m ² /month	
Monitoring Point 8 (DD6)		Ash Combustible Solids Insoluble Solids	3.39 2.91 6.31	g/m ² /month g/m ² /month g/m ² /month	
Monitoring Point 2 (DD2)		Ash Combustible Solids Insoluble Solids	2.01 0.36 2.37	g/m ² /month g/m ² /month g/m ² /month	
Monitoring Point 4 (DD5)	June 2014	Ash Combustible Solids Insoluble Solids	2.20 1.08 3.28	g/m ² /month g/m ² /month g/m ² /month	The deposited dust data for the reporting period indicates that the deposited dust results range from 2.22 g/m ² /month of insoluble solids at Monitoring Point 7, to 6.31 g/m ² /month of insoluble solids at Monitoring Point 8. Ash is considered a better indicator for the project's contribution to local dust levels. The ash level for monitoring point 8 was 3.39 g/m ² /month.
Monitoring Point 7 (DD10)		Ash Combustible Solids Insoluble Solids	1.61 0.60 2.22	g/m ² /month g/m ² /month g/m ² /month	
Monitoring Point 8 (DD6)		Ash Combustible Solids Insoluble Solids	3.39 2.91 6.31	g/m ² /month g/m ² /month g/m ² /month	
Monitoring Point 7 (DD10)		Ash Combustible Solids Insoluble Solids	1.61 0.60 2.22	g/m ² /month g/m ² /month g/m ² /month	
Monitoring Point 8 (DD6)		Ash Combustible Solids Insoluble Solids	3.39 2.91 6.31	g/m ² /month g/m ² /month g/m ² /month	

Dunmore Lakes Sand Project Environmental Monitoring Report

Water Monitoring

Water Quality Monitoring is conducted as per condition M2.3 of EPL 11147. The water quality results for the reporting period are tabled below.

Sample
 Period: March 2019
 Dunmore Lakes Sand
 Licensee: Project
 Licensee Princes Hwy, Dunmore NSW
 Address: 2529
 EPL No: 11147

Location	Monitoring Frequency	Pollutant	Measurement	Unit	Comments
Monitoring Point 9 DW20b	29 March 2019 (monthly)	pH	ND	pH	
		Total suspended solids	ND	mg/L	
		Turbidity	ND	NTU	
Monitoring Point 10 DW21b	29 March 2019 (monthly)	pH	ND	pH	
		Total suspended solids	ND	mg/L	
		Turbidity	ND	NTU	
Monitoring Point 11 EPL12	29 March 2019 (monthly)	pH	7.1	pH	
		Total suspended solids	15	mg/L	
		Turbidity	ND	NTU	
Monitoring Point 12 EPL11	29 March 2019 (monthly)	pH	ND	pH	
		Total suspended solids	ND	mg/L	
		Turbidity	ND	NTU	
Monitoring Point 18 EPL13	29 March 2019 (monthly)	pH	7.2	pH	
		Total suspended solids	18	mg/L	
		Turbidity	ND	NTU	
Monitoring Point 9 DW20b	19 March 2019 (>20mm)	pH	8.1	pH	
		Total suspended solids	17	mg/L	
		Turbidity	14.4	NTU	
Monitoring Point 10 DW21b	19 March 2019 (>20mm)	pH	ND	pH	
		Total suspended solids	ND	mg/L	
		Turbidity	ND	NTU	
Monitoring Point 11 EPL12	19 March 2019 (>20mm)	pH	ND	pH	
		Total suspended solids	ND	mg/L	
		Turbidity	ND	NTU	
Monitoring Point 12 EPL11	19 March 2019 (>20mm)	pH	5.9	pH	
		Total suspended solids	7	mg/L	
		Turbidity	33.2	NTU	
Monitoring Point 18 EPL13	19 March 2019 (>20mm)	pH	ND	pH	
		Total suspended solids	ND	mg/L	
		Turbidity	ND	NTU	
Monitoring Point 9 DW20b	18 March 2019 (>20mm)	pH	8.2	pH	
		Total suspended solids	20	mg/L	
		Turbidity	10.3	NTU	
Monitoring Point 10 DW21b	18 March 2019 (>20mm)	pH	ND	pH	
		Total suspended solids	ND	mg/L	
		Turbidity	ND	NTU	
Monitoring Point 11 EPL12	18 March 2019 (>20mm)	pH	ND	pH	
		Total suspended solids	ND	mg/L	
		Turbidity	ND	NTU	
Monitoring Point	18 March	pH	ND	pH	

Dunmore Lakes Sand Project Environmental Monitoring Report

12 EPL11	2019 (>20mm)	Total suspended solids Turbidity	ND ND	mg/L NTU	
Monitoring Point 18 EPL13	18 March 2019 (>20mm)	pH Total suspended solids Turbidity	7.0 24 19.5	pH mg/L NTU	
Monitoring Point 9 DW20b	16 March 2019 (>20mm)	pH Total suspended solids Turbidity	7.9 30 13.2	pH mg/L NTU	
Monitoring Point 10 DW21b	16 March 2019 (>20mm)	pH Total suspended solids Turbidity	ND ND ND	pH mg/L NTU	
Monitoring Point 11 EPL12	16 March 2019 (>20mm)	pH Total suspended solids Turbidity	ND ND ND	pH mg/L NTU	
Monitoring Point 12 EPL11	16 March 2019 (>20mm)	pH Total suspended solids Turbidity	ND ND ND	pH mg/L NTU	
Monitoring Point 18 EPL13	16 March 2019 (>20mm)	pH Total suspended solids Turbidity	8.3 29 12.7	pH mg/L NTU	
Monitoring Point 9 DW20b	15 March 2019 (>20mm)	pH Total suspended solids Turbidity	8.1 23 10.2	pH mg/L NTU	
Monitoring Point 10 DW21b	15 March 2019 (>20mm)	pH Total suspended solids Turbidity	ND ND ND	pH mg/L NTU	
Monitoring Point 11 EPL12	15 March 2019 (>20mm)	pH Total suspended solids Turbidity	ND ND ND	pH mg/L NTU	
Monitoring Point 12 EPL11	15 March 2019 (>20mm)	pH Total suspended solids Turbidity	ND ND ND	pH mg/L NTU	
Monitoring Point 18 EPL13	15 March 2019 (>20mm)	pH Total suspended solids Turbidity	ND ND ND	pH mg/L NTU	

ND: No data

Note:

The water quality data for the month of March 2019 indicates that there was four (4) instances where 20mm or more of rainfall was received at the premises within a 24 hour period.

Dunmore Lakes Sand Project Environmental Monitoring Report
Historical Water Monitoring Data

Location	Date	Pollutant	Measurement	Unit	Comments
Monitoring Point 9 DW20b	6 March 2019 (Monthly)	pH Total suspended solids Turbidity	7.5 >5 3.8	pH mg/L NTU	The water quality data for the month of February 2019 indicates that there were one instances where 20mm or more of rainfall was received at the premises within a 24 hour period
Monitoring Point 10 DW21b	6 March 2019 (Monthly)	pH Total suspended solids Turbidity	ND ND ND	pH mg/L NTU	
Monitoring Point 11 EPL12	6 March 2019 (Monthly)	pH Total suspended solids Turbidity	ND ND ND	pH mg/L NTU	
Monitoring Point 12 EPL11	6 March 2019 (Monthly)	pH Total suspended solids Turbidity	ND ND ND	pH mg/L NTU	
Monitoring Point 18 EPL13	6 March 2019 (Monthly)	pH Total suspended solids Turbidity	7.1 <5 4.3	pH mg/L NTU	
Monitoring Point 9 DW20b	18 January 2019 (Monthly)	pH Total suspended solids Turbidity	8.0 >5 2.5	pH mg/L NTU	
Monitoring Point 10 DW21b	18 January 2019 (Monthly)	pH Total suspended solids Turbidity	ND ND ND	pH mg/L NTU	
Monitoring Point 11 EPL12	18 January 2019 (Monthly)	pH Total suspended solids Turbidity	7.0 55 12.3	pH mg/L NTU	
Monitoring Point 12 EPL11	18 January 2019 (Monthly)	pH Total suspended solids Turbidity	ND ND ND	pH mg/L NTU	
Monitoring Point 18 EPL13	18 January 2019 (Monthly)	pH Total suspended solids Turbidity	7.1 11 6.9	pH mg/L NTU	
Monitoring Point 9 DW20b	6 January 2019 (>20mm)	pH Total suspended solids Turbidity	8.0 12 4.5	pH mg/L NTU	
Monitoring Point 10 DW21b	6 January 2019 (>20mm)	pH Total suspended solids Turbidity	ND ND ND	pH mg/L NTU	
Monitoring Point 11 EPL12	6 January 2019 (>20mm)	pH Total suspended solids Turbidity	ND ND ND	pH mg/L NTU	
Monitoring Point 12 EPL11	6 January 2019 (>20mm)	pH Total suspended solids Turbidity	ND ND ND	pH mg/L NTU	
Monitoring Point 18 EPL13	6 January 2019 (>20mm)	pH Total suspended solids Turbidity	7.3 16 21.6	pH mg/L NTU	
Monitoring Point 9 DW20b	19 December 2018 (Monthly)	pH Total suspended solids Turbidity		pH mg/L NTU	
Monitoring Point 10 DW21b	19 December 2018 (Monthly)	pH Total suspended solids Turbidity	ND ND ND	pH mg/L NTU	
Monitoring Point 11 EPL12	19 December 2018 (Monthly)	pH Total suspended solids Turbidity	7.1 >5 1.1	pH mg/L NTU	

Dunmore Lakes Sand Project Environmental Monitoring Report

Location	Date	Pollutant	Measurement	Unit	Comments
Monitoring Point 12 EPL11	19 December 2018 (Monthly)	pH	ND	pH	The water quality data for the month of November 2018 indicates that there were two instances where 20mm or more of rainfall was received at the premises within a 24 hour period
		Total suspended solids	ND	mg/L	
		Turbidity	ND	NTU	
Monitoring Point 18 EPL13	19 December 2018 (Monthly)	pH	7.1	pH	
		Total suspended solids	<5	mg/L	
		Turbidity	4.3	NTU	
Monitoring Point 9 DW20b	29 Nov 2018 Monthly and >20mm)	pH	7.8	pH	
		Total suspended solids	14	mg/L	
Monitoring Point 10 DW21b	29 Nov 2018 Monthly and >20mm)	Turbidity	ND	NTU	
		pH	ND	pH	
Monitoring Point 11 EPL12	29 Nov 2018 Monthly and >20mm)	Total suspended solids	ND	mg/L	
		Turbidity	ND	NTU	
Monitoring Point 12 EPL11	29 Nov 2018 Monthly and >20mm)	pH	ND	pH	
		Total suspended solids	ND	mg/L	
Monitoring Point 18 EPL13	29 Nov 2018 Monthly and >20mm)	Turbidity	ND	NTU	
		pH	7.8	pH	
Monitoring Point 9 DW20b	8 Nov 2018 (>20mm)	Total suspended solids	8.1	mg/L	
		Turbidity	>5	NTU	
Monitoring Point 10 DW21b	8 Nov 2018 (>20mm)	pH	ND	pH	
		Total suspended solids	ND	mg/L	
Monitoring Point 11 EPL12	8 Nov 2018 (>20mm)	Turbidity	ND	NTU	
		pH	ND	pH	
Monitoring Point 12 EPL11	8 Nov 2018 (>20mm)	Total suspended solids	ND	mg/L	
		Turbidity	ND	NTU	
Monitoring Point 18 EPL13	8 Nov 2018 (>20mm)	pH	7.8	pH	
		Total suspended solids	13	mg/L	
Monitoring Point 9 DW20b	5 Nov 2018 (Monthly)	Turbidity	35	NTU	
		pH	7.6	pH	
Monitoring Point 10 DW21b	5 Nov 2018 (Monthly)	Total suspended solids	8	mg/L	
		Turbidity	6.6	NTU	
Monitoring Point 11 EPL12	5 Nov 2018 (Monthly)	pH	ND	pH	
		Total suspended solids	ND	mg/L	
Monitoring Point 12 EPL11	5 Nov 2018 (Monthly)	Turbidity	ND	NTU	
		pH	ND	pH	
Monitoring Point 18 EPL13	5 Nov 2018 (Monthly)	Total suspended solids	ND	mg/L	
		Turbidity	ND	NTU	
Monitoring Point 9 DW20b	5 Oct 2018 (>20mm)	pH	7.4	pH	
		Total suspended solids	14	mg/L	
Monitoring Point 10 DW21b	5 Oct 2018 (>20mm)	Turbidity	15.3	NTU	
		pH	8.1	pH	
Monitoring Point 9 DW20b	5 Oct 2018 (>20mm)	Total suspended solids	12	mg/L	
		Turbidity	10	NTU	
Monitoring Point 10 DW21b	5 Oct 2018 (>20mm)	pH	ND	pH	
		Total suspended solids	ND	mg/L	
Monitoring Point 10 DW21b	5 Oct 2018 (>20mm)	Turbidity	ND	NTU	
		pH	ND	pH	
Monitoring Point 10 DW21b	5 Oct 2018 (>20mm)	Total suspended solids	ND	mg/L	
		Turbidity	ND	NTU	

Dunmore Lakes Sand Project Environmental Monitoring Report

Location	Date	Pollutant	Measurement	Unit	Comments	
Monitoring Point 11 EPL12	5 Oct 2018 (>20mm)	pH	ND	pH		
		Total suspended solids	ND	mg/L		
		Turbidity	ND	NTU		
Monitoring Point 12 EPL11	5 Oct 2018 (>20mm)	pH	ND	pH		
		Total suspended solids	ND	mg/L		
		Turbidity	ND	NTU		
Monitoring Point 18 EPL13	5 Oct 2018 (>20mm)	pH	ND	pH		
		Total suspended solids	ND	mg/L		
		Turbidity	ND	NTU		
Monitoring Point 9 DW20b	4 Oct 2018 (Monthly)	pH	7.8	pH		The water quality data for the month of September 2018 indicates that there were no instances where 20mm or more of rainfall was received at the premises within a 24 hour period
		Total suspended solids	<5	mg/L		
		Turbidity	4	NTU		
Monitoring Point 10 DW21b	4 Oct 2018 (Monthly)	pH	ND	pH		
		Total suspended solids	ND	mg/L		
		Turbidity	ND	NTU		
Monitoring Point 11 EPL12	4 Oct 2018 (Monthly)	pH	ND	pH		
		Total suspended solids	ND	mg/L		
		Turbidity	ND	NTU		
Monitoring Point 12 EPL11	4 Oct 2018 (Monthly)	pH	ND	pH		
		Total suspended solids	ND	mg/L		
		Turbidity	ND	NTU		
Monitoring Point 18 EPL13	4 Oct 2018 (Monthly)	pH	ND	pH		
		Total suspended solids	ND	mg/L		
		Turbidity	ND	NTU		
Monitoring Point 9 DW20b	5 Sept 2018 (Monthly)	pH	8.2	pH	The water quality data for the month of August 2018 indicates that there were one instances where 20mm or more of rainfall was received at the premises within a 24 hour period	
		Total suspended solids	>5	mg/L		
		Turbidity	8.7	NTU		
Monitoring Point 10 DW21b	5 Sept 2018 (Monthly)	pH	ND	pH		
		Total suspended solids	ND	mg/L		
		Turbidity	ND	NTU		
Monitoring Point 11 EPL12	5 Sept 2018 (Monthly)	pH	ND	pH		
		Total suspended solids	ND	mg/L		
		Turbidity	ND	NTU		
Monitoring Point 12 EPL11	5 Sept 2018 (Monthly)	pH	ND	pH		
		Total suspended solids	ND	mg/L		
		Turbidity	ND	NTU		
Monitoring Point 18 EPL13	5 Sept 2018 (Monthly)	pH	ND	pH		
		Total suspended solids	ND	mg/L		
		Turbidity	ND	NTU		
Monitoring Point 9 DW20b	6 Aug 2018 (Monthly)	pH	ND	pH	The water quality data for the month of July 2018 indicates that there were no instances where 20mm or more of rainfall was received at the premises within a 24 hour period	
		Total suspended solids	ND	mg/L		
		Turbidity	ND	NTU		
Monitoring Point 10 DW21b	6 Aug 2018 (Monthly)	pH	ND	pH		
		Total suspended solids	ND	mg/L		
		Turbidity	ND	NTU		
Monitoring Point 11 EPL12	6 Aug 2018 (Monthly)	pH	ND	pH		
		Total suspended solids	ND	mg/L		
		Turbidity	ND	NTU		
Monitoring Point 12 EPL11	6 Aug 2018 (Monthly)	pH	ND	pH		
		Total suspended solids	ND	mg/L		
		Turbidity	ND	NTU		
Monitoring Point 18 EPL13	6 Aug 2018 (Monthly)	pH	ND	pH		
		Total suspended solids	ND	mg/L		
		Turbidity	ND	NTU		
Monitoring Point 9 DW20b	28 June 2018 Monthly and >20mm)	pH	7.8	pH	The water quality data for the month of June 2018 indicates that there were one instances	
		Total suspended solids	18	mg/L		
		Turbidity	12.6	NTU		

Dunmore Lakes Sand Project Environmental Monitoring Report

Location	Date	Pollutant	Measurement	Unit	Comments
Monitoring Point 10 DW21b	28 June 2018 Monthly and >20mm)	pH Total suspended solids Turbidity	ND ND ND	pH mg/L NTU	where 20mm or more of rainfall was received at the premises within a 24 hour period
Monitoring Point 11 EPL12	28 June 2018 Monthly and >20mm)	pH Total suspended solids Turbidity	ND ND ND	pH mg/L NTU	
Monitoring Point 12 EPL11	28 June 2018 Monthly and >20mm)	pH Total suspended solids Turbidity	ND ND ND	pH mg/L NTU	
Monitoring Point 18 EPL13	28 June 2018 Monthly and >20mm)	pH Total suspended solids Turbidity	7.1 <5 4.3	pH mg/L NTU	
Monitoring Point 9 DW20b	1 June 2018 (Monthly)	pH Total suspended solids Turbidity	7.9 <5 ND	pH mg/L NTU	The water quality data for the month of May 2018 indicates that there were no instances where 20mm or more of rainfall was received at the premises within a 24 hour period.
Monitoring Point 10 DW21b	1 June 2018 (Monthly)	pH Total suspended solids Turbidity	ND ND ND	pH mg/L NTU	
Monitoring Point 11 EPL12	1 June 2018 (Monthly)	pH Total suspended solids Turbidity	ND ND ND	pH mg/L NTU	
Monitoring Point 12 EPL11	1 June 2018 (Monthly)	pH Total suspended solids Turbidity	ND ND ND	pH mg/L NTU	
Monitoring Point 18 EPL13	1 June 2018 (Monthly)	pH Total suspended solids Turbidity	ND ND ND	pH mg/L NTU	
Monitoring Point 9 DW20b	1 May 2018 (Monthly)	pH Total suspended solids Turbidity	7.7 16 ND	pH mg/L NTU	
Monitoring Point 10 DW21b	1 May 2018 (Monthly)	pH Total suspended solids Turbidity	ND ND ND	pH mg/L NTU	
Monitoring Point 11 EPL12	1 May 2018 (Monthly)	pH Total suspended solids Turbidity	ND ND ND	pH mg/L NTU	The water quality data for the month of April 2018 indicates that there were no instances where 20mm or more of rainfall was received at the premises within a 24 hour period
Monitoring Point 12 EPL11	1 May 2018 (Monthly)	pH Total suspended solids Turbidity	ND ND ND	pH mg/L NTU	
Monitoring Point 18 EPL13	1 May 2018 (Monthly)	pH Total suspended solids Turbidity	ND ND ND	pH mg/L NTU	
Monitoring Point 9 DW20b	29 March 2018 (Monthly)	pH Total suspended solids Turbidity	7.5 7 9.0	pH mg/L NTU	
Monitoring Point 10 DW21b	29 March 2018 (Monthly)	pH Total suspended solids Turbidity	ND ND ND	pH mg/L NTU	
Monitoring Point 11 EPL12	29 March 2018 (Monthly)	pH Total suspended solids Turbidity	ND ND ND	pH mg/L NTU	The water quality data for the month of March 2018 indicates that there were no instances where 20mm or more of rainfall was received at the premises within a 24 hour period
Monitoring Point 12 EPL11	29 March 2018 (Monthly)	pH Total suspended solids Turbidity	ND ND ND	pH mg/L NTU	
Monitoring Point 18 EPL13	29 March 2018 (Monthly)	pH Total suspended solids Turbidity	ND ND ND	pH mg/L NTU	

Dunmore Lakes Sand Project Environmental Monitoring Report

Location	Date	Pollutant	Measurement	Unit	Comments
Monitoring Point 9 DW20b	5 March 2018 (Monthly)	pH Total suspended solids Turbidity	7.9 9 ND	pH mg/L NTU	The water quality data for the month of February 2018 indicates that there were 2 instances where 20mm or more of rainfall was received at the premises within a 24 hour period
Monitoring Point 10 DW21b	5 March 2018 (Monthly)	pH Total suspended solids Turbidity	ND ND ND	pH mg/L NTU	
Monitoring Point 11 EPL12	5 March 2018 (Monthly)	pH Total suspended solids Turbidity	ND ND ND	pH mg/L NTU	
Monitoring Point 12 EPL11	5 March 2018 (Monthly)	pH Total suspended solids Turbidity	ND ND ND	pH mg/L NTU	
Monitoring Point 18 EPL13	5 March 2018 (Monthly)	pH Total suspended solids Turbidity	6.8 16 10.0	pH mg/L NTU	
Monitoring Point 9 DW20b	26 February 2018 (>20mm)	pH Total suspended solids Turbidity	7.81 8 12.9	pH mg/L NTU	
Monitoring Point 10 DW21b	26 February 2018 (>20mm)	pH Total suspended solids Turbidity	ND ND ND	pH mg/L NTU	
Monitoring Point 11 EPL12	26 February 2018 (>20mm)	pH Total suspended solids Turbidity	ND ND ND	pH mg/L NTU	
Monitoring Point 12 EPL11	26 February 2018 (>20mm)	pH Total suspended solids Turbidity	ND ND ND	pH mg/L NTU	
Monitoring Point 18 EPL13	26 February 2018 (>20mm)	pH Total suspended solids Turbidity	7.62 42 28.6	pH mg/L NTU	
Monitoring Point 9 DW20b	20 February 2018 (>20mm)	pH Total suspended solids Turbidity	6.7 <5 21.7	pH mg/L NTU	
Monitoring Point 10 DW21b	20 February 2018 (>20mm)	pH Total suspended solids Turbidity	ND ND ND	pH mg/L NTU	
Monitoring Point 11 EPL12	20 February 2018 (>20mm)	pH Total suspended solids Turbidity	ND ND ND	pH mg/L NTU	
Monitoring Point 12 EPL11	20 February 2018 (>20mm)	pH Total suspended solids Turbidity	ND ND ND	pH mg/L NTU	
Monitoring Point 18 EPL13	20 February 2018 (>20mm)	pH Total suspended solids Turbidity	ND ND ND	pH mg/L NTU	
Monitoring Point 9 DW20b	31 January 2018	pH Total suspended solids Turbidity	7.3 14 ND	pH mg/L NTU	
Monitoring Point 10 DW21b	31 January 2018	pH Total suspended solids Turbidity	ND ND ND	pH mg/L NTU	
Monitoring Point 11 EPL12	31 January 2018	pH Total suspended solids Turbidity	ND ND ND	pH mg/L NTU	
Monitoring Point 12 EPL11	31 January 2018	pH Total suspended solids Turbidity	ND ND ND	pH mg/L NTU	

Dunmore Lakes Sand Project Environmental Monitoring Report

Location	Date	Pollutant	Measurement	Unit	Comments
Monitoring Point 18 EPL13	31 January 2018	pH Total suspended solids Turbidity	7.8 20 13.4	pH mg/L NTU	
Monitoring Point 9 DW20b	December 2017	pH Total suspended solids Turbidity	7.4 10 ND	pH mg/L NTU	The water quality data for the month of December 2018 indicates that there were no instances where 20mm or more of rainfall was received at the premises within a 24 hour period.
Monitoring Point 10 DW21b	December 2017	pH Total suspended solids Turbidity	ND ND ND	pH mg/L NTU	
Monitoring Point 11 EPL12	December 2017	pH Total suspended solids Turbidity	ND ND ND	pH mg/L NTU	
Monitoring Point 12 EPL11	December 2017	pH Total suspended solids Turbidity	ND ND ND	pH mg/L NTU	
Monitoring Point 18 EPL13	December 2017	pH Total suspended solids Turbidity	7.1 28 15.5	pH mg/L NTU	
Monitoring Point 9 DW20b	18 November 2017	pH Total suspended solids Turbidity	6.6 83 82.2	pH mg/L NTU	
Monitoring Point 10 DW21b	18 November 2017	pH Total suspended solids Turbidity	ND ND ND	pH mg/L NTU	
Monitoring Point 11 EPL12	18 November 2017	pH Total suspended solids Turbidity	ND ND ND	pH mg/L NTU	
Monitoring Point 12 EPL11	18 November 2017	pH Total suspended solids Turbidity	ND ND ND	pH mg/L NTU	
Monitoring Point 18 EPL13	18 November 2017	pH Total suspended solids Turbidity	6.5 91 77.5	pH mg/L NTU	
Monitoring Point 9 DW20b	7 November 2017	pH Total suspended solids Turbidity	ND ND ND	pH mg/L NTU	The water quality data for the month of October 2017 indicates that there was 1 instance where 20mm or more of rainfall was received at the premises within a 24 hour period.
Monitoring Point 10 DW21b	7 November 2017	pH Total suspended solids Turbidity	ND ND ND	pH mg/L NTU	
Monitoring Point 11 EPL12	7 November 2017	pH Total suspended solids Turbidity	ND ND ND	pH mg/L NTU	
Monitoring Point 12 EPL11	7 November 2017	pH Total suspended solids Turbidity	ND ND ND	pH mg/L NTU	
Monitoring Point 18 EPL13	7 November 2017	pH Total suspended solids Turbidity	ND ND ND	pH mg/L NTU	
Monitoring Point 9 DW20b		pH Total suspended solids Turbidity	ND ND ND	pH mg/L NTU	
Monitoring Point 10 DW21b		pH Total suspended solids Turbidity	ND ND ND	pH mg/L NTU	
Monitoring Point 11 EPL12		pH Total suspended solids Turbidity	ND ND ND	pH mg/L NTU	

Dunmore Lakes Sand Project Environmental Monitoring Report

Location	Date	Pollutant	Measurement	Unit	Comments
Monitoring Point 12 EPL11		pH	ND	pH	The water quality data for the month of September 2017 indicates that there was no instance where 20mm or more of rainfall was received at the premises within a 24 hour period.
		Total suspended solids	ND	mg/L	
		Turbidity	ND	NTU	
Monitoring Point 18 EPL13		pH	ND	pH	
		Total suspended solids	ND	mg/L	
		Turbidity	ND	NTU	
Monitoring Point 9 DW20b	September 2017	pH	ND	pH	
		Total Suspended Solids	ND	mg/L	
		Turbidity	ND	NTU	
Monitoring Point 10 DW21b	September 2017	pH	ND	pH	
		Total Suspended Solids	ND	mg/L	
		Turbidity	ND	NTU	
Monitoring Point 11 EPL12	September 2017	pH	ND	pH	
		Total Suspended Solids	ND	mg/L	
		Turbidity	ND	NTU	
Monitoring Point 12 EPL11	September 2017	pH	ND	pH	
		Total Suspended Solids	ND	mg/L	
		Turbidity	ND	NTU	
Monitoring Point 18 EPL13	September 2017	pH	ND	pH	
		Total Suspended Solids	ND	mg/L	
		Turbidity	ND	NTU	
Monitoring Point 9 DW20b	August 2017	pH	7.8	pH	The water quality data for the month of August 2017 indicates that there was one instance where 20mm or more of rainfall was received at the premises within a 24 hour period.
		Total Suspended Solids	14	mg/L	
		Turbidity	6.9	NTU	
Monitoring Point 10 DW21b	August 2017	pH	ND	pH	
		Total Suspended Solids	ND	mg/L	
		Turbidity	ND	NTU	
Monitoring Point 11 EPL12	August 2017	pH	ND	pH	
		Total Suspended Solids	ND	mg/L	
		Turbidity	ND	NTU	
Monitoring Point 12 EPL11	August 2017	pH	ND	pH	
		Total Suspended Solids	ND	mg/L	
		Turbidity	ND	NTU	
Monitoring Point 18 EPL13	August 2017	pH	7.4	pH	
		Total Suspended Solids	23	mg/L	
		Turbidity	21.9	NTU	
Monitoring Point 9 DW20b	July 2017	pH	ND	pH	The water quality data for the month of July 2017 indicates that there were no instances where 20mm or more of rainfall was received at the premises within a 24 hour period.
		Total Suspended Solids	ND	mg/L	
		Turbidity	ND	NTU	
Monitoring Point 10 DW21b	July 2017	pH	ND	pH	
		Total Suspended Solids	ND	mg/L	
		Turbidity	ND	NTU	
Monitoring Point 11 EPL12	July 2017	pH	ND	pH	
		Total Suspended Solids	ND	mg/L	
		Turbidity	ND	NTU	
Monitoring Point 12 EPL11	July 2017	pH	ND	pH	
		Total Suspended Solids	ND	mg/L	
		Turbidity	ND	NTU	
Monitoring Point 18 EPL13	July 2017	pH	ND	pH	
		Total Suspended Solids	ND	mg/L	
		Turbidity	ND	NTU	
Monitoring Point 9 DW20b	7 th June 2017	pH	7.8	pH	The water quality data for the month of June 2017 indicates that there were two instances where 20mm or more of rainfall was received at the premises within a 24 hour period.
	Total Suspended Solids	24	mg/L		
	8 th June 2017	Turbidity	25	NTU	
		pH	8.0	pH	
Total Suspended Solids	28	mg/L			
Turbidity	34	NTU			

Dunmore Lakes Sand Project Environmental Monitoring Report

Location	Date	Pollutant	Measurement	Unit	Comments	
Monitoring Point 10 DW21b	7 th June 2017	pH Total Suspended Solids Turbidity	ND ND ND	pH mg/L NTU		
	8 th June 2017	pH Total Suspended Solids Turbidity	ND ND ND	pH mg/L NTU		
Monitoring Point 11 EPL12	7 th June 2017	pH Total Suspended Solids Turbidity	7.0 313 380	pH mg/L NTU		
	8 th June 2017	pH Total Suspended Solids Turbidity	ND ND ND	pH mg/L NTU		
Monitoring Point 12 EPL11	7 th June 2017	pH Total Suspended Solids Turbidity	7.4 1108 950	pH mg/L NTU		
	8 th June 2017	pH Total Suspended Solids Turbidity	ND ND ND	pH mg/L NTU		
Monitoring Point 18 EPL13	7 th June 2017	pH Total Suspended Solids Turbidity	7.1 26 28	pH mg/L NTU		
	8 th June 2017	pH Total Suspended Solids Turbidity	7.1 26 15	pH mg/L NTU		
Monitoring Point 9 DW20b	20 th May 2017	pH Total Suspended Solids Turbidity	7.5 24 31	pH mg/L NTU		The water quality data for the month of May 2017 indicates that there was one instance where 20mm or more of rainfall was received at the premises within a 24 hour period.
Monitoring Point 10 DW21b	20 th May 2017	pH Total Suspended Solids Turbidity	7.4 25 27	pH mg/L NTU		
Monitoring Point 11 EPL12	20 th May 2017	pH Total Suspended Solids Turbidity	ND ND ND	pH mg/L NTU		
Monitoring Point 12 EPL11	20 th May 2017	pH Total Suspended Solids Turbidity	ND ND ND	pH mg/L NTU		
Monitoring Point 18 EPL13	20 th May 2017	pH Total Suspended Solids Turbidity	7.1 18 18	pH mg/L NTU		
Monitoring Point 9 DW20b	April 2017	pH Total Suspended Solids Turbidity	ND ND ND	pH mg/L NTU	The water quality data for the month of April 2017 indicates that there were no instances where 20mm or more of rainfall was received at the premises within a 24 hour period.	
Monitoring Point 10 DW21b	April 2017	pH Total Suspended Solids Turbidity	ND ND ND	pH mg/L NTU		
Monitoring Point 11 EPL12	April 2017	pH Total Suspended Solids Turbidity	ND ND ND	pH mg/L NTU		
Monitoring Point 12 EPL11	April 2017	pH Total Suspended Solids Turbidity	ND ND ND	pH mg/L NTU		
Monitoring Point 18 EPL13	April 2017	pH Total Suspended Solids Turbidity	ND ND ND	pH mg/L NTU		
Monitoring Point 9 DW20b	3rd March 2017	pH Total Suspended Solids Turbidity	7.9 9.2 22.0	pH mg/L NTU	The water quality data for the month of March 2017 indicates that there were five (5)	

Dunmore Lakes Sand Project Environmental Monitoring Report

Location	Date	Pollutant	Measurement	Unit	Comments
	4th March 2017	pH Total Suspended Solids Turbidity	8.1 9.6 23.0	pH mg/L NTU	instances where 20mm or more of rainfall was received at the premises within a 24 hour period. Monitoring locations are ephemeral water courses with water only present generally following significant rainfall.
	17th March 2017	pH Total Suspended Solids Turbidity	6.7 45.0 58.0	pH mg/L NTU	
	23rd March 2017	pH Total Suspended Solids Turbidity	6.9 15.0 39.0	pH mg/L NTU	
	31st March 2017	pH Total Suspended Solids Turbidity	7.1 16.0 27.0	pH mg/L NTU	
Monitoring Point 10 DW21b	3rd March 2017	pH Total Suspended Solids Turbidity	ND ND ND	pH mg/L NTU	
	4th March 2017	pH Total Suspended Solids Turbidity	ND ND ND	pH mg/L NTU	
	17th March 2017	pH Total Suspended Solids Turbidity	ND ND ND	pH mg/L NTU	
	23rd March 2017	pH Total Suspended Solids Turbidity	ND ND ND	pH mg/L NTU	
	31st March 2017	pH Total Suspended Solids Turbidity	ND ND ND	pH mg/L NTU	
Monitoring Point 11 EPL12	3rd March 2017	pH Total Suspended Solids Turbidity	7.9 2.0 14.0	pH mg/L NTU	
	4th March 2017	pH Total Suspended Solids Turbidity	8.5 1.6 15.2	pH mg/L NTU	
	17th March 2017	pH Total Suspended Solids Turbidity	6.8 84.0 24.0	pH mg/L NTU	
	23rd March 2017	pH Total Suspended Solids Turbidity	6.9 5.2 17.0	pH mg/L NTU	
	31st March 2017	pH Total Suspended Solids Turbidity	6.7 7.6 12.0	pH mg/L NTU	
Monitoring Point 12 EPL11	3rd March 2017	pH Total Suspended Solids Turbidity	8.1 21.0 62.0	pH mg/L NTU	
	4th March 2017	pH Total Suspended Solids Turbidity	8.5 5.6 26	pH mg/L NTU	
	17th March 2017	pH Total Suspended Solids Turbidity	7.2 2.0 58.0	pH mg/L NTU	
	23rd March 2017	pH Total Suspended Solids Turbidity	6.7 4.4 18.0	pH mg/L NTU	
	31st March 2017	pH Total Suspended Solids Turbidity	7.9 9.6 58.0	pH mg/L NTU	

Dunmore Lakes Sand Project Environmental Monitoring Report

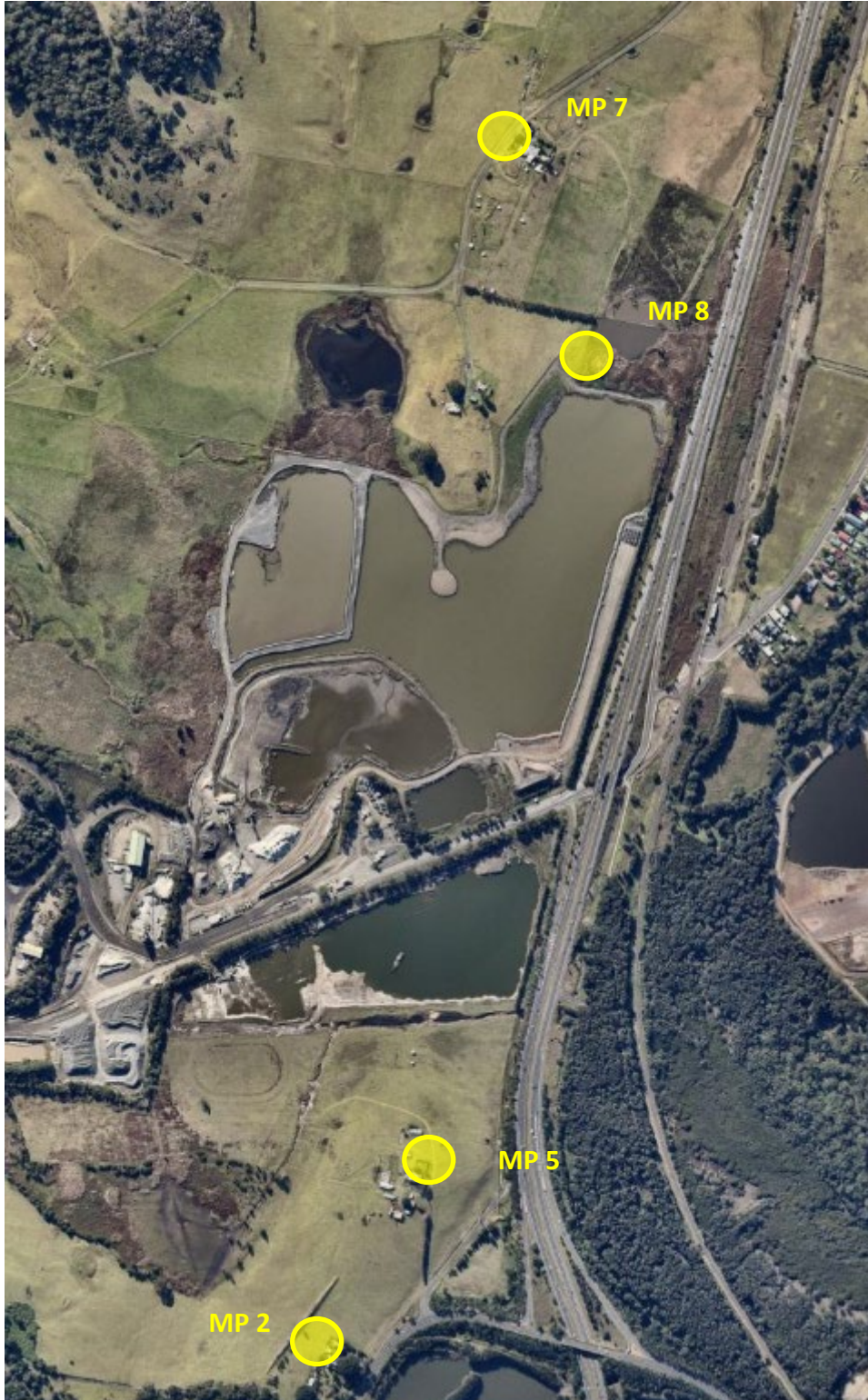
Location	Date	Pollutant	Measurement	Unit	Comments
Monitoring Point 18 EPL13	3rd March 2017	pH	7.9	pH	
		Total Suspended Solids	17.0	mg/L	
		Turbidity	14.0	NTU	
	4th March 2017	pH	8.4	pH	
		Total Suspended Solids	16.0	mg/L	
17th March 2017	Turbidity	27.5	NTU		
	pH	6.7	pH		
23rd March 2017	Total Suspended Solids	10.0	mg/L		
	Turbidity	58.0	NTU		
31st March 2017	pH	7.1	pH		
	Total Suspended Solids	5.2	mg/L		
Monitoring Point 9 DW20b	8th February 2017	Turbidity	27.0	NTU	
		pH	7.45	pH	
26 th February 2017	Total Suspended Solids	5.6	mg/L		
	Turbidity	6.8	NTU		
Monitoring Point 10 DW21b	8th February 2017	pH	8.2	pH	
		Total Suspended Solids	3.6	mg/L	
26 th February 2017	Turbidity	28	NTU		
	pH	ND	pH		
Monitoring Point 10 DW21b	8th February 2017	Total Suspended Solids	ND	mg/L	
		Turbidity	ND	NTU	
26 th February 2017	pH	ND	pH		
	Total Suspended Solids	ND	mg/L		
Monitoring Point 11 EPL12	8th February 2017	Turbidity	ND	NTU	
		pH	6.65	pH	
26 th February 2017	Total Suspended Solids	4.8.	mg/L		
	Turbidity	7.5	NTU		
Monitoring Point 11 EPL12	8th February 2017	pH	ND	pH	
		Total Suspended Solids	ND	mg/L	
26 th February 2017	Turbidity	ND	NTU		
	pH	7.7	pH		
Monitoring Point 12 EPL11	8th February 2017	Total Suspended Solids	9.6	mg/L	
		Turbidity	20	NTU	
26 th February 2017	pH	ND	pH		
	Total Suspended Solids	ND	mg/L		
Monitoring Point 12 EPL11	8th February 2017	Turbidity	ND	NTU	
		pH	6.8	pH	
26 th February 2017	Total Suspended Solids	53	mg/L		
	Turbidity	90	NTU		
Monitoring Point 18 EPL13	8th February 2017	pH	8.00	pH	
		Total Suspended Solids	3.2	mg/L	
26 th February 2017	Turbidity	29.5	NTU		
	Monitoring Point 9 DW20b	January 2017	pH	ND	pH
Monitoring Point 9 DW20b	January 2017	Total Suspended Solids	ND	mg/L	
		Turbidity	ND	NTU	
Monitoring Point 10 DW21b	January 2017	pH	ND	pH	
		Total Suspended Solids	ND	mg/L	
Monitoring Point 10 DW21b	January 2017	Turbidity	ND	NTU	
		pH	ND	pH	
Monitoring Point 11 EPL12	January 2017	Total Suspended Solids	ND	mg/L	
		Turbidity	ND	NTU	
Monitoring Point 11 EPL12	January 2017	pH	ND	pH	
		Total Suspended Solids	ND	mg/L	
Monitoring Point 12 EPL11	January 2017	Turbidity	ND	NTU	
		pH	ND	pH	
Monitoring Point 12 EPL11	January 2017	Total Suspended Solids	ND	mg/L	
		Turbidity	ND	NTU	

Dunmore Lakes Sand Project Environmental Monitoring Report

Location	Date	Pollutant	Measurement	Unit	Comments
Monitoring Point 18 EPL13	January 2017	pH	ND	pH	
		Total Suspended Solids	ND	mg/L	
		Turbidity	ND	NTU	

Dunmore Lakes Sand Project Monitoring Locations.

Deposited Dust Monitoring Locations



Dunmore Lakes Sand Project Monitoring Locations.

Water Quality Monitoring Locations

