

Boral Concrete Sydney Metro

Supplying materials for a strong and growing community

June 2019

After a lengthy journey to approval, we'll soon start work on building our new concrete plant in Greendale Road, Bringelly. We're aware some local concerns remain about our project - this newsletter aims to help you to understand what's coming up for the site.

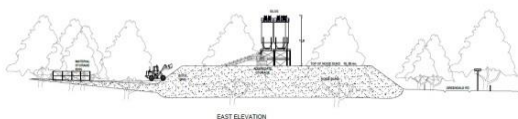
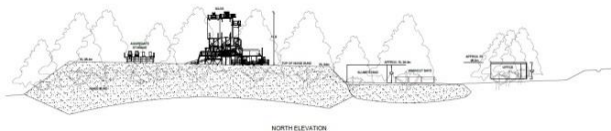
Connect with **Boral Bringelly**

Project Manager: Richard FitzGibbon
Phone: 0401 896 590
Email: feedback@boral.com.au
Construction hours: 7am-6pm Mon-Fri
8am-1pm Sat

Creating a new concrete plant

We're expecting to 'turn the first sod' on the concrete plant's construction during the third 'quarter' of this year once the last documents and reports for the works have been organised and accepted.

The first activity locals will see will be the establishment of a **driveway** off Greendale Road at the access point into the land. Once complete, we'll place a **site office** and **amenities** for our workforce before major **earthworks** begin.



These will start with the **removal** and **stockpiling** of **topsoil** before we begin to 'cut into' the hillside, providing the level upon which the plant will stand.

The earth we remove will be shaped into **bunds** for the front and side of the site. When completed, the bunds will stand **five metres** high and be vegetated. They will serve an important role in the **visual appearance** of the plant, and in managing **noise**.



This phase of work will also see the building of a **dam** which will help supply the site's water needs for both **production** and **environmental management**.

In our experience this part of the program, expected to take **up to eight weeks**, will present the highest risk in terms of noise, dust, moving equipment and traffic for the whole project.

Once earthworks are complete, we'll then start pouring the concrete needed for the new plant's **footings**, as well as the '**hard stand**' areas which will cover the majority of the operation.



The new plant's **silos, stands, conveyors** and **pipng** will then begin to arrive and be stood in place using cranes and cherrypickers.

At this time worker numbers on the project will peak, with **up to 20** being on site including concreters, electricians, plumbers, fitters and crane drivers.

Concrete pouring will generate what we expect to be the busiest days in terms of heavy vehicle deliveries. **Up to 25 agitators** can be expected on a '**pour day**', likely every **third** day during this work. We'll notify neighbours before the pour period begins.



More information? www.boral.com.au/bringelly.

Like us on **Facebook** – **@Boral Australia**.



For about a **fortnight** during this period, there'll also be around **20** semi trailer loads of structural steel taken in at the site.

Putting the plant together is expected to take **12 weeks**. Once it's in place, we'll apply the finishing touches such as landscaping, and by the first 'quarter' of **2020**, we'll have a functioning concrete plant ready to supply its first material to local customers.



Once the gates open...

As communicated during the planning process, our proposing of a new plant at Bringelly was in recognition that the area will rapidly change across the next decade in line with State Government plans for the greater Sydney metropolitan area.

The infrastructure this change will bring, such as **new roads**, the **Western Sydney Airport**, a potential **railway** and other **public utilities**, will need to be supported with an available source of concrete.

We understand, however, that the opportunity to supply that material comes with an obligation to again be a responsible citizen of Bringelly, as we were when we solely operated the **local brickworks** until **2015**.

Our planning consent reflects that responsibility in a number of ways, specifically addressing community concerns raised during the planning approval process.

Aesthetics: The plant has been designed to **limit** external views to the very top of the plant's silos. While some trees will be removed, most will be retained and a **five metre bund** built along the front

and side of the plant. The 'cutting into' the hill will largely **lower** the plant out of view. The plant will be painted in a **colour** which blends with the surrounds.

Noise: The noisiest part of the concrete manufacturing process is **slumping** - the mixing of **aggregates, cement** and **water** in the **agitators**. The slumping stand will be **enclosed** to reduce this noise, with additional **acoustic curtains** also fitted. The **site bunds** will also play a role in deflecting noise away from neighbouring properties.

Dust: Our plant will use a **fully enclosed, air pressure driven system** to transfer cement from tankers to the site silos for manufacturing. Any dust which might therefore generate from our site will likely be **nuisance emissions** from aggregates and other materials, or dust from surrounding rural properties. In line with **industry best practice**, we'll be using **water sprays**, a **street sweeper** on the hard stand areas, **enclosure** of known dust emitting points, and ensuring loads are **covered** as preventing mitigations.

Traffic: **Boral fleet vehicles** are fitted with **electronic monitoring** which provides an immediate alert to supervisors if they are driven inappropriately, such as if they are speeding. Drivers are given a **site specific orientation** so local conditions are clearly spelled out – an example at Bringelly will be the need to be aware of the **primary school** near the site. A **Code of Conduct** forms part of our drivers' employment conditions, with breaches attracting disciplinary action including **dismissal**. The site's conditions also include **limits on truck movements** per hour each day, with **no** deliveries of materials after **6pm** on any day.



Working hard to fit back in...

*Through construction, and eventual operation, we'll have **plans** in place to guide us in operating at the site with minimal effect on neighbours.*

*To ensure we're doing this, it'll be **vitaly important** we receive **timely feedback** from neighbours with regard to their experience of the works from their premises. Prompt contact will allow us to quickly adapt our activities and alleviate issues that arise.*

*If you have any questions, comments or concerns, please call our **Project Manager** on **0401 896 590**, or **Stakeholder Manager** on **0401 894 097**. You can also email feedback@boral.com.au.*

More information? www.boral.com.au/bringelly.

Like us on **Facebook** – **@Boral Australia**.

