

# Surface Coat

**ASPHALT SPECIALITIES**

2018 EDITION



Giving pavements the right treatment.

## Excellent Performance and Colour Meet Budget

Boral specialty surfacing systems enhance the appearance of various types of asphalt and concrete pavements. Possessing skid resistant properties for both wet and dry conditions, Boral Surface Coat provides a suitable method of pavement colouring and rejuvenation as compared to other alternatives like coloured paving that is usually more expensive. Due to its quick-drying properties, the applied areas can be trafficked as little as one hour after application (dependant on climate and trafficking conditions).

## Boral Surface Coat

Boral Surface Coat is a blend of bitumen emulsion, fillers and polymers available in a range of colours. In providing a quality coloured surface, Boral Surface Coat is the ideal product to beautify and protect asphalt/concrete pavements that are old, rough, stained, or generally substandard.

Boral Surface Coat is specifically designed for applications such as:

- Footpaths
- Walkways
- Sporting Courts
- Architectural Design
- Feature Areas
- Driveways
- Delineation Zones

Boral has over 50 years experience in the pavement industry. With a vast network of industry knowledge and technical skill, you can be assured of product quality when choosing Boral.



# Surface Coat

## ASPHALT SPECIALITIES

### Preparation

New asphalt surfaces must cure for a minimum 30 days prior to Surface Coat installation (dependant on climate & site conditions), and longer if possible for best results. Concrete surfaces require a curing time of at least 14 days.

Any surface cracks should be repaired using a bituminous cracksealant at least 24 hours before Surface Coat installation.

The surface should be free from surface contaminants & soiling (pavements should be sufficiently swept or blown down prior to installation).

- If the pavement requires hosing or high-pressure wash, allow sufficient drying time of at least 24 hours. The surface must be dry during installation.
- If coating over an existing painted/coated system, remove any flaking or unstable material prior to overlay.
- Do not apply if rain is expected within 6 hours.
- Air temperature should be between 10°C and 30°C for best results.
- Surface Coat can be applied with a flexible rubber squeegee, hand roller, or soft broom. Each will give a different surface texture.
- The area of application should be bordered with a pavement tape (such as masking tape) to leave a neat edge.
- Thoroughly stir all drums prior to use.

- Boral Surface Coat can be applied in multiple coats if required. For a single coat, Surface Coat is usually applied between 0.6–1.0 litres per square metre. A two-coat system will use (in total) between 1.0-1.5 litres per square metre. Spread rates are dependant on the existing surface texture, while multiple coats will enhance the overall finish of the pavement.

### Application

- When using a rubber squeegee or soft broom Surface Coat should be poured along the direction of application. Pull (not push) the squeegee/broom along the “run” at an angle which allows excess material to flow onto the untreated surface. DO NOT lift the squeegee blade/broom off the surface until all Surface Coat is dragged out. Then pour Surface Coat in the same manner and continue.
- To remove any marks left by the squeegee blade, lightly backroll with a hand roller. Please note that this will create a slightly different texture, and so for uniformity it is best to backroll the whole surface.
- When applying with a hand roller, pour the Surface Coat into a paint tray. Coat the roller head with Surface Coat and apply in a “backwards and forwards” motion, ensuring an even coverage over the surface.
- If the product appears to be “dragging” (this may occur when the surface temperature is quite hot), apply a fine mist

of water over the pavement to be covered. It is best to avoid placing in hot conditions.

- Under general conditions (20°C in direct sunlight) the system will be touch-dry in 1-2 hours. This may be longer should site conditions vary.
- If placing Surface Coat inside buildings, fans or heaters can be used to accelerate the drying process.
- Allow a minimum of 4 hours prior to opening the system to pedestrian traffic, and a minimum 24 hours before any vehicle access. These times may vary according to site conditions and drying times.

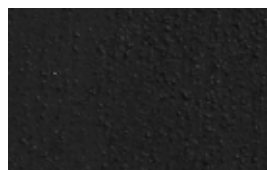
### Boral Surface Coat is:

- Conforming to AS/NZS 4586 –Pedestrian Slip Resistance
- A waterproof pavement sealer
- A primer for acrylic painted systems
- Applied in single or multiple coats when required.
- Available in the following range of colours

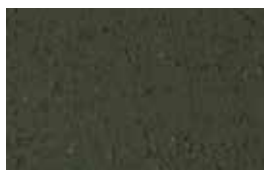
### Available in the following states:

- Victoria
- South Australia
- Western Australia
- Queensland

Surface Coat is available in 20 litre and 205 litre drums.



Black



Green



Grey



Brown



Red

### Boral website:

Visit the Boral website for the full range of Boral products: [www.boral.com.au](http://www.boral.com.au)

### Asphalt information:

For asphalt news and information visit: [www.boral.com.au/asphalt](http://www.boral.com.au/asphalt)

For asphalt locations around Australia go to: [www.boral.com.au/locations](http://www.boral.com.au/locations)

### Contact us:

At Boral we are committed to excellence in service so for further information please contact:

NSW (02) 8801 2000  
VIC 1300 132 964  
QLD (07) 3268 8011  
SA (08) 8425 0400  
WA (08) 9458 0400

or visit: [www.boral.com.au/contact](http://www.boral.com.au/contact)

Product images are indicative only, and should be used as a guide.  
Copyright Boral Construction Materials Limited ACN 000 614 826 – all rights reserved 2011–2018.

**SDS:** A Safety Data Sheet is available upon request by contacting Boral Asphalt customer service.

Images in this brochure are only representative of Boral products and the appearance and effect that may be achieved by their use. Particular projects may require the use of specific construction techniques or products. Boral recommends obtaining technical advice prior to construction. Boral, the Boral logo, boral.com.au, Build something great are trade marks or registered trade marks of Boral Limited in Australia. ©Copyright Boral Construction Materials Limited ACN 000 614 826 – all rights reserved 2018. BCC 15510\_1/18 BLA

