



Building  
something  
great

# Environmental Monitoring Report

## Real-time Air Quality monitoring

---

# Dunmore Quarry

April 2026



**Building  
something  
great**

This monitoring report is to satisfy the requirements of Section 66 (6) of the Protection of the Environment and Operations Act 1997, to make available, within 14 days of request, any monitoring data that relates to pollution under an Environment Protection Licence.

The monitoring of pollutants provided in this report is undertaken as per the requirements of Environment Protection Licence 77 (EPL 77 – Boral Dunmore Quarry)

This report provides environmental monitoring data for Dunmore Quarry for August 2025 - April 2026.

Dunmore Quarry Information	
Premise Details	Boral – Dunmore Quarry
Address	Princes Highway, Dunmore NSW, 2529
Licensee	Boral Resources (NSW) PTY LTD
EPL N°	77
EPL Location	<a href="https://apps.epa.nsw.gov.au/prpoeoapp/Detail.aspx?instid=77&amp;id=77&amp;option=licence&amp;searchrange=licence&amp;range=POEO%20licence&amp;prp=no&amp;status=Issued">https://apps.epa.nsw.gov.au/prpoeoapp/Detail.aspx?instid=77&amp;id=77&amp;option=licence&amp;searchrange=licence&amp;range=POEO%20licence&amp;prp=no&amp;status=Issued</a>

Real time air quality monitoring commenced at Dunmore Quarry in September 2025 as part of an agreed Pollution reduction Program with EPA.

Monitoring data in this report therefore relates to the monitoring undertaken in the reporting period for Real-time Air Quality Monitoring.



**Building something great**

## Realtime Air Quality Monitoring

Realtime air quality monitoring is conducted as per condition M2.2 of EPL 77. The real time air quality monitoring results for the reporting period is summarised below.

Sample Period: March 2026

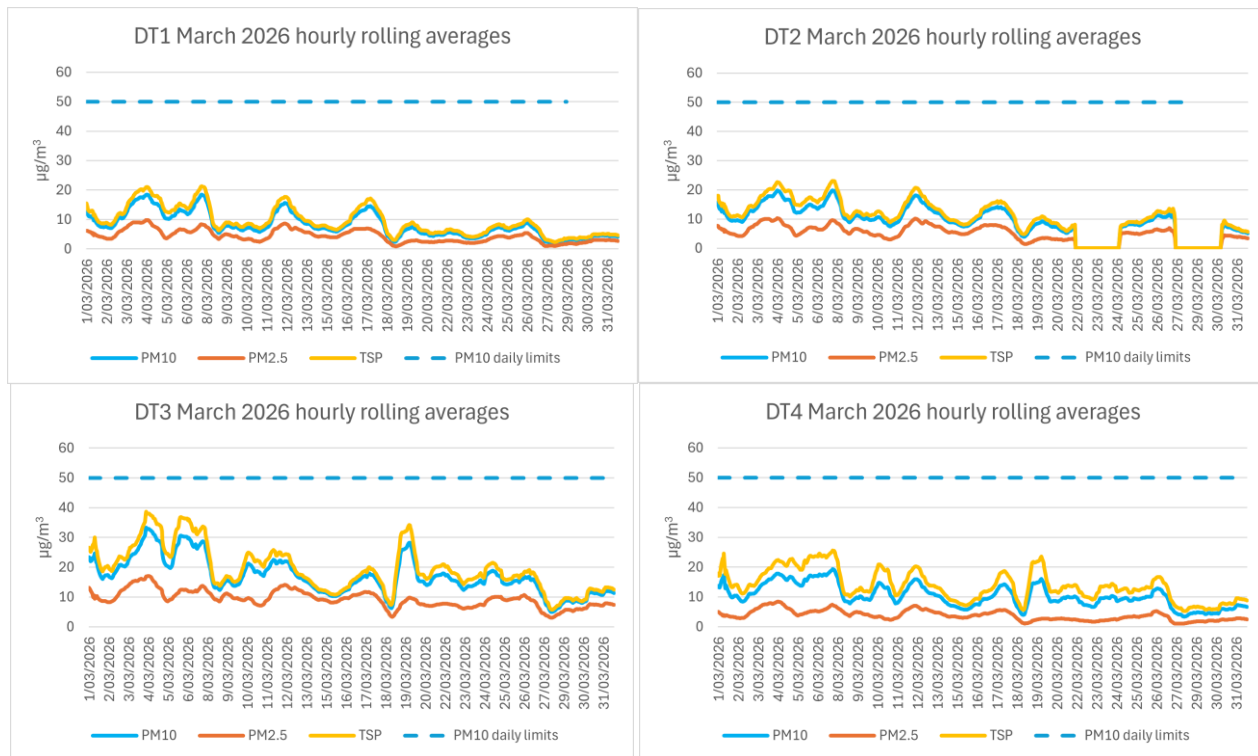
Licensee: Dunmore Quarry

Licensee Address: Princes Hwy, Dunmore NSW 2529

EPL No: 77

**Qualifications related to real-time air quality monitoring:** Air Emissions Monitoring – Continuous Ambient Dust

Note: PMT represents TSP (Total Suspended Particulates)



### Results:

DT	Month	Daily averages			Daily limit	Annual limit			Comments
		PM10	PM2.5	TSP		PM10	PM2.5	TSP	
		µg/m <sup>3</sup>	µg/m <sup>3</sup>	µg/m <sup>3</sup>	µg/m <sup>3</sup>	µg/m <sup>3</sup>	µg/m <sup>3</sup>	µg/m <sup>3</sup>	
DT1	Mar-26	4.31	8.02	9.27	50	25	8	90	
DT2	Mar-26	5.89	11.09	12.70	50	25	8	90	Solar power system failure led to missing data between 22-24 and 27-30 March
DT3	Mar-26	9.30	16.85	19.25	50	25	8	90	
DT4	Mar-26	3.77	10.26	13.68	50	25	8	90	



**Building  
something  
great**

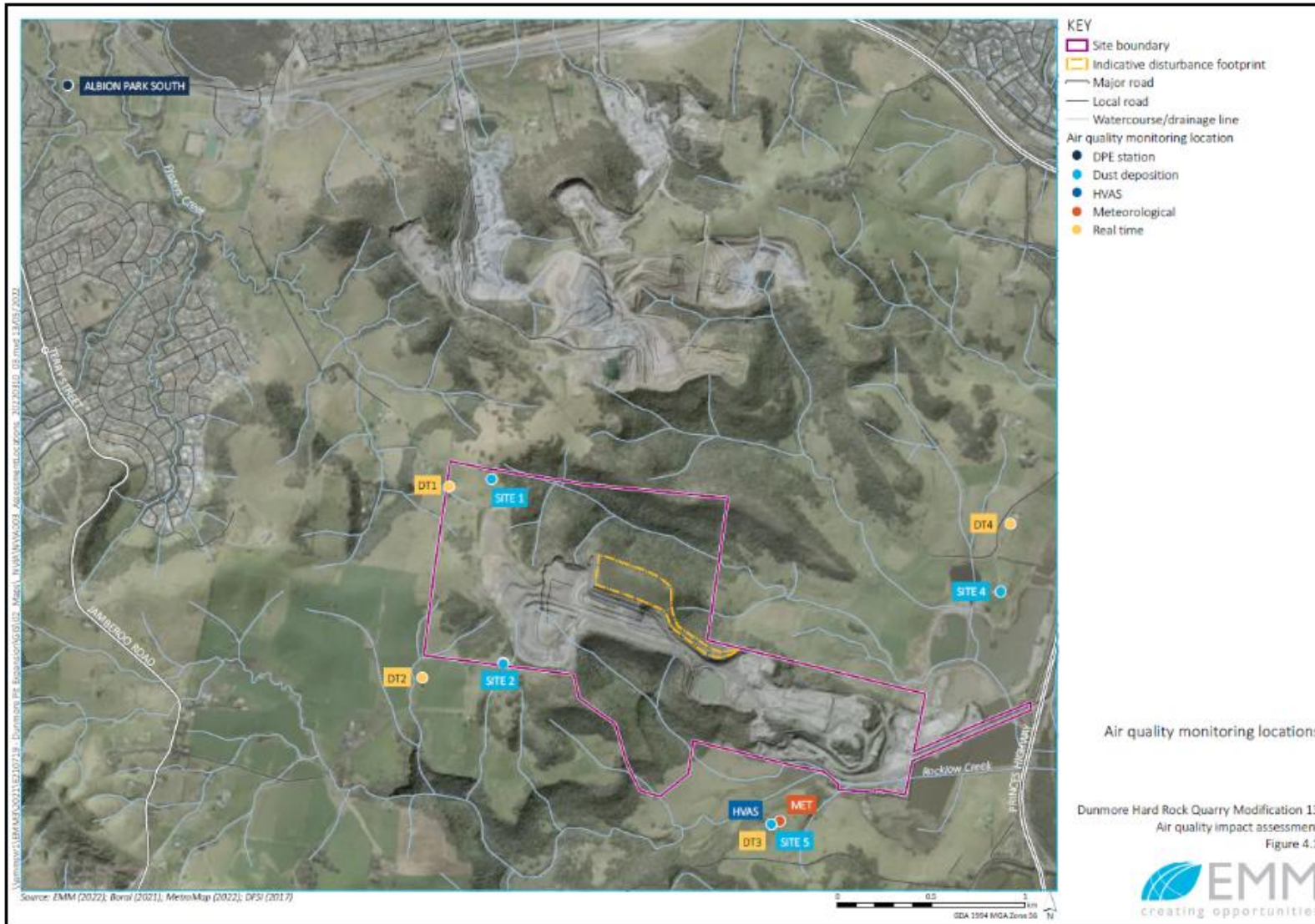
**Historical Data**

DMP	Month	Daily averages			Daily limit	Annual limit			Comments
		PM10	PM2.5	TSP	PM10	PM10	PM2.5	TSP	
		µg/m <sup>3</sup>	µg/m <sup>3</sup>	µg/m <sup>3</sup>	µg/m <sup>3</sup>	µg/m <sup>3</sup>	µg/m <sup>3</sup>	µg/m <sup>3</sup>	
DT1	Feb-26	10.27	6.31	11.57	50	25	8	90	
DT2	Feb-26	12.24	7.53	13.61	50	25	8	90	
DT3	Feb-26	18.19	11.73	20.29	50	25	8	90	
DT4	Feb-26	12.10	5.60	15.45	50	25	8	90	
DMP1	Jan-26	18.88	6.57	20.04	50	25	8	90	
DMP2	Jan-26	4.12	2.75	4.31	50	25	8	90	
DMP3	Jan-26	34.34	10.22	36.63	50	25	8	90	
DMP4	Jan-26	3.86	1.66	4.10	50	25	8	90	
DMP1	Dec-25	22.95	7.74	24.38	50	25	8	90	
DMP2	Dec-25	2.82	1.49	2.95	50	25	8	90	
DMP3	Dec-25	17.91	6.57	18.30	50	25	8	90	
DMP4	Dec-25	105.12	1.83	14.32	50	25	8	90	Issues with data synchronization led to very high values being recorded.
DMP1	Nov-25	17.31	4.85	19.11	50	25	8	90	
DMP2	Nov-25	2.85	1.59	2.95	50	25	8	90	
DMP3	Nov-25	28.63	7.50	31.31	50	25	8	90	
DMP4	Nov-25	3.85	1.07	4.07	50	25	8	90	
DMP1	Oct-25	16.93	5.32	18.58	50	25	8	90	
DMP2	Oct-25	2.45	1.37	2.59	50	25	8	90	
DMP3	Oct-25	24.72	7.62	26.80	50	25	8	90	
DMP4	Oct-25	5.05	1.53	5.28	50	25	8	90	
DMP1	Sep-25	11.50	3.23	12.79	50	25	8	90	
DMP2	Sep-25	0.20	0.13	0.20	50	25	8	90	Unit online but not functioning properly (3 – 29 Sept)
DMP3	Sep-25	19.71	6.33	21.57	50	25	8	90	
DMP4	Sep-25	2.43	0.51	2.61	50	25	8	90	
DMP1	Aug-25	6.79	2.17	7.28	50	25	8	90	
DMP2	Aug-25	0.01	0.00	0.01	50	25	8	90	
DMP3	Aug-25	12.01	3.99	12.82	50	25	8	90	
DMP4	Aug-25	1.32	0.30	1.39	50	25	8	90	



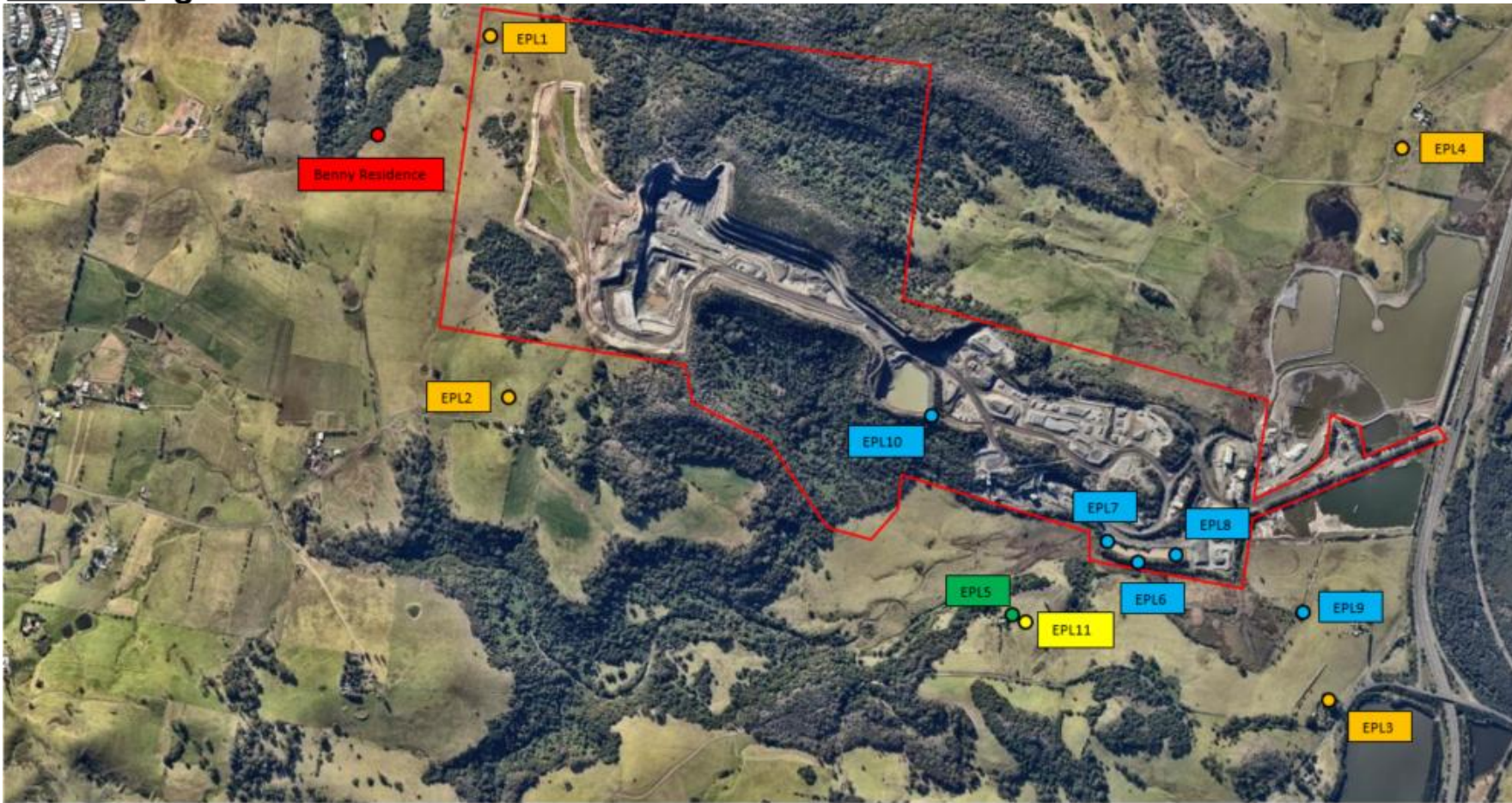
Building something great

### Dunmore Quarry Monitoring Locations.





Building something great



LEGEND

- Site Boundary
- Water Discharge Monitoring Point
- Deposited Dust Monitoring Point
- Weather Analysis Monitoring Point
- Blast Monitoring Point
- High Volume Air Sampling Point