

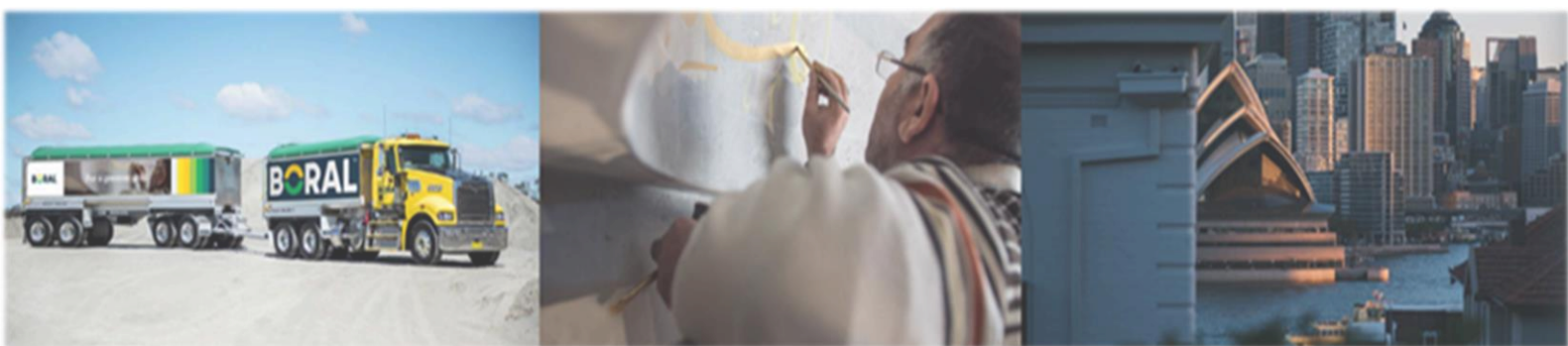


Environmental Monitoring Report

Dunmore Quarry

August 2024

Date Published: November 2024



Dunmore Quarry Environmental Monitoring Report

This monitoring report is to satisfy the requirements of Section 66 (6) of the Protection of the Environment and Operations Act 1997, to make available, within 14 days of request, any monitoring data that relates to pollution under an Environment Protection Licence.

The monitoring of pollutants provided in this report is undertaken as per the requirements of Environment Protection Licence 77 (EPL 77 – Boral Dunmore Quarry)

This report provides environmental monitoring data for Dunmore Quarry for the period January 2020 to November 2024.

| Dunmore Quarry Information | |
|----------------------------|---|
| Premise Details | Boral – Dunmore Quarry |
| Address | Princes Highway, Dunmore NSW, 2529 |
| Licensee | Boral Resources (NSW) PTY LTD |
| EPL N ^o | 77 |
| EPL Location | https://apps.epa.nsw.gov.au/prpoeoapp/Detail.aspx?instid=77&id=77&option=licence&searchrange=licence&range=POEO%20licence&prp=no&status=Issued |

Monitoring data in this report relates to the monitoring undertaken in the reporting period for Deposited Dust.

Dunmore Quarry Environmental Monitoring Report

Air Quality

Air Quality Monitoring is conducted as per condition M2.2 of EPL 77. The air quality results for the reporting period are tabled below.

Deposited Dust

Deposited Dust (g/m²/month) results for the reporting period:

Sample Period: August 2024
 Date received: 13/09/2024
 Licensee: Dunmore Quarry
 Licensee Address: Princes Hwy, Dunmore NSW 2529
 EPL No: 77

Qualifications related to Dust

Air Emissions Monitoring - Dust Deposition Gauge

| Location | Monitoring Frequency | Pollutant | Measurement | Unit | Comments |
|--------------------------------|----------------------|------------------|-------------|-------------------------|----------|
| Monitoring Point 1 (Site 1A) | August Monthly | Insoluble Solids | 0.19 | g/m ² /month | |
| | | Ash | 0.03 | g/m ² /month | |
| | | Soluble Matter | 0.16 | g/m ² /month | |
| | | Total Solids | 0.80 | g/m ² /month | |
| Monitoring Point 2 (Site 2A) | August Monthly | Insoluble Solids | 1.17 | g/m ² /month | |
| | | Ash | 0.60 | g/m ² /month | |
| | | Soluble Matter | 0.57 | g/m ² /month | |
| | | Total Solids | 3.67 | g/m ² /month | |
| Monitoring Point 3 (Site DD2) | August Monthly | Insoluble Solids | 1.23 | g/m ² /month | |
| | | Ash | 0.53 | g/m ² /month | |
| | | Soluble Matter | 0.70 | g/m ² /month | |
| | | Total Solids | 2.26 | g/m ² /month | |
| Monitoring Point 4 (Site DD10) | August Monthly | Insoluble Solids | 1.46 | g/m ² /month | |
| | | Ash | 0.97 | g/m ² /month | |
| | | Soluble Matter | 0.49 | g/m ² /month | |
| | | Total Solids | 3.32 | g/m ² /month | |

Dunmore Quarry Environmental Monitoring Report

Historical Data

| Location | Date Received | Pollutant | Measurement | Unit | Comments |
|--------------------------------|---------------|------------------|-------------|-------------------------|----------|
| July 2024 | | | | | |
| Monitoring Point 1 (Site 1A) | 28/08/2024 | Insoluble Solids | 1.01 | g/m ² /month | |
| | | Ash | 0.49 | g/m ² /month | |
| | | Soluble Matter | 0.52 | g/m ² /month | |
| | | Total Solids | 1.37 | g/m ² /month | |
| Monitoring Point 2 (Site 2A) | | Insoluble Solids | 1.18 | g/m ² /month | |
| | | Ash | 0.47 | g/m ² /month | |
| | | Soluble Matter | 0.71 | g/m ² /month | |
| | | Total Solids | 1.51 | g/m ² /month | |
| Monitoring Point 3 (Site DD2) | | Insoluble Solids | 0.91 | g/m ² /month | |
| | | Ash | 0.50 | g/m ² /month | |
| | | Soluble Matter | 0.41 | g/m ² /month | |
| | | Total Solids | 2.26 | g/m ² /month | |
| Monitoring Point 4 (Site DD10) | | Insoluble Solids | 0.79 | g/m ² /month | |
| | | Ash | 0.54 | g/m ² /month | |
| | | Soluble Matter | 0.25 | g/m ² /month | |
| | | Total Solids | 1.19 | g/m ² /month | |
| June 2024 | | | | | |
| Monitoring Point 1 (Site 1A) | 23/07/2024 | Insoluble Solids | 0.99 | g/m ² /month | |
| | | Ash | 0.72 | g/m ² /month | |
| | | Soluble Matter | 0.27 | g/m ² /month | |
| | | Total Solids | 1.14 | g/m ² /month | |
| Monitoring Point 2 (Site 2A) | | Insoluble Solids | 1.23 | g/m ² /month | |
| | | Ash | 0.42 | g/m ² /month | |
| | | Soluble Matter | 0.81 | g/m ² /month | |
| | | Total Solids | 1.39 | g/m ² /month | |
| Monitoring Point 3 (Site DD2) | | Insoluble Solids | 0.28 | g/m ² /month | |
| | | Ash | 0.22 | g/m ² /month | |
| | | Soluble Matter | 0.06 | g/m ² /month | |
| | | Total Solids | 1.38 | g/m ² /month | |
| Monitoring Point 4 (Site DD10) | | Insoluble Solids | 0.57 | g/m ² /month | |
| | | Ash | 0.32 | g/m ² /month | |
| | | Soluble Matter | 0.25 | g/m ² /month | |
| | | Total Solids | 1.71 | g/m ² /month | |
| May 2024 | | | | | |
| Monitoring Point 1 (Site 1A) | 27/06/2024 | Insoluble Solids | ND | g/m ² /month | |
| | | Ash | ND | g/m ² /month | |
| | | Soluble Matter | ND | g/m ² /month | |
| | | Total Solids | ND | g/m ² /month | |
| Monitoring Point 2 (Site 2A) | | Insoluble Solids | 0.75 | g/m ² /month | |
| | | Ash | 0.60 | g/m ² /month | |
| | | Soluble Matter | 0.15 | g/m ² /month | |
| | | Total Solids | 0.91 | g/m ² /month | |
| Monitoring Point 3 (Site DD2) | | Insoluble Solids | 0.20 | g/m ² /month | |
| | | Ash | 0.09 | g/m ² /month | |
| | | Soluble Matter | 0.11 | g/m ² /month | |
| | | Total Solids | 1.30 | g/m ² /month | |
| Monitoring Point 4 (Site DD10) | | Insoluble Solids | 3.59 | g/m ² /month | |
| | | Ash | 0.02 | g/m ² /month | |
| | | Soluble Matter | 3.57 | g/m ² /month | |
| | | Total Solids | 3.91 | g/m ² /month | |
| April 2024 | | | | | |
| | 31/05/2024 | Insoluble Solids | 1.76 | g/m ² /month | |

Dunmore Quarry Environmental Monitoring Report

| | | | | |
|--------------------------------|------------|------------------|------|-------------------------|
| Monitoring Point 1 (Site 1A) | | Ash | 0.50 | g/m ² /month |
| | | Soluble Matter | 1.26 | g/m ² /month |
| | | Total Solids | 3.37 | g/m ² /month |
| Monitoring Point 2 (Site 2A) | | Insoluble Solids | 1.93 | g/m ² /month |
| | | Ash | 0.48 | g/m ² /month |
| | | Soluble Matter | 1.45 | g/m ² /month |
| Monitoring Point 3 (Site DD2) | | Total Solids | 2.91 | g/m ² /month |
| | | Insoluble Solids | 1.51 | g/m ² /month |
| | | Ash | 0.23 | g/m ² /month |
| Monitoring Point 4 (Site DD10) | | Soluble Matter | 1.28 | g/m ² /month |
| | | Total Solids | 3.27 | g/m ² /month |
| | | Insoluble Solids | 1.86 | g/m ² /month |
| | | Ash | 0.57 | g/m ² /month |
| | | Soluble Matter | 1.29 | g/m ² /month |
| | | Total Solids | 3.08 | g/m ² /month |
| March 2024 | | | | |
| Monitoring Point 1 (Site 1A) | 01/05/2024 | Insoluble Solids | 0.87 | g/m ² /month |
| | | Ash | 0.65 | g/m ² /month |
| | | Soluble Matter | 0.70 | g/m ² /month |
| | | Total Solids | 1.56 | g/m ² /month |
| Monitoring Point 2 (Site 2A) | | Insoluble Solids | 0.52 | g/m ² /month |
| | | Ash | 0.43 | g/m ² /month |
| | | Soluble Matter | 0.04 | g/m ² /month |
| Monitoring Point 3 (Site DD2) | | Total Solids | 0.55 | g/m ² /month |
| | | Insoluble Solids | 0.88 | g/m ² /month |
| | | Ash | 0.61 | g/m ² /month |
| Monitoring Point 4 (Site DD10) | | Soluble Matter | 0.41 | g/m ² /month |
| | | Total Solids | 1.29 | g/m ² /month |
| | | Insoluble Solids | 2.88 | g/m ² /month |
| | | Ash | 1.25 | g/m ² /month |
| | | Soluble Matter | 2.63 | g/m ² /month |
| | | Total Solids | 5.52 | g/m ² /month |
| February 2024 | | | | |
| Monitoring Point 1 (Site 1A) | 4/3/2024 | Insoluble Solids | 2.97 | g/m ² /month |
| | | Ash | 1.84 | g/m ² /month |
| | | Soluble Matter | 1.76 | g/m ² /month |
| | | Total Solids | 4.73 | g/m ² /month |
| Monitoring Point 2 (Site 2A) | | Insoluble Solids | 1.82 | g/m ² /month |
| | | Ash | 0.89 | g/m ² /month |
| | | Soluble Matter | 2.28 | g/m ² /month |
| Monitoring Point 3 (Site DD2) | | Total Solids | 4.10 | g/m ² /month |
| | | Insoluble Solids | 2.12 | g/m ² /month |
| | | Ash | 1.34 | g/m ² /month |
| Monitoring Point 4 (Site DD10) | | Soluble Matter | 0.84 | g/m ² /month |
| | | Total Solids | 2.96 | g/m ² /month |
| | | Insoluble Solids | 2.30 | g/m ² /month |
| | | Ash | 1.43 | g/m ² /month |
| | | Soluble Matter | 0.64 | g/m ² /month |
| | | Total Solids | 2.94 | g/m ² /month |
| January 2024 | | | | |
| Monitoring Point 1 (Site 1A) | 29/2/2024 | Insoluble Solids | 3.26 | g/m ² /month |
| | | Ash | 1.51 | g/m ² /month |
| | | Soluble Matter | 4.30 | g/m ² /month |
| | | Total Solids | 7.56 | g/m ² /month |
| Monitoring Point 2 (Site 2A) | | Insoluble Solids | 2.08 | g/m ² /month |
| | | Ash | 1.66 | g/m ² /month |

Dunmore Quarry Environmental Monitoring Report

| | | | | |
|--------------------------------|------------|------------------|-------|-------------------------|
| | | Soluble Matter | 4.61 | g/m ² /month |
| | | Total Solids | 6.69 | g/m ² /month |
| Monitoring Point 3 (Site DD2) | | Insoluble Solids | 1.12 | g/m ² /month |
| | | Ash | 1.05 | g/m ² /month |
| | | Soluble Matter | 5.48 | g/m ² /month |
| | | Total Solids | 6.60 | g/m ² /month |
| Monitoring Point 4 (Site DD10) | | Insoluble Solids | 1.38 | g/m ² /month |
| | | Ash | 1.17 | g/m ² /month |
| | | Soluble Matter | 4.48 | g/m ² /month |
| | | Total Solids | 5.86 | g/m ² /month |
| December 2023 | | | | |
| Monitoring Point 1 (Site 1A) | 7/02/2024 | Insoluble Solids | 5.54 | g/m ² /month |
| | | Ash | 1.58 | g/m ² /month |
| | | Soluble Matter | 0.33 | g/m ² /month |
| | | Total Solids | 5.87 | g/m ² /month |
| Monitoring Point 2 (Site 2A) | | Insoluble Solids | 2.25 | g/m ² /month |
| | | Ash | 0.94 | g/m ² /month |
| | | Soluble Matter | 13.48 | g/m ² /month |
| | | Total Solids | 15.73 | g/m ² /month |
| Monitoring Point 3 (Site DD2) | | Insoluble Solids | 5.80 | g/m ² /month |
| | | Ash | 1.60 | g/m ² /month |
| | | Soluble Matter | 1.12 | g/m ² /month |
| | | Total Solids | 6.92 | g/m ² /month |
| Monitoring Point 4 (Site DD10) | | Insoluble Solids | 3.15 | g/m ² /month |
| | | Ash | 0.46 | g/m ² /month |
| | | Soluble Matter | 0.85 | g/m ² /month |
| | | Total Solids | 4.01 | g/m ² /month |
| November 2023 | | | | |
| Monitoring Point 1 (Site 1A) | 10/01/2024 | Insoluble Solids | 2.46 | g/m ² /month |
| | | Ash | 0.35 | g/m ² /month |
| | | Soluble Matter | 1.35 | g/m ² /month |
| | | Total Solids | 3.81 | g/m ² /month |
| Monitoring Point 2 (Site 2A) | | Insoluble Solids | 0.39 | g/m ² /month |
| | | Ash | 0.24 | g/m ² /month |
| | | Soluble Matter | 0.88 | g/m ² /month |
| | | Total Solids | 1.26 | g/m ² /month |
| Monitoring Point 3 (Site DD2) | | Insoluble Solids | 1.78 | g/m ² /month |
| | | Ash | 0.96 | g/m ² /month |
| | | Soluble Matter | 0.72 | g/m ² /month |
| | | Total Solids | 2.50 | g/m ² /month |
| Monitoring Point 4 (Site DD10) | | Insoluble Solids | 0.81 | g/m ² /month |
| | | Ash | 0.33 | g/m ² /month |
| | | Soluble Matter | 0.35 | g/m ² /month |
| | | Total Solids | 1.16 | g/m ² /month |
| October 2023 | | | | |
| Monitoring Point 1 (Site 1A) | 11/12/2023 | Insoluble Solids | 1.56 | g/m ² /month |
| | | Ash | 0.84 | g/m ² /month |
| | | Soluble Matter | 1.16 | g/m ² /month |
| | | Total Solids | 2.72 | g/m ² /month |
| Monitoring Point 2 (Site 2A) | | Insoluble Solids | 0.90 | g/m ² /month |
| | | Ash | 0.24 | g/m ² /month |
| | | Soluble Matter | 0.91 | g/m ² /month |
| | | Total Solids | 1.81 | g/m ² /month |
| Monitoring Point 3 (Site DD2) | | Insoluble Solids | 1.97 | g/m ² /month |
| | | Ash | 0.61 | g/m ² /month |
| | | Soluble Matter | 0.33 | g/m ² /month |
| | | Total Solids | 2.30 | g/m ² /month |
| | | Insoluble Solids | 1.96 | g/m ² /month |

Dunmore Quarry Environmental Monitoring Report

| | | | | |
|--------------------------------|-----------|------------------|------|-------------------------|
| Monitoring Point 4 (Site DD10) | | Ash | 1.06 | g/m ² /month |
| | | Soluble Matter | 1.04 | g/m ² /month |
| | | Total Solids | 2.99 | g/m ² /month |
| September 2023 | | | | |
| Monitoring Point 1 (Site 1A) | 31/10/23 | Insoluble Solids | 0.52 | g/m ² /month |
| | | Ash | 0.40 | g/m ² /month |
| | | Soluble Matter | 0.03 | g/m ² /month |
| | | Total Solids | 0.55 | g/m ² /month |
| Monitoring Point 2 (Site 2A) | | Insoluble Solids | 3.80 | g/m ² /month |
| | | Ash | 1.55 | g/m ² /month |
| | | Soluble Matter | 0.17 | g/m ² /month |
| | | Total Solids | 3.97 | g/m ² /month |
| Monitoring Point 3 (Site DD2) | | Insoluble Solids | 2.17 | g/m ² /month |
| | | Ash | 1.84 | g/m ² /month |
| | | Soluble Matter | 0.30 | g/m ² /month |
| | | Total Solids | 2.47 | g/m ² /month |
| Monitoring Point 4 (Site DD10) | | Insoluble Solids | 2.40 | g/m ² /month |
| | | Ash | 1.07 | g/m ² /month |
| | | Soluble Matter | 2.41 | g/m ² /month |
| | | Total Solids | 4.84 | g/m ² /month |
| August 2023 | | | | |
| Monitoring Point 1 (Site 1A) | 31/10/23 | Insoluble Solids | 1.96 | g/m ² /month |
| | | Ash | 1.30 | g/m ² /month |
| | | Soluble Matter | 2.29 | g/m ² /month |
| | | Total Solids | 4.25 | g/m ² /month |
| Monitoring Point 2 (Site 2A) | | Insoluble Solids | 1.64 | g/m ² /month |
| | | Ash | 0.42 | g/m ² /month |
| | | Soluble Matter | 0.83 | g/m ² /month |
| | | Total Solids | 2.48 | g/m ² /month |
| Monitoring Point 3 (Site DD2) | | Insoluble Solids | 3.37 | g/m ² /month |
| | | Ash | 0.47 | g/m ² /month |
| | | Soluble Matter | 0.39 | g/m ² /month |
| | | Total Solids | 3.76 | g/m ² /month |
| Monitoring Point 4 (Site DD10) | | Insoluble Solids | 1.64 | g/m ² /month |
| | | Ash | 0.63 | g/m ² /month |
| | | Soluble Matter | 0.53 | g/m ² /month |
| | | Total Solids | 2.18 | g/m ² /month |
| July 2023 | | | | |
| Monitoring Point 1 (Site 1A) | 5/09/2023 | Insoluble Solids | 1.28 | g/m ² /month |
| | | Ash | 1.17 | g/m ² /month |
| | | Soluble Matter | 1.64 | g/m ² /month |
| | | Total Solids | 2.92 | g/m ² /month |
| Monitoring Point 2 (Site 2A) | 5/09/2023 | Insoluble Solids | 1.00 | g/m ² /month |
| | | Ash | 1.00 | g/m ² /month |
| | | Soluble Matter | 0.72 | g/m ² /month |
| | | Total Solids | 1.72 | g/m ² /month |
| Monitoring Point 3 (Site DD2) | 5/09/2023 | Insoluble Solids | 0.92 | g/m ² /month |
| | | Ash | 0.53 | g/m ² /month |
| | | Soluble Matter | 2.14 | g/m ² /month |
| | | Total Solids | 3.06 | g/m ² /month |
| Monitoring Point 4 (Site DD10) | 5/09/2023 | Insoluble Solids | 0.62 | g/m ² /month |
| | | Ash | 0.47 | g/m ² /month |
| | | Soluble Matter | 1.80 | g/m ² /month |
| | | Total Solids | 2.41 | g/m ² /month |
| June 2023 | | | | |
| Monitoring Point 1 (Site 1A) | 24/08/23 | Insoluble Solids | 1.02 | g/m ² /month |
| | | Ash | 0.43 | g/m ² /month |
| | | Soluble Matter | 0.27 | g/m ² /month |

Dunmore Quarry Environmental Monitoring Report

| | | | | | |
|--------------------------------|------------|------------------|-------|-------------------------|------------------------------------|
| | | Total Solids | 1.29 | g/m ² /month | |
| Monitoring Point 2 (Site 2A) | 24/08/23 | Insoluble Solids | 0.45 | g/m ² /month | |
| | | Ash | 0.05 | g/m ² /month | |
| | | Soluble Matter | 0.29 | g/m ² /month | |
| | | Total Solids | 0.75 | g/m ² /month | |
| Monitoring Point 3 (Site DD2) | 24/08/23 | Insoluble Solids | 1.28 | g/m ² /month | |
| | | Ash | 0.68 | g/m ² /month | |
| | | Soluble Matter | 0.11 | g/m ² /month | |
| | | Total Solids | 1.39 | g/m ² /month | |
| Monitoring Point 4 (Site DD10) | 24/08/23 | Insoluble Solids | 0.69 | g/m ² /month | |
| | | Ash | 0.46 | g/m ² /month | |
| | | Soluble Matter | 19.91 | g/m ² /month | |
| | | Total Solids | 20.6 | g/m ² /month | |
| May 2023 | | | | | |
| Monitoring Point 1 (Site 1A) | 03/07/23 | Insoluble Solids | ND | g/m ² /month | No data as sample was contaminated |
| | | Ash | ND | g/m ² /month | |
| | | Soluble Matter | ND | g/m ² /month | |
| | | Total Solids | ND | g/m ² /month | |
| Monitoring Point 2 (Site 2A) | 03/07/23 | Insoluble Solids | 0.5 | g/m ² /month | |
| | | Ash | 0.48 | g/m ² /month | |
| | | Soluble Matter | 1.10 | g/m ² /month | |
| | | Total Solids | 1.60 | g/m ² /month | |
| Monitoring Point 3 (Site DD2) | 03/07/23 | Insoluble Solids | 0.65 | g/m ² /month | |
| | | Ash | 0.63 | g/m ² /month | |
| | | Soluble Matter | 1.30 | g/m ² /month | |
| | | Total Solids | 2.02 | g/m ² /month | |
| Monitoring Point 4 (Site DD10) | 03/07/23 | Insoluble Solids | 1.01 | g/m ² /month | |
| | | Ash | 0.63 | g/m ² /month | |
| | | Soluble Matter | 1.79 | g/m ² /month | |
| | | Total Solids | 2.80 | g/m ² /month | |
| April 2023 | | | | | |
| Monitoring Point 1 (Site 1A) | 05/06/2023 | Insoluble Solids | 0.89 | g/m ² /month | |
| | | Ash | 0.88 | g/m ² /month | |
| | | Soluble Matter | 1.40 | g/m ² /month | |
| | | Total Solids | 2.29 | g/m ² /month | |
| Monitoring Point 2 (Site 2A) | 05/06/2023 | Insoluble Solids | 1.02 | g/m ² /month | |
| | | Ash | 0.70 | g/m ² /month | |
| | | Soluble Matter | 0.73 | g/m ² /month | |
| | | Total Solids | 1.75 | g/m ² /month | |
| Monitoring Point 3 (Site DD2) | 05/06/2023 | Insoluble Solids | 2.64 | g/m ² /month | |
| | | Ash | 1.15 | g/m ² /month | |
| | | Soluble Matter | 2.23 | g/m ² /month | |
| | | Total Solids | 4.87 | g/m ² /month | |
| Monitoring Point 4 (Site DD10) | 05/06/2023 | Insoluble Solids | 1.30 | g/m ² /month | |
| | | Ash | 0.77 | g/m ² /month | |
| | | Soluble Matter | 1.79 | g/m ² /month | |
| | | Total Solids | 3.13 | g/m ² /month | |
| March 2023 | | | | | |
| Monitoring Point 1 (Site 1A) | 05/06/2023 | Insoluble Solids | 0.77 | g/m ² /month | |
| | | Ash | 0.59 | g/m ² /month | |
| | | Soluble Matter | 10.75 | g/m ² /month | |
| | | Total Solids | 11.52 | g/m ² /month | |
| Monitoring Point 2 (Site 2A) | 05/06/2023 | Insoluble Solids | 1.64 | g/m ² /month | |
| | | Ash | 1.19 | g/m ² /month | |
| | | Soluble Matter | 9.21 | g/m ² /month | |
| | | Total Solids | 10.85 | g/m ² /month | |
| Monitoring Point 3 (Site DD2) | 05/06/2023 | Insoluble Solids | 6.83 | g/m ² /month | |
| | | Ash | 2.55 | g/m ² /month | |

Dunmore Quarry Environmental Monitoring Report

| | | | | |
|--------------------------------|------------|------------------|-------|-------------------------|
| | | Soluble Matter | 9.77 | g/m ² /month |
| | | Total Solids | 16.61 | g/m ² /month |
| Monitoring Point 4 (Site DD10) | 05/06/2023 | Insoluble Solids | 2.41 | g/m ² /month |
| | | Ash | 2.17 | g/m ² /month |
| | | Soluble Matter | 9.40 | g/m ² /month |
| | | Total Solids | 11.81 | g/m ² /month |
| February 2023 | | | | |
| Monitoring Point 1 (Site 1A) | 04/04/2023 | Insoluble Solids | 2.20 | g/m ² /month |
| | | Ash | 0.66 | g/m ² /month |
| | | Soluble Matter | 1.07 | g/m ² /month |
| | | Total Solids | 3.27 | g/m ² /month |
| Monitoring Point 2 (Site 2A) | 04/04/2023 | Insoluble Solids | 1.89 | g/m ² /month |
| | | Ash | 0.66 | g/m ² /month |
| | | Soluble Matter | 0.24 | g/m ² /month |
| | | Total Solids | 2.14 | g/m ² /month |
| Monitoring Point 3 (Site DD2) | 04/04/2023 | Insoluble Solids | 1.98 | g/m ² /month |
| | | Ash | 1.68 | g/m ² /month |
| | | Soluble Matter | 0.42 | g/m ² /month |
| | | Total Solids | 2.40 | g/m ² /month |
| Monitoring Point 4 (Site DD10) | 04/04/2023 | Insoluble Solids | 1.26 | g/m ² /month |
| | | Ash | 0.66 | g/m ² /month |
| | | Soluble Matter | 0.56 | g/m ² /month |
| | | Total Solids | 1.82 | g/m ² /month |
| January 2023 | | | | |
| Monitoring Point 1 (Site 1A) | 04/04/2023 | Insoluble Solids | 2.26 | g/m ² /month |
| | | Ash | 0.77 | g/m ² /month |
| | | Soluble Matter | 0.26 | g/m ² /month |
| | | Total Solids | 2.52 | g/m ² /month |
| Monitoring Point 2 (Site 2A) | 04/04/2023 | Insoluble Solids | 0.67 | g/m ² /month |
| | | Ash | 0.56 | g/m ² /month |
| | | Soluble Matter | 1.45 | g/m ² /month |
| | | Total Solids | 2.12 | g/m ² /month |
| Monitoring Point 3 (Site DD2) | 04/04/2023 | Insoluble Solids | 1.40 | g/m ² /month |
| | | Ash | 0.54 | g/m ² /month |
| | | Soluble Matter | 0.78 | g/m ² /month |
| | | Total Solids | 2.18 | g/m ² /month |
| Monitoring Point 4 (Site DD10) | 04/04/2023 | Insoluble Solids | 1.23 | g/m ² /month |
| | | Ash | 0.60 | g/m ² /month |
| | | Soluble Matter | 0.51 | g/m ² /month |
| | | Total Solids | 1.74 | g/m ² /month |
| December 2022 | | | | |
| Monitoring Point 1 (Site 1A) | 04/04/2023 | Insoluble Solids | 11.74 | g/m ² /month |
| | | Ash | 6.72 | g/m ² /month |
| | | Soluble Matter | 4.57 | g/m ² /month |
| | | Total Solids | 16.31 | g/m ² /month |
| Monitoring Point 2 (Site 2A) | 04/04/2023 | Insoluble Solids | 3.27 | g/m ² /month |
| | | Ash | 1.51 | g/m ² /month |
| | | Soluble Matter | 5.21 | g/m ² /month |
| | | Total Solids | 8.48 | g/m ² /month |
| Monitoring Point 3 (Site DD2) | 04/04/2023 | Insoluble Solids | 1.10 | g/m ² /month |
| | | Ash | 0.97 | g/m ² /month |
| | | Soluble Matter | 3.79 | g/m ² /month |
| | | Total Solids | 4.88 | g/m ² /month |
| Monitoring Point 4 (Site DD10) | 04/04/2023 | Insoluble Solids | 1.45 | g/m ² /month |
| | | Ash | 1.29 | g/m ² /month |
| | | Soluble Matter | 0.73 | g/m ² /month |
| | | Total Solids | 2.18 | g/m ² /month |
| November 2022 | | | | |

Dunmore Quarry Environmental Monitoring Report

| | | | | | |
|--------------------------------|------------|------------------|------|-------------------------|-------------------------------------|
| Monitoring Point 1 (Site 1A) | 12/01/2023 | Insoluble Solids | 1.32 | g/m ² /month | |
| | | Ash | 0.94 | g/m ² /month | |
| | | Soluble Matter | 3.97 | g/m ² /month | |
| | | Total Solids | 5.29 | g/m ² /month | |
| Monitoring Point 2 (Site 2A) | 12/01/2023 | Insoluble Solids | 0.87 | g/m ² /month | |
| | | Ash | 0.69 | g/m ² /month | |
| | | Soluble Matter | 0.34 | g/m ² /month | |
| | | Total Solids | 1.21 | g/m ² /month | |
| Monitoring Point 3 (Site DD2) | 12/01/2023 | Insoluble Solids | 1.24 | g/m ² /month | |
| | | Ash | 0.76 | g/m ² /month | |
| | | Soluble Matter | 0.08 | g/m ² /month | |
| | | Total Solids | 1.33 | g/m ² /month | |
| Monitoring Point 4 (Site DD10) | 12/01/2023 | Insoluble Solids | 1.43 | g/m ² /month | |
| | | Ash | 1.18 | g/m ² /month | |
| | | Soluble Matter | 4.97 | g/m ² /month | |
| | | Total Solids | 6.40 | g/m ² /month | |
| October 2022 | | | | | |
| Monitoring Point 1 (Site 1A) | 14/11/2022 | Insoluble Solids | 1.59 | g/m ² /month | |
| | | Ash | 0.54 | g/m ² /month | |
| | | Soluble Matter | 0.18 | g/m ² /month | |
| | | Total Solids | 1.77 | g/m ² /month | |
| Monitoring Point 2 (Site 2A) | 14/11/2022 | Insoluble Solids | 2.05 | g/m ² /month | |
| | | Ash | 0.37 | g/m ² /month | |
| | | Soluble Matter | 0.02 | g/m ² /month | |
| | | Total Solids | 2.08 | g/m ² /month | |
| Monitoring Point 3 (Site DD2) | 14/11/2022 | Insoluble Solids | ND | g/m ² /month | No Data as sample was contaminated. |
| | | Ash | ND | g/m ² /month | |
| | | Soluble Matter | ND | g/m ² /month | |
| | | Total Solids | ND | g/m ² /month | |
| Monitoring Point 4 (Site DD10) | 14/11/2022 | Insoluble Solids | 1.15 | g/m ² /month | |
| | | Ash | 0.69 | g/m ² /month | |
| | | Soluble Matter | 1.13 | g/m ² /month | |
| | | Total Solids | 2.28 | g/m ² /month | |
| September 2022 | | | | | |
| Monitoring Point 1 (Site 1A) | 14/11/2022 | Insoluble Solids | 2.1 | g/m ² /month | |
| | | Ash | 1.14 | g/m ² /month | |
| | | Soluble Matter | 0.14 | g/m ² /month | |
| | | Total Solids | 2.24 | g/m ² /month | |
| Monitoring Point 2 (Site 2A) | 14/11/2022 | Insoluble Solids | 2.49 | g/m ² /month | |
| | | Ash | 1.40 | g/m ² /month | |
| | | Soluble Matter | 0.09 | g/m ² /month | |
| | | Total Solids | 2.58 | g/m ² /month | |
| Monitoring Point 3 (Site DD2) | 14/11/2022 | Insoluble Solids | 2.32 | g/m ² /month | |
| | | Ash | 1.45 | g/m ² /month | |
| | | Soluble Matter | 1.40 | g/m ² /month | |
| | | Total Solids | 3.72 | g/m ² /month | |
| Monitoring Point 4 (Site DD10) | 14/11/2022 | Insoluble Solids | 2.32 | g/m ² /month | |
| | | Ash | 1.30 | g/m ² /month | |
| | | Soluble Matter | 1.69 | g/m ² /month | |
| | | Total Solids | 4.00 | g/m ² /month | |
| August 2022 | | | | | |
| Monitoring Point 1 (Site 1A) | 28/9/2022 | Insoluble Solids | 0.82 | g/m ² /month | |
| | | Ash | 0.43 | g/m ² /month | |
| | | Soluble Matter | 0.38 | g/m ² /month | |
| | | Total Solids | 1.20 | g/m ² /month | |
| Monitoring Point 2 (Site 2A) | 28/9/2022 | Insoluble Solids | 0.32 | g/m ² /month | |
| | | Ash | 0.24 | g/m ² /month | |
| | | Soluble Matter | 0.28 | g/m ² /month | |

Dunmore Quarry Environmental Monitoring Report

| | | | | | |
|--------------------------------|------------|------------------|------|-------------------------|--|
| | | Total Solids | 0.60 | g/m ² /month | |
| Monitoring Point 3 (Site DD2) | 28/9/2022 | Insoluble Solids | 1.82 | g/m ² /month | |
| | | Ash | 1.74 | g/m ² /month | |
| | | Soluble Matter | 0.06 | g/m ² /month | |
| | | Total Solids | 1.88 | g/m ² /month | |
| Monitoring Point 4 (Site DD10) | 28/9/2022 | Insoluble Solids | 0.98 | g/m ² /month | |
| | | Ash | 0.73 | g/m ² /month | |
| | | Soluble Matter | 0.66 | g/m ² /month | |
| | | Total Solids | 1.64 | g/m ² /month | |
| July 2022 | | | | | |
| Monitoring Point 1 (Site 1A) | 31/08/2022 | Insoluble Solids | 0.14 | g/m ² /month | |
| | | Ash | 0.11 | g/m ² /month | |
| | | Soluble Matter | 0.51 | g/m ² /month | |
| | | Total Solids | 0.65 | g/m ² /month | |
| Monitoring Point 2 (Site 2A) | 31/08/2022 | Insoluble Solids | 0.69 | g/m ² /month | |
| | | Ash | 0.46 | g/m ² /month | |
| | | Soluble Matter | 1.22 | g/m ² /month | |
| | | Total Solids | 1.92 | g/m ² /month | |
| Monitoring Point 3 (Site DD2) | 31/08/2022 | Insoluble Solids | 5.06 | g/m ² /month | |
| | | Ash | 3.16 | g/m ² /month | |
| | | Soluble Matter | 0.04 | g/m ² /month | |
| | | Total Solids | 5.10 | g/m ² /month | |
| Monitoring Point 4 (Site DD10) | 31/08/2022 | Insoluble Solids | 0.63 | g/m ² /month | |
| | | Ash | 0.36 | g/m ² /month | |
| | | Soluble Matter | 0.48 | g/m ² /month | |
| | | Total Solids | 1.11 | g/m ² /month | |
| June 2022 | | | | | |
| Monitoring Point 1 (Site 1A) | 02/08/2022 | Insoluble Solids | 0.65 | g/m ² /month | |
| | | Ash | 0.17 | g/m ² /month | |
| | | Soluble Matter | 0.68 | g/m ² /month | |
| | | Total Solids | 1.33 | g/m ² /month | |
| Monitoring Point 2 (Site 2A) | 02/08/2022 | Insoluble Solids | 1.17 | g/m ² /month | |
| | | Ash | 0.11 | g/m ² /month | |
| | | Soluble Matter | 0.30 | g/m ² /month | |
| | | Total Solids | 1.47 | g/m ² /month | |
| Monitoring Point 3 (Site DD2) | 02/08/2022 | Insoluble Solids | 0.85 | g/m ² /month | |
| | | Ash | 0.56 | g/m ² /month | |
| | | Soluble Matter | 1.57 | g/m ² /month | |
| | | Total Solids | 2.42 | g/m ² /month | |
| Monitoring Point 4 (Site DD10) | 02/08/2022 | Insoluble Solids | 0.67 | g/m ² /month | |
| | | Ash | 0.31 | g/m ² /month | |
| | | Soluble Matter | 0.87 | g/m ² /month | |
| | | Total Solids | 1.54 | g/m ² /month | |
| May 2022 | | | | | |
| Monitoring Point 1 (Site 1A) | 1/07/2022 | Insoluble Solids | 0.57 | g/m ² /month | |
| | | Ash | 0.27 | g/m ² /month | |
| | | Soluble Matter | 0.18 | g/m ² /month | |
| | | Total Solids | 0.75 | g/m ² /month | |
| Monitoring Point 2 (Site 2A) | 1/07/2022 | Insoluble Solids | 1.28 | g/m ² /month | |
| | | Ash | 0.63 | g/m ² /month | |
| | | Soluble Matter | 0.27 | g/m ² /month | |
| | | Total Solids | 1.55 | g/m ² /month | |
| Monitoring Point 3 (Site DD2) | 1/07/2022 | Insoluble Solids | 1.34 | g/m ² /month | |
| | | Ash | 0.27 | g/m ² /month | |
| | | Soluble Matter | 0.56 | g/m ² /month | |
| | | Total Solids | 1.89 | g/m ² /month | |
| Monitoring Point 4 (Site DD10) | 1/07/2022 | Insoluble Solids | 2.44 | g/m ² /month | |
| | | Ash | 1.04 | g/m ² /month | |

Dunmore Quarry Environmental Monitoring Report

| | | | | | |
|--------------------------------|------------|------------------|------|-------------------------|--|
| | | Soluble Matter | 0.48 | g/m ² /month | |
| | | Total Solids | 2.91 | g/m ² /month | |
| April 2022 | | | | | |
| Monitoring Point 1 (Site 1A) | 20/06/2022 | Insoluble Solids | 0.98 | g/m ² /month | |
| | | Ash | 0.30 | g/m ² /month | |
| | | Soluble Matter | 0.07 | g/m ² /month | |
| | | Total Solids | 1.06 | g/m ² /month | |
| Monitoring Point 2 (Site 2A) | 20/06/2022 | Insoluble Solids | 1.01 | g/m ² /month | |
| | | Ash | 0.33 | g/m ² /month | |
| | | Soluble Matter | 0.46 | g/m ² /month | |
| | | Total Solids | 1.47 | g/m ² /month | |
| Monitoring Point 3 (Site DD2) | 25/05/2022 | Insoluble Solids | 0.88 | g/m ² /month | |
| | | Ash | 0.32 | g/m ² /month | |
| | | Soluble Matter | 0.50 | g/m ² /month | |
| | | Total Solids | 1.38 | g/m ² /month | |
| Monitoring Point 4 (Site DD10) | 25/05/2022 | Insoluble Solids | 1.31 | g/m ² /month | |
| | | Ash | 0.34 | g/m ² /month | |
| | | Soluble Matter | 0.18 | g/m ² /month | |
| | | Total Solids | 1.49 | g/m ² /month | |
| March 2022 | | | | | |
| Monitoring Point 1 (Site 1A) | 29/04/2022 | Insoluble Solids | 0.31 | g/m ² /month | |
| | | Ash | 0.17 | g/m ² /month | |
| | | Soluble Matter | 0.04 | g/m ² /month | |
| | | Total Solids | 0.35 | g/m ² /month | |
| Monitoring Point 2 (Site 2A) | 29/04/2022 | Insoluble Solids | 0.08 | g/m ² /month | |
| | | Ash | 0.02 | g/m ² /month | |
| | | Soluble Matter | 0.25 | g/m ² /month | |
| | | Total Solids | 0.33 | g/m ² /month | |
| Monitoring Point 3 (Site DD2) | 29/04/2022 | Insoluble Solids | 0.68 | g/m ² /month | |
| | | Ash | 0.09 | g/m ² /month | |
| | | Soluble Matter | 0.04 | g/m ² /month | |
| | | Total Solids | 0.72 | g/m ² /month | |
| Monitoring Point 4 (Site DD10) | 29/04/2022 | Insoluble Solids | 0.50 | g/m ² /month | |
| | | Ash | 0.10 | g/m ² /month | |
| | | Soluble Matter | 0.03 | g/m ² /month | |
| | | Total Solids | 0.53 | g/m ² /month | |
| February 2022 | | | | | |
| Monitoring Point 1 (Site 1A) | 30/03/2022 | Insoluble Solids | 2.50 | g/m ² /month | |
| | | Ash | 0.70 | g/m ² /month | |
| | | Soluble Matter | 0.47 | g/m ² /month | |
| | | Total Solids | 2.96 | g/m ² /month | |
| Monitoring Point 2 (Site 2A) | 30/03/2022 | Insoluble Solids | 1.69 | g/m ² /month | |
| | | Ash | 0.60 | g/m ² /month | |
| | | Soluble Matter | 0.02 | g/m ² /month | |
| | | Total Solids | 1.70 | g/m ² /month | |
| Monitoring Point 3 (Site DD2) | 30/03/2022 | Insoluble Solids | 1.19 | g/m ² /month | |
| | | Ash | 0.62 | g/m ² /month | |
| | | Soluble Matter | 0.14 | g/m ² /month | |
| | | Total Solids | 1.49 | g/m ² /month | |
| Monitoring Point 4 (Site DD10) | 30/03/2022 | Insoluble Solids | 1.42 | g/m ² /month | |
| | | Ash | 0.17 | g/m ² /month | |
| | | Soluble Matter | 0.04 | g/m ² /month | |
| | | Total Solids | 1.46 | g/m ² /month | |
| January 2022 | | | | | |
| Monitoring Point 1 (Site 1A) | 23/02/2022 | Insoluble Solids | ND | g/m ² /month | Glass bottle broken in transit, no data available. |
| | | Ash | ND | g/m ² /month | |
| | | Soluble Matter | ND | g/m ² /month | |
| | | Total Solids | ND | g/m ² /month | |

Dunmore Quarry Environmental Monitoring Report

| | | | | |
|--------------------------------|------------|------------------|------|-------------------------|
| Monitoring Point 2 (Site 2A) | 23/02/2022 | Insoluble Solids | 2.12 | g/m ² /month |
| | | Ash | 1.41 | g/m ² /month |
| | | Soluble Matter | 0.76 | g/m ² /month |
| | | Total Solids | 2.87 | g/m ² /month |
| Monitoring Point 3 (Site DD2) | 23/02/2022 | Insoluble Solids | 1.41 | g/m ² /month |
| | | Ash | 0.95 | g/m ² /month |
| | | Soluble Matter | 1.09 | g/m ² /month |
| | | Total Solids | 2.50 | g/m ² /month |
| Monitoring Point 4 (Site DD10) | 23/02/2022 | Insoluble Solids | 0.42 | g/m ² /month |
| | | Ash | 0.28 | g/m ² /month |
| | | Soluble Matter | 0.07 | g/m ² /month |
| | | Total Solids | 0.49 | g/m ² /month |
| December 2021 | | | | |
| Monitoring Point 1 (Site 1A) | 08/02/22 | Insoluble Solids | 3.71 | g/m ² /month |
| | | Ash | 1.44 | g/m ² /month |
| | | Soluble Matter | 4.11 | g/m ² /month |
| | | Total Solids | 7.82 | g/m ² /month |
| Monitoring Point 2 (Site 2A) | 08/02/22 | Insoluble Solids | 3.42 | g/m ² /month |
| | | Ash | 0.90 | g/m ² /month |
| | | Soluble Matter | 1.44 | g/m ² /month |
| | | Total Solids | 4.86 | g/m ² /month |
| Monitoring Point 3 (Site DD2) | 08/02/22 | Insoluble Solids | 2.26 | g/m ² /month |
| | | Ash | 1.03 | g/m ² /month |
| | | Soluble Matter | 6.28 | g/m ² /month |
| | | Total Solids | 8.54 | g/m ² /month |
| Monitoring Point 4 (Site DD10) | 08/02/22 | Insoluble Solids | 2.47 | g/m ² /month |
| | | Ash | 0.89 | g/m ² /month |
| | | Soluble Matter | 3.12 | g/m ² /month |
| | | Total Solids | 5.59 | g/m ² /month |
| November 2021 | | | | |
| Monitoring Point 1 (Site 1A) | 23/12/21 | Insoluble Solids | 1.41 | g/m ² /month |
| | | Ash | 0.90 | g/m ² /month |
| | | Soluble Matter | 0.29 | g/m ² /month |
| | | Total Solids | 1.70 | g/m ² /month |
| Monitoring Point 2 (Site 2A) | 23/12/21 | Insoluble Solids | 1.18 | g/m ² /month |
| | | Ash | 0.82 | g/m ² /month |
| | | Soluble Matter | 0.26 | g/m ² /month |
| | | Total Solids | 1.44 | g/m ² /month |
| Monitoring Point 3 (Site DD2) | 23/12/21 | Insoluble Solids | 0.92 | g/m ² /month |
| | | Ash | 0.55 | g/m ² /month |
| | | Soluble Matter | 1.15 | g/m ² /month |
| | | Total Solids | 2.06 | g/m ² /month |
| Monitoring Point 4 (Site DD10) | 23/12/21 | Insoluble Solids | 1.36 | g/m ² /month |
| | | Ash | 0.80 | g/m ² /month |
| | | Soluble Matter | 0.42 | g/m ² /month |
| | | Total Solids | 1.79 | g/m ² /month |
| October 2021 | | | | |
| Monitoring Point 1 (Site 1A) | 30/11/21 | Insoluble Solids | 1.55 | g/m ² /month |
| | | Ash | 1.04 | g/m ² /month |
| | | Soluble Matter | 1.93 | g/m ² /month |
| | | Total Solids | 3.47 | g/m ² /month |
| Monitoring Point 2 (Site 2A) | 30/11/21 | Insoluble Solids | 3.29 | g/m ² /month |
| | | Ash | 0.84 | g/m ² /month |
| | | Soluble Matter | 2.70 | g/m ² /month |
| | | Total Solids | 5.99 | g/m ² /month |
| Monitoring Point 3 (Site DD2) | 30/11/21 | Insoluble Solids | 1.69 | g/m ² /month |
| | | Ash | 1.09 | g/m ² /month |
| | | Soluble Matter | 1.98 | g/m ² /month |

Dunmore Quarry Environmental Monitoring Report

| | | | | | |
|--------------------------------|----------|------------------|------|-------------------------|---|
| | | Total Solids | 3.66 | g/m ² /month | |
| Monitoring Point 4 (Site DD10) | 30/11/21 | Insoluble Solids | 3.87 | g/m ² /month | |
| | | Ash | 3.29 | g/m ² /month | |
| | | Soluble Matter | 5.00 | g/m ² /month | |
| | | Total Solids | 8.86 | g/m ² /month | |
| September 2021 | | | | | |
| Monitoring Point 1 (Site 1A) | 10/11/21 | Insoluble Solids | ND | g/m ² /month | Glass bottle broken, no data available. |
| | | Ash | ND | g/m ² /month | |
| | | Soluble Matter | ND | g/m ² /month | |
| | | Total Solids | ND | g/m ² /month | |
| Monitoring Point 2 (Site 2A) | 10/11/21 | Insoluble Solids | 1.32 | g/m ² /month | |
| | | Ash | 0.98 | g/m ² /month | |
| | | Soluble Matter | 2.13 | g/m ² /month | |
| | | Total Solids | 3.45 | g/m ² /month | |
| Monitoring Point 3 (Site DD2) | 10/11/21 | Insoluble Solids | 1.13 | g/m ² /month | |
| | | Ash | 0.92 | g/m ² /month | |
| | | Soluble Matter | 1.72 | g/m ² /month | |
| | | Total Solids | 2.85 | g/m ² /month | |
| Monitoring Point 4 (Site DD10) | 10/11/21 | Insoluble Solids | 1.71 | g/m ² /month | |
| | | Ash | 1.45 | g/m ² /month | |
| | | Soluble Matter | 1.82 | g/m ² /month | |
| | | Total Solids | 3.53 | g/m ² /month | |
| August 2021 | | | | | |
| Monitoring Point 1 (Site 1A) | 30/09/21 | Insoluble Solids | 0.77 | g/m ² /month | |
| | | Ash | 0.75 | g/m ² /month | |
| | | Soluble Matter | 0.19 | g/m ² /month | |
| | | Total Solids | 0.96 | g/m ² /month | |
| Monitoring Point 2 (Site 2A) | 30/09/21 | Insoluble Solids | 1.38 | g/m ² /month | |
| | | Ash | 0.94 | g/m ² /month | |
| | | Soluble Matter | 1.08 | g/m ² /month | |
| | | Total Solids | 2.45 | g/m ² /month | |
| Monitoring Point 3 (Site DD2) | 30/09/21 | Insoluble Solids | 1.20 | g/m ² /month | |
| | | Ash | 0.84 | g/m ² /month | |
| | | Soluble Matter | 0.72 | g/m ² /month | |
| | | Total Solids | 1.91 | g/m ² /month | |
| Monitoring Point 4 (Site DD10) | 30/09/21 | Insoluble Solids | 1.16 | g/m ² /month | |
| | | Ash | 0.70 | g/m ² /month | |
| | | Soluble Matter | 0.84 | g/m ² /month | |
| | | Total Solids | 1.99 | g/m ² /month | |
| July 2021 | | | | | |
| Monitoring Point 1 (Site 1A) | 13/09/21 | Insoluble Solids | 1.73 | g/m ² /month | |
| | | Ash | 0.34 | g/m ² /month | |
| | | Soluble Matter | 0.10 | g/m ² /month | |
| | | Total Solids | 1.83 | g/m ² /month | |
| Monitoring Point 2 (Site 2A) | 13/09/21 | Insoluble Solids | 2.61 | g/m ² /month | |
| | | Ash | 0.64 | g/m ² /month | |
| | | Soluble Matter | 0.32 | g/m ² /month | |
| | | Total Solids | 2.92 | g/m ² /month | |
| Monitoring Point 3 (Site DD2) | 13/09/21 | Insoluble Solids | 1.44 | g/m ² /month | |
| | | Ash | 0.50 | g/m ² /month | |
| | | Soluble Matter | 0.27 | g/m ² /month | |
| | | Total Solids | 1.70 | g/m ² /month | |
| Monitoring Point 4 (Site DD10) | 13/09/21 | Insoluble Solids | 2.33 | g/m ² /month | |
| | | Ash | 0.77 | g/m ² /month | |
| | | Soluble Matter | 0.08 | g/m ² /month | |
| | | Total Solids | 2.40 | g/m ² /month | |
| June 2021 | | | | | |
| | 06/08/21 | Insoluble Solids | 1.13 | g/m ² /month | |

Dunmore Quarry Environmental Monitoring Report

| | | | | | |
|--------------------------------|----------|------------------|------|-------------------------|--|
| Monitoring Point 1 (Site 1A) | | Ash | 0.58 | g/m ² /month | |
| | | Soluble Matter | 0.32 | g/m ² /month | |
| | | Total Solids | 1.45 | g/m ² /month | |
| Monitoring Point 2 (Site 2A) | 06/08/21 | Insoluble Solids | 1.79 | g/m ² /month | |
| | | Ash | 0.49 | g/m ² /month | |
| | | Soluble Matter | 0.75 | g/m ² /month | |
| | | Total Solids | 2.54 | g/m ² /month | |
| Monitoring Point 3 (Site DD2) | 06/08/21 | Insoluble Solids | 2.06 | g/m ² /month | |
| | | Ash | 0.96 | g/m ² /month | |
| | | Soluble Matter | 0.50 | g/m ² /month | |
| | | Total Solids | 2.56 | g/m ² /month | |
| Monitoring Point 4 (Site DD10) | 06/08/21 | Insoluble Solids | 1.95 | g/m ² /month | |
| | | Ash | 0.61 | g/m ² /month | |
| | | Soluble Matter | 0.45 | g/m ² /month | |
| | | Total Solids | 2.41 | g/m ² /month | |
| May 2021 | | | | | |
| Monitoring Point 1 (Site 1A) | 24/6/21 | Insoluble Solids | 2.40 | g/m ² /month | |
| | | Ash | 0.87 | g/m ² /month | |
| | | Soluble Matter | 0.20 | g/m ² /month | |
| | | Total Solids | 2.59 | g/m ² /month | |
| Monitoring Point 2 (Site 2A) | 24/6/21 | Insoluble Solids | 2.27 | g/m ² /month | |
| | | Ash | 0.79 | g/m ² /month | |
| | | Soluble Matter | 0.30 | g/m ² /month | |
| | | Total Solids | 2.57 | g/m ² /month | |
| Monitoring Point 3 (Site DD2) | 24/6/21 | Insoluble Solids | 2.62 | g/m ² /month | |
| | | Ash | 0.48 | g/m ² /month | |
| | | Soluble Matter | 1.29 | g/m ² /month | |
| | | Total Solids | 3.92 | g/m ² /month | |
| Monitoring Point 4 (Site DD10) | 24/6/21 | Insoluble Solids | 2.36 | g/m ² /month | |
| | | Ash | 0.70 | g/m ² /month | |
| | | Soluble Matter | 0.64 | g/m ² /month | |
| | | Total Solids | 3.00 | g/m ² /month | |
| April 2021 | | | | | |
| Monitoring Point 1 (Site 1A) | 28/05/21 | Insoluble Solids | 0.98 | g/m ² /month | |
| | | Ash | 0.91 | g/m ² /month | |
| | | Soluble Matter | 0.24 | g/m ² /month | |
| | | Total Solids | 1.22 | g/m ² /month | |
| Monitoring Point 2 (Site 2A) | 28/05/21 | Insoluble Solids | 1.68 | g/m ² /month | |
| | | Ash | 1.66 | g/m ² /month | |
| | | Soluble Matter | 0.03 | g/m ² /month | |
| | | Total Solids | 1.71 | g/m ² /month | |
| Monitoring Point 3 (Site DD2) | 28/05/21 | Insoluble Solids | 1.47 | g/m ² /month | |
| | | Ash | 0.81 | g/m ² /month | |
| | | Soluble Matter | 0.98 | g/m ² /month | |
| | | Total Solids | 2.45 | g/m ² /month | |
| Monitoring Point 4 (Site DD10) | 28/05/21 | Insoluble Solids | 0.93 | g/m ² /month | |
| | | Ash | 0.88 | g/m ² /month | |
| | | Soluble Matter | 0.02 | g/m ² /month | |
| | | Total Solids | 0.95 | g/m ² /month | |
| March 2021 | | | | | |
| Monitoring Point 1 (Site 1A) | 29/4/21 | Insoluble Solids | 1.90 | g/m ² /month | |
| | | Ash | 1.33 | g/m ² /month | |
| | | Soluble Matter | 3.27 | g/m ² /month | |
| | | Total Solids | 5.17 | g/m ² /month | |
| Monitoring Point 2 (Site 2A) | 29/4/21 | Insoluble Solids | 2.23 | g/m ² /month | |
| | | Ash | 1.51 | g/m ² /month | |
| | | Soluble Matter | 2.75 | g/m ² /month | |
| | | Total Solids | 4.98 | g/m ² /month | |

Dunmore Quarry Environmental Monitoring Report

| | | | | |
|--------------------------------|---------|------------------|------|-------------------------|
| Monitoring Point 3 (Site DD2) | 29/4/21 | Insoluble Solids | 1.62 | g/m ² /month |
| | | Ash | 0.79 | g/m ² /month |
| | | Soluble Matter | 0.83 | g/m ² /month |
| | | Total Solids | 2.45 | g/m ² /month |
| Monitoring Point 4 (Site DD10) | 29/4/21 | Insoluble Solids | 2.79 | g/m ² /month |
| | | Ash | 1.70 | g/m ² /month |
| | | Soluble Matter | 4.01 | g/m ² /month |
| | | Total Solids | 6.80 | g/m ² /month |
| February 2021 | | | | |
| Monitoring Point 1 (Site 1A) | 16/4/21 | Insoluble Solids | 1.31 | g/m ² /month |
| | | Ash | 1.22 | g/m ² /month |
| | | Soluble Matter | 1.98 | g/m ² /month |
| | | Total Solids | 3.29 | g/m ² /month |
| Monitoring Point 2 (Site 2A) | 16/4/21 | Insoluble Solids | 0.94 | g/m ² /month |
| | | Ash | 0.84 | g/m ² /month |
| | | Soluble Matter | 2.43 | g/m ² /month |
| | | Total Solids | 3.37 | g/m ² /month |
| Monitoring Point 3 (Site DD2) | 16/4/21 | Insoluble Solids | 0.96 | g/m ² /month |
| | | Ash | 0.87 | g/m ² /month |
| | | Soluble Matter | 3.03 | g/m ² /month |
| | | Total Solids | 3.99 | g/m ² /month |
| Monitoring Point 4 (Site DD10) | 16/4/21 | Insoluble Solids | 0.85 | g/m ² /month |
| | | Ash | 0.72 | g/m ² /month |
| | | Soluble Matter | 1.97 | g/m ² /month |
| | | Total Solids | 2.81 | g/m ² /month |
| January 2021 | | | | |
| Monitoring Point 1 (Site 1A) | 17/3/21 | Insoluble Solids | 1.24 | g/m ² /month |
| | | Ash | 0.87 | g/m ² /month |
| | | Soluble Matter | 3.42 | g/m ² /month |
| | | Total Solids | 4.66 | g/m ² /month |
| Monitoring Point 2 (Site 2A) | 17/3/21 | Insoluble Solids | 1.12 | g/m ² /month |
| | | Ash | 0.83 | g/m ² /month |
| | | Soluble Matter | 0.29 | g/m ² /month |
| | | Total Solids | 3.15 | g/m ² /month |
| Monitoring Point 3 (Site DD2) | 17/3/21 | Insoluble Solids | 1.36 | g/m ² /month |
| | | Ash | 1.15 | g/m ² /month |
| | | Soluble Matter | 3.39 | g/m ² /month |
| | | Total Solids | 4.75 | g/m ² /month |
| Monitoring Point 4 (Site DD10) | 17/3/21 | Insoluble Solids | 1.25 | g/m ² /month |
| | | Ash | 1.17 | g/m ² /month |
| | | Soluble Matter | 3.66 | g/m ² /month |
| | | Total Solids | 4.91 | g/m ² /month |
| December 2020 | | | | |
| Monitoring Point 1 (Site 1A) | 10/2/21 | Insoluble Solids | 4.17 | g/m ² /month |
| | | Ash | 2.18 | g/m ² /month |
| | | Soluble Matter | 5.76 | g/m ² /month |
| | | Total Solids | 9.93 | g/m ² /month |
| Monitoring Point 2 (Site 2A) | 10/2/21 | Insoluble Solids | 1.94 | g/m ² /month |
| | | Ash | 1.61 | g/m ² /month |
| | | Soluble Matter | 2.96 | g/m ² /month |
| | | Total Solids | 4.84 | g/m ² /month |
| Monitoring Point 3 (Site DD2) | 10/2/21 | Insoluble Solids | 2.39 | g/m ² /month |
| | | Ash | 0.91 | g/m ² /month |
| | | Soluble Matter | 3.10 | g/m ² /month |
| | | Total Solids | 5.49 | g/m ² /month |
| Monitoring Point 4 (Site DD10) | 10/2/21 | Insoluble Solids | 3.56 | g/m ² /month |
| | | Ash | 1.92 | g/m ² /month |
| | | Soluble Matter | 1.23 | g/m ² /month |

Dunmore Quarry Environmental Monitoring Report

| | | | | | |
|--------------------------------|----------|------------------|------|-------------------------|--|
| | | Total Solids | 4.79 | g/m ² /month | |
| November 2020 | | | | | |
| Monitoring Point 1 (Site 1A) | 11/01/21 | Insoluble Solids | 2.60 | g/m ² /month | |
| | | Ash | 1.37 | g/m ² /month | |
| | | Soluble Matter | 0.92 | g/m ² /month | |
| | | Total Solids | 3.52 | g/m ² /month | |
| Monitoring Point 2 (Site 2A) | 11/01/21 | Insoluble Solids | 1.40 | g/m ² /month | |
| | | Ash | 0.88 | g/m ² /month | |
| | | Soluble Matter | 0.42 | g/m ² /month | |
| | | Total Solids | 1.82 | g/m ² /month | |
| Monitoring Point 3 (Site DD2) | 11/01/21 | Insoluble Solids | 0.72 | g/m ² /month | |
| | | Ash | 0.12 | g/m ² /month | |
| | | Soluble Matter | 0.24 | g/m ² /month | |
| | | Total Solids | 0.96 | g/m ² /month | |
| Monitoring Point 4 (Site DD10) | 11/01/21 | Insoluble Solids | 2.88 | g/m ² /month | |
| | | Ash | 1.66 | g/m ² /month | |
| | | Soluble Matter | 1.09 | g/m ² /month | |
| | | Total Solids | 3.96 | g/m ² /month | |
| October 2020 | | | | | |
| Monitoring Point 1 (Site 1A) | 01/12/20 | Insoluble Solids | 1.97 | g/m ² /month | |
| | | Ash | 1.28 | g/m ² /month | |
| | | Soluble Matter | 1.22 | g/m ² /month | |
| | | Total Solids | 3.19 | g/m ² /month | |
| Monitoring Point 2 (Site 2A) | 01/12/20 | Insoluble Solids | 2.80 | g/m ² /month | |
| | | Ash | 1.30 | g/m ² /month | |
| | | Soluble Matter | 1.78 | g/m ² /month | |
| | | Total Solids | 4.57 | g/m ² /month | |
| Monitoring Point 3 (Site DD2) | 01/12/20 | Insoluble Solids | 2.51 | g/m ² /month | |
| | | Ash | 1.30 | g/m ² /month | |
| | | Soluble Matter | 2.20 | g/m ² /month | |
| | | Total Solids | 4.72 | g/m ² /month | |
| Monitoring Point 4 (Site DD10) | 01/12/20 | Insoluble Solids | 0.93 | g/m ² /month | |
| | | Ash | 0.58 | g/m ² /month | |
| | | Soluble Matter | 1.03 | g/m ² /month | |
| | | Total Solids | 1.96 | g/m ² /month | |
| September 2020 | | | | | |
| Monitoring Point 1 (Site 1A) | 30/10/20 | Insoluble Solids | 1.66 | g/m ² /month | |
| | | Ash | 1.27 | g/m ² /month | |
| | | Soluble Matter | 1.46 | g/m ² /month | |
| | | Total Solids | 3.13 | g/m ² /month | |
| Monitoring Point 2 (Site 2A) | 30/10/20 | Insoluble Solids | 1.41 | g/m ² /month | |
| | | Ash | 0.98 | g/m ² /month | |
| | | Soluble Matter | 1.15 | g/m ² /month | |
| | | Total Solids | 2.56 | g/m ² /month | |
| Monitoring Point 3 (Site DD2) | 30/10/20 | Insoluble Solids | 1.43 | g/m ² /month | |
| | | Ash | 1.02 | g/m ² /month | |
| | | Soluble Matter | 1.19 | g/m ² /month | |
| | | Total Solids | 2.62 | g/m ² /month | |
| Monitoring Point 4 (Site DD10) | 30/10/20 | Insoluble Solids | 1.40 | g/m ² /month | |
| | | Ash | 0.97 | g/m ² /month | |
| | | Soluble Matter | 1.07 | g/m ² /month | |
| | | Total Solids | 2.47 | g/m ² /month | |
| August 2020 | | | | | |
| Monitoring Point 1 (Site 1A) | 30/09/20 | Insoluble Solids | 1.14 | g/m ² /month | |
| | | Ash | 0.56 | g/m ² /month | |
| | | Soluble Matter | 1.27 | g/m ² /month | |
| | | Total Solids | 2.41 | g/m ² /month | |
| | 30/09/20 | Insoluble Solids | 1.84 | g/m ² /month | |

Dunmore Quarry Environmental Monitoring Report

| | | | | | | |
|--------------------------------|----------|------------------|------|-------------------------|--|--|
| Monitoring Point 2 (Site 2A) | | Ash | 1.30 | g/m ² /month | | |
| | | Soluble Matter | 1.44 | g/m ² /month | | |
| | | Total Solids | 3.28 | g/m ² /month | | |
| Monitoring Point 3 (Site DD2) | 30/09/20 | Insoluble Solids | 1.19 | g/m ² /month | | |
| | | Ash | 0.80 | g/m ² /month | | |
| | | Soluble Matter | 1.97 | g/m ² /month | | |
| | | Total Solids | 3.16 | g/m ² /month | | |
| Monitoring Point 4 (Site DD10) | 30/09/20 | Insoluble Solids | 1.63 | g/m ² /month | | |
| | | Ash | 1.36 | g/m ² /month | | |
| | | Soluble Matter | 0.73 | g/m ² /month | | |
| | | Total Solids | 2.36 | g/m ² /month | | |
| July 2020 | | | | | | |
| Monitoring Point 1 (Site 1A) | | Insoluble Solids | 2.02 | g/m ² /month | | Monitoring Point 3 had a measured insoluble solids and ash content above 4 g/m ² /month for July. Despite this elevated reading, the rolling annual average for the insoluble solids fraction was 3.02 g/m ² /month and is therefore compliant with EPL 77 and DA 470-11-2003 limits. During July the wind was predominantly from the W, WSW and SW which <u>is not from the general direction of the Dunmore operations</u> at monitoring point 2 (located S of Dunmore operations). |
| | | Ash | 1.44 | g/m ² /month | | |
| | | Soluble Matter | 1.71 | g/m ² /month | | |
| | | Total Solids | 3.73 | g/m ² /month | | |
| Monitoring Point 2 (Site 2A) | | Insoluble Solids | 0.97 | g/m ² /month | | |
| | | Ash | 0.75 | g/m ² /month | | |
| | | Soluble Matter | 0.94 | g/m ² /month | | |
| | | Total Solids | 1.91 | g/m ² /month | | |
| Monitoring Point 3 (Site DD2) | | Insoluble Solids | 4.89 | g/m ² /month | | |
| | | Ash | 4.28 | g/m ² /month | | |
| | | Soluble Matter | 3.51 | g/m ² /month | | |
| | | Total Solids | 8.49 | g/m ² /month | | |
| Monitoring Point 4 (Site DD10) | | Insoluble Solids | 1.69 | g/m ² /month | | |
| | | Ash | 1.03 | g/m ² /month | | |
| | | Soluble Matter | 1.80 | g/m ² /month | | |
| | | Total Solids | 3.49 | g/m ² /month | | |
| July 2020 | | | | | | |
| Monitoring Point 1 (Site 1A) | | Insoluble Solids | 0.93 | g/m ² /month | | |
| | | Ash | 0.85 | g/m ² /month | | |
| | | Soluble Matter | 0.87 | g/m ² /month | | |
| | | Total Solids | 1.80 | g/m ² /month | | |
| Monitoring Point 2 (Site 2A) | | Insoluble Solids | 0.56 | g/m ² /month | | |
| | | Ash | 0.51 | g/m ² /month | | |
| | | Soluble Matter | 0.65 | g/m ² /month | | |
| | | Total Solids | 1.21 | g/m ² /month | | |
| Monitoring Point 3 (Site DD2) | | Insoluble Solids | 1.03 | g/m ² /month | | |
| | | Ash | 0.70 | g/m ² /month | | |
| | | Soluble Matter | 2.12 | g/m ² /month | | |
| | | Total Solids | 3.15 | g/m ² /month | | |
| Monitoring Point 4 (Site DD10) | | Insoluble Solids | 0.87 | g/m ² /month | | |
| | | Ash | 0.46 | g/m ² /month | | |
| | | Soluble Matter | 0.90 | g/m ² /month | | |
| | | Total Solids | 1.77 | g/m ² /month | | |
| May 2020 | | | | | | |
| Monitoring Point 1 (Site 1A) | | Insoluble Solids | 1.25 | g/m ² /month | | |
| | | Ash | 0.83 | g/m ² /month | | |
| | | Soluble Matter | 4.31 | g/m ² /month | | |
| | | Total Solids | 5.57 | g/m ² /month | | |
| Monitoring Point 2 (Site 2A) | | Insoluble Solids | 1.09 | g/m ² /month | | |
| | | Ash | 0.83 | g/m ² /month | | |
| | | Soluble Matter | 0.77 | g/m ² /month | | |

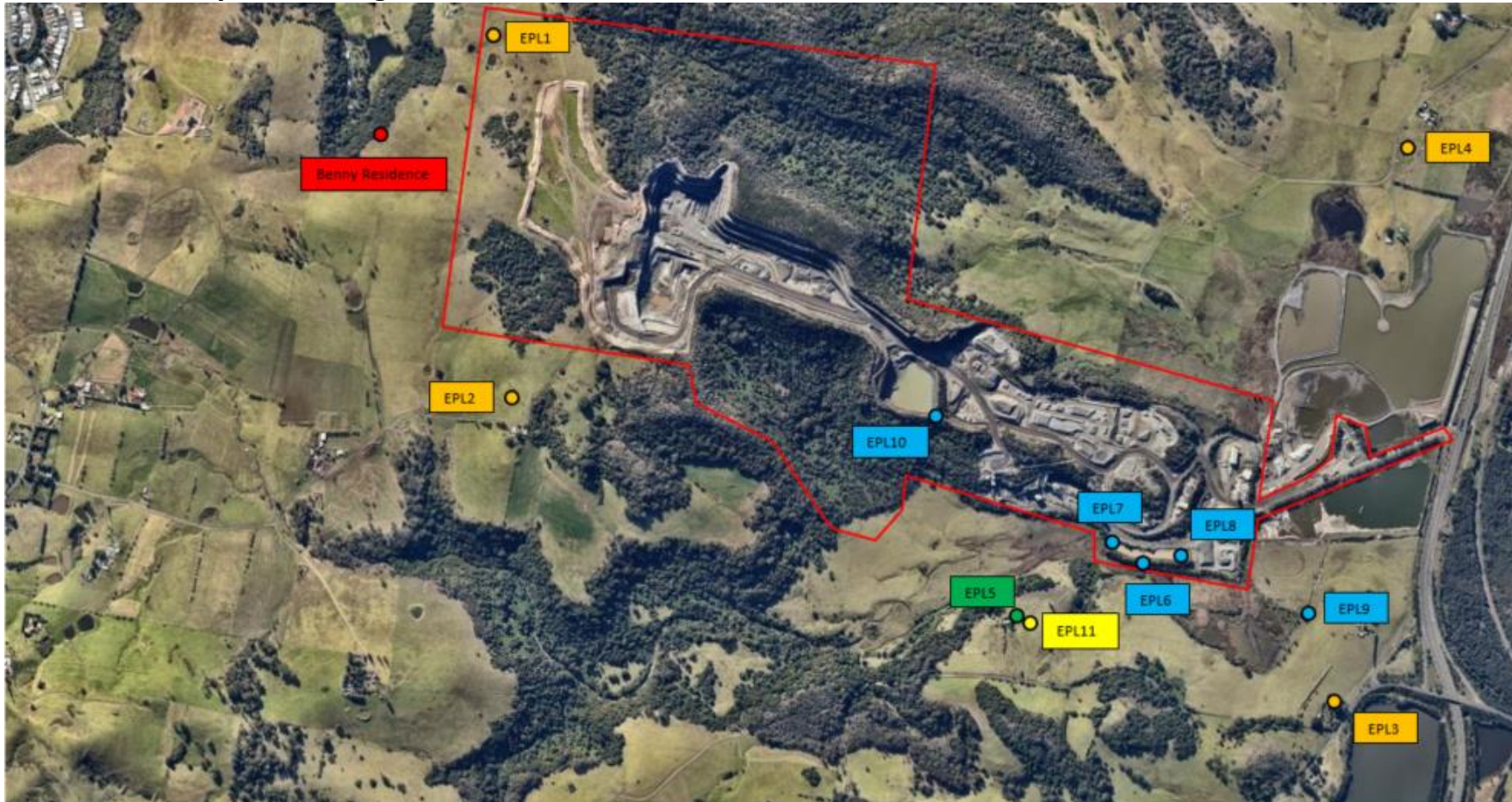
Dunmore Quarry Environmental Monitoring Report

| | | | | | |
|--------------------------------|--|------------------|-------|-------------------------|---|
| | | Total Solids | 1.86 | g/m ² /month | |
| Monitoring Point 3 (Site DD2) | | Insoluble Solids | 1.18 | g/m ² /month | |
| | | Ash | 1.04 | g/m ² /month | |
| | | Soluble Matter | 1.09 | g/m ² /month | |
| | | Total Solids | 2.28 | g/m ² /month | |
| Monitoring Point 4 (Site DD10) | | Insoluble Solids | 0.79 | g/m ² /month | |
| | | Ash | 0.67 | g/m ² /month | |
| | | Soluble Matter | 0.93 | g/m ² /month | |
| | | Total Solids | 1.72 | g/m ² /month | |
| April 2020 | | | | | |
| Monitoring Point 1 (Site 1A) | | Insoluble Solids | 1.45 | g/m ² /month | |
| | | Ash | 0.95 | g/m ² /month | |
| | | Soluble Matter | 0.50 | g/m ² /month | |
| | | Total Solids | 2.82 | g/m ² /month | |
| Monitoring Point 2 (Site 2A) | | Insoluble Solids | 4.84 | g/m ² /month | |
| | | Ash | 2.36 | g/m ² /month | |
| | | Soluble Matter | 5.23 | g/m ² /month | |
| | | Total Solids | 10.06 | g/m ² /month | |
| Monitoring Point 3 (Site DD2) | | Insoluble Solids | 1.69 | g/m ² /month | |
| | | Ash | 0.95 | g/m ² /month | |
| | | Soluble Matter | 1.40 | g/m ² /month | |
| | | Total Solids | 3.09 | g/m ² /month | |
| Monitoring Point 4 (Site DD10) | | Insoluble Solids | 1.40 | g/m ² /month | |
| | | Ash | 0.85 | g/m ² /month | |
| | | Soluble Matter | 1.44 | g/m ² /month | |
| | | Total Solids | 2.84 | g/m ² /month | |
| March 2020 | | | | | |
| Monitoring Point 1 (Site 1A) | | Insoluble Solids | 2.03 | g/m ² /month | |
| | | Ash | 1.56 | g/m ² /month | |
| | | Soluble Matter | 3.47 | g/m ² /month | |
| | | Total Solids | 5.50 | g/m ² /month | |
| Monitoring Point 2 (Site 2A) | | Insoluble Solids | 1.75 | g/m ² /month | |
| | | Ash | 1.11 | g/m ² /month | |
| | | Soluble Matter | 1.38 | g/m ² /month | |
| | | Total Solids | 3.12 | g/m ² /month | |
| Monitoring Point 3 (Site DD2) | | Insoluble Solids | 1.81 | g/m ² /month | |
| | | Ash | 1.05 | g/m ² /month | |
| | | Soluble Matter | 1.86 | g/m ² /month | |
| | | Total Solids | 3.66 | g/m ² /month | |
| Monitoring Point 4 (Site DD10) | | Insoluble Solids | 1.85 | g/m ² /month | |
| | | Ash | 1.20 | g/m ² /month | |
| | | Soluble Matter | 0.92 | g/m ² /month | |
| | | Total Solids | 2.77 | g/m ² /month | |
| February 2020 | | | | | |
| Monitoring Point 1 (Site 1A) | | Insoluble Solids | 6.77 | g/m ² /month | Currowan Bushfire burning within the South Coast region |
| | | Ash | 3.11 | g/m ² /month | |
| | | Soluble Matter | 7.84 | g/m ² /month | |
| | | Total Solids | 14.60 | g/m ² /month | |
| Monitoring Point 2 (Site 2A) | | Insoluble Solids | 13.25 | g/m ² /month | Currowan Bushfire burning within the South Coast region |
| | | Ash | 9.90 | g/m ² /month | |
| | | Soluble Matter | 11.83 | g/m ² /month | |
| | | Total Solids | 25.08 | g/m ² /month | |
| Monitoring Point 3 (Site DD2) | | Insoluble Solids | 4.60 | g/m ² /month | Currowan Bushfire burning within the South Coast region |
| | | Ash | 3.06 | g/m ² /month | |
| | | Soluble Matter | 7.34 | g/m ² /month | |
| | | Total Solids | 11.94 | g/m ² /month | |
| Monitoring Point 4 (Site DD10) | | Insoluble Solids | 3.64 | g/m ² /month | |
| | | Ash | 2.26 | g/m ² /month | |

Dunmore Quarry Environmental Monitoring Report

| | | | | | |
|--|--|----------------|------|-------------------------|---|
| | | Soluble Matter | 5.36 | g/m ² /month | Currowan Bushfire burning within the South Coast region |
| | | Total Solids | 9.00 | g/m ² /month | |
| Further Historical monitoring data relating to dust can be found in the associated Annual Reviews for each year. Location of the Dunmore Quarry Annual Reviews can be found at https://www.boral.com.au/locations/boral-dunmore-operations | | | | | |

Dunmore Quarry Monitoring Locations.



LEGEND

- | | | | |
|------------------------|----------------------------------|---------------------------------|-----------------------------------|
| Site Boundary | Water Discharge Monitoring Point | Deposited Dust Monitoring Point | Weather Analysis Monitoring Point |
| Blast Monitoring Point | High Volume Air Sampling Point | | |