



Building something great

Boral Wollert Quarry Expansion Project Fact Sheet

Boral Wollert Quarry

The Boral Wollert Quarry was established in 1971 as a hard rock quarry and, together with its associated processing facilities and concrete batching plant, occupies approximately 178 hectares of Boral owned land. The quarry processing plant and concrete batching plant are located to the west of the quarry pit and produce aggregate materials used in the manufacture of concrete, asphalt, and other essential construction products.



Due to its relatively close proximity to Melbourne’s CBD, the Wollert Quarry has played a significant role in supplying construction materials that have contributed to the development of Melbourne’s infrastructure and skyline over many decades.

Proposed Eastern Expansion

Boral has applied to the relevant government authorities seeking approval to extend the Wollert Quarry’s extraction boundaries. The proposed extension is located to the east of the current extraction area and is entirely within Boral’s existing mining tenement (WA102) and landholdings, which Boral owns and manages.

Approval for the proposed extension is being progressed through a process known as a Work Plan Variation (WPV). A WPV is required where changes are proposed to quarry operations that are not authorised under the existing approved work plan.

Under the Mineral Resources (Sustainable Development) Act 1990, a work plan variation must be approved by the relevant government authorities before any expansion activity can commence. In November 2025, the proposed WPV received endorsement from Earth Resources Regulation. Following this endorsement, Boral lodged a planning permit application with the Department of Transport and Planning in January 2026.

What does the expansion mean?

The proposed expansion of the quarry footprint includes:

- An eastern extension to the quarry pit of 2.33ha
- Backfilling the void to create a useable landform

As part of the proposed quarry expansion, the area that has been excavated would be progressively filled in as quarrying is completed. This process helps return the land to a stable and usable condition over time, rather than leaving large open areas once quarrying ends.

The filled land would be carefully shaped to blend in with the surrounding landscape and designed to safely manage rainwater and drainage. The final landform would be safe, stable, and suitable for future use, ensuring the site is responsibly managed both during operations and after quarrying has finished.

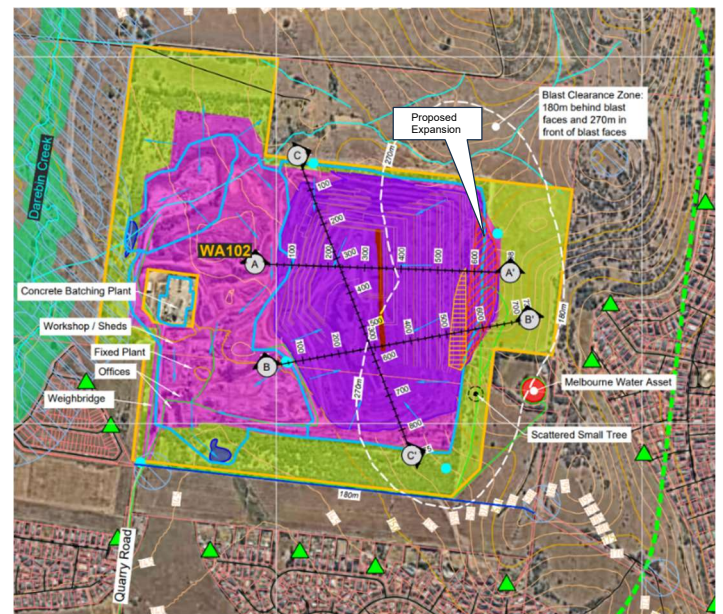
Why is Boral extending its boundaries?

Boral is seeking approval to extend the Wollert Quarry’s extraction boundaries to access known stone reserves and extend the operational life of the quarry. Resources within the current approved quarry footprint are expected to be exhausted by 2027, making the proposed extension critical to maintaining ongoing supply.

Between 2025 and 2040, Melbourne’s population is forecast to increase by approximately 39%, driving significant demand for new housing, transport infrastructure, and supporting services. The proposed extension would ensure Boral is well placed to continue supplying essential construction materials, including aggregates used in concrete and road construction, to support this growth.

The additional quarry resources made available through the proposed expansion are expected to play a vital role in supporting the construction industry and delivering major infrastructure projects at both a regional and State level over the coming decade.

FIGURE 1: PROPOSED DEVELOPMENT PLAN





**Building
something
great**

Boral Wollert Quarry Expansion Project Fact Sheet

Assessment of impacts

As part of the development of the work plan variation, Boral identified social and environmental impacts that need to be managed. Technical experts assessed these impacts and identified ways to reduce them as much as practicable.

Based on the results of the assessments, management plans that include risk mitigation and monitoring measures were created that will guide us in our expansion activities.

Please email community@boral.com.au if you would like to access these assessments.

Management of impacts on our community

Boral takes seriously its responsibility to minimise the impacts of quarry operations on our neighbours and community.

Traffic

The project will not result in a material increase in the number or size of vehicles on local roads. The operation will continue to use the existing site entrance on Findon Road and there will be no change to the traffic routes that vehicles from the quarry currently use.

Dust

The risk of adverse impact to air quality at the nearest sensitive receptors is predicted to be low. Boral manages dust across all aspects of its operations including using real-time dust monitors and water suppression.

Noise

The noise impact assessment reported the expanded quarry's noise emissions are predicted to comply with the EPA's regulations.

Flora and fauna

The expansion will occur predominantly on native and introduced grassland to the east.

Blasting and ground vibration

There is no proposed increase in how often blasting occurs. Blasting would continue at its current frequency of approximately once every three weeks.

Blasts are carefully monitored at several locations around the site. The blasting model used for the quarry has been tested and adjusted using actual monitoring results and meets the strict limits set by Earth Resources Regulation (ERR).

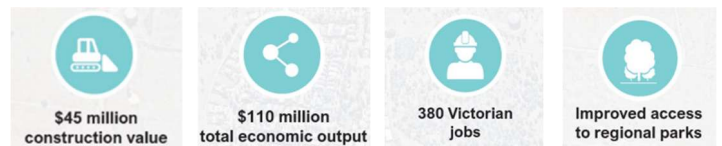
While some people may occasionally feel or hear a blast, the limits set by ERR are designed to protect both homes and people. These limits ensure blasting does not cause damage to property and remains within accepted standards for human comfort.

Native Vegetation

The project has been designed to minimise the removal of native vegetation and will be offset through the purchase of habitat offsets. No scattered native trees will be removed.

Project Benefits

The proposed extension of the Wollert Quarry will extend the life of an established operation as existing reserves are exhausted by 2027, ensuring a continued local supply of essential construction materials. This will support Melbourne's forecast population growth of approximately 39% between 2025 and 2040 by providing materials needed for housing, roads, and major infrastructure, while reducing transport distances, supporting jobs, and minimising broader environmental and cost impacts.



Project timeline

- January 2025: Work plan variation submitted to Earth Resources Regulation
- November 2025: Earth Resources Regulation endorsement of the work plan
- January 2026: Planning permit submitted to the Department of Transport and Planning (DTP)
- May-June 2026: Public notification of project

Pending DTP's approval

- February 2027: Eastern expansion, which contains approximately 10 years of resource extraction
- Feb 2042: Rehabilitation of the quarry void complete

Community drop-in sessions

Boral will hold drop-in sessions to provide more information about the work plan variation to our community.

Session 1 Wednesday May 20 from 4pm-7pm

Session 2 Thursday May 21 from 4pm-7pm

Further information

For further information please get in touch on community@boral.com.au.