

# Brighton Cement Works

Group of workers  
at the Brighton  
Cement Works  
(1895)



Staff and family picnic from the Brighton Cement Company, 7th April 1917.

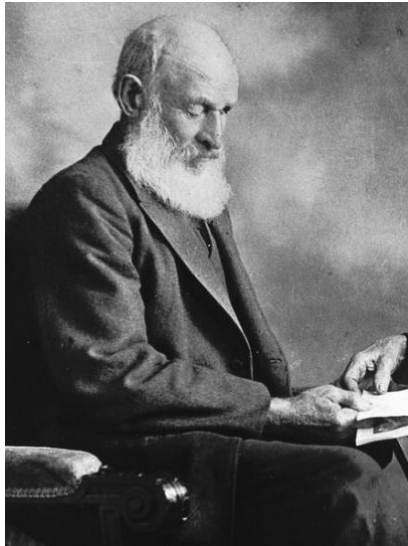


Workers in the  
re-bricking bottle  
kilns at  
the Brighton  
Cement Works,  
later known as  
the South  
Australian  
Portland Cement  
Company  
(1896).

# Brighton Cement Works



William Lewis, founder of the Brighton Cement Works (1882)



David Tillbrook, the original employee of the first Brighton Cement Works (1882)



William Mofflin, a foundation Director of the South Australian Portland Cement Company, formerly Brighton Cement Works, and later Brighton Cement Company (1892)

Quarrying first began at the site in 1882 to provide raw material (limestone) to the nearby Brighton Cement Works. By 1892, this operation had become *The South Australian Portland Cement Company Limited*.



Members of the picnic committee from Brighton Cement Works photographed during their outing at Long Gully in Belair National Park, South Australia; names not known (1917)

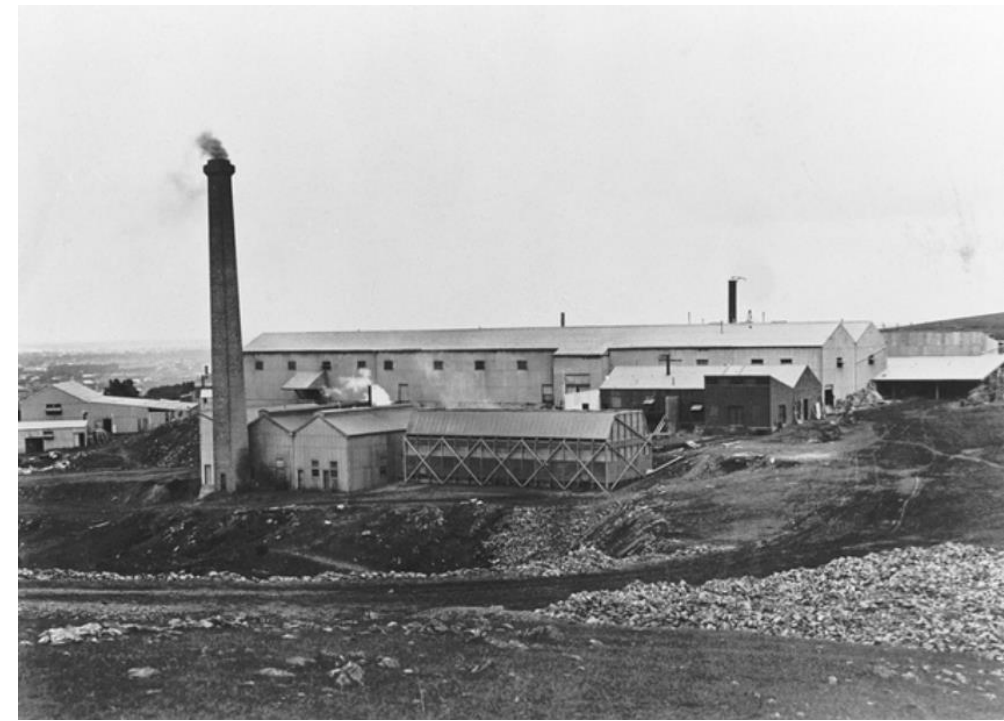


# Brighton Cement Works



BRIGHTON: Destruction caused by fire at the Brighton Cement Company works, 7th November 1909. The power house where the fire started is on the right.

The reconstructed premises of the Brighton Cement Company with a new power plant and the 120 feet chimney stack in foreground (1913)



Interior view of the Brighton Cement Company, showing bagged cement and three workmen (1913)

# Brighton Cement Works



The four mile rope-way communication between the Brighton Cement Works and Reynella Quarry (1920)



A Light Horse military camp at 'New Brighton' [now Seacliff] showing a large area of tents and mounted soldiers. The chimney in the background is part of Brighton Cement Works located on Ocean Boulevard near Brighton Road (1907)



Horse drawn wagon carrying bags of stone and men employed by the South Australian Portland Cement Company which was established at Brighton (1914)



# Brighton Cement Works



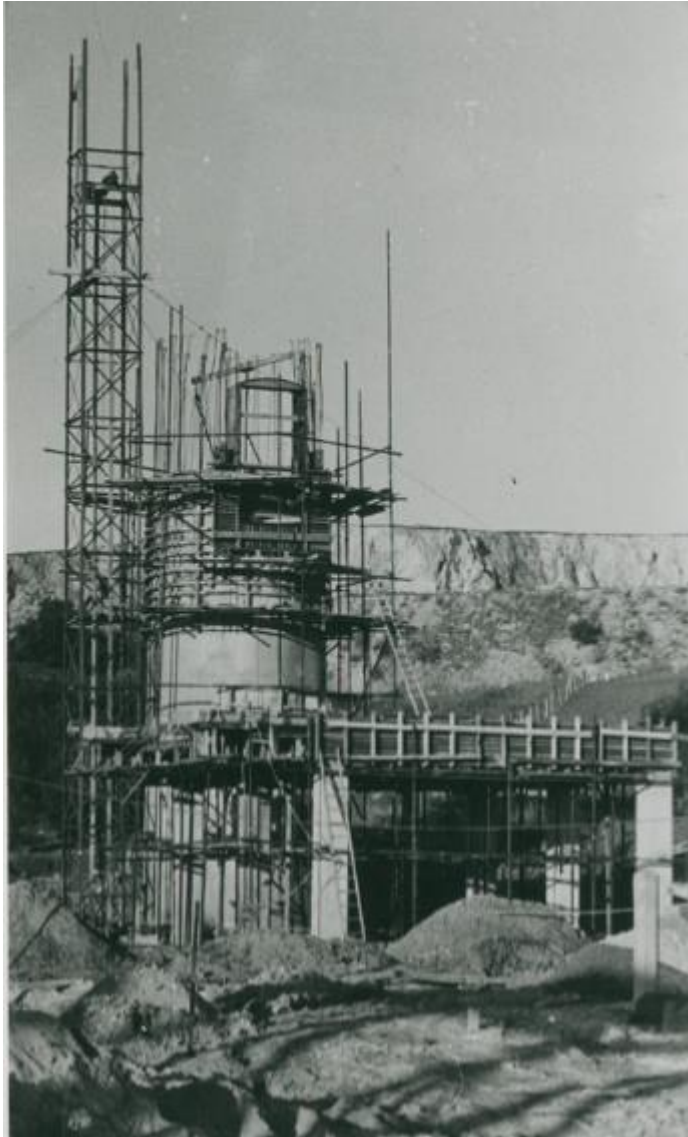
Aerial photograph, looking south, of Adelaide Brighton Cement works at Seacliff. The works are bordered by Ocean Boulevard and Scholefield Road. The area was known as 'Cement Hill'. Overhead cableway that operated between the Cement works and the Field River, Reynella, can be seen on the left of the image (1937)



Crushing Plant, Adelaide Brighton Cement works, looking south (1937)

# Brighton Cement Works

South Australian  
Portland Cement  
Company under  
construction.  
Approximately  
1925



A lorry fitted with solid rubber tyres which was the first motor vehicle to be used for delivery of cement packed in paper for the Brighton Cement Company in August 1927. Employees (left to right) William Davis; Walter Gilbertson; James Hamilton.





# Brighton Cement Works



Aerial photograph, looking south, of Adelaide Brighton Cement works at Seacliff. The works are bordered by Ocean Boulevard and Scholefield Road. The area was known as 'Cement Hill' (1937)



Work in progress at no.1 quarry, Marino for Brighton Cement Company

# Brighton Cement Works



22 horses driven by a lead driver, a rear driver and two 'whippers' taking a 30-ton steel mill to the Brighton Cement Works. A researcher has suggested that the lead driver is Phillip F. Smith. He died of Tetanus in 1931, aged 49. Taken by Advertiser photographer Harold Krischock, from Brighton Cement Works Hill (1930)

The great kiln at Brighton Cement Company was once the largest machine in South Australia (1938)

