

Build something great™



# BORAL QUARRIES TEVEN

> Community Consultative  
Committee meeting

19 November 2020  
Online via Microsoft Teams

# Agenda

- > **Welcome, administration and 'safety moment'**
- > **Quarry operations update**
- > **Environmental management and performance**
- > **General business**



# Welcome, administration and ‘safety moment’

- > Welcome and re-introductions
- > Safety moment
- > Previous meeting
  - > 15 July 2020
  - > Presentations and meeting notes from previous meetings are available from the quarry's website – [www.boral.com.au/tevenquarry](http://www.boral.com.au/tevenquarry)
- > Any matters arising?
  - > Morning glory weed on Beacon Rd side of site: revisited
  - > Labelling of blast vibration graph with pit locations.
- > Apologies for this meeting





Build something great™



# BORAL TEVEN QUARRY

> Quarry operations update



## Quarry development: basalt pit

- > We are currently looking at reshaping the northern wall of the basalt pit to create a new north 'ramp', allowing us to extract the existing central ramp.





## Quarry development: basalt pit

- > We are currently looking at reshaping the northern wall of the basalt pit to create a new north 'ramp', allowing us to extract the existing central ramp.



# Operations update

- > **Dust emissions control**
  - > **Cool fog** system is on site with installation starting **tomorrow (20 Nov)**.
- > **Concreting works around site**
  - > **On hold** pending **capital** being available.







Build something great™

# BORAL TEVEN QUARRY

> Environmental management and performance

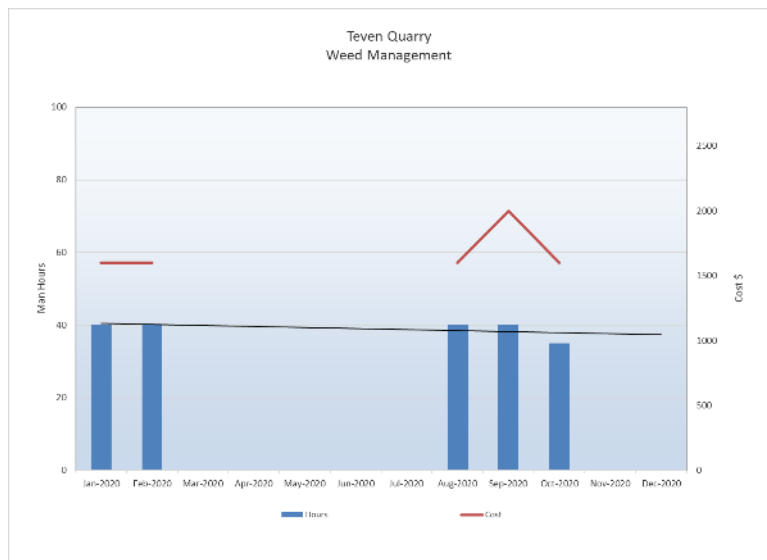




# Weed control areas and hours

## ■ Weed management

- Works ongoing.
- Main focus areas along property boundary and top of Hill
- Hours have increased
- Works to focus on targeted weeds and maintenance of weed growth



Areas worked

# Environmental monitoring – site averages



	Averaging	
	Period	g/m <sup>2</sup> /month <sup>a</sup>
<b>Deposited Dust<sup>b</sup></b>	Annual	4.00

a – Maximum total deposited dust level

b – Dust is assessed as insoluble solids as defined by AS3580.10.1-1991 (AM-19) (*At the nearest existing or likely future off-site sensitive receptor*)

Source: Table 7.1 (Page 28) of the Approved Methods for the Modelling and Assessment of Air Pollutants in NSW – DEC 2005

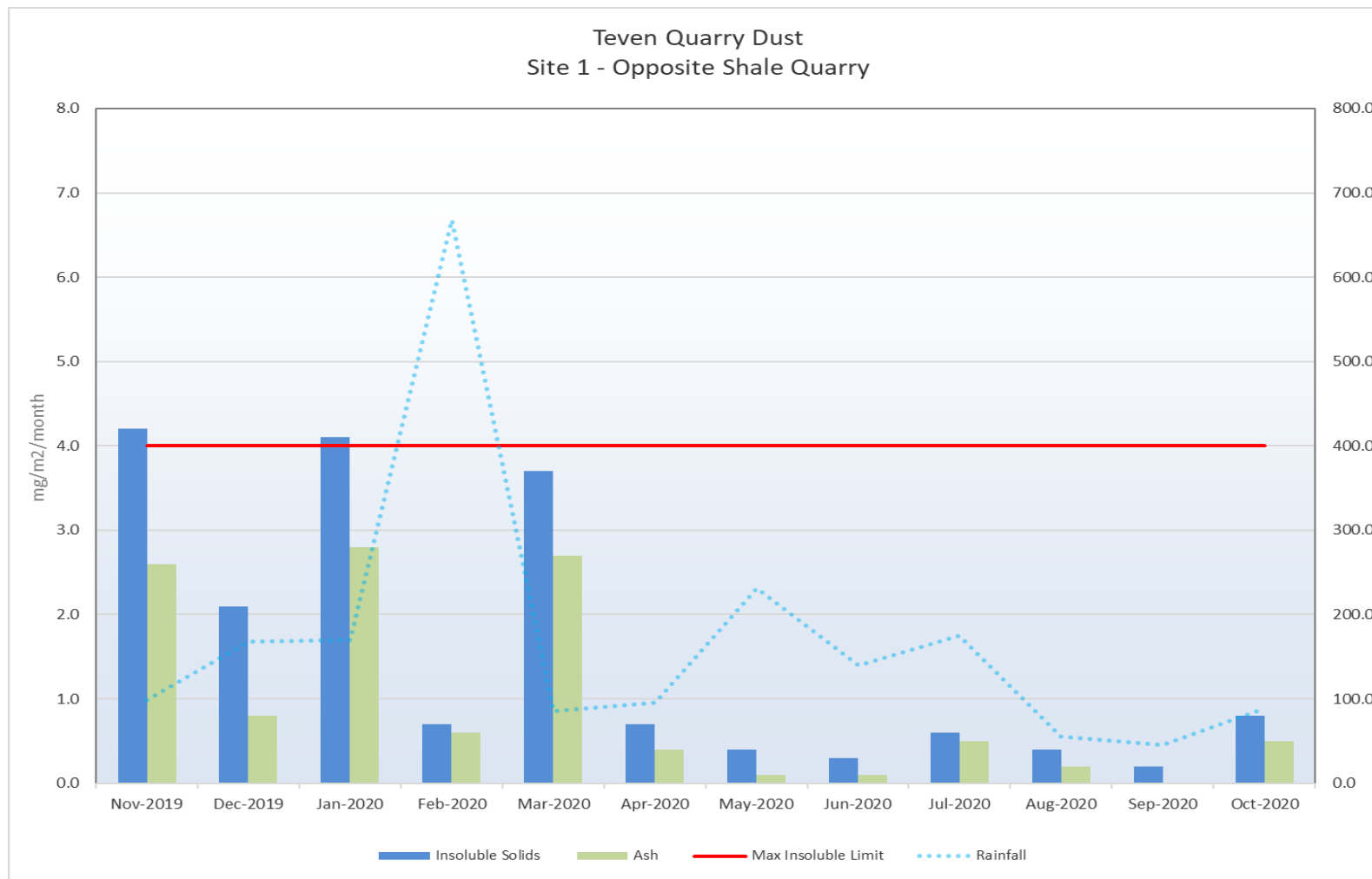
## Average Dust Deposition (Insoluble Solids)

Site 1	1.58 g/m <sup>2</sup>
Site 2	1.53 g/m <sup>2</sup>
Site 3	2.68 g/m <sup>2</sup>
Site 4	1.36 g/m <sup>2</sup>

As of February 2015 the Environmental Analysis Laboratory (EAL) at Southern Cross University has been collecting and analysing the Deposited Dust sample bottles at the Boral Teven Quarry

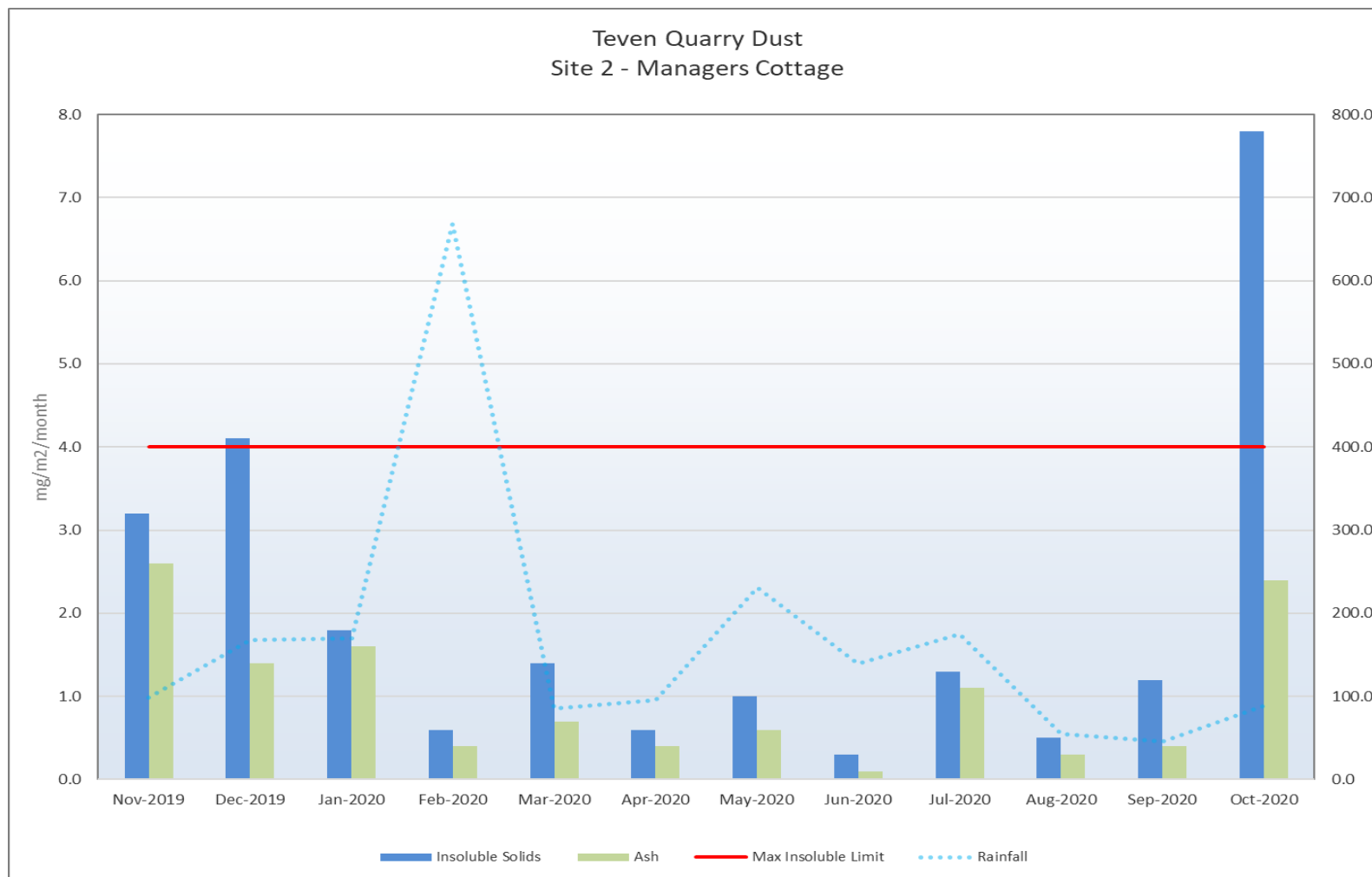


# Environmental dust monitoring – Site 1



Annual Average Dust Deposition (Insoluble Solids) 1.52  $\text{g} / \text{m}^2 / \text{month}$

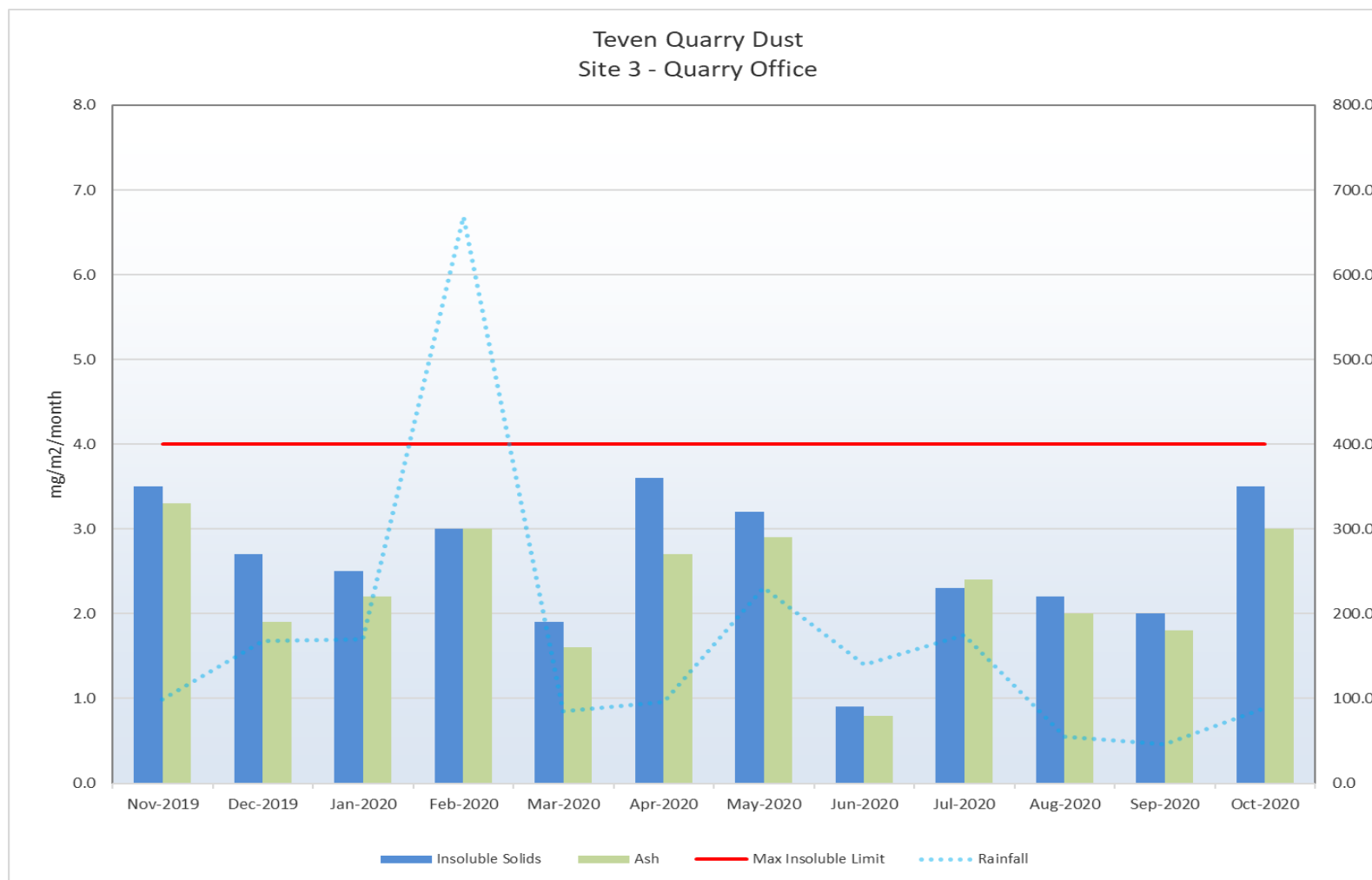
## Environmental dust monitoring – Site 2



Annual Average Dust Deposition (Insoluble Solids) 1.98 g / m<sup>2</sup> / month

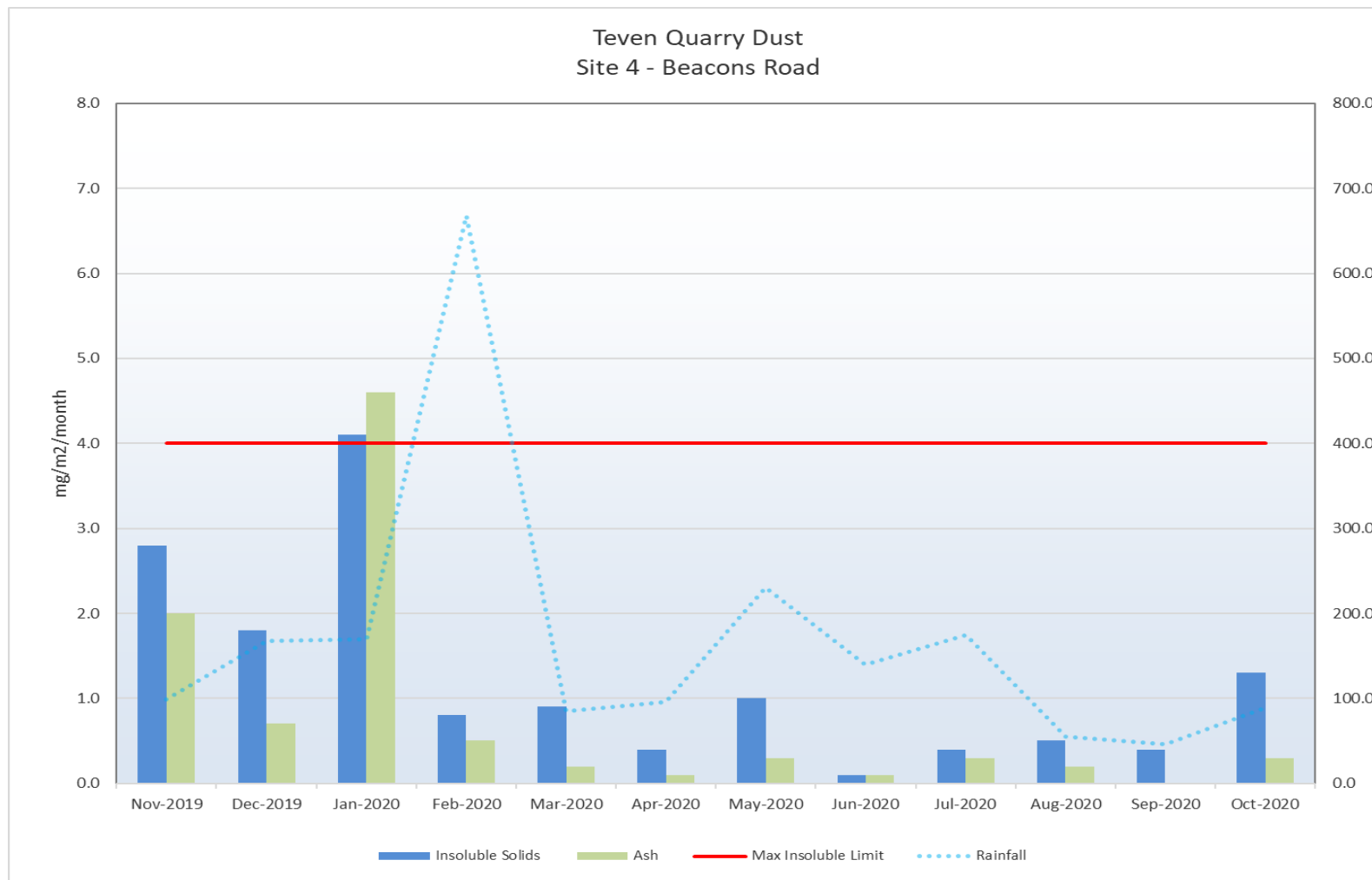


# Environmental dust monitoring – Site 3



Annual Average Dust Deposition (Insoluble Solids) 2.61 g / m<sup>2</sup> / month

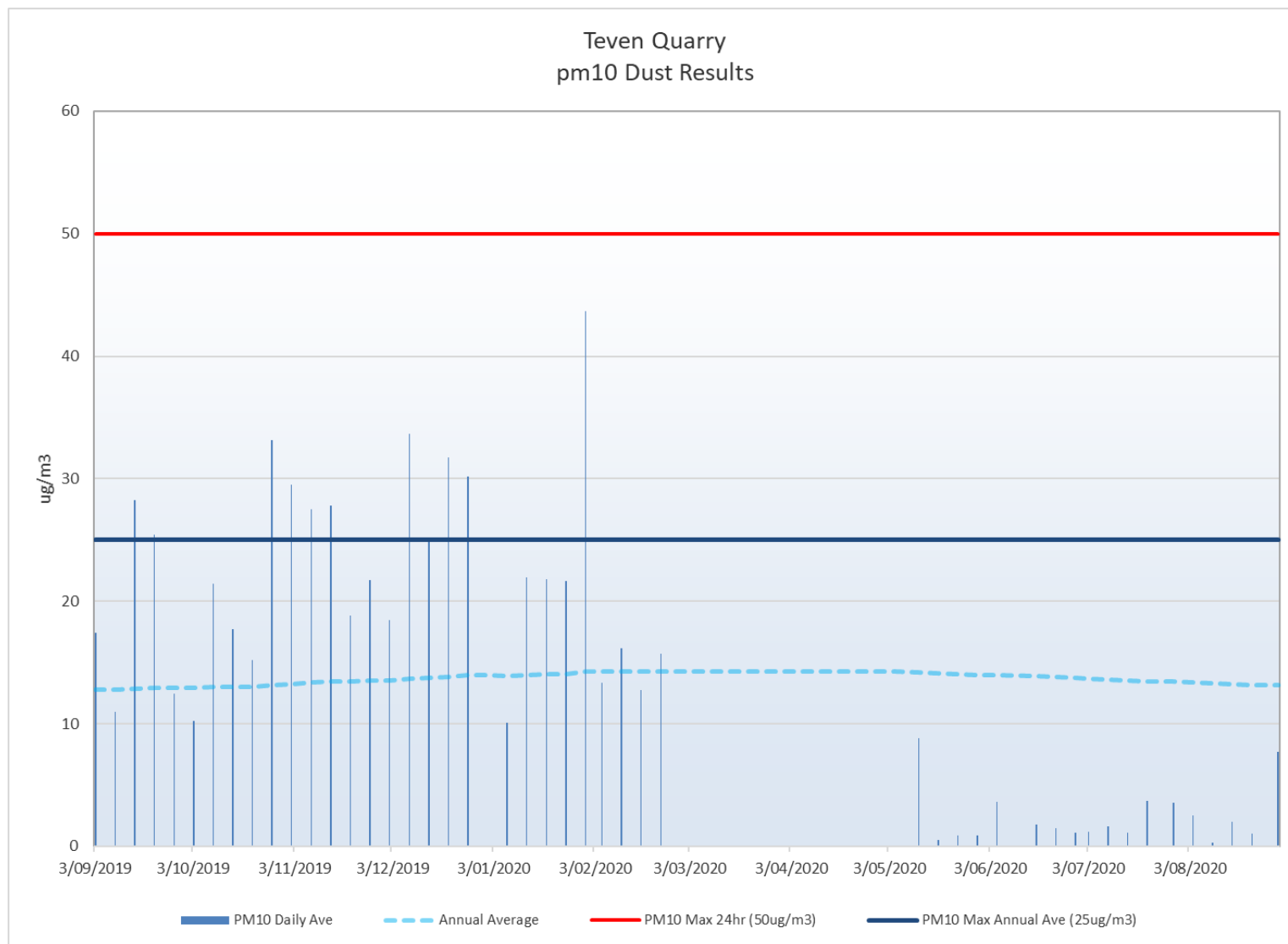
# Environmental dust monitoring – Site 4



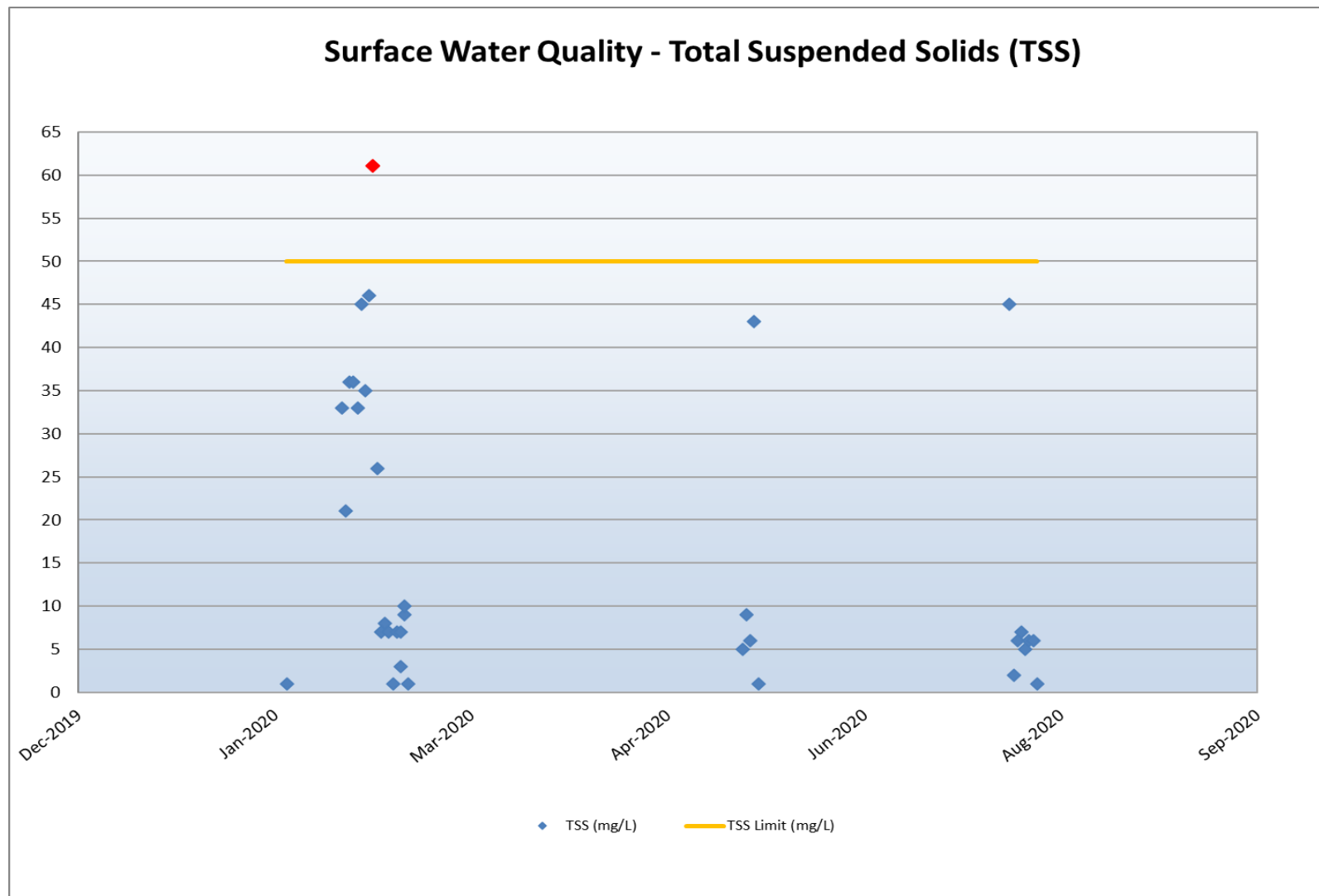
Annual Average Dust Deposition (Insoluble Solids) 1.21  $\text{g} / \text{m}^2 / \text{month}$



# Environmental PM10 monitoring

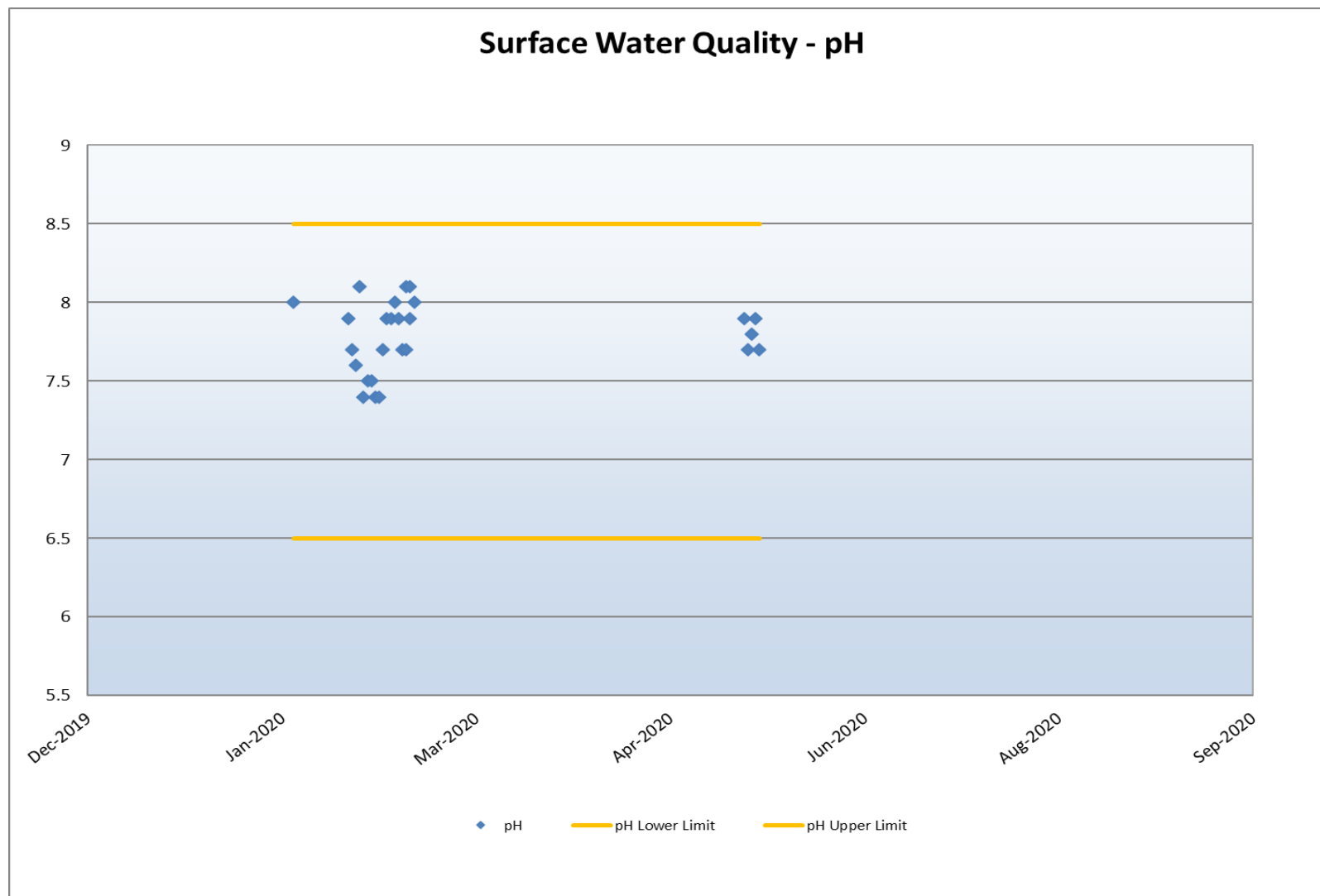


# Environmental water monitoring – TSS



Water quality limits for Boral Teven Quarry from EPA Licence No 2261

# Environmental water monitoring – pH



Water quality limits for Boral Teven Quarry from EPA Licence No 2261



# Blast Monitoring Results

Date	Blast ID	Time	Overpressure [dB]	Peak Vibration [mm/s]	Monitor
16 September 2020	BTQ-2013	11:10	107	1.81	Beacon Rd
28 October 2020	BTQ-2016	11:54	114.6	1.36	Beacon Rd
16 November 2020	BTQ-2017	11:36	107	1.49	Beacon Rd

## Boral Teven Quarry Blast Limits

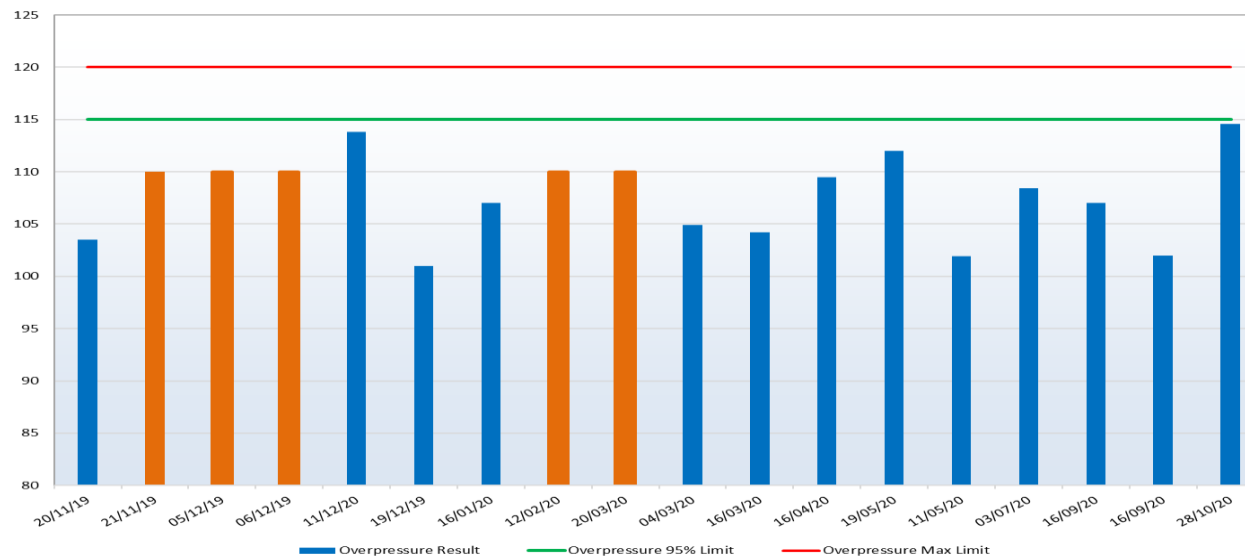
- Only 1 blast per day
- Blast between 9am to 4pm Monday to Friday
- **Vibration limits**
  - 5mm/s 95%
  - 10mm/s 100%
- **Overpressure Limits**
  - 115dB 95%
  - 120dB 100%

No Trigger set at:

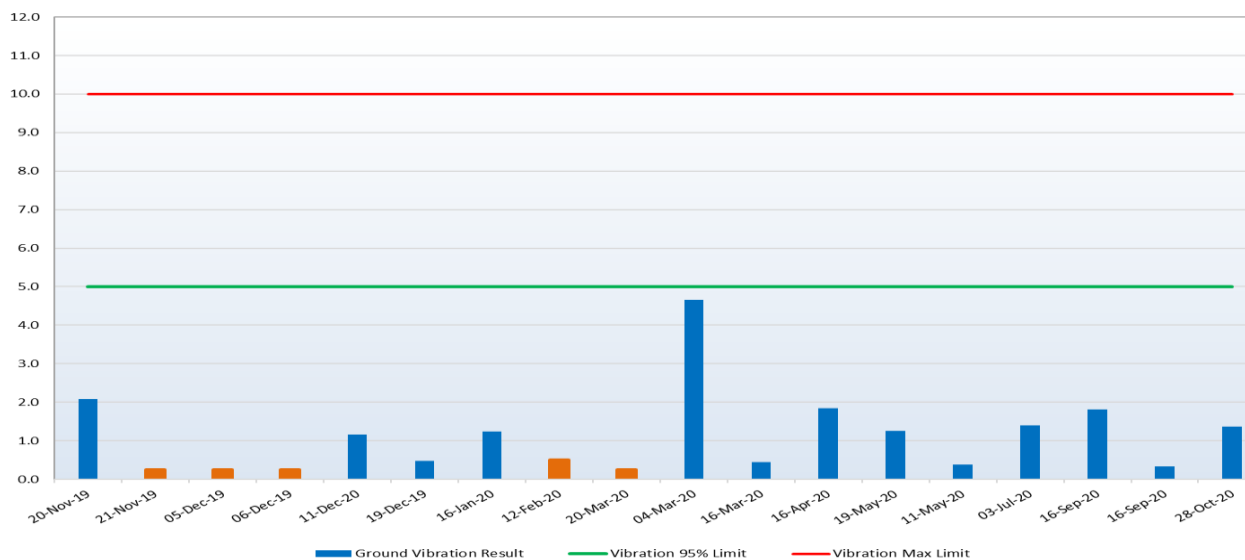
- >110db
- >0.51 mm/s



Teven Quarry  
Blast Overpressure (dB)



Teven Quarry  
Ground Vibration (mm/s)



Build something great™



# BORAL TEVEN QUARRY

> General business



# General business and contacts

- > **Items of general business**
  - > Annual sponsorship of **Lions Club Children's Christmas Party**
  - > Support for improving the condition of **Beacon Road** (email from **P Blackwood**)
- > **Next meeting: 2021 Whole of Community Meeting**
  - > **Mar/Apr 2021** with usual agenda including election of CCC community representatives for 2021-23.
- > **Boral Teven Quarry contacts:**
  - > **Phil (Dick) Pallisier** Quarry Manager  
6687 8360 / 0427 600 194 / [phillip.pallisier@boral.com.au](mailto:phillip.pallisier@boral.com.au)
  - > **Paul Jackson** Stakeholder Relations Manager  
4677 2946 / 0401 894 097 / [paul.jackson2@boral.com.au](mailto:paul.jackson2@boral.com.au)
  - > [www.boral.com.au/tevenquarry](http://www.boral.com.au/tevenquarry)
  - > [feedback@boral.com.au](mailto:feedback@boral.com.au)



Build something great™



# BORAL TEVEN QUARRY

> Thank you for your attendance