

Build something great™



BORAL QUARRIES TEVEN

> Community Consultative
Committee meeting

15 July 2020
Teven Quarry offices, Teven

Agenda

- > **Welcome, administration and ‘safety moment’**
- > **Quarry operations update**
- > **Environmental management and performance**
- > **Planning matters**
- > **General business**



Welcome, administration and ‘safety moment’

- > **Welcome and introduction**
 - > **Phil (Dick) Pallisier**, new Quarry Manager
 - > **Lucas Gregg**, new Quarry Supervisor
- > **Previous meeting**
 - > **21 November 2019**
 - > **Presentations** and **meeting notes** from previous meetings are available from the quarry’s website – www.boral.com.au/tevenquarry
- > **Any matters arising?**
 - > **Morning glory weed** on Beacon Rd side of site
- > **Apologies for this meeting**
- > **Safety moment**



Build something great™



BORAL TEVEN QUARRY

> Quarry operations update

Quarry Operations update

- > **Major and local jobs currently under supply**
 - > **Pacific Highway** upgrade program continues: **Ballina to Woolgoolga** remaining sections.
 - > **Aureus** development at **Skennars Head**: **14000 tonnes** drainage aggregates, **17000 tonnes** of road base and **17000 tonnes** of 40mm.
 - > Internal supplies to local **Boral Concrete** and **Asphalt** sites: **change of operational status** at **Alstonville** plant announced last week.



Picture credits:
1 – Transport for NSW
2 – Intrapac Property

Quarry Operations update

- > **Site improvements: Employee/visitor car park relocation**
 - > Car park at side of North Teven Rd **closed** and **relocated** to **inside** quarry property.
 - > Part of Boral-wide push to **eliminate pedestrian-vehicle interactions** (discussed at last meeting).
 - > New arrangements have resulted in other site changes: **new crossing, amenities**.



Quarry Operations update

> Other site improvements

- > New **HM400 dump truck**: better **efficiency** and **environmental credentials**.
- > Upgrading site **oil storage**.
- > Exploring installation of more **dust suppression** on processing plant: **cool fog** and **chute enclosure**.

> Personnel changes

- > **Rhys O'Brien** has moved on from the quarry, with **Lucas Gregg** in the process of being promoted to the **Quarry Supervisor** role.

> Mobile crushing days this year

- > **30** (**14** in February, **16** in March).

> Stripping completed

- > Circa **35000 tonnes** moved between **16 April** and **31 May**.





Build something great™

BORAL TEVEN QUARRY

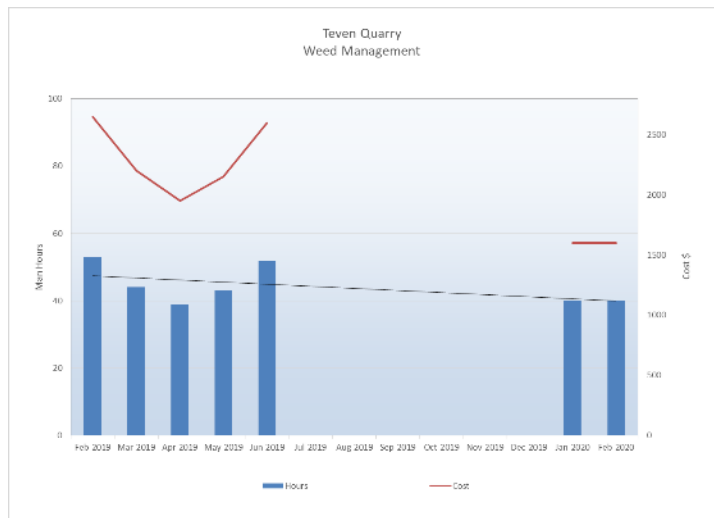
> Environmental management and performance



Weed control areas and hours

■ Weed management

- Works ongoing.
- Main focus areas along property boundary.
- Works have slowed during colder months.
- Works to focus on targetted weeds around property boundary and top of hill.



Areas worked

Environmental monitoring – site averages



	Averaging	
	Period	g/m ² /month ^a
Deposited Dust^b	Annual	4.00

a – Maximum total deposited dust level

b – Dust is assessed as insoluble solids as defined by AS3580.10.1-1991 (AM-19) (*At the nearest existing or likely future off-site sensitive receptor*)

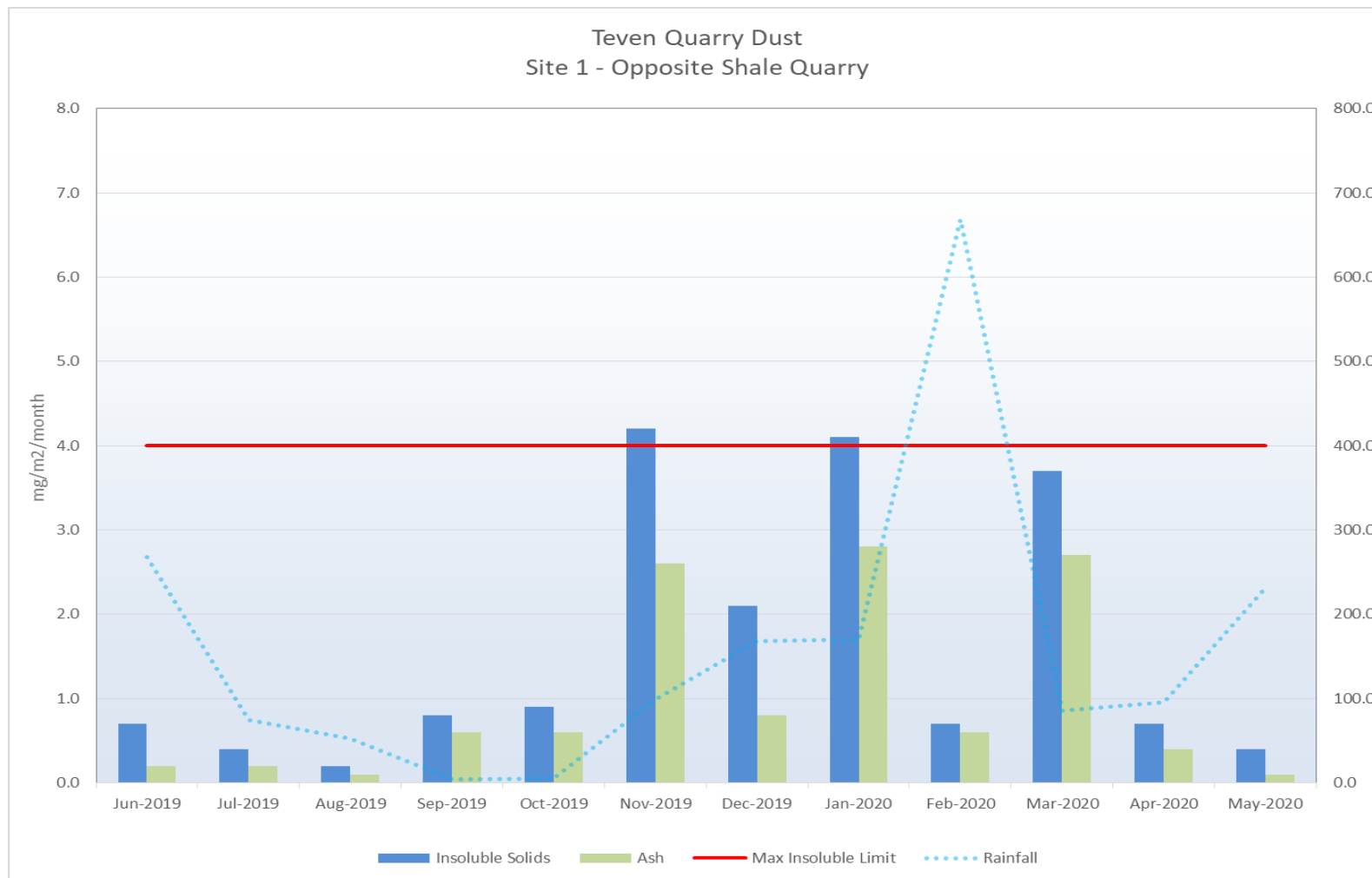
Source: Table 7.1 (Page 28) of the Approved Methods for the Modelling and Assessment of Air Pollutants in NSW – DEC 2005

Average Dust Deposition (Insoluble Solids)

Site 1	1.58 g/m ²
Site 2	1.53 g/m ²
Site 3	2.68 g/m ²
Site 4	1.36 g/m ²

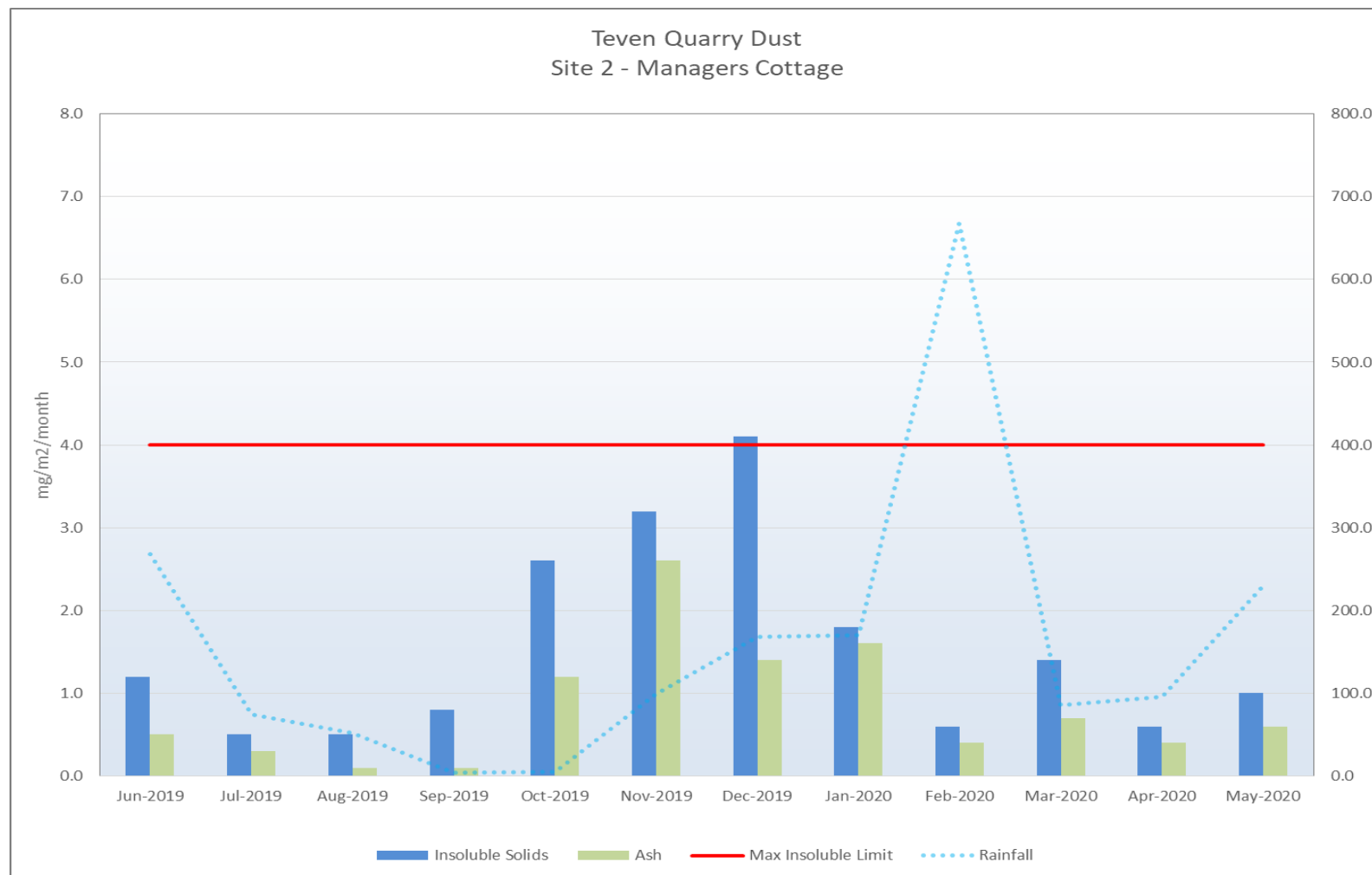
As of February 2015 the Environmental Analysis Laboratory (EAL) at Southern Cross University has been collecting and analysing the Deposited Dust sample bottles at the Boral Teven Quarry

Environmental dust monitoring – Site 1



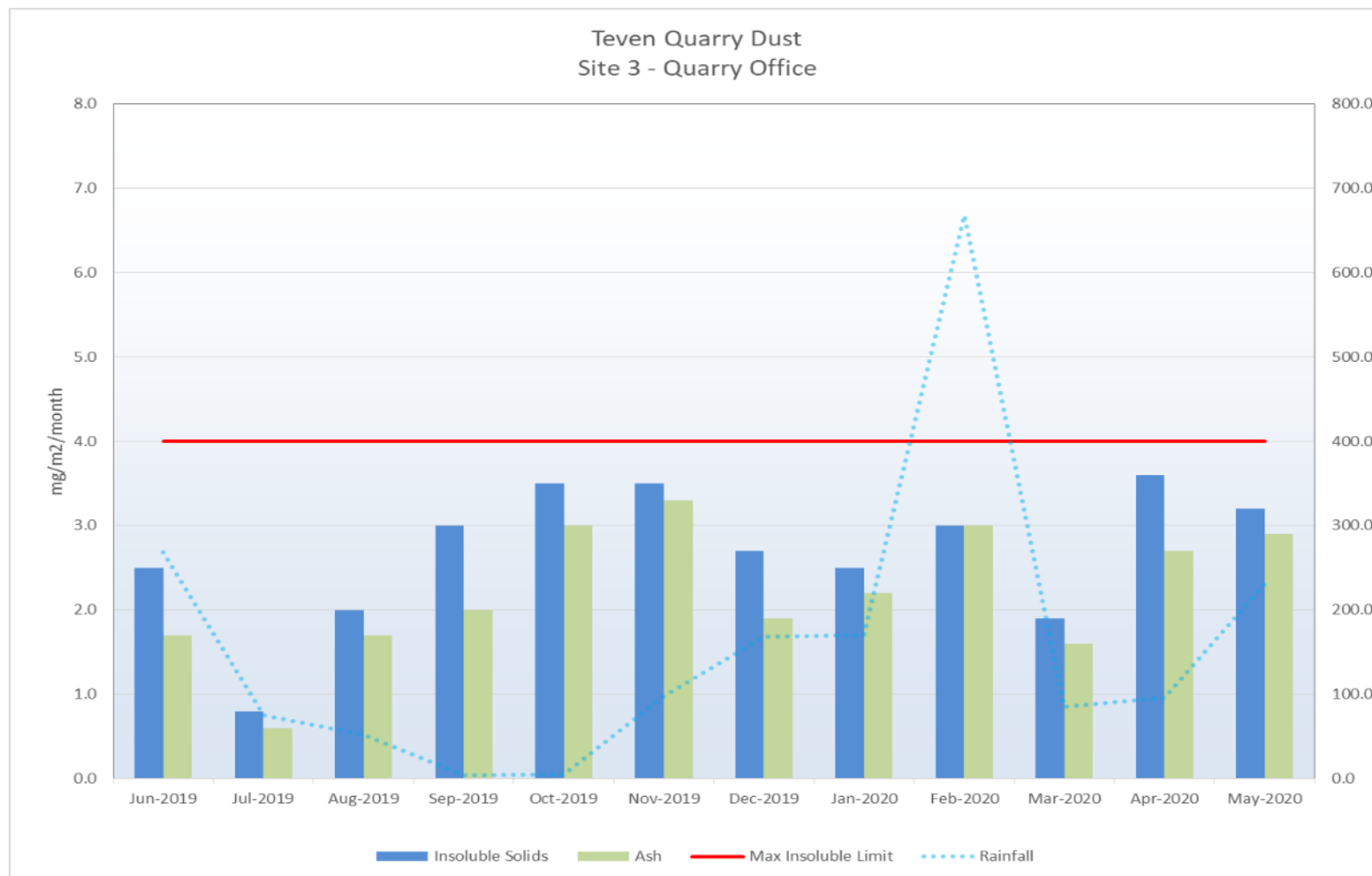
Annual Average Dust Deposition (Insoluble Solids) $1.58 \text{ g} / \text{m}^2 / \text{month}$

Environmental dust monitoring – Site 2



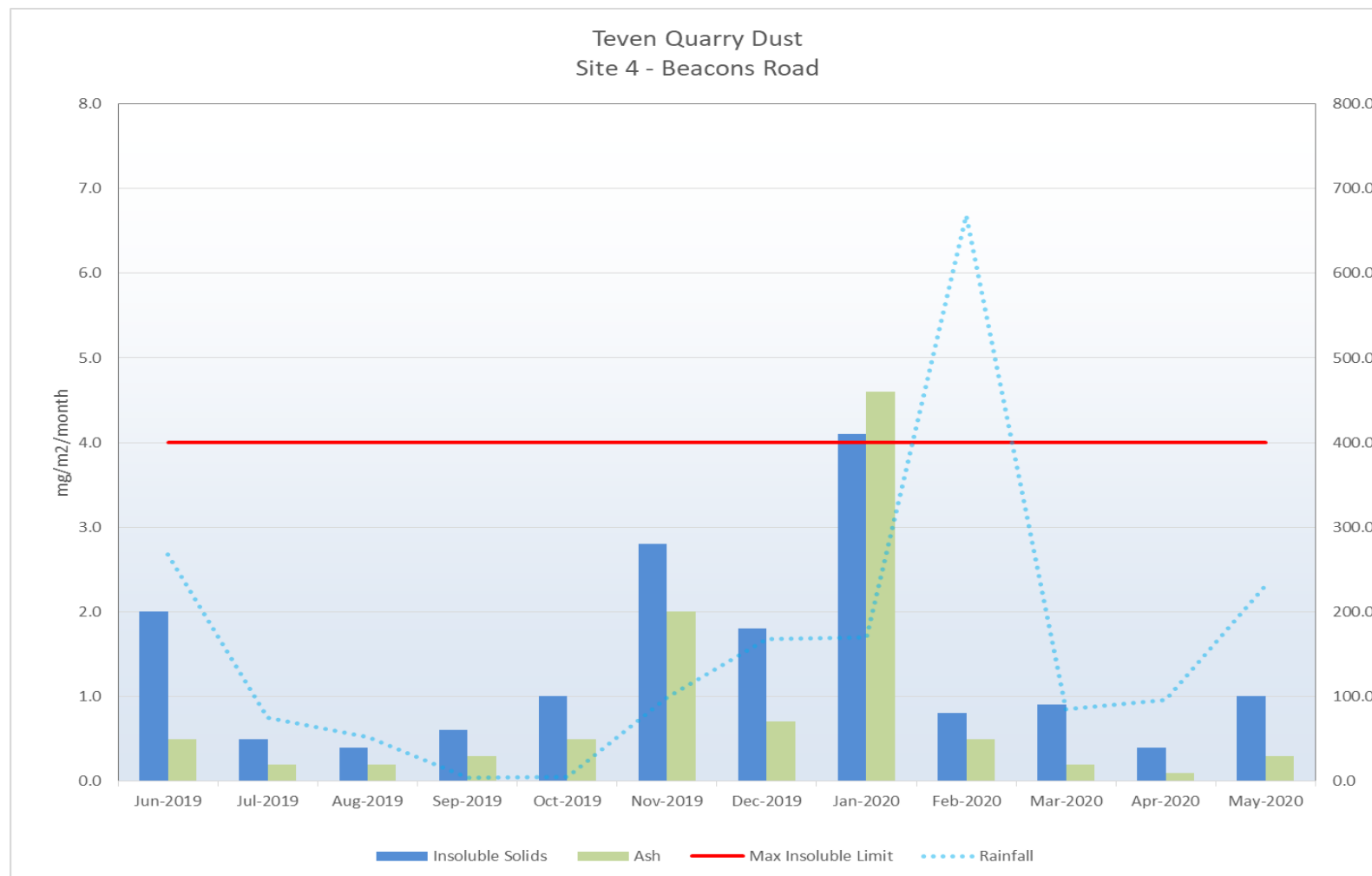
Annual Average Dust Deposition (Insoluble Solids) 1.53 g / m² / month

Environmental dust monitoring – Site 3



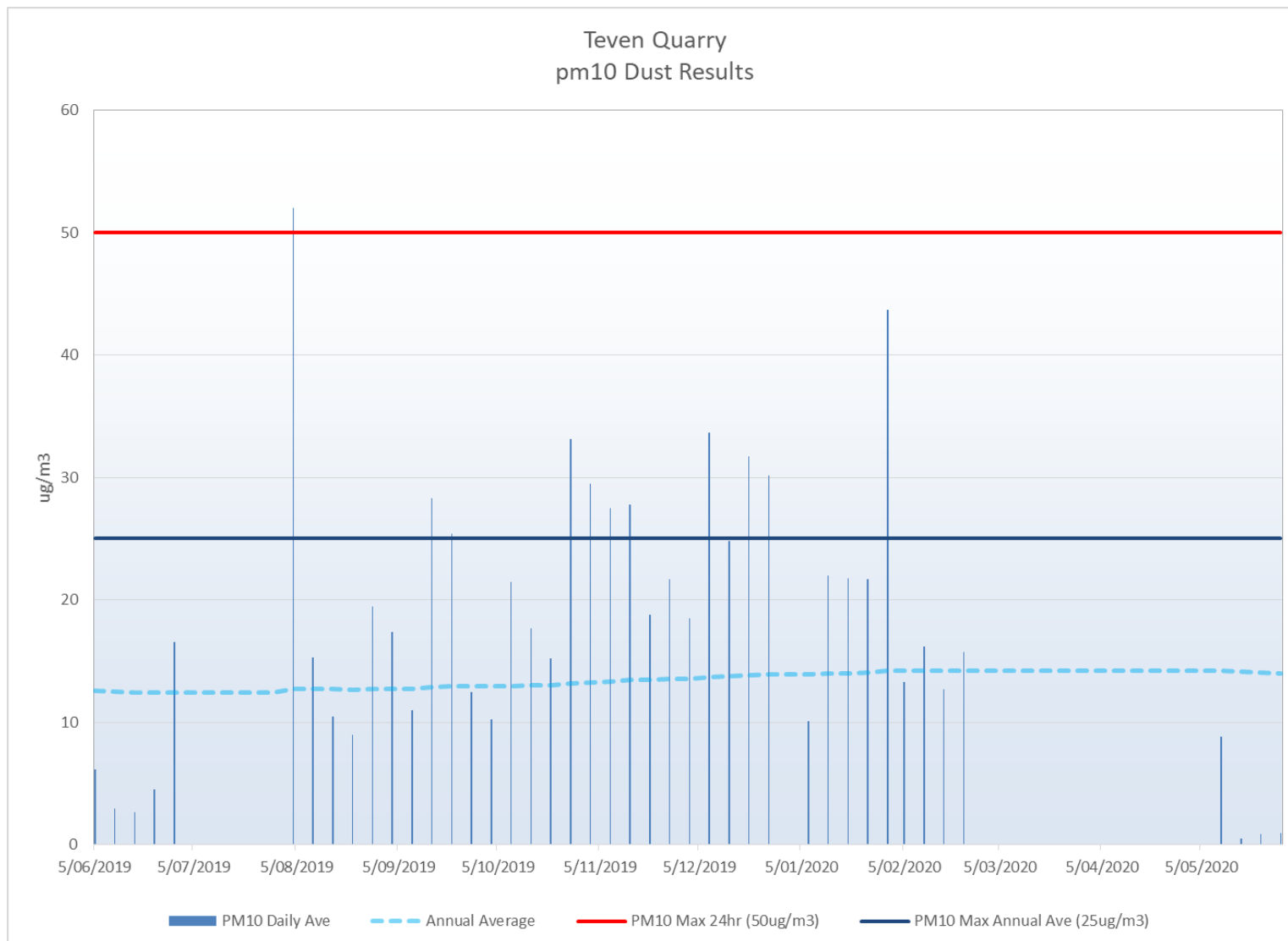
Annual Average Dust Deposition (Insoluble Solids) 2.68 $\text{g} / \text{m}^2 / \text{month}$

Environmental dust monitoring – Site 4

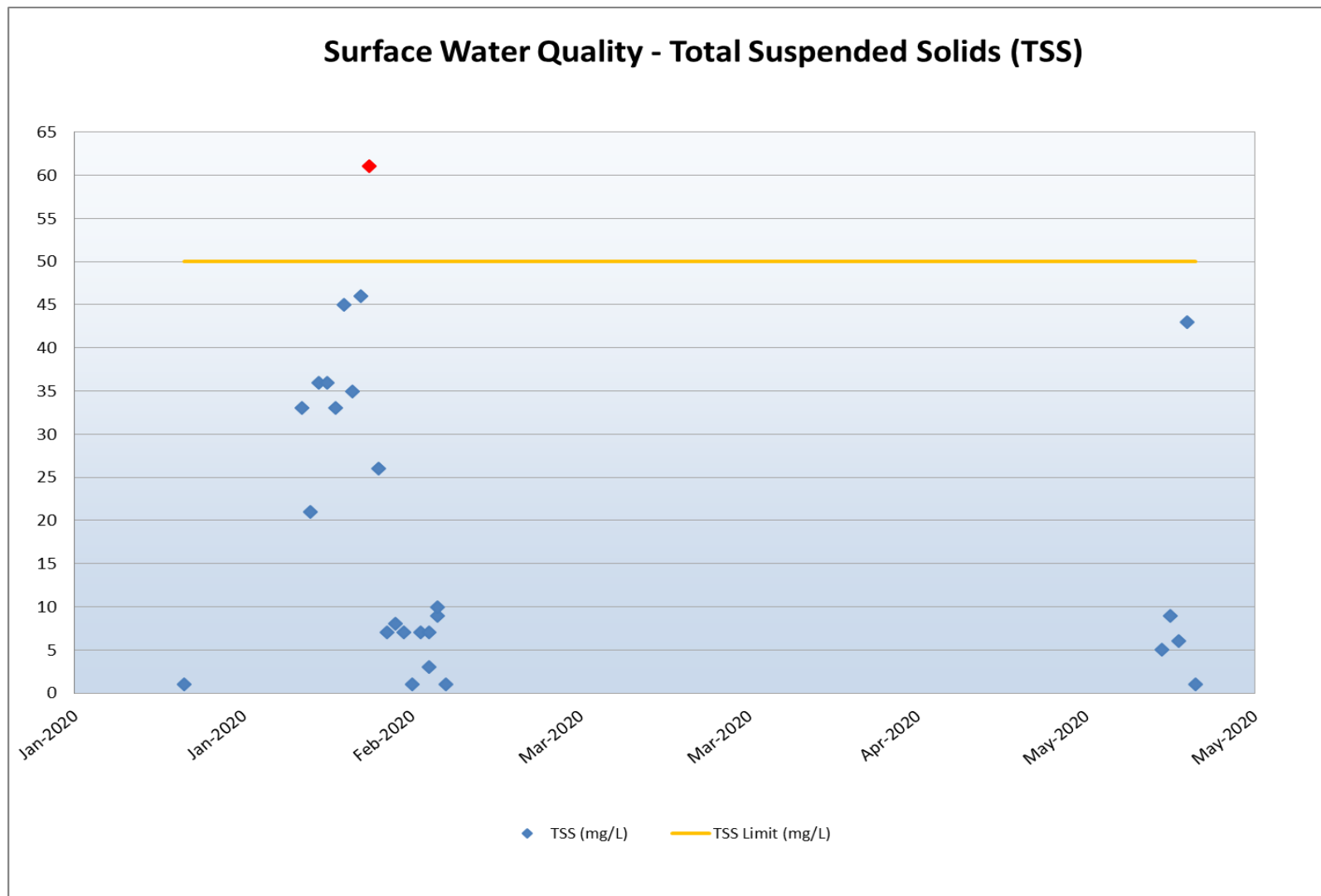


Annual Average Dust Deposition (Insoluble Solids) $1.36 \text{ g} / \text{m}^2 / \text{month}$

Environmental PM10 monitoring

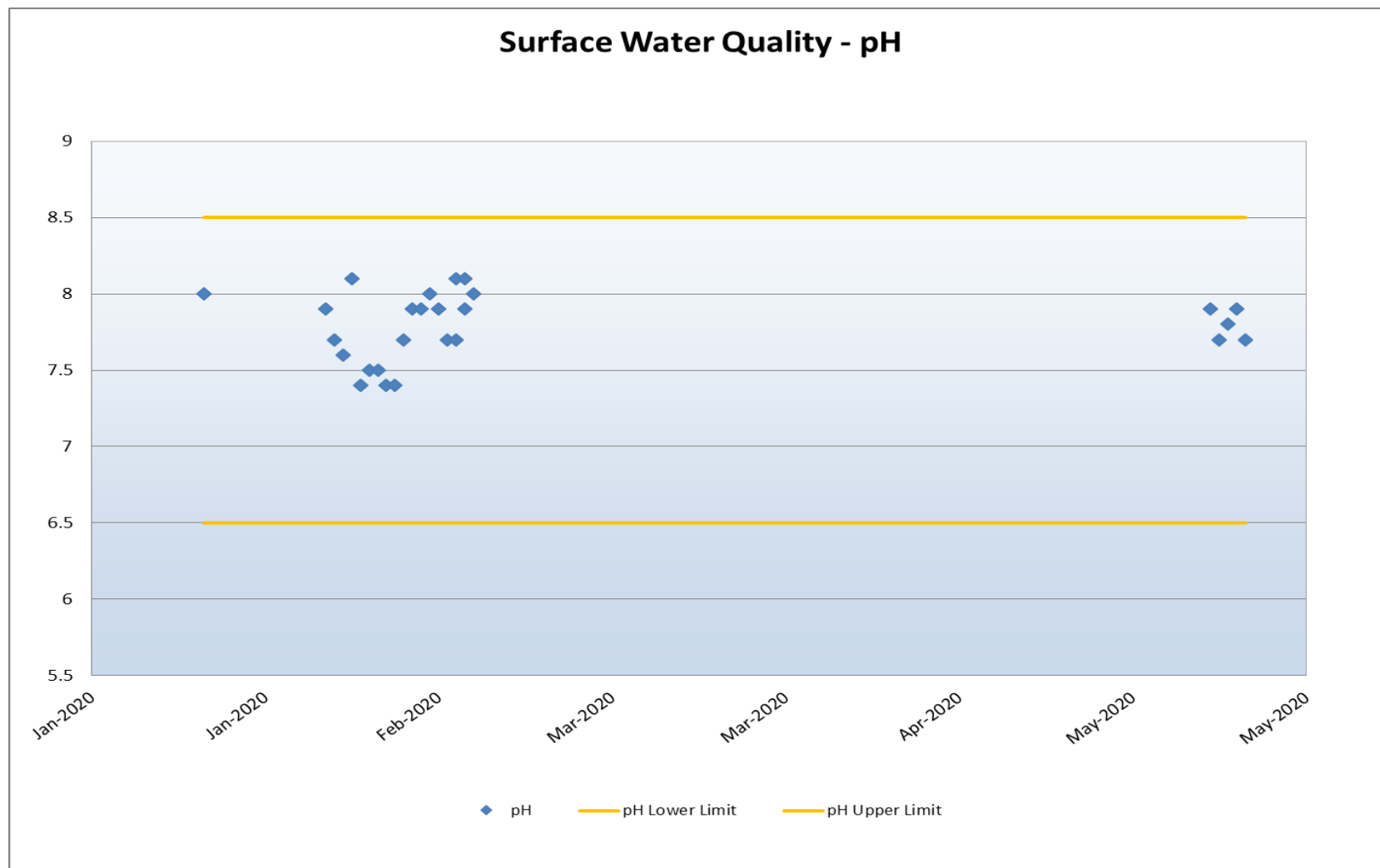


Environmental water monitoring – TSS



Water quality limits for Boral Teven Quarry from EPA Licence No 2261

Environmental water monitoring – pH



Water quality limits for Boral Teven Quarry from EPA Licence No 2261

Blast Monitoring Results

Date	Time	Overpressure [dB]	Peak Vibration [mm/s]
Wednesday, 20 November 2019	10:21:00	103.5	2.1
Thursday, 21 November 2019	11:31:00	No Trigger	No Trigger
Thursday, 5 December 2019	10:25:00	No Trigger	No Trigger
Friday, 6 December 2019	10:00:00	No Trigger	No Trigger
Friday, 11 December 2020	13:04:00	113.8	1.163
Thursday, 19 December 2019	13:10:00	101	0.478
Thursday, 16 January 2020	11:02:00	107	1.242
Wednesday, 12 February 2020	14:55:00	No Trigger	No Trigger
Friday, 20 March 2020	13:04:00	No Trigger	No Trigger
Wednesday, 4 March 2020	13:54:00	104.9	4.653
Monday, 16 March 2020	13:10:00	104.2	0.452
Thursday, 16 April 2020	14:21:00	109.5	1.844
Tuesday, 19 May 2020	13:00:00	112	1.251
Monday, 11 May 2020	13:03:00	101.9	0.387
Friday, 3 July 2020	11:50:00	108.4	1.404

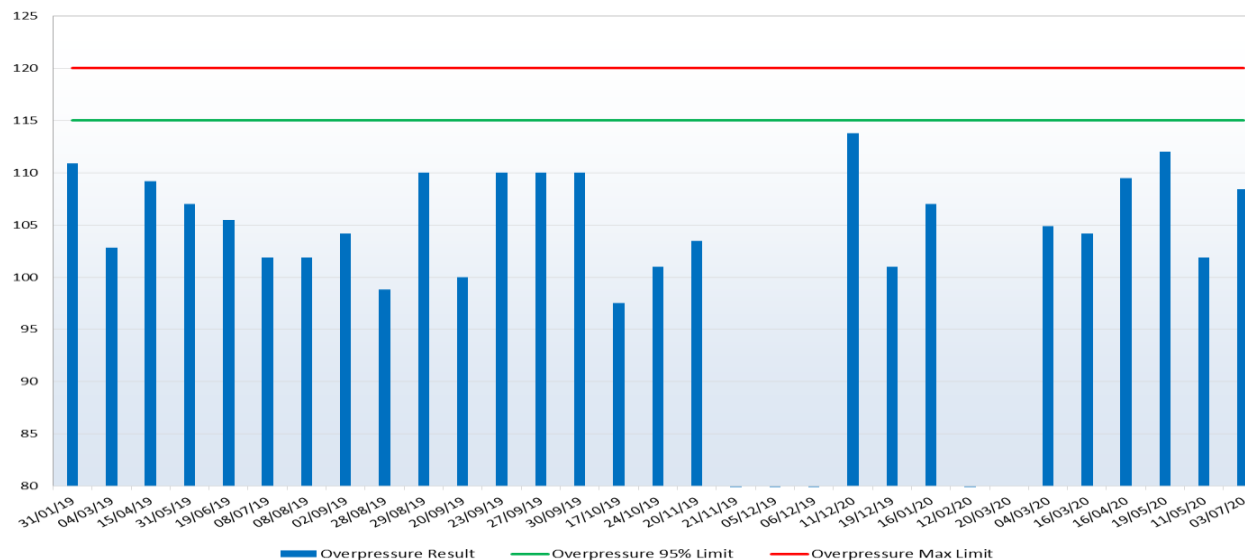
Boral Teven Quarry Blast Limits

- Only 1 blast per day
- Blast between 9am to 4pm Monday to Friday
- **Vibration limits**
 - 5mm/s 95%
 - 10mm/s 100%
- **Overpressure Limits**
 - 115dB 95%
 - 120dB 100%

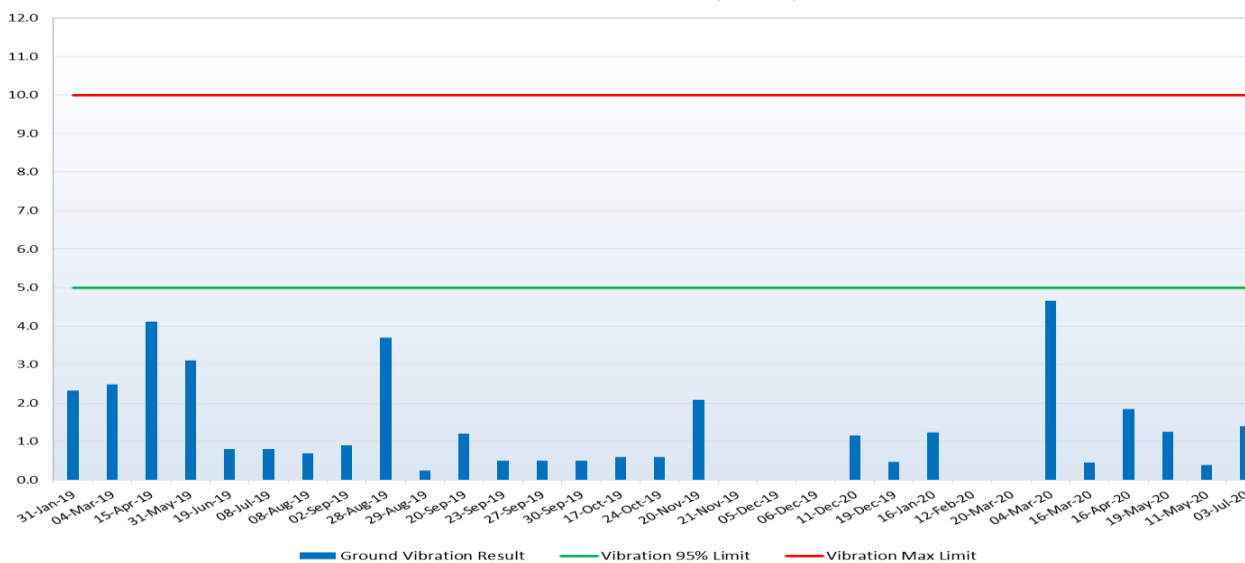
No Trigger set at:

- >110db
- >0.51 mm/s

Teven Quarry
Blast Overpressure (dB)



Teven Quarry
Ground Vibration (mm/s)



Build something great™



BORAL TEVEN QUARRY

> Planning matters

‘One way’ traffic system

- > Drawings have been submitted to Ballina Council and we are now awaiting approval.



Build something great™



BORAL TEVEN QUARRY

> General business

General business and contacts

- > Items of general business
- > Next meeting of the Community Consultative Committee
 - > **Nov 2020** per usual schedule.
- > Boral Teven Quarry contacts:
 - > **Phil (Dick) Pallisier** Quarry Manager
6687 8360 / 0427 600 194 / phillip.pallisier@boral.com.au
 - > **Paul Jackson** Stakeholder Relations Manager
4677 2946 / 0401 894 097 / paul.jackson2@boral.com.au
 - > www.boral.com.au/tevenquarry
 - > feedback@boral.com.au



Build something great™



BORAL TEVEN QUARRY

> Thank you for your attendance