



Building
something
great

Environmental Monitoring Report

Real-time Air Quality monitoring

Dunmore Quarry

December 2025

This monitoring report is to satisfy the requirements of Section 66 (6) of the Protection of the Environment and Operations Act 1997, to make available, within 14 days of request, any monitoring data that relates to pollution under an Environment Protection Licence.

The monitoring of pollutants provided in this report is undertaken as per the requirements of Environment Protection Licence 77 (EPL 77 – Boral Dunmore Quarry)

This report provides environmental monitoring data for Dunmore Quarry for August - November 2025.

Dunmore Quarry Information	
Premise Details	Boral – Dunmore Quarry
Address	Princes Highway, Dunmore NSW, 2529
Licensee	Boral Resources (NSW) PTY LTD
EPL N ^o	77
EPL Location	https://apps.epa.nsw.gov.au/prpoeoapp/Detail.aspx?instid=77&id=77&option=licence&searchrange=licence&range=POEO%20licence&prp=no&status=Issued

Real time air quality monitoring commenced at Dunmore Quarry in September 2025 as part of an agreed Pollution reduction Program with EPA.

Monitoring data in this report therefore relates to the monitoring undertaken in the reporting period for Real-time Air Quality Monitoring.



Building
something
great

Realtime Air Quality Monitoring

Realtime air quality monitoring is conducted as per condition M2.2 of EPL 77. The real time air quality monitoring results for the reporting period is summarised below.

Sample Period: November 2025

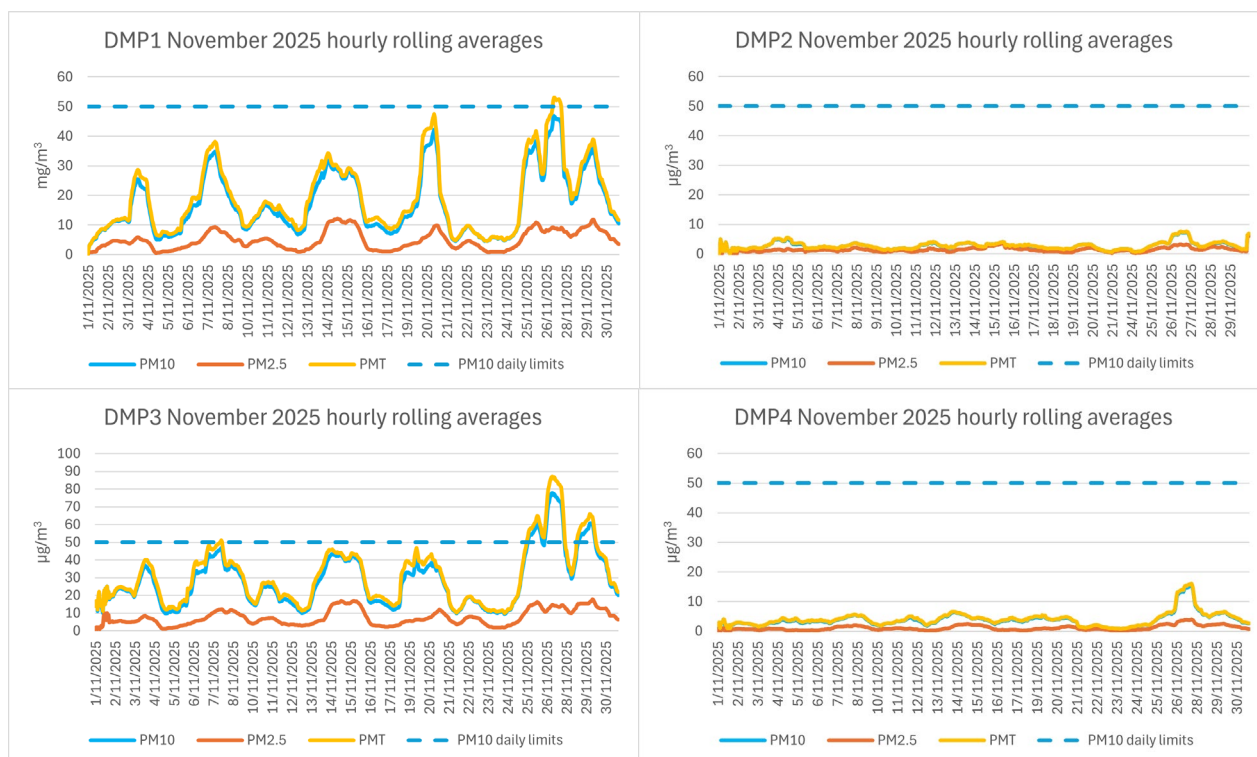
Licensee: Dunmore Quarry

Licensee Address: Princes Hwy, Dunmore NSW 2529

EPL No: 77

Qualifications related to real-time air quality monitoring: Air Emissions Monitoring – Continuous Ambient Dust

Note: PMT represents TSP (Total Suspended Particulates)



Results:

DMP	Month	Daily averages			Daily limit	Annual limit			Comments
		PM10	PM2.5	TSP		PM10	PM2.5	TSP	
		µg/m³	µg/m³	µg/m³		µg/m³	µg/m³	µg/m³	
DMP1	Nov-25	17.31	4.85	19.11	50	25	8	90	
DMP2	Nov-25	2.85	1.59	2.95	50	25	8	90	
DMP3	Nov-25	28.63	7.50	31.31	50	25	8	90	
DMP4	Nov-25	3.85	1.07	4.07	50	25	8	90	



**Building
something
great**

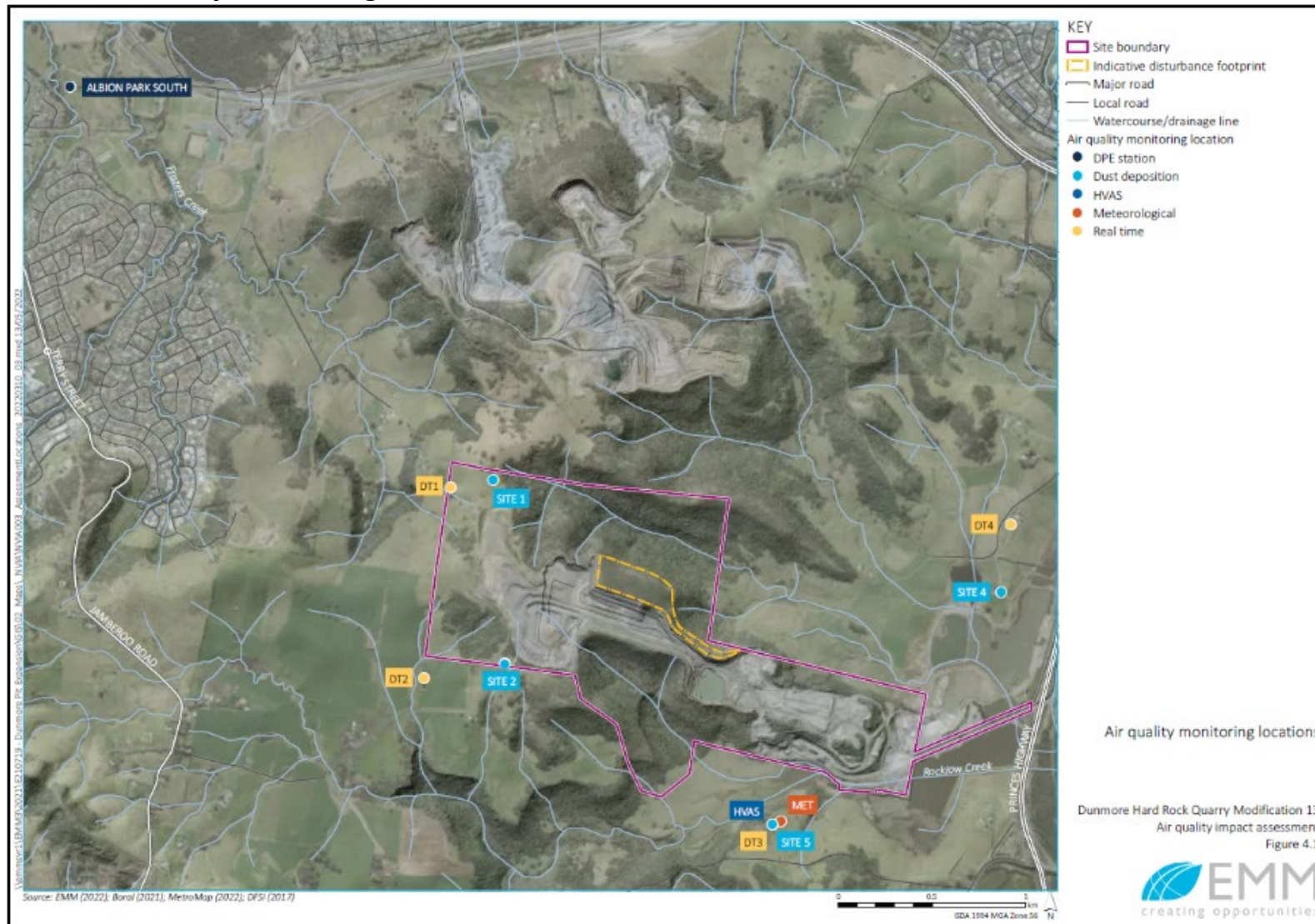
Historical Data

DMP	Month	Daily averages			Daily limit PM10 µg/m³	Annual limit			Comments
		PM10	PM2.5	PMT		PM10	PM2.5	PMT	
		µg/m³	µg/m³	µg/m³		µg/m³	µg/m³	µg/m³	
DMP1	Oct-25	16.93	5.32	18.58	50	25	8	90	
DMP2	Oct-25	2.45	1.37	2.59	50	25	8	90	
DMP3	Oct-25	24.72	7.62	26.80	50	25	8	90	
DMP4	Oct-25	5.05	1.53	5.28	50	25	8	90	
DMP1	Sep-25	11.50	3.23	12.79	50	25	8	90	
DMP2	Sep-25	0.20	0.13	0.20	50	25	8	90	Unit online but not functioning properly (3 – 29 Sept)
DMP3	Sep-25	19.71	6.33	21.57	50	25	8	90	
DMP4	Sep-25	2.43	0.51	2.61	50	25	8	90	
DMP1	Aug-25	6.79	2.17	7.28	50	25	8	90	
DMP2	Aug-25	0.01	0.00	0.01	50	25	8	90	
DMP3	Aug-25	12.01	3.99	12.82	50	25	8	90	
DMP4	Aug-25	1.32	0.30	1.39	50	25	8	90	



Building
something
great

Dunmore Quarry Monitoring Locations.





Building
something
great



LEGEND

- | | | | |
|------------------------|----------------------------------|---------------------------------|-----------------------------------|
| Site Boundary | Water Discharge Monitoring Point | Deposited Dust Monitoring Point | Weather Analysis Monitoring Point |
| Blast Monitoring Point | High Volume Air Sampling Point | | |