



**Building
something
great**

Pollution Incident Response Management Plan



Berrima Cement Works

Taylor Avenue, New Berrima NSW 2577

Version 13: 15th November 2024

Document Control Sheet

Current Rev.	Date Implemented	PIRMP Test Schedule	Date for Next Review
13	15/11/2024	12 months	November 2025

Rev.	Date	Prepared by	Approved By	Revision Details
01	December 2012	Karin Schianetz	Stuart Hutchings	Document Created
02	24 January 2013	Karin Schianetz	Stuart Hutchings	Included reference to Map 60059
2.1	September 2013	Alex Wnorowski	Stuart Hutchings	Changes reflecting new company structure
03	September 2014	Alex Wnorowski	Stuart Hutchings	Annual Review
04	September 2015	Alex Wnorowski	Stuart Hutchings	Annual Review
05	March 2017	Micheal Curley	Stuart Hutchings	Major Review
06	March 2018	Ibrahim Mulhern	Stuart Hutchings	Annual review
07	March 2019	Beinda Prideaux	Stuart Hutchings	Updated Staff contact details
08	April 2020	Belinda Prideaux	Dean Beltrame	Over haul document to meet new EPA PIRMP guidelines
09	April 2021	Greg Johnson	Dean Beltrame	Annual review, update staff, include gas risk
10	April 2022	Ben Williams	Dean Beltrame	Update to new EPA PIRMP guidelines Update formatting Update staff contacts Update maps
11	April 2023	Sharon Makin	Dean Beltrame	Annual Review Update to formatting – new branding Update staff contacts
12	June 2023	Sharon Makin	Dean Beltrame	Addition of Incident 7 for fire and resulting smoke updated to include DPE comments
13	November 2024	Sharon Makin	Waqas Ali	Annual review. Update following drill, update contact details



**Building
something
great**

Contents

PART A: Legislative Requirements

1. Document Purpose and Scope	4
2. Legislative Requirements	5
3. Definition of a 'Pollution Incident'	8
4. Site Location and Layout	9
5. Potential Polluting Substances	11
6. Staff Roles and Responsibilities	20
7. Internal Pollution Incident Reporting	20
8. External Pollution Incident Reporting	21
8.1. Pollution Incident Authority Contact List	22
8.2. Community Notification Contact List	23
9. Incident Response Training	25
10. PIRMP Testing	26
11. PIRMP Review	26
11.1. Event Based	26
11.2. Time Based	26
12. Risk Assessment of Potential Incidents	26
13. Incident 1: Diesel or Hydrocarbon Spill	30
14. Incident 2: Excessive Airborne Dust	33
15. Incident 3: Dam Failure	35
16. Incident 4: Electrostatic Precipitator abnormal operation	37
17. Incident 5: Gas Leak	39
18. Incident 6: Loss of Radioactive Material	41
19. Incident 7: Excessive Smoke from Fire	43
20. Pollution Incident Notification Log	45
21. Immediate Notification Sheet	48



**Building
something
great**



PART A:

Legislative Requirements



**Building
something
great**

- Provide direction to the staff in responding to pollution incidents at the BCW operations;
- Ensure timely communication about a pollution incident is provided to staff at the premises, the Environment Protection Authority (EPA), other relevant authorities specified in the Protection of the Environment Legislation Amendment Act (POELA Act) (including Wingecarribee City Council, NSW Ministry of Health, Safework NSW, and Fire and Rescue NSW) and persons outside the operations who may be affected by the impacts of a pollution incident that is not trivial;
- Minimise and control the risk of a pollution incident at Dunmore Quarry by identifying key risks and planned actions to minimise and manage those risks;
- Detail the training requirements for this plan, identifying persons responsible for implementing it, and ensuring that the plan is regularly tested for accuracy, currency and suitability.
- This PIRMP must be followed by employees, contractors and visitors of BCW, to assist in the early response to, and reporting of, a pollution incident. A hard copy of the current PIRMP is kept at BCW and is made publically available on the Boral environmental reporting website:

<https://www.boral.com.au/what-we-do/environmental-reporting>

Hard copies of the PIRMP are located at the following locations onsite:

- Reception
- Control Room
- ATW Office
- Group Engineering/Procurement
- Boral Concrete – Diesel Loco Shop
- First Aid Room

This document accompanies the Berrima Emergency Response Plan CEM-BER-OHS-1 which details immediate response actions such as evacuation and first aid procedures in a range of emergency scenarios.

2. Legislative Requirements

The specific requirements for a Pollution Incident Response Management Plan (PIRMP) are set out in Part 5.7A of the POEO Act and the Protection of the Environment Operations (General) Regulation 2009 (POEO(G) Regulation).

Part 3A of the POEO Act and the Protection of the Environment Operations (General) Regulation 2009 (POEO(G) Regulation) describes specific components and requirements of a PIRMP. Table 1 provides the reference to these requirements and the location these are addressed in the document.



**Building
something
great**

Table 1 Summary of Legislative Requirements

Section/Clause	Requirement	Location in PIRMP
Part 5.7A POEO Act 1997		
147	<p>(1) For the purposes of this Part—</p> <p>(a) harm to the environment is material if—</p> <p>(i) it involves actual or potential harm to the health or safety of human beings or to ecosystems that is not trivial, or</p> <p>(ii) it results in actual or potential loss or property damage of an amount, or amounts in aggregate, exceeding \$10,000 (or such other amount as is prescribed by the regulations), and</p> <p>(b) loss includes the reasonable costs and expenses that would be incurred in taking all reasonable and practicable measures to prevent, mitigate or make good harm to the environment.</p> <p>(2) For the purposes of this Part, it does not matter that harm to the environment is caused only in the premises where the pollution incident occurs.</p>	Section 3
153A	The holder of an environment protection licence must prepare a pollution incident response management plan that complies with this Part in relation to the activity to which the licence relates.	EPL 1698 and this document
153C	<p>A pollution incident response management plan must be in the form required by the regulations and must include the following—</p> <p>(a) the procedures to be followed by the holder of the relevant environment protection licence, or the occupier of the relevant premises, in notifying a pollution incident to—</p> <p>(i) the owners or occupiers of premises in the vicinity of the premises to which the environment protection licence or the direction under section 153B relates, and</p> <p>(ii) the local authority for the area in which the premises to which the environment protection licence or the direction under section 153B relates are located and any area affected, or potentially affected, by the pollution, and</p> <p>(iii) any persons or authorities required to be notified by Part 5.7,</p> <p>(b) a detailed description of the action to be taken, immediately after a pollution incident, by the holder of the relevant environment protection licence, or the occupier of the relevant premises, to reduce or control any pollution,</p> <p>(c) the procedures to be followed for co-ordinating, with the authorities or persons that have been notified, any action taken in combating the pollution caused by the incident and, in particular, the persons through whom all communications are to be made,</p> <p>(d) any other matter required by the regulations.</p>	<p>Section 7</p> <p>Section 8</p> <p>Section 8</p> <p>Section 13 to 18</p> <p>Section 13 to 20</p> <p>Section 20</p>



**Building
something
great**

Section/Clause	Requirement	Location in PIRMP
153D	A person who is required to prepare a pollution incident response management plan under this Part must ensure that it is kept at the premises to which the relevant environment protection licence relates, or where the relevant activity takes place, and is made available in accordance with the regulations.	Section 1
153E	A person who is required to prepare a pollution incident response management plan under this Part must ensure that it is tested in accordance with the regulations	Section 10
153F	If a pollution incident occurs in the course of an activity so that material harm to the environment (within the meaning of section 147) is caused or threatened, the person carrying on the activity must immediately implement any pollution incident response management plan in relation to the activity required by this Part	Section 7 and 8
Part 3A POEO(G) Regulation 2009 Pollution Incident Response Management Plans note: See also 153C (a)-(c) of the POEO Act 1997		
98C(1) (a)	A description of the hazards to human health or the environment associated with the activity to which the licence relates,	Section 5, Section 12
98C(1) (b)	The likelihood of any such hazards occurring, including details of any conditions or events that could, or would, increase that likelihood,	Section 12
98C(1) (c)	Details of the pre-emptive action to be taken to minimise or prevent any risk of harm to human health or the environment arising out of the relevant activity	Section 12
98C(1) (d)	An inventory of potential pollutants on the premises or used in carrying out the relevant activity	Section 5
98C(1) (f)	A description of the safety equipment or other devices that are used to minimise the risks to human health or the environment and to contain or control a pollution incident,	Section 5, Section 12-18
98C(1) (g)	the names, positions and 24-hour contact details of those key individuals who: are responsible for activating the plan, and are authorised to notify relevant authorities under section 148 of the Act, and are responsible for managing the response to a pollution incident,	Section 6,7,20
98C(1) (h)	the contact details of each relevant authority referred to in section 148 of the Act,	Section 8,20
98C(1) (i)	Details of the mechanisms for providing early warnings and regular updates to the owners and occupiers of premises in the vicinity of the premises to which the licence relates or where the scheduled activity is carried on	Section 8.2, Section 12-20
98C(1) (j)	The arrangements for minimising the risk of harm to any persons who are on the premises or who are present where the scheduled activity is being carried on	Section 12-20



**Building
something
great**

Section/Clause	Requirement	Location in PIRMP
98C(1) (k)	A detailed map (or set of maps) showing the location of the premises to which the licence relates, the surrounding area that is likely to be affected by a pollution incident, the location of potential pollutants on the premises and the location of any stormwater drains on the premises	Section 12-20
98C(1) (l)	A detailed description of how any identified risk of harm to human health will be reduced, including (as a minimum) by means of early warnings, updates and the action to be taken during or immediately after a pollution incident to reduce that risk,	Section 12-20
98C(1) (m)	The nature and objectives of any staff training program in relation to the plan	Section 9
98C(1) (n)	The dates on which the plan has been tested and the name of the person who carried out the test,	Section 10
98C(1) (o)	The dates on which the plan is updated,	Document Control
98C(1) (p)	The manner in which the plan is to be tested and maintained.	Section 10,11

3. Definition of a ‘Pollution Incident’

The definition of a pollution incident is:

“pollution incident means an incident or set of circumstances during or as a consequence of which there is or is likely to be a leak, spill or other escape or deposit of a substance, as a result of which pollution has occurred, is occurring or is likely to occur. It includes an incident or set of circumstances in which a substance has been placed or disposed of on premises, but it does not include an incident or set of circumstances involving only the emission of any noise.”

A pollution incident is required to be notified if there is a risk of ‘material harm to the environment’, which is defined in section 147 of the POEO Act as:

a) harm to the environment is material if:

- i) it involves actual or potential harm to the health or safety of human beings or to ecosystems that is **not trivial**, or
- ii) it results in actual or potential loss or property damage of an amount, or amounts in aggregate, exceeding \$10,000 (or such other amount as is prescribed by the regulations), and

b) loss includes the reasonable costs and expenses that would be incurred in taking all reasonable and practicable measures to prevent, mitigate or make good harm to the environment.

BCW is now required to report **non-trivial** pollution incidents immediately to the EPA, NSW Health, Fire and Rescue NSW, Safework NSW and the local council.

4. Site Location and Layout

As shown in Figure 1, the site is situated within the Wingecarribee LGA and is zoned Heavy Industrial (IN3). The land to the immediate east and south is zoned General Industrial (IN1)

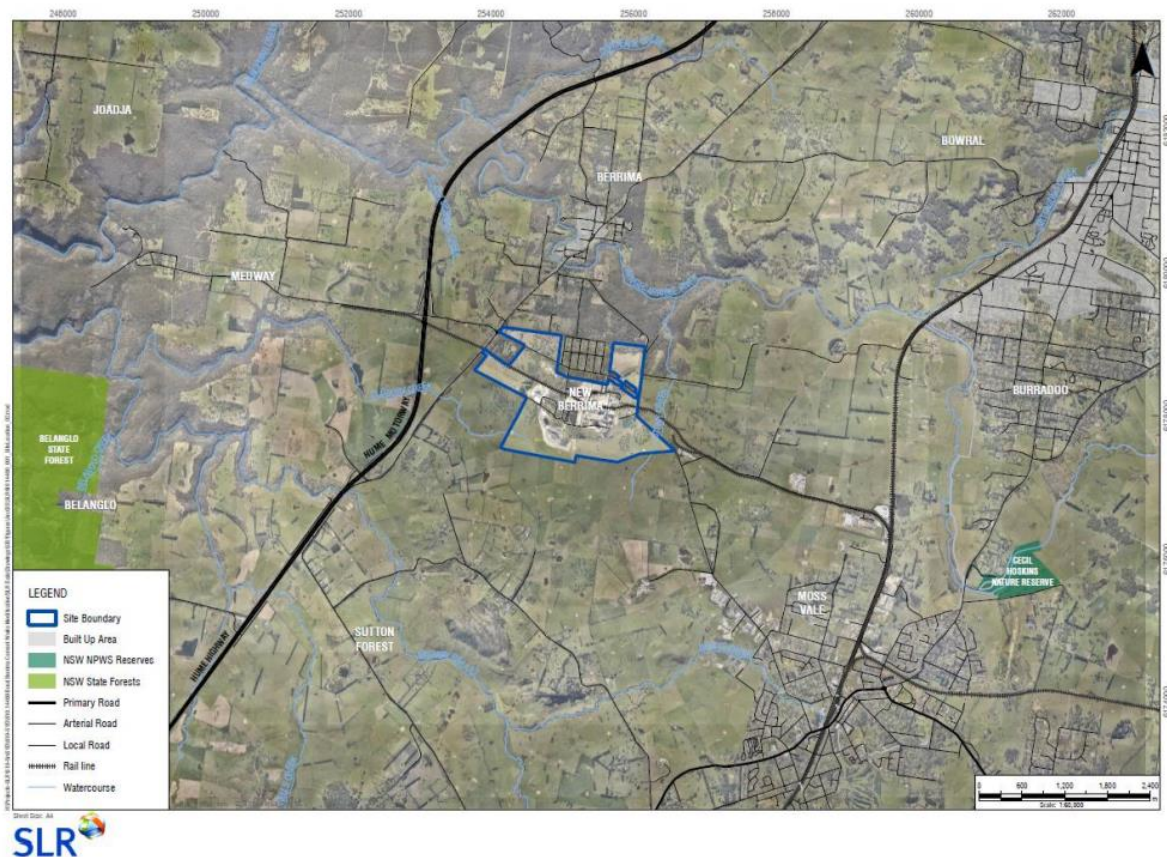


Figure 1 Site Location

The overall site layout of BCW is shown in Figure 2. Please note that Part B of this PIRMP contains detailed maps which describe the important details for each pollution incident scenario.





**Building
something
great**

5. Potential Polluting Substances

Table 2 below is an inventory of potential pollutants kept on the premises.

Figure 3 shows the map reference for the location of the storage. This inventory provides a description of the main hazards to human health or the environment, an assessment of the likelihood of the hazards occurring and also includes the current controls and safety equipment and/or pre-emptive actions in place to minimise or prevent risk of harm to human health or the environment.

Table 3 details the typical volumes and location of hazardous material storage. Please note that these volumes are indicative in nature. The Hazardous and Dangerous Goods Register is located in the CCR outside the small conference room and will contain the most up to date information. Safety Data Sheets are stored via ChemAlert which is accessed via the Boral intranet under Applications.

Table 2 List of Polluting Substances: Initial Assessment

LIST OF POLLUTING SUBSTANCE STORAGES/USES AT SITE: INITIAL ASSESSMENT (all Chemicals listed in this sheet are to be subjected to a risk assessment)							
Site Name: Berrima Cement					Responsible Person: Operations Manger		Date: 28/04/2023
Name / description	Covered under Hazardous Chemicals/SDS?	Amount stored	Location of storage	Map reference. See Figure 3	Likelihood of impact on neighbours	Current controls	See Risk Ass & PIRMP Response Action (see Below)
CHEMICALS/FUELS/LUBRICANTS (raw materials and products which can cause pollution)							
Diesel	Class 3	Variable: typical volumes listed in Table 3	Diesel Storage Area	Ref A	LOW Only if substances enter waterways and is transported off-site	Bunding PMP Training Spill Kits SOP Inductions Fire Fighting Equipment Security	Incident #1
LPG	Flammable Gas Class 2	Variable: typical volumes listed in Table 3	Depot 2	Ref B	LOW Only if flammable gas is spread off-site during high winds Early warning required¹	Bunding PMP Training Spill Kits SOP Inductions Fire Fighting Equipment Security	Incident #5
Grinding aid	Class 3	10 000ltrs	Cement Mil 6 Cement Mill 7	Ref C	LOW Only if substances enter waterways and is transported off-site	Bunding PMP Training Spill Kits SOP Inductions Fire Fighting Equipment Security	Incident #1
Oils/Solvents	Class 3	Packaged goods up to 600ltrs	Oil Store /Loco Shed	Ref D	LOW Only if substances enter waterways and is transported off-site	Bunding PMP Training Flammable Cabinet Spill Kits Inductions Fire Fighting Equipment	Incident #1



**Building
something
great**

LIST OF POLLUTING SUBSTANCE STORAGES/USES AT SITE: INITIAL ASSESSMENT (all Chemicals listed in this sheet are to be subjected to a risk assessment)							
Site Name: Berrima Cement					Responsible Person: Operations Manger		Date: 28/04/2023
Name / description	Covered under Hazardous Chemicals/SDS?	Amount stored	Location of storage	Map reference. See Figure 3	Likelihood of impact on neighbours	Current controls	See Risk Ass & PIRMP Response Action (see Below)
						Security	
Lubricants, Gases	Class 2	Variable: typical volumes listed in Table 3	Maintenance Workshop	Ref B	LOW Only if substances enter waterways and is transported off-site	Fire Extinguishers Concrete Floor Enclosed Shed Containment Cages and Cabinets	Incident #1 and Incident #5
Oils/Fuel	Class 3	Variable: typical volumes listed in Table 3	Plant and Equipment (Workshop area)	Ref B	LOW Only if substances enter waterways and is transported off-site	PMP Training Spill Kits SOP Inductions Fire Fighting Equipment Security	Incident #1
Acids		2000ltrs	Powerhouse Ponds Hotwells		LOW Only if substances enter waterways and is transported off-site		Incident #1
Laboratory Chemicals		Variable <500Ltrs	Laboratory	Ref E	LOW Only if substances enter waterways and is transported off-site	Fire Extinguishers Concrete Floor Enclosed Shed Containment Cages and Cabinets Security	Incident #1 Risk Assessment Response Actions
Radioactive Material Cs-137 Cf-252	Class 7		No. 6 Cement Mill SC109 SC110 SC111 CO62	Ref H	LOW Only if substances escapes during maintenance or transport	Regular wipe tests and inspections by licenced contractor Regular maintenance with licenced contractor Transport via licenced contractor Storage off site via licenced radiation store Signage and restriction of access within close vicinity Training Security	Incident #6 Risk Assessment Response Actions
MATERIALS (eg stockpiles, silos, bulk solids etc)							
Product Stockpiles	N/A	Up to 50,000T	Dedicated on site	Ref F	LOW Only if excessive sediment enters waterways and is transported off-site	Water sprays Water Cart Maintain manageable levels Security	Incident #2 Risk Assessment Response Actions



**Building
something
great**

LIST OF POLLUTING SUBSTANCE STORAGES/USES AT SITE: INITIAL ASSESSMENT (all Chemicals listed in this sheet are to be subjected to a risk assessment)							
Site Name: Berrima Cement					Responsible Person: Operations Manger		Date: 28/04/2023
Name / description	Covered under Hazardous Chemicals/SDS?	Amount stored	Location of storage	Map reference. See Figure 3	Likelihood of impact on neighbours	Current controls	See Risk Ass & PIRMP Response Action (see Below)
					during significant rain events		
AQUEOUS (eg dams, wastewater tanks, other water storage area)							
Water Storage Dam (Sediment)	N/A	15ML Lake Breed 19ML Lake Quality	Lake Breed Lake Quality	Ref G	LOW Only if excessive sediment enters waterways and is transported off-site during significant rain events	Continue to use for dust suppression Ensure pumps are maintained through scheduled maintenance Routine site cleaning Utilization of settling ponds and weirs Discharge monitoring	Incident #3 Risk Assessment Response Actions
Storm Water Drains	N/A	Variable	Site	Ref G	LOW Only if excessive sediment enters waterways and is transported off-site during significant rain events	Straw Bales Rubber and Earthen Berms Audits and Inspections	Incident #3 Risk Assessment Response Actions
SUBSTANCES IN PROCESSES (substances which could be emitted from operational process i.e. treatment plants, vehicles etc)							
Mobile Plant (onsite) BORAL	Class 3	Up to 15 on site	Dedicated on site	Operational traffic areas	N/A	Spill Kits Pre start checks PMP Training	Incident #1 Risk Assessment Response Actions
Car Parking up to 100 vehicles	Class 3	Variable	Car Park	Onsite car park	N/A	Spill Kits Training	Incident #1 Risk Assessment Response Actions
Traffic Areas (dust, chem. leaks & loss)	Class 3	N/A	Dedicated on site	Operational traffic areas	N/A	Training Routine site cleaning Water cart Spill Kits	Incident #1 and Incident #2 Risk Assessment Response Actions
Excessive fume / smoke from the combustion of flammable products onsite causing	N/A	Flammable materials –tyre and wood chip	Site process	site	N/A	Regular scheduled maintenanceEmergency response training	Incident # 7 Risk Assessment



**Building
something
great**

LIST OF POLLUTING SUBSTANCE STORAGES/USES AT SITE: INITIAL ASSESSMENT (all Chemicals listed in this sheet are to be subjected to a risk assessment)							
Site Name: Berrima Cement					Responsible Person: Operations Manger		Date: 28/04/2023
Name / description	Covered under Hazardous Chemicals/SDS?	Amount stored	Location of storage	Map reference. See Figure 3	Likelihood of impact on neighbours	Current controls	See Risk Ass & PIRMP Response Action (see Below)
material harm to the environment or unexpected impact on the community						Detailed Fire fighting equipment and plan in place Annual audits	Response Actions

Figure 3 Map References of Polluting Substance Storage



Table 3 Polluting Substances Locations

Product/ Chemical Name	Maximum Quantity Stored	Location where the Product is Stored/Used	Storage Type	Is the Chemical a Dangerous Good? (Y/N)	Is the Chemical a Hazardous Substance? (Y/N)
Kiln Fuel – Diesel	55000L	Tank No. SS60	Tank	N	Y
Kiln Fuel – Diesel	55000L	Tank No. SS61	Tank	N	Y
Diesel	60000L	AKF1 - SS63	Tank	N	Y
Diesel	22000L	AKF1 - SS64	Tank	N	Y
Diesel Fuel	25000L	Tank No. SS70	Tank	N	Y
Diesel Fuel	25000L	Tank No. SS71	Tank	N	Y
LPG	2500L	Depot 2	Tank	Y	Y
LPG	4500KG	Depot 2	Tank	Y	Y
Acetylene	1000KG	Gas Store	Bottles	Y	Y
Oxygen	2500KG	Gas Store	Bottles	Y	Y
Hydrogen	250KG	Gas Store	Gas bottles	Y	Y
LPG	330KG	Gas Store	Gas bottles	Y	Y
Hydrochloric Acid (30%)	30L	Laboratory	Bottles	Y	Y
Ethanol	100L	Laboratory	Bottles	Y	Y
Methanol	100L	Laboratory	Bottles	Y	Y
Kerosene	10L	Laboratory	Bottles	Y	Y
Acetone	20L	Laboratory	Bottles	Y	Y
Grinding Aid	5000L	Cement Mill 6	Tank	N	Y
Grinding Aid	5000L	Cement Mill 7	Tank	N	Y
Hydrochloric Acid (30%)	1000L	Powerhouse pond	Tank	Y	Y



**Building
something
great**

Product/ Chemical Name	Maximum Quantity Stored	Location where the Product is Stored/Used	Storage Type	Is the Chemical a Dangerous Good? (Y/N)	Is the Chemical a Hazardous Substance? (Y/N)
Hydrochloric Acid (30%)	1000L	Hotwells	Tank	Y	Y
CALTEX DELO 400 SAE 15W/40	410L	Loco Shed	Drum	N	N
CALTEX RANDO HD 68	410L	Loco Shed	Drum	N	N
CALTEX 85W-140 Gear Oil	205L	Loco Shed	Drum	N	N
CALTEX 80W-90 Gear Oil	205L	Loco Shed	Drum	N	Y
Caltex Safe Degrease	205L	Loco Shed	Drum	Y	Y
Waste Oil	1000L	Loco Shed	ISO Container	Y	Y
CALTEX DELO 50/50 Coolant	205L	Loco Shed	Drum	N	Y
Hydrogen	156KG	Preheater L6	Bottles	Y	Y
CALTEX DELO GREASE EP 2	40KG	OIL STORE	Drum	N	N
CALTEX EP GREASE C 3	40KG	OIL STORE	Drum	N	N
CALTEX MINE GREASE PREMIUM 2	180KG	OIL STORE	Drum	N	N
CALTEX RANDO HD 32	205L	OIL STORE	Drum	N	N
CALTEX TEXTRAN TDH PREMIUM	205L	OIL STORE	Drum	N	N
CALTEX MEROPA 320	205L	OIL STORE	Drum	N	N
CALTEX TRANSFORMER OIL BSI INHBITED	205L	OIL STORE	Drum	N	N
CALTEX DELO 400 SAE 15W/40	205L	OIL STORE	Drum	N	N
CALTEX TORQUE FLUID 434	205L	OIL STORE	Drum	N	N
CALTEX MEROPA 460	205L	OIL STORE	Drum	N	N



**Building
something
great**

Product/ Chemical Name	Maximum Quantity Stored	Location where the Product is Stored/Used	Storage Type	Is the Chemical a Dangerous Good? (Y/N)	Is the Chemical a Hazardous Substance? (Y/N)
CALTEX RANDO HD 32	205L	OIL STORE	Drum	N	N
CALTEX RANDO HD 68	205L	OIL STORE	Drum	N	N
CALTEX RANDO HD 150	205L	OIL STORE	Drum	N	N
CALTEX MEROPA 320	205L	OIL STORE	Drum	N	N
CALTEX MEROPA SYNTHETIC EP 320	205L	OIL STORE	Drum	N	N
CALTEX TEXAMATIC 1888	205	OIL STORE	Drum	N	N
CALTEX SAFE-D-GREASE QB	205L	OIL STORE	Drum	N	Y
CALTEX KEROSENE	200L	OIL STORE	Drum	Y	Y
CALTEX HAVOLINE FULLY SYNTHETIC 5W/40	205L	OIL STORE	Drum	N	N
Transformer Oils – Refer to Transformer Register	765 to 7400L	Various	Transformers	Various	Various
SWDF	900 tonnes	SWDF shed	shed	N	N
Tyre Chips	75 tonnes	Tyre storage area	Open bunkers	N	N



**Building
something
great**

6. Staff Roles and Responsibilities

Table 4 Staff Roles and Responsibilities

Position	Responsibility
<i>Employees and Contractors</i>	Following the procedures outlined in the PIRMP and related documents Immediately alerting Supervisor or Team Leader of any environmental incidents or near-misses.
<i>Team Leaders / Front Line Supervisors</i>	Following the procedures outlined in the PIRMP and related documents Immediately alerting Site/Production Manager or, in case of their unavailability, Environmental Representative or Environment Manager of any potentially material environmental incidents or near-misses. Conducting incident investigations.
<i>Site / Operations Manager and/or Site Environmental Business Partner and/or Environment Manager</i>	Authorization of the PIRMP Administration, maintenance and implementation of the PIRMP Assessing whether the incident has caused or threatens “material environmental harm” and, if so, immediately notifying all Appropriate Regulatory Authorities. Ensuring that investigations are undertaken to a level corresponding to the level of risk and impact.

7. Internal Pollution Incident Reporting

Any pollution incident satisfying the **material harm** threshold must be immediately reported to relevant statutory authorities by either the Site/Operations Manager, or Environment Manager.

In cases where material harm level cannot be immediately assessed or insufficient information comes to hand on the severity of the incident, the general advice is to err on the side of caution and notify the Relevant Authorities with a qualification that the situation could not yet be fully assessed.

Until further notice the following procedure needs to be followed:

1. When a pollution incident occurs, a person who has become aware of it must **immediately** bring it to the attention of his/her immediate Supervisor or Manager
2. If necessary, first ring 000 for Emergency Services
3. At least one of the following Boral Cement personnel in Table 5 must be contacted **immediately**:



**Building
something
great**

Table 5 Boral Cement Personnel

Name	Function	Phone Number	Mobile Number
Waqas Ali	Operations Manager		
Gabriel Paicu	Technical Manger		
Branko Vuleta	Production Superintendent / Quarry Manager		
Greg Johnson	Senior Environment Business Partner – NSW/ACT		
Sharon Makin	Environment Business Partner – NSW/ACT		

Whilst personal contact details are available in the controlled version of the Pollution Incident Response Management Plan located onsite they do not appear in the public document

4. Greg Johnson, or in case of his unavailability one of the Senior Management personnel listed above, is to **immediately** notify all appropriate Regulatory Authorities specified in Section 8.1.

5. In borderline situations, where the exceedance of the trigger level of “material harm” of a pollution incident may not be clear, a quick assessment including consultation with Boral environmental personnel should be undertaken to help the decision whether to notify or not.

6. Boral’s Senior Management must be informed promptly of the fact of immediate notification to the Authorities. This includes environmental personnel listed above, as well as the Head of Environment, the National Community Relations & Engagement Manager and Senior Legal Counsel.

8. External Pollution Incident Reporting

As the legislation requires that notification must be done immediately upon becoming aware of the pollution incident, it is unlikely that a detailed picture will be available for reporting. Notwithstanding, it seems that some of the Government Authorities prepared a detailed questionnaire which is being filled at the time of this initial notification. Under the stress of incident handling it could be easy to provide a hasty, inaccurate estimate of the situation when answering these questions.

Therefore, the notification should be restricted to the facts known and nothing should be assumed or guessed. The details will be provided to the asking Authority later when more information comes to hand.

The initial notification should include as much of the following information (if known) as possible:



**Building
something
great**

- Location and time of the pollution incident
- Type of the incident (spill, fire, unlicensed harmful discharge, etc)
- Assessed level of incident gravity: “it seems to be...” (e.g. “a relatively minor spill”; “major fire”, “explosion limited to one building”, etc.)
- Whether the Emergency Services have been required to attend.

Unless known for a fact, the answers to other questions should be politely deferred until a better assessment of the situation can be made.

The Boral person who is responsible for notifying the Authorities (Site/Operations Manager or Senior Environment Business Partner) about the incident must prepare a Notification Log (a suitable form is attached in Part B) with the details of time of notifications and the persons who took to the call. The Authorities are expected to log the calls but early indications are that this is not always the case.

Notification of all Appropriate Government Authorities (at least 5 entities listed in Table 6) may take considerable time. Delays may be experienced connecting to the right person or no contact may be possible after hours. All such instances should be recorded in the Notification Log.

8.1. Pollution Incident Authority Contact List

The 5 entities which must be contacted in the case of emergency is detailed below in Table 6.

Table 6 Pollution Incident Authority Contact List

Government Authority – compulsory notifications	Emergency notification phone number
EPA – Environment Line	131 555
Fire & Rescue NSW (FRNSW)	1300 729 579
Wingecarribee Council	(02) 4868 0888
Public Health Unit (Southern Sydney) – Liverpool GW PHU	HealthLink (24 hr)- 1300 066 055 Head Office- Liverpool- (02) 9794 0855
WorkCover Authority of NSW	131050 Company ABN asked: 62 008 528 523
Government Authority – ring if relevant	Emergency notification phone number
Police & Ambulance	000
Roads and Maritime Services (road spills)	132 701
WNSW Incident Line	1800 061 069



**Building
something
great**

Bush Fire Control Officer	02 4677 7000
Poisons Information Centre	131 126
Endeavour Energy (power line emergencies)	131 003
Australian Radiation Protection and Nuclear Safety Agency	1800 022 333

8.2. Community Notification Contact List

Communication with the local community may also be undertaken depending on the circumstances of the pollution incident. Berrima Cement would consider the following options for providing Early Warning and ongoing information to the community on pollution incidents:

- Direct phone contact with any local residents directly impacted by the pollution incident
- Letter Box drops of incident information and site contacts to local residents impacted by the pollution incident
- The inclusion of incident details within the relevant Community Newsletter and Community Meetings

The National Community Relations & Engagement Manager may be used to assist in the process of communicating with the community. Relevant community members in the immediate vicinity of the site are detailed below in Table 7.



Name	Address	Postal Address	Preferred Contact	Email
New Berrima Residents				
Others				

Note: when alerting , please remember that he has a list of 4000 names of SHCAG members. He is eager to help notifying on our behalf, just make sure he notifies only people in the areas under threat from the pollution incident. This will have to be discussed in detail.

Register last updated 16/10/2012

24



**Building
something
great**

9. Incident Response Training

Berrima Cement will implement the Pollution Incident Response Management Plan by training or providing information to relevant employees and contractors in relevant areas of the Plan. The nature and objectives of staff training is to relate to site personnel the importance of early notification of any incidents and spills to site supervisors and key personnel.

Training or information will be provided on the following:

- The contents and intent of this PIRMP,
- The roles and responsibilities of site staff in relation to this PIRMP
- Spill response procedures;
- General environmental awareness; and / or
- Hazardous materials awareness.

Site inductions for visitors and sub-contractors also advise individuals to report any environmental incidents or spills to site supervisors and key personnel immediately. Key site personnel and supervisors participate in PIRMP Drills which are used as practical training and can also be used to identify any potential gaps or areas for improvement for the PIRMP. A summary of the PIRMP Drills undertaken is shown below in Table 8.

Table 8 Summary of PIRMP Drills

Test Date	Version of PIRMP tested	Incident Drilled
15/11/2024	12	Incident #7 Infrastructure fire
28/04/2023	10	Incident 4 ESP Trip
08/04/2022	10	Loss of Radioactive Material
28/04/2021	9	New Incident: Gas Escape
07/04/2020	8	Incident 4: Escape of hydrocarbon into Lake Quality
06/05/2018	7	Incident 4: Escape of hydrocarbon into Lake Quality
26/04/2018	6	Incident 2: Loss of fuel due to refueling from diesel tank
30/03/2017	5	Incident 7: Mobile Plant, hydraulic hose or tank failure

Please note that V10 of the PIRMP consolidated the incident list. Incident numbers may be reflective of old versions of the PIRMP.

A sign-off sheet is kept of the personnel present for the undertaking of a PIRMP Drill and a record is kept on when and how the PIRMP is communicated to employees. This information forms a section of the PIRMP Drill document.



**Building
something
great**

10. PIRMP Testing

Plans must be tested routinely at least once every 12 months. The testing is to be carried out in such a manner as to ensure that the information included in the plan is accurate and up to date, and that each plan is capable of being implemented in a workable and effective manner.

Routine testing of the PIRMP will be conducted annually, and can be completed through the following methods:

- Simulated environmental emergency drills/exercises, or
- Desktop simulations.

11. PIRMP Review

Revisions are to be coordinated by the Site Manager and Environmental Representative. The objectives of a review are:

- To maintain compliance with the statutory requirements,
- To identify opportunities for improvement in the Plan, and reduce the risk to human health and the environment, and
- To identify any changes in personnel or regulatory contact information.

11.1.Event Based

Events which may trigger a review of this Plan or its associated documents include:

- Within 1 month of reporting to the nominated parties in accordance with the plan, after a pollution incident, or
- Modification/Improvement to the system

11.2.Time Based

Berrima Cement will review this management plan routinely every 12 months. The Plan review will include:

- This Document, and
- Legislation, Approval and Licence changes.
- Any internal personnel changes

12. Risk Assessment of Potential Incidents

A risk assessment of each potential incident has been undertaken and is detailed in Table 9.

Table 9 Risk Assessment and Corrective Control Measures of Incidents

Hazard and Likelihood Risk Assessment and Corrective Control Measures									
Site: Berrima Cement Works						Responsible Person: Operations Manager		Review Date: 28 April 2023	
Name / ref of pollutant / chemicals	Description of Hazard / Incident leading to hazard	C	L	R	Impact on Neighbours ¹	Factors which could increase risk	Residual Risk after implementation of controls. (See Table 1 for list of current controls).	Responsible person	Action date
Diesel / Hydrocarbon Spill	Incident #1 Uncontrolled loss of Diesel or other hydrocarbon products that could result in material harm to the environment or human health	2	2	L4	N	Dry, windy conditions (increase fire danger) or heavy rain/flood conditions (will increase potential for spill to spread to catchment drainage areas)	Consequence: (Minor 2): Failure resulting in loss of all or substantial volume of tanks would be captured entirely by existing primary bund with no release to soil or water. Likelihood: (Unlikely 2): Diesel Tanks are self bunded double walled fuel tanks. Due to location of tank, damage to tanks is unlikely to occur from external equipment. In addition tanks are maintained in good structural integrity with low risk of failure through corrosion. Drain valve, hoses and refuelling equipment are maintained in good structural integrity with low risk of failure The drain valve is locked at all times. Risk Assessment = Minor 2 Vs Unlikely 2 = L4	As per PIRMP action plan	When required
Airborne dust	Incident #2 Excessive airborne dust from stockpiled material, mobile plant or traffic areas causing material harm to the environment or significant impact to community	2	2	L4	Y (Neighbours notified will be dependent on wind direction)	Dry, windy conditions (increase wind erosion and dust transport). Summer months with long periods of extended dry conditions.	Consequence: (Minor 2): Excessive dust from stockpile during high winds causing nuisance to surrounding area. Likelihood: (Unlikely 2): Stockpiles are maintained to a manageable level on a monthly basis. Use of water sprinklers and water cart onsite during windy periods. Extensive land reserves act as buffer land from surrounding communities. Surrounding land is rural with sparse distribution of neighbours. Risk Assessment = Minor 2 Vs Unlikely 2 = L4	As per PIRMP action plan	When required
Sediment laden stormwater	Incident #3 Uncontrolled release of sediment laden water from storage dams causing material harm to the environment	2	2	L4	Y (Neighbours to be notified will be downstream of Lake Quality and Stony Creek)	Extended periods of rain increase the risk. Late Summer/early Autumn is typically the wettest part of the year on site.	Consequence: (Minor 2): Failure of one or more sediment dams are likely to result in off-site impacts to water courses which would predominantly reduce water quality over a short period of time. As such, impact to the environment/human health is not considered to be significant. Likelihood: (Unlikely 2): Dams are frequently monitored and inspected for levels and integrity. Risk Assessment = Minor 2 Vs Unlikely 2 = L4 Note: For PIRMP purposes overflow events during extreme wet weather will be reported under POEO Licence obligations and not Immediate Reporting.	As per PIRMP action plan	When required
Electrostatic Precipitator Abnormal Operation	Incident #4 Electrostatic Precipitator Trip	2	2	L4	N	Dry, windy conditions increase transport potential. Wind from south is in direction of nearby residents). Summer months with long periods of extended dry conditions will	Consequence: (Minor 2): Localised impact regulatory consequence managed with 24hr limits	As per PIRMP action plan	When required

¹ If the incident may impact on neighbours trigger the early warnings assessment and actions

Hazard and Likelihood Risk Assessment and Corrective Control Measures									
Site: Berrima Cement Works						Responsible Person: Operations Manager		Review Date: 28 April 2023	
Name / ref of pollutant / chemicals	Description of Hazard / Incident leading to hazard	C	L	R	Impact on Neighbours ¹	Factors which could increase risk	Residual Risk after implementation of controls. (See Table 1 for list of current controls).	Responsible person	Action date
						increase ignition risk of flammable gases and consequence.	Likelihood: (Unlikely 2): Electrostatic Precipitator Trip is unlikely due to regular maintenance and calibration, on most occasion the system resets with no issue Risk Assessment = Minor 2 Vs Unlikely 2 =L4		
Gas Escape	Incident #5	4	2	H8	Y (Neighbours notified will be dependent on wind direction)	Dry, windy conditions increase transport potential. Wind from south is in direction of nearby residents). Summer months with long periods of extended dry conditions will increase ignition risk and consequence.	Consequence: (Major 4) Potential for explosion and residential areas of New Berrima to be evacuated. Likelihood: (Unlikely 2): Maintenance and inspections make it very unlikely that a gas leak will occur Risk Assessment = Major 4 Vs Unlikely 2 =H8	As per PIRMP action plan	When required
Loss of radioactive material	Incident #6	4	1	M4	Y	Extreme weather events would increase the risk of failure during transport or maintenance.	Consequence: (Major 4) Potential for exposure and impacted areas of New Berrima to be evacuated and isolated. Likelihood: (Rare 1): Maintenance and inspections. Risk Assessment = Major 4 Vs Unlikely 2 =H8		
Excessive Smoke from Fire	Incident #7 Excessive smoke as a result of equipment or alternative fuels fire causing significant and unexpected impact to the community	2	2	L4	Y (Neighbours notified will be dependent on wind direction)	Dry, windy conditions increase transport potential. Wind from south is in direction of nearby residents). Summer months with long periods of extended dry conditions will increase ignition risk and consequence	Consequence: (minor) smoke would be visible and would have a low potential to cause breathing difficulties to community members Likelihood: (unlikely) fire fighting controls are in place in the operations and staff have been trained in fire fighting response. Maintenance schedule in place to ensure process and fire fighting equipment are in good working order. Emergency response training for Boral staff in place including fire response. Fire Services NSW aware and trained in the potential for this fire.	As per PIRMP action plan	When requested



Part B: Incident Response Actions and Notification Logs

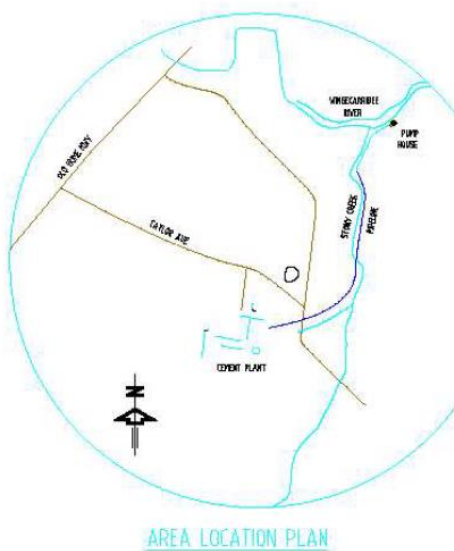


**Building
something
great**

13. Incident 1: Diesel or Hydrocarbon Spill

Table 10 Diesel/hydrocarbon Spill Response Actions

Incident 1	<p>Uncontrolled loss of diesel or other hydrocarbon products that could result in material harm to the environment or human health. See Figure 4, 5 and 6</p> <p>Actions Required:</p> <ul style="list-style-type: none"> • Contact all relevant people/department (refer to Immediate Reporting Contact Sheet in Table 16) • Ensure bund/liner are capturing full volume of diesel • Ensure bund integrity is sound throughout the entire period of incident (i.e. periodic inspections) • Contact service provider (Cleanaway 13 13 39) to pump-out bund contents. • Area to be restricted to Incident Response Personnel • Ensure spill kit available for any release from bund/liner • If any release from bund/liner onto unsealed soil/surface water - Environmental Consultants to be engaged to investigate and remediate contamination. • Repair/replace tanks • Inspect bund for ongoing serviceability
Alarm raising	Any personnel involved or witnessing incident to report to immediate supervisor and PIRMP actions to be implemented.
Emergency Controller	<ul style="list-style-type: none"> • Emergency Controller: Operations Manager or delegate • Call service provider: Operations Manager or delegate • Spill Kit manager: Onsite supervisor or delegate • Periodic inspections and update reporting of site and bund: Onsite supervisor or delegate
Scale of incident	Incident would be restricted to the bunded diesel storage area with minimal external impact, however, potential for bund/liner overflow or failure may result in soil and surface water contamination that will require specialist investigation/remediation.
Evacuate	Only if fire or explosion potential exists. Operations Manager to begin evacuation if advice provided by Fire Department to do so as part of immediate notification.
Communications	<p>Internal:</p> <ul style="list-style-type: none"> • Operations Manager or delegate to use contact sheet for all internal (Boral) contacts. See Table 16 for the list of internal details <p>External mandatory:</p> <ul style="list-style-type: none"> • Immediate Reporting Contact Sheet to be See Table 16 for the list of authorities to be contact and fill in the immediate notification log in Table 15 <p>External non-mandatory:</p> <ul style="list-style-type: none"> • Consider contact neighbours only if diesel has escaped into storm-water drainage lines and will enter Stony Creek and affect residents shown in Figure 6. See Table 17 for the community notification list and contact relevant people. <p>Further guidance on communication can be found in Part A Section 7 and 8</p>
Rescuer / respondent + safety checks	As per Site Emergency Plan CEM-BER-OHS-01 or Fire Department as part of Immediate Reporting
Rescue + First Aid	As per Site Emergency Plan CEM-BER-OHS-01 or Fire Department as part of Immediate Reporting
Clean up and Waste disposal	Service Provider to dispose of diesel and advise on required clean-up. Environmental consultants to be engaged to investigate and remediate contamination.
Reporting and re-preparedness	<p>See HSEQ MS:</p> <ul style="list-style-type: none"> • Incident Reporting, Investigation and Action Management Standard (GRP-HSEQ 3-02)



SPILL KITS OIL ONLY

- No. 6 CRAL MILL
- No. 7 RAW MILL
- AKFI - PUMP-OUT POINT
- CMT - LUBE ROOM
- 7 CMT COMPRESSOR ROOM
- 7 CMT IN MILL ROOM
- 7 CMT IN MILL ROOM
- SPARE OIL SPILL KIT

UNIVERSAL SPILL KITS

- No. 6 RAW MILL
- CMT MILL - DISCHARGE ROOM
- LOCO SHED WEST AWNING
- LOCO SHED WEST AWNING
- TRUCK WASH AREA
- COAL DUMPING
- MINERAL ADDITIONS
- SHALE PAD
- QUARRY
- DRY TIP

LEGEND

- VERY OLD DUMPS, NOW GRASSSED OR USED FOR NORMAL PURPOSES
- CURRENT DUMPS
- COVERED STOCKPILE
- OPEN STOCKPILE
- PLANT BOUNDARY
- WIND SPEED RECORDER
- MAJOR OIL TANKS/STORES
- DRAINS
- DRAINS (PROCESS WATER)



Figure 4 Locations of Fuel Storage and Spill Kits



**Building
something
great**

Note that diesel fueling facilities are located at the designated storage areas and tanks within the site. Mobile Plant tank failure would depend on the location of the break down to the site. All mobile plant are fitted with fire extinguishers.

The water drainage is shown below in Figure 5 and Figure 6 can assist in determining whether or not the spill has entered site drainage and has the potential to be transported off-site.

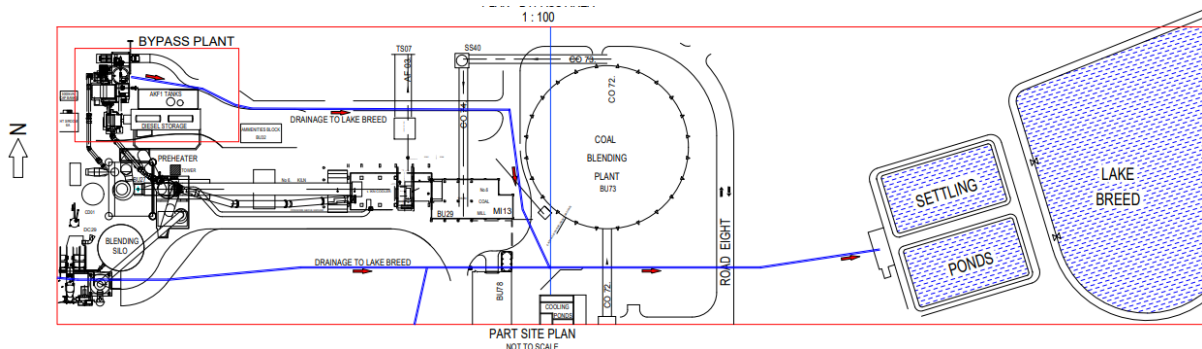


Figure 5 Location of Site Drainage



Figure 6 Potentially Affected Residents Incident 1

14. Incident 2: Excessive Airborne Dust

Table 11 Excessive Airborne Dust Response Actions

Incident 2	<p>Excessive airborne dust from stockpiled material, mobile plant or traffic areas causing material harm to the environment or significant impact to community. See Figure 7 and 8.</p> <p>Actions Required:</p> <ul style="list-style-type: none"> • Employees, Contractor/Visitor to notify site representative of issue immediately. • Dust suppression activity to commence immediately on stockpiles via water cart or other means. • Any operations associated with disturbing the stockpiles, such as driving and dumping on, to be minimised or ceased. • Daily monitoring to be undertaken to assess weather and site conditions. Utilise real time dust monitoring and weather station monitoring as required • Contact all relevant people/department (refer to Immediate Reporting Contact Sheet in Table 16)
Alarm raising	Any personnel involved or witnessing incident to report to immediate supervisor and PIRMP actions to be implemented.
Emergency Controller	<ul style="list-style-type: none"> • Emergency Controller: Operations Manager or delegate • Call service provider: Operations Manager or delegate • Periodic inspections and update reporting of site and stockpiles: Onsite supervisor or delegate
Scale of incident	Incident would be localised to the area surrounding stockpile area, with minimal external offsite impact.
Evacuate	Only if fire or explosion potential exists. Quarry Manager and any advice provided by Fire Department as part of attendance after immediate notification.
Communications	<p>Internal:</p> <ul style="list-style-type: none"> • Operations Manager or delegate to use contact sheet for all internal (Boral) contacts. See Table 16 for the list of internal details <p>External mandatory:</p> <ul style="list-style-type: none"> • Immediate Reporting Contact Sheet to be See Table 16 for the list of authorities to be contact and fill in the immediate notification log in Table 15 <p>External non-mandatory:</p> <ul style="list-style-type: none"> • Consider contact neighbours only if dust significantly impacting residences. Potentially impacted residents would be dependent on wind conditions in Figure 8. See Table 17 for the community notification list and contact relevant people. <p>Further guidance on communication can be found in Part A Section 7 and 8</p>
Rescuer / respondent + safety checks	As per Site Emergency Plan or Fire Department as part of Immediate Reporting
Rescue + First Aid	As per Site Emergency Plan or Fire Department as part of Immediate Reporting
Clean up and Waste disposal	All water carts to be placed on areas producing airborne dust. If necessary work must be ceased to control airborne dust. No disposal of waste required.
Reporting and re-preparedness	<p>See HSEQ MS:</p> <p>Incident Reporting, Investigation and Action Management Standard (GRP-HSEQ 3-02)</p>

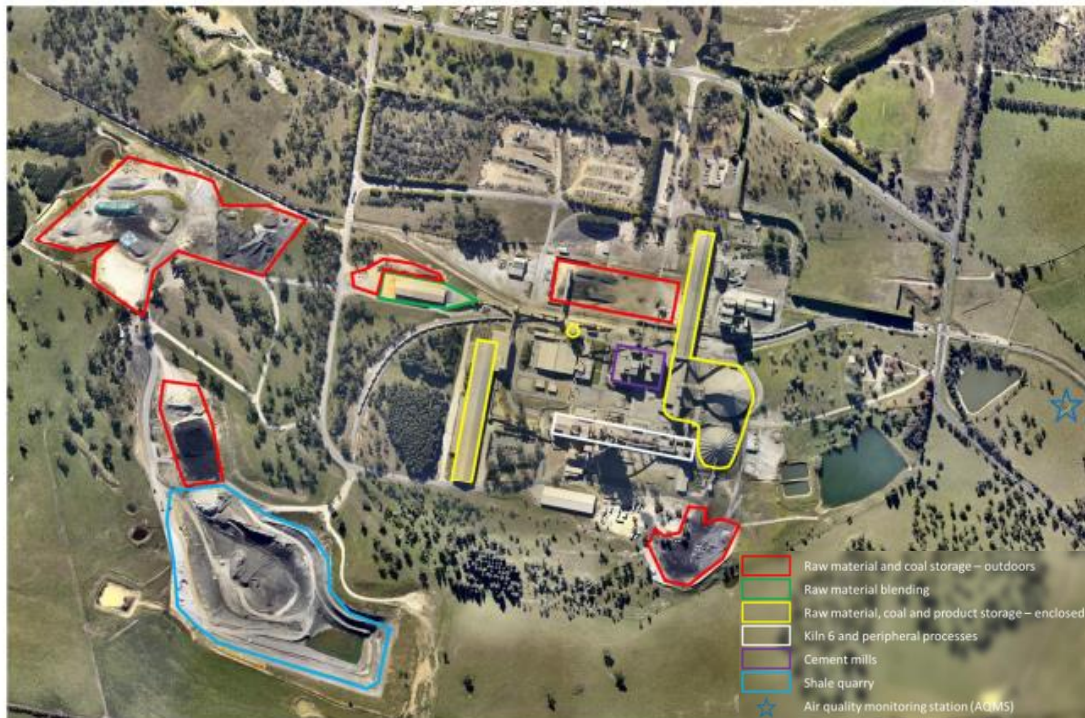


Figure 7 Potential Sources of Dust

Please note that pollution controls include operational response which is not included on these maps. See Part A Section 12 for more detail on pollution controls for Incident 2



Figure 8 Potentially Affected Residents Incident 2

15. Incident 3: Dam Failure

Incident 3	<p>Uncontrolled release of sediment laden water from storage dams failure causing material harm to the environment. See Figure 9 and 10</p> <p>Actions Required:</p> <ul style="list-style-type: none"> • Contact all relevant people/department (refer to Immediate Reporting Contact Sheet) • Ensure bund integrity is sound throughout the entire period of incident (i.e. periodic inspections) • Contact local neighbours if going to be inundated by rise of water • Area to be restricted to Incident Response Personnel • If any release from site onto unsealed soil/surface water - Environmental Consultants to be engaged to investigate and remediate contamination, if any • Contact local contractor to rebuild dams immediately
Alarm raising	Any personnel involved or witnessing incident to report to immediate supervisor and PIRMP actions to be implemented.
Emergency Controller	<ul style="list-style-type: none"> • Emergency Controller: Operations Manager or delegate • Call service provider: Operations Manager or delegate • Spill Kit manager: Onsite supervisor or delegate • Periodic inspections and update reporting of site and bund: Onsite supervisor or delegate
Scale of incident	Catastrophic failure of one or more sediment dams are likely to result in off-site impacts to water courses which would predominantly reduce water quality over a short period of time. As such, impact to the environment/human health is not considered to be significant.
Evacuate	Only if flood potential exists. Quarry Manager and any advice provided by Fire Department as part of attendance after immediate notification.
Communications	<p>Internal:</p> <ul style="list-style-type: none"> • Operations Manager or delegate to use contact sheet for all internal (Boral) contacts. See Table 16 for the list of internal details <p>External mandatory:</p> <ul style="list-style-type: none"> • Immediate Reporting Contact Sheet to be See Table 16 for the list of authorities to be contact and fill in the immediate notification log in Table 15 <p>External non-mandatory:</p> <ul style="list-style-type: none"> • Consider contact neighbours only residents will be inundated with sediment laden water at locations shown in Figure 10. See Table 17 for the community notification list and contact relevant people. <p>Further guidance on communication can be found in Part A Section 7 and 8</p>
Rescuer / respondent + safety checks	As per Site Emergency Plan or Fire Department as part of Immediate Reporting
Rescue + First Aid	As per Site Emergency Plan or Fire Department as part of Immediate Reporting
Clean up and Waste disposal	Depending on severity of incident, consultants to be contacted to advise on required clean-up.
Reporting and re-preparedness	<p>See HSEQ MS:</p> <ul style="list-style-type: none"> • Incident Reporting, Investigation and Action Management Standard (GRP-HSEQ 3-02)



Figure 9 Location of Storage Dams and Potentially Affected Residents

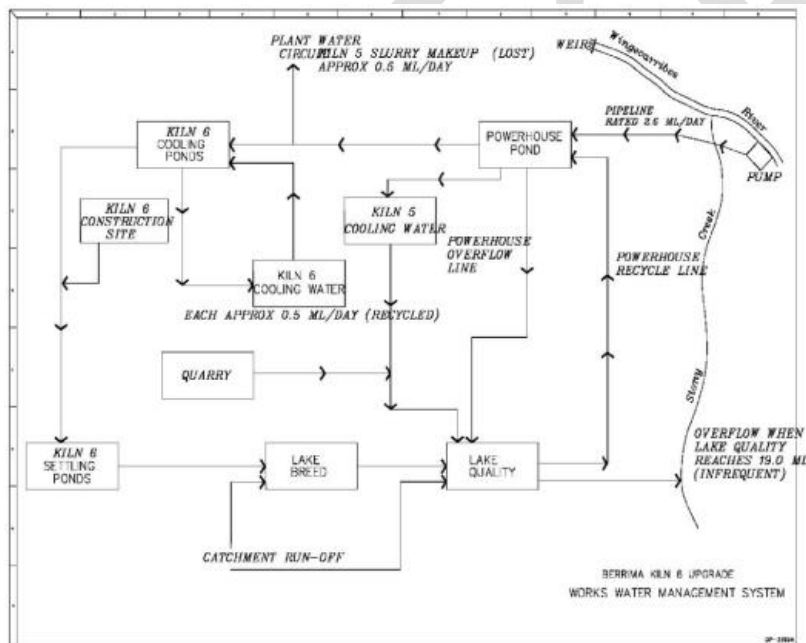


Figure 10 Overview of Site Water Management System

Please note that pollution controls include inspections and operational response which are not showed on these maps. See Section 12 for more details. For PIRMP purposes overflow events during extreme wet weather will be reported under POEO Licence obligations and not immediate reporting.



**Building
something
great**

16. Incident 4: Electrostatic Precipitator abnormal operation

Table 12 Electrostatic Precipitator Trip Response Actions

Incident 4	<p>Electrostatic Precipitator abnormal operation. See Figure 11 and 12</p> <p>Actions Required:</p> <ul style="list-style-type: none"> Control Room to notify Technical Manager/Production Manager Monitor real time information to assess if 24 limit will be exceeded Consider shut down based on information if reset occurs Contact all relevant people/department (refer to Immediate Reporting Contact Sheet) Contact maintenance team for assessment If any release from stacks will affect near neighbors site PIRMP is to be followed Call service provider to inspect real time monitor & equipment for serviceability if required
Alarm raising	Site Management to contact environment manager to assess the need for regulatory notification, and PIRMP actions to be implemented.
Emergency Controller	<ul style="list-style-type: none"> Control room Supervisor Notify Technical Manager/Production Manager Notify Site Operations Manager Track 24hr emissions graph and wind direction
Scale of incident	Incident would be likely be localised to the area with no external impact, potential for incident on a large scale with external impact is unlikely but possible.
Evacuate	Only if emissions impact exists. Site Manager and any advice by safety team will determine necessity.
Communications	<p>Internal:</p> <ul style="list-style-type: none"> Operations Manager or delegate to use contact sheet for all internal (Boral) contacts. See Table 16 for the list of internal details <p>External mandatory:</p> <ul style="list-style-type: none"> Immediate Reporting Contact Sheet to be See Table 16 for the list of authorities to be contact and fill in the immediate notification log in Table 15 <p>External non-mandatory:</p> <ul style="list-style-type: none"> Consider contact neighbours if emissions significantly impacting residences. Potentially impacted residents would be dependent on wind conditions. See Table 17 for the community notification list and contact relevant people. <p>Further guidance on communication can be found in Part A Section 7 and 8</p>
Rescuer / respondent + safety checks	As per Site Emergency Plan and PIRMP
Rescue + First Aid	As per Site Emergency Plan or Fire Department as PIRMP Reporting
Clean up and Waste disposal	N/A.

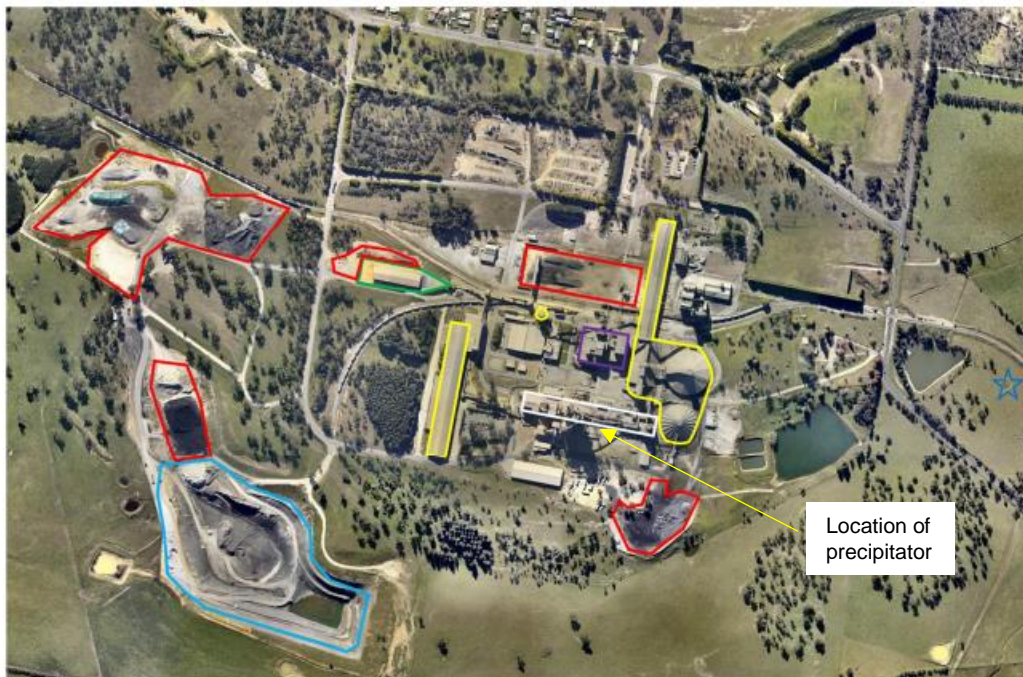


Figure 11 Location of the Precipitator



Figure 12 Potentially Affected Residents Incident 4



**Building
something
great**

17. Incident 5: Gas Leak

Table 13 Gas Leak Response Actions

Incident 5	<p>Failure leading to escape of flammable gas. See Figure 13 and 14</p> <p>Actions Required:</p> <ul style="list-style-type: none"> Control Room to notify Operations Manager Move people in immediate danger to safety If safe to do so, assist and care for injured personnel and call for first aid assistance Shut down or switch off equipment as required. LEAVE LIGHTS ON. Restrict the area Contact all relevant people/department (refer to Immediate Reporting Contact Sheet) Contact maintenance team for assessment Monitor real time information to assess if 24 extent of leak If any release from stacks will affect near neighbors site enact early warning procedures Monitor real time information to assess if 24 extent of leak Call service provider to inspect real time monitor & equipment for serviceability if required
Alarm raising	Any personnel involved or witnessing incident to report to immediate supervisor and PIRMP actions to be implemented.
Emergency Controller	<p>Emergency Controller: Operations Manager or delegate</p> <p>Call service provider: Operations Manager or delegate</p> <p>Periodic inspections and update on maintenance: Onsite supervisor or delegate</p>
Scale of incident	Catastrophic failure of gas storage are likely to result in off-site impacts to air quality and an increased fire risk. It is likely that early warning notifications would need to be provided to residents if evacuation is required. The fire department will advise on scale.
Evacuate	If advice provided by Fire Department as part of attendance after immediate notification.
Communications	<p>Internal:</p> <ul style="list-style-type: none"> Operations Manager or delegate to use contact sheet for all internal (Boral) contacts. See Table 16 for the list of internal details <p>External mandatory:</p> <ul style="list-style-type: none"> Immediate Reporting Contact Sheet to be See Table 16 for the list of authorities to be contact and fill in the immediate notification log in Table 15 <p>External non-mandatory:</p> <ul style="list-style-type: none"> Consider contact neighbours if emissions significantly impacting residences. Potentially impacted residents would be dependent on wind conditions. See Table 17 for the community notification list and contact relevant people. <p>Further guidance on communication can be found in Part A Section 7 and 8</p>
Rescuer / respondent + safety checks	As per Site Emergency Plan or Fire Department as part of Immediate Reporting
Rescue + First Aid	As per Site Emergency Plan or Fire Department as part of Immediate Reporting
Clean up and Waste disposal	Depending on severity of incident, consultants to be contacted to advise on required clean-up.
Reporting and re-preparedness	<p>See HSEQ MS:</p> <p>Incident Reporting, Investigation and Action Management Standard (GRP-HSEQ 3-02)</p>



Figure 13 Location of Gas Escape Incident



Figure 14 Potentially Affected Residents Incident 5



**Building
something
great**

18. Incident 6: Loss of Radioactive Material

Table 14 Loss of Radioactive Material Response Actions

Incident 6	<p>Loss of radioactive material from equipment. See Figure 13 and 14</p> <p>Actions Required:</p> <ul style="list-style-type: none"> • Immediately contact Operations Manager and Accredited Service Provider (Troy Jones (02) 42 68 6192 or 0409 669 491) • Immediately remove all persons from the vicinity of the incident • Area will be restricted to incident response personnel. Cordon off a perimeter of at least ten metres and monitor the radiation dose rates along all accessible sides of the perimeter. Extensions to the perimeter may be required if the dose rates levels exceed 10 $\mu\text{Sv/hr}$ • If a plant fire occurs, the Radiation Safety Officer will ensure that the attending fire brigade is aware of the location of the radiation gauges • Radiation Specialist will notify operations manager if source is lost or damaged, or if any employee has received a dose > 1mSv. • Contact all relevant people/department (refer to Immediate Reporting Contact Sheet) • Consult with radiation specialist for further remediation measures • If the incident has within transit, transport of the gauge should be made directly to the manufacturer's premises or other approved 'Isotope Handling Facility', so that the necessary repairs can be undertaken if so required.
Alarm raising	Any personnel involved or witnessing incident to report to immediate supervisor and PIRMP actions to be implemented.
Emergency Controller	<p>Emergency Controller: Operations Manager or delegate</p> <p>Call service provider: Operations Manager or delegate</p> <p>Periodic inspections and update on maintenance: Onsite supervisor or delegate</p>
Scale of incident	Catastrophic failure of gas storage are likely to result in off-site impacts to air quality and an increased fire risk. It is likely that early warning notifications would need to be provided to residents if evacuation is required. The fire department will advise on scale.
Evacuate	If advice provided by Service Provider or Fire Department as part of attendance after immediate notification.
Communications	<p>Internal:</p> <ul style="list-style-type: none"> • Operations Manager or delegate to use contact sheet for all internal (Boral) contacts. See Table 16 for the list of internal details <p>External mandatory:</p> <ul style="list-style-type: none"> • Immediate Reporting Contact Sheet to be See Table 16 for the list of authorities to be contact and fill in the immediate notification log in Table 15 <p>External non-mandatory:</p> <ul style="list-style-type: none"> • Consider contact neighbours if advised by service provider that an ignition risk or risk to human health exists if emissions significantly impacting residences. Potentially impacted residents would be dependent on wind conditions. See Table 17 for the community notification list and contact relevant people. <p>Further guidance on communication can be found in Part A Section 7 and 8.</p>
Rescuer / respondent + safety checks	As per Site Emergency Plan or Fire Department as part of Immediate Reporting
Rescue + First Aid	As per Site Emergency Plan or Fire Department as part of Immediate Reporting
Clean up and Waste disposal	Depending on severity of incident, consultants to be contacted to advise on required clean-up.



**Building
something
great**

Reporting and re-preparedness

See HSEQ MS:

Incident Reporting, Investigation and Action Management Standard (GRP-HSEQ 3-02)

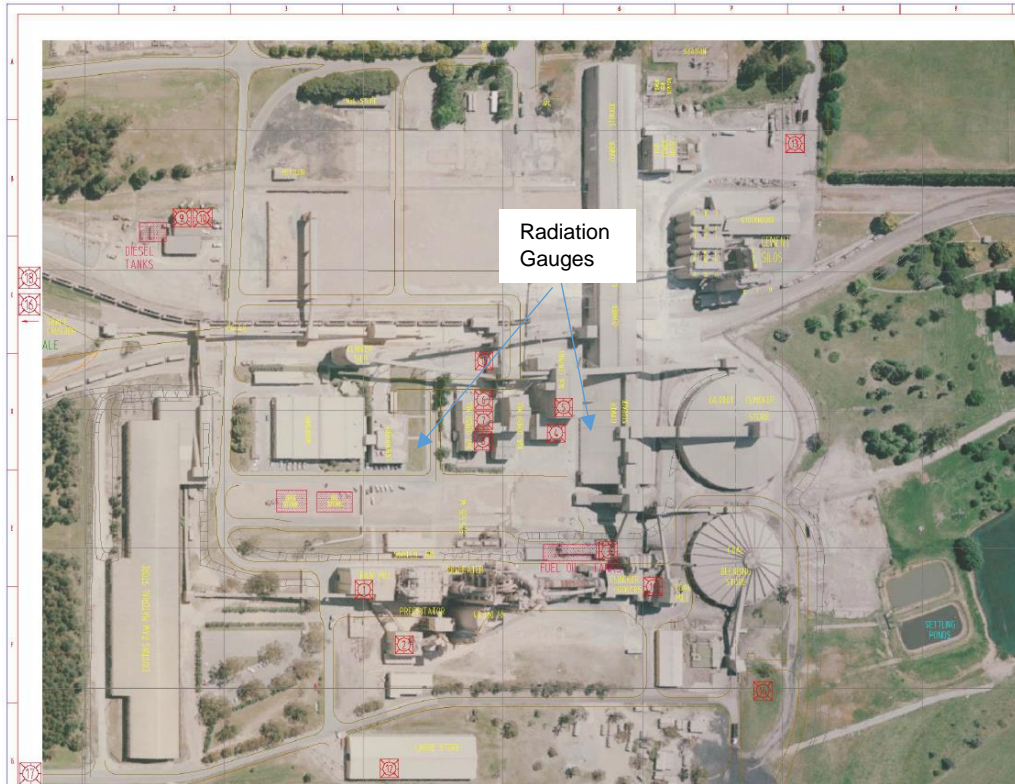


Figure 15 Location of Fixed Radiation Gauges



Figure 16 Potentially Affected Residents Incident 6



**Building
something
great**

19. Incident 7: Excessive Smoke from Fire

Table 5 Fire and Smoke Response Actions

Incident 7	<p>Excessive smoke as a result of equipment or alternative fuel fire See Figure 15 and 16</p> <p>Actions Required:</p> <ul style="list-style-type: none"> • Activate the nearest emergency alarm. Advise the Area Warden immediately of the fire or smoke and its location on the site. • Area Warden is to move any people in immediate danger to the Safe Assembly Area, and advise the Chief Warden immediately of the fire or smoke and its location on site. • The Chief Warden will assess the situation and, if deemed appropriate, evacuate the site and notify emergency services.
Alarm raising	Any personnel involved or witnessing incident to report to immediate supervisor and PIRMP actions to be implemented.
Emergency Controller	<p>Emergency Controller: Operations Manager or delegate</p> <p>Call service provider: Operations Manager or delegate</p> <p>Periodic inspections and update on maintenance: Onsite supervisor or delegate</p>
Scale of incident	<p>Catastrophic fire of equipment or alternative fuel storage is likely to result in off-site impacts to air quality through smoke particles. Smoke will also be visible.</p> <p>It is likely that early warning notifications would need to be provided to residents if evacuation is required. The fire department will advise on scale.</p>
Evacuate	<p>Internal evacuation of the immediate area or full site will be advised by the Chief Warden and / or the Fire services.</p> <p>No external evacuation required unless potential for expansion of the fire, or if wind has the potential to carry smoke to neighboring residences.</p>
Communications	<p>Internal:</p> <ul style="list-style-type: none"> • Operations Manager or delegate to use contact sheet for all internal (Boral) contacts. See Table 16 for the list of internal details <p>External mandatory:</p> <ul style="list-style-type: none"> • Immediate Reporting Contact Sheet to be followed See Table 16 for the list of authorities to be contact and fill in the immediate notification log in Table 15 <p>External non-mandatory:</p> <ul style="list-style-type: none"> • Consider contacting neighbours if advised by service provider that an risk to human health exists if emissions significantly impacting residences. Potentially impacted residents would be dependent on wind conditions. See Table 17 for the community notification list and contact relevant people. <p>Further guidance on communication can be found in Part A Section 7 and 8.</p>
Rescuer / respondent + safety checks	As per Site Emergency Plan or Fire Department as part of Immediate Reporting
Rescue + First Aid	As per Site Emergency Plan or Fire Department as part of Immediate Reporting
Clean up and Waste disposal	Depending on severity of incident, consultants to be contacted to advise on required clean-up.
Reporting and re-preparedness	See HSEQ MS:

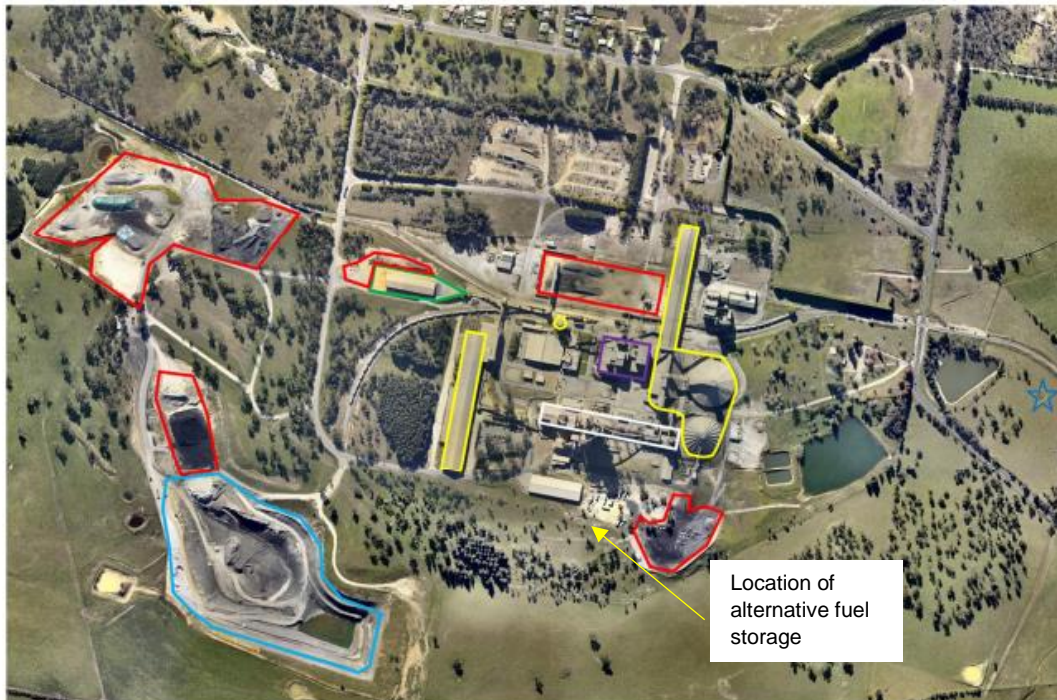


Figure 17 Location of alternative fuel storage



Figure 18 Potentially Affected Residents Incident 6



**Building
something
great**

20. Pollution Incident Notification Log

Person undertaking notification (Name/Function):		
Date and time when first become aware of the incident:		
Incident type:		
Comments:		

Table 15 Initial Immediate Notification Log

Appropriate Regulatory Authority	Time of call	Respondent's name/function	Approximate call duration	Comments
EPA				
Public Health Unit				
Fire and Rescue NSW				
Local Council				
Safework NSW				
Other: (including neighbours)				



**Building
something
great**

Appropriate Regulatory Authority	Time of call	Respondent's name/function	Approximate call duration	Comments
Other: (including neighbours)				
Other: (including neighbours)				
Other: (including neighbours)				
Other:				
Summary of initial communication:				
Person undertaking notification (Name/Function):				
Date and time when additional information become available:				
Comments:				



**Building
something
great**

Immediate notification of further pertinent information (if applicable)				
Appropriate Regulatory Authority	Time of call	Respondent's name/function	Approximate call duration	Comments
EPA				
Public Health Unit				
Fire and Rescue NSW				
Local Council				
SafeWork NSW				
Other:				
Other:				
Summary of additional communication				



**Building
something
great**

21. Immediate Notification Sheet

Table 16 Immediate Notification Sheet

INTERNAL NOTIFICATION SHEET			
Name	Function	Phone Number	Mobile Number
Waqas Ali	Operations Manager		
Gabriel Paicu	Technical Manger		
Branko Vulenta	Production Superintendent/ Quarry Manager		
Greg Johnson	Senior Environment Business Partner – NSW/ACT		
Sharon Makin	Environment Business Partner – NSW/ACT		
Government Authority – compulsory notifications		Emergency notification phone number	
EPA – Environment Line		131 555	
Fire & Rescue NSW (FRNSW)		1300 729 579	
Wingecarribee Council		(02) 4868 0888	
Public Health Unit (Southern Sydney) – Liverpool GW PHU		HealthLink (24 hr)- 1300 066 055 Head Office- Liverpool- (02) 9794 0855	
SafeWork NSW		131 050 Company ABN asked: 62 008 528 523	
Government Authority – ring if relevant		Emergency notification phone number	
Police & Ambulance		000	
Roads and Maritime Services (road spills)		132 701	
WNSW Incident Line		1800 061 069	
Bush Fire Control Officer		02 4677 7000	



**Building
something
great**

Poisons Information Centre	131 126
Endeavour Energy (power line emergencies)	131 003
Australian Radiation Protection and Nuclear Safety Agency	1800 022 333

Table 17 Community Notification Contact List

Name	Address	Postal Address	Preferred Contact	Email
New Berrima Residents - contact if relevant				
Others – contact if relevant				



**Building
something
great**

<p>Note: when alerting, please remember that he has a list of 4000 names of SHCAG members. He is eager to help notifying on our behalf, just make sure he notifies only people in the areas under threat from the pollution incident. This will have to be discussed in detail.</p>				
<p>Register last updated 16/10/2012</p>				

Guidance for notifying relevant neighbours is detailed in Part A Section 8.2

PUBLIC